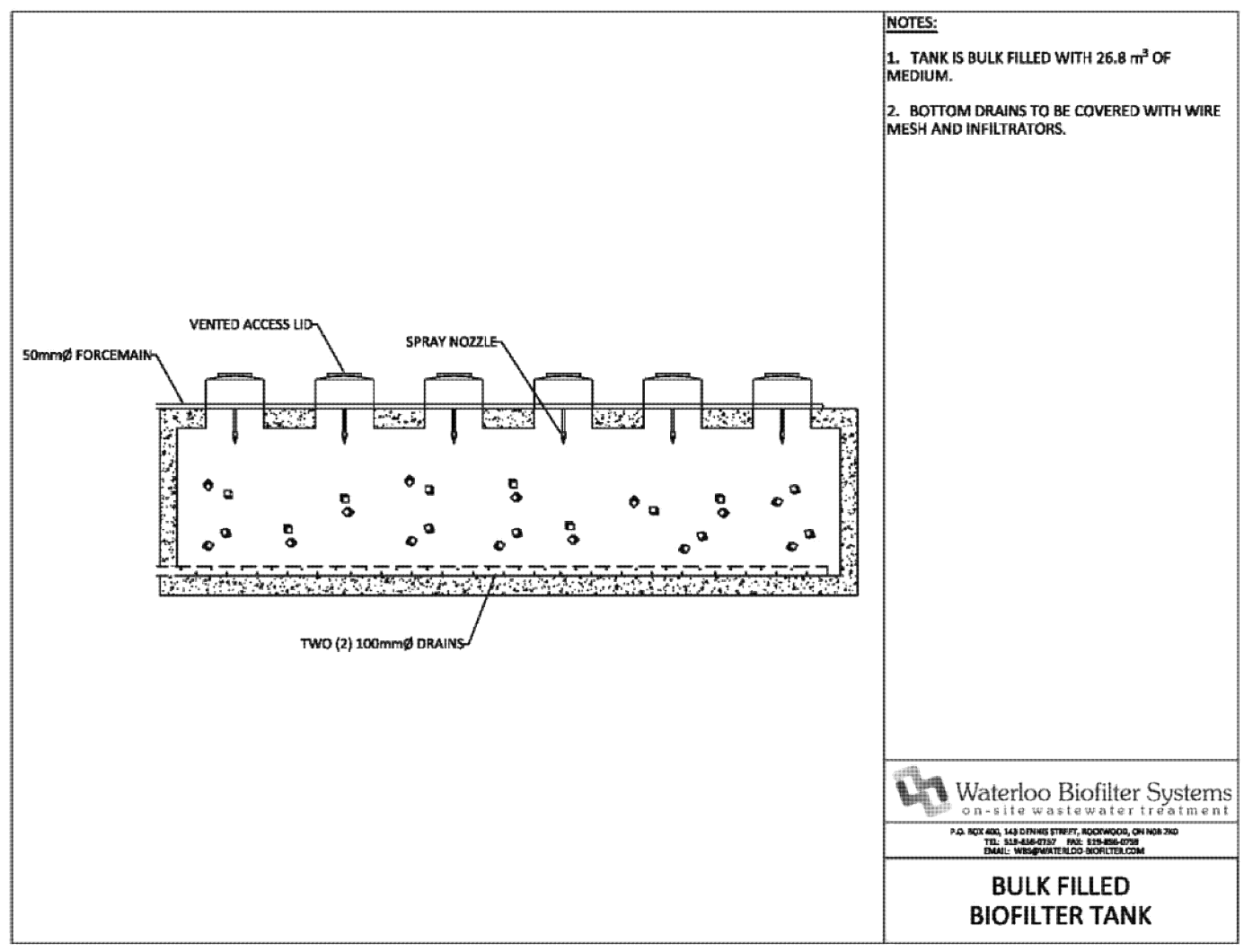
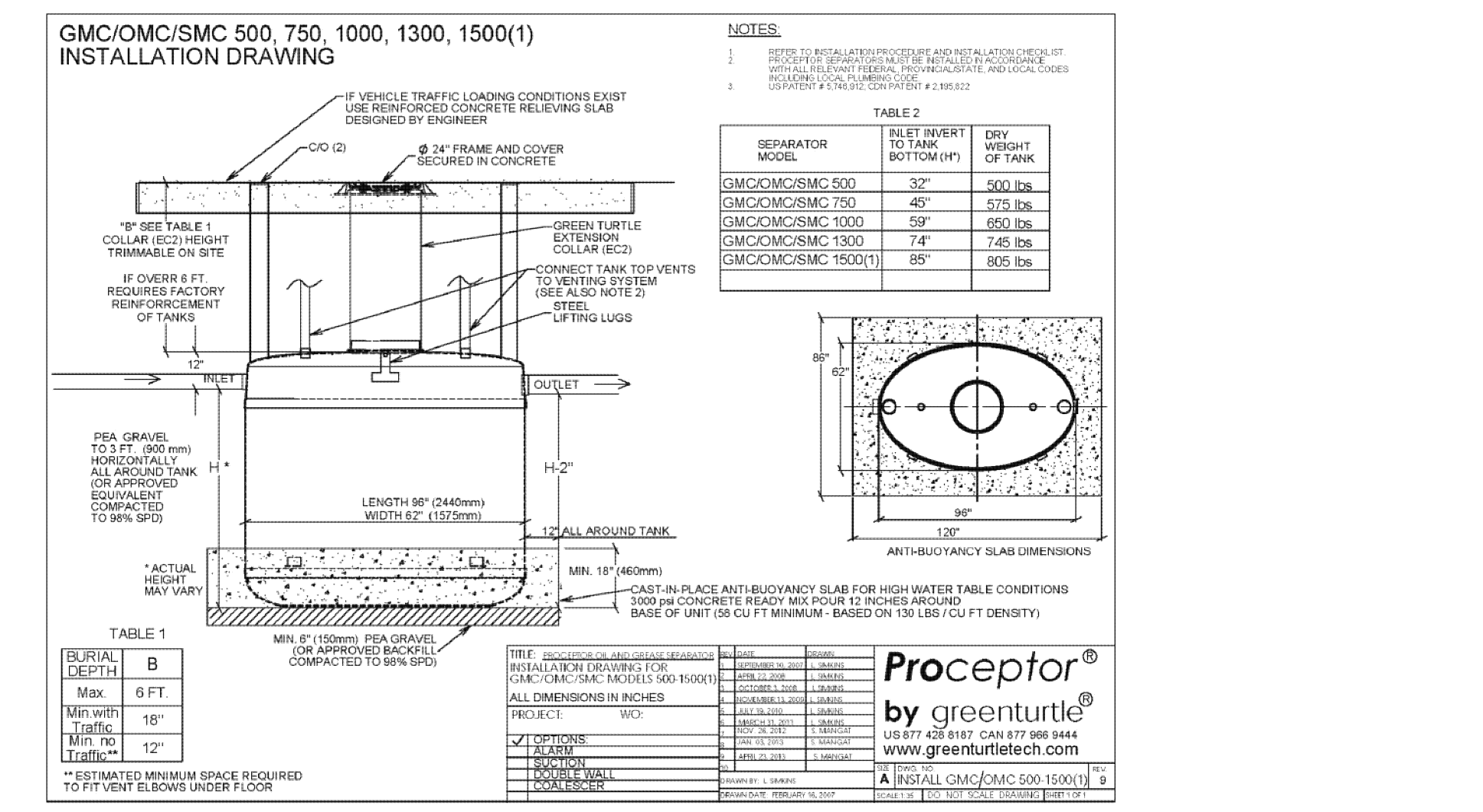
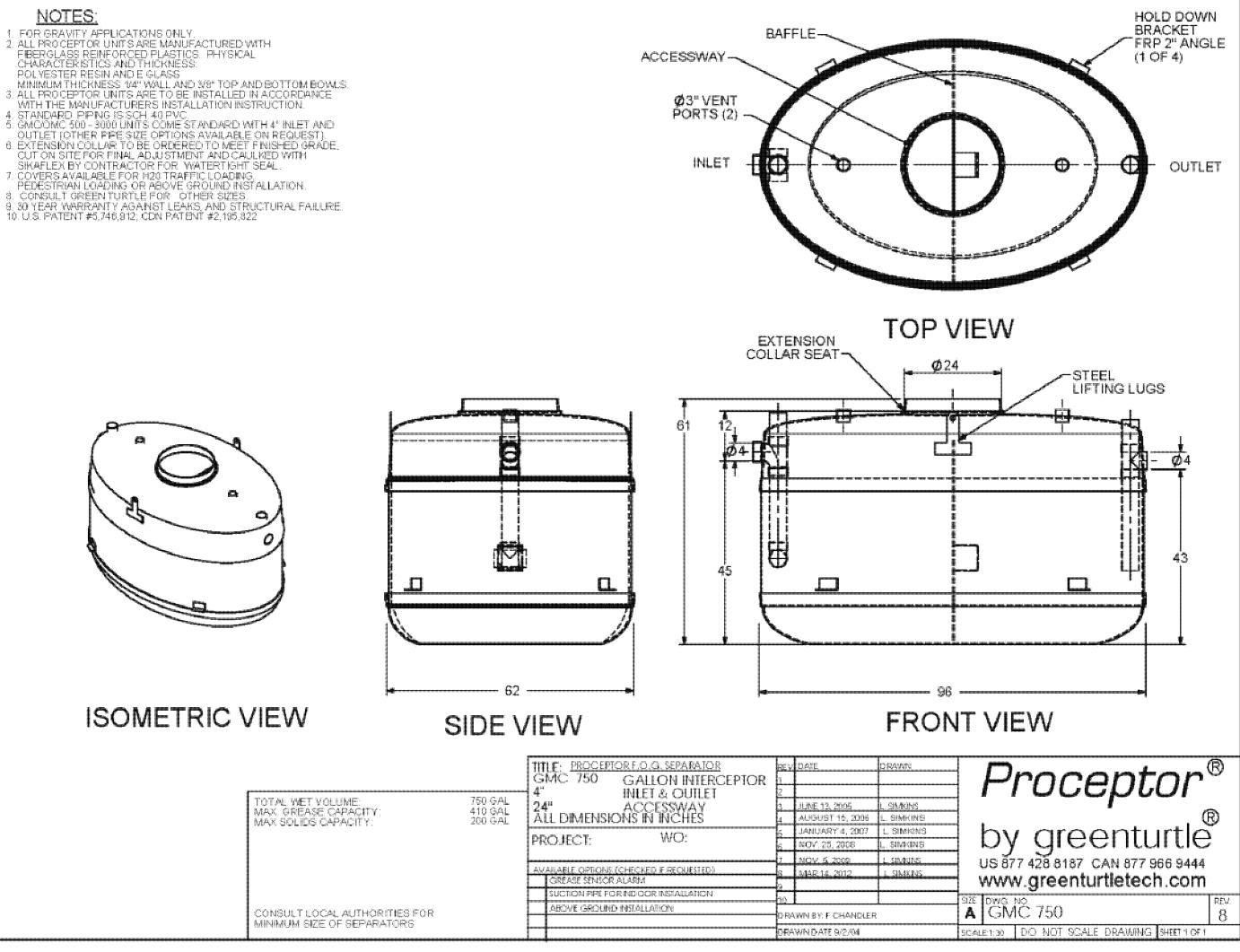
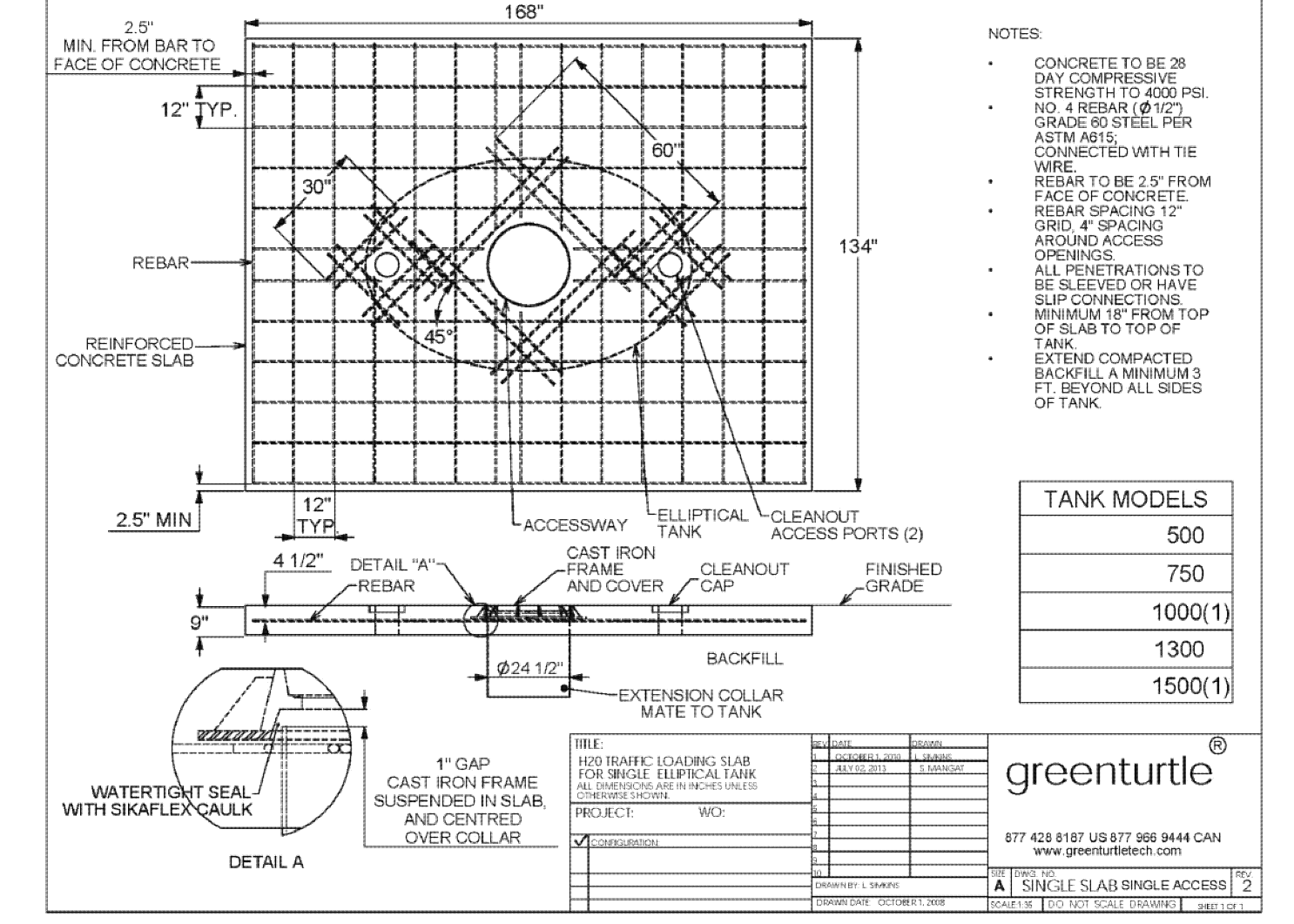
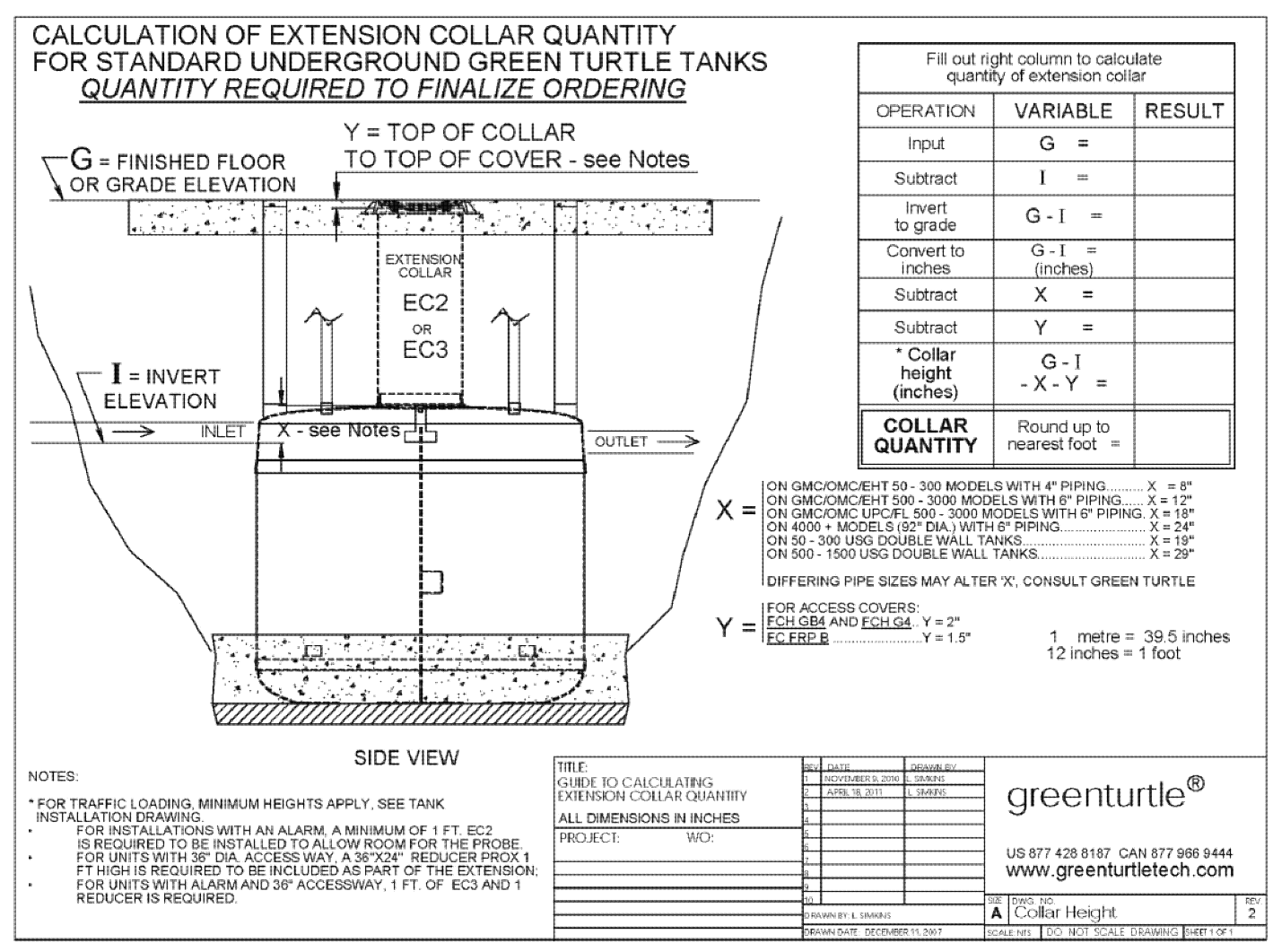
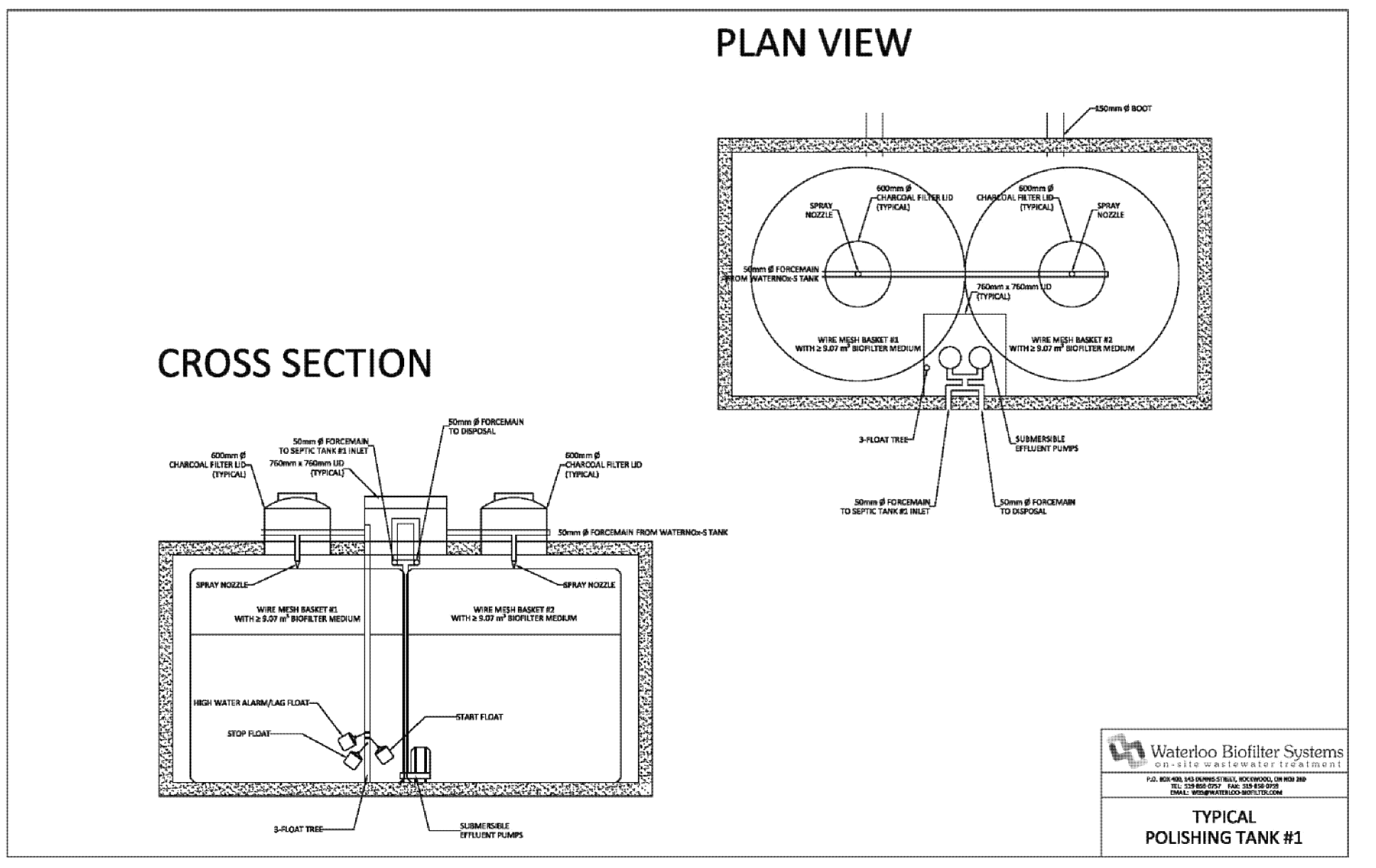
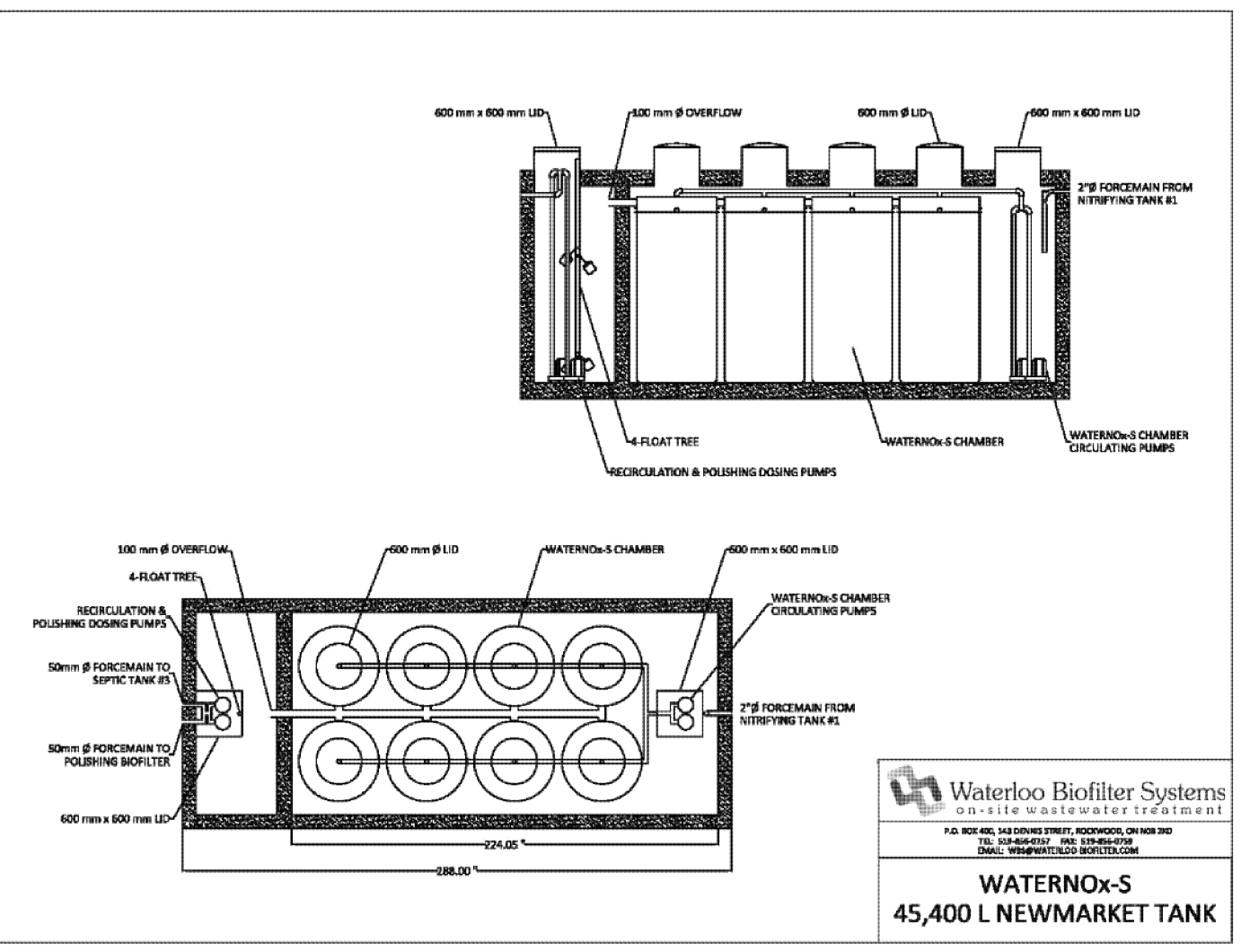
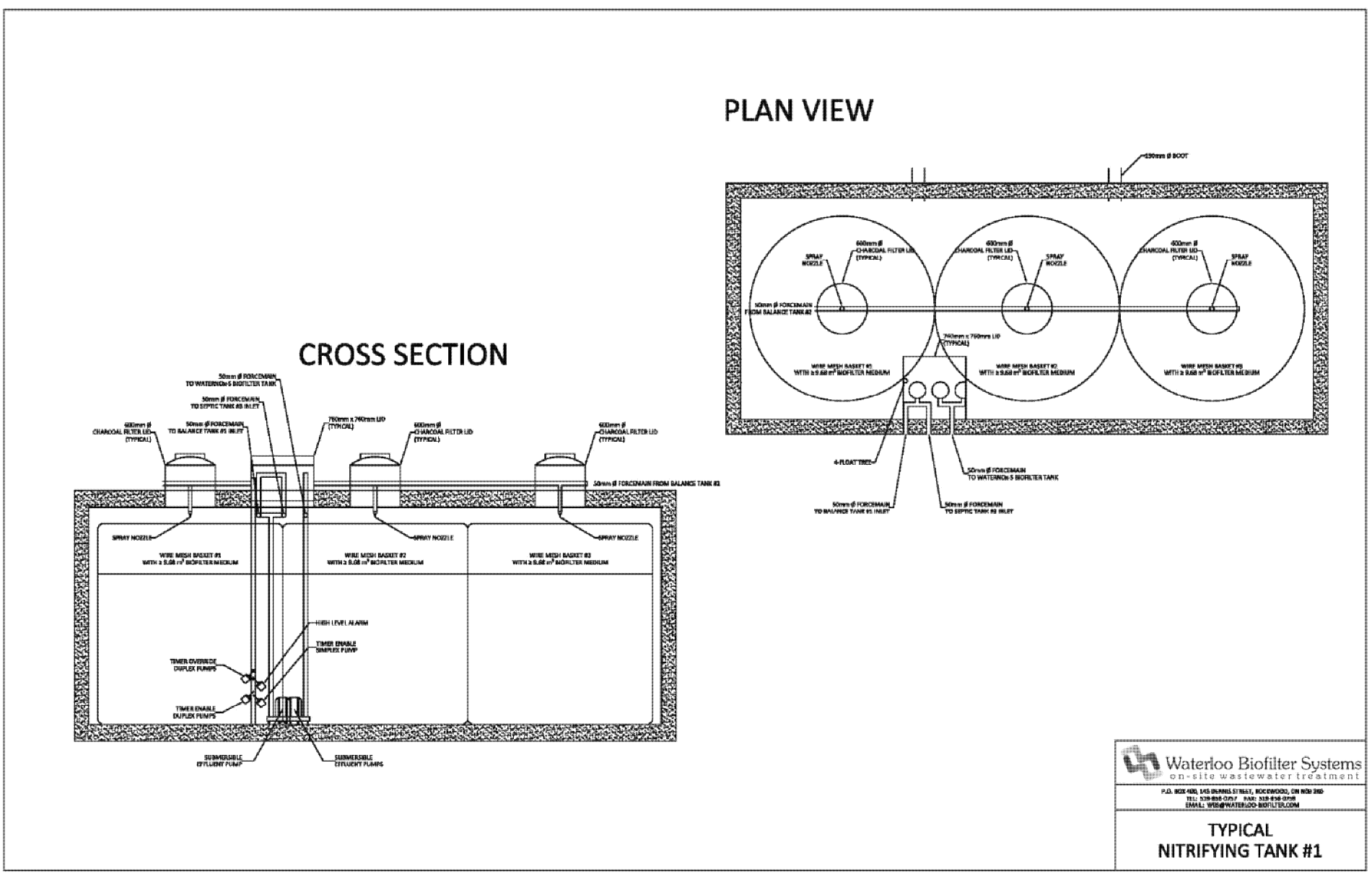


CAUTION
CONTRACTOR TO DETERMINE
LOCATION OF EXISTING UTILITIES
PRIOR TO CONSTRUCTION.



NOTES:
1. TANK IS BULK FILLED WITH 26.8 m³ OF MEDIUM.
2. BOTTOM DRAINING TO BE COVERED WITH WIRE MESH AND INFILTRATORS.

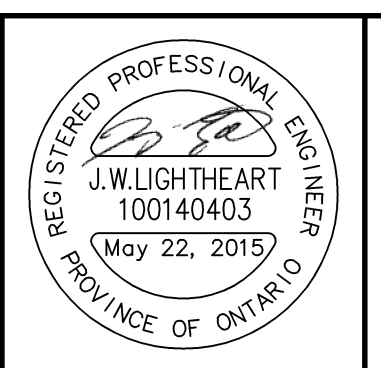


Notes:

- Unless noted otherwise, the measurements and distances shown on this drawing are shown in meters.
- Do not scale drawings.
- It is the contractor's responsibility to verify all dimensions, levels and datums on site and report any discrepancies or omissions to WMI & Associates Ltd. prior to construction.
- This drawing is to be read and understood in conjunction with all other relevant documents applicable to this project.
- This drawing is the exclusive property of WMI & Associates Ltd. and the reproduction of any part of this document without prior written consent is strictly prohibited.

Benchmark: 113.99

#3 CONCRETE MONUMENT (001196530377).
NORTH SIDE OF MITCH OWENS ROAD
APPROXIMATELY 250m WEST OF THE
INTERSECTION OF MITCH OWENS ROAD AND
BANK STREET.



No.	Issue / Revision	Date
1	1st Submission	Feb. 4, 2014
2	2nd Submission	May 22, 2015

Greely Commercial Center

BIOFILTER & AREA BED DETAILS & NOTES 2

Client:
Alium Investments Ltd.
3338 Dufferin Street
Toronto, Ontario
M6A 3A4

WMI & Associates Limited
119 Collier Street
Barrie, Ontario
L4M 1H5
Ph 705-797-2027
www.wmiengineering.ca

Drawn By: TG
Checked By: JWL
Scale: N.T.S.
Project No: 11-183
Drawing No: **BIO 3**