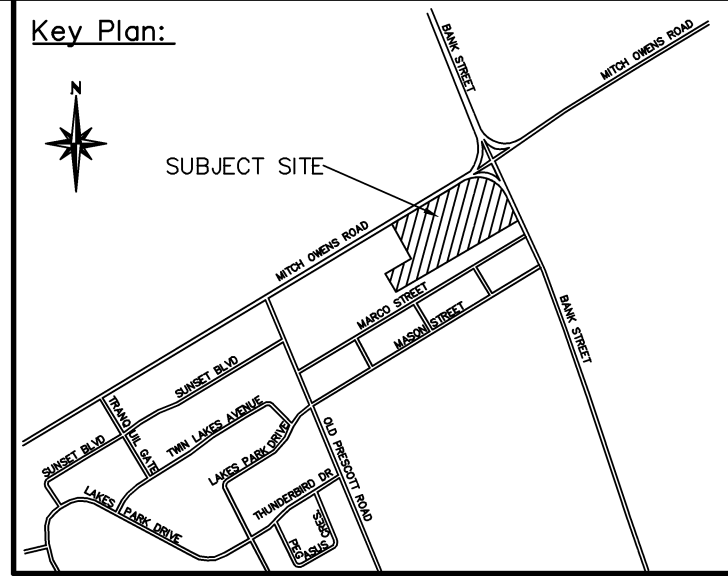


MITCH OWENS ROAD

JOB BENCHMARK
001196530377
#3 Concrete Monument
Elev=113.99

NOTE: ACCESS TO SITE
TO BE DETERMINED IN
CONJUNCTION WITH
FUTURE ROAD WORK
DESIGN BY OTHERS



CAUTION
CONTRACTOR TO DETERMINE
LOCATION OF EXISTING UTILITIES
PRIOR TO CONSTRUCTION.

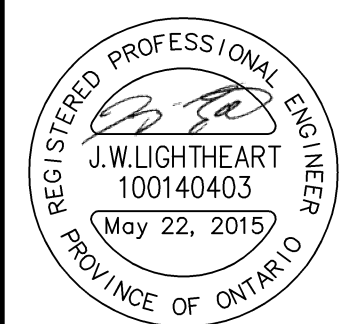
NOTE: LOCATION
OF Pylon SIGN
TO BE DETERMINED

REFER TO BID. I DRAWING FOR BOLLARD & AREA BED GRADING

NOTE: ACCESS TO SITE
TO BE DETERMINED IN
CONJUNCTION WITH
FUTURE ROAD WORK
DESIGN BY OTHERS

- Notes:**
- Unless noted otherwise, the measurements and distances shown on this drawing are shown in meters.
 - Do not scale drawings.
 - It is the contractor's responsibility to verify all dimensions, levels and datums on site and report any discrepancies or omissions to WMI & Associates Ltd. prior to construction.
 - This drawing is to be read and understood in conjunction with all other relevant documents applicable to this project.
 - This drawing is the exclusive property of WMI & Associates Ltd. and the reproduction of any part of this document without prior written consent is strictly prohibited.

Benchmark: 113.99
#3 CONCRETE MONUMENT (001196530377),
NORTH SIDE OF MITCH OWENS ROAD
APPROXIMATELY 250m WEST OF THE
INTERSECTION OF MITCH OWENS ROAD AND
BANK STREET.



No.	Issue / Revision	Date
1	City Pre-Consultation Meeting	July 5, 2013
2	1st Submission	Feb. 4, 2014
3	1st Submission (updated)	May 14, 2014
4	2nd Submission	May 22, 2015

Greely Commercial Center
GRADING PLAN

Client:
Alium Investments Ltd.
3338 Dufferin Street
Toronto, Ontario
M6A 3A4



WMI & Associates Limited
119 Collier Street
Barrie, Ontario
L4M 1H5
Ph 705-797-2027
www.wmiengineering.ca

Drawn By	TG	Checked By	JWL	Drawing No.	
Scale	1:500	Project No.	11-183		GR