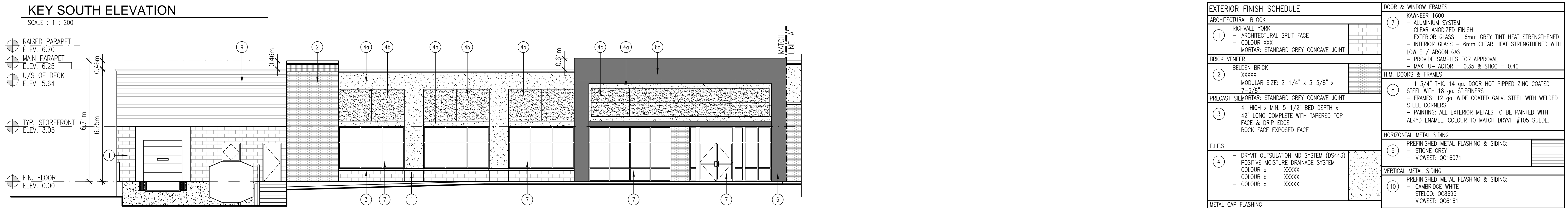


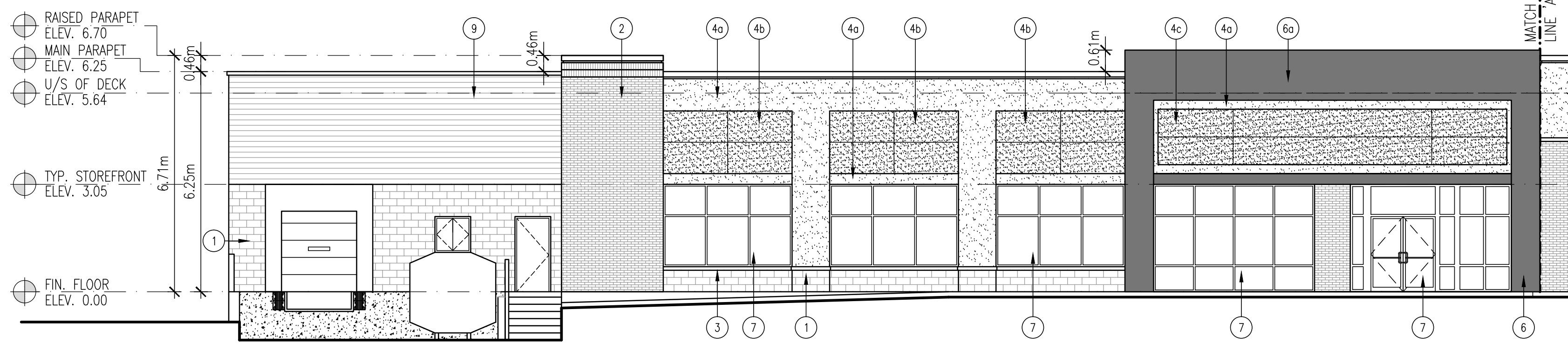
KEY NORTH ELEVATION

SCALE : 1 : 200



KEY SOUTH ELEVATION

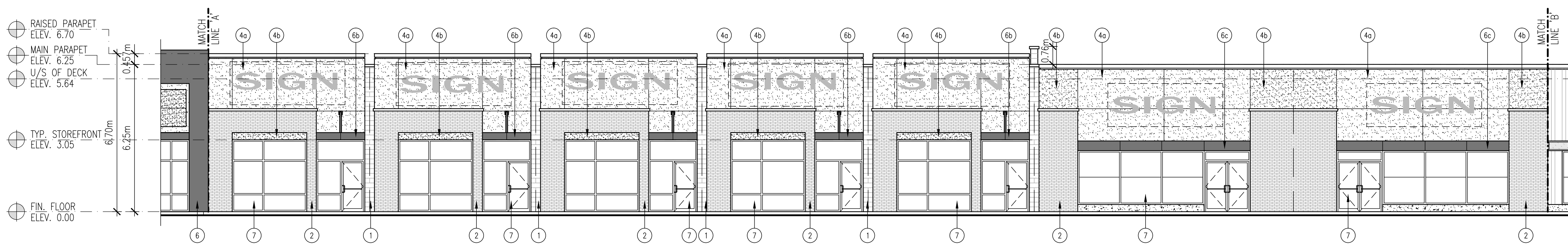
SCALE : 1 : 200



PART NORTH ELEVATION 'A'

FACING MITCH OWENS RD.

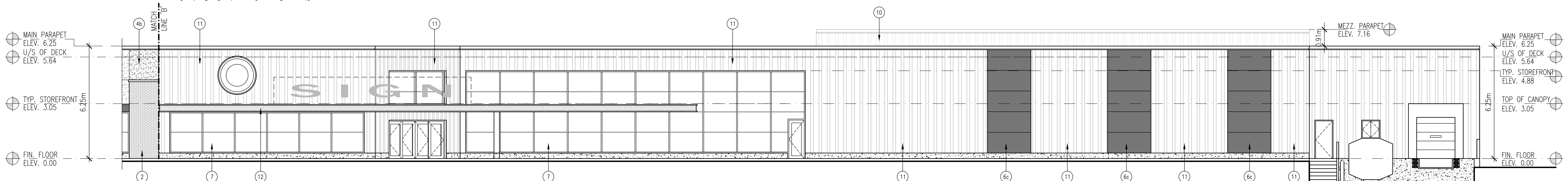
SCALE : 1 : 100



PART NORTH ELEVATION 'B'

FACING MITCH OWENS RD.

SCALE : 1 : 100



PART NORTH ELEVATION 'C'

FACING MITCH OWENS RD.

SCALE : 1 : 100

EXTERIOR FINISH SCHEDULE		DOOR & WINDOW FRAMES	
ARCHITECTURAL BLOCK	1	7	KAMNEER 1600
<ul style="list-style-type: none"> ARCHITECTURAL SPLIT FACE COLOUR XXX MORTAR: STANDARD GREY CONCAVE JOINT 		<ul style="list-style-type: none"> ALUMINIUM SYSTEM CLEAR ANODIZED FINISH EXTERIOR GLASS - 6mm GREY TINT HEAT STRENGTHENED INTERIOR GLASS - 6mm CLEAR HEAT STRENGTHENED WITH LOW E / ARGON GAS PROVIDE SAMPLES FOR APPROVAL MAX. U-FACTOR = 0.35 & SHGC = 0.40 	
BRICK VENEER	2	8	H.M. DOORS & FRAMES
<ul style="list-style-type: none"> BELDEN BRICK XXXXX MODULAR SIZE: 2-1/4" x 3-5/8" x 7-5/8" 		<ul style="list-style-type: none"> 1 3/4" THK. 14 ga. DOOR HOT PIPED ZINC COATED STEEL WITH 18 ga. STIFFENERS FRAMES: 12 ga. WIDE COATED GALV. STEEL WITH WELDED STEEL CORNERS PAINTING: ALL EXTERIOR METALS TO BE PAINTED WITH ALKYD ENAMEL. COLOUR TO MATCH DRIVIT #105 SUEDE. 	
PRECAST SILMORTAR: STANDARD GREY CONCAVE JOINT	3		
<ul style="list-style-type: none"> 4" HIGH x MIN. 5-1/2" BED DEPTH x 42" LONG COMPLETE WITH TAPERED TOP FACE & DRIP EDGE ROCK FACE EXPOSED FACE 			
E.I.F.S.	4	9	HORIZONTAL METAL SIDING
<ul style="list-style-type: none"> DRYVIT OUTSULATION MD SYSTEM (DS443) POSITIVE MOISTURE DRAINAGE SYSTEM COLOUR a XXXXX COLOUR b XXXXX COLOUR c XXXXX 		<ul style="list-style-type: none"> PREFINISHED METAL FLASHING & SIDING: STONE GREY VICWEST: QC16071 	
METAL CAP FLASHING	5	10	VERTICAL METAL SIDING
<ul style="list-style-type: none"> VICWEST 26 ga. PRE-FIN. METAL COLOUR a DARK BROWN CQ160621 		<ul style="list-style-type: none"> PREFINISHED METAL FLASHING & SIDING: CAMBRIDGE WHITE STELCO: QC8695 VICWEST: QC6161 	
ANODIZED COMPOSITE METAL (ACM) PANEL	6	11	BOARD AND BATTEN CLADDING
<ul style="list-style-type: none"> VICWEST SYSTEM 3 ARCHITECTURAL PANEL COLOUR a XXXXX COLOUR b XXXXX COLOUR c XXXXX 		<ul style="list-style-type: none"> XXXXXX XXXXXX 	
		12	BARN BOARD
			<ul style="list-style-type: none"> XXXXXX XXXXXX

A architectural
D design
A associates inc. architect

1880 assumption street, suite 100
 windsor ontario canada n8y 1c4
 ph 519.254.3430 fax 519.254.3642
 email - info@ada-architect.ca www.ada-architect.ca



stamp:	date (mm/dd/yy): issued for:
	SITE PLAN CONTROL SUBMISSION
	02/11/14

general notes:

- THIS PRINT IS AN INSTRUMENT OF SERVICE ONLY AND IS THE PROPERTY OF THE ARCHITECT.
- DRAWINGS SHALL NOT BE SCALED.
- CONTRACTORS SHALL VERIFY AND BE RESPONSIBLE FOR ALL DIMENSIONS AND CONDITIONS ON THE JOB AND THIS OFFICE MUST BE NOTIFIED OF ANY VARIATIONS FROM THE DIMENSIONS AND CONDITIONS SHOWN BY THESE DRAWINGS.
- ATTENTION IS DIRECTED TO PROVISIONS IN THE GENERAL CONDITIONS REGARDING CONTRACTOR'S RESPONSIBILITIES IN REGARD TO SUBMISSION OF SHOP DRAWINGS.
- IN THE EVENT THE ARCHITECT IS RETAINED TO REVIEW SHOP DRAWINGS, SUCH REVIEW IS ONLY TO CHECK FOR CONFORMANCE WITH DESIGN CONCEPT AND WITH THE INFORMATION GIVEN IN THE CONTRACT DOCUMENTS.
- CONTRACTORS SHALL PROMPTLY NOTIFY THE ARCHITECT IN WRITING OF THE EXISTENCE OF ANY OBSERVED VARIATIONS BETWEEN THE CONTRACT DOCUMENTS AND ANY APPLICABLE CODES OR BY-LAWS.
- THE ARCHITECT IS NOT RESPONSIBLE FOR THE CONTRACTOR'S MEANS, METHODS AND OR TECHNIQUES IN THE CONSTRUCTION OF THIS FACILITY.

project:
**PROPOSED COMMERCIAL DEVELOPMENT
 GREELY (SOUTH OTTAWA), ONT.**

client:
OTIS GROUP OF COMPANIES

drawing title:
ELEVATIONS BUILDING CRU1-9

scale: **AS SHOWN**

drawn by: **TC**

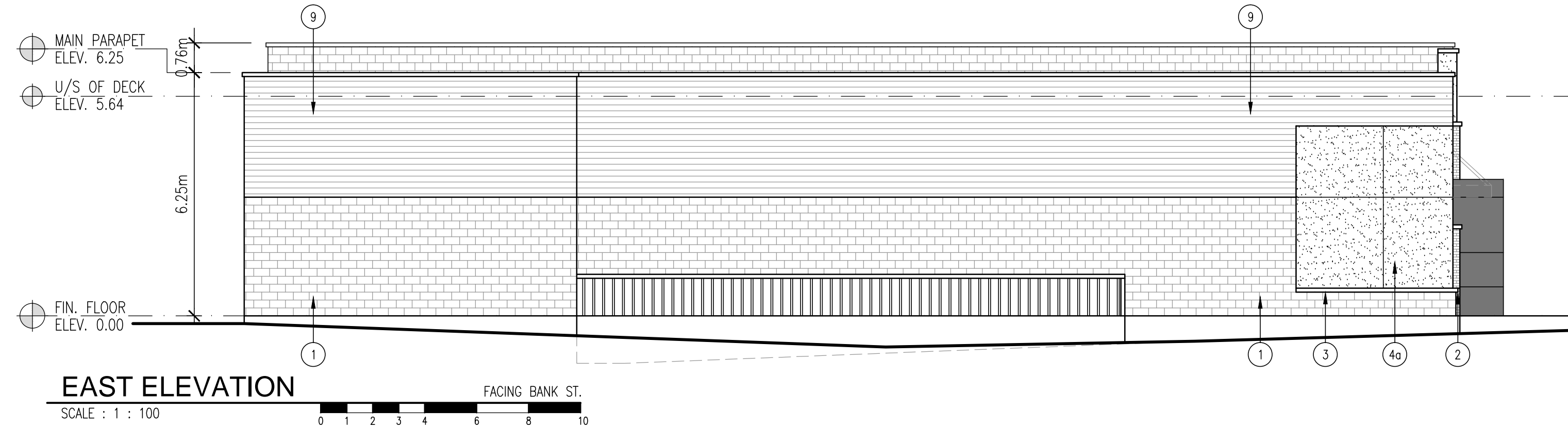
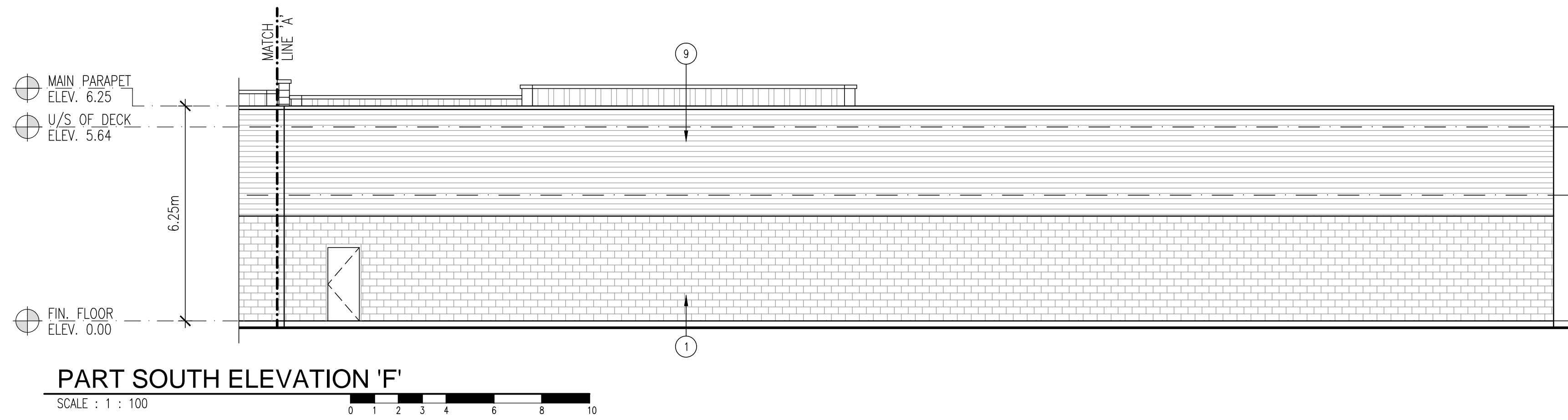
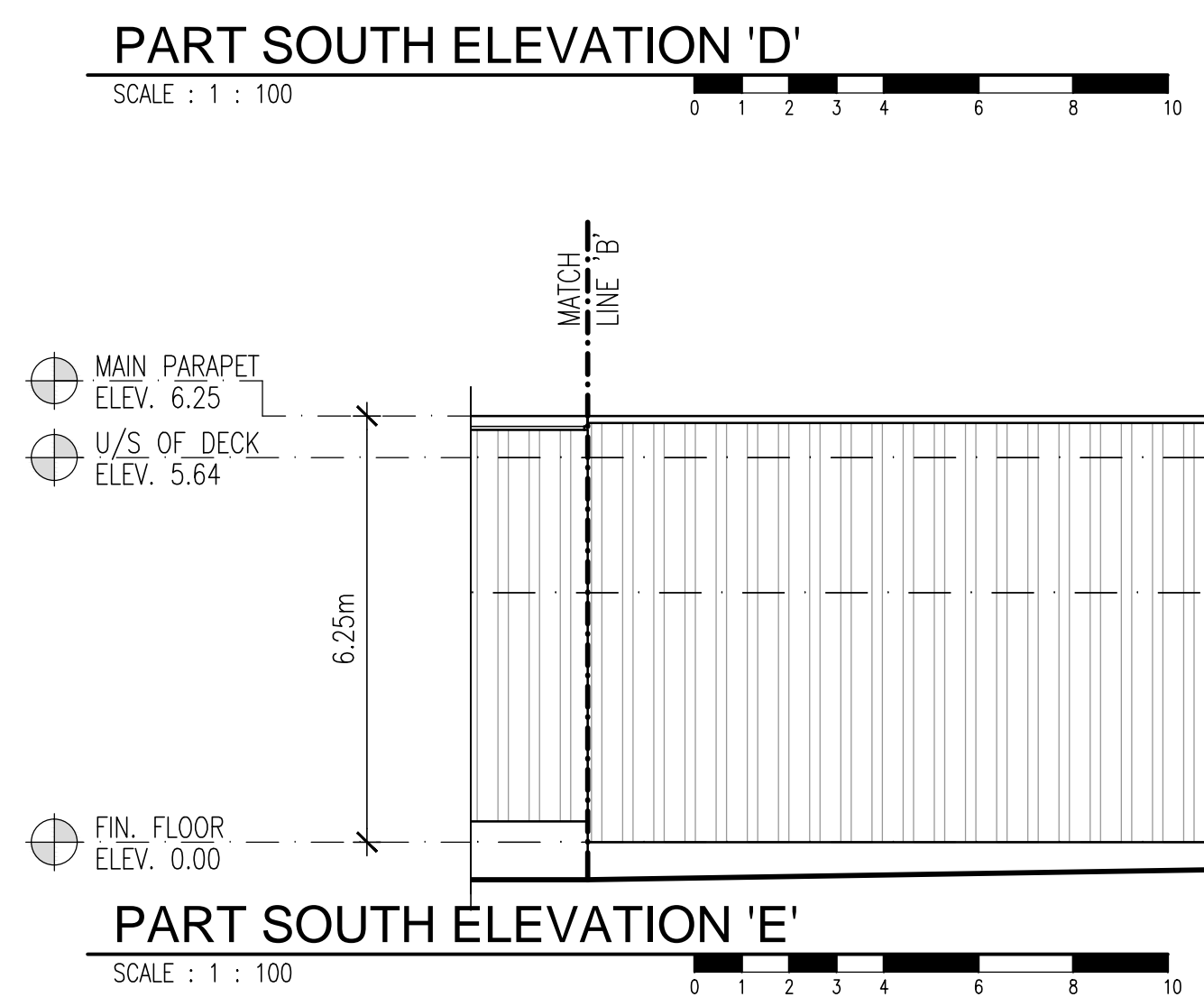
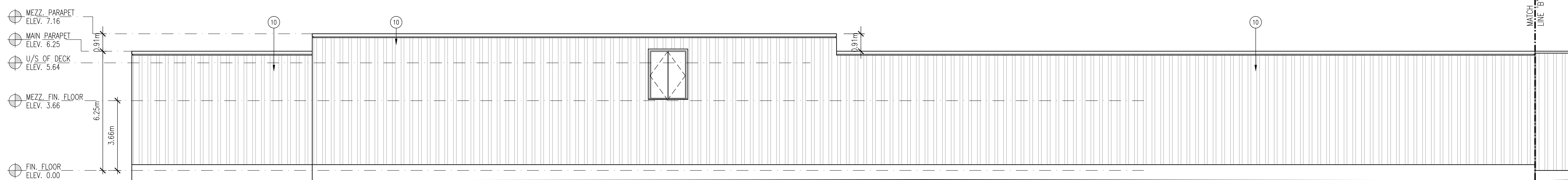
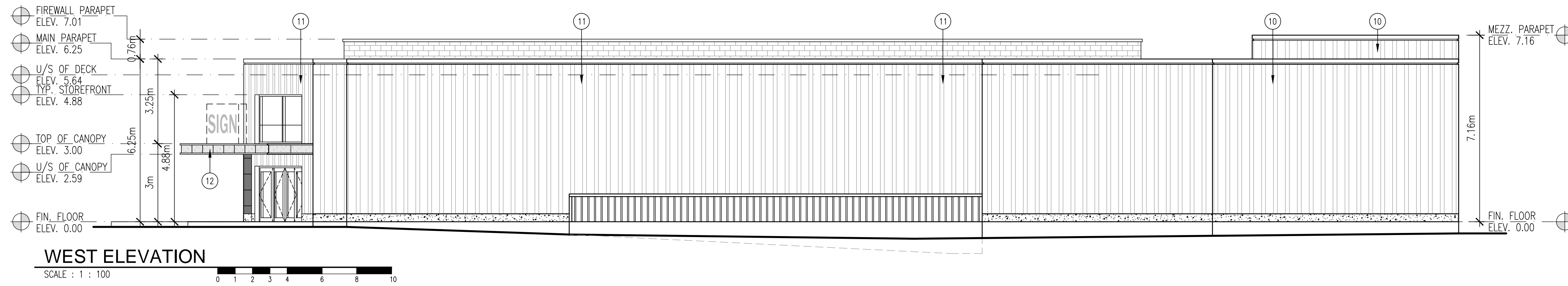
checked by: **SMB / TC**

date: **FEB. 2014**

comm. no.: **2010-060**

sheet no.: **A3.1a**





EXTERIOR FINISH SCHEDULE		DOOR & WINDOW FRAMES	
ARCHITECTURAL BLOCK	1 RICHVALE YORK - ARCHITECTURAL SPLIT FACE - COLOUR XXX - MORTAR: STANDARD GREY CONCAVE JOINT	7	KAWNEER 1600 - ALUMINIUM SYSTEM - CLEAR ANODIZED FINISH - EXTERIOR GLASS - 6mm GREY TINT HEAT STRENGTHENED - INTERIOR GLASS - 6mm CLEAR HEAT STRENGTHENED WITH LOW E / ARGON GAS - PROVIDE SAMPLES FOR APPROVAL - MAX. U-FACTOR = 0.35 & SHGC = 0.40
BRICK VENEER	2 BELDEN BRICK - XXXXX - MODULAR SIZE: 2-1/4" x 3-5/8" x 7-5/8"	8	H.M. DOORS & FRAMES - 1 3/4" THK. 14 ga. DOOR HOT PIPED ZINC COATED STEEL WITH 18 ga. STIFFENERS - FRAMES: 12 ga. WIDE COATED GALV. STEEL WITH WELDED STEEL CORNERS - PAINTING: ALL EXTERIOR METALS TO BE PAINTED WITH ALKYD ENAMEL. COLOUR TO MATCH DRIVIT #105 SUEDE.
PRECAST SILMORTAR: STANDARD GREY CONCAVE JOINT	3	4	HORIZONTAL METAL SIDING - PREFINISHED METAL FLASHING & SIDING: - STONE GREY - VICWEST: QC16071
E.I.F.S.	4 DRYVIT OUTSULATION MD SYSTEM (DS443) - POSITIVE MOISTURE DRAINAGE SYSTEM - COLOUR a XXXXX - COLOUR b XXXXX - COLOUR c XXXXX	5	VERTICAL METAL SIDING - PREFINISHED METAL FLASHING & SIDING: - CAMBRIDGE WHITE - STELCO: OC8695 - VICWEST: QC6161
METAL CAP FLASHING	5 VICWEST - 26 ga. PRE-FIN. METAL - COLOUR a DARK BROWN CQ160621	6	BOARD AND BATTEN CLADDING - XXXXX - XXXXX
ANODIZED COMPOSITE METAL (ACM) PANEL	6 VICWEST SYSTEM 3 - ARCHITECTURAL PANEL - COLOUR a XXXXX - COLOUR b XXXXX - COLOUR c XXXXX	9	BARN BOARD - XXXXX - XXXXX

A architectural
D design
A associates inc. architect

1880 assumption street, suite 100
 windsor ontario canada n8y 1c4
 ph 519.254.3430 fax 519.254.3642
 email - info@ada-architect.ca www.ada-architect.ca

stamp:

date (mm/dd/yy):	issued for:
02/11/14	SITE PLAN CONTROL SUBMISSION

general notes:

- THIS PRINT IS AN INSTRUMENT OF SERVICE ONLY AND IS THE PROPERTY OF THE ARCHITECT.
- DRAWINGS SHALL NOT BE SCALED.
- CONTRACTORS SHALL VERIFY AND BE RESPONSIBLE FOR ALL DIMENSIONS AND CONDITIONS ON THE JOB AND THIS OFFICE MUST BE NOTIFIED OF ANY VARIATIONS FROM THE DIMENSIONS AND CONDITIONS SHOWN BY THESE DRAWINGS.
- ATTENTION IS DIRECTED TO PROVISIONS IN THE GENERAL CONDITIONS REGARDING CONTRACTOR'S RESPONSIBILITIES IN REGARD TO SUBMISSION OF SHOP DRAWINGS.
- IN THE EVENT THE ARCHITECT IS RETAINED TO REVIEW SHOP DRAWINGS, SUCH REVIEW IS ONLY TO CHECK FOR CONFORMANCE WITH DESIGN CONCEPT AND WITH THE INFORMATION GIVEN IN THE CONTRACT DOCUMENTS.
- CONTRACTORS SHALL PROMPTLY NOTIFY THE ARCHITECT IN WRITING OF THE EXISTENCE OF ANY OBSERVED VARIATIONS BETWEEN THE CONTRACT DOCUMENTS AND ANY APPLICABLE CODES OR BY-LAWS.
- THE ARCHITECT IS NOT RESPONSIBLE FOR THE CONTRACTOR'S MEANS, METHODS AND OR TECHNIQUES IN THE CONSTRUCTION OF THIS FACILITY.

project:
**PROPOSED COMMERCIAL DEVELOPMENT
 GREELY (SOUTH OTTAWA), ONT.**

client:
OTIS GROUP OF COMPANIES

drawing title:
ELEVATIONS BUILDING CRU1-9

scale: AS SHOWN

drawn by: TC

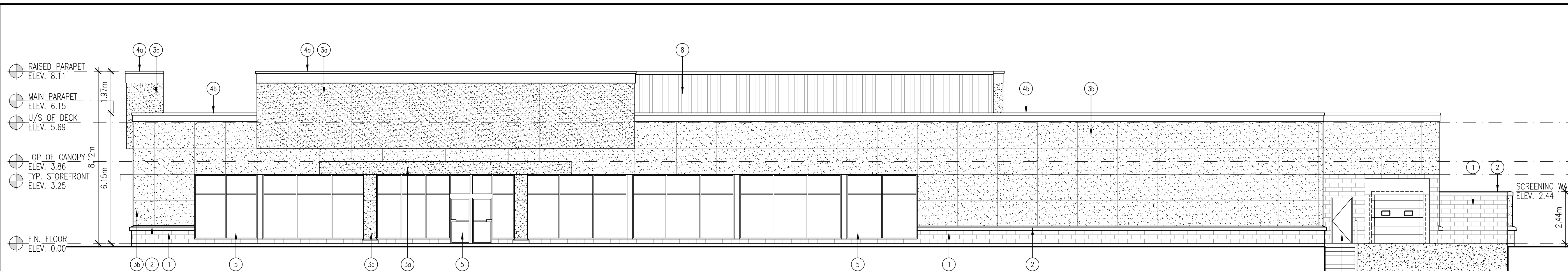
checked by: SMB / TC

date: FEB. 2014

comm. no.: 2010-060

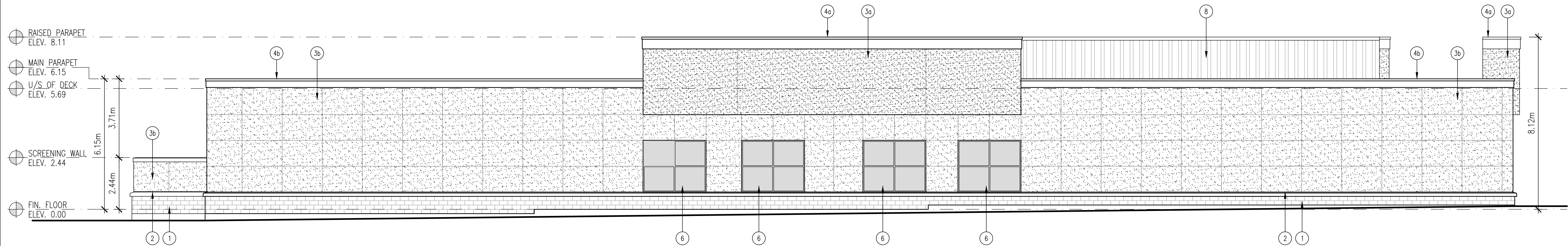
sheet no.:

A3.1b



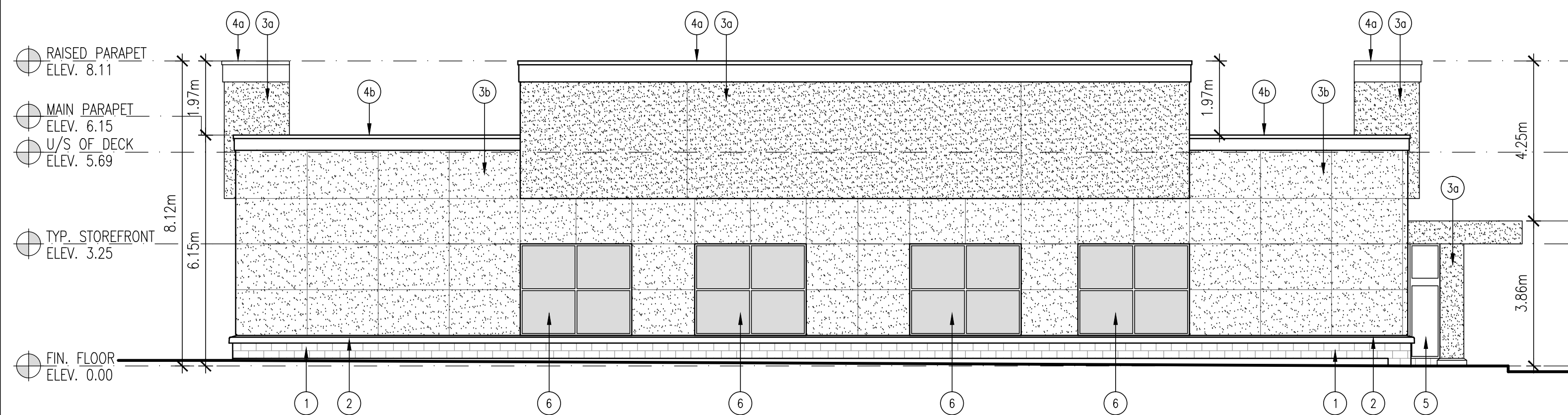
WEST ELEVATION

SCALE : 1 : 100



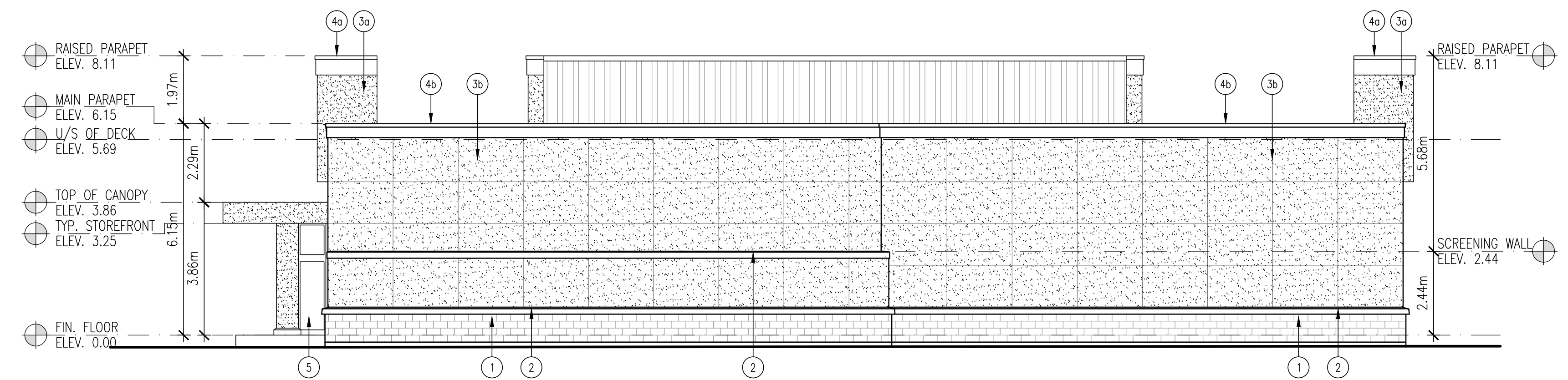
EAST ELEVATION

SCALE : 1 : 100 FACING BANK ST.



NORTH ELEVATION

SCALE : 1 : 100 FACING MITCH OWENS RD.



SOUTH ELEVATION

SCALE : 1 : 100

EXTERIOR FINISH SCHEDULE	
ARCHITECTURAL BLOCK	
1	RICHVALE YORK - STANDARD CONCRETE BLOCK - COLOUR LIGHT GREY, 8"x16"x4"-SMOOTH FINISH - GROUT COLOUR - STANDARD GREY
PRECAST SILL	
2	- 8" HIGH x MIN. 5 1/2" BED DEPTH x 42" LONG - COMPLETE WITH TAPERED TOP FACE & DRIP EDGE - NATURAL FINISH
E.I.F.S.	
3	DRYVIT OUTSULATION MD SYSTEM (D5443) POSITIVE MOISTURE DRAINAGE SYSTEM - COLOUR a DRYVIT NO. NA2-13-10-26-12 "SHOPPERS RED 2002" DURABOND 99-SD01C-9166 DRYVIT NO. NA2-13-10-26-25 "SHOPPERS WHITE" DURABOND 99-SD03C-10716 DRYVIT NO. NA2-13-10-26-26 "CAMBRIDGE WHITE" DURABOND 99-SD04C-8436
METAL CAP FLASHING	
4	26 ga. PRE-FIN. METAL - COLOUR a CAMBRIDGE WHITE STELCO: QC8695 VICWEST: QC6161 - COLOUR b GREY PREFINISHED METAL STONE GREY STELCO: QC 8305 VICWEST: QC6071
DOOR & WINDOW FRAMES	
5	KAWNEER 1600 - ALUMINUM SYSTEM - CLEAR ANODIZED FINISH - EXTERIOR GLASS - 6mm GREY TINT HEAT STRENGTHENED - INTERIOR GLASS - 6mm CLEAR HEAT STRENGTHENED WITH LOW E / ARGON GAS - PROVIDE SAMPLES FOR APPROVAL - MAX. U-FACTOR = 0.35 & SHGC = 0.40
SPANDREL GLASS PANELS	
6	- NON TINTED FIXED OPAQUE SPANDREL GLASS PANEL - INSULATED METAL BACK PAN COLOUR GREY WITH GREY BACK SCRM. - CLEAR ANODIZED ALUMINUM FRAMING. - GLAZING: INKAN NO. 0-125-1 (PROVIDE SAMPLE FOR APPROVAL) SECURITY FILM PROVIDED BY G.C. - SECURITY FILM: 3M SCOTCHSHIELD ULTRA600 - CLEAR, TO BE INSTALLED BY CERTIFIED 3M APPLICATOR. - FACTORY APPLIED SECURITY FILM ON INTERIOR FACE OF GLASS TO WRAP AROUND ALL EDGES FOR PROPER SECURING WITHIN WINDOW FRAME. - IF SITE APPLIED, PROVIDE 3M ULTRA FLEX WINDOW SYSTEM SEALANT AT ALL WINDOW PERIMETER EDGES IN LIEU OF RUBBER GASKET.
H.M. DOORS & FRAMES	
7	- 1 3/4" THK. 14 ga. DOOR HOT PIPED ZINC COATED STEEL WITH 18 ga. STIFFENERS - FRAMES: 12 ga. WIDE COATED GALV. STEEL WITH WELDED STEEL CORNERS - PAINTING: ALL EXTERIOR METALS TO BE PAINTED WITH ALKYD ENAMEL COLOUR TO MATCH SHOPPERS WHITE
VERTICAL METAL SIDING	
8	PREFINISHED METAL FLASHING & SIDING: - CAMBRIDGE WHITE - STELCO: QC8695 - VICWEST: QC6161

A architectural
D design
A associates
inc. architect

1880 assumption street, suite 100
windsor ontario canada n8y 1c4
ph 519.254.3430 fax 519.254.3642
email - info@ada-architect.ca www.ada-architect.ca



stamp:



date (mm/dd/yy): issued for:

02/11/14 SITE PLAN CONTROL SUBMISSION

general notes:

- THIS PRINT IS AN INSTRUMENT OF SERVICE ONLY AND IS THE PROPERTY OF THE ARCHITECT.
- DRAWINGS SHALL NOT BE SCALED.
- CONTRACTORS SHALL VERIFY AND BE RESPONSIBLE FOR ALL DIMENSIONS AND CONDITIONS ON THE JOB AND THIS OFFICE MUST BE NOTIFIED OF ANY VARIATIONS FROM THE DIMENSIONS AND CONDITIONS SHOWN BY THESE DRAWINGS.
- ATTENTION IS DIRECTED TO PROVISIONS IN THE GENERAL CONDITIONS REGARDING CONTRACTOR'S RESPONSIBILITIES IN REGARD TO SUBMISSION OF SHOP DRAWINGS.
- IN THE EVENT THE ARCHITECT IS RETAINED TO REVIEW SHOP DRAWINGS, SUCH REVIEW IS ONLY TO CHECK FOR CONFORMANCE WITH DESIGN CONCEPT AND WITH THE INFORMATION GIVEN IN THE CONTRACT DOCUMENTS.
- CONTRACTORS SHALL PROMPTLY NOTIFY THE ARCHITECT IN WRITING OF THE EXISTENCE OF ANY OBSERVED VARIATIONS BETWEEN THE CONTRACT DOCUMENTS AND ANY APPLICABLE CODES OR BY-LAWS.
- THE ARCHITECT IS NOT RESPONSIBLE FOR THE CONTRACTOR'S MEANS, METHODS AND/OR TECHNIQUES IN THE CONSTRUCTION OF THIS FACILITY.

project:

PROPOSED COMMERCIAL DEVELOPMENT
GREELY (SOUTH OTTAWA), ONT.

client:

OTIS GROUP OF COMPANIES

drawing title:

ELEVATIONS BUILDING CRU10

scale: AS SHOWN

drawn by: TC

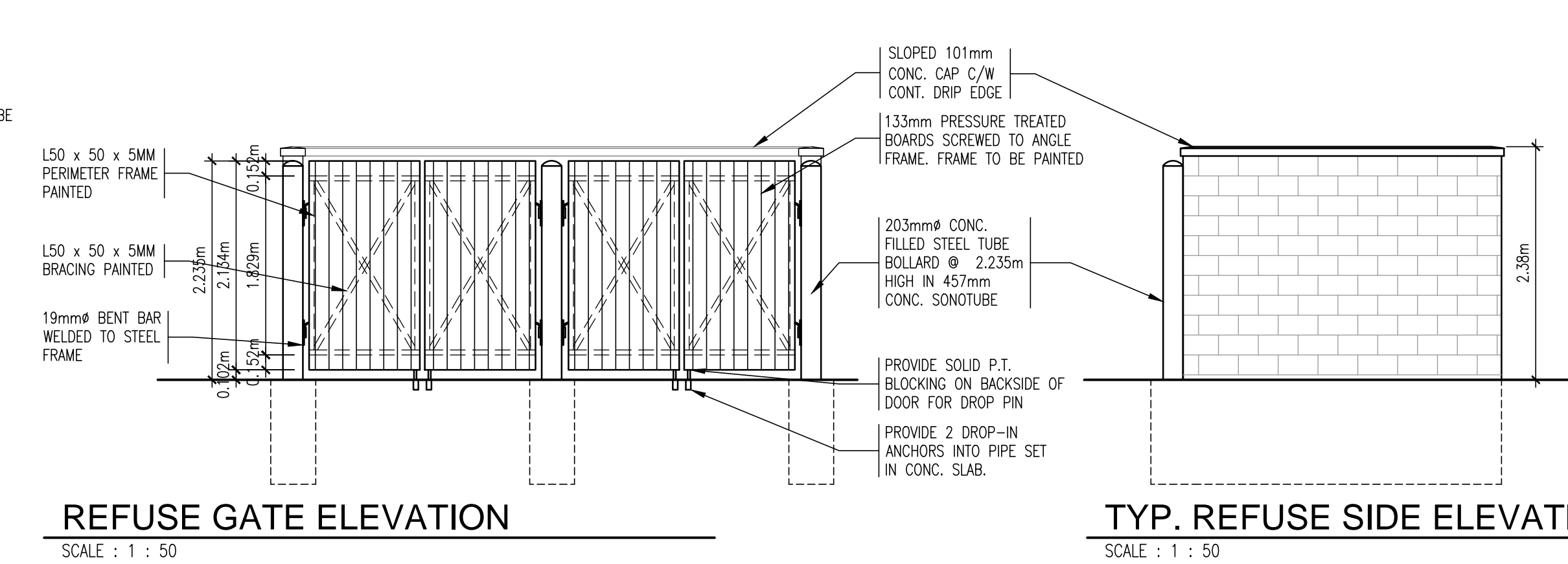
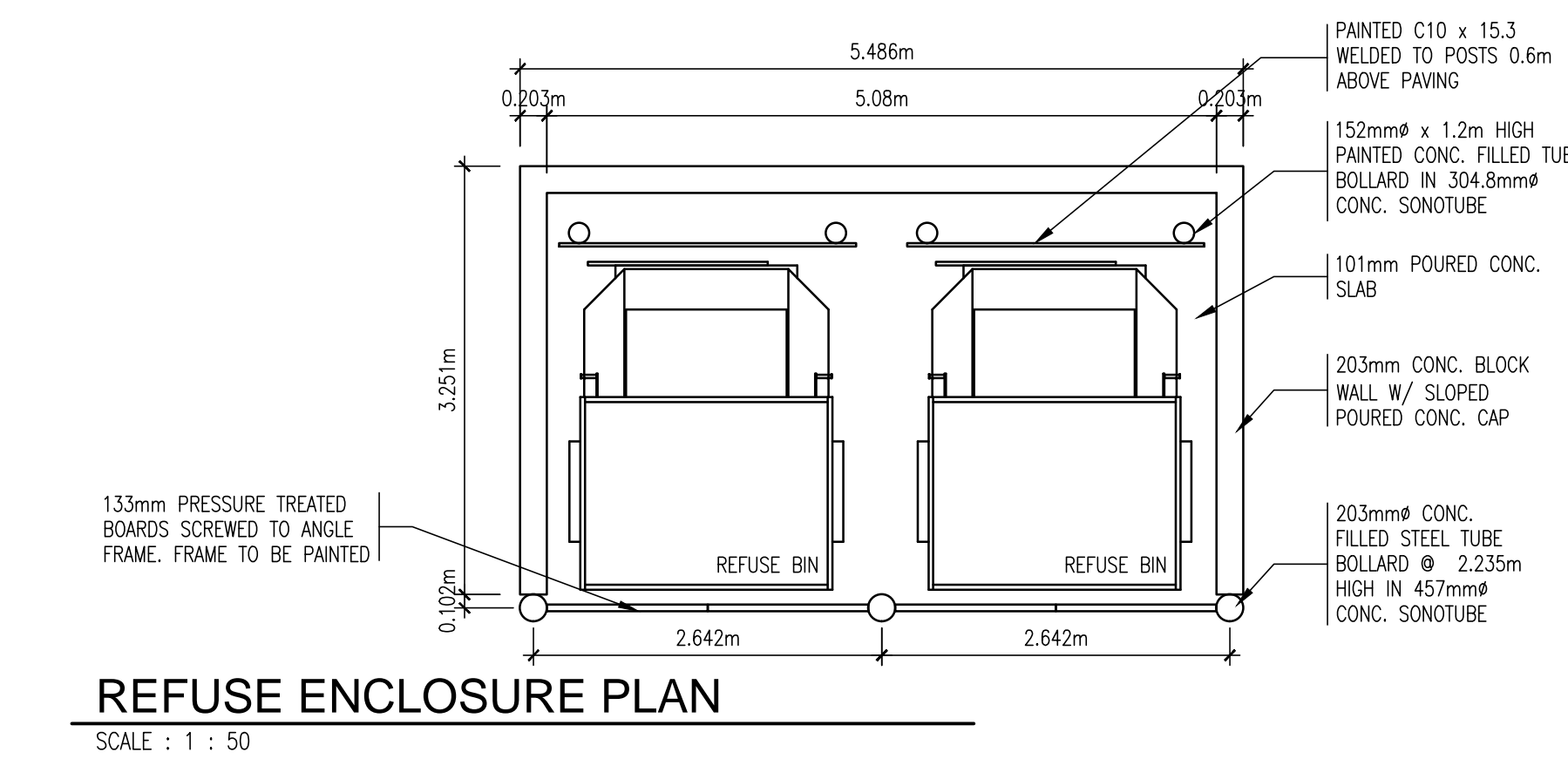
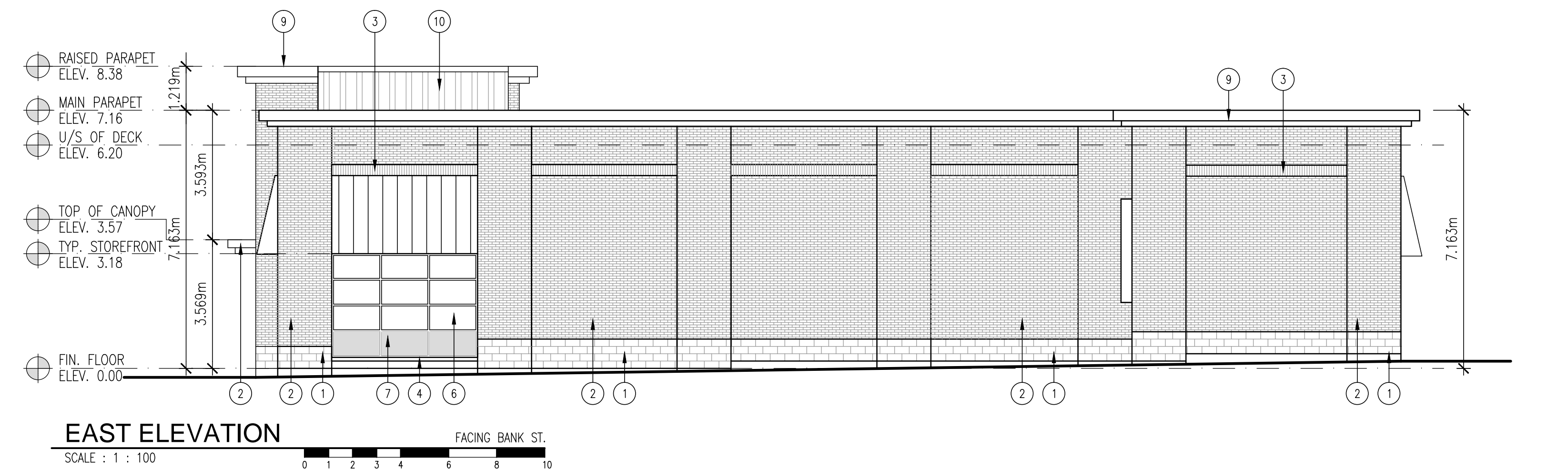
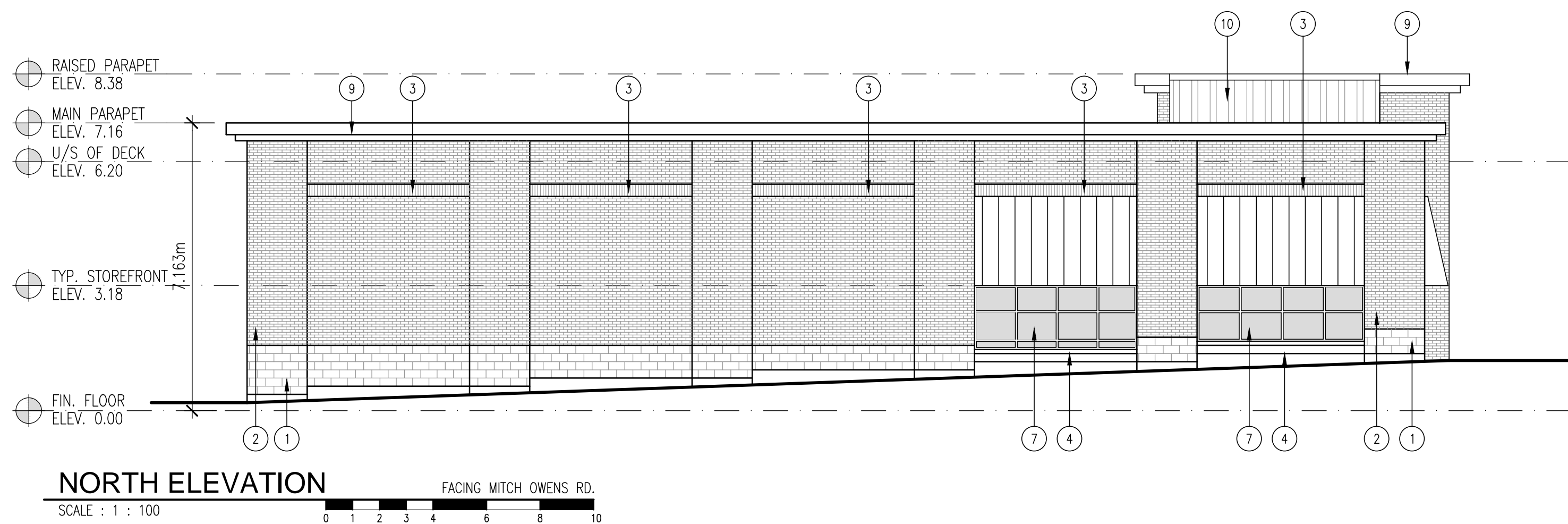
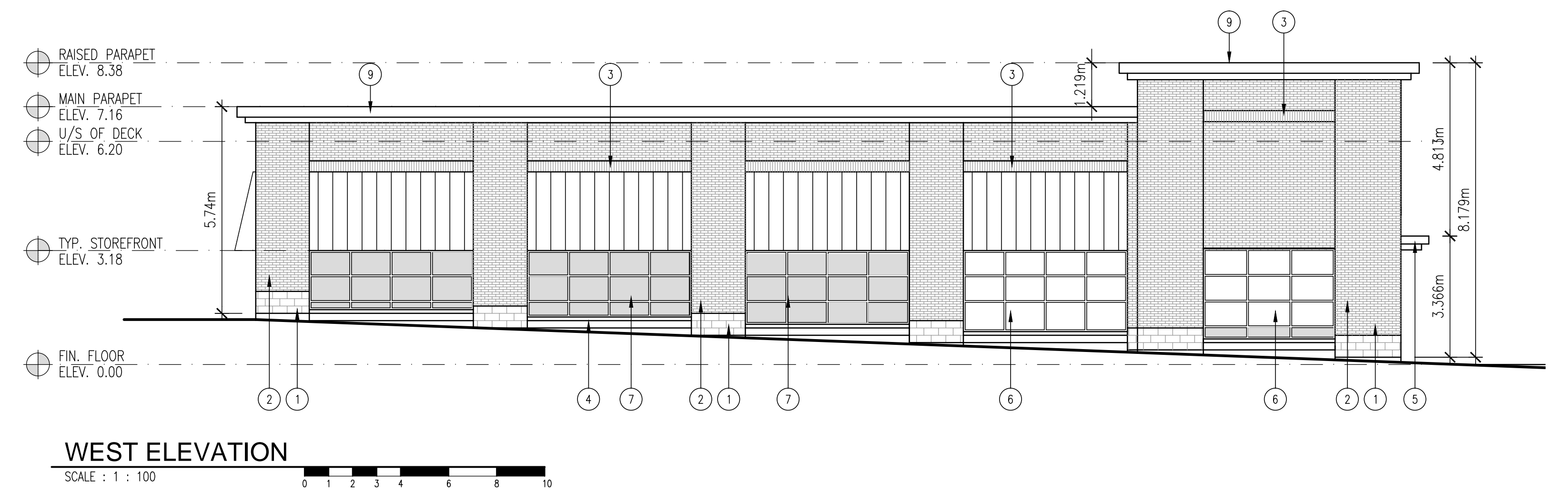
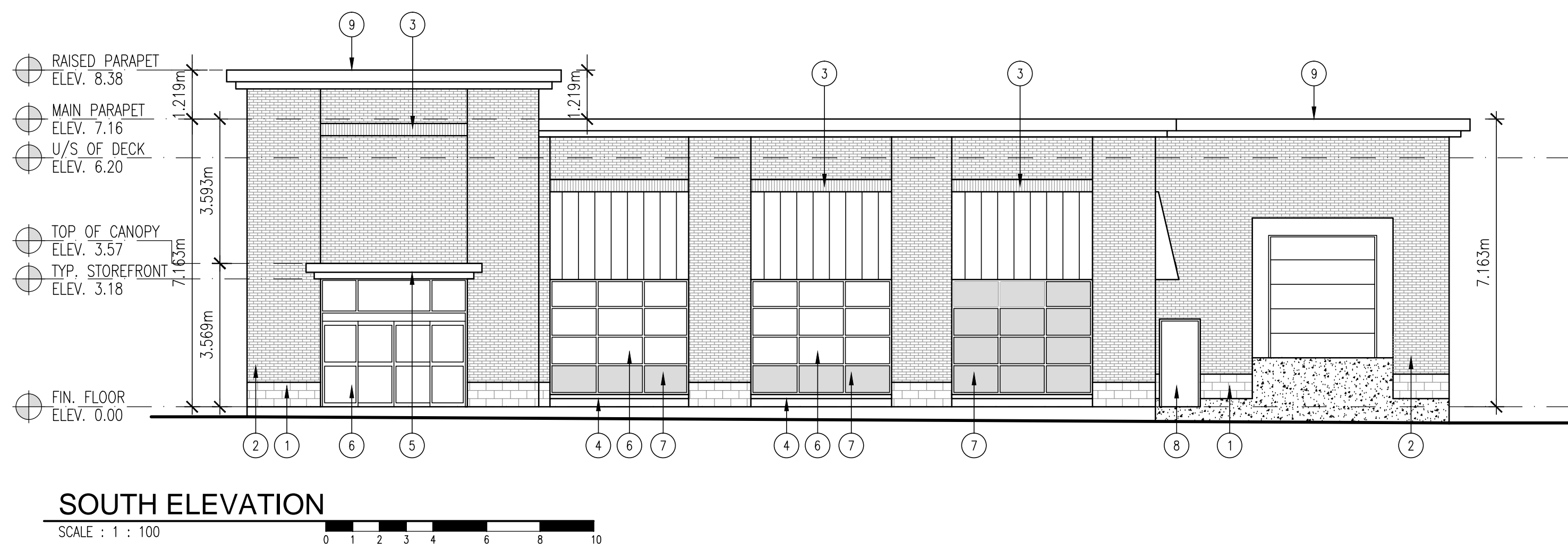
checked by: SMB / TC

date: FEB. 2014

comm. no.: 2010-060

sheet no.:

A3.1c



EXTERIOR FINISH SCHEDULE	
CONC. BLOCK BASE	ALUMINUM COMPOSITE PANEL
1 RICHVALE YORK - PRODUCT: PERMACON GROUP NOBLE ARCHITECTURAL BLOCK - COLOUR: 'CHARCOAL' - FINISH: BUFF W/ SEALER - SIZE: 7 7/8" H. X 2 3/8" L. X 3/8" D. - MORTAR COLOUR: NATURAL GREY	5 CANOPIES ONLY - COLOUR: BRIGHT SILVER - CATEGORY: REYNOLDBOND DRY-SET ALUMINUM COMPOSITE BUILDING PANEL SYSTEM
BRICK VENEER	DOOR AND WINDOW FRAMES:
2 PERMACON GROUP - COLOUR: 'SIERRA SANDSTONE SMOOTH' - SIZE: 90mm H. x 90mm D. x 290mm L. (METRIC JUMBO FORMAT) - MORTAR COLOUR: NATURAL GREY	6 - MANUFACTURER: KAMNEER - CATEGORY: ALUMILITE - CLEAR ANODIZED FINISH - COLOUR: #17 CLEAR
BRICK VENEER SOLDIER COURSE	SPANDREL GLASS:
3 PRODUCT: NOBLE ARCHITECTURAL BLOCK - COLOUR: 'CHARCOAL' - FINISH: BUFF - SIZE: 3 7/8" HIGH x 1 1/8" LONG x 3/8" DEEP - MORTAR COLOUR: NATURAL GREY	7 - COLOUR: TO MATCH SICO #6206-31 'SKETCH' - G.C. TO PROVIDE SAMPLE FOR APPROVAL.
PRECAST SILL	MAN DOORS:
4 - 3-5/8" HIGH x MIN. 5-5/8" DEEP COMPLETE WITH TAPERED TOP FACE & DRIP EDGE - COLOUR: CHARCOAL, FINISH: BUFF W/ SEALER - ROCK FACE EXPOSED FACE	8 - COLOUR: BENJAMIN MOORE #HC-34 'WILMINGTON - TAN' (EXTERIOR GRADE)
	PREFINISHED METAL FLASHING
	9 - PREFINISHED METAL FLASHING (EXTERIOR FLASHING & HIGH PARAPET) - COLOUR: BRIGHT SILVER
	VERTICAL METAL SIDING
	10 - PREFINISHED METAL FLASHING & SIDING: - CAMBRIDGE, WHITE - STELO: Q0695 - VIEWEST: Q06161

A architectural
D design
A associates inc. architect

1880 assumption street, suite 100
windsor ontario canada n8y 1c4
ph 519.254.3430 fax 519.254.3642
email - info@ada-architect.ca www.ada-architect.ca

stamp:

date (mm/dd/yy): issued for:

02/11/14	SITE PLAN CONTROL SUBMISSION

general notes:

- THIS PRINT IS AN INSTRUMENT OF SERVICE ONLY AND IS THE PROPERTY OF THE ARCHITECT.
- DRAWINGS SHALL NOT BE SCALED.
- CONTRACTORS SHALL VERIFY AND BE RESPONSIBLE FOR ALL DIMENSIONS AND CONDITIONS ON THE JOB AND THIS OFFICE MUST BE NOTIFIED OF ANY VARIATIONS FROM THE DIMENSIONS AND CONDITIONS SHOWN BY THESE DRAWINGS.
- ATTENTION IS DIRECTED TO PROVISIONS IN THE GENERAL CONDITIONS REGARDING CONTRACTOR'S RESPONSIBILITIES IN REGARD TO SUBMISSION OF SHOP DRAWINGS.
- IN THE EVENT THE ARCHITECT IS RETAINED TO REVIEW SHOP DRAWINGS, SUCH REVIEW IS ONLY TO CHECK FOR CONFORMANCE WITH DESIGN CONCEPT AND WITH THE INFORMATION GIVEN IN THE CONTRACT DOCUMENTS.
- CONTRACTORS SHALL PROMPTLY NOTIFY THE ARCHITECT IN WRITING OF THE EXISTENCE OF ANY OBSERVED VARIATIONS BETWEEN THE CONTRACT DOCUMENTS AND ANY APPLICABLE CODES OR BY-LAWS.
- THE ARCHITECT IS NOT RESPONSIBLE FOR THE CONTRACTOR'S MEANS, METHODS AND/OR TECHNIQUES IN THE CONSTRUCTION OF THIS FACILITY.

project:
**PROPOSED COMMERCIAL DEVELOPMENT
GREELY (SOUTH OTTAWA), ONT.**

client:
OTIS GROUP OF COMPANIES

drawing title:
ELEVATIONS BUILDING CRU11

scale: **AS SHOWN**

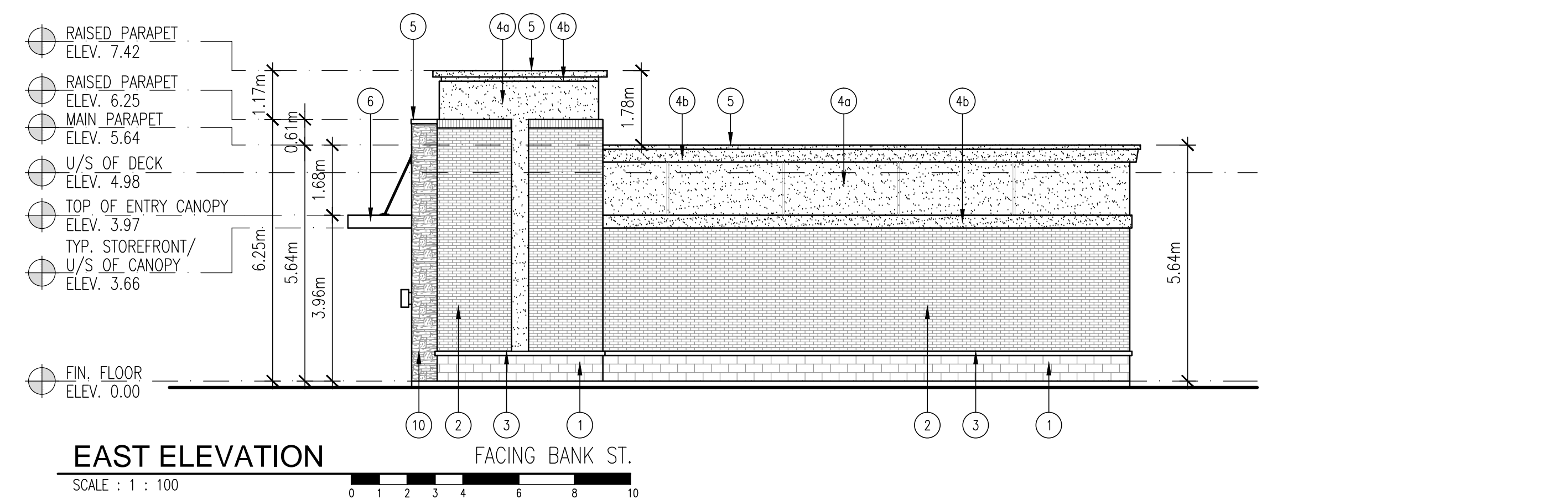
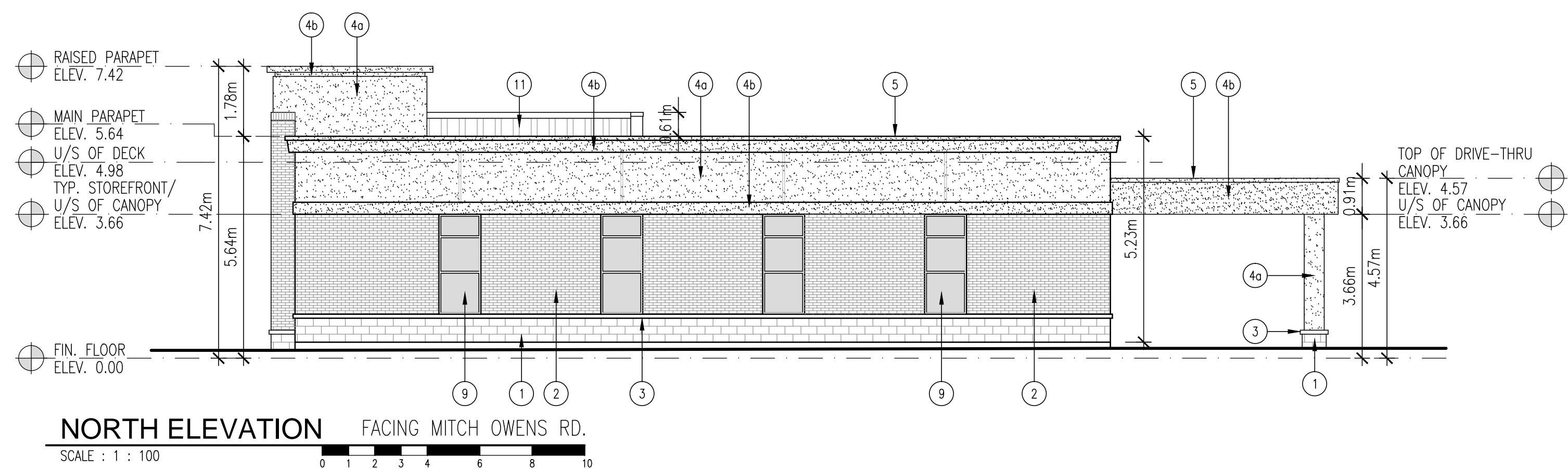
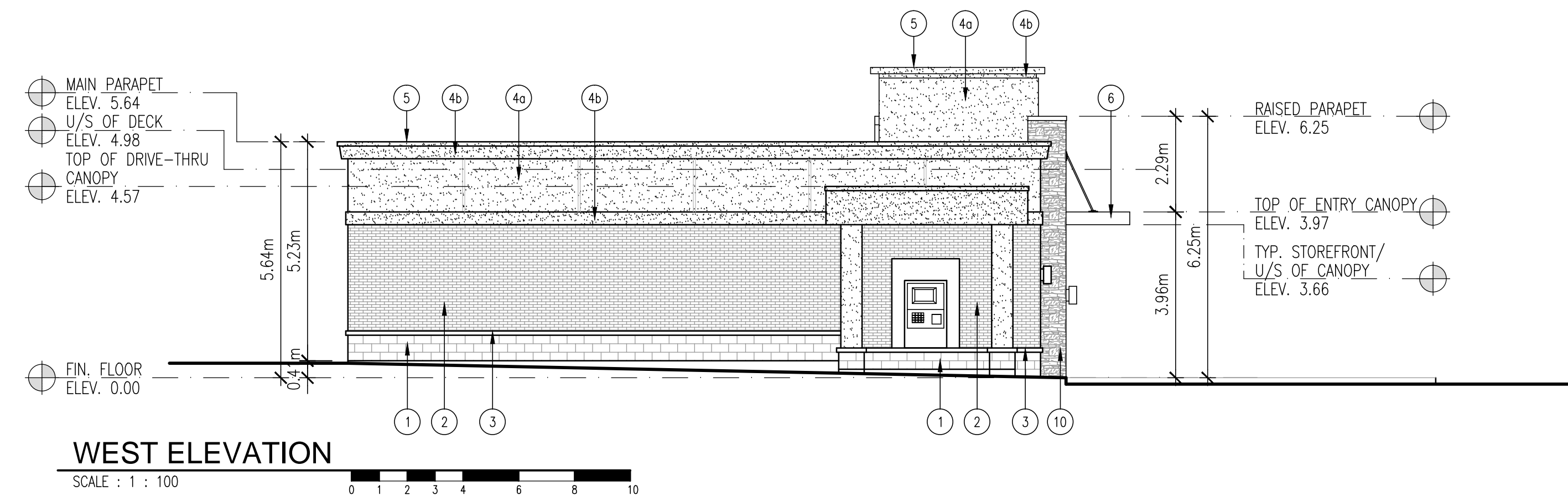
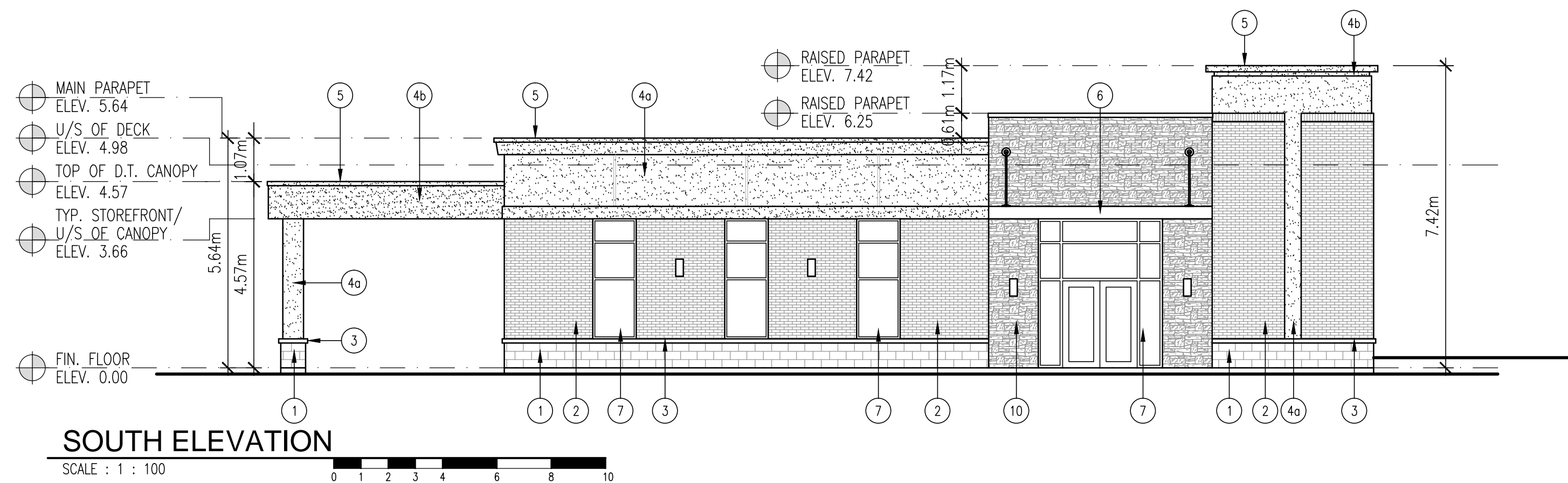
drawn by: **TC**

checked by: **SMB / TC**

date: **FEB. 2014**

comm. no.: **2010-060**

sheet no.: **A3.1d**



EXTERIOR FINISH SCHEDULE	E.I.F.S.	DOOR & WINDOW FRAMES	SPANDREL GLASS PANELS
ARCHITECTURAL BLOCK ① RICHVALE YORK - ARCHITECTURAL SPLIT FACE - COLOUR LIGHT GREY, 8"x16"x4"-SMOOTH FINISH - GROUT COLOUR - STANDARD GREY	④ - DRYVIT OUTSULATION MD SYSTEM (DS443) POSITIVE MOISTURE DRAINAGE SYSTEM - COLOUR a XXXXX - COLOUR b XXXXX	⑦ KAWNEER 1600 - ALUMINIUM SYSTEM - CLEAR ANODIZED FINISH - EXTERIOR GLASS - 6mm GREY TINT HEAT STRENGTHENED - INTERIOR GLASS - 6mm CLEAR HEAT STRENGTHENED WITH LOW E / ARGON GAS - PROVIDE SAMPLES FOR APPROVAL - MAX. U-FACTOR = 0.35 & SHGC = 0.40	⑨ - NON TINTED FIXED OPAQUE SPANDREL GLASS PANEL. - INSULATED METAL BACK PAN COLOUR GREY WITH GREY BACK SCRM. - CLEAR ANODIZED ALUMINIUM FRAMING. - GLAZING: INKMAN NO. 0-125-1 (PROVIDE SAMPLE FOR APPROVAL)
BRICK VENEER ② BELDEN BRICK - XXXXX - MODULAR SIZE: 2-1/4" x 3-5/8" x 7-5/8" - MORTAR: STANDARD GREY CONCAVE JOINT	⑤ - VICWEST - 26 ga. PRE-FIN. METAL - COLOUR a DARK BROWN CQ160621	H.M. DOORS & FRAMES ⑧ - 1-3/4" THK. 14 ga. DOOR HOT PIPED ZINC COATED STEEL WITH 18 ga. STIFFENERS - FRAMES: 12 ga. WIDE COATED GALV. STEEL WITH WELDED STEEL CORNERS - PAINTING: ALL EXTERIOR METALS TO BE PAINTED WITH ALKYD ENAMEL. COLOUR TO MATCH DRYVIT #105 SUEDE.	CULTURED STONE FINISH ⑩ - XXXXX - XXXXX
PRECAST SILL ③ - 4" HIGH x MIN. 5-1/2" BED DEPTH x 42" LONG COMPLETE WITH TAPERED TOP FACE & DRIP EDGE - ROCK FACE EXPOSED FACE	⑥ ANODIZED COMPOSITE METAL (ACM) PANEL - VICWEST SYSTEM 3 - ARCHITECTURAL PANEL - BGY GREY		VERTICAL METAL SIDING ⑪ PREFINISHED METAL FLASHING & SIDING: - CAMBRIDGE WHITE - STELCO: QC8695 - VICWEST: QC6161

A architectural
D design
A associates inc. architect

1880 assumption street, suite 100
windsor ontario canada n8y 1c4
ph 519.254.3430 fax 519.254.3642
email - info@ada-architect.ca www.ada-architect.ca



stamp:



date (mm/dd/yy): issued for:

02/11/14	SITE PLAN CONTROL SUBMISSION

general notes:

- THIS PRINT IS AN INSTRUMENT OF SERVICE ONLY AND IS THE PROPERTY OF THE ARCHITECT.
- DRAWINGS SHALL NOT BE SCALED.
- CONTRACTORS SHALL VERIFY AND BE RESPONSIBLE FOR ALL DIMENSIONS AND CONDITIONS ON THE JOB AND THIS OFFICE MUST BE NOTIFIED OF ANY VARIATIONS FROM THE DIMENSIONS AND CONDITIONS SHOWN BY THESE DRAWINGS.
- ATTENTION IS DIRECTED TO PROVISIONS IN THE GENERAL CONDITIONS REGARDING CONTRACTOR'S RESPONSIBILITIES IN REGARD TO SUBMISSION OF SHOP DRAWINGS.
- IN THE EVENT THE ARCHITECT IS RETAINED TO REVIEW SHOP DRAWINGS, SUCH REVIEW IS ONLY TO CHECK FOR CONFORMANCE WITH DESIGN CONCEPT AND WITH THE INFORMATION GIVEN IN THE CONTRACT DOCUMENTS.
- CONTRACTORS SHALL PROMPTLY NOTIFY THE ARCHITECT IN WRITING OF THE EXISTENCE OF ANY OBSERVED VARIATIONS BETWEEN THE CONTRACT DOCUMENTS AND ANY APPLICABLE CODES OR BY-LAWS.
- THE ARCHITECT IS NOT RESPONSIBLE FOR THE CONTRACTOR'S MEANS, METHODS AND/OR TECHNIQUES IN THE CONSTRUCTION OF THIS FACILITY.

project:

PROPOSED COMMERCIAL DEVELOPMENT
GREELY (SOUTH OTTAWA), ONT.

client:

OTIS GROUP OF COMPANIES

drawing title:

ELEVATIONS BUILDING CRU12

scale:

AS SHOWN

drawn by:

TC

checked by:

SMB / TC

date:

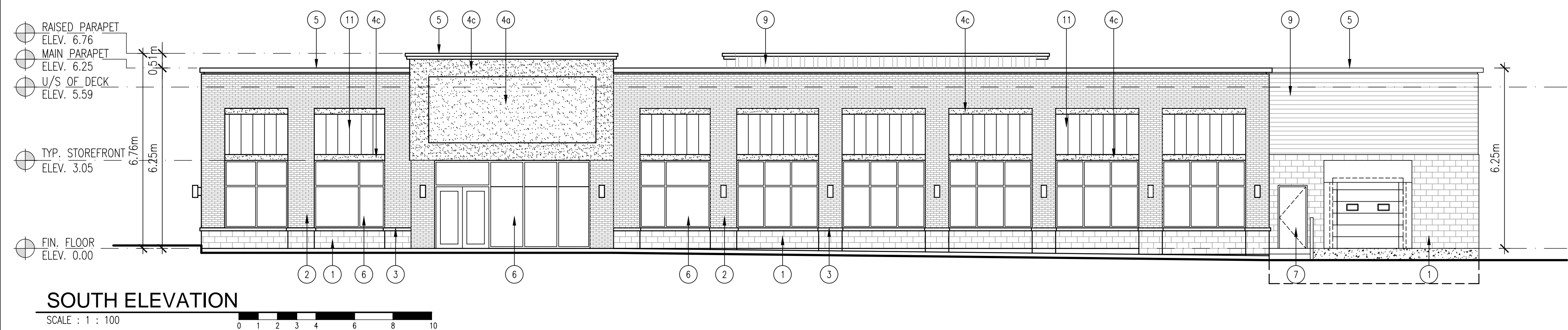
FEB. 2014

comm. no.:

2010-060

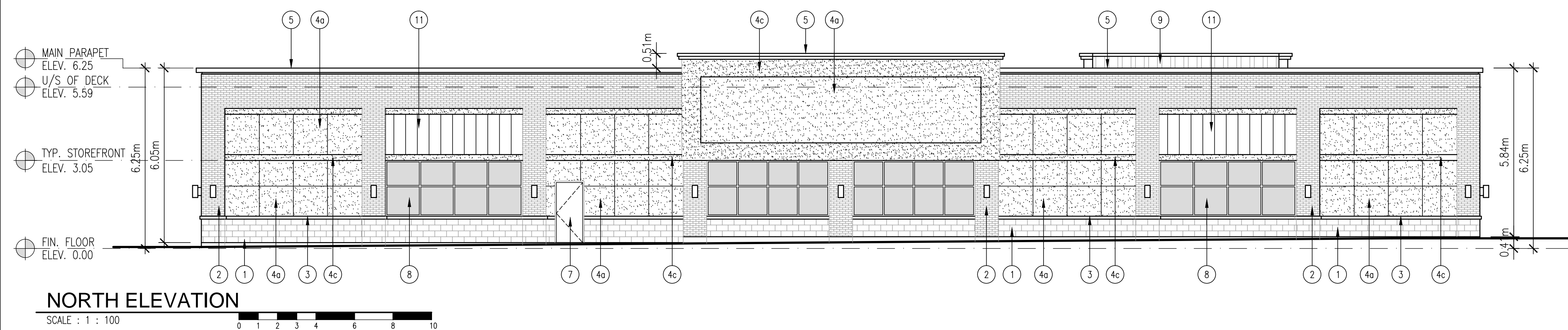
sheet no.:

A3.1e



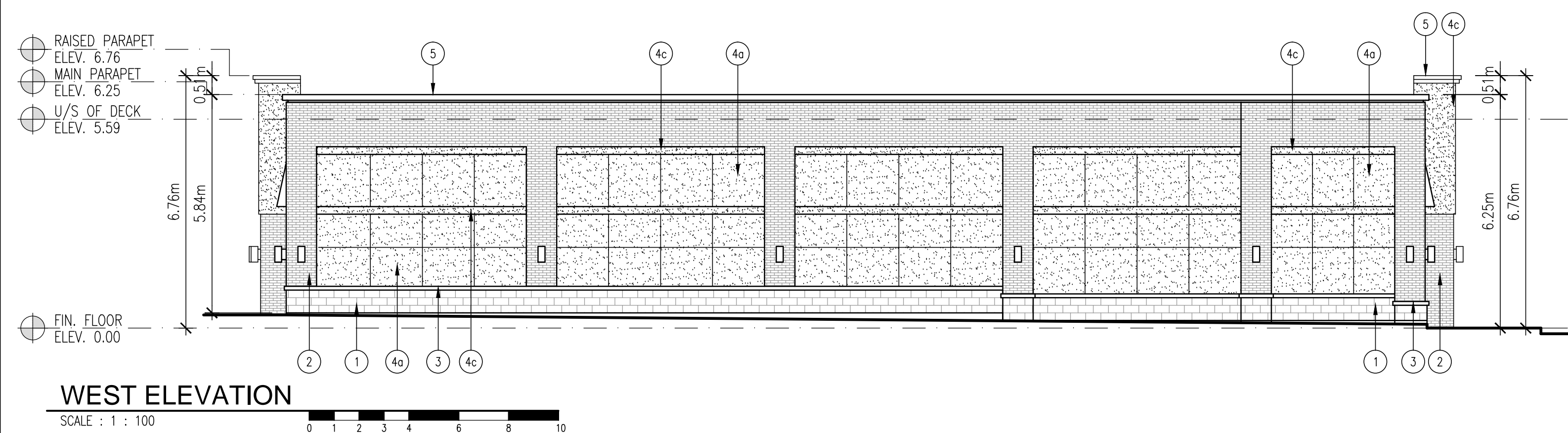
SOUTH ELEVATION

SCALE : 1 : 100



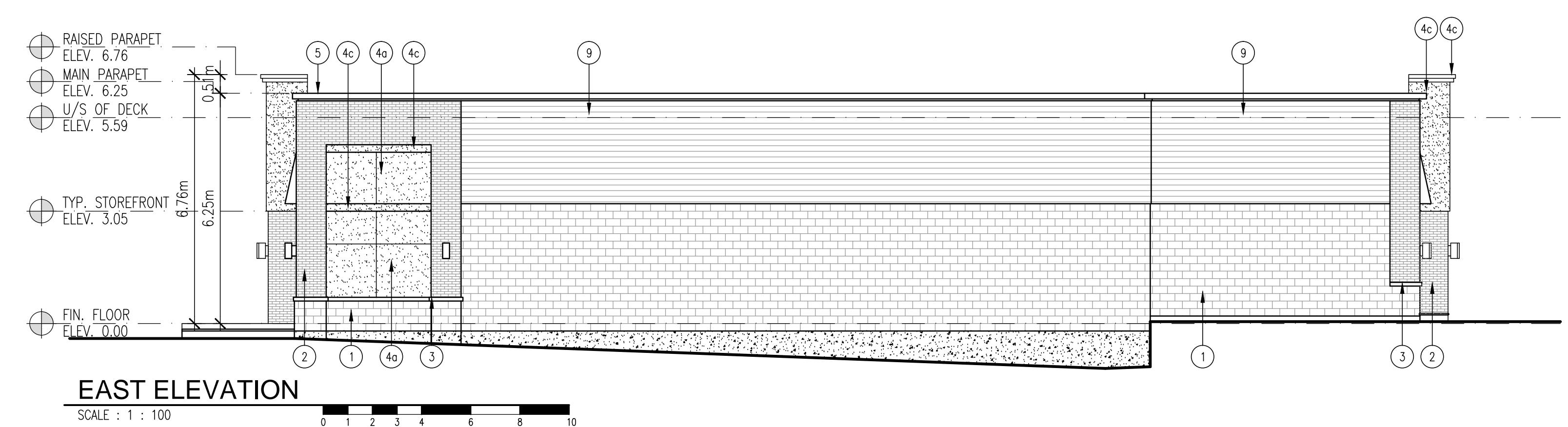
NORTH ELEVATION

SCALE : 1 : 100



WEST ELEVATION

SCALE : 1 : 100



EAST ELEVATION

SCALE : 1 : 100

EXTERIOR FINISH SCHEDULE	
ARCHITECTURAL BLOCK	
1	RICHVALE YORK - ARCHITECTURAL SPLIT FACE - COLOUR XXX - MORTAR: STANDARD GREY CONCAVE JOINT
BRICK VENEER	
2	BELDEN BRICK - XXXXX - MODULAR SIZE: 2-1/4" x 3-5/8" x 7-5/8" - MORTAR: STANDARD GREY CONCAVE JOINT
PRECAST SILL	
3	- 4" HIGH x MIN. 5-1/2" BED DEPTH x 42" LONG COMPLETE WITH TAPERED TOP FACE & DRIP EDGE - ROCK FACE EXPOSED FACE
E.I.F.S.	
4	- DRYVIT OUTSULATION MD SYSTEM (DS443) - POSITIVE MOISTURE DRAINAGE SYSTEM - COLOUR a XXXXXX - COLOUR b XXXXXX - COLOUR c XXXXXX
METAL CAP FLASHING	
5	- VICWEST - 26 ga. PRE-FIN. METAL - COLOUR a DARK BROWN CQ160621
DOOR & WINDOW FRAMES	
6	KAWNEER 1600 - ALUMINIUM SYSTEM - CLEAR ANODIZED FINISH - EXTERIOR GLASS - 6mm GREY TINT HEAT STRENGTHENED - INTERIOR GLASS - 6mm CLEAR HEAT STRENGTHENED WITH LOW E / ARGON GAS - PROVIDE SAMPLES FOR APPROVAL - MAX. U-FACTOR = 0.35 & SHGC = 0.40
H.M. DOORS & FRAMES	
7	- 1 3/4" THK. 14 ga. DOOR HOT PIPED ZINC COATED STEEL WITH 18 ga. STIFFENERS - FRAMES: 12 ga. WIDE COATED GALV. STEEL WITH WELDED STEEL CORNERS - PAINTING: ALL EXTERIOR METALS TO BE PAINTED WITH ALKYD ENAMEL, COLOUR TO MATCH DRYVIT #105 SUEDE.
SPANDREL GLASS PANELS	
8	- NON TINTED FIXED OPAQUE SPANDREL GLASS PANEL - INSULATED METAL BACK PAN COLOUR GREY WITH GREY BACK SCRM. - CLEAR ANODIZED ALUMINIUM FRAMING - GLAZING: INKAN NO. 0-125-1 (PROVIDE SAMPLE FOR APPROVAL)
HORIZONTAL METAL SIDING	
9	- PREFINISHED METAL FLASHING & SIDING: - STONE GREY - VICWEST: QC16071
VERTICAL METAL SIDING	
10	- PREFINISHED METAL FLASHING & SIDING: - CAMBRIDGE WHITE - STELCO: QC6895 - VICWEST: QC6161
FABRIC CANOPY	
11	- ON REINFORCED ALUMINIUM FRAME - COLOUR TO BE DETERMINED

A architectural
D design
A associates inc. architect

1880 assumption street, suite 100
windsor ontario canada n8y 1c4
ph 519.254.3430 fax 519.254.3642
email - info@ada-architect.ca www.ada-architect.ca



stamp:	date (mm/dd/yy):	issued for:
	02/11/14	SITE PLAN CONTROL SUBMISSION

general notes:

- THIS PRINT IS AN INSTRUMENT OF SERVICE ONLY AND IS THE PROPERTY OF THE ARCHITECT.
- DRAWINGS SHALL NOT BE SCALED.
- CONTRACTORS SHALL VERIFY AND BE RESPONSIBLE FOR ALL DIMENSIONS AND CONDITIONS ON THE JOB AND THIS OFFICE MUST BE NOTIFIED OF ANY VARIATIONS FROM THE DIMENSIONS AND CONDITIONS SHOWN BY THESE DRAWINGS.
- ATTENTION IS DIRECTED TO PROVISIONS IN THE GENERAL CONDITIONS REGARDING CONTRACTOR'S RESPONSIBILITIES IN REGARD TO SUBMISSION OF SHOP DRAWINGS.
- IN THE EVENT THE ARCHITECT IS RETAINED TO REVIEW SHOP DRAWINGS, SUCH REVIEW IS ONLY TO CHECK FOR CONFORMANCE WITH DESIGN CONCEPT AND WITH THE INFORMATION GIVEN IN THE CONTRACT DOCUMENTS.
- CONTRACTORS SHALL PROMPTLY NOTIFY THE ARCHITECT IN WRITING OF THE EXISTENCE OF ANY OBSERVED VARIATIONS BETWEEN THE CONTRACT DOCUMENTS AND ANY APPLICABLE CODES OR BY-LAWS.
- THE ARCHITECT IS NOT RESPONSIBLE FOR THE CONTRACTOR'S MEANS, METHODS AND/OR TECHNIQUES IN THE CONSTRUCTION OF THIS FACILITY.

project:
PROPOSED COMMERCIAL DEVELOPMENT
GREELY (SOUTH OTTAWA), ONT.

client:
OTIS GROUP OF COMPANIES

drawing title:
ELEVATIONS BUILDING CRU13

scale: AS SHOWN

drawn by: TC

checked by: SMB / TC

date: FEB. 2014

comm. no.: 2010-060

sheet no.: **A3.1f**