

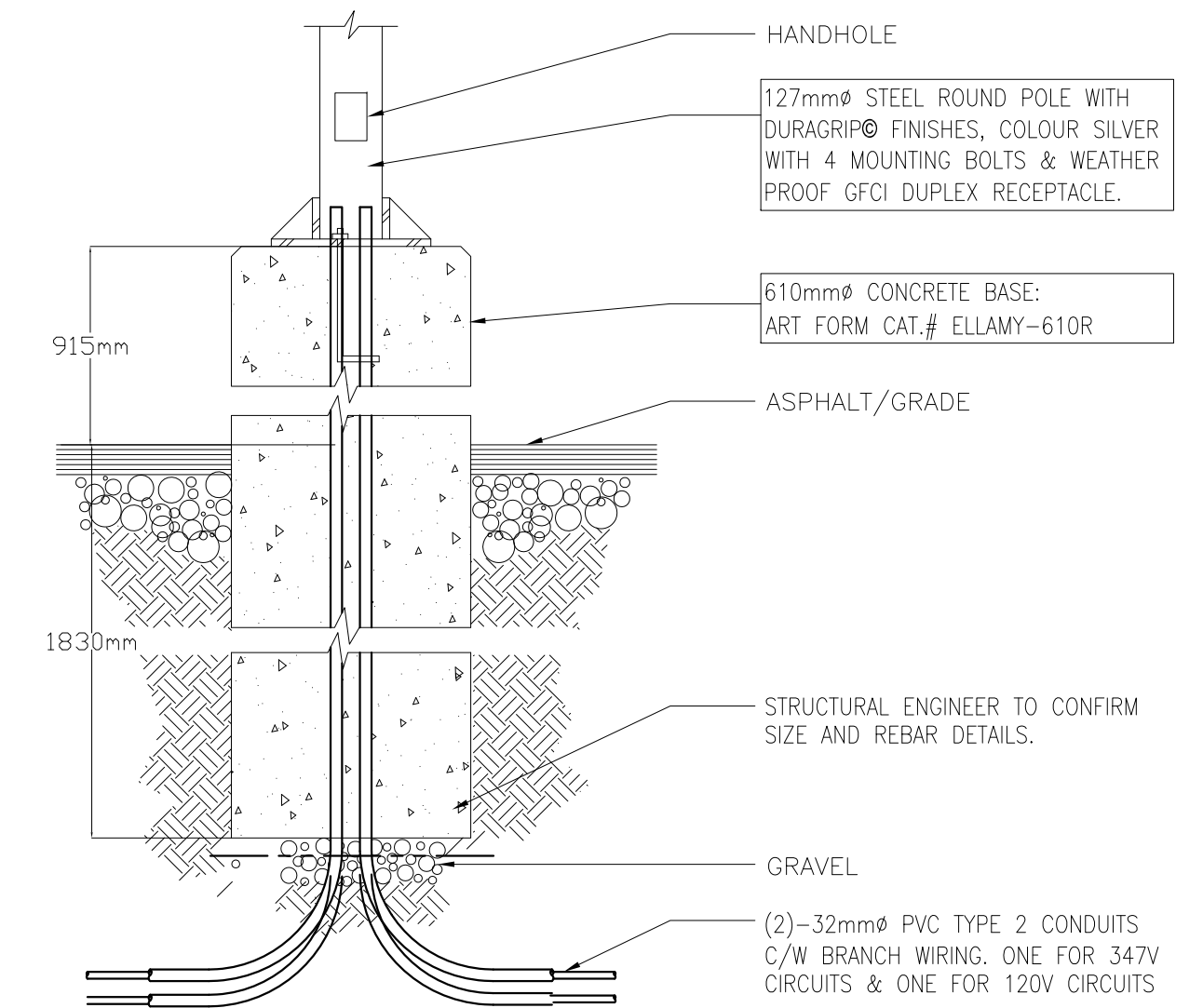
SITE LIGHTING LUMINAIRE SCHEDULE				
TYPE	LAMPS	INPUT WATT	DESCRIPTION	PICTURE
P1	120 LEDs	126W	TYPE: (SINGLE) 21" ARM MOUNTED, CURVILINEAR PICOEMITTER LED MANUFACTURER: KIM LIGHTING SUPPLIER: OMNILUMEN TECHNICAL PRODUCTS CONTACT: SEAN BOWKER - (647) 302-0685 CATALOG #: CC21x3E35-120LSK	
P2	120 LEDs	2x126W	TYPE: (BACK TO BACK) 21" ARM MOUNTED, CURVILINEAR PICOEMITTER LED MANUFACTURER: KIM LIGHTING SUPPLIER: OMNILUMEN TECHNICAL PRODUCTS CONTACT: SEAN BOWKER - (647) 302-0685 CATALOG #: 2 x CC21x3E35-120LSK	
P3	120 LEDs	126W	TYPE: (SINGLE) 21" ARM MOUNTED, CURVILINEAR PICOEMITTER LED MANUFACTURER: KIM LIGHTING SUPPLIER: OMNILUMEN TECHNICAL PRODUCTS CONTACT: SEAN BOWKER - (647) 302-0685 CATALOG #: CC21x4E35-120LSK	
P4	120 LEDs	126W	TYPE: (SINGLE) 21" ARM MOUNTED, CURVILINEAR PICOEMITTER LED MANUFACTURER: KIM LIGHTING SUPPLIER: OMNILUMEN TECHNICAL PRODUCTS CONTACT: SEAN BOWKER - (647) 302-0685 CATALOG #: CC21x3E35-120LSK-NFO	
W1	30 LEDs	71W	TYPE: (SINGLE) WALL MOUNTED, LED WALLPACK MANUFACTURER: HUBELL OUTDOOR LIGHTING SUPPLIER: OMNILUMEN TECHNICAL PRODUCTS CONTACT: SEAN BOWKER - (647) 302-0685 CATALOG #: LMC-30LU-5K-3	
W2	30 LEDs	71W	TYPE: (SINGLE) WALL MOUNTED, LED WALLPACK MANUFACTURER: HUBELL OUTDOOR LIGHTING SUPPLIER: OMNILUMEN TECHNICAL PRODUCTS CONTACT: SEAN BOWKER - (647) 302-0685 CATALOG #: LMC-30LU-5K-4	

NOTES: ALL FIXTURES ARE MOUNTED ON 20' POLE WITH 3" BASE, WITH TOTAL MOUNTING HEIGHT OF 23'.

CALCULATION SUMMARY							
LABEL	CALCULATION TYPE	UNITS	AVERAGE	MAXIMUM	MINIMUM	AVG/MIN	MAX/MIN
CRU12 DRIVE LANE	ILLUMINANCE	LUX	11.22	25.20	4.200	2.670	6.000
PROPERTY LINE	ILLUMINANCE	LUX	0.400	7.300	0.000	N.A.	N.A.
PARKING	ILLUMINANCE	LUX	16.23	33.00	3.300	4.920	16.09
PARKING 1	ILLUMINANCE	LUX	15.65	37.70	6.100	2.570	6.180
PARKING 2	ILLUMINANCE	LUX	15.43	25.50	6.100	2.530	4.180
BACK DRIVE LANE	ILLUMINANCE	LUX	9.180	37.30	0.200	45.90	186.5
ACCESS ROAD 1	ILLUMINANCE	LUX	13.46	32.20	5.900	2.280	5.460

**IMPORTANT NOTE:**

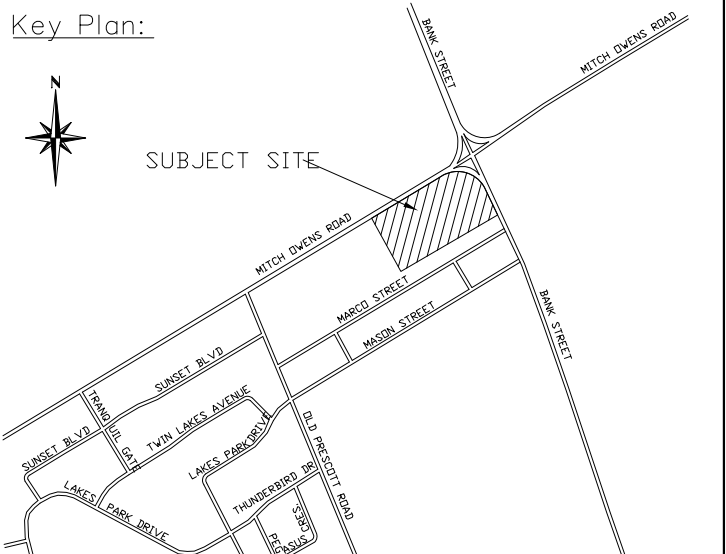
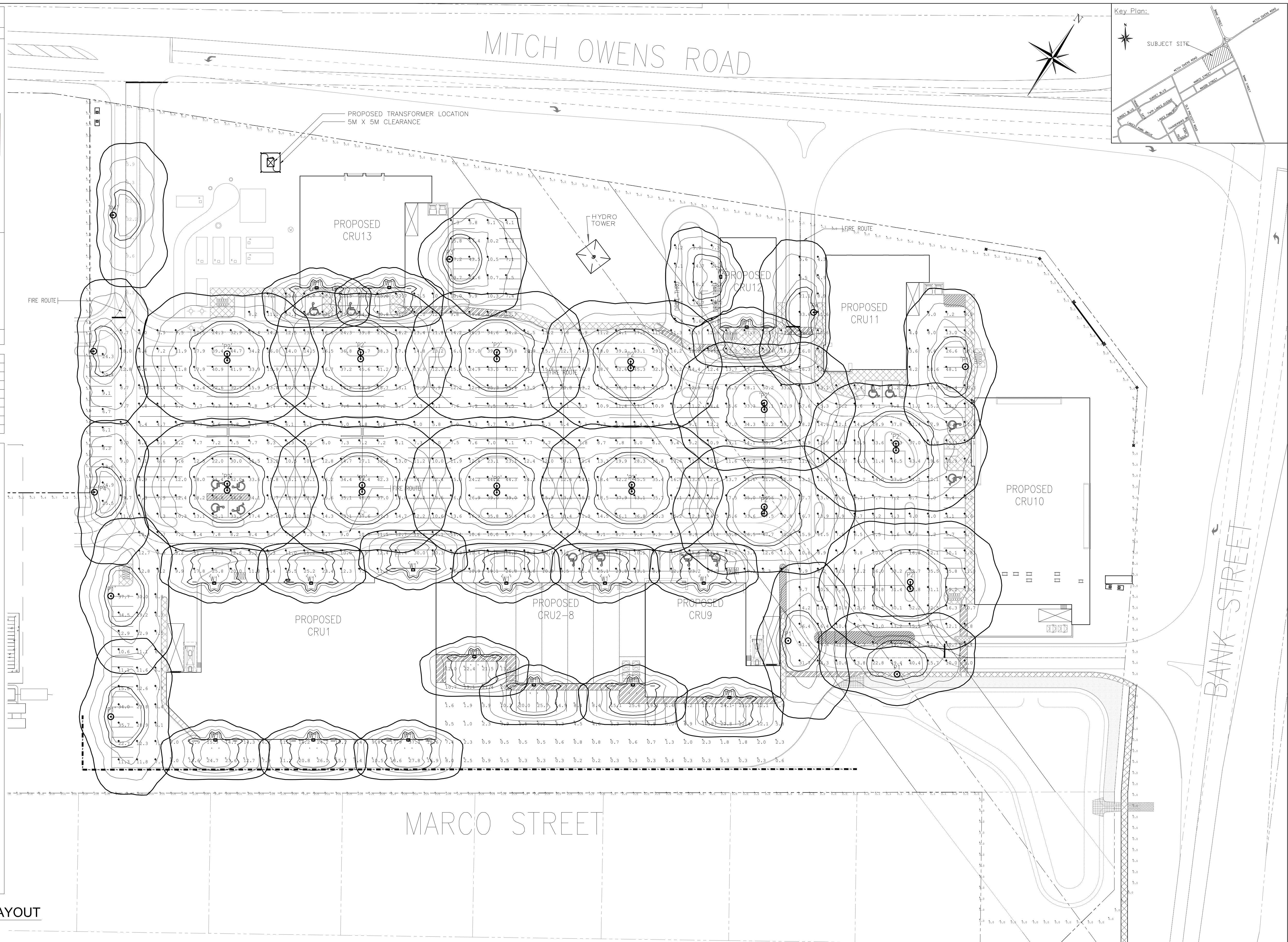
- ELECTRICAL CONTRACTOR SHALL EXERCISE EXTREME CAUTION IN EXCAVATING AND TRENCHING ON THIS SITE TO AVOID EXISTING CONDUITS, PIPING AND DUCTS, ETC. AND TO PREVENT HAZARD TO PERSONNEL AND DAMAGE TO EXISTING UNDERGROUND UTILITIES OR STRUCTURES. THE ENGINEER IS NOT RESPONSIBLE FOR THE LOCATION OF UNDERGROUND UTILITIES OR STRUCTURES WHETHER OR NOT SHOWN OR DETAILED AND INSTALLED BY THIS OR ANY OTHER CONTRACTS. THE CONTRACTOR SHALL IMMEDIATELY NOTIFY THE OWNER SHOULD SUCH UNIDENTIFIED CONDITIONS BE DISCOVERED. THESE DRAWINGS AND SPECIFICATIONS DO NOT INCLUDE NECESSARY COMPONENTS FOR CONSTRUCTION SAFETY.
- RE-BAR REQUIREMENT AND SIZING SHALL BE PROVIDED BY THE STRUCTURAL ENGINEER.
- THE LIGHT POLE'S CONCRETE BASE SHALL BE LOCATED AT MINIMUM OF 1000mm FROM THE EDGE OF THE PARKING CURB.





LIGHT POLE CONCRETE BASE SECTION  
N.T.S.

**PHOTOMETRIC ANALYSIS AND LIGHTING LAYOUT**

SCALE : 1 : 500  
0 2 4 6 8 10 12 14 16 18 20



consultant:  <b>Spline Group</b> Mechanical & Electrical Engineers #15 - 7015 Trammere Drive, Mississauga, Ontario L5S 1T7 905.497.8388   info@splinegroup.ca   www.splinegroup.ca	stamp:  A.S. BHOGAL 100079257 10/30/2015 PROVINCE OF ONTARIO	date (mm/dd/yy): issued for: 05/15/14 ISSUED FOR REVIEW & COMMENTS 05/20/14 ISSUED FOR REVIEW & COMMENTS 05/21/15 SITE PLAN CONTROL SUBMISSION 10/30/15 SITE PLAN CONTROL SUBMISSION	general notes: 1. THIS PRINT IS AN INSTRUMENT OF SERVICE ONLY AND IS THE PROPERTY OF THE ENGINEER. 2. DRAWINGS SHALL NOT BE SCALED. 3. CONTRACTORS SHALL VERIFY AND BE RESPONSIBLE FOR ALL DIMENSIONS AND CONDITIONS ON THE JOB AND THIS OFFICE MUST BE NOTIFIED OF ANY VARIATIONS FROM THE DIMENSIONS AND CONDITIONS SHOWN BY THESE DRAWINGS. 4. ATTENTION IS DIRECTED TO PROVISIONS IN THE GENERAL CONDITIONS REGARDING CONTRACTOR'S RESPONSIBILITIES IN REGARD TO SUBMISSION OF SHOP DRAWINGS. 5. IN THE EVENT THE ENGINEER IS RETAINED TO REVIEW SHOP DRAWINGS, SUCH REVIEW IS ONLY TO CHECK FOR CONFORMANCE WITH DESIGN CONCEPT AND WITH THE INFORMATION GIVEN IN THE CONTRACT DOCUMENTS. 6. CONTRACTORS SHALL PROMPTLY NOTIFY THE ENGINEER IN WRITING OF THE EXISTENCE OF ANY OBSERVED VARIATIONS BETWEEN THE CONTRACT DOCUMENTS AND ANY APPLICABLE CODES OR BY-LAWS. 7. THE ENGINEER IS NOT RESPONSIBLE FOR THE CONTRACTOR'S MEANS, METHODS AND OR TECHNIQUES IN THE CONSTRUCTION OF THIS FACILITY.	project: <b>COMMERCIAL DEVELOPMENT, MITCH OWENS RD. &amp; BANK ST., GREELY (OTTAWA), ONT.</b> client: <b>OTIS GROUP OF COMPANIES</b> drawing title: <b>ELECTRICAL SITE PLAN</b>	scale: <b>AS SHOWN</b> drawn by: <b>TD</b> checked by: <b>AB</b> date: <b>MAY 2014</b> comm. no.: <b>14-033</b>	sheet no.: <b>E0.01</b>
--	---	--	---	--	--	----------------------------