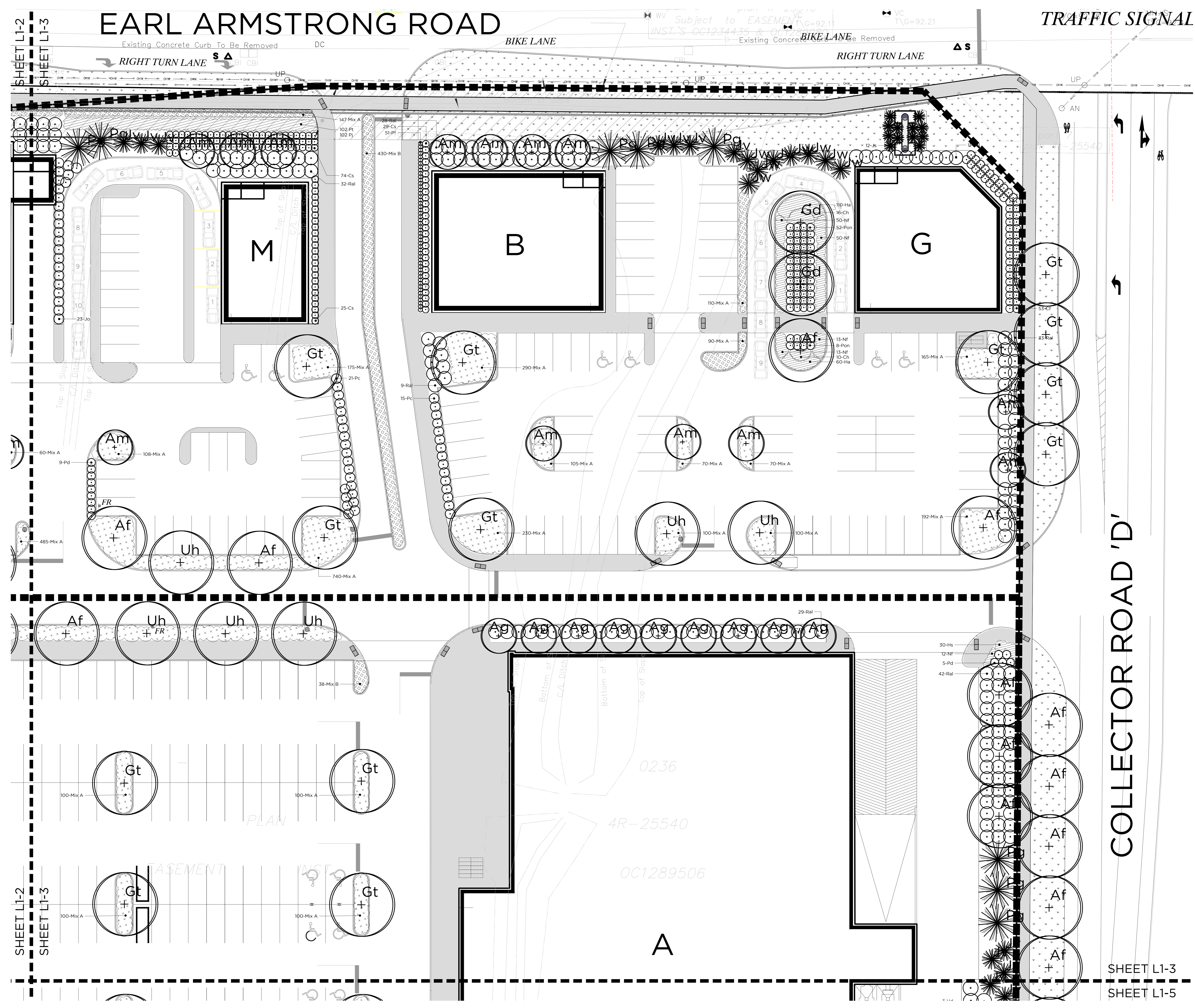


LEGEND

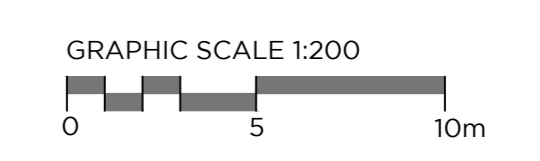
- CIP CONCRETE PAVING
- CIP CONCRETE PAVING COMMERCIAL PATIO
- CIP CONCRETE PAVING COMMERCIAL PATIO
- CIP CONCRETE PAVING COMMERCIAL PATIO
- LAWN
- PROPERTY LINE
- BIKE PARKING
- TACTILE WARNING STRIPS
- GRASS MIX A
- GRASS MIX B
- PERENNIALS
- SHRUB PLANTING
- NEW TREE PLANTING



- GENERAL NOTES:**
- The General Contractor shall verify all conditions in the field and report any discrepancies to the Landscape Architect prior to construction.
 - Any area outside the limit of work created by the General Contractor shall be restored by the General Contractor to the satisfaction of the contract administrator at no additional cost to the Owner.
 - All underground utilities to be located by the General Contractor prior to the commencement of any work.
 - This drawing is a portion of a complete project and shall be read in conjunction with all other drawings, specifications and tender documents related to the project, regardless of origin.
 - All measurements in millimeters unless otherwise noted.
 - Do not scale drawing.

SHEET L1-2
SHEET L1-3

SHEET L1-3
SHEET L1-5



7	SUBMITTED FOR SPA REVIEW	2016/07/16
6	SUBMITTED FOR SPA	2016/06/02
5	REVISED FOR REVIEW	2016/06/29
4	REVISED FOR REVIEW	2016/06/29
3	REVISED AS PER COMMENTS	2014/08/19
2	SUBMITTED FOR SPA	2014/04/08
1	FOR REVIEW	2014/03/10
NUMBER	MILESTONE / EVENT / SALLANT	DATE (MM/DD/YY)

FOTENN

REGISTERED PROFESSIONAL LANDSCAPE ARCHITECT
ONTARIO

PROJECT / LOCATION / PROJECT / ENDORSE
RIVERSIDE SOUTH SHOPPING CENTRE
1420 EARL ARMSTRONG ROAD
OTTAWA, ONTARIO

DRAWING / DESIGN
LANDSCAPE PLAN PART PLAN

DESIGNED BY / CONSULTANT: L.M./G.V./E.P.
DRAWN BY / DESIGNED BY: L.M./G.V./E.P.
CHECKED BY / VERIFIED BY: M.S.
SCALE: FOTENNA
L1-3