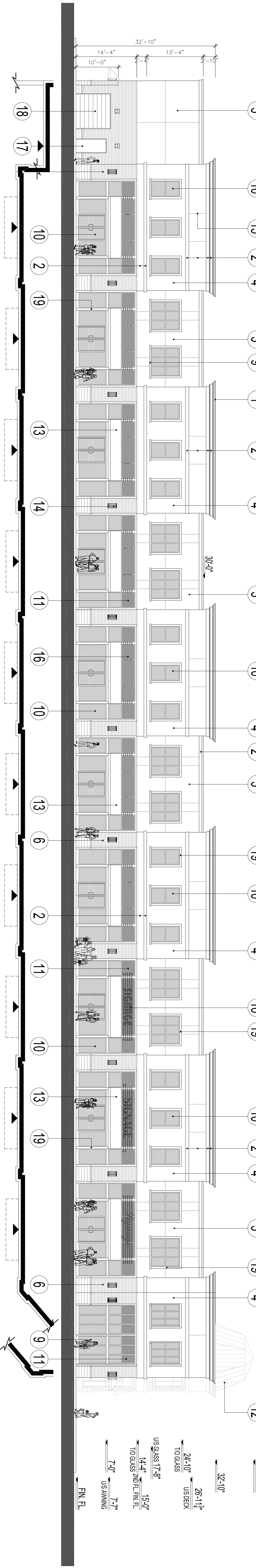
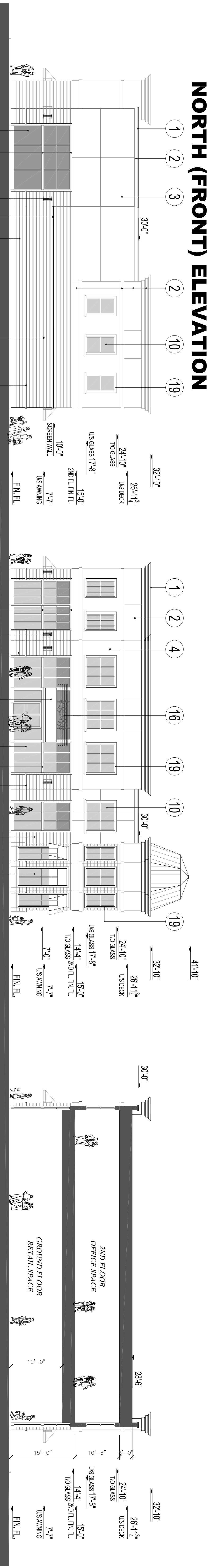


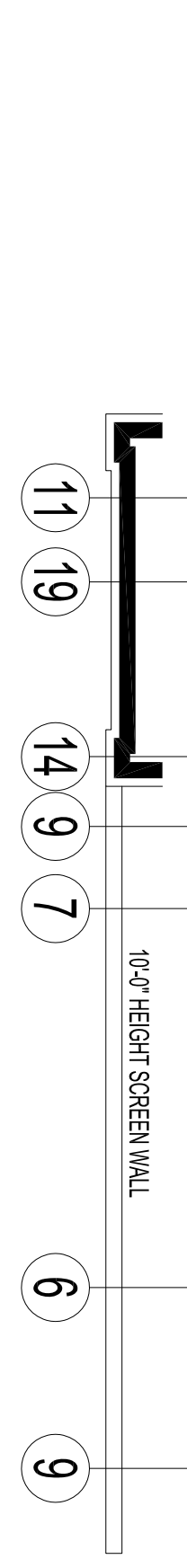
SOUTH (REAR) ELEVATION



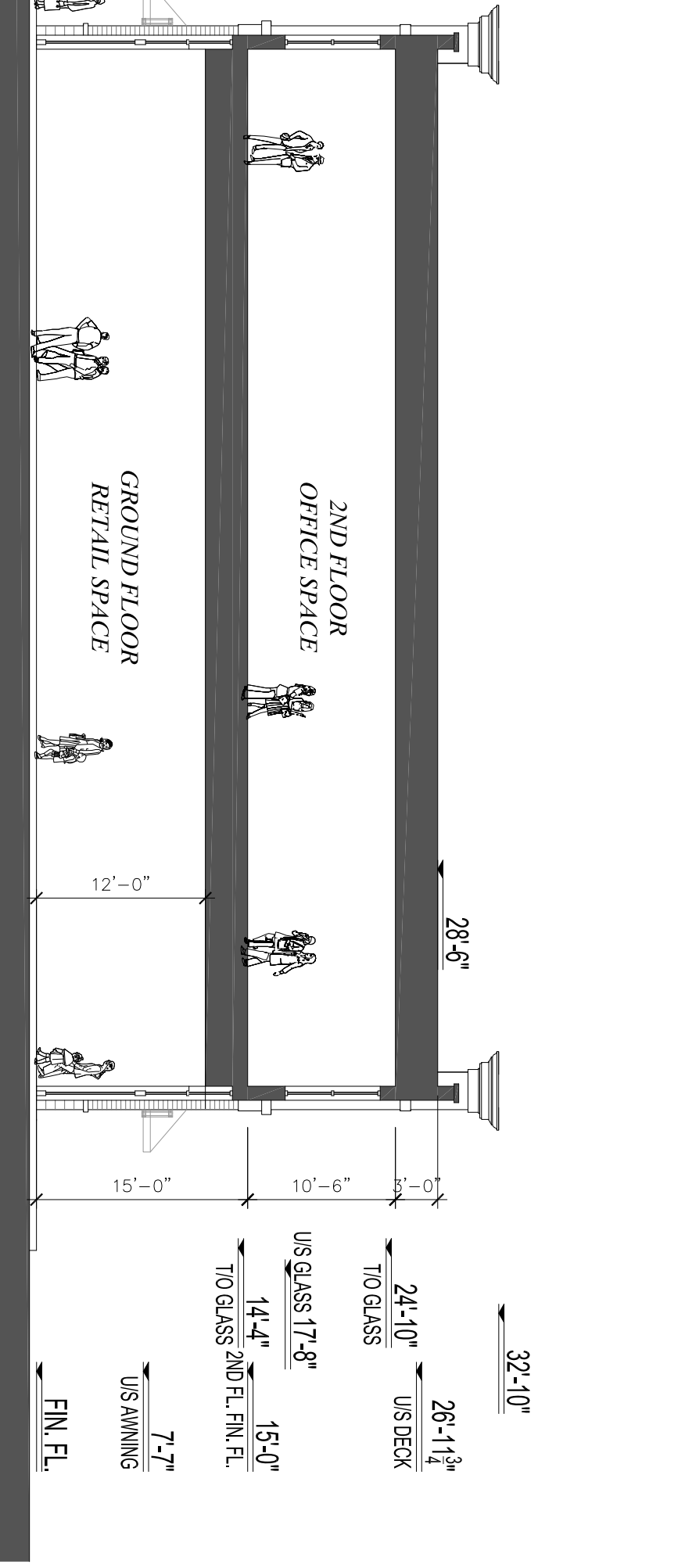
NORTH (FRONT) ELEVATION



WEST (SIDE) ELEVATION



EAST (SIDE) ELEVATION



TYPICAL SECTION

- EXTERIOR MATERIALS & FINISHES:**
- 1- PRE-FINISHED METAL FLASHING - VICWEST - DM-1002 - D-MAX WHITE
 - 2- E.I.F.S. - DRYVIT - SANDBLAST - #101 - SUPER WHITE
 - 3- E.I.F.S. - DRYVIT - SANDBLAST - #449 - BUCKSKIN
 - 4- E.I.F.S. - DRYVIT - SANDBLAST - ICI PAINT #A0573 CENTURY BROWN
 - 5- N/A
 - 6- FACE BRICK - HANSON BRICK - SONOMA MATTE
 - 7- ARCHITECTURAL BLOCK - SHOULDICE - TAPESTRY - ULTRA WHITE
 - 8- N/A
 - 9- ARCHITECTURAL SILLCAP - SHOULDICE - TAPESTRY - ULTRA WHITE
 - 10- GLAZING IN ALUMINUM FRAME - PREVOST - BRONZE ANOSPEC 546
 - 11- REFLECTIVE SPANDREL GLASS IN ALUMINUM FRAME - PREVOST - BRONZE ANOSPEC 546
 - 12- SLOPED METAL ROOF - COLOUR TO MATCH PREVOST - BRONZE ANOSPEC 546
 - 13- FABRIC AWNINGS - SUNBELLA SUNBR4618 - WALNUT BROWN TWEED
 - 14- DECORATIVE LIGHT FIXTURE
 - 15- REVEALS
 - 16- ILLUMINATED SIGNAGE
 - 17- HOLLOW METAL DOOR - COLOUR TO MATCH #19
 - 18- PRE-FINISHED OVERHEAD DOOR - COLOUR TO MATCH BRONZE ANOSPEC 546 NOTE: DOOR AND WINDOW LOCATIONS, DIMENSIONS, DETAILS AND BUILDING MATERIALS MAY VARY DEPENDING ON FINAL BUILDING LAYOUT, AND ARE SHOWN FOR INFORMATION PURPOSES ONLY.
 - 19- ALUMINUM FRAME - COLOUR TO MATCH BRONZE ANOSPEC 546