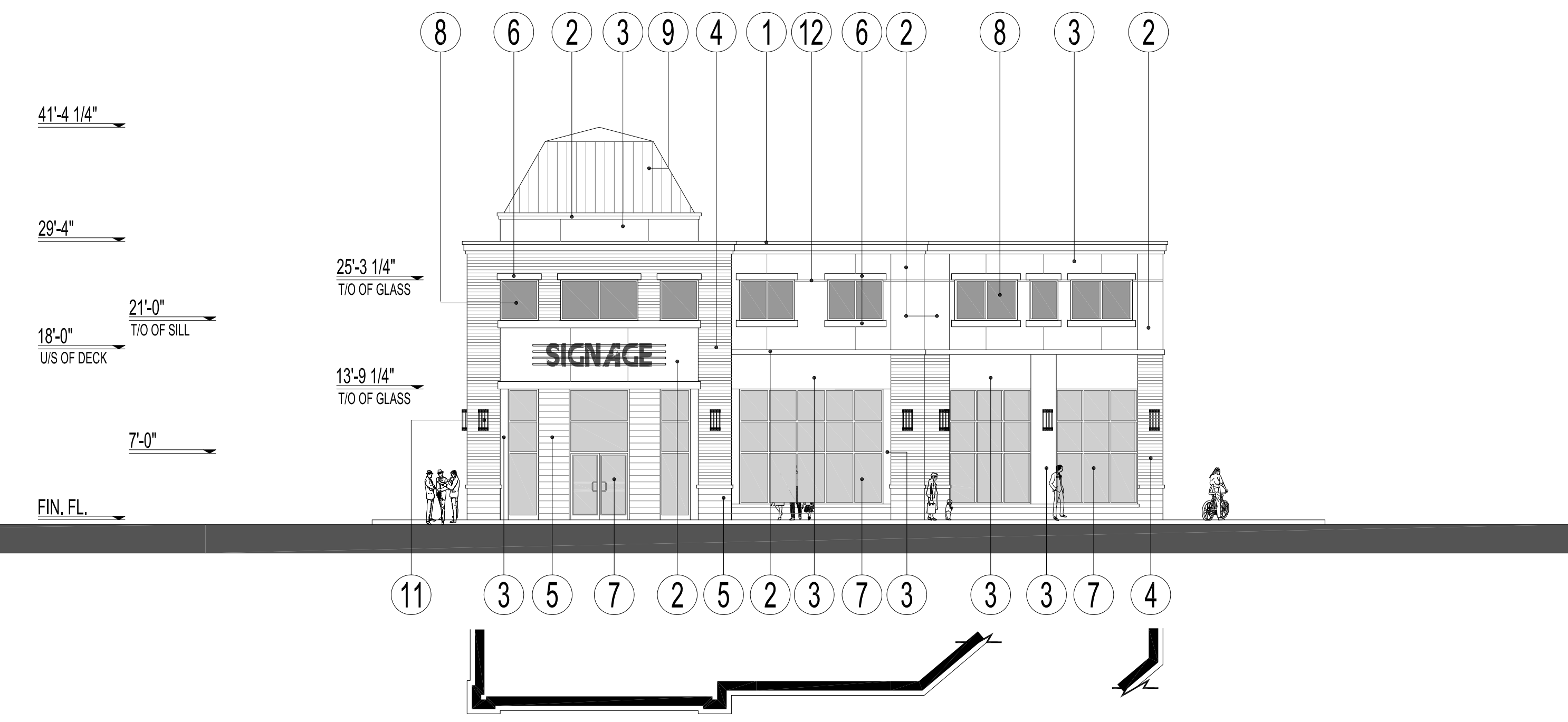
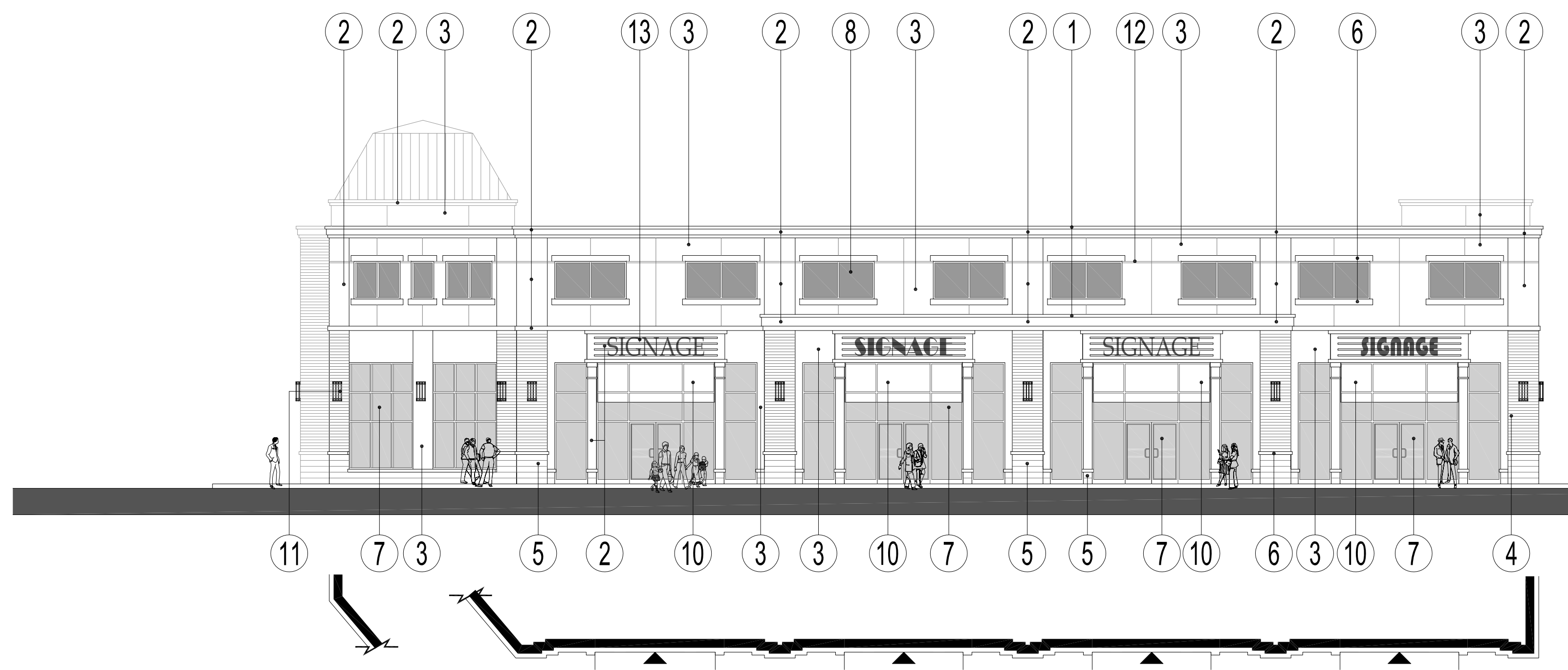


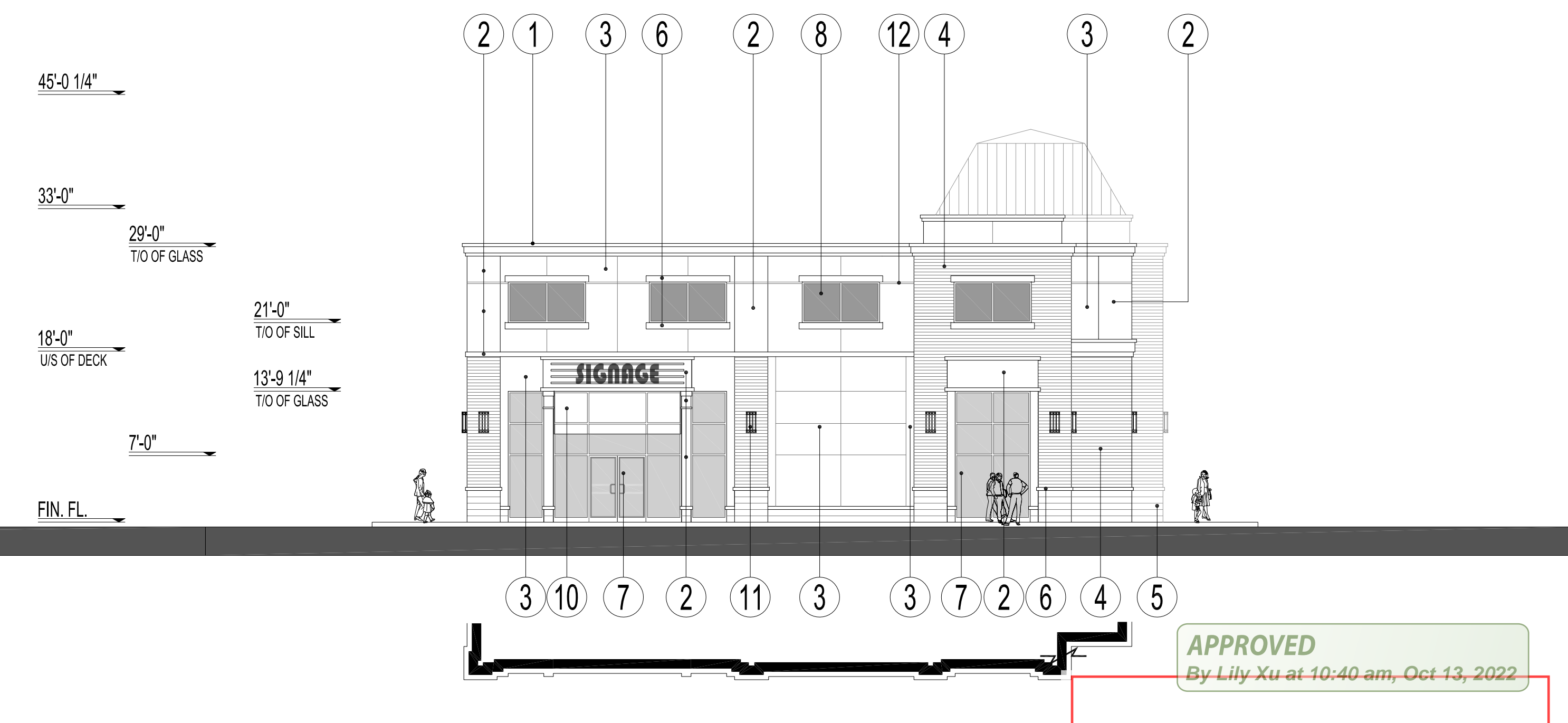
WEST (REAR) ELEVATION



SOUTH (SIDE) ELEVATION



EAST (FRONT) ELEVATION

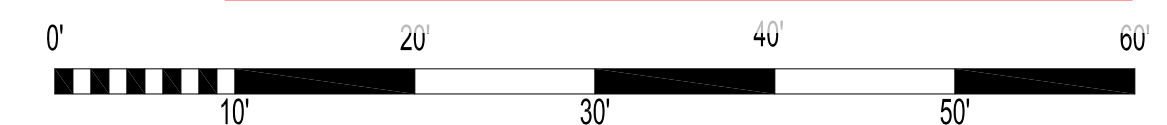


NORTH (SIDE) ELEVATION

APPROVED
By Lily Xu at 10:40 am, Oct 13, 2022

Lily Xu

LILY XU, MCIP, RPP
MANAGER, DEVELOPMENT REVIEW SOUTH
PLANNING, INFRASTRUCTURE & ECONOMIC
DEVELOPMENT DEPARTMENT, CITY OF OTTAWA



NOTE: DOOR AND WINDOW LOCATIONS, DIMENSIONS, DETAILS AND BUILDING MATERIALS MAY VARY DEPENDING ON FINAL BUILDING LAYOUT, AND ARE SHOWN FOR INFORMATION PURPOSES ONLY.

EXTERIOR MATERIALS & FINISHES:

- 1- PRE-FINISHED METAL FLASHING - VICWEST - DM-1002 - D-MAX WHITE
- 2- E.I.F.S. - DRYVIT - SANDBLAST - #101 - SUPER WHITE
- 3- E.I.F.S. - DRYVIT - SANDBLAST - #449 - BUCKSKIN
- 4- FACE BRICK - HANSON BRICK - TAUPE

- 5- ARCHITECTURAL BLOCK - SHOULDICE - TAPESTRY - ULTRA WHITE
- 6- ARCHITECTURAL SILL/CAP - SHOULDICE - TAPESTRY - ULTRA WHITE
- 7- GLAZING IN ALUMINUM FRAME - PREVOST : BRONZE ANOSPEC 546
- 8- SPANDREL GLASS IN ALUMINUM FRAME - PREVOST : BRONZE ANOSPEC 546
- 9- SLOPED METAL ROOF - COLOUR TO MATCH PREVOST : BRONZE ANOSPEC 546

- 10- FABRIC AWNINGS - SUNBRELLA SUNBR4618 - WALNUT BROWN TWEED
- 11- DECORATIVE LIGHT FIXTURE
- 12- LARGE REVEALS
- 13- ILLUMINATED SIGNAGE
- 14- HOLLOW METAL DOOR - COLOUR TO MATCH #19

- 15- PRE-FINISHED OVERHEAD DOOR - COLOUR TO MATCH BRONZE ANOSPEC 546
- 16- ALUMINUM FRAME - COLOUR TO MATCH BRONZE ANOSPEC 546

COMMERCIAL DEVELOPMENT - BUILDING 'I' - PROPOSED ELEVATIONS

LIMEBANK ROAD & EARL ARMSTRONG ROAD - OTTAWA, ONTARIO

DATE ISSUED : 16-09-23

PROJECT # : 11159

PETROFF PARTNERSHIP ARCHITECTS

PETROFF

Norguard

Real Estate Potential. Realized.