



October 2010



## FINAL REPORT ON

### Stage 2 Archaeological Assessment Phase 6 Riverside South Development Corporation Lot 21, Concession 2 Geographic Township of Gloucester Ottawa, Carleton County, Ontario

PIF Number: P302-068-2009

**Submitted to:**

Riverside South Development Corporation  
2193 Arch Street  
Ottawa, Ontario  
K1G 2H5

Attention: Ms. Mary Jarvis

REPORT

**Report Number:** 09-1126-0022 (2000)-6

**Distribution:**

- 10 Copies - Riverside South Development Corporation
- 3 copies - Ministry of Tourism and Culture
- 2 Copies - Golder Associates Ltd.





## Executive Summary

Golder Associates Ltd. (Golder) was retained by Riverside South Development Corporation (RSDC) to undertake a Stage 2 archaeological assessment of Riverside South, located on Part Lots 20-22, Broken Front Concession; Lots 21 and 22, Concession 1, Rideau Front; and Lots 17-21, Concession 2, Rideau Front, Geographic Township of Gloucester, City of Ottawa. The five RSDC development areas, or phases, were used to divide the study area into 5 Operations, numerically identified as 5, 6, 7, 8 and 9. This report deals with the Stage 2 archaeological assessment of Operation 6. This Operation is located on Part Lot 21, Concession 2, on the south side of Earl Armstrong Road, east of Limebank Road.

*The Executive Summary highlights key points from the report only; for complete information and findings, as well as the limitations, the reader should examine the complete report.*

Operation 6 was sub-divided into 7 sections identified as following the pre-existing divisions of the area based on the ploughed fields. Operation 6 was field walked on November 10 and 11, 2009. One unploughed Operation, 6G, was test pitted on November 30<sup>th</sup>.

No pre-contact artifacts were located in Operation 6. Two historic sites were located, the Larkin Site (BhFv-17) and the Larkin 2 Site. The Larkin Site will require further archaeological assessment, while the Larkin 2 site was not determined to be of cultural heritage value or interest.

This report is submitted to the Ministry of Tourism and Culture as a condition of licensing in accordance with Part VI of the Ontario Heritage Act, R.S.O. 1990, c 0.18. The report is reviewed to ensure that the licensed consultant archaeologist has met the terms and conditions of their archaeological licence, and that the archaeological field work and report recommendations ensure the conservation, protection and preservation of the cultural heritage of Ontario.

This investigation has provided the basis for the following recommendations:

- 1) That a Stage 3 archaeological investigation of the Larkin site (BhFv-17) be conducted prior to any disturbance of section 6C, and sections 6A, 6B, 6D, 6E, 6F and 6G require no further archaeological assessments (Figure 3). Archaeological sites recommended for further archaeological fieldwork or protection remain subject to Section 48 (1) of the Ontario Heritage Act, and may not be altered, or have artifacts removed, except by a person holding an archaeological license;
- 2) That should deeply buried archaeological remains be encountered on this property, the Ministry of Tourism and Culture, (416) 314-7148, be notified immediately;
- 3) That in the event that human remains be encountered during construction, the proponent should immediately contact both the Ministry of Tourism and Culture, (416) 314-7148, and the registrar or Deputy Registrar of the Cemeteries Unit of the Small Business and Consumer Services, (416) 326-8393, be notified immediately; and,
- 4) That artifacts collected as a part of this investigation will remain with the licences at Golder Associates Ltd. until an appropriate repository can be identified.



## Acknowledgements

This assessment benefited from the contribution of a number of individuals.

Project Manager	Hugh J. Daechsel
Project Leader	Brandy Lockhart
Field Crew	Brandy Lockhart, Dan Goss, Nicole Brandon, Kara Lockhart, Francis Scardera, Will Nalley, Shane McCartney, Keirsten Green, Chris Gervais, Alex McKinstry
Drafting	Brandy Lockhart, Jamie McKenzie
Administrative Support	Candice Butler
Senior Technical Advisor	Hugh Daechsel
Senior reviewer	Hugh Daechsel
Client Contact	Mary Jarvis, Riverside South Development Corporation



## Table of Contents

<b>EXECUTIVE SUMMARY</b> .....	<b>i</b>
<b>1.0 INTRODUCTION</b> .....	<b>1</b>
<b>2.0 OBJECTIVES</b> .....	<b>2</b>
<b>3.0 BACKGROUND AND HISTORY OF THE STUDY AREA</b> .....	<b>6</b>
<b>4.0 METHODOLOGY AND RESULTS</b> .....	<b>12</b>
4.1 Methodology .....	12
4.2 Results.....	14
4.2.1 Section 6A.....	15
4.2.2 Section 6B.....	15
4.2.3 Section 6C .....	17
4.2.4 Section 6D .....	21
4.2.5 Section 6E.....	23
4.2.6 Section 6F.....	23
4.2.7 Section 6G .....	24
<b>5.0 INTERPRETATION</b> .....	<b>28</b>
<b>6.0 SUMMARY AND RECOMMENDATIONS</b> .....	<b>30</b>
<b>7.0 LIMITATIONS OF THIS REPORT</b> .....	<b>32</b>
<b>CLOSURE</b> .....	<b>33</b>
<b>REFERENCES</b> .....	<b>34</b>
<b>PLATES</b>	
Plate 1: The Larkin Site (BhFv-17), looking northwest from the centre of section 6C. ....	7
Plate 2: Wet conditions in section 6D, looking south from the north end of section 6D. ....	12
Plate 3: Small bridge built with left over materials, crossing between sections 6G and 6D, looking north from the boundary of 6G and 6D. ....	13
Plate 4: Test pitting, looking southwest from the centre of section 6G. ....	14
Plate 5: Artifact #041, a porcelain cup or creamer from section 6A.....	15
Plate 6: Field walking in section 6B, looking north from the southern edge of this section.....	16
Plate 7: Artifacts located in section 6B. 1) vitrified white earthenware rim fragment; 2) ironstone rim fragment and 3) white earthenware fragment with green transfer print. ....	16



**STAGE 2 ARCHAEOLOGICAL ASSESSMENT  
PHASE 6, RIVERSIDE SOUTH DEVELOPMENT CORPORATION**

Plate 8: Selection of artifacts with makers marks from the Larkin Site in section 6C. 1) Alfred Meaken vitrified white earthenware; 2) St. John’s ironstone; 3 and 5) St. John’s ironstone; 4) vitrified white earthenware with an unknown marking. .... 17

Plate 9: Selection of artifacts from the Larkin Site in section 6C, 1) dark blue transfer print; 2) refined white earthenware with an aqua makers mark; 3) vitrified white earthenware cup/mug with a decal; 4) refined white earthenware with pink transfer print; 5) vitrified white earthenware plate with blue willow transfer print and a ‘MADE IN ENGLAND’ makers mark; 6) refined white hollow earthenware with green transfer print; 7) refined white earthenware plate with aqua transfer print. .... 18

Plate 10: Selection of glass artifacts section 6C showing the variety of glass located at the Larkin Site. 1) white (milk glass) cylindrical hollowware with embossed lettering reading “MENTHO...REC....TRADE...”; 2) plain amber cylindrical hollowware fragment; 3) hollowware blue body fragment, jar liner; 4) dark green hollowware fragment; 5) jar liner; 6) light purple manganese pressed glass hollowware; 7) plain green cylindrical hollowware; 8) light aqua hollowware cylinder with embossed lettering “DE...”; 9) layered pink/white hollowware body fragment. .... 19

Plate 11: A selection of metal artifacts from the Larkin Site in section 6C. 1) oval iron ring; 2) indeterminate copper alloy artifact, possibly part of a pocket knife?; 3) iron ring; 4) iron cotter pin. .... 20

Plate 12: A selection of artifacts located in the small artifact cluster in section 6D. 1) ironstone cup fragment; 2) wine bottle fragment; 3) coarse yellow stone hollow ware; 4) blue transfer print refined white earthenware; 5) black stamped refined white earthenware. .... 22

Plate 13: A selection of metal artifacts located in section 6F, 1) artifact #161, possible iron farm equipment; 2) artifact #162, possible iron file fragment and 3) artifact #160 a cut nail. .... 23

Plate 14: Section 6G showing the piles of timber located on either side of the gravel driveway, looking north towards Earl Armstrong Road from the north centre of the section. .... 24

Plate 14: An old boiler or oil tank being re-used as a culvert in the bridge between sections 6D and 6G, looking northwest. .... 25

Plate 15: Staircase stringer being re-used in the small bridge running between sections 6G and 6D, looking northwest. .... 25

Plate 16: Two indeterminate metal artifacts located in section 6G. .... 26

Plate 17: Test pit in section 6G showing grey clay soil and concrete at the bottom of the test pit. .... 27

**TABLES**

Table 1: Outline of Historic Property Ownership (nineteenth century)..... 7

Table 2: Summary of section survey strategies and coverage area..... 14

Table 3: Date ranges for the some of the artifacts collected at the Larkin Site..... 21

Table 4: Date ranges for the some of the artifacts collected at the section 6D cluster (does not include artifacts outside of the cluster)..... 22

**FIGURES**

Figure 1: Key Plan..... 3

Figure 2: Urbandale Site Plan Showing All Operations ..... 4

Figure 3: Operation 6 with Section 6A to 6G ..... 5

Figure 4: 1863 Walling Map ..... 8



---

**STAGE 2 ARCHAEOLOGICAL ASSESSMENT  
PHASE 6, RIVERSIDE SOUTH DEVELOPMENT CORPORATION**

---

Figure 5: 1879 Belden Map ..... 9

Figure 6: 1906 Topographical Map ..... 10

Figure 7: 1956 Air Photograph with Operation 6 Outline ..... 11

Figure 8: 1936 Air Photograph with Operation 6 Outline ..... 29

Figure 9: Operation 6 Archaeological Recommendations ..... 31

**APPENDICES**

**APPENDIX A**

Photographic Catalogue

**APPENDIX B**

Artifact Inventory



## **1.0 INTRODUCTION**

Golder Associates Ltd. (Golder) was contracted by Riverside South Development Corporation (RSDC) to provide a Stage 2 archaeological assessment of areas to be affected by the proposed subdivisions surrounding River, Earl Armstrong and Limebank Roads, in the Geographic Township of Gloucester, City of Ottawa, Ontario (Figures 1 and 2). The study encompasses five areas that RSDC is proposing for development. These include four locations south of Earl Armstrong Road and one area to the north.

The five RSDC development areas, or phases, were used to divide the study area into 5 Operations, identified as 5, 6, 7, 8 and 9. This report deals with the Stage 2 archaeological assessment of Operation 6. This Operation is located on the south side of Earl Armstrong Road, east of Limebank Road.

Operation 6 was sub-divided into 7 sections following the pre-existing divisions of the area based on the ploughed fields and an unnamed tributary of Mosquito Creek which runs through the west side of the Operation. Operation 6 was field walked on November 10 and 11, 2009. The weather on November 10<sup>th</sup> was sunny and exceptionally warm ranging from 2 to 17 degrees Celsius while the temperature on the 11<sup>th</sup> was also sunny, but cooler at a range of approximately -2 degrees Celsius to 12 degrees. One unploughed section, 6G, was test pitted on November 30<sup>th</sup>. The weather on the 30<sup>th</sup> was cool at -1 to 3 degrees Celsius with a snow fall in the morning.

This report is divided into three sections beginning with an overview of the methodology followed during the Stage 2 assessment and the results obtained from the field work. The second section is the interpretation of the results and the third section includes a brief summary and recommendations as to whether additional work is required. A list of cited references is provided at the end of the report and the photographic catalogue and artifact inventory are located in Appendix A and B.



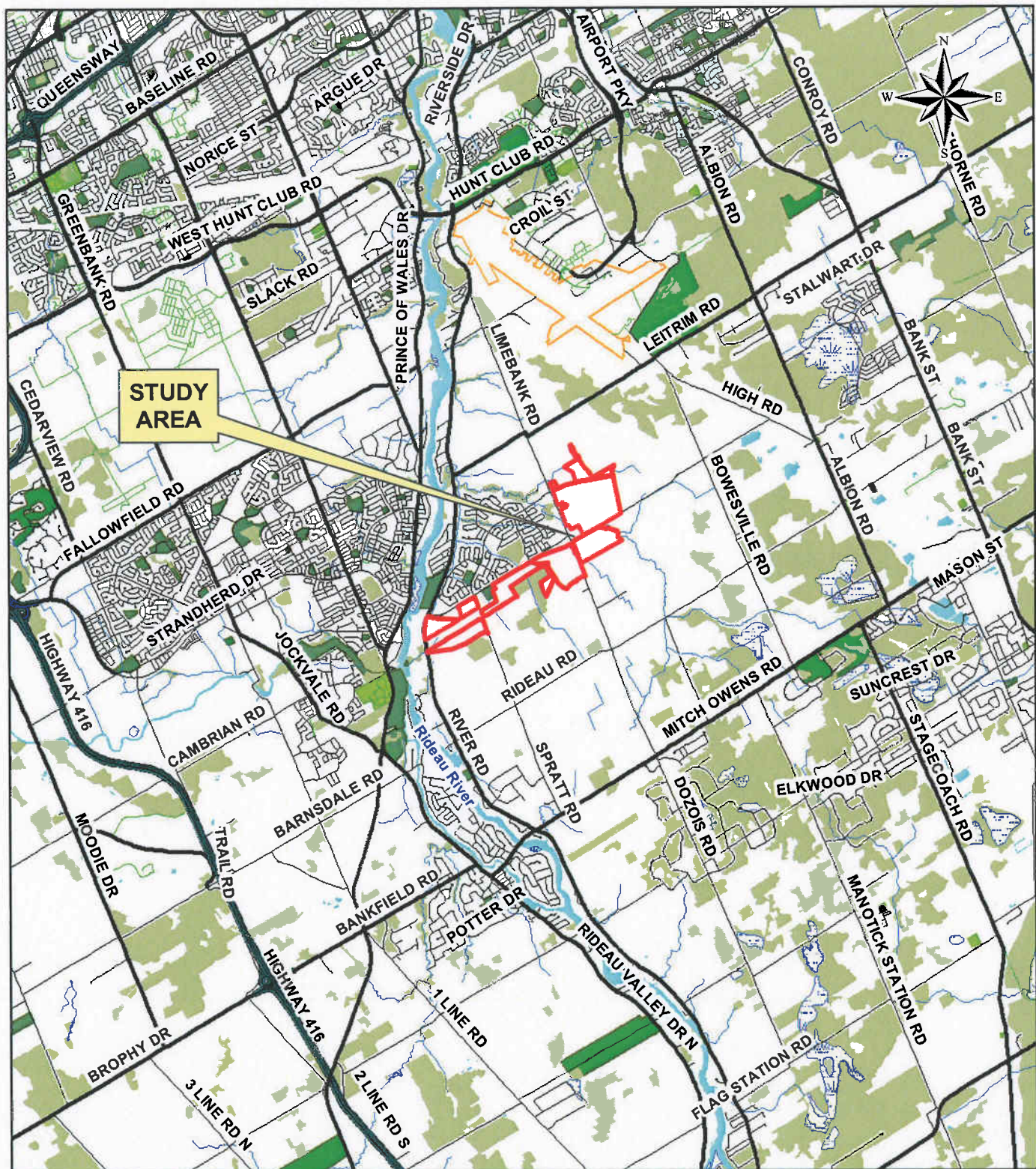
## **2.0 OBJECTIVES**

The Stage 2 archaeological assessment was completed to identify archaeological and heritage resources on or in the vicinity of the study area that may be affected by the proposed subdivisions. The objectives of a Stage 2 investigation follow the principles outlined in the Ontario Heritage Act (consolidated 2007), *the Draft Standards and Guidelines for Consulting Archaeologists* (2009) and the *Archaeological Assessment Technical Guidelines* (1993). More specifically, studies were completed with the following objectives:

- To document archaeological resources on the property;
- To determine whether the property contains archaeological resources requiring further assessment; and,
- To recommend appropriate Stage 3 assessment strategies for archaeological sites identified (MOE 2009, p.9).



Path: N:\Active\2009\1126 - Environmental & Cultural Sciences\09-1126-0022 - Urban\Stage 2 Archaeology\GIS\mxd\0911260022-2000-OPERATION\06-01.mxd

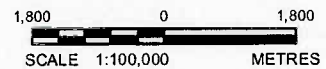


**NOTE**

This figure is to be read in conjunction with the accompanying Golder Associates Ltd. Report No. 09-1126-0022

**REFERENCE**

Digital base map data supplied by DMTI Spatial Inc. CANMAP, 2007  
 Projection: Transverse Mercator Datum: NAD 83 Coordinate System: MTM Zone 9



DATE	June 2009
DESIGN	EW
GIS	JEM
CHECK	HJD
REVIEW	HJD

TITLE

**KEY PLAN**

PROJECT

STAGE 2 ARCHAEOLOGICAL ASSESSMENT  
 EARL ARMSTRONG SUBDIVISION, OTTAWA, ON

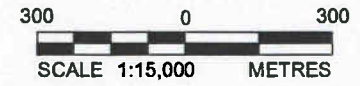
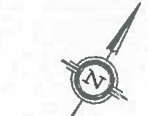
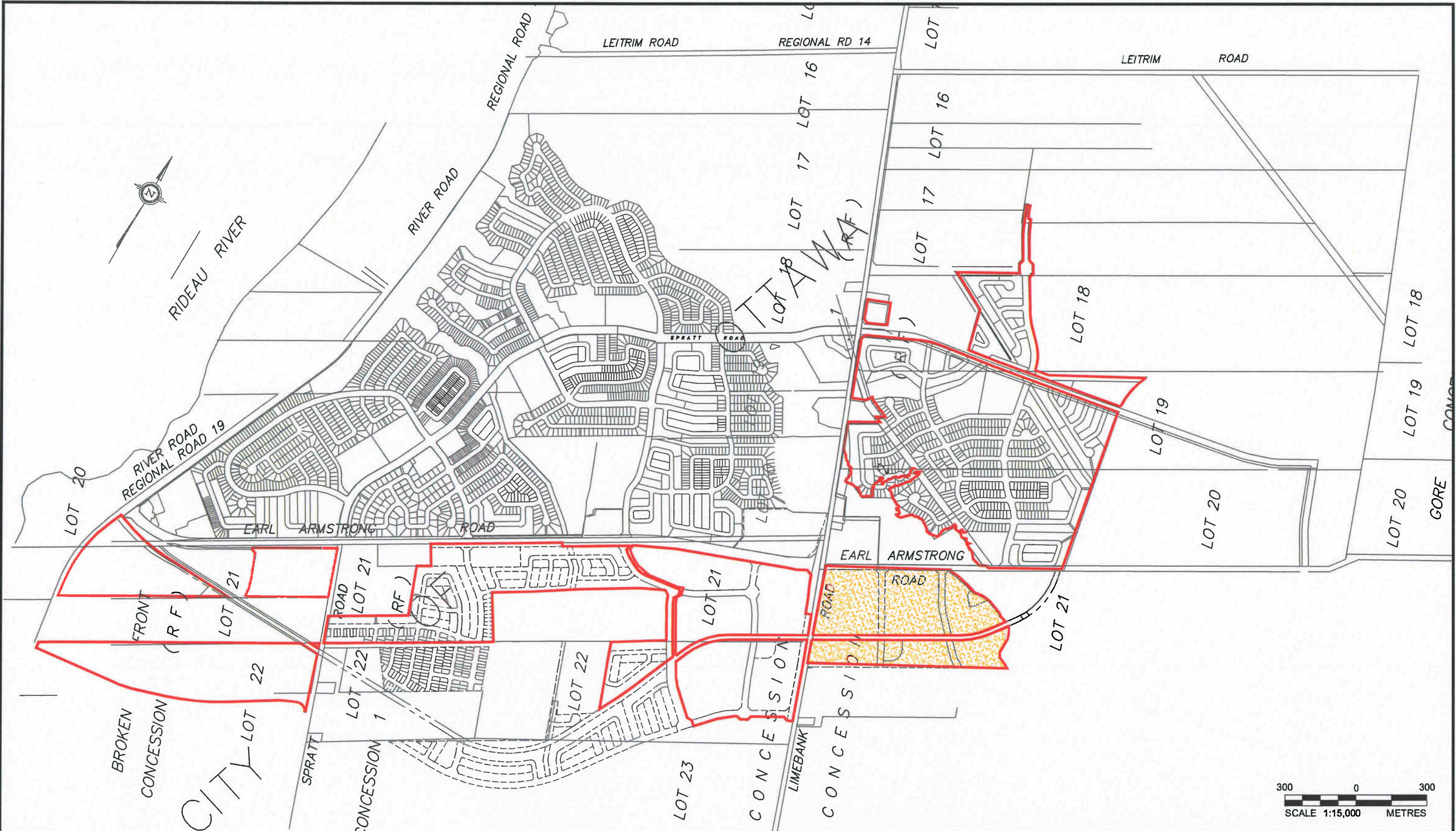
**FIGURE 1**

PROJECT No. 09-1126-0022



SCALE AS SHOWN

REV. 0

FILENAME: N:\Active\2009\1126 - Environmental & Cultural Sciences\09-1126-0022 Urbondale Corporation\Stage 1 -2 Archaeology\Ottawa, ON\Stage 2 0911260022-02.dwg



**LEGEND**

	SITE BOUNDARY
	SUB-OPERATION 6

**REFERENCE**  
 BASE PLAN SUPPLIED IN DIGITAL FORMAT BY ANNIS, O'SULLIVAN, VOLLEBEKK LTD.

**NOTE**  
 THIS FIGURE IS TO BE READ IN CONJUNCTION WITH THE ACCOMPANYING GOLDER ASSOCIATES LTD. REPORT No. 09-1126-0022

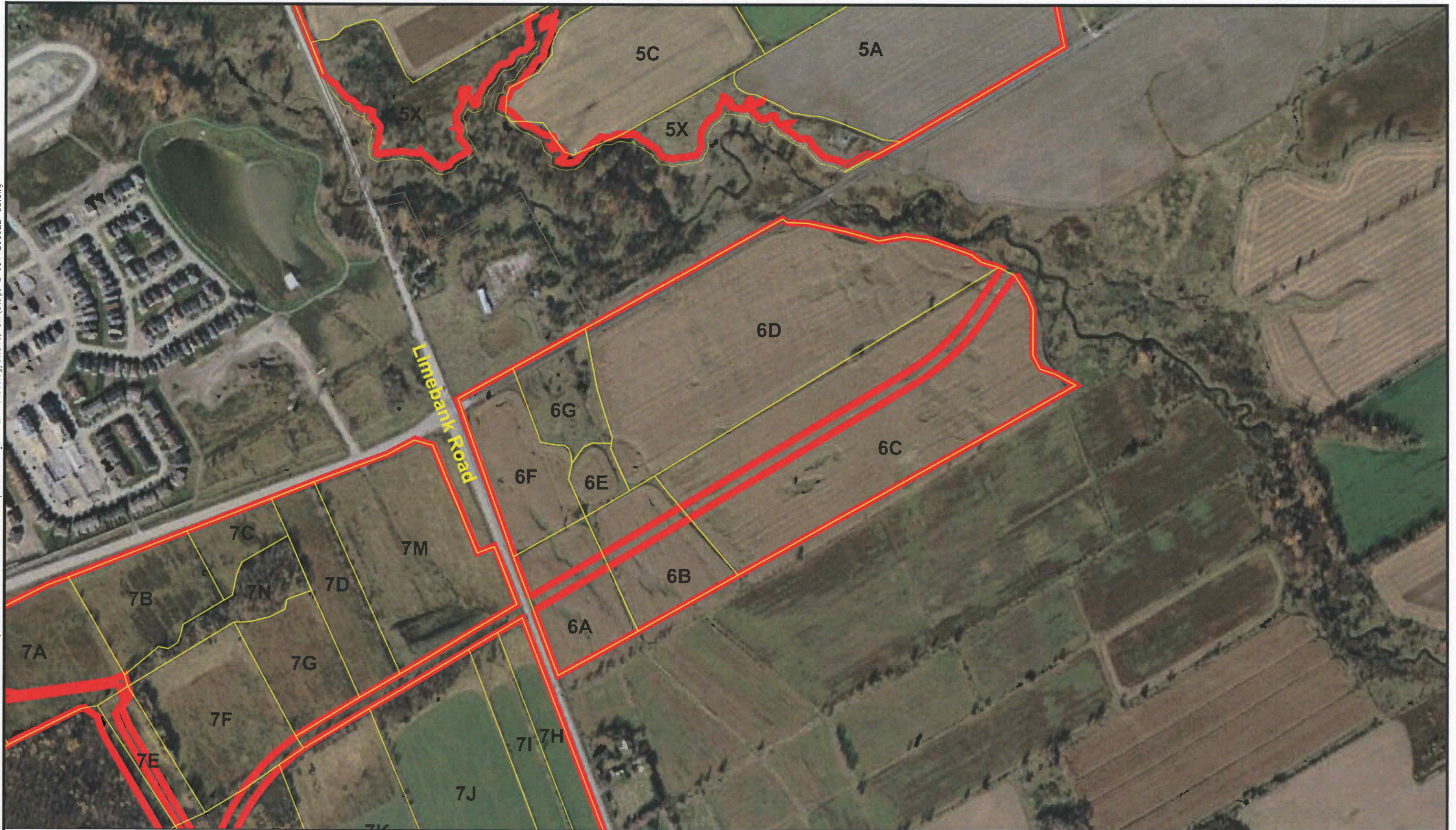


FILE No. 0911260022-02.dwg  
 PROJECT No. 09-1126-0022 REV.

SCALE	1:15,000
DATE	Mar. 2010
DESIGN	E.W.
CADD	J.E.M.
CHECK	8/23/2010 H.J.P
REVIEW	8/23/2010 H.J.P

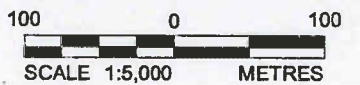
TITLE	<b>RIVERSIDE SOUTH SITE PLAN SHOWING ALL OPERATIONS</b>
STAGE 2 ARCHAEOLOGICAL ASSESSMENT EARL ARMSTRONG SUBDIVISION, OTTAWA, ON	
FIGURE	<b>2</b>

FILENAME: N:\Active\2009\1126 - Environmental & Cultural Sciences\09-1126-0022 - Urbandale Corporation\Stage 1 - 2 Archaeology\Ottawa, ON\Stage 2 0911260022-03.dwg



**LEGEND**

	STUDY AREA BOUNDARY
	SUB-OPERATION BOUNDARY



**REFERENCE**  
 BASE IMAGE PROVIDED BY GOOLGE EARTH PRO, 2009.

**NOTE**  
 THIS FIGURE IS TO BE READ IN CONJUNCTION WITH THE ACCOMPANYING GOLDER ASSOCIATES LTD. REPORT No. 09-1126-0022



FILE No. 0911260022-03.dwg  
 PROJECT No. 09-1126-0022

SCALE	1:5,000
DATE	Mar. 2010
DESIGN	B.L.
CADD	B.L.

CHECK 2010 H.J.D.  
 REVIEW 2010 H.J.D.

<b>OPERATION 6 WITH SECTIONS 6A TO 6G</b>	
STAGE 2 ARCHAEOLOGICAL ASSESSMENT EARL ARMSTRONG SUBDIVISION, OTTAWA, ON	
FIGURE	<b>3</b>



### **3.0 BACKGROUND AND HISTORY OF THE STUDY AREA**

Lot 21 was patented in 1799 to Captain Hugo Munro. The property changed hands three times prior to the purchase of the property by John Larkin and his family in 1852. The Larkin family appears on the census records in 1861 as residing on the property. A complete property history was provided in the Stage 1 archaeological assessment (Golder 2009b). A dwelling is shown on the 1863 Walling map under the name J. Larkin (Figure 4). At this time a single story log dwelling was listed on the Lot. The Lot was split into two sections, north and south, in 1865 and was owned by two brothers, John and Mathew Larkin.

By 1871 the census records listed a house on the west side of the southern half of the property, a barn/stable and a fanning mill, belonging to Mathew Larkin. Also listed in the 1871 census is a house, barn/stable and fanning mill on the north side of the property, belonging to John Larkin. Both houses are visible on the 1879 Belden Map (Figure 5). The 1891 census described the southern house as a two storey wood home with six rooms. Both of the Larkin dwellings are shown on the 1906 Topographic Map (Figure 6).

The 1891 census records describe the Mathew Larkin house as a two storey home with 6 rooms. The south half of Lot 21 remained in the Larkin Family until at least 1936.

In the 1956 Air Photo (Figure 7) a dwelling is visible in section 6G, in the approximate location of the John Larkin dwelling, while the remains of the Mathew Larkin dwelling are visible in the centre of section 6C.

According to the Ottawa E-Mapping system the house located in the northwest corner (section 6G), was demolished sometime after 2002. This house was a Listed heritage building under the name S. Markwell Farm with the address 1420 Earl Armstrong and was described as a; "two storey house; truncated gable roof". Aside from the buildings associated with the Larkin dwellings and the buildings demolished in 2002, there is no evidence of other dwellings having existed in this Operation. The area has been used for agricultural purposes since the mid 1800's.

Three archaeological assessments have been conducted in and adjacent to Operation 6. These are the Stage 1 and Stage 2 archaeological assessments of the North-South Light Rail Transit (LRT), and the Stage 1 addendum (Heritage Quest 2005a and 2005b; Golder 2009a) and the Stage 2 archaeological assessment of the Limbank Road widening (Golder 2008). These assessments, as well as the Stage 1 assessment of the proposed subdivision (Golder 2009b), identified the study area as having archaeological potential and in the case of the Stage 1 North-South LRT (Heritage Quest 2005a) Operation 6 was identified as being an undesignated cultural landscape based on the presence of Mosquito Creek running to the immediate east of the Operation and the use in early nineteenth century agriculture. In addition the location of the Mathew Larkin dwelling was registered as an archaeological site (BhFv-17) during the Stage 2 of the North-South LRT (Golder 2009a) (Plate 1).



**STAGE 2 ARCHAEOLOGICAL ASSESSMENT  
PHASE 6, RIVERSIDE SOUTH DEVELOPMENT CORPORATION**

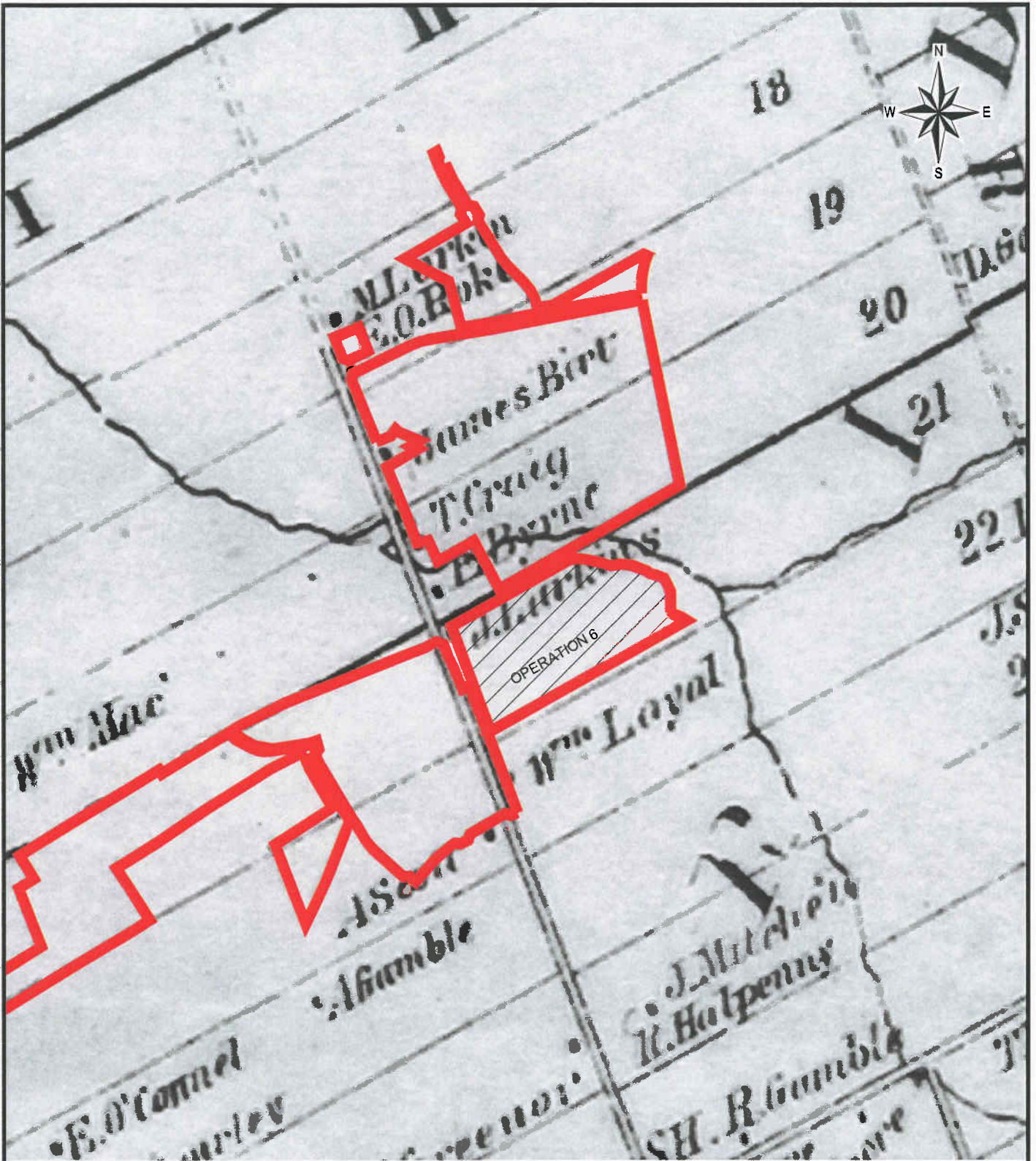
**Table 1: Outline of Historic Property Ownership (nineteenth century)**

Date	Lot 21		
	North		South
1799	Granted to Hugh Munro		
1817	Caroline and W.F. Bates		
1852	John Larkin		
1865	John Larkin		Mathew Larkin
1883	John Larkin (west 50 acres)	John Larkin Jr. (east 50 acres)	
1871	John Larkin Jr. (100 acres)		Mathew Larkin (100 acres)
1879	John Larkin Jr. (Belden Map)		Mathew Larkin (Belden Map)
1891		Margaret Larkin (west 50 acres)	John (25 acres) and William (25 acres) Larkin
1918	John Larkin Jr.'s son John		
1922	George and Mary Otterson		



**Plate 1: The Larkin Site (BhFv-17), looking northwest from the centre of section 6C.**

FILENAME: N:\Active\2009\1126 - Environmental & Cultural Sciences\09-1126-0022 - Urban/development\Ottawa, ON\Stage 2 0911260022-04.dwg



**NOTE**

THIS FIGURE IS TO BE READ IN CONJUNCTION WITH THE ACCOMPANYING GOLDER ASSOCIATES LTD. REPORT No. 09-1126-0022



SCALE	1:20,000
DATE	June, 2009
DESIGN	E.W.
CADD	J.E.M.

TITLE

**1863 WALLING MAP**

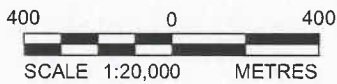
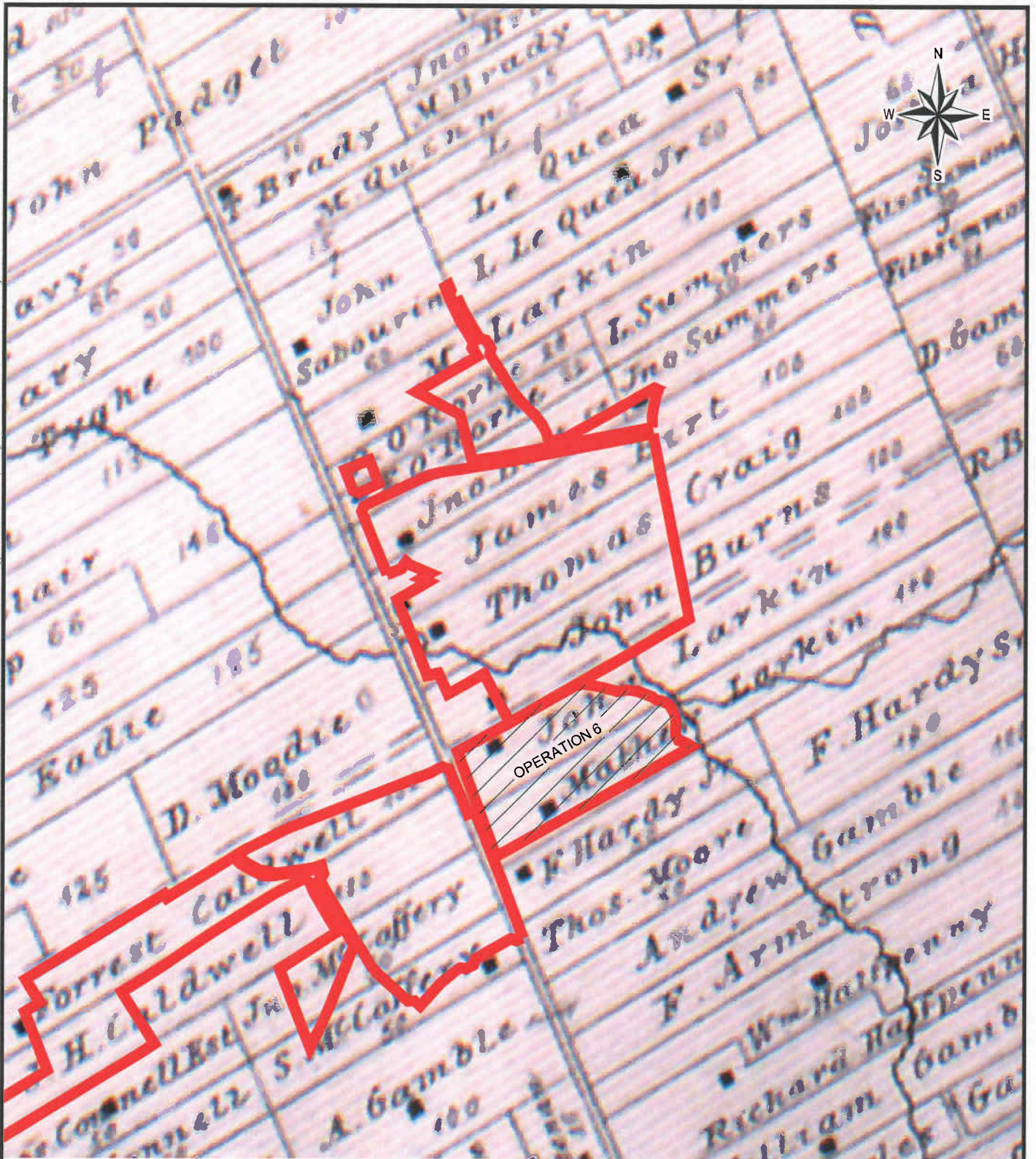
FILE No. 0911260022-04.dwg

CHECK	OCT 2010 H.J.D
REVIEW	SEP 2010 H.J.D

STAGE 2 ARCHEOLOGICAL ASSESSMENT  
EARL ARMSTRONG SUBDIVISION, OTTAWA, ON


FIGURE

**4**

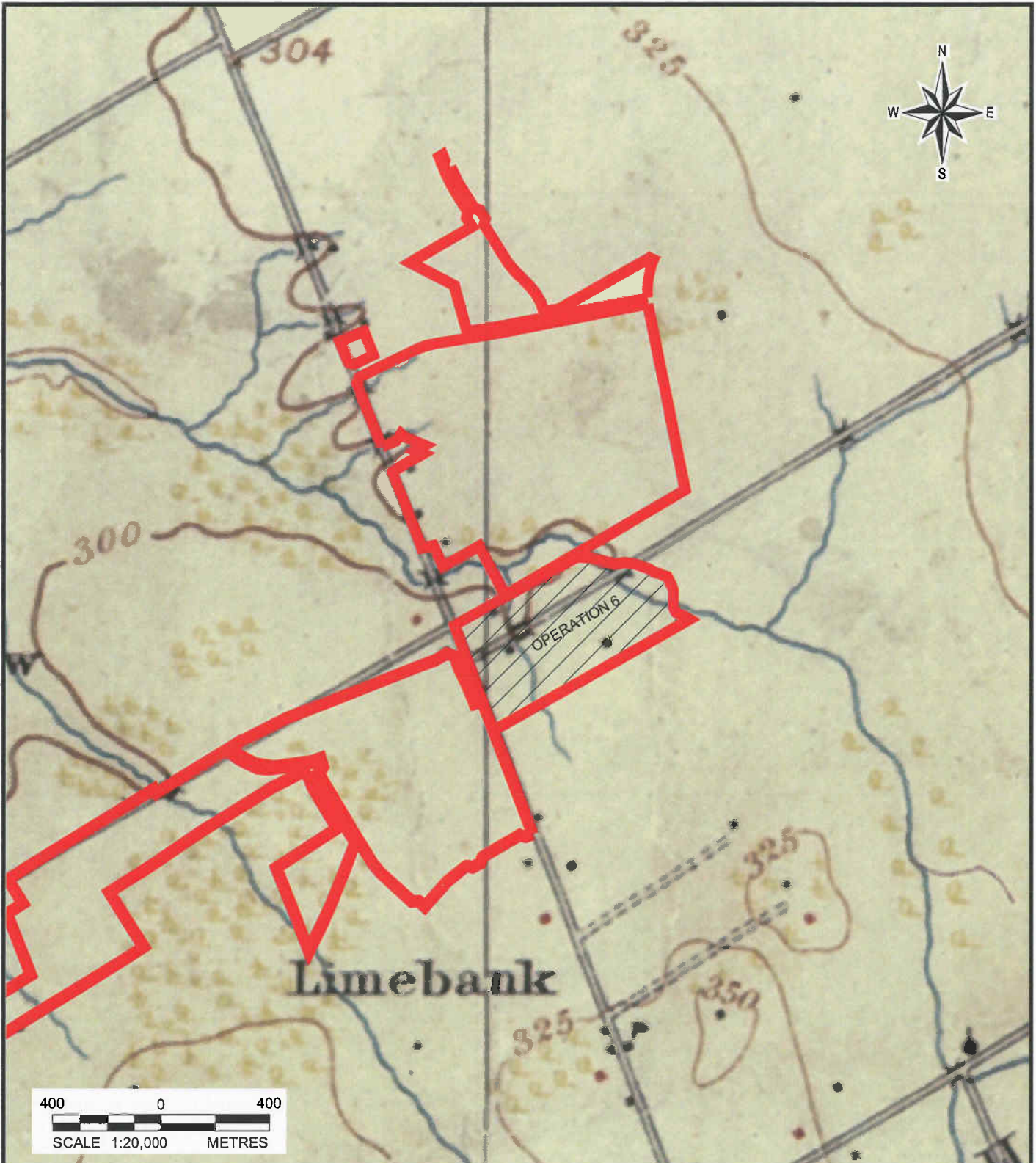


**NOTE**

THIS FIGURE IS TO BE READ IN CONJUNCTION WITH THE ACCOMPANYING GOLDER ASSOCIATES LTD. REPORT No. 09-1126-0022

 <b>Golder Associates</b> Ottawa, Ontario	SCALE 1:20,000	<b>1879 BELDEN MAP</b>
	DATE June, 2009	
	DESIGN E.W.	
	CADD J.E.M.	
FILE No. 0911260022-05.dwg	CHECK OCT 2010 H.J.D.	STAGE 2 ARCHEOLOGICAL ASSESSMENT EARL ARMSTRONG SUBDIVISION, OTTAWA, ON
PROJECT No. 09-1126-0022 REV. 0	REV. OCT 2010 H.J.D.	

FILENAME: N:\Active\2009\1126 - Environmental & Cultural Sciences\09-1126-0022 Urbanside CorporationStage1 -2 ArcheologyOttawa, ON\Stage 2 0911260022-06.dwg



**REFERENCE**

1906 Ottawa-Carleton Topographic Map  
(Library and Archives NMC 18372)

**NOTE**

THIS FIGURE IS TO BE READ IN CONJUNCTION WITH THE  
ACCOMPANYING GOLDER ASSOCIATES LTD.  
REPORT No. 09-1126-0022



SCALE	1:20,000
DATE	June, 2009
DESIGN	E.W.
CADD	J.E.M.

TITLE

**1906 TOPOGRAPHICAL MAP**

FILE No. 0911260022-06.dwg

CHECK	08/2010 H.J.D
REVIEW	08/2010 H.J.D

PROJECT No. 09-1126-0022

REV. 0

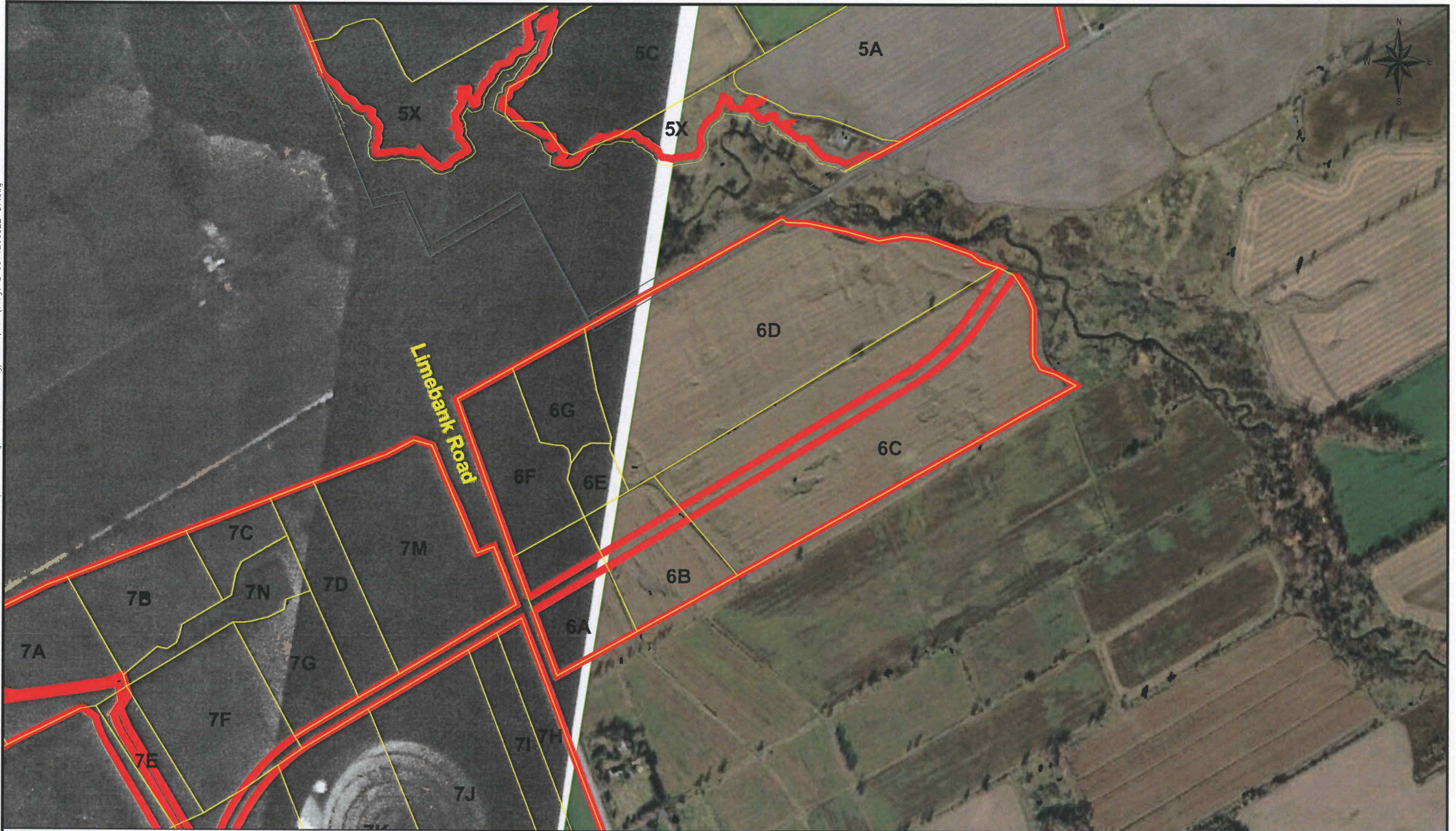
STAGE 2 ARCHEOLOGICAL ASSESSMENT  
EARL ARMSTRONG SUBDIVISION, OTTAWA, ON

FIGURE



**6**

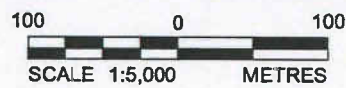


FILENAME: N:\Active\2009\1126 - Environmental & Cultural Sciences\09-1126-0022 - 2 Archaeology\Ottawa, ON\Stage 2 0911260022-07.dwg



**LEGEND**

	STUDY AREA BOUNDARY
	SUB-OPERATION BOUNDARY



**REFERENCE**  
 BASE IMAGE PROVIDED BY GOOGLE EARTH PRO, 2009.  
 AIR PHOTO, 1956, NATIONAL AIR LIBRARY (A15332-95)

**NOTE**  
 THIS FIGURE IS TO BE READ IN CONJUNCTION WITH THE  
 ACCOMPANYING GOLDER ASSOCIATES LTD.  
 REPORT No. 09-1126-0022



FILE No. 0911260022-07.dwg  
 PROJECT No. 09-1126-0022 REV.

SCALE	1:5,000
DATE	Mar. 2010
DESIGN	B.L.
CADD	B.L.
CHECK	BCY 2010 HJD
REVIEW	BCY 2010 HJD

TITLE	<b>1956 AIR PHOTOGRAPH WITH OPERATION 6 OUTLINE</b>
STAGE 2 ARCHAEOLOGICAL ASSESSMENT EARL ARMSTRONG SUBDIVISION, OTTAWA, ON	
FIGURE	<b>7</b>



## **4.0 METHODOLOGY AND RESULTS**

### **4.1 Methodology**

Due to the large size of the overall study area Operations and sections were created. The five RSDC development areas, or phases, were used to divide the study area into 5 Operations identified as 5, 6, 7, 8 and 9. These Operations are illustrated in Figure 2.

The Operations were further divided into sections based on pre-existing demarcations within the Operations. Most of the study area is used for farming and has been divided into fields. These fields are separated by trees and or ditches. The fields were labelled with a letter and identified as sections. Phase 6 has 7 sections 6A to 6G (Figure 3).

Operation 6 consisted of cultivated field that consisted of poorly drained clay soils. At the eastern end, the property is drained by Mosquito Creek with a small tributary that drained the western half of the property. The conditions were very wet and muddy. The contractor hired to plough and disk the fields determined that it was not possible to disk the soil based on the wet conditions (Plate 2). Fields were ploughed and allowed to weather prior to the pedestrian survey.

Permission to access the property was provided by RSDC.



**Plate 2: Wet conditions in section 6D, looking south from the north end of section 6D.**



## STAGE 2 ARCHAEOLOGICAL ASSESSMENT PHASE 6, RIVERSIDE SOUTH DEVELOPMENT CORPORATION

Ploughing was completed on sections 6A to 6F during the first week of November in 2009. On November 10, 2009, after the fields had been weathered by rain, a crew of 6 walked each section in 5 metre intervals. Field walking generally followed the direction of the furrows created by the plough.

An unnamed tributary of Mosquito Creek ran through Operation 6 between sections 6A and 6B on the south and between 6E and 6D and 6G and 6D in the north. The Creek is relatively narrow between 6A and 6B, but widens out between sections 6E and 6G, bridged by a small structure (Plate 3). These areas have swamp like conditions and could not be test pitted.



**Plate 3: Small bridge built with left over materials, crossing between sections 6G and 6D, looking north from the boundary of 6G and 6D.**

Section 6G consisted of tall grasses and mature trees. This area had not been cultivated for at least 30 years and was therefore test pitted. Test pitting took place on November 30<sup>th</sup> with a crew of 5. Test pits were dug at 5 m intervals from the ditch at Earl Armstrong Road in the north, to the tributary and ditch surrounding the area in the east, west and south. The day was cold and snowy, but the ground and surrounding water had not yet begun to freeze (Plate 4).



**Plate 4: Test pitting, looking southwest from the centre of section 6G.**

All artifacts located during field work were bagged and labelled with the date, Operation, section, individual who located the find and any other notes of interest. A waypoint was taken using a 'MobiTest' device, which provides a track plot of the area walked by the individual wearing the unit and a coordinate which can be placed in Google Earth as a \*.kml file, or used in other mapping systems.

Artifacts were washed, sorted and catalogued. All materials remain with the Golder Ottawa office until appropriate arrangements can be made for their long term curation.

## 4.2 Results

**Table 2: Summary of section survey strategies and coverage area**

Section	Approx. Area (m <sup>2</sup> )	Conditions/Approach	Approx. Area Surveyed	Number of Artifacts
6A	21393	Pedestrian survey in 5 m intervals	95%	1
6B	24591	Pedestrian survey in 5 m intervals	90%	3
6C	104474	Pedestrian survey in 5 m intervals	95%	682
6D	104758	Pedestrian survey in 5 m intervals	95%	30
6E	5547	Pedestrian survey in 5 m intervals	95%	0
6F	23741	Pedestrian survey in 5 m intervals, tributary between 9G and 9F to wet to test	95%	5
6G	14608	Test pitting in 5 m intervals throughout the area, excluding some areas which were wet at the edges	85%	135
<b>Total</b>	<b>299112</b>			<b>856</b>



A complete artifact catalogue is available in Appendix B.

#### **4.2.1 Section 6A**

Section A was located along the east side of Limebank Road bounded on the north by the field line determining the boundary between the north and south halves of the lot. This area consisted of heavy clay soil with a ditch running to the east of the field. Approximately 95% of the section was surveyed. A small area between this ploughed field and the field in section 6B was not surveyed as it was too wet. Only one artifact was located in this section, this was a fragment of a small hard paste porcelain cup or creamer container (artifact 041, Plate 5).



**Plate 5: Artifact #041, a porcelain cup or creamer from section 6A.**

#### **4.2.2 Section 6B**

Section 6B was a field that was demarcated on the north, east and west sides by ditches associated with a tributary of Mosquito Creek. The soil in this field is heavy clay (Plate 6). Approximately 95% of this section was surveyed, with a small portion along the ditches too wet to be test pitted. Three artifacts were located within this area. The artifacts included a vitrified white earthenware rim fragment, an ironstone rim fragment and a white earthenware fragment with green transfer print (Plate 7).



**Plate 6: Field walking in section 6B, looking north from the southern edge of this section.**



**Plate 7: Artifacts located in section 6B. 1) vitrified white earthenware rim fragment; 2) ironstone rim fragment and 3) white earthenware fragment with green transfer print.**



### 4.2.3 Section 6C

Section 6C was one of the largest sections that consisted of a large field which covered the central and eastern portions of the southern side of the Operation. It consisted of heavy clay soils bordered along the west by Mosquito Creek and on the east by a ditch. It is divided from section 6D by a fence line. A total of 682 artifacts were collected from this section. Only two artifacts were located in the western half of the sections, these were refined white earthenware and an ironstone fragment (Artifact numbers 139 and 140). The artifacts were located in a cluster in the west/central section of the section. This area has been identified as the Larkin Site (BhFv-17) (Plate 1). Visible artifacts were collected and replaced with flags and waypoints were taken at the flags to identify the overall size and circumference of the scatter. The scatter has a very distinct north-south boundary of 65 m. Ploughing in this field runs east to west, scattering the artifacts in these directions and creating a less definite east-west boundary of approximately 72 m. Randomly scattered artifacts are located west of the site to the boundary between sections 6C and 6B.

Artifacts collected from the Larkin Site include; ceramic (red earthenware, stoneware, ironstone, porcelain, refined and vitrified white earthenware and yellowware) (Plates 8 and 9), coal, fauna material (bone), glass (Plate 10), metal (iron and copper alloy) (Plate 11) and stone (slate).

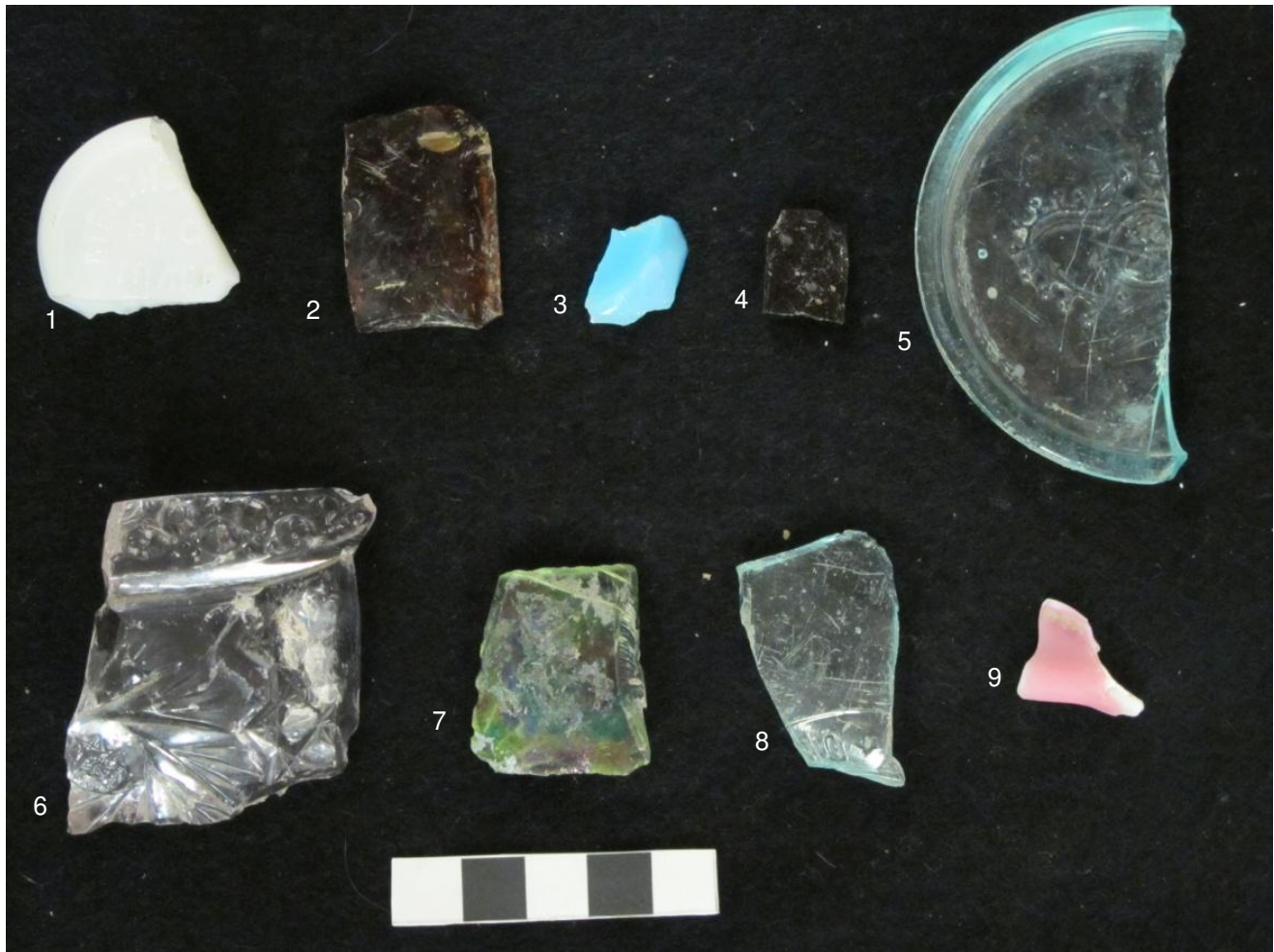


**Plate 8: Selection of artifacts with makers marks from the Larkin Site in section 6C. 1) Alfred Meaken vitrified white earthenware; 2) St. John's ironstone; 3 and 5) St. John's ironstone; 4) vitrified white earthenware with an unknown marking.**



**Plate 9:** Selection of artifacts from the Larkin Site in section 6C, 1) dark blue transfer print; 2) refined white earthenware with an aqua makers mark; 3) vitrified white earthenware cup/mug with a decal; 4) refined white earthenware with pink transfer print; 5) vitrified white earthenware plate with blue willow transfer print and a 'MADE IN ENGLAND' makers mark; 6) refined white hollow earthenware with green transfer print; 7) refined white earthenware plate with aqua transfer print.





**Plate 10: Selection of glass artifacts section 6C showing the variety of glass located at the Larkin Site. 1) white (milk glass) cylindrical hollowware with embossed lettering reading “MENTHO...REC....TRADE...”; 2) plain amber cylindrical hollowware fragment; 3) hollowware blue body fragment, jar liner; 4) dark green hollowware fragment; 5) jar liner; 6) light purple manganese pressed glass hollowware; 7) plain green cylindrical hollowware; 8) light aqua hollowware cylinder with embossed lettering “DE...”; 9) layered pink/white hollowware body fragment.**



**Plate 11: A selection of metal artifacts from the Larkin Site in section 6C. 1) oval iron ring; 2) indeterminate copper alloy artifact, possibly part of a pocket knife?; 3) iron ring; 4) iron cotter pin.**

A table of artifact types, decorations and markings is provided below with the known dates of manufacture for these objects and the quantity of the artifacts in section 6C. It should be noted that one artifact can fall under multiple descriptions and be counted several times within the table (eg. a stamp decorated fragment of vitrified earthenware with a makers mark). Although the latest date of manufacture of an object does not indicate the latest date of purchase, let alone ownership, conclusions may still be drawn from the earliest date of manufacture of some items and about the general date ranges as a whole.



**Table 3: Date ranges for the some of the artifacts collected at the Larkin Site**

Description	Earliest manufactured date	Latest manufactured date	# Artifacts in 6C
Stamp decorated <sup>1</sup>	1845	1930	4
Transfer print green or pink <sup>1</sup>	1828	Present	18
Decal <sup>1</sup>	1890	n/a	12
St. Johns Stone Chinaware Company <sup>2</sup>	1873	1893	3
Alfred Meaken Ironstone <sup>3</sup>	1875	n/a	3
Vitrified White Earthenware <sup>1</sup>	1842	n/a	212
Refined White Earthenware <sup>4</sup>	1830	n/a	80
Marked "ENGLAND" <sup>5,6</sup>	1880	n/a	2
Marked "MADE IN ENGLAND" <sup>6</sup>	1900+	n/a	4
Marked "LTD" <sup>6</sup>	1860 (common after 1880)	n/a	1
Albany Slip <sup>7</sup>	1805	1920	6
Marked 'Made in Japan' <sup>8</sup>	1921	n/a	1
Manganese Glass (light purple) <sup>1</sup>	1880	1920	23
Threaded Finish jar <sup>9</sup>	1919	n/a n/a n/a n/a n/a n/a n/a n/a n/a n/a	1

\* Latest dates indicate the latest date of manufacture, not of site occupation

\* The artifact number is not the minimum or maximum number of vessels, several artifacts may belong to one object.

#### 4.2.4 Section 6D

This section is located in the northeast quarter of the Operation. It is adjacent to Earl Armstrong Road on the north and Mosquito Creek to the east the boundary between the north and south halves of the lot demarcates the southern boundary of the section. The soils in this area are composed of heavy wet clay. The area has very poor drainage with many large puddles at the time of the field survey (Plate 2).

This section produced 30 artifacts, 26 of which were located in a small cluster at the southwest end of the section. The artifacts included mostly food and beverage related items and two structural artifacts (a fragment of brick and window pane glass) (Plate 12).

<sup>1</sup> Miller 2000, p. 13

<sup>2</sup> Collard 1984

<sup>3</sup> Weatherbee 1980

<sup>4</sup> Hicks & Beaudry 2006

<sup>5</sup> Godden n.d., p. 11

<sup>6</sup> Godden 1988, p.34

<sup>7</sup> Miller 2000, p. 10

<sup>8</sup> Miller 2000, p.9

<sup>9</sup> Miller 2000, p. 2



**Plate 12: A selection of artifacts located in the small artifact cluster in section 6D. 1) ironstone cup fragment; 2) wine bottle fragment; 3) coarse yellow stone hollow ware; 4) blue transfer print refined white earthenware; 5) black stamped refined white earthenware.**

The assemblage included 3 fragments of edge decorated blue impressed unscaloped patterned ceramic fragments. This type of decoration was manufactured specifically between 1841 and 1857. Aside from this no other artifacts can be specifically dated to pre-1900.

**Table 4: Date ranges for the some of the artifacts collected at the section 6D cluster (does not include artifacts outside of the cluster).**

Edge decorated: blue impressed pattern/unscaloped <sup>10</sup>	1841	1857	3
Stamp decorated <sup>11</sup>	1845	1930	1
Vitrified White Earthenware <sup>1</sup>	1842		2
Refined White Earthenware <sup>12</sup>	1830		15

<sup>10</sup> Miller 2000, p. 3

<sup>11</sup> Miller 2000, p. 13

<sup>12</sup> Hicks & Beaudry 2006



#### **4.2.5 Section 6E**

This is the smallest of the sections in Operation 6. This area was covered by heavy wet clay and is bordered by ditches and a tributary which runs between 6E and 6D. No artifacts were located in this section.

#### **4.2.6 Section 6F**

This section consisted of a ploughed field of heavy clay located at the west end of the north half of the lot. A total of 5 artifacts were located in this section. These artifacts included metal (Plate 13) and ceramic dinnerware.



**Plate 13: A selection of metal artifacts located in section 6F, 1) artifact #161, possible iron farm equipment; 2) artifact #162, possible iron file fragment and 3) artifact #160 a cut nail.**



#### **4.2.7 Section 6G**

This section could not be ploughed as it consisted of tall grasses, mature trees and structural debris. The area was test pitted on November 30, 2009. A ditch divided this section from the surrounding fields. Much of the area directly adjacent to the ditches was wet and could not be completely test pitted. In addition to this a small section running north-south from Earl Armstrong Road could not be test pitted because it was covered in gravel. This area is likely the remains of the driveway associated with the now demolished residence. The majority of the area (an estimated 85%) was dry enough to test pit. The section was filled with structural debris and evidence of recently demolished structures.

The property had two large piles of cut trees (logs stripped of branches) lining the driveway (Plate 14). It also had the remains of an electrical hook-up, with wires hanging from utility poles to trees in the section. These wires are not active, but indicate the recent presence of a dwelling.



**Plate 14: Section 6G showing the piles of timber located on either side of the gravel driveway, looking north towards Earl Armstrong Road from the north centre of the section.**

A small bridge was discovered which crossed the unnamed tributary of Mosquito Creek between sections 6G and 6D (Plate 3). This bridge is overgrown with tall grasses and is somewhat obstructed from view, however; on closer inspection it was noted that the bridge was built with left over or used construction materials. The 'culvert' of the bridge appears to be an old boiler or oil tank with a hole cut out of both ends for water to pass through (Plate 14). The wooden portions of the bridge include the stringer (aka carriage) of a stair case (Plate 15).



**Plate 14: An old boiler or oil tank being re-used as a culvert in the bridge between sections 6D and 6G, looking northwest.**



**Plate 15: Staircase stringer being re-used in the small bridge running between sections 6G and 6D, looking northwest.**



This section produced 136 artifacts of which 98 were structural debris, 25 were indeterminate, 5 were food/beverage related, 3 were ecological and 4 were tools/equipment (Plate 16). The majority of test pits, specifically in the southern portion of the section, contained large quantities of structural debris such as concrete and brick. Not all structural debris artifacts were collected given their size and recent age. Some examples of artifacts not collected included brick (many were collected, but not all), tin roofing and concrete (Plate 17).

Based on the Ottawa E-mapping site satellite photos a dwelling and associated buildings were present up until at least 2002. The recent occupation of this area and the subsequent demolition of the buildings have left large amounts of modern debris and have disturbed some of the natural soils in this section.



**Plate 16: Two indeterminate metal artifacts located in section 6G.**





**Plate 17: Test pit in section 6G showing grey clay soil and concrete at the bottom of the test pit.**



## **5.0 INTERPRETATION**

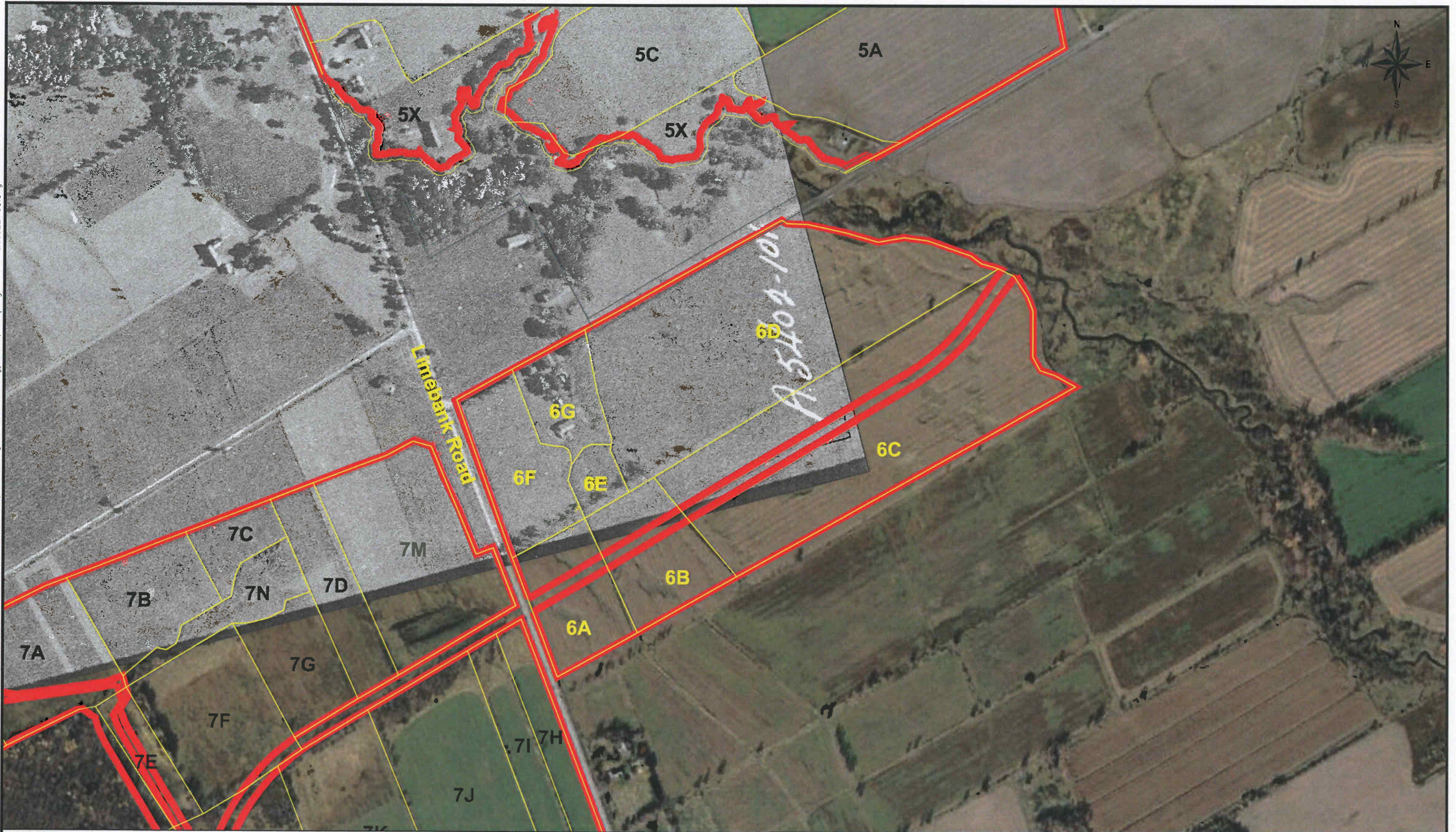
Based on the historic information the Mathew Larkin residence was present in section 6C by at least 1871 and possibly as early as 1865. The dwelling was occupied for an unknown length of time, but it was certainly demolished by 1956 as it is no longer visible in the 1956 air photo (Figure 7). The artifacts provide some indication of the date range of manufacture for several of the objects that would have been used in the household. These dates coincide well with the known period of occupation and indicate that the house continued to be occupied for many years. From these artifacts we can see that the latest known date of manufacture of one of the artifacts was after 1921, a porcelain fragment marked “Made in Japan” indicating that the house was likely utilized until at least this date. It is possible that the dwelling or some of the associated buildings were still present in 1936 when the property ownership moved outside of the Larkin Family. This site fulfils the requirements of the 2009 Ministry of Culture Guidelines for recommendation for a Stage 3, in addition to this a Stage 3 assessment of this site was previously recommended in the Stage 2 North-South LRT (Golder 2009a).

The small cluster of artifacts at the southwest corner of section 6D may on its own indicate the presence of a site. However; when assessing the artifacts in the context of the available historic documentation there was no documented dwelling in this location (Figures 4, 5, 6 and 8). In addition the number of artifacts does not appear very high when compared to the two known dwelling locations in the Operation (sections 6C and 6G). Based on both the available air photos (Figures 7 and 8) and historic maps this area was the edge of one of the ploughed fields and appears to have been so for sometime. It was also the dividing line between the John Larkin and Mathew Larkin properties. This would have been a good location for a summer garbage dump.

As only a small number of artifacts were located here, and only 3 of which are known to be manufactured before 1900, this site does not fulfill the requirements for a Stage 3 assessment as recommended by the Ministry of Culture Guidelines (MOE, 2009).

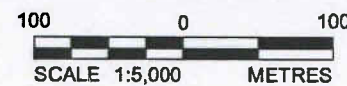
Section 6G contains large amounts of structural debris from the demolition of buildings. Both the recent and prolonged occupation of this section and the disturbance caused by the demolition has decreased the archaeological potential of this section. Although the original John Larkin dwelling would have been in this area it is unlikely that there would be much distinct (in reference to the time frame of the nineteenth century occupation), undisturbed evidence in the archaeological record. The majority of the artifacts located during the Stage 2 are recent structural debris. As such this site does not qualify for a Stage 3 assessment according to the Ministry of Cultures 2009 Guidelines (MOE 2009).

FILENAME: N:\Active\2009\1126 - Environmental & Cultural Sciences\09-1126-0022 - 2 Archaeology\Ottawa, ON\Stage 2 0911260022-08.dwg



**LEGEND**

	STUDY AREA BOUNDARY
	SUB-OPERATION BOUNDARY



**REFERENCE**  
 BASE IMAGE PROVIDED BY GOOGLE EARTH PRO, 2009.  
 AIR PHOTO, 1936, NATIONAL AIR LIBRARY (A5404-11)

**NOTE**  
 THIS FIGURE IS TO BE READ IN CONJUNCTION WITH THE  
 ACCOMPANYING GOLDER ASSOCIATES LTD.  
 REPORT No. 09-1126-0022



FILE No. 0911260022-08.dwg  
 PROJECT No. 09-1126-0022 REV.

SCALE	1:5,000
DATE	Mar. 2010
DESIGN	B.L.
CADD	B.L.
CHECK	BET 2010 H.J.D.
REVIEW	BET 2010 H.J.D.

TITLE	<b>1936 AIR PHOTOGRAPH WITH OPERATION 6 OUTLINE</b>
STAGE 2 ARCHAEOLOGICAL ASSESSMENT EARL ARMSTRONG SUBDIVISION, OTTAWA, ON	
FIGURE	<b>8</b>



## **6.0 SUMMARY AND RECOMMENDATIONS**

Golder was retained by RSDC to undertake a Stage 2 archaeological assessment of Riverside South, located on Part Lots 20-22, Broken Front Concession; Lots 21 and 22, Concession 1, Rideau Front; and Lots 17-21, Concession 2, Rideau Front, Geographic Township of Gloucester, City of Ottawa. The five RSDC development areas, or phases, were used to divide the study area into 5 Operations identified as 5, 6, 7, 8 and 9. This report deals with the Stage 2 archaeological assessment of Operation 6. This Operation is located on Part Lot 21, Concession 2, on the south side of Earl Armstrong, east of Limebank Road.

Operation 6 was sub-divided into 7 sections following the pre-existing divisions of the area based on the ploughed fields. Operation 6 was field walked on November 10 and 11, 2009. One unploughed section, 6G, was test pitted on November 30<sup>th</sup>.

No pre-contact artifacts were located in Operation 6. Two historic sites were located in sections 6C, 6G and a small cluster of artifacts was located in 6D. The Larkin Site (BhFv-17), in section 6C is recommended for a Stage 3 archaeological assessment. Based on the long occupation, recent demolition and disturbance of the 6G area no further archaeological assessment is recommended. The artifact cluster in 6D is not large enough in quantity or diagnostic enough to fall under the category of sites that would require a Stage 3 according to the 2009 Ministry of Culture Guidelines. As such it is not recommended for a Stage 3 archaeological assessment.

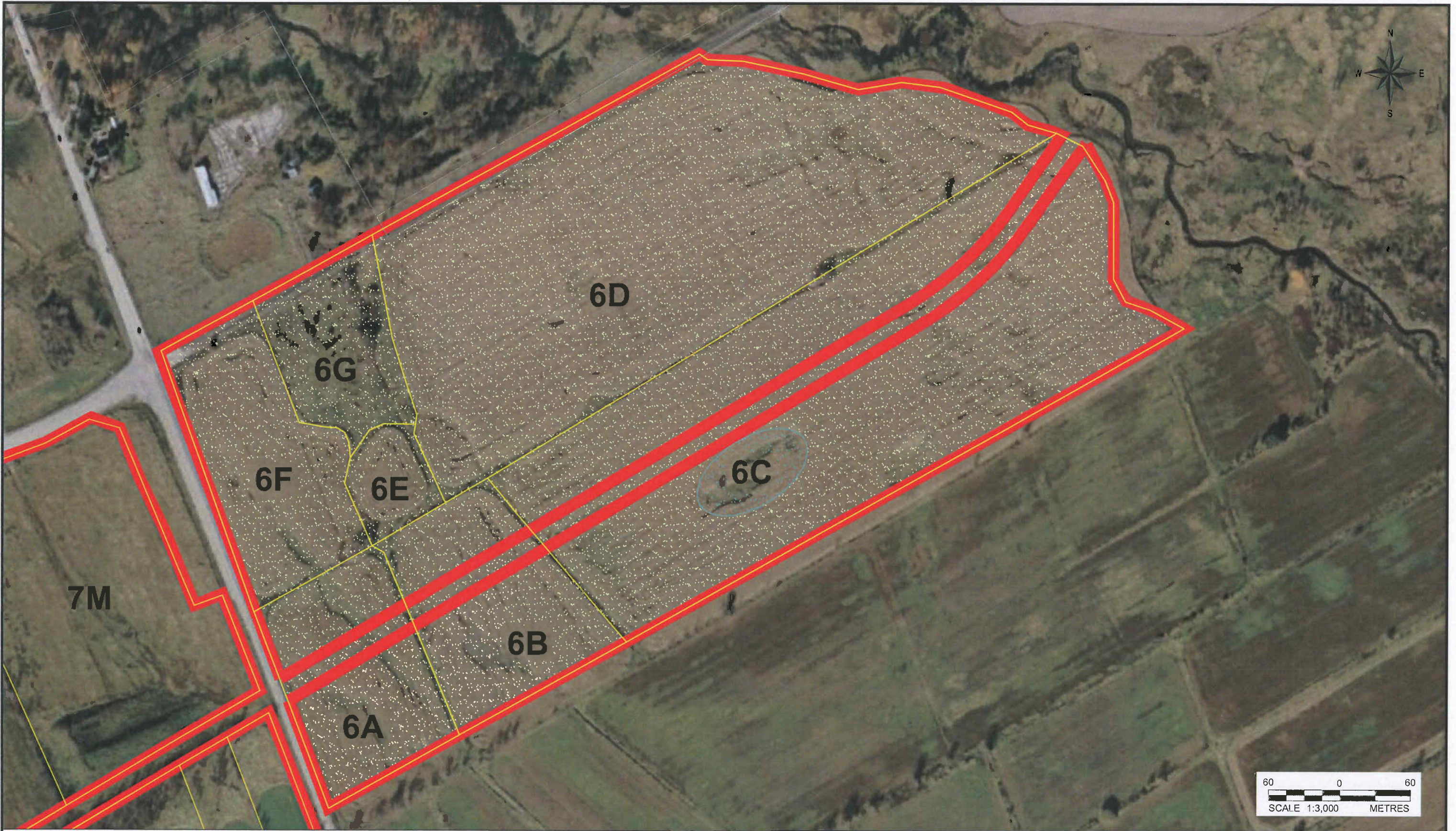
Sections 6A, 6B, 6E and 6F produced no significant artifacts and/or features of archaeological interest. These areas are not recommended for further archaeological assessments (Figure 9).

This report is submitted to the Ministry of Tourism and Culture as a condition of licensing in accordance with Part VI of the Ontario Heritage Act, R.S.O. 1990, c 0.18. The report is reviewed to ensure that the licensed consultant archaeologist has met the terms and conditions of their archaeological licence, and that the archaeological field work and report recommendations ensure the conservation, protection and preservation of the cultural heritage of Ontario.

This investigation has provided the basis for the following recommendations:

- 1) That a Stage 3 archaeological investigation of the Larkin site (BhFv-17) be conducted prior to any disturbance of section 6C, and sections 6A, 6B, 6D, 6E, 6F and 6G require no further archaeological assessments (Figure 3). Archaeological sites recommended for further archaeological fieldwork or protection remain subject to Section 48 (1) of the Ontario Heritage Act, and may not be altered, or have artifacts removed, except by a person holding an archaeological license;
- 2) That should deeply buried archaeological remains be encountered on this property, the Ministry of Tourism and Culture, (416) 314-7148, be notified immediately;
- 3) That in the event that human remains be encountered during construction, the proponent should immediately contact both the Ministry of Tourism and Culture, (416) 314-7148, and the registrar or Deputy Registrar of the Cemeteries Unit of the Small Business and Consumer Services, (416) 326-8393, be notified immediately; and,
- 4) That artifacts collected as a part of this investigation will remain with the licences at Golder Associates Ltd. until an appropriate repository can be identified.

FILENAME: N:\Active\2009\1126 - Environmental & Cultural Sciences\09-1126-0022 - 2 ArchaeologyOttawa, ON\Stage 2 0911260022-09.dwg



LEGEND	
	STUDY AREA BOUNDARY
	SUB-OPERATION BOUNDARY
	AREAS NOT REQUIRING FURTHER ARCHAEOLOGICAL ASSESSMENT
	AREA REQUIRING A FURTHER STAGE 3 ASSESSMENT

**REFERENCE**  
 BASE PLAN PROVIDED BY GOOGLE EARTH PRO, 2009.

**NOTE**  
 THIS FIGURE IS TO BE READ IN CONJUNCTION WITH THE ACCOMPANYING GOLDER ASSOCIATES LTD. REPORT No. 09-1126-0022

 <b>Golder Associates</b> Ottawa, Ontario	SCALE	1:3,000
	DATE	Mar. 2010
FILE No. 0911260022-09.dwg	DESIGN	B.L.
PROJECT No. 09-1126-0022	CADD	B.L.
REV.	CHECK	OCT 2010 HJD.
	REVIEW	OCT 2010 HJD.

TITLE	
<b>OPERATION 6 ARCHAEOLOGICAL RECOMMENDATIONS</b>	
STAGE 2 ARCHAEOLOGICAL ASSESSMENT EARL ARMSTRONG SUBDIVISION, OTTAWA, ON	FIGURE <b>9</b>



## **7.0 LIMITATIONS OF THIS REPORT**

Golder Associates Ltd. (Golder) has prepared this report in a manner consistent with that level of care and skill ordinarily exercised by members of the archaeological profession currently practicing under similar conditions in the jurisdiction in which the services are provided, subject to the time limits and physical constraints applicable to this report. No other warranty, expressed or implied is made.

This report has been prepared for the specific site, design objective, developments and purpose described to Golder by the Riverside South Development Corporation (the Client). The factual data, interpretations and recommendations pertain to a specific project as described in this report and are not applicable to any other project or site location.

The information, recommendations and opinions expressed in this report are for the sole benefit of the Client. No other party may use or rely on this report or any portion thereof without Golder's express written consent. If the report was prepared to be included for a specific permit application process, then upon the reasonable request of the client, Golder may authorize in writing the use of this report by the regulatory agency as an Approved User for the specific and identified purpose of the applicable permit review process. Any other use of this report by others is prohibited and is without responsibility to Golder. The report, all plans, data, drawings and other documents as well as all electronic media prepared by Golder are considered its professional work product and shall remain the copyright property of Golder, who authorizes only the Client and Approved Users to make copies of the report, but only in such quantities as are reasonably necessary for the use of the report by those parties. The Client and Approved Users may not give, lend, sell, or otherwise make available the report or any portion thereof to any other party without the express written permission of Golder. The Client acknowledges the electronic media is susceptible to unauthorized modification, deterioration and incompatibility and therefore the Client cannot rely upon the electronic media versions of Golder's report or other work products.

Unless otherwise stated, the suggestions, recommendations and opinions given in this report are intended only for the guidance of the Client in the design of the specific project.

Special risks occur whenever archaeological investigations are applied to identify subsurface conditions and even a comprehensive investigation, sampling and testing program may fail to detect all or certain archaeological resources. The sampling strategies incorporated in this study comply with those identified in the Ministry of Culture's Archaeological Assessment Technical Guidelines (1993) (Stages 1 - 3 and Reporting Format).



---

**STAGE 2 ARCHAEOLOGICAL ASSESSMENT  
PHASE 6, RIVERSIDE SOUTH DEVELOPMENT CORPORATION**

---

## **CLOSURE**

We trust that this report meets your current needs. If you have any questions, or if we may be of further assistance, please contact the undersigned.

**GOLDER ASSOCIATES LTD.**

Brandy Lockhart, M.A.  
Archaeologist

Hugh J. Daechsel, M.A.  
Senior Archaeologist/Associate

BL/HJD/clb

n:\active\2009\1126 - environmental & cultural sciences\09-1126-0022 urbandate corporationstage1 -2 archaeologyottawa, on\stage 2 archaeology\report\phase 6\final report\09-1126-0022-2000\_final rpt\_rsd\_phase 6\_oct2010.docx

Golder, Golder Associates and the GA globe design are trademarks of Golder Associates Corporation.



## REFERENCES

Belden H. & Co.

1878 **Illustrated Historical Atlas of the Counties of Hastings and Prince Edward County, Ontario.** Belleville, Reprinted by Mika Publishing Co.

Collard, Elizabeth

1984 **Nineteenth Century Pottery and Porcelain in Canada.** 2<sup>nd</sup> Edition. McGill-Queen's University Press, Kingston and Montreal.

Godden, Geoffrey A.

1964 **Encyclopaedia of British Pottery and Porcelain Marks.** Bonanza Books: New York.

1988 **Encyclopaedia of British Porcelain Manufacturers,** Barrie & Jenkins, London.

Golder Associates Ltd.

2009a **Stage 2 Archaeological Assessment, North South Light Rail Transit (LRT) Corridor, Geographic Township of Gloucester and Nepean, City of Ottawa, Ontario.** Report prepared for Marshall Macklin Monaghan.

2009b **Stage 1 Archaeological Assessment Proposed Subdivisions Located Along River/Earl Armstrong/Limebank Roads, Geographic Township of Gloucester City of Ottawa, Ontario.** Report prepared by Golder Associates for Riverside South Development Corporation, on File Ministry of Culture, Toronto.

2008 **Stage 2 Archaeological Assessment Portion of the Proposed Limebank Road Widening Part of Lots 9-21 Concession 1 & 2 Rideau Front, Geographic Township of Gloucester, City of Ottawa, Ontario.** Report prepared by Golder Associates for Morrison Hershfeld Corporation, on file Ministry of Culture, Toronto.

Hicks, Dan & Beaudry, Mary C.

2006 **The Cambridge Companion to Historical Archaeology.** Cambridge University Press: New York.





---

## STAGE 2 ARCHAEOLOGICAL ASSESSMENT PHASE 6, RIVERSIDE SOUTH DEVELOPMENT CORPORATION

---

Kennett, Brenda

2005a **Stage 1 Archaeological & Heritage Assessment of the Proposed North-South Corridor Light Rail Transit Project, Geographic Townships of Gloucester & Nepean, City of Ottawa.** Report prepared by Heritage Quest for McCormick Rankin Corporation by Heritage Quest Inc.

2005b **Stage 1 Archaeological & Heritage Assessment of the Proposed North-South Corridor Light Rail Transit Project, Geographic Townships of Gloucester & Nepean, City of Ottawa.** Addendum. Report prepared by Heritage Quest for J.L. Richards & Associates Limited by Heritage Quest Inc.

Miller, George L.

2000 **Telling Time for Archaeologists.** Northeast Historical Archaeology. Vol. 29, pp.1-17.

Ministry of Culture

2009 **Draft Standards and Guidelines for Consultant Archaeologists.** Toronto Ontario.

Saint Mary's University

n.d. **Saint Mary's University Archaeology Lab Ceramics Database; Bristol-Style Glazed Bottle.** Saint Mary's University Anthropology Page, available online; <http://www.smu.ca/academic/arts/anthropology/ceramics/bristol-style-glazed-bottle.html>

last accessed April 6, 2010.

Weatherbee, Jean

1980 **A Look at White Ironstone.** Wallace-Homestead Book Company: Iowa.

### **National Map Collection (NMC):**

1825 Plan of the Township of Gloucester. William Coffin. NMC 4830

1863 Map of the County of Carleton, Canada West. H.F. Walling. NMC 43061

1906 Ottawa-Carleton Topography Map. NMC 18372



# **APPENDIX A**

## **Photographic Catalogue**



## APPENDIX A Photographic Catalogue

Project #	Exp. #	Phase #	Subject	Direction	Date	Photographer
09-1126-0022 (2000)	D011	6	Field 6B field walking	NE	11/10/09	BL
09-1126-0022 (2000)	D012	6	Field 6B field walking	NE	11/10/09	BL
09-1126-0022 (2000)	D013	6	Field 6B looking towards Limebank Road	W	11/10/09	BL
09-1126-0022 (2000)	D014	6	Field 6C Larkin site	N	11/10/09	BL
09-1126-0022 (2000)	D015	6	Field 6C Larkin site	W	11/10/09	BL
09-1126-0022 (2000)	D016	6	Field 6C collecting surface finds around the Larkin site	S	11/10/09	BL
09-1126-0022 (2000)	D017	6	Field 6C Larkin Site stones		11/10/09	BL
09-1126-0022 (2000)	D018	6	Field 6C Larkin Site stones		11/10/09	BL
09-1126-0022 (2000)	D019	6	Field 6C Larkin site	N	11/10/09	BL
09-1126-0022 (2000)	D020	6	Larkin site stones in a pile in the centre of field 6C	N	11/10/09	BL
09-1126-0022 (2000)	D021	6	Field 6D showing field conditions	SW	11/11/09	BL
09-1126-0022 (2000)	D022	6	Field 6D showing field conditions	W	11/11/09	BL
09-1126-0022 (2000)	D023	6	Field 6D showing the ploughing and wet conditions	S	11/11/09	BL
09-1126-0022 (2000)	D024	6	Field 6G showing the small wooden bridge at the south end of the field	N	11/11/09	BL
09-1126-0022 (2000)	D025	6	Field 6G showing the small wooden bridge at the south end of the field	N	11/11/09	BL
09-1126-0022 (2000)	D026	6	Close up of the bridge to section 6G	W	11/11/09	BL
09-1126-0022 (2000)	D027	6	Piece of metal grating used in the construction of the bridge in 6G	W	11/11/09	BL
09-1126-0022 (2000)	D028	6	Field 6F showing a section which is not yet ploughed in the background	W	11/11/09	BL
09-1126-0022 (2000)	D029	6	Old oil tank or boiler used as a culvert under the bridge in field 6G	W	11/11/09	BL
09-1126-0022 (2000)	D030	6	Bridge showing re-used wood (possibly old stairs) in construction	NW	11/11/09	BL
09-1126-0022 (2000)	D095	6	Area 6G during test pitting (from left to right; K. Lockhart, D. Goss, N. Brandon, W. Nalley)	E	11/30/09	BL
09-1126-0022 (2000)	D096	6	Area 6G showing piles of logs on either side of an old roadway. Earl Armstrong road in the background	N	11/30/09	BL
09-1126-0022 (2000)	D097	6	F. Scardera in field 6G test pitting	NE	11/30/09	BL
09-1126-0022 (2000)	D098	6	Cement or concrete at the bottom of a test pit in the central east section of 6G.		11/30/09	BL



## APPENDIX A Photographic Catalogue

Project #	Exp. #	Phase #	Subject	Direction	Date	Photographer
09-1126-0022 (2000)	D099	6	Cement in the bottom of a test pit in area 6G		11/30/09	BL
09-1126-0022 (2000)	D100	6	Tin roofing located along the eastern edge of area 6G.		11/30/09	BL
09-1126-0022 (2000)	D101	6	Tin roofing with a shovel as a relative scale.		11/30/09	BL
09-1126-0022 (2000)	D102	6	Tin roofing at the central eastern section of area 6G.		11/30/09	BL
09-1126-0022 (2000)	D103	6	Will Nalley and Dan Goss at the eastern edge of area 6G test pitting along the ditch.	E	11/30/09	BL
09-1126-0022 (2000)	D104	6	Nicole Brandon and Kara Lockhart test pitting at the eastern edge of area 6G.	NE	11/30/09	BL
09-1126-0022 (2000)	D105	6	Nicole Brandon and Kara Lockhart at the edge of area 6G with field 6D in the background	NE	11/30/09	BL
09-1126-0022 (2000)	D106	6	Eastern edge of area 6G looking south	S	11/30/09	BL
09-1126-0022 (2000)	D107	6	Area 6G with piles of wood in the background.	NW	11/30/09	BL
09-1126-0022 (2000)	D108	6	Eastern edge of area 6G, Nicole Brandon picking up small balls of brick like material.	N	11/30/09	BL
09-1126-0022 (2000)	D109	6	Field crew (left to right) K. Lockhart, D. Goss, W. Nalley & N. Brandon	E	11/30/09	BL
09-1126-0022 (2000)	D110	6	Field crew (left to right) B. Lockhart, D. Goss, W. Nalley & N. Brandon	E	11/30/09	KL
09-1126-0022 (2000)	D111	6	Small balls made of brick like material scattered at the eastern edge of 6G		11/30/09	BL
09-1126-0022 (2000)	D112	6	Several small balls of brick like material located near the silt fence at the east edge of area 6G		11/30/09	BL
09-1126-0022 (2000)	D351	6	Artifact #041 from Sub-operation 6A, a hard pressed porcelain hollow ware rim fragment	-	07/04/10	BL
09-1126-0022 (2000)	D352	6	Artifacts from sub-operation 6B, on left #043; ironstone dinner plate fragment, top right #042; Vitriified Earthenware saucer fragment and bottom right #044; green print	-	07/04/10	BL
09-1126-0022 (2000)	D353	6	Artifacts from sub-operation 6B, on left #043; ironstone dinner plate fragment, top right #042; Vitriified Earthenware saucer fragment and bottom right #044; green print	-	07/04/10	BL
09-1126-0022 (2000)	D354	6	Artifacts from sub-operation 6D #157, at left blue transfer print at right brown stamped	-	07/04/10	BL
09-1126-0022 (2000)	D355	6	A selection of artifacts from sub-operation 6D artifact cluster #142-155, at top right wine bottle fragment, at top left ironstone cup fragment, at bottom right black stamped refined white earthenware, at bottom middle blue transfer print refined white earthenware, at bottom left coarse yellow stone hollow ware.	-	07/04/10	BL



## APPENDIX A Photographic Catalogue

Project #	Exp. #	Phase #	Subject	Direction	Date	Photographer
09-1126-0022 (2000)	D356	6	A selection of artifacts from sub-operation 6D artifact cluster #142-155, at top right wine bottle fragment, at top left ironstone cup fragment, at bottom right black stamped refined white earthenware, at bottom middle blue transfer print refined white earthenware, at bottom left coarse yellow stone hollow ware.	-	07/04/10	BL
09-1126-0022 (2000)	D357	6	A selection of artifacts from sub-operation 6D artifact cluster #142-155, at top right wine bottle fragment, at top left ironstone cup fragment, at bottom right black stamped refined white earthenware, at bottom middle blue transfer print refined white earthenware, at bottom left coarse yellow stone hollow ware.	-	07/04/10	BL
09-1126-0022 (2000)	D358	6	Artifacts from sub-operation 6F, at top #161 possible iron farm equipment, middle #162 possible iron file fragment, at bottom #160 a cut nail	-	07/04/10	BL
09-1126-0022 (2000)	D359	6	Artifacts from sub-operation 6F, at top #161 possible iron farm equipment, middle #162 possible iron file fragment, at bottom #160 a cut nail	-	07/04/10	BL
09-1126-0022 (2000)	D360	6	Artifacts from sub-operation 6F, at right #163, vitrified white earthenware saucer rim, at left #159, refined white earthenware with edge decorated impressed blue pattern (unscaloped)	-	07/04/10	BL
09-1126-0022 (2000)	D361	6	Artifacts from sub-operation 6F, at right #163, vitrified white earthenware saucer rim, at left #159, refined white earthenware with edge decorated impressed blue pattern (unscaloped)	-	07/04/10	BL
09-1126-0022 (2000)	D362	6	Artifacts from sub-operation 6F, at right #163, vitrified white earthenware saucer rim, at left #159, refined white earthenware with edge decorated impressed blue pattern (unscaloped)	-	07/04/10	BL
09-1126-0022 (2000)	D363	6	Artifacts from 6G, at left #437 possible pipe fitting, at right #435 iron pipe	-	07/04/10	BL
09-1126-0022 (2000)	D364	6	Artifacts from 6G, at left #437 possible pipe fitting, at right #435 iron pipe	-	07/04/10	BL
09-1126-0022 (2000)	D365	6	Artifacts #411, from sub-operation 6G, small sample of small balls of indeterminate material and use located at the eastern edge of the sub-operation	-	07/04/10	BL
09-1126-0022 (2000)	D366	6	Artifacts #411, from sub-operation 6G, small sample of small balls of indeterminate material and use located at the eastern edge of the sub-operation	-	07/04/10	BL
09-1126-0022 (2000)	D367	6	Artifacts from sub-operation 6G, top #387 scissor blades, bottom #412 iron container	-	07/04/10	BL
09-1126-0022 (2000)	D368	6	Artifacts from sub-operation 6G, #412 iron container	-	07/04/10	BL
09-1126-0022 (2000)	D369	6	Artifacts from sub-operation 6G, #387 scissor blades	-	07/04/10	BL



## APPENDIX A Photographic Catalogue

Project #	Exp. #	Phase #	Subject	Direction	Date	Photographer
09-1126-0022 (2000)	D370	6	A selection of makers marks from sub-operation 6C, the Larkin Site; top right St. John's ironstone, top left Alfred Meaken vitrified white earthenware, bottom right and bottom left St. John's ironstone, bottom centre, vitrified white earthenware with an unknown marking.	-	07/04/10	BL
09-1126-0022 (2000)	D371	6	A selection of makers marks from sub-operation 6C, the Larkin Site; top right St. John's ironstone, top left Alfred Meaken vitrified white earthenware, bottom right and bottom left St. John's ironstone, bottom centre, vitrified white earthenware with an unknown marking.	-	07/04/10	BL
09-1126-0022 (2000)	D372	6	Two fragments of Albany Slip cylindrical hollow ware from sub-operation 6C	-	07/04/10	BL
09-1126-0022 (2000)	D373	6	A selection of porcelain fragments found at the Larkin Site in sub-operation 6C, at top right, red-orange hollowware, top centre; flat decal, top left; hollowware marked "MADE IN BAVARIA", bottom right; decal saucer, bottom centre; blue transfer print marked "MADE IN JAPAN" on back, bottom left Toy tableware	-	07/04/10	BL
09-1126-0022 (2000)	D374	6	A selection of porcelain fragments found at the Larkin Site in sub-operation 6C, at top right, red-orange hollowware, top centre; flat decal, top left; hollowware marked "MADE IN BAVARIA", bottom right; decal saucer, bottom centre; blue transfer print marked "MADE IN JAPAN" on back, bottom left Toy tableware	-	07/04/10	BL
09-1126-0022 (2000)	D375	6	Patterned white ware artifacts from sub-operation 6C, the Larkin Site, top left dark blue transfer print, second from top left; refined white earthenware with an aqua makers mark, second from top right; vitrified white earthenware cup/mug with a decal, top right; refined white earthenware with pink transfer print, bottom right; refined white earthenware plate with aqua transfer print, bottom centre; refined white hollow earthenware with green transfer print, bottom left; vitrified white earthenware plate with blue willow transfer print and a 'MADE IN ENGLAND' makers mark.	-	07/04/10	BL
09-1126-0022 (2000)	D376	6	Patterned white ware artifacts from sub-operation 6C, the Larkin Site, top left dark blue transfer print, second from top left; refined white earthenware with an aqua makers mark, second from top right; vitrified white earthenware cup/mug with a decal, top right; refined white earthenware with pink transfer print, bottom right; refined white earthenware plate with aqua transfer print, bottom centre; refined white hollow earthenware with green transfer print, bottom left; vitrified white earthenware plate with blue willow transfer print and a 'MADE IN ENGLAND' makers mark.	-	07/04/10	BL
09-1126-0022 (2000)	D377	6	Artifacts located at the Larkin site in sub-operation 6C, at left; coarse buffstone cylindrical hollowware with clear glaze, at right; coarse red earthenware with brown glaze	-	07/04/10	BL



**APPENDIX A**  
Photographic Catalogue

Project #	Exp. #	Phase #	Subject	Direction	Date	Photographer
09-1126-0022 (2000)	D378	6	Artifacts located at the Larkin site in sub-operation 6C, at left; coarse buffstone cylindrical hollowware with clear glaze, at right; coarse red earthenware with brown glaze	-	07/04/10	BL
09-1126-0022 (2000)	D379	6	Mammal bone fragments found at the Larkin Site in sub-operation 6C	-	07/04/10	BL
09-1126-0022 (2000)	D380	6	Mammal bone fragments found at the Larkin Site in sub-operation 6C	-	07/04/10	BL
09-1126-0022 (2000)	D381	6	Metal artifacts from the Larkin site in sub-operation 6C, at left; oval iron ring, at right; iron cotter pin, at top centre; indeterminate copper alloy artifact, possibly part of a pocket knife?, at bottom centre; iron ring.	-	07/04/10	BL
09-1126-0022 (2000)	D382	6	Metal artifacts from the Larkin site in sub-operation 6C, at left; oval iron ring, at right; iron cotter pin, at top centre; indeterminate copper alloy artifact, possibly part of a pocket knife?, at bottom centre; iron ring.	-	07/04/10	BL
09-1126-0022 (2000)	D383	6	Glass artifacts located at the Larkin Site in sub-operation 6C, at top right; jar liner, at top second from right; case bottle fragment, at top centre; hollowware blue body fragment, top second from left; plain amber cylindrical hollowware fragment, top left white cylindrical hollowware with embedded lettering reading "MENTHO...REC....TRADE...", bottom right; layered pink/white hollowware body fragment, second from bottom right; light aqua hollowware cylinder with embossed lettering "DE...", bottom second from left; plain green cylindrical hollowware, left; light purple manganese pressed glass hollowware	-	07/04/10	BL
09-1126-0022 (2000)	D384	6	Glass artifacts located at the Larkin Site in sub-operation 6C, at top right; jar liner, at top second from right; case bottle fragment, at top centre; hollowware blue body fragment, top second from left; plain amber cylindrical hollowware fragment, top left white cylindrical hollowware with embedded lettering reading "MENTHO...REC....TRADE...", bottom right; layered pink/white hollowware body fragment, second from bottom right; light aqua hollowware cylinder with embossed lettering "DE...", bottom second from left; plain green cylindrical hollowware, left; light purple manganese pressed glass hollowware	-	07/04/10	BL
09-1126-0022 (2000)	D385	6	Glass artifacts located at the Larkin Site in sub-operation 6C, at top right; jar liner, at top second from right; case bottle fragment, at top centre; hollowware blue body fragment, top second from left; plain amber cylindrical hollowware fragment, top left white cylindrical hollowware with embedded lettering reading "MENTHO...REC....TRADE...", bottom right; plain green cylindrical hollowware, second from bottom right; light aqua hollowware cylinder with embossed lettering "DE...", bottom second from left; layered pink/white hollowware body fragment, left; light purple manganese pressed glass hollowware	-	07/04/10	BL



## APPENDIX A Photographic Catalogue

Project #	Exp. #	Phase #	Subject	Direction	Date	Photographer
09-1126-0022 (2000)	D386	6	Glass artifacts located at the Larkin Site in sub-operation 6C, at top right; jar liner, at top second from right; case bottle fragment, at top centre; hollowware blue body fragment, top second from left; plain amber cylindrical hollowware fragment, top left white cylindrical hollowware with embedded lettering reading "MENTHO...REC....TRADE...", bottom right; plain green cylindrical hollowware, second from bottom right; light aqua hollowware cylinder with embossed lettering "DE...", bottom second from left; layered pink/white hollowware body fragment, left; light purple manganese pressed glass hollowware	-	07/04/10	BL

BL – Brandy Lockhart

n:\active\2009\1126 - environmental & cultural sciences\09-1126-0022 urbandale corporation\stage1 -2 archaeology\ottawa, on\stage 2 archaeology\report\phase 6\final report\appendix a - photographic catalogue\_phase 6.docx





# **APPENDIX B**

## **Artifact Inventory**



## APPENDIX B Artifact Inventory

Prov 2	Prov 3	Material 1	Material 2	Function 1	Function 2	Object	Fragment	Dec 1	Dec 2	Manufacture	Alteration	# of Artifacts	Note
6A	041	ceramic	porcelain: hard paste	food/ beverage	tableware	holloware	rim	moulded	flutes			1	flared rim, handle, cup or small jug/ creamer
6B	042	ceramic	vitrified white earthenware	food/ beverage	tableware	saucer	rim	moulded	clear/ colourless			1	
6B	043	ceramic	ironstone	food/ beverage	tableware	plate: dinner (9-12")	rim	moulded	clear/ colourless			1	
6B	044	ceramic	refined white earthenware	food/ beverage	tableware	plate: indeterminate	body	transfer print	green			1	
6C	045	ceramic	vitrified white earthenware	food/ beverage	tableware	indeterminate	body	plain	clear/ colourless			1	
6C	046	glass	indeterminate	furnishing	lighting	lamp chimney	rim	beaded	clear/ colourless	machine made		1	
6C	047	ceramic	vitrified white earthenware	food/ beverage	tableware	flatware	body	plain	clear/ colourless			1	
6C	048	ceramic	refined white earthenware	food/ beverage	tableware	plate: indeterminate	rim	hand painted	rim line: blue			1	
6C	049	ceramic	vitrified white earthenware	food/ beverage	tableware	saucer	vessel portion	moulded	Wheat			1	
6C	050	ceramic	ironstone	food/ beverage	tableware	cup/ mug	body	moulded	ribbed			1	
6C	050	ceramic	refined white earthenware	food/ beverage	tableware	indeterminate	body	plain	clear/ colourless			3	
6C	051	metal	iron	indeterminate		rod	incomplete					1	l=18cm
6C	052	ceramic	vitrified white earthenware	food/ beverage	tableware	holloware	body	plain	clear/ colourless			1	
6C	053	ceramic	ironstone	food/ beverage	tableware	indeterminate	body	plain	clear/ colourless			1	
6C	054-136	ceramic	coarse earthenware: red	food/ beverage	indeterminate	holloware	body	glaze: lead	brown			1	storage or cookware
6C	054-136	ceramic	coarse earthenware: red	structural		pipe: drain	incomplete	glaze: salt	brown			1	
6C	054-136	ceramic	coarse earthenware: red	structural	building component	brick	incomplete					2	
6C	054-136	ceramic	coarse earthenware: red	tools/ equipment	agricultural	flower pot	body	glaze: none				1	



## APPENDIX B Artifact Inventory

Prov 2	Prov 3	Material 1	Material 2	Function 1	Function 2	Object	Fragment	Dec 1	Dec 2	Manufacture	Alteration	# of Artifacts	Note
6C	054-136	ceramic	coarse stoneware: buff	food/ beverage	storage container	holloware: cylindrical	body	glaze: lead	clear/ colourless			1	
6C	054-136	ceramic	coarse stoneware: grey	food/ beverage	storage container	holloware: cylindrical	base/ body	slipped/ glaze: salt	Albany (interior)/ clear			4	
6C	054-136	ceramic	coarse stoneware: grey	food/ beverage	storage container	holloware: cylindrical	lid	slipped/ glaze: salt	Albany (interior)/ clear			2	
6C	054-136	ceramic	ironstone	food/ beverage	tableware	cup/ mug	body	moulded	ribbed			4	
6C	054-136	ceramic	ironstone	food/ beverage	tableware	cup/ mug	footring/ footrim	plain	clear/ colourless			7	
6C	054-136	ceramic	ironstone	food/ beverage	tableware	cup/ mug	rim/ body	hand painted	Copper Tea Leaf			2	
6C	054-136	ceramic	ironstone	food/ beverage	tableware	flatware	base	plain	clear/ colourless			1	blk trans partial mark '..STONE'
6C	054-136	ceramic	ironstone	food/ beverage	tableware	flatware	base	plain	clear/ colourless			1	partial blk trans mark 'ST.JOH...'
6C	054-136	ceramic	ironstone	food/ beverage	tableware	flatware	body	plain	clear/ colourless			18	
6C	054-136	ceramic	ironstone	food/ beverage	tableware	flatware	footring/ footrim	plain	clear/ colourless			1	blk trans partial mark, 'ALFRED M../ ENGLAN..'
6C	054-136	ceramic	ironstone	food/ beverage	tableware	flatware	footring/ footrim	plain	clear/ colourless			14	
6C	054-136	ceramic	ironstone	food/ beverage	tableware	flatware	rim	moulded	Wheat			19	
6C	054-136	ceramic	ironstone	food/ beverage	tableware	holloware	body	moulded	clear/ colourless			10	
6C	054-136	ceramic	ironstone	food/ beverage	tableware	holloware	footring/ footrim	plain	clear/ colourless			5	lgr vessels
6C	054-136	ceramic	ironstone	food/ beverage	tableware	indeterminate	body	plain	clear/ colourless			109	
6C	054-136	ceramic	ironstone	food/ beverage	tableware	plate: indeterminate	rim	plain	clear/ colourless			8	
6C	054-136	ceramic	ironstone	food/ beverage	tableware: serving	pitcher	handle	plain	clear/ colourless			3	pitcher/ jug/ creamer?
6C	054-136	ceramic	porcelain: hard paste	food/ beverage	indeterminate	cup/ mug	body	hand painted	gold			1	



## APPENDIX B Artifact Inventory

Prov 2	Prov 3	Material 1	Material 2	Function 1	Function 2	Object	Fragment	Dec 1	Dec 2	Manufacture	Alteration	# of Artifacts	Note
6C	054-136	ceramic	porcelain: hard paste	food/ beverage	indeterminate	flatware	rim/ footrim/ body	decal/ lithograph	polychrome			3	saucers or bread plates
6C	054-136	ceramic	porcelain: hard paste	food/ beverage	indeterminate	holloware	body	hand painted	polychrome			1	brown, purple, blue, orange, yellow
6C	054-136	ceramic	porcelain: hard paste	food/ beverage	indeterminate	holloware	body	hand painted	red-orange			1	
6C	054-136	ceramic	porcelain: hard paste	food/ beverage	indeterminate	saucer	rim	decal/ moulded	polychrome/ scalloped			1	sm pink flowers and green leaves, matches previous
6C	054-136	ceramic	porcelain: hard paste	food/ beverage	indeterminate	teabowl/ cup	rim	decal/ lithograph	polychrome			3	sm pink flowers and green leaves
6C	054-136	ceramic	porcelain: hard paste	food/ beverage	tableware	cup/ mug	handle	plain	clear/ colourless			2	
6C	054-136	ceramic	porcelain: hard paste	food/ beverage	tableware	cup/ mug	rim	hand painted	rim line: gold			1	
6C	054-136	ceramic	porcelain: hard paste	food/ beverage	tableware	cup/ mug	rim	plain	clear/ colourless			4	
6C	054-136	ceramic	porcelain: hard paste	food/ beverage	tableware	holloware	footring/ footrim	moulded	clear/ colourless			1	sm feet, mark 'MADE IN BAVARIA', candy dish?
6C	054-136	ceramic	porcelain: hard paste	food/ beverage	tableware	holloware	footring/ footrim	plain	clear/ colourless			4	
6C	054-136	ceramic	porcelain: hard paste	food/ beverage	tableware	indeterminate	body	plain	clear/ colourless			17	
6C	054-136	ceramic	porcelain: hard paste	food/ beverage	tableware	saucer	footring/ footrim	plain	clear/ colourless			5	probably all saucers
6C	054-136	ceramic	porcelain: hard paste	food/ beverage	tableware	saucer	rim	hand painted	rim line: gold			4	one may be a toy
6C	054-136	ceramic	porcelain: hard paste	food/ beverage	tableware	saucer	rim	plain	clear/ colourless			2	
6C	054-136	ceramic	porcelain: hard paste	food/ beverage	tableware	saucer	rim/ base	transfer print	blue			2	Willow pattern?, mark 'MADE / IN / JAPAN'
6C	054-136	ceramic	porcelain: hard paste	food/ beverage	tableware	teabowl/ cup	rim	transfer print	blue			1	Willow pattern?
6C	054-136	ceramic	porcelain: hard paste	indeterminate		indeterminate	rim	hand painted	rim line: gold			1	odd shape
6C	054-136	ceramic	porcelain: hard paste	personal/ societal	recreation	toy: miniature tableware	handle	moulded	clear/ colourless			1	sm handle
6C	054-136	ceramic	refined white earthenware	food/ beverage	tableware	cup/ mug	rim	transfer print	blue		spalled	1	



## APPENDIX B Artifact Inventory

Prov 2	Prov 3	Material 1	Material 2	Function 1	Function 2	Object	Fragment	Dec 1	Dec 2	Manufacture	Alteration	# of Artifacts	Note
6C	054-136	ceramic	refined white earthenware	food/ beverage	tableware	flatware	base	transfer print	aqua			2	partial mark, '...AM / ENGLAND'
6C	054-136	ceramic	refined white earthenware	food/ beverage	tableware	flatware	footrim/ body	transfer print	aqua			9	
6C	054-136	ceramic	refined white earthenware	food/ beverage	tableware	flatware	footring/ footrim	transfer print	blue			1	partial mark
6C	054-136	ceramic	refined white earthenware	food/ beverage	tableware	holloware	body	stamped	blue			1	
6C	054-136	ceramic	refined white earthenware	food/ beverage	tableware	holloware	body	stamped	pink			2	
6C	054-136	ceramic	refined white earthenware	food/ beverage	tableware	holloware	rim	transfer print/ moulded	green			3	
6C	054-136	ceramic	refined white earthenware	food/ beverage	tableware	indeterminate	body	transfer print	blue: dark			2	
6C	054-136	ceramic	refined white earthenware	food/ beverage	tableware	indeterminate	body	transfer print	blue: light			1	
6C	054-136	ceramic	refined white earthenware	food/ beverage	tableware	plate: dinner (9-12")	rim/ footrim	transfer print	blue: dark			11	flow?
6C	054-136	ceramic	refined white earthenware	food/ beverage	tableware	plate: indeterminate	rim	hand painted	rim line: blue			1	
6C	054-136	ceramic	refined white earthenware	food/ beverage	tableware	plate: indeterminate	rim/ body	transfer print	aqua			12	matches previous, floral, stippled decoration, garland along rim
6C	054-136	ceramic	refined white earthenware	food/ beverage	tableware	plate: indeterminate	rim/ body	transfer print	green			7	
6C	054-136	ceramic	refined white earthenware	food/ beverage	tableware	plate: indeterminate	rim/ body	transfer print	pink			7	
6C	054-136	ceramic	refined white earthenware	food/ beverage	tableware	saucer	rim	hand painted	rim line: green			1	dbl line, one thick, one thin
6C	054-136	ceramic	refined white earthenware	food/ beverage	tableware	saucer	rim	transfer print	blue			6	or bread plates
6C	054-136	ceramic	refined white earthenware	food/ beverage	tableware	teabowl/ cup	footring/ footrim	transfer print	green			1	
6C	054-136	ceramic	refined white earthenware	food/ beverage	tableware	teabowl/ cup	rim/ body	hand painted	rim line: green			3	dbl line, one thick, one thin
6C	054-136	ceramic	refined white earthenware	food/ beverage	tableware	teabowl/ cup	rim/ body	transfer print	aqua			4	floral, stippled decoration, garland along rim
6C	054-136	ceramic	vitrified white earthenware	food/ beverage	tableware	cup/ mug	body	decal/ lithograph	polychrome			1	sm pink roses



## APPENDIX B Artifact Inventory

Prov 2	Prov 3	Material 1	Material 2	Function 1	Function 2	Object	Fragment	Dec 1	Dec 2	Manufacture	Alteration	# of Artifacts	Note
6C	054-136	ceramic	vitriified white earthenware	food/ beverage	tableware	cup/ mug	body	moulded	ribbed			5	
6C	054-136	ceramic	vitriified white earthenware	food/ beverage	tableware	cup/ mug	body	transfer print	aqua			3	lg pattern
6C	054-136	ceramic	vitriified white earthenware	food/ beverage	tableware	cup/ mug	footring/ footrim	plain	clear/ colourless			15	
6C	054-136	ceramic	vitriified white earthenware	food/ beverage	tableware	cup/ mug	handle	plain	clear/ colourless			5	
6C	054-136	ceramic	vitriified white earthenware	food/ beverage	tableware	cup/ mug	handle/ body	transfer print	blue			2	
6C	054-136	ceramic	vitriified white earthenware	food/ beverage	tableware	cup/ mug	rim	moulded	clear/ colourless			4	one floral, 3 fluted
6C	054-136	ceramic	vitriified white earthenware	food/ beverage	tableware	cup/ mug	rim	moulded	Wheat			6	
6C	054-136	ceramic	vitriified white earthenware	food/ beverage	tableware	cup/ mug	rim	plain	clear/ colourless			20	
6C	054-136	ceramic	vitriified white earthenware	food/ beverage	tableware	cup/ mug	rim	transfer print	aqua			1	
6C	054-136	ceramic	vitriified white earthenware	food/ beverage	tableware	cup/ mug	rim	transfer print	brown			2	
6C	054-136	ceramic	vitriified white earthenware	food/ beverage	tableware	flatware	base	decal/ lithograph	polychrome		worn	1	
6C	054-136	ceramic	vitriified white earthenware	food/ beverage	tableware	flatware	base	plain	clear/ colourless			2	blk trans partial mark, 'ALF..' and 'ALFRED MEA[kin].../ ENGLAND'
6C	054-136	ceramic	vitriified white earthenware	food/ beverage	tableware	flatware	base	plain	clear/ colourless			4	3 blk trans partial marks, illegible, '..TONE..', and '..& Co..', 1 green transfer partial mark '..[po]TTERY / ..LTD'
6C	054-136	ceramic	vitriified white earthenware	food/ beverage	tableware	flatware	body	plain	clear/ colourless			12	
6C	054-136	ceramic	vitriified white earthenware	food/ beverage	tableware	flatware	footring/ footrim	plain	clear/ colourless			16	
6C	054-136	ceramic	vitriified white earthenware	food/ beverage	tableware	flatware	footring/ footrim	transfer print	brown			1	
6C	054-136	ceramic	vitriified white earthenware	food/ beverage	tableware	flatware	rim	moulded	clear/ colourless			10	



## APPENDIX B Artifact Inventory

Prov 2	Prov 3	Material 1	Material 2	Function 1	Function 2	Object	Fragment	Dec 1	Dec 2	Manufacture	Alteration	# of Artifacts	Note
6C	054-136	ceramic	vitrified white earthenware	food/ beverage	tableware	flatware	rim	plain	clear/ colourless			14	
6C	054-136	ceramic	vitrified white earthenware	food/ beverage	tableware	holloware	body	plain	clear/ colourless			26	
6C	054-136	ceramic	vitrified white earthenware	food/ beverage	tableware	holloware	footring/ footrim	plain	clear/ colourless			1	
6C	054-136	ceramic	vitrified white earthenware	food/ beverage	tableware	holloware	rim	plain	clear/ colourless			3	lgr vessels, flared rims
6C	054-136	ceramic	vitrified white earthenware	food/ beverage	tableware	holloware	rim	stamped	brown			1	pink rim line
6C	054-136	ceramic	vitrified white earthenware	food/ beverage	tableware	indeterminate	body	plain	clear/ colourless			36	
6C	054-136	ceramic	vitrified white earthenware	food/ beverage	tableware	plate: indeterminate	rim	plain	clear/ colourless			2	
6C	054-136	ceramic	vitrified white earthenware	food/ beverage	tableware	plate: indeterminate	rim/ body	transfer print	blue			4	Willow pattern, one mark 'WILLOW / MADE IN ENGLAND'
6C	054-136	ceramic	vitrified white earthenware	food/ beverage	tableware	plate: muffin/ bread (3-7")	rim	decal/ lithograph	polychrome			3	blue rim line with pink flowers, faded, could be toy tableware
6C	054-136	ceramic	vitrified white earthenware	food/ beverage	tableware	saucer	body	hand painted	line: gold			1	
6C	054-136	ceramic	vitrified white earthenware	food/ beverage	tableware	saucer	rim	plain	clear/ colourless			7	
6C	054-136	ceramic	yellowware	food/ beverage	indeterminate	holloware: cylindrical	body	glaze: rockingham/ slipped	brown/ white			1	
6C	054-136	coal		fuel		sample						2	
6C	054-136	fauna	bone	ecological		mammal	incomplete					2	
6C	054-136	glass	indeterminate	food/ beverage	beverage container	bottle: case	base/ body	plain	green: dark olive	moulded: contact		6	
6C	054-136	glass	indeterminate	food/ beverage	storage container	jar: liner	incomplete	embossed	aqua: light	moulded: contact		1	embossed crown
6C	054-136	glass	indeterminate	food/ beverage	tableware	holloware	body	embossed	purple: light	moulded: press		2	
6C	054-136	glass	indeterminate	food/ beverage	tableware	holloware	rim	embossed	clear/ colourless	moulded: press		1	
6C	054-136	glass	indeterminate	indeterminate		bottle: cylindrical	neck/ body	plain	purple: light	moulded: contact		17	



## APPENDIX B Artifact Inventory

Prov 2	Prov 3	Material 1	Material 2	Function 1	Function 2	Object	Fragment	Dec 1	Dec 2	Manufacture	Alteration	# of Artifacts	Note
6C	054-136	glass	indeterminate	indeterminate		bottle: indeterminate	finish: 1 part	plain	purple: light	moulded: contact		1	lg mouth, milk bottle?
6C	054-136	glass	indeterminate	indeterminate		bottle: rectangular	base/ body	plain	purple: light	moulded: contact		2	
6C	054-136	glass	indeterminate	indeterminate		holloware	body	layered	pink/ white	indeterminate		2	
6C	054-136	glass	indeterminate	indeterminate		holloware	body	plain	blue: opaque	indeterminate		2	
6C	054-136	glass	indeterminate	indeterminate		holloware: cylindrical	base	embossed: lettering	white	moulded: contact		1	'MENTHO../ REC../ TRADE..'
6C	054-136	glass	indeterminate	indeterminate		holloware: cylindrical	base	plain	white	moulded: contact		1	
6C	054-136	glass	indeterminate	indeterminate		holloware: cylindrical	body	embossed: lettering	aqua: light	moulded: contact		1	'DE..'
6C	054-136	glass	indeterminate	indeterminate		holloware: cylindrical	body	plain	amber	indeterminate		2	
6C	054-136	glass	indeterminate	indeterminate		holloware: cylindrical	body	plain	aqua: light	indeterminate		2	
6C	054-136	glass	indeterminate	indeterminate		holloware: cylindrical	body	plain	clear/ colourless	indeterminate		1	
6C	054-136	glass	indeterminate	indeterminate		holloware: cylindrical	body	plain	green	indeterminate		4	
6C	054-136	glass	indeterminate	indeterminate		holloware: cylindrical	body	plain	green: light	indeterminate		1	
6C	054-136	glass	indeterminate	indeterminate		holloware: cylindrical	body	plain	white	moulded: contact		4	seem to be different from previous containers
6C	054-136	glass	indeterminate	indeterminate		holloware: polygonal	body	embossed	clear/ colourless	moulded: contact		1	ladder-like pattern
6C	054-136	glass	indeterminate	indeterminate		holloware: polygonal	body	plain	aqua: light	moulded: contact		2	
6C	054-136	glass	indeterminate	indeterminate		holloware: polygonal	body	plain	clear/ colourless	moulded: contact		2	
6C	054-136	glass	indeterminate	indeterminate		holloware: polygonal	body	plain	green	indeterminate		1	
6C	054-136	glass	indeterminate	indeterminate		holloware: polygonal	body	plain	green: light	moulded: contact		6	
6C	054-136	glass	indeterminate	indeterminate		jar: cylindrical	finish: threaded	plain	purple: light	machine made		1	
6C	054-136	glass	indeterminate	personal/ societal	adornment	bead: spherical	complete	plain	blue: opaque	moulded: contact		1	





## APPENDIX B Artifact Inventory

Prov 2	Prov 3	Material 1	Material 2	Function 1	Function 2	Object	Fragment	Dec 1	Dec 2	Manufacture	Alteration	# of Artifacts	Note
6C	054-136	glass	indeterminate	personal/ societal	health/ hygiene	bottle: panel	body	plain	clear/ colourless	moulded: contact		2	
6C	054-136	glass	indeterminate	structural	building component	window pane	incomplete	plain	aqua: light	indeterminate		12	
6C	054-136	metal	copper alloy	indeterminate		indeterminate	incomplete					2	tang from a pocket knife?
6C	054-136	metal	copper alloy	indeterminate		wire						1	
6C	054-136	metal	iron	indeterminate		bar	incomplete					1	semi-circle x-section, l=21cm
6C	054-136	metal	iron	indeterminate		bar	incomplete			cast		1	curved, l=15cm
6C	054-136	metal	iron	indeterminate		holloware: cylindrical	rim			cast		1	
6C	054-136	metal	iron	indeterminate		ring	complete					1	d=3cm
6C	054-136	metal	iron	indeterminate		ring	complete					1	oval, l=13cm
6C	054-136	metal	iron	indeterminate		wire	incomplete					1	
6C	054-136	metal	iron	indeterminate	hardware	bolt: unthreaded	complete	round head				1	l=17cm
6C	054-136	metal	iron	indeterminate	hardware	cotter pin	complete					1	with square nut, l=15cm
6C	054-136	metal	iron	structural	hardware	nail	incomplete	indeterminate		indeterminate	corroded	4	
6C	054-136	metal	iron	structural	hardware	nail: common	complete	rectangular head		cut		7	
6C	054-136	metal	iron	structural	hardware	nail: common	complete	round head		wire		4	
6C	054-136	metal	iron	structural	hardware	spike	complete	round head		wire		1	
6C	054-136	metal	iron	tools/ equipment		indeterminate	incomplete			cast		1	probably a piece of farm equipment, rod/ bolt-like, l=22
6C	054-136	stone	slate	tools/ equipment	writing	writing board	incomplete					1	
6C	054-137	metal	iron	tools/ equipment	horse related	horse equipment: horseshoe	complete					1	l=13cm
6C	137	metal	iron	tools/ equipment	horse related	horse equipment: horseshoe	complete					1	large, l=17cm



## APPENDIX B Artifact Inventory

Prov 2	Prov 3	Material 1	Material 2	Function 1	Function 2	Object	Fragment	Dec 1	Dec 2	Manufacture	Alteration	# of Artifacts	Note
6C	138	glass	indeterminate	food/ beverage	beverage container	bottle: wine	finish: 1 part	plain	green: olive	moulded: contact		1	
6C	139	ceramic	ironstone	food/ beverage	tableware	saucer	rim	moulded	Wheat			1	
6C	140	ceramic	refined white earthenware	food/ beverage	tableware	flatware	body	plain	clear/ colourless			1	
6D	141	ceramic	refined white earthenware	food/ beverage	tableware	saucer	rim	plain	clear/ colourless			1	
6D	142-155	ceramic	coarse earthenware: red	food/ beverage	indeterminate	holloware	body	glaze: lead	brown: light			1	
6D	142-155	ceramic	coarse stoneware: yellow	food/ beverage	indeterminate	holloware: cylindrical	footring/ footrim	glaze: lead	clear/ colourless			1	
6D	142-155	ceramic	ironstone	food/ beverage	tableware	cup/ mug	body	moulded	panels			1	
6D	142-155	ceramic	ironstone	food/ beverage	tableware	cup/ mug	footring/ footrim	moulded	clear/ colourless			1	
6D	142-155	ceramic	ironstone	food/ beverage	tableware	saucer	rim	moulded	clear/ colourless			1	
6D	142-155	ceramic	refined white earthenware	food/ beverage	tableware	flatware	foot	transfer print	blue			1	
6D	142-155	ceramic	refined white earthenware	food/ beverage	tableware	flatware	footring/ footrim	plain	clear/ colourless			1	
6D	142-155	ceramic	refined white earthenware	food/ beverage	tableware	flatware	rim	stamped	black			1	
6D	142-155	ceramic	refined white earthenware	food/ beverage	tableware	holloware	body	plain	clear/ colourless			3	
6D	142-155	ceramic	refined white earthenware	food/ beverage	tableware	indeterminate	body	plain	clear/ colourless		spalled	7	
6D	142-155	ceramic	refined white earthenware	food/ beverage	tableware	plate: indeterminate	rim	edge decorated: blue	impressed pattern/ unscalloped			3	
6D	142-155	ceramic	vitrified white earthenware	food/ beverage	tableware	flatware	footring/ footrim	plain	clear/ colourless			1	
6D	142-155	ceramic	vitrified white earthenware	food/ beverage	tableware	holloware	body	plain	clear/ colourless			1	
6D	142-155	glass	indeterminate	food/ beverage	beverage container	bottle: wine	push-up	plain	green: dark olive	indeterminate		1	
6D	142-155	glass	indeterminate	structural	building component	window pane	incomplete	plain	aqua: light	indeterminate		1	



## APPENDIX B Artifact Inventory

Prov 2	Prov 3	Material 1	Material 2	Function 1	Function 2	Object	Fragment	Dec 1	Dec 2	Manufacture	Alteration	# of Artifacts	Note
6D	156	ceramic	coarse earthenware: red	structural	building component	brick	incomplete					1	
6D	157	ceramic	refined white earthenware	food/ beverage	tableware	flatware	body	stamped	brown			1	
6D	157	ceramic	refined white earthenware	food/ beverage	tableware	flatware	footring/ footrim	transfer print	blue			1	'Willow' pattern
6D	158	ceramic	yellowware	food/ beverage	tableware	holloware	body	plain	clear/ colourless			1	
6F	159	ceramic	refined white earthenware	food/ beverage	tableware	plate: indeterminate	rim	edge decorated: blue	impressed pattern/ unscaloped			1	
6F	160	metal	iron	structural	hardware	nail: common	complete	rectangular head		cut	corroded	1	
6F	161	metal	iron	tools/ equipment		indeterminate	complete			cast		1	probably a piece of farm equipment, blade of some type, l=16cm
6F	162	metal	iron	tools/ equipment		tool: file	incomplete					1	possible file, l=9cm
6F	163	ceramic	vitrified white earthenware	food/ beverage	tableware	saucer	rim	plain	clear/ colourless			1	
6G	387	metal	iron	tools/ equipment		tool: scissors	blade				corroded	1	
6G	388	ceramic	coarse earthenware: red	structural	building component	brick	incomplete					1	
6G	389	ceramic	coarse earthenware: red	structural	building component	brick	incomplete					10	w=7cm
6G	390	ceramic	coarse earthenware: red	structural	building component	brick	incomplete					3	
6G	391	ceramic	coarse earthenware: red	structural	building component	brick	incomplete					1	
6G	392	ceramic	coarse earthenware: red	structural	building component	brick	incomplete					3	



## APPENDIX B Artifact Inventory

Prov 2	Prov 3	Material 1	Material 2	Function 1	Function 2	Object	Fragment	Dec 1	Dec 2	Manufacture	Alteration	# of Artifacts	Note
6G	393	ceramic	coarse earthenware: red	structural	building component	brick	incomplete					2	
6G	394	ceramic	coarse earthenware: red	structural	building component	brick	incomplete					1	
6G	395	ceramic	coarse earthenware: red	structural	building component	brick	incomplete					6	
6G	396	ceramic	coarse earthenware: red	structural	building component	brick	incomplete					1	
6G	397	ceramic	coarse earthenware: red	structural	building component	brick	incomplete					2	
6G	398	ceramic	coarse earthenware: red	structural	building component	brick	incomplete					2	
6G	399	ceramic	coarse earthenware: red	structural	building component	brick	incomplete					1	
6G	400	ceramic	coarse earthenware: red	structural	building component	brick	incomplete					1	h=7cm
6G	401	ceramic	coarse earthenware: red	structural	building component	brick	incomplete					1	
6G	402	ceramic	coarse earthenware: red	structural	building component	brick	incomplete					1	h=7cm
6G	403	ceramic	coarse earthenware: red	structural	building component	brick	incomplete					1	
6G	404	ceramic	coarse earthenware: red	structural	building component	brick	incomplete					3	
6G	405	ceramic	coarse earthenware: red	structural	building component	brick	incomplete	impressed: lettering				8	'..NAD../ OTT..' and '...CANADA'
6G	406	ceramic	coarse earthenware: red	structural	building component	brick	incomplete					5	



## APPENDIX B Artifact Inventory

Prov 2	Prov 3	Material 1	Material 2	Function 1	Function 2	Object	Fragment	Dec 1	Dec 2	Manufacture	Alteration	# of Artifacts	Note
6G	407	ceramic	coarse earthenware: red	structural	building component	brick	incomplete					3	
6G	408	ceramic	coarse earthenware: red	structural	building component	brick	incomplete					2	
6G	409	ceramic	coarse earthenware: red	tools/ equipment	agricultural	flower pot	body	glaze: none				1	
6G	409	glass	indeterminate	structural	building component	window pane	incomplete	plain	aqua: light	indeterminate		3	
6G	409	mortar		structural	building component	sample						1	
6G	410	ceramic	coarse earthenware: red	structural	building component	brick	incomplete					1	
6G	411	indeterminate		indeterminate		indeterminate						15	sm spheres, look like marbles, slag like interior, d=1 to 1.5cm
6G	412	ceramic	coarse earthenware: red	tools/ equipment	agricultural	flower pot	body	glaze: none				2	probably flower pot
6G	412	glass	indeterminate	structural	building component	window pane	incomplete	plain	aqua: light	indeterminate		1	
6G	412	metal	iron	indeterminate		container: indeterminate	incomplete					1	rectangular box with holes
6G	413	ceramic	coarse earthenware: red	structural	building component	brick	incomplete					2	
6G	414	ceramic	coarse earthenware: red	structural	building component	brick	incomplete					1	
6G	415	ceramic	coarse earthenware: red	structural	building component	brick	incomplete					1	
6G	417	asphalt		structural	building component	roofing tile	incomplete					5	
6G	417	ceramic	coarse earthenware: red	structural	building component	brick	incomplete					4	
6G	418	metal	iron	structural	hardware	nail	incomplete	indeterminate		indeterminate	corroded	1	nail?



## APPENDIX B Artifact Inventory

Prov 2	Prov 3	Material 1	Material 2	Function 1	Function 2	Object	Fragment	Dec 1	Dec 2	Manufacture	Alteration	# of Artifacts	Note
6G	419	ceramic	coarse earthenware: red	structural	building component	brick	incomplete					2	
6G	421	metal	iron	structural	hardware	nail: common	incomplete	rectangular head		cut		1	
6G	422	ceramic	coarse earthenware: red	structural	building component	brick	incomplete					2	
6G	423	ceramic	coarse earthenware: red	structural	building component	brick	incomplete					3	
6G	424	metal	iron	structural	hardware	nail: common	complete	round head		wire		1	
6G	425	ceramic	vinyl	food/ beverage	tableware	holloware	body	sponged	blue			1	
6G	425	glass	indeterminate	food/ beverage	beverage container	bottle: wine	body	plain	green: dark olive	indeterminate		1	
6G	425	metal	iron	structural	hardware	nail: common	complete	round head		wire		2	
6G	425	metal	iron	structural	hardware	nail: common	incomplete	rectangular head		cut		1	
6G	426	glass	indeterminate	structural	building component	window pane	incomplete	plain	aqua: light	indeterminate		1	
6G	427	ceramic	coarse earthenware: red	structural	building component	brick	incomplete					1	
6G	427	metal	iron	structural	hardware	nail	incomplete	round head		wire	corroded	1	
6G	428	fauna	bone	ecological		mammal	incomplete					1	
6G	429	ceramic	coarse earthenware: red	structural	building component	brick	incomplete					1	
6G	430	ceramic	vitrified white earthenware	food/ beverage	tableware	holloware	body	plain	clear/ colourless			1	
6G	430	glass	indeterminate	indeterminate		bottle: indeterminate	body	plain	aqua: light	indeterminate		1	
6G	430	glass	indeterminate	structural	building component	window pane	incomplete	plain	aqua: light	indeterminate		1	
6G	431	ceramic	vitrified white earthenware	food/ beverage	tableware	saucer	rim	plain	clear/ colourless			1	
6G	431	glass	indeterminate	indeterminate		holloware	body	plain	amber	indeterminate		2	



## APPENDIX B Artifact Inventory

Prov 2	Prov 3	Material 1	Material 2	Function 1	Function 2	Object	Fragment	Dec 1	Dec 2	Manufacture	Alteration	# of Artifacts	Note
6G	432	ceramic	coarse earthenware: red	structural	building component	brick	incomplete					2	
6G	432	ceramic	refined white earthenware	food/ beverage	tableware	indeterminate	body	plain	clear/ colourless			1	
6G	433	metal	iron	indeterminate		wire	incomplete				corroded	2	
6G	434	fauna	bone	ecological		mammal	incomplete				calcined	2	
6G	434	glass	indeterminate	indeterminate		holloware	body	plain	clear/ colourless	indeterminate		1	very thin, could be lamp?
6G	435	metal	iron	indeterminate		pipe: indeterminate	complete					1	l=8cm
6G	436	glass	indeterminate	indeterminate		indeterminate	incomplete	indeterminate	clear/ colourless	indeterminate	melted	1	
6G	436A	ceramic	coarse earthenware: red	structural	building component	brick	incomplete					1	
6G	437	metal	iron	indeterminate		pipe: indeterminate						1	pipe fitting?, with eye, l=7cm

n:\active\2009\1126 - environmental & cultural sciences\09-1126-0022 urbandale corporation\stage1 -2 archaeology\ottawa, on\stage 2 archaeology\report\phase 6\final report\appendix b - artifact inventory\_phase 6.docx

At Golder Associates we strive to be the most respected global group of companies specializing in ground engineering and environmental services. Employee owned since our formation in 1960, we have created a unique culture with pride in ownership, resulting in long-term organizational stability. Golder professionals take the time to build an understanding of client needs and of the specific environments in which they operate. We continue to expand our technical capabilities and have experienced steady growth with employees now operating from offices located throughout Africa, Asia, Australasia, Europe, North America and South America.

Africa	+ 27 11 254 4800
Asia	+ 852 2562 3658
Australasia	+ 61 3 8862 3500
Europe	+ 356 21 42 30 20
North America	+ 1 800 275 3281
South America	+ 55 21 3095 9500

[solutions@golder.com](mailto:solutions@golder.com)  
[www.golder.com](http://www.golder.com)

**Golder Associates Ltd.**  
**32 Steacie Drive**  
**Kanata, Ontario, K2K 2A9**  
**Canada**  
**T: +1 (613) 592 9600**

