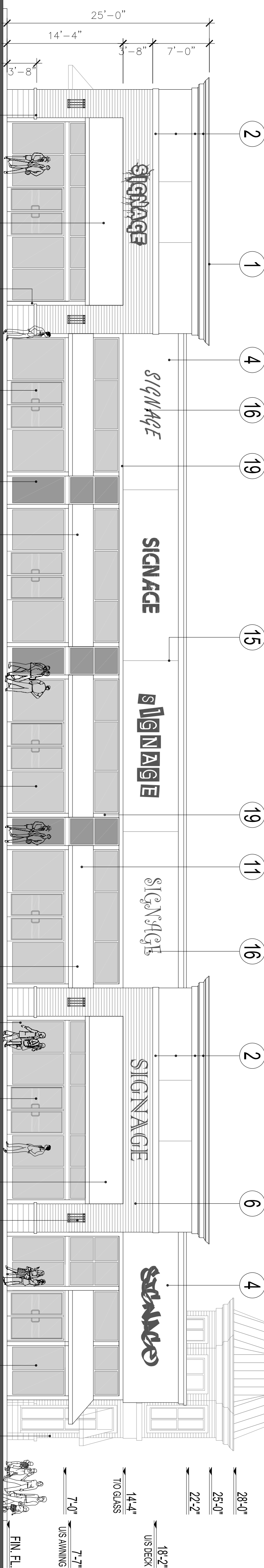
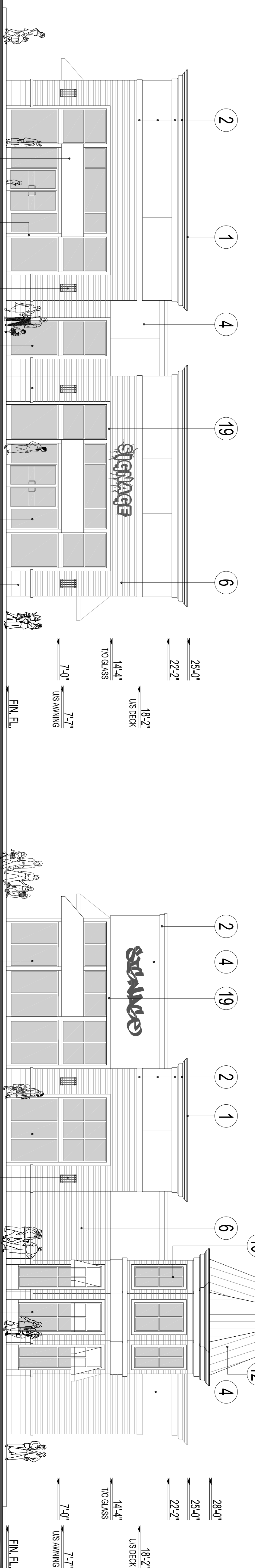


SOUTH (REAR) ELEVATION



NORTH (FRONT) ELEVATION



EAST (SIDE) ELEVATION

WEST (SIDE) ELEVATION

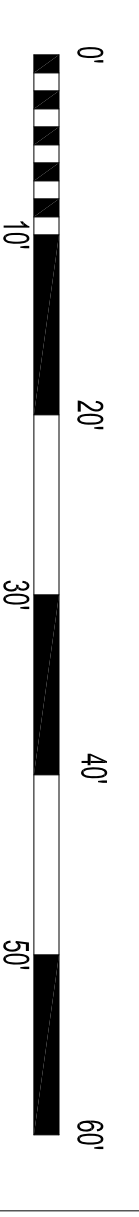
EXTERIOR MATERIALS & FINISHES:
 1- PRE-FINISHED METAL FLASHING - VICWEST - DM-1002 - D-MAX WHITE
 2- E.I.F.S. - DRYVIT - SANDBLAST - #101 - SUPER WHITE
 3- N/A
 4- E.I.F.S. - DRYVIT - SANDBLAST - BENJAMIN MOORE - OC-11

5- N/A
 6- FACE BRICK - HANSON BRICK - TAUPE MATTE
 7- ARCHITECTURAL BLOCK - SHOULDICE - TAPESTRY - ULTRA WHITE
 8- N/A
 9- ARCHITECTURAL SILLCAP - SHOULDICE - TAPESTRY - ULTRA WHITE

10- GLAZING IN ALUMINIUM FRAME - PREVOST - BRONZE ANOSPEC 546
 11- REFLECTIVE SPANDREL GLASS IN ALUMINIUM FRAME - PREVOST - BRONZE ANOSPEC 546
 12- SLOPED METAL ROOF - COLOUR TO MATCH PREVOST - BRONZE ANOSPEC 546
 13- FABRIC AWNINGS - SUNBELLA SUNBR4618 - WALNUT BROWN TWEED
 14- DECORATIVE LIGHT FIXTURE

15- REVEALS
 16- ILLUMINATED SIGNAGE
 17- HOLLOW METAL DOOR - COLOUR TO MATCH #19
 18- PRE-FINISHED OVERHEAD DOOR - COLOUR TO MATCH #19
 19- ALUMINIUM FRAME - COLOUR TO MATCH PREVOST - BRONZE ANOSPEC 546

NOTE: DOOR AND WINDOW LOCATIONS, DIMENSIONS, DETAILS AND BUILDING MATERIALS MAY VARY DEPENDING ON FINAL BUILDING LAYOUT, AND ARE SHOWN FOR INFORMATION PURPOSES ONLY.



COMMERCIAL DEVELOPMENT - BUILDING 'H' - PROPOSED ELEVATIONS
 LIMBANK ROAD & EARL ARMSTRONG ROAD - OTTAWA, ONTARIO

DATE ISSUED : 15-08-14

PROJECT # : 11159

PETROFF
 PETROFF PARTNERSHIP ARCHITECTS

Morguard
 Real Estate Potential Realized.