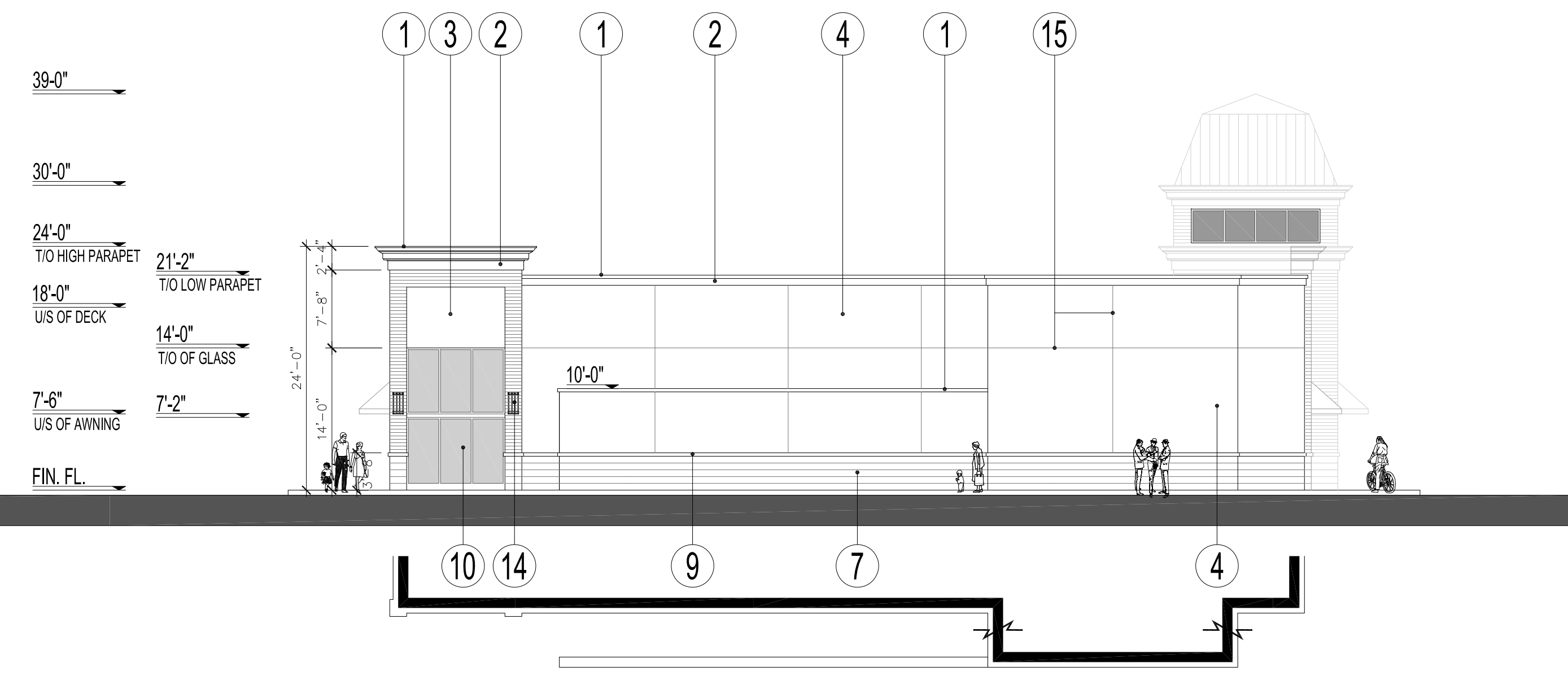
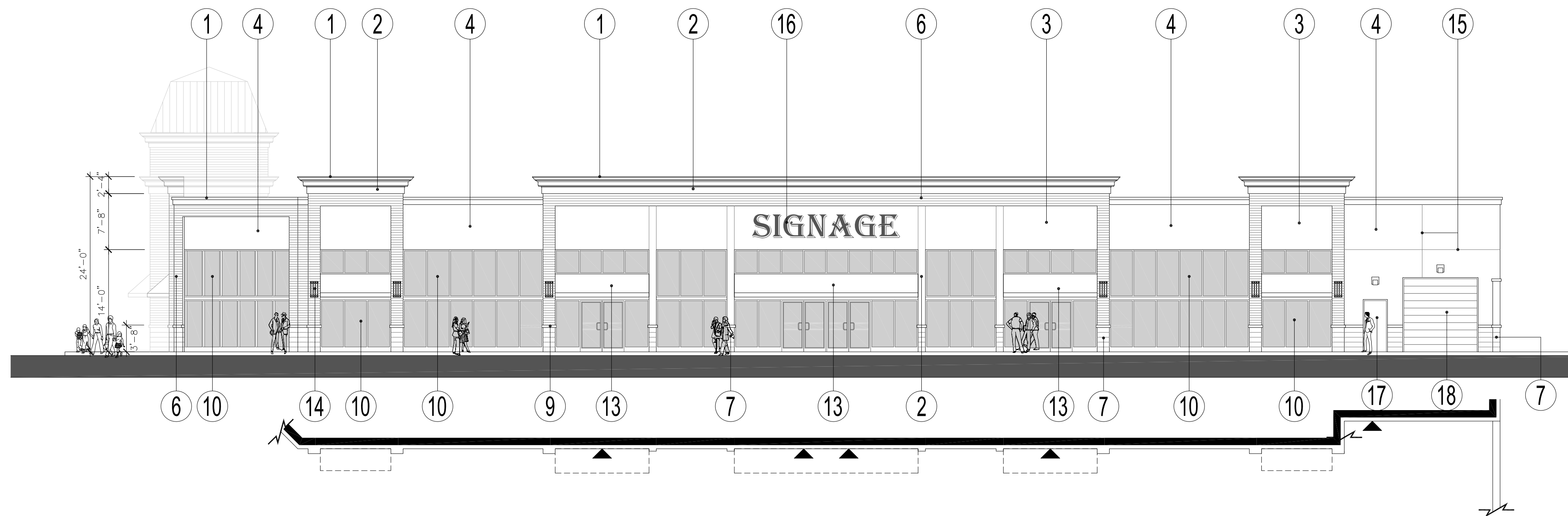


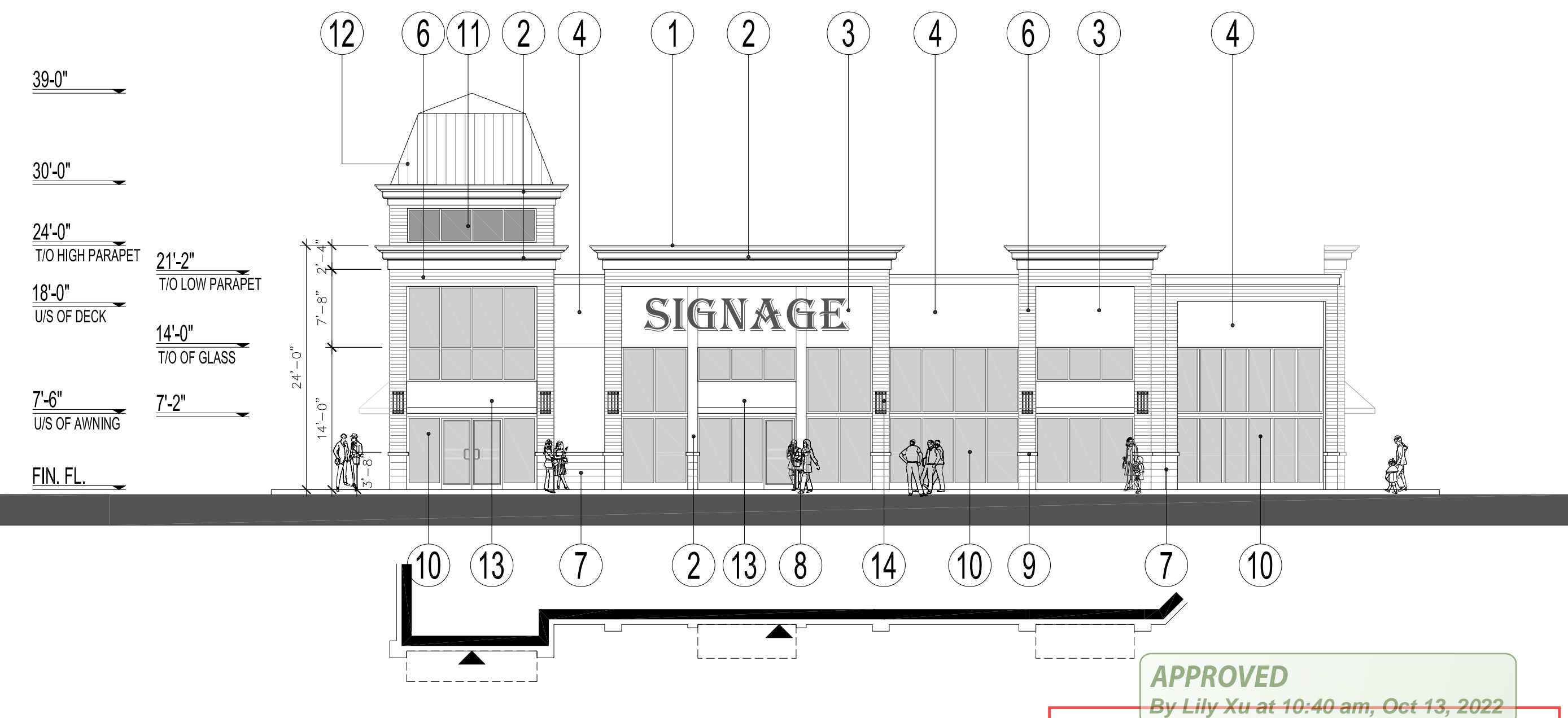
NORTH (REAR) ELEVATION



EAST (SIDE) ELEVATION



SOUTH (FRONT) ELEVATION



WEST (SIDE) ELEVATION

EXTERIOR MATERIALS & FINISHES:

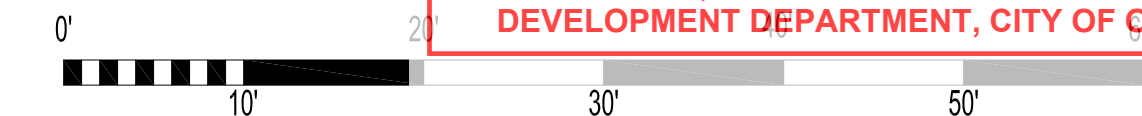
- 1- PRE-FINISHED METAL FLASHING - VICWEST - DM-1002 - D-MAX WHITE
- 2- E.I.F.S. - DRYVIT - SANDBLAST - #101 - SUPER WHITE
- 3- E.I.F.S. - DRYVIT - SANDBLAST - #449 - BUCKSKIN
- 4- E.I.F.S. - DRYVIT - SANDBLAST - #454A STONE GREY
- 5- N/A

- 6- FACE BRICK - HANSON BRICK- SONOMA MATTE
- 7- ARCHITECTURAL BLOCK - SHOULDICE - TAPESTRY - ULTRA WHITE
- 8- N/A
- 9- ARCHITECTURAL SILL/CAP - SHOULDICE - TAPESTRY - ULTRA WHITE
- 10- GLAZING IN ALUMINUM FRAME - PREVOST : BRONZE ANOSPEC 546
- 11- REFLECTIVE SPANDREL GLASS IN ALUMINUM FRAME - PREVOST : BRONZE ANOSPEC 546
- 12- SLOPED METAL ROOF - COLOUR TO MATCH PREVOST : BRONZE ANOSPEC 546

- 13- FABRIC AWNINGS - SUNBRELLA SUNBR4618 - WALNUT BROWN TWEED
- 14- DECORATIVE LIGHT FIXTURE
- 15- REVEALS
- 16- ILLUMINATED SIGNAGE
- 17- HOLLOW METAL DOOR - COLOUR TO MATCH #4
- 18- PRE-FINISHED OVERHEAD DOOR - COLOUR TO MATCH #4
- 19- METAL CANOPY - COLOUR TO MATCH PREVOST : BRONZE ANOSPEC 546

APPROVED
By Lily Xu at 10:40 am, Oct 13, 2022

Lily Xu
LILY XU, MCIP, RPP
MANAGER, DEVELOPMENT REVIEW SOUTH
PLANNING, INFRASTRUCTURE & ECONOMIC
DEVELOPMENT DEPARTMENT, CITY OF OTTAWA



NOTE: DOOR AND WINDOW LOCATIONS, DIMENSIONS, DETAILS AND BUILDING MATERIALS MAY VARY DEPENDING ON FINAL BUILDING LAYOUT, AND ARE SHOWN FOR INFORMATION PURPOSES ONLY.

COMMERCIAL DEVELOPMENT - BUILDING 'C' - PROPOSED ELEVATIONS

LIMEBANK ROAD & EARL ARMSTRONG ROAD - OTTAWA, ONTARIO

DATE ISSUED : 16-11-24

PROJECT # : 11159

