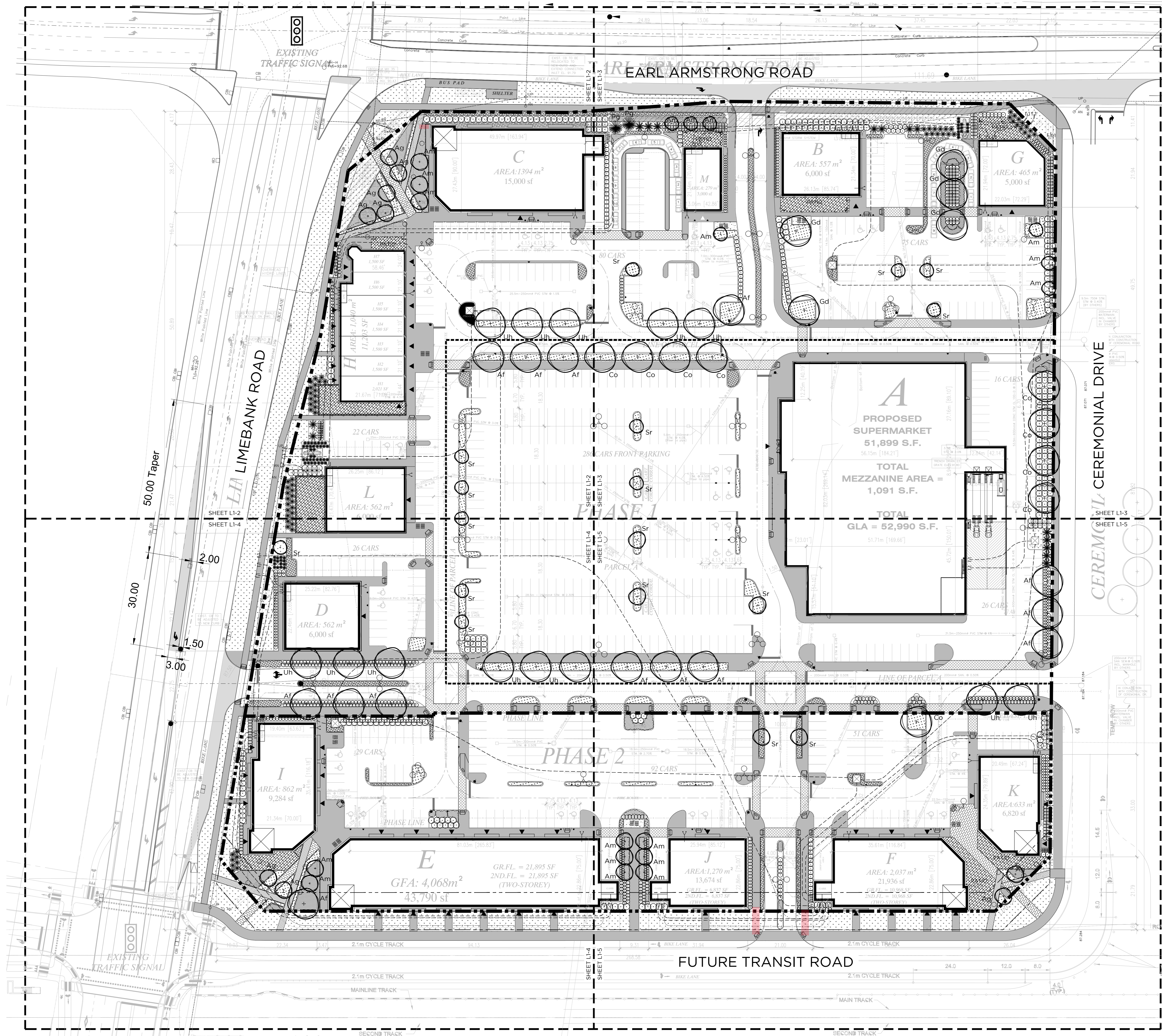
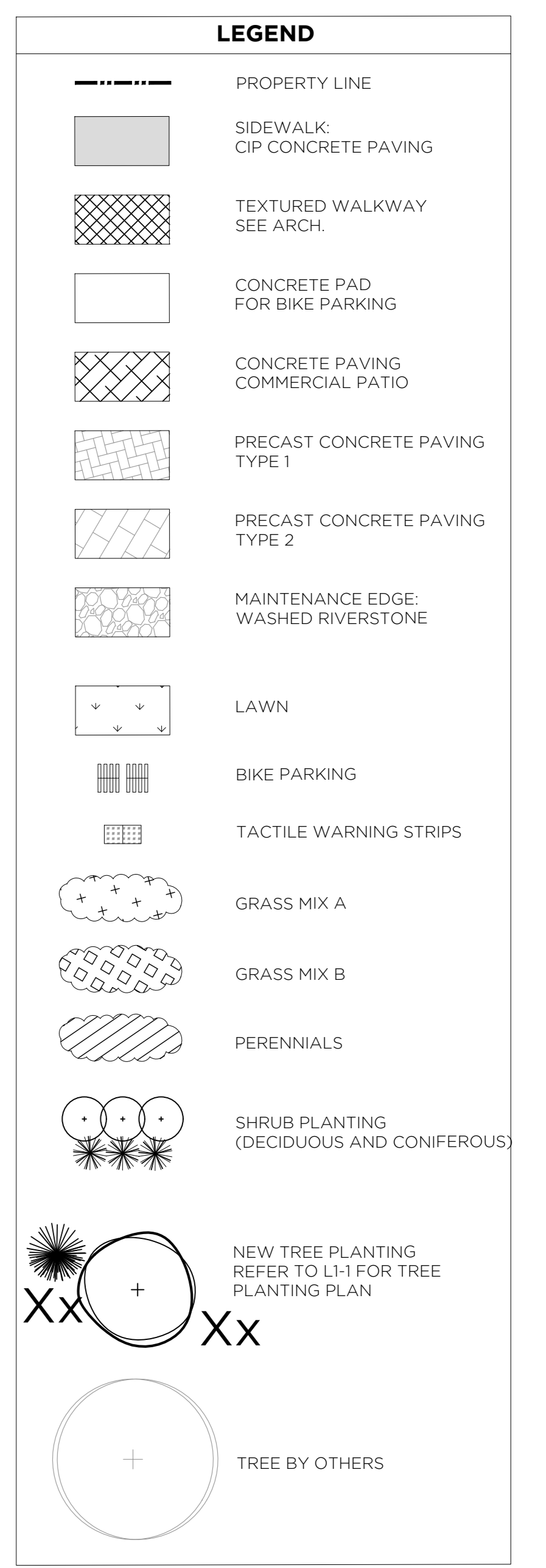


PLANT LIST			
CONIFEROUS TREES			
KEY	QTY	BOTANICAL NAME	COMMON NAME / SIZE / COND.
Jv	14	<i>Juniperus virginiana</i>	Eastern Red Cedar 200 cm HT. / W.B.
Pg	2	<i>Picea glauca</i>	White Spruce 250 cm HT. / W.B.
DECIDUOUS TREES			
Af	14	<i>Acer freemanii</i> 'Autumn Blaze'	Autumn Blaze Maple 60 mm / W.B.
Ag	9	<i>Amelanchier x grandifolia</i> 'Autumn Brilliance'	Autumn Brilliance Serviceberry 50 mm / W.B.
Am	18	<i>Amelanchier laevis</i> 'Spring Flurry'	Spring Flurry Serviceberry 50 mm / W.B.
Co	9	<i>Celtis occidentalis</i>	Common Hackberry 60 mm / W.B.
Gd	5	<i>Gymnocladus dioica</i>	Kentucky Coffee Tree 60 mm / W.B.
SR	17	<i>Syringa reticulata</i>	Japanese Tree Lilac 60 mm / W.B.
Uh	17	<i>Ulmus x 'Homestead'</i>	Holmstead Elm 60 mm / W.B.
SHRUBS			
Ak	74	<i>Aralia cordata</i> 'Sun King'	Golden Japanese Spikenard 3 Gal.
Ao	43	<i>Azalea</i> 'Orchid Lights'	Orchid Lights Azalea 60 cm, 3 Gal.
Ca	61	<i>Ceanothus americanus</i>	New Jersey Tea 50 cm, 3 Gal.
Cf	228	<i>Cornus sericea</i> 'Arctic Fire'	Arctic Fire Dogwood 60 cm, 3 Gal.
Hy	104	<i>Hydrangea arborescens</i> 'Incrediball'	Incrediball Hydrangea 50 cm, 3 Gal.
Jo	47	<i>Juniperus chinensis</i> 'Ontario Green'	Ontario Green Juniper 150 cm / W.B.
Js	49	<i>Juniperus sabina</i>	Savin Juniper 50 cm, 3 Gal.
Jw	68	<i>Juniperus x pfitzeriana</i> 'Wilhelm Pfizer'	Pfitzer Juniper 50 cm, 3 Gal.
Pc	36	<i>Physocarpus opulifolius</i> 'Coppertina'	Coppertina Ninebark 60 cm, 3 Gal.
Pd	67	<i>Physocarpus opulifolius</i> 'Diablo'	Diablo Ninebark 60 cm, 3 Gal.
Pf	54	<i>Potentilla fruticosa</i> 'Goldstar'	Goldstar Potentilla 50 cm, 3 Gal.
Pi	150	<i>Potentilla fruticosa</i> 'Jackman'	Jackman Potentilla 50 cm, 3 Gal.
Po	5	<i>Physocarpus opulifolius</i>	Ninebark 60 cm, 3 Gal.
Pog	38	<i>Physocarpus opulifolius</i> 'Dart's Gold'	Dart's Gold Ninebark 60 cm, 3 Gal.
Pon	335	<i>Physocarpus opulifolius</i> 'Nanus'	Nanus Ninebark 60 cm, 3 Gal.
Ps	72	<i>Physocarpus opulifolius</i> 'Summer Wine'	Summer Wine Ninebark 60 cm, 3 Gal.
Pt	150	<i>Potentilla fruticosa</i> 'Goldfinger'	Goldfinger Potentilla 50 cm, 3 Gal.
Ral	310	<i>Rhus aromatica</i> 'Gro-Low'	Fragrant Sumac 'Gro-Low' 75 cm, 3 Gal.
Sg	30	<i>Spiraea japonica</i> 'Goldflame'	Goldflame Spirea 60 cm, 3 Gal.
Sj	58	<i>Spiraea japonica</i> 'Neon Flash'	Neon Flash Spirea 60 cm, 3 Gal.
Sw	58	<i>Spiraea japonica</i> 'Anthony Waterer'	Anthony Waterer Spirea 60 cm, 3 Gal.
Vc	72	<i>Viburnum cassinoides</i>	Withered 60 cm, 3 Gal.
Vd	36	<i>Viburnum dentatum</i>	Arrowwood 125 cm, 7 Gal.
We	58	<i>Weigela Maroon Swoon</i>	Maroon Swoon Weigela 60 cm, 3 Gal.
Wt	72	<i>Weigela florida</i> 'Wine and Roses'	Wine and Roses Weigela 50 cm, 3 Gal.
PERENNIALS			
Ch	26	<i>Cimifuga racemosa</i> 'Hillside Black Beauty'	Black Bugbane 1 Gal.
Ha	304	<i>Hemerocallis</i> 'Apricot Sparkles'	Apricot Sparkles Daylily 1 Gal.
Hc	134	<i>Hemerocallis</i> 'Early Bird Cardinal'	Early Bird Cardinal Daylily 1 Gal.
Hg	66	<i>Hemerocallis</i> 'Grape Magic'	Grape Magic Daylily 1 Gal.
Hp	133	<i>Hemerocallis</i> 'Purple D'Oro'	Purple D'Oro Daylily 1 Gal.
Hz	66	<i>Hemerocallis</i> 'Shaka Zulu'	Shaka Zulu Daylily 1 Gal.
NF	253	<i>Nepeta x fassenii</i> 'Walkers Low'	Walker's Low Catmint 1 Gal.
GRASS MIXTURE A (POTTED 25% RATIO)			
bg	1878	<i>Bouteloua gracilis</i>	Mosquito Grass 1 Gal.
df	1878	<i>Deschampsia flexuosa</i>	Wavy Hair Grass 1 Gal.
ln	1878	<i>Luzula Nivea</i>	Snowy Woodrush 1 Gal.
sh	1878	<i>Sesleria heufleriana</i>	Blue Green Moor Grass 1 Gal.
GRASS MIXTURE B (POTTED 33% RATIO)			
as	755	<i>Andropogon scoparius</i> 'Blaze'	Blaze Little Bluestem 1 Gal.
ca	755	<i>Calamagrostis Acutiflora</i> 'Karl Forester'	Feather Reed Grass 1 Gal.
sn	755	<i>Sorghastrum nutans</i> 'Indian Steel'	Indian Steel Grass 1 Gal.

- NOTES**
- DESIGN OF WALKWAYS ARE SUBJECT TO AS-BUILT SURVEY INFORMATION AND FUTURE ROAD ALIGNMENTS.
  - REFER TO PLAN ENLARGEMENTS (SHEETS L1-2 - L1-5 TO LOCATE PERENNIAL AND SHRUB PLANTING SPECIES ON PLAN DRAWINGS.



- GENERAL NOTES:**
- DO NOT SCALE DRAWINGS.
  - NOTES ARE APPLICABLE TO ALL DRAWINGS IN THE SET.
  - Fotenn Consultants Inc. IS NOT RESPONSIBLE FOR ACCURACY OF BASE INFORMATION.
  - REFER TO CIVIL ENGINEERING DRAWINGS FOR GRADING & SITE SERVICING INFORMATION.
  - THE CONTRACTOR IS RESPONSIBLE FOR CONFIRMING SITE CONDITIONS AND REPORTING ANY DISCREPANCIES TO THE LANDSCAPE ARCHITECT.
  - THE CONTRACTOR IS RESPONSIBLE FOR CONFIRMING EXACT LOCATIONS OF ALL UNDERGROUND SERVICES AND OBTAINING CLEARANCE FROM ALL APPLICABLE UTILITIES. PROPOSED WORKS FOUND TO BE IN CONFLICT WITH UNDERGROUND SERVICES MAY BE ADJUSTED AT THE DIRECTION OF THE LANDSCAPE ARCHITECT.
  - LANDSCAPE ELEMENTS SHOWN ARE SUBJECT TO THE FINAL LOCATION OF UNDERGROUND SERVICES AND UTILITIES.
  - DO NOT INSTALL TREES ON PROPERTY / LOT LINES OR WITHIN DRAINAGE EASEMENTS.
  - PERFORM WORK IN ACCORDANCE WITH DETAILS AND SPECIFICATIONS.
  - ALL PLANT MATERIAL SHALL BE No. 1 NURSERY STOCK AND SHALL MEET OR EXCEED THE SPECIFICATION OF THE Canadian Standards for Nursery Stock, AS PUBLISHED BY THE Canadian Nursery Landscape Association.
  - SPECIES SUBSTITUTIONS ARE NOT PERMITTED WITHOUT PRIOR WRITTEN APPROVAL OF THE LANDSCAPE ARCHITECT.
  - ALL UN-PAVED SURFACES TO RECEIVE 150mm DEPTH TOPSOIL & SOD.



NO.	DESCRIPTION	DATE
12	SUBMITTED FOR SPA	2022/06/22
11	SUBMITTED FOR SPA	2022/06/02
10	COORDINATION WITH NEW SITE PLAN	2022/05/04
9	REVISED AS FOR REVIEW	2021/01/03
8	REVISED AS PER COMMENTS	2021/02/17
7	SUBMITTED FOR SPA REVISION	2020/07/18
6	SUBMITTED FOR SPA	2020/05/12
5	REVISED FOR REVIEW	2020/08/25
4	REVISED FOR REVIEW	2020/06/15
3	REVISED AS PER COMMENTS	2020/08/19
2	SUBMITTED FOR SPA	2020/04/08
1	FOR REVIEW	2020/03/19

**FOTENN**

PROJECT LOCATION / PROJECT ENDPOINT

**RIVERSIDE SOUTH SHOPPING CENTRE**  
1420 EARL ARMSTRONG ROAD  
OTTAWA, ONTARIO

DRAWING / DESIGN

**LANDSCAPE PLAN OVERALL PLAN**

DESIGNED BY / CONSULTANT: L.M./G.V./E.P./K.A.  
DRAWN BY / DESIGNER: L.M./G.V./E.P./S.T.  
CHECKED BY / VERIFIER: K.A.

SHEET NO. / TOTAL SHEETS: **L1-1**

SCALE: 1:500

**APPROVED**  
By Lily Xu at 4:07 pm, Oct 12, 2022

*Lily Xu*  
LILY XU, MCP, RPP  
MANAGER, DEVELOPMENT REVIEW SOUTH  
PLANNING, INFRASTRUCTURE & ECONOMIC  
DEVELOPMENT DEPARTMENT, CITY OF OTTAWA

**PRELIMINARY**  
NOT FOR CONSTRUCTION

PLANT LIST			
CONIFEROUS TREES			
KEY	QTY	BOTANICAL NAME	COMMON NAME / SIZE / COND.
Jv	14	<i>Juniperus virginiana</i>	Eastern Red Cedar 200 cm HT. / W.B.
Pg	2	<i>Picea glauca</i>	White Spruce 250 cm HT. / W.B.
DECIDUOUS TREES			
Af	14	<i>Acer freemanii</i> 'Autumn Blaze'	Autumn Blaze Maple 60 mm / W.B.
Ag	9	<i>Amelanchier x grandifolia</i> 'Autumn Brilliance'	Autumn Brilliance Serviceberry 50 mm / W.B.
Am	18	<i>Amelanchier laevis</i> 'Spring Flurry'	Spring Flurry Serviceberry 50 mm / W.B.
Co	9	<i>Celtis occidentalis</i>	Common Hackberry 60 mm / W.B.
Gd	5	<i>Gymnocladus dioica</i>	Kentucky Coffee Tree 60 mm / W.B.
SR	17	<i>Syringa reticulata</i>	Japanese Tree Lilac 60 mm / W.B.
Uh	17	<i>Ulmus x 'Homestead'</i>	Holmstead Elm 60 mm / W.B.
SHRUBS			
Ak	74	<i>Aralia cordata</i> 'Sun King'	Golden Japanese Spikenard 3 Gal.
Ao	43	<i>Azalea</i> 'Orchid Lights'	Orchid Lights Azalea 60 cm, 3 Gal.
Ca	61	<i>Ceanothus americanus</i>	New Jersey Tea 50 cm, 3 Gal.
Cf	228	<i>Cornus sericea</i> 'Arctic Fire'	Arctic Fire Dogwood 60 cm, 3 Gal.
Hy	104	<i>Hydrangea arborescens</i> 'Incrediball'	Incrediball Hydrangea 50 cm, 3 Gal.
Jo	47	<i>Juniperus chinensis</i> 'Ontario Green'	Ontario Green Juniper 150 cm / W.B.
Js	49	<i>Juniperus sabina</i>	Savin Juniper 50 cm, 3 Gal.
Jw	68	<i>Juniperus x pfitzeriana</i> 'Wilhelm Pfizer'	Pfizer Juniper 50 cm, 3 Gal.
Pc	36	<i>Physocarpus opulifolius</i> 'Coppertina'	Coppertina Ninebark 60 cm, 3 Gal.
Pd	67	<i>Physocarpus opulifolius</i> 'Diablo'	Diablo Ninebark 60 cm, 3 Gal.
Pf	54	<i>Potentilla fruticosa</i> 'Goldstar'	Goldstar Potentilla 50 cm, 3 Gal.
Pi	150	<i>Potentilla fruticosa</i> 'Jackman'	Jackman Potentilla 50 cm, 3 Gal.
Po	5	<i>Physocarpus opulifolius</i>	Ninebark 60 cm, 3 Gal.
Pog	38	<i>Physocarpus opulifolius</i> 'Dart's Gold'	Dart's Gold Ninebark 60 cm, 3 Gal.
Pon	335	<i>Physocarpus opulifolius</i> 'Nanus'	Nanus Ninebark 60 cm, 3 Gal.
Ps	72	<i>Physocarpus opulifolius</i> 'Summer Wine'	Summer Wine Ninebark 60 cm, 3 Gal.
Pt	150	<i>Potentilla fruticosa</i> 'Goldfinger'	Goldfinger Potentilla 50 cm, 3 Gal.
Ral	310	<i>Rhus aromatica</i> 'Gro-Low'	Fragrant Sumac 75 cm, 3 Gal.
Sg	30	<i>Spirea japonica</i> 'Goldflame'	Goldflame Spirea 60 cm, 3 Gal.
Sj	58	<i>Spirea japonica</i> 'Neon Flash'	Neon Flash Spirea 60 cm, 3 Gal.
Sw	58	<i>Spirea japonica</i> 'Anthony Waterer'	Anthony Waterer Spirea 60 cm, 3 Gal.
Vc	72	<i>Viburnum cassinoides</i>	Witherod 60 cm, 3 Gal.
Vd	36	<i>Viburnum dentatum</i>	Arrowwood 125 cm, 7 Gal.
We	58	<i>Weigela Maroon Swoon</i>	Maroon Swoon Weigela 60 cm, 3 Gal.
Wt	72	<i>Weigela florida</i> 'Wine and Roses'	Wine and Roses Weigela 50 cm, 3 Gal.
PERENNIALS			
Ch	26	<i>Cimicifuga racemosa</i> 'Hillside Black Beauty'	Black Bugbane 1 Gal.
Ha	304	<i>Hemerocallis</i> 'Apricot Sparkles'	Apricot Sparkles Daylily 1 Gal.
Hc	134	<i>Hemerocallis</i> 'Early Bird Cardinal'	Early Bird Cardinal Daylily 1 Gal.
Hg	66	<i>Hemerocallis</i> 'Grape Magic'	Grape Magic Daylily 1 Gal.
Hp	133	<i>Hemerocallis</i> 'Purple D'Oro'	Purple D'Oro Daylily 1 Gal.
Hz	66	<i>Hemerocallis</i> 'Shaka Zulu'	Shaka Zulu Daylily 1 Gal.
Nf	253	<i>Nepeta x fassenii</i> 'Walkers Low'	Walkers Low Catmint 1 Gal.
GRASS MIXTURE A (POTTED 25% RATIO)			
bg	1878	<i>Bouteloua gracilis</i>	Mosquito Grass 1 Gal.
df	1878	<i>Deschampsia flexuosa</i>	Wavy Hair Grass 1 Gal.
ln	1878	<i>Luzula Nivea</i>	Snowy Woodrush 1 Gal.
sh	1878	<i>Sesleria heufleriana</i>	Blue Green Moor Grass 1 Gal.
GRASS MIXTURE B (POTTED 33% RATIO)			
as	755	<i>Andropogon scoparius</i> 'Blaze'	Blaze Little Bluestem 1 Gal.
ca	755	<i>Calamagrostis acutiflora</i> 'Karl Forester'	Feather Reed Grass 1 Gal.
sn	755	<i>Sorghastrum nutans</i> 'Indian Steel'	Indian Steel Grass 1 Gal.

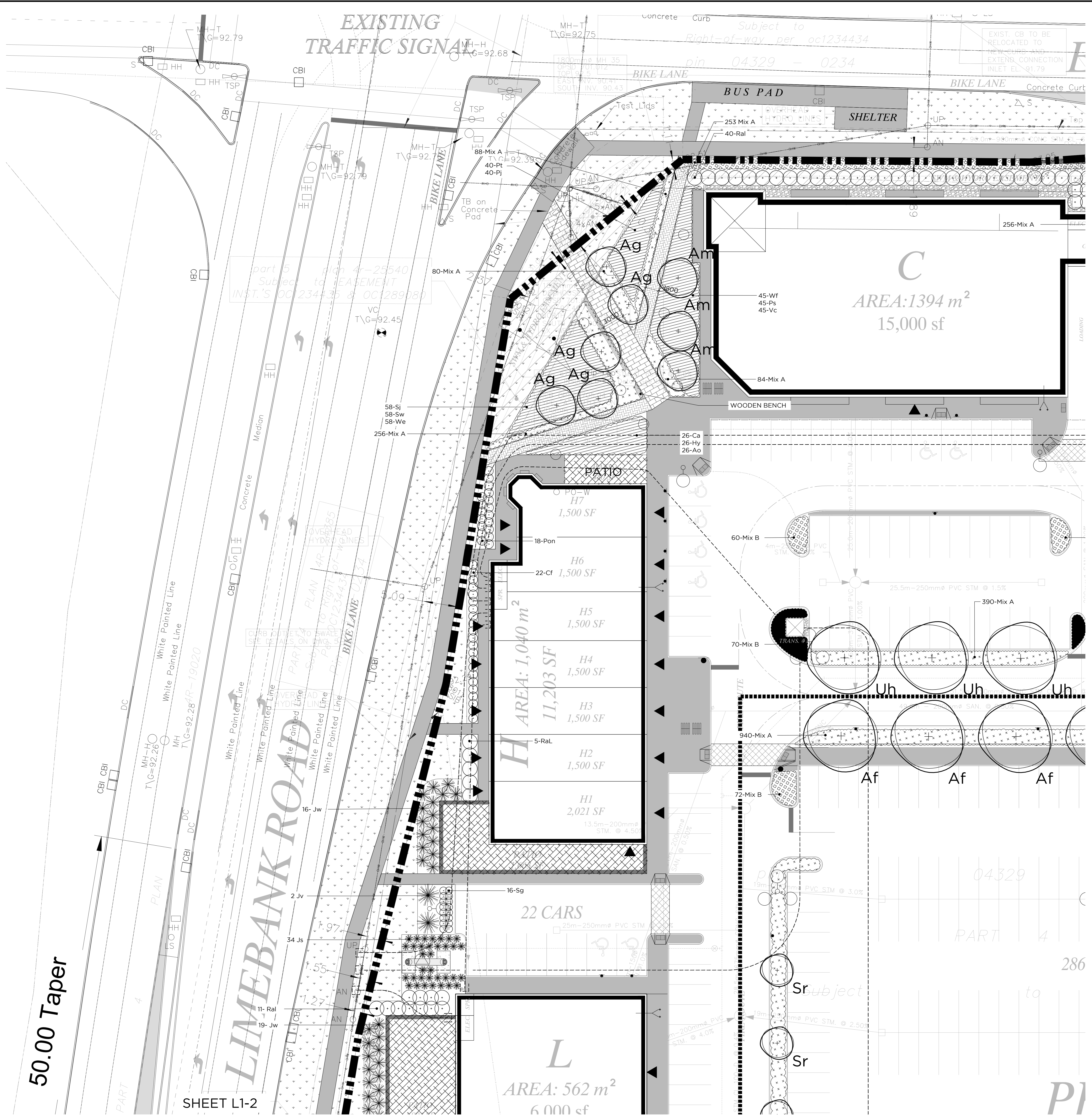
- NOTES**
- DESIGN OF WALKWAYS ARE SUBJECT TO AS-BUILT SURVEY INFORMATION AND FUTURE ROAD ALIGNMENTS.

**APPROVED**  
By Lily Xu at 4:07 pm, Oct 12, 2022

*Lily Xu*

LILY XU, MCIP, RPP  
MANAGER, DEVELOPMENT REVIEW SOUTH  
PLANNING, INFRASTRUCTURE & ECONOMIC  
DEVELOPMENT DEPARTMENT, CITY OF OTTAWA

**PRELIMINARY**  
NOT FOR CONSTRUCTION



- GENERAL NOTES:**
- DO NOT SCALE DRAWINGS.
  - NOTES ARE APPLICABLE TO ALL DRAWINGS IN THE SET.
  - Fotenn Consultants Inc. IS NOT RESPONSIBLE FOR ACCURACY OF BASE INFORMATION.
  - REFER TO CIVIL ENGINEERING DRAWINGS FOR GRADING & SITE SERVICING INFORMATION.
  - THE CONTRACTOR IS RESPONSIBLE FOR CONFIRMING SITE CONDITIONS AND REPORTING ANY DISCREPANCIES TO THE LANDSCAPE ARCHITECT.
  - THE CONTRACTOR IS RESPONSIBLE FOR CONFIRMING EXACT LOCATIONS OF ALL UNDERGROUND SERVICES AND OBTAINING CLEARANCE FROM ALL APPLICABLE UTILITIES. PROPOSED WORKS FOUND TO BE IN CONFLICT WITH UNDERGROUND SERVICES MAY BE ADJUSTED AT THE DIRECTION OF THE LANDSCAPE ARCHITECT.
  - LANDSCAPE ELEMENTS SHOWN ARE SUBJECT TO THE FINAL LOCATION OF UNDERGROUND SERVICES AND UTILITIES.
  - DO NOT INSTALL TREES ON PROPERTY / LOT LINES OR WITHIN DRAINAGE EASEMENTS.
  - PERFORM WORK IN ACCORDANCE WITH DETAILS AND SPECIFICATIONS.
  - ALL PLANT MATERIAL SHALL BE No. 1 NURSERY STOCK AND SHALL MEET OR EXCEED THE SPECIFICATION OF THE Canadian Standards for Nursery Stock, AS PUBLISHED BY THE Canadian Nursery Landscape Association.
  - SPECIES SUBSTITUTIONS ARE NOT PERMITTED WITHOUT PRIOR WRITTEN APPROVAL OF THE LANDSCAPE ARCHITECT.
  - ALL UN-PAVED SURFACES TO RECEIVE 150mm DEPTH TOPSOIL & SOD.

**LEGEND**

	PROPERTY LINE
	SIDEWALK: CIP CONCRETE PAVING
	TEXTURED WALKWAY SEE ARCH.
	CONCRETE PAD FOR BIKE PARKING
	CONCRETE PAVING COMMERCIAL PATIO
	PRECAST CONCRETE PAVING TYPE 1
	PRECAST CONCRETE PAVING TYPE 2
	MAINTENANCE EDGE: WASHED RIVERSTONE
	LAWN
	BIKE PARKING
	TACTILE WARNING STRIPS
	GRASS MIX A
	GRASS MIX B
	PERENNIALS
	SHRUB PLANTING (DECIDUOUS AND CONIFEROUS)
	NEW TREE PLANTING REFER TO LI-1 FOR TREE PLANTING PLAN
	TREE BY OTHERS

12	RESUBMITTED FOR SPA	2022/06/22
11	SUBMITTED FOR SPA	2022/06/22
10	COORDINATION WITH NEW SITE PLAN	2021/05/04
9	REVISED AS FOR REVIEW	2017/01/03
8	REVISED AS PER COMMENTS	2017/02/17
7	SUBMITTED FOR SPA REVIEW	2016/07/18
6	SUBMITTED FOR SPA	2016/05/12
5	REVISED FOR REVIEW	2015/08/25
4	REVISED FOR REVIEW	2015/06/15
3	REVISED AS PER COMMENTS	2014/08/19
2	SUBMITTED FOR SPA	2014/04/08
1	FOR REVIEW	2014/03/19

**FOTENN**

PROJECT LOCATION / PROJECT ENDORSE

**RIVERSIDE SOUTH SHOPPING CENTRE**  
1420 EARL ARMSTRONG ROAD  
OTTAWA, ONTARIO

DRAWING / DESIGN

**LANDSCAPE PLAN  
PART PLAN**

DESIGNED BY: CONQUAN  
DRAWN BY: DESIGNE PAR  
CHECKED BY: VERBEEK  
SCALE: FOUCILLE

SHEET NO. / FEUILLE NO.  
**L1-2**

GRAPHIC SCALE 1:200  
0 5 10m

PLANT LIST				
CONIFEROUS TREES				
KEY	QTY	BOTANICAL NAME	COMMON NAME	SIZE / COND.
Jv	14	<i>Juniperus virginiana</i>	Eastern Red Cedar	200 cm HT. / W.B.
Pg	2	<i>Picea glauca</i>	White Spruce	250 cm HT. / W.B.
DECIDUOUS TREES				
Af	14	<i>Acer freemanii</i> 'Autumn Blaze'	Autumn Blaze Maple	60 mm / W.B.
Ag	9	<i>Amelanchier x grandifolia</i> 'Autumn Brilliance'	Autumn Brilliance Serviceberry	50 mm / W.B.
Am	18	<i>Amelanchier laevis</i> 'Spring Flurry'	Spring Flurry Serviceberry	50 mm / W.B.
Co	9	<i>Celtis occidentalis</i>	Common Hackberry	60 mm / W.B.
Gd	5	<i>Gymnocladus dioica</i>	Kentucky Coffee Tree	60 mm / W.B.
SR	17	<i>Syringa reticulata</i>	Japanese Tree Lilac	60 mm / W.B.
Uh	17	<i>Ulmus x 'Homestead'</i>	Holmstead Elm	60 mm / W.B.
SHRUBS				
Ak	74	<i>Aralia cordata</i> 'Sun King'	Golden Japanese Spikenard	3 Gal.
Ao	43	<i>Azalea</i> 'Orchid Lights'	Orchid Lights Azalea	60 cm, 5 Gal.
Ca	61	<i>Ceanothus americanus</i>	New Jersey Tea	50 cm, 3 Gal.
Cf	228	<i>Cornus sericea</i> 'Arctic Fire'	Arctic Fire Dogwood	60 cm, 3 Gal.
Hy	104	<i>Hydrangea arborescens</i> 'Incrediball'	Incrediball Hydrangea	50 cm, 3 Gal.
Jo	47	<i>Juniperus chinensis</i> 'Ontario Green'	Ontario Green Juniper	150 cm / W.B.
Js	49	<i>Juniperus sabina</i>	Savin Juniper	50 cm, 3 Gal.
Jw	68	<i>Juniperus x pfitzeriana</i> 'Wilhelm Pfitzer'	Pfitzer Juniper	50 cm, 3 Gal.
Pc	36	<i>Physocarpus opulifolius</i> 'Coppertina'	Coppertina Ninebark	60 cm, 3 Gal.
Pd	67	<i>Physocarpus opulifolius</i> 'Diablo'	Diablo Ninebark	60 cm, 3 Gal.
Pf	54	<i>Potentilla fruticosa</i> 'Goldstar'	Goldstar Potentilla	50 cm, 3 Gal.
Pi	150	<i>Potentilla fruticosa</i> 'Jackman'	Jackman Potentilla	50 cm, 3 Gal.
Po	5	<i>Physocarpus opulifolius</i>	Ninebark	60 cm, 3 Gal.
Pog	38	<i>Physocarpus opulifolius</i> 'Dart's Gold'	Dart's Gold Ninebark	60 cm, 3 Gal.
Pon	335	<i>Physocarpus opulifolius</i> 'Nanus'	Nanus Ninebark	60 cm, 3 Gal.
Pt	72	<i>Physocarpus opulifolius</i> 'Summer Wine'	Summer Wine Ninebark	60 cm, 3 Gal.
Ps	150	<i>Potentilla fruticosa</i> 'Goldfinger'	Goldfinger Potentilla	50 cm, 3 Gal.
Ral	310	<i>Rhus aromatica</i> 'Gro-Low'	Fragrant Sumac	75 cm, 3 Gal.
Sg	30	<i>Spirea japonica</i> 'Goldflame'	Goldflame Spirea	60 cm, 3 Gal.
Sj	58	<i>Spirea japonica</i> 'Neon Flash'	Neon Flash Spirea	60 cm, 3 Gal.
Sw	58	<i>Spirea japonica</i> 'Anthony Waterer'	Anthony Waterer Spirea	60 cm, 3 Gal.
Vc	72	<i>Viburnum cassinoides</i>	Withered	60 cm, 3 Gal.
Vd	36	<i>Viburnum dentatum</i>	Arrowwood	125 cm, 7 Gal.
We	58	<i>Weigela Maroon Swoon</i>	Maroon Swoon Weigela	60 cm, 3 Gal.
Wt	72	<i>Weigela florida</i> 'Wine and Roses'	Wine and Roses Weigela	50 cm, 3 Gal.
PERENNIALS				
Ch	26	<i>Cimicifuga racemosa</i> 'Hillside Black Beauty'	Black Bugbane	1 Gal.
Ha	304	<i>Hemerocallis</i> 'Apricot Sparkles'	Apricot Sparkles Daylily	1 Gal.
Hc	134	<i>Hemerocallis</i> 'Early Bird Cardinal'	Early Bird Cardinal Daylily	1 Gal.
Hg	66	<i>Hemerocallis</i> 'Grape Magic'	Grape Magic Daylily	1 Gal.
Hp	133	<i>Hemerocallis</i> 'Purple D'Oro'	Purple D'Oro Daylily	1 Gal.
Hs	66	<i>Hemerocallis</i> 'Shaka Zulu'	Shaka Zulu Daylily	1 Gal.
Nf	253	<i>Nepeta x fassenii</i> 'Walkers Low'	Walkers Low Catmint	1 Gal.
GRASS MIXTURE A (POTTED 25% RATIO)				
bg	1878	<i>Bouteloua gracilis</i>	Mosquito Grass	1 Gal.
df	1878	<i>Deschampsia flexuosa</i>	Wavy Hair Grass	1 Gal.
ln	1878	<i>Luzula Nivea</i>	Snowy Woodrush	1 Gal.
sh	1878	<i>Sesleria heufleriana</i>	Blue Green Moor Grass	1 Gal.
GRASS MIXTURE B (POTTED 33% RATIO)				
as	755	<i>Andropogon scoparius</i> 'Blaze'	Blaze Little Bluestem	1 Gal.
ca	755	<i>Calamagrostis Acutiflora</i> 'Karl Forester'	Feather Reed Grass	1 Gal.
sn	755	<i>Sorghastrum nutans</i> 'Indian Steel'	Indian Steel Grass	1 Gal.

NOTES  
1. DESIGN OF WALKWAYS ARE SUBJECT TO AS-BUILT SURVEY INFORMATION AND FUTURE ROAD ALIGNMENTS.

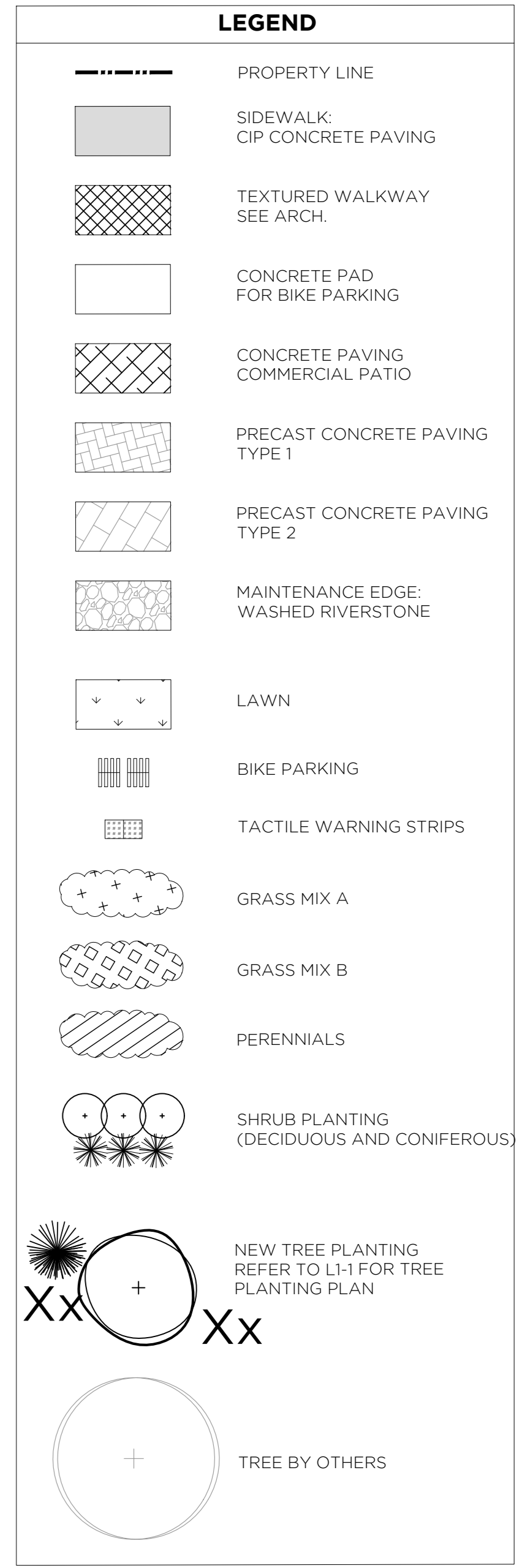
APPROVED  
By Lily Xu at 4:08 pm, Oct 12, 2022

LILY XU, MCIP, RPP  
MANAGER, DEVELOPMENT REVIEW SOUTH  
PLANNING, INFRASTRUCTURE & ECONOMIC  
DEVELOPMENT DEPARTMENT, CITY OF OTTAWA

PRELIMINARY  
NOT FOR CONSTRUCTION



- GENERAL NOTES:
- DO NOT SCALE DRAWINGS.
  - NOTES ARE APPLICABLE TO ALL DRAWINGS IN THE SET.
  - Fotenn Consultants Inc. IS NOT RESPONSIBLE FOR ACCURACY OF BASE INFORMATION.
  - REFER TO CIVIL ENGINEERING DRAWINGS FOR GRADING & SITE SERVICING INFORMATION.
  - THE CONTRACTOR IS RESPONSIBLE FOR CONFIRMING SITE CONDITIONS AND REPORTING ANY DISCREPANCIES TO THE LANDSCAPE ARCHITECT.
  - THE CONTRACTOR IS RESPONSIBLE FOR CONFIRMING EXACT LOCATIONS OF ALL UNDERGROUND SERVICES AND OBTAINING CLEARANCE FROM ALL APPLICABLE UTILITIES. PROPOSED WORKS FOUND TO BE IN CONFLICT WITH UNDERGROUND SERVICES MAY BE ADJUSTED AT THE DIRECTION OF THE LANDSCAPE ARCHITECT.
  - LANDSCAPE ELEMENTS SHOWN ARE SUBJECT TO THE FINAL LOCATION OF UNDERGROUND SERVICES AND UTILITIES.
  - DO NOT INSTALL TREES ON PROPERTY / LOT LINES OR WITHIN DRAINAGE EASEMENTS.
  - PERFORM WORK IN ACCORDANCE WITH DETAILS AND SPECIFICATIONS.
  - ALL PLANT MATERIAL SHALL BE No. 1 NURSERY STOCK AND SHALL MEET OR EXCEED THE SPECIFICATION OF THE Canadian Standards for Nursery Stock, AS PUBLISHED BY THE Canadian Nursery Landscape Association.
  - SPECIES SUBSTITUTIONS ARE NOT PERMITTED WITHOUT PRIOR WRITTEN APPROVAL OF THE LANDSCAPE ARCHITECT.
  - ALL UN-PAVED SURFACES TO RECEIVE 150mm DEPTH TOPSOIL & SOD.



NO.	DESCRIPTION	DATE
12	RESUBMITTED FOR SPA	2022/06/02
11	SUBMITTED FOR SPA	2022/06/02
10	COORDINATION WITH NEW SITE PLAN	2022/05/04
9	REVISED AS FOR REVIEW	2017/01/03
8	REVISED AS PER COMMENTS	2017/02/07
7	SUBMITTED FOR SPA REVISI	2016/07/18
6	SUBMITTED FOR SPA	2016/05/12
5	REVISED FOR REVIEW	2015/08/25
4	REVISED FOR REVIEW	2015/06/15
3	REVISED AS PER COMMENTS	2014/08/19
2	SUBMITTED FOR SPA	2014/04/08
1	FOR REVIEW	2014/03/10

**FOTENN**

PROJECT LOCATION / PROJECT ENDPOINT  
**RIVERSIDE SOUTH SHOPPING CENTRE**  
1420 EARL ARMSTRONG ROAD  
OTTAWA, ONTARIO

DRAWING / DESIGN  
**LANDSCAPE PLAN PART PLAN**

DESIGNED BY: GONGYU WANG  
DRAWN BY: DESHAYE PARR  
CHECKED BY: VERONIQUE PARR  
SCALE: 1:200

SHEET NO. / TOTAL SHEETS  
**L1-3**

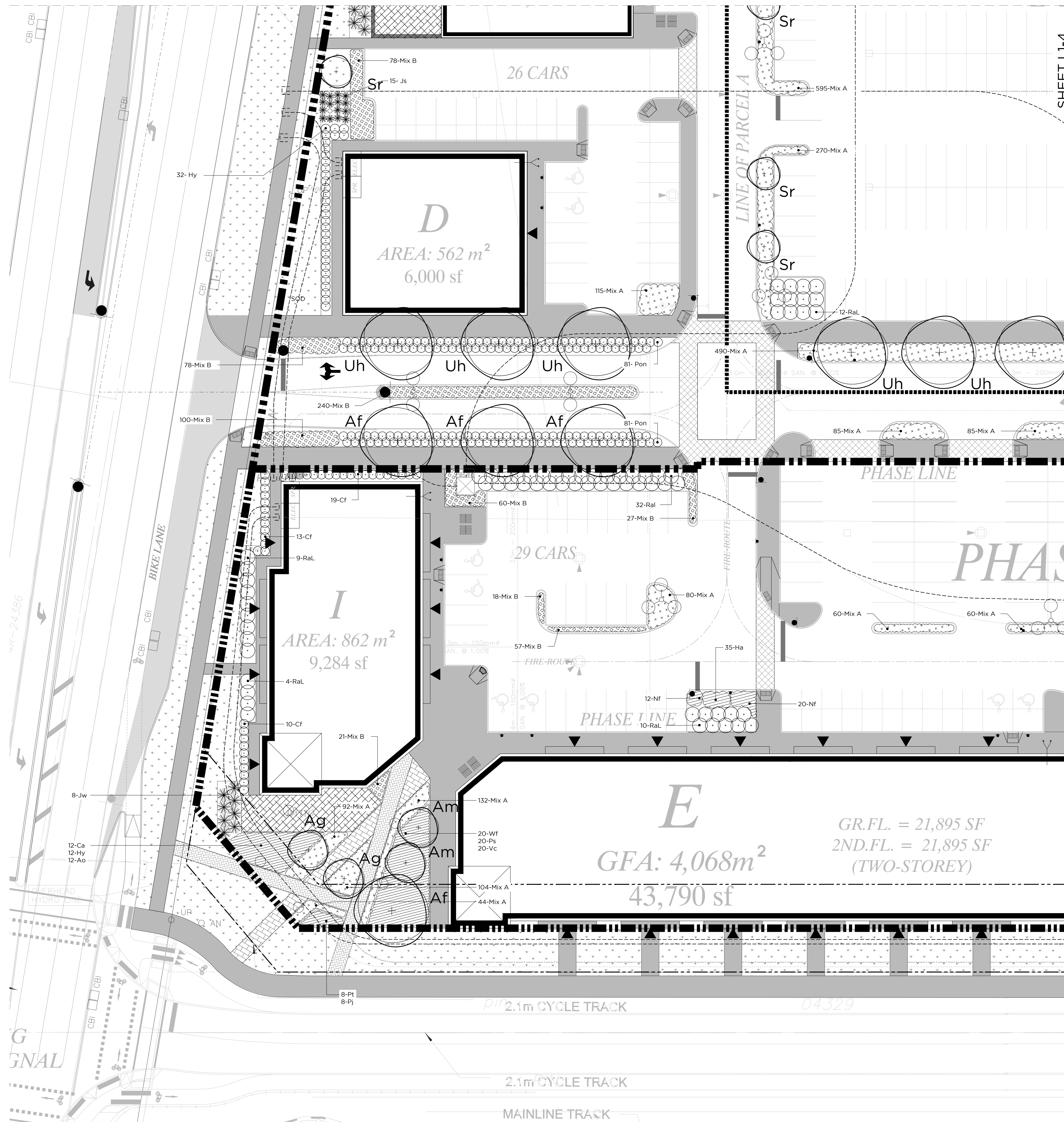
PLANT LIST			
CONIFEROUS TREES			
KEY	QTY	BOTANICAL NAME	COMMON NAME / SIZE / COND.
Jv	14	<i>Juniperus virginiana</i>	Eastern Red Cedar 200 cm HT. / W.B.
Pg	2	<i>Picea glauca</i>	White Spruce 250 cm HT. / W.B.
DECIDUOUS TREES			
Af	14	<i>Acer freemanii</i> 'Autumn Blaze'	Autumn Blaze Maple 60 mm / W.B.
Ag	9	<i>Amelanchier x grandifolia</i> 'Autumn Brilliance'	Autumn Brilliance Serviceberry 50 mm / W.B.
Am	18	<i>Amelanchier laevis</i> 'Spring Flurry'	Spring Flurry Serviceberry 50 mm / W.B.
Co	9	<i>Celtis occidentalis</i>	Common Hackberry 60 mm / W.B.
Gd	5	<i>Gymnocladus dioica</i>	Kentucky Coffee Tree 60 mm / W.B.
SR	17	<i>Syringa reticulata</i>	Japanese Tree Lilac 60 mm / W.B.
Uh	17	<i>Ulmus x 'Homestead'</i>	Holmstead Elm 60 mm / W.B.
SHRUBS			
Ak	74	<i>Aralia cordata</i> 'Sun King'	Golden Japanese Spikenard 3 Gal.
Ao	43	<i>Azalea</i> 'Orchid Lights'	Orchid Lights Azalea 60 cm, 5 Gal.
Ca	61	<i>Ceanothus americanus</i>	New Jersey Tea 50 cm, 3 Gal.
Cf	228	<i>Cornus sericea</i> 'Arctic Fire'	Arctic Fire Dogwood 60 cm, 3 Gal.
Hy	104	<i>Hydrangea arborescens</i> 'Incrediball'	Incrediball Hydrangea 50 cm, 3 Gal.
Jo	47	<i>Juniperus chinensis</i> 'Ontario Green'	Ontario Green Juniper 150 cm / W.B.
Js	49	<i>Juniperus sabina</i>	Savin Juniper 50 cm, 3 Gal.
Jw	68	<i>Juniperus x pfitzeriana</i> 'Wilhelm Pfitzer'	Pfitzer Juniper 50 cm, 3 Gal.
Pc	36	<i>Physocarpus opulifolius</i> 'Coppertina'	Coppertina Ninebark 60 cm, 3 Gal.
Pd	67	<i>Physocarpus opulifolius</i> 'Diablo'	Diablo Ninebark 60 cm, 3 Gal.
Pf	54	<i>Potentilla fruticosa</i> 'Goldstar'	Goldstar Potentilla 50 cm, 3 Gal.
Pi	150	<i>Potentilla fruticosa</i> 'Jackman'	Jackman Potentilla 50 cm, 3 Gal.
Po	5	<i>Physocarpus opulifolius</i>	Ninebark 60 cm, 3 Gal.
Pog	38	<i>Physocarpus opulifolius</i> 'Dart's Gold'	Dart's Gold Ninebark 60 cm, 3 Gal.
Pon	335	<i>Physocarpus opulifolius</i> 'Nanus'	Nanus Ninebark 60 cm, 3 Gal.
Ps	72	<i>Physocarpus opulifolius</i> 'Summer Wine'	Summer Wine Ninebark 60 cm, 3 Gal.
Pt	150	<i>Potentilla fruticosa</i> 'Goldfinger'	Goldfinger Potentilla 50 cm, 3 Gal.
Ral	310	<i>Rhus aromatica</i> 'Gro-Low'	Fragrant Sumac 'Gro-Low' 75 cm, 3 Gal.
Sg	30	<i>Spiraea japonica</i> 'Goldflame'	Goldflame Spirea 60 cm, 3 Gal.
Sj	58	<i>Spiraea japonica</i> 'Neon Flash'	Neon Flash Spirea 60 cm, 3 Gal.
Sw	58	<i>Spiraea japonica</i> 'Anthony Waterer'	Anthony Waterer Spirea 60 cm, 3 Gal.
Vc	72	<i>Viburnum cassinoides</i>	Witherod 60 cm, 3 Gal.
Vd	36	<i>Viburnum dentatum</i>	Arrowwood 125 cm, 7 Gal.
We	58	<i>Weigela Maroon Swoon</i>	Maroon Swoon Weigela 60 cm, 3 Gal.
Wt	72	<i>Weigela florida</i> 'Wine and Roses'	Wine and Roses Weigela 50 cm, 3 Gal.
PERENNIALS			
Ch	26	<i>Cimicifuga racemosa</i> 'Hillside Black Beauty'	Black Bugbane 1 Gal.
Ha	304	<i>Hemerocallis</i> 'Apricot Sparkles'	Apricot Sparkles Daylily 1 Gal.
Hc	134	<i>Hemerocallis</i> 'Early Bird Cardinal'	Early Bird Cardinal Daylily 1 Gal.
Hg	66	<i>Hemerocallis</i> 'Grape Magic'	Grape Magic Daylily 1 Gal.
Hp	133	<i>Hemerocallis</i> 'Purple D'Oro'	Purple D'Oro Daylily 1 Gal.
Hz	66	<i>Hemerocallis</i> 'Shaka Zulu'	Shaka Zulu Daylily 1 Gal.
Nf	253	<i>Nepeta x fassenii</i> 'Walkers Low'	Walkers Low Catmint 1 Gal.
GRASS MIXTURE A (POTTED 25% RATIO)			
bg	1878	<i>Bouteloua gracilis</i>	Mosquito Grass 1 Gal.
df	1878	<i>Deschampsia flexuosa</i>	Wavy Hair Grass 1 Gal.
ln	1878	<i>Luzula Nivea</i>	Snowy Woodrush 1 Gal.
sh	1878	<i>Sesleria heufleriana</i>	Blue Green Moor Grass 1 Gal.
GRASS MIXTURE B (POTTED 33% RATIO)			
as	755	<i>Andropogon scoparius</i> 'Blaze'	Blaze Little Bluestem 1 Gal.
ca	755	<i>Calamagrostis acutiflora</i> 'Karl Forester'	Feather Reed Grass 1 Gal.
sn	755	<i>Sorghastrum nutans</i> 'Indian Steel'	Indian Steel Grass 1 Gal.

- NOTES
- DESIGN OF WALKWAYS ARE SUBJECT TO AS-BUILT SURVEY INFORMATION AND FUTURE ROAD ALIGNMENTS.

APPROVED  
By Lily Xu at 4:08 pm, Oct 12, 2022

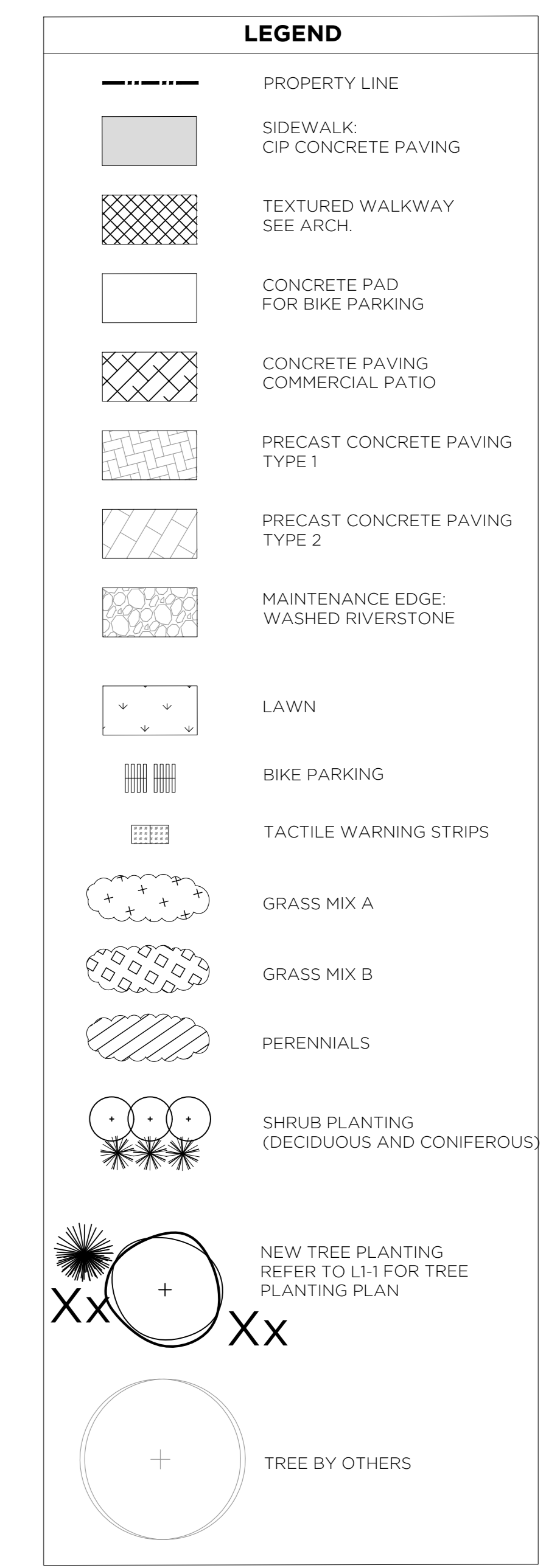
*Lily Xu*  
LILY XU, MCIP, RPP  
MANAGER, DEVELOPMENT REVIEW SOUTH  
PLANNING, INFRASTRUCTURE & ECONOMIC  
DEVELOPMENT DEPARTMENT, CITY OF OTTAWA

PRELIMINARY  
NOT FOR CONSTRUCTION



SHEET L1-4

- GENERAL NOTES:
- DO NOT SCALE DRAWINGS.
  - NOTES ARE APPLICABLE TO ALL DRAWINGS IN THE SET.
  - Fotenn Consultants Inc. IS NOT RESPONSIBLE FOR ACCURACY OF BASE INFORMATION.
  - REFER TO CIVIL ENGINEERING DRAWINGS FOR GRADING & SITE SERVICING INFORMATION.
  - THE CONTRACTOR IS RESPONSIBLE FOR CONFIRMING SITE CONDITIONS AND REPORTING ANY DISCREPANCIES TO THE LANDSCAPE ARCHITECT.
  - THE CONTRACTOR IS RESPONSIBLE FOR CONFIRMING EXACT LOCATIONS OF ALL UNDERGROUND SERVICES AND OBTAINING CLEARANCE FROM ALL APPLICABLE UTILITIES. PROPOSED WORKS FOUND TO BE IN CONFLICT WITH UNDERGROUND SERVICES MAY BE ADJUSTED AT THE DIRECTION OF THE LANDSCAPE ARCHITECT.
  - LANDSCAPE ELEMENTS SHOWN ARE SUBJECT TO THE FINAL LOCATION OF UNDERGROUND SERVICES AND UTILITIES.
  - DO NOT INSTALL TREES ON PROPERTY / LOT LINES OR WITHIN DRAINAGE EASEMENTS.
  - PERFORM WORK IN ACCORDANCE WITH DETAILS AND SPECIFICATIONS.
  - ALL PLANT MATERIAL SHALL BE No. 1 NURSERY STOCK AND SHALL MEET OR EXCEED THE SPECIFICATION OF THE Canadian Standards for Nursery Stock, AS PUBLISHED BY THE Canadian Nursery Landscape Association.
  - SPECIES SUBSTITUTIONS ARE NOT PERMITTED WITHOUT PRIOR WRITTEN APPROVAL OF THE LANDSCAPE ARCHITECT.
  - ALL UN-PAVED SURFACES TO RECEIVE 150mm DEPTH TOPSOIL & SOD.



12	RESUBMITTED FOR SPA	2022/06/22
11	SUBMITTED FOR SPA	2022/06/02
10	COORDINATION WITH NEW SITE PLAN	2021/05/04
9	REVISED AS FOR REVIEW	2017/01/03
8	REVISED AS PER COMMENTS	2017/02/17
7	SUBMITTED FOR SPA REVISED	2016/07/18
6	SUBMITTED FOR SPA	2016/05/12
5	REVISED FOR REVIEW	2015/08/25
4	REVISED FOR REVIEW	2015/06/15
3	REVISED AS PER COMMENTS	2014/08/19
2	SUBMITTED FOR SPA	2014/04/08
1	FOR REVIEW	2014/03/19
REVISION NUMBER	DESCRIPTION / DATE	DATE
1	BASELINE / FAT BALLANT	2014/03/19

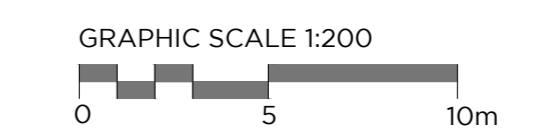
FOTENN



PROJECT / LOCATION / PROJECT / ENDORSE  
**RIVERSIDE SOUTH SHOPPING CENTRE**  
1420 EARL ARMSTRONG ROAD  
OTTAWA, ONTARIO

DRAWING / DESIGN  
**LANDSCAPE PLAN PART PLAN**

DESIGNED BY / CONSULTANT	L.M./S.V./E.P./K.A.	SHEET NO. / TOTAL SHEETS	L1-4
DRAWN BY / DESIGN PART	L.M./S.V./E.P./S.T.		
CHECKED BY / REVIEWER	K.A.		
SCALE / ECHELLE	1:200		



PLANT LIST				
CONIFEROUS TREES				
KEY	QTY	BOTANICAL NAME	COMMON NAME	SIZE / COND.
Jv	14	<i>Juniperus virginiana</i>	Eastern Red Cedar	200 cm HT. / W.B.
Pg	2	<i>Picea glauca</i>	White Spruce	250 cm HT. / W.B.
DECIDUOUS TREES				
Af	14	<i>Acer freemanii</i> 'Autumn Blaze'	Autumn Blaze Maple	60 mm / W.B.
Ag	9	<i>Amelanchier x grandifolia</i> 'Autumn Brilliance'	Autumn Brilliance Serviceberry	50 mm / W.B.
Am	18	<i>Amelanchier laevis</i> 'Spring Flurry'	Spring Flurry Serviceberry	50 mm / W.B.
Co	9	<i>Celtis occidentalis</i>	Common Hackberry	60 mm / W.B.
Gd	5	<i>Gymnocladus dioica</i>	Kentucky Coffee Tree	60 mm / W.B.
SR	17	<i>Syringa reticulata</i>	Japanese Tree Lilac	60 mm / W.B.
Uh	17	<i>Ulmus x 'Homestead'</i>	Holmstead Elm	60 mm / W.B.
SHRUBS				
Ak	74	<i>Aralia cordata</i> 'Sun King'	Golden Japanese Spikenard	3 Gal.
Ao	43	<i>Azalea</i> 'Orchid Lights'	Orchid Lights Azalea	60 cm, 5 Gal.
Ca	61	<i>Ceanothus americanus</i>	New Jersey Tea	50 cm, 3 Gal.
Cf	228	<i>Cornus sericea</i> 'Arctic Fire'	Arctic Fire Dogwood	60 cm, 3 Gal.
Hy	104	<i>Hydrangea arborescens</i> 'Incrediball'	Incrediball Hydrangea	50 cm, 3 Gal.
Jo	47	<i>Juniperus chinensis</i> 'Ontario Green'	Ontario Green Juniper	150 cm / W.B.
Js	49	<i>Juniperus sabina</i>	Savin Juniper	50 cm, 3 Gal.
Jw	68	<i>Juniperus x pfitzeriana</i> 'Wilhelm Pfizer'	Pfizer Juniper	50 cm, 3 Gal.
Pc	36	<i>Physocarpus opulifolius</i> 'Coppertina'	Coppertina Ninebark	60 cm, 3 Gal.
Pd	67	<i>Physocarpus opulifolius</i> 'Diablo'	Diablo Ninebark	60 cm, 3 Gal.
PF	54	<i>Potentilla fruticosa</i> 'Goldstar'	Goldstar Potentilla	50 cm, 3 Gal.
PI	150	<i>Potentilla fruticosa</i> 'Jackman'	Jackman Potentilla	50 cm, 3 Gal.
Po	5	<i>Physocarpus opulifolius</i>	Ninebark	60 cm, 3 Gal.
Pog	38	<i>Physocarpus opulifolius</i> 'Dart's Gold'	Dart's Gold Ninebark	60 cm, 3 Gal.
Pon	335	<i>Physocarpus opulifolius</i> 'Nanus'	Nanus Ninebark	60 cm, 3 Gal.
Ps	72	<i>Physocarpus opulifolius</i> 'Summer Wine'	Summer Wine Ninebark	60 cm, 3 Gal.
PT	150	<i>Potentilla fruticosa</i> 'Goldfinger'	Goldfinger Potentilla	50 cm, 3 Gal.
Raf	310	<i>Rhus aromatica</i> 'Gro-Low'	Fragrant Sumac	75 cm, 3 Gal.
Rg	30	<i>Spiraea japonica</i> 'Goldflame'	Goldflame Spirea	60 cm, 3 Gal.
Sj	58	<i>Spiraea japonica</i> 'Neon Flash'	Neon Flash Spirea	60 cm, 3 Gal.
Sw	58	<i>Spiraea japonica</i> 'Anthony Waterer'	Anthony Waterer Spirea	60 cm, 3 Gal.
Vc	72	<i>Viburnum cassinoides</i>	Withered	60 cm, 3 Gal.
Vd	36	<i>Viburnum dentatum</i>	Arrowwood	125 cm, 7 Gal.
We	58	<i>Weigela Maroon Swoon</i>	Maroon Swoon Weigela	60 cm, 3 Gal.
Wt	72	<i>Weigela florida</i> 'Wine and Roses'	Wine and Roses Weigela	50 cm, 3 Gal.
PERENNIALS				
Ch	26	<i>Cimifuga racemosa</i> 'Hillside Black Beauty'	Black Bugbane	1 Gal.
Ha	304	<i>Hemerocallis</i> 'Apricot Sparkles'	Apricot Sparkles Daylily	1 Gal.
Hc	134	<i>Hemerocallis</i> 'Early Bird Cardinal'	Early Bird Cardinal Daylily	1 Gal.
Hg	66	<i>Hemerocallis</i> 'Grape Magic'	Grape Magic Daylily	1 Gal.
Hp	133	<i>Hemerocallis</i> 'Purple D'Oro'	Purple D'Oro Daylily	1 Gal.
Hz	66	<i>Hemerocallis</i> 'Shaka Zulu'	Shaka Zulu Daylily	1 Gal.
Nf	253	<i>Nepeta x fassenii</i> 'Walkers Low'	Walker's Low Catmint	1 Gal.
GRASS MIXTURE A (POTTED 25% RATIO)				
bg	1878	<i>Bouteloua gracilis</i>	Mosquito Grass	1 Gal.
df	1878	<i>Deschampsia flexuosa</i>	Wavy Hair Grass	1 Gal.
ln	1878	<i>Luzula Nivea</i>	Snowy Woodrush	1 Gal.
sh	1878	<i>Sesleria heufleriana</i>	Blue Green Moor Grass	1 Gal.
GRASS MIXTURE B (POTTED 33% RATIO)				
as	755	<i>Andropogon scoparius</i> 'Blaze'	Blaze Little Bluestem	1 Gal.
ca	755	<i>Calamagrostis Acutiflora</i> 'Karl Forster'	Feather Reed Grass	1 Gal.
sn	755	<i>Sorghastrum nutans</i> 'Indian Steel'	Indian Steel Grass	1 Gal.

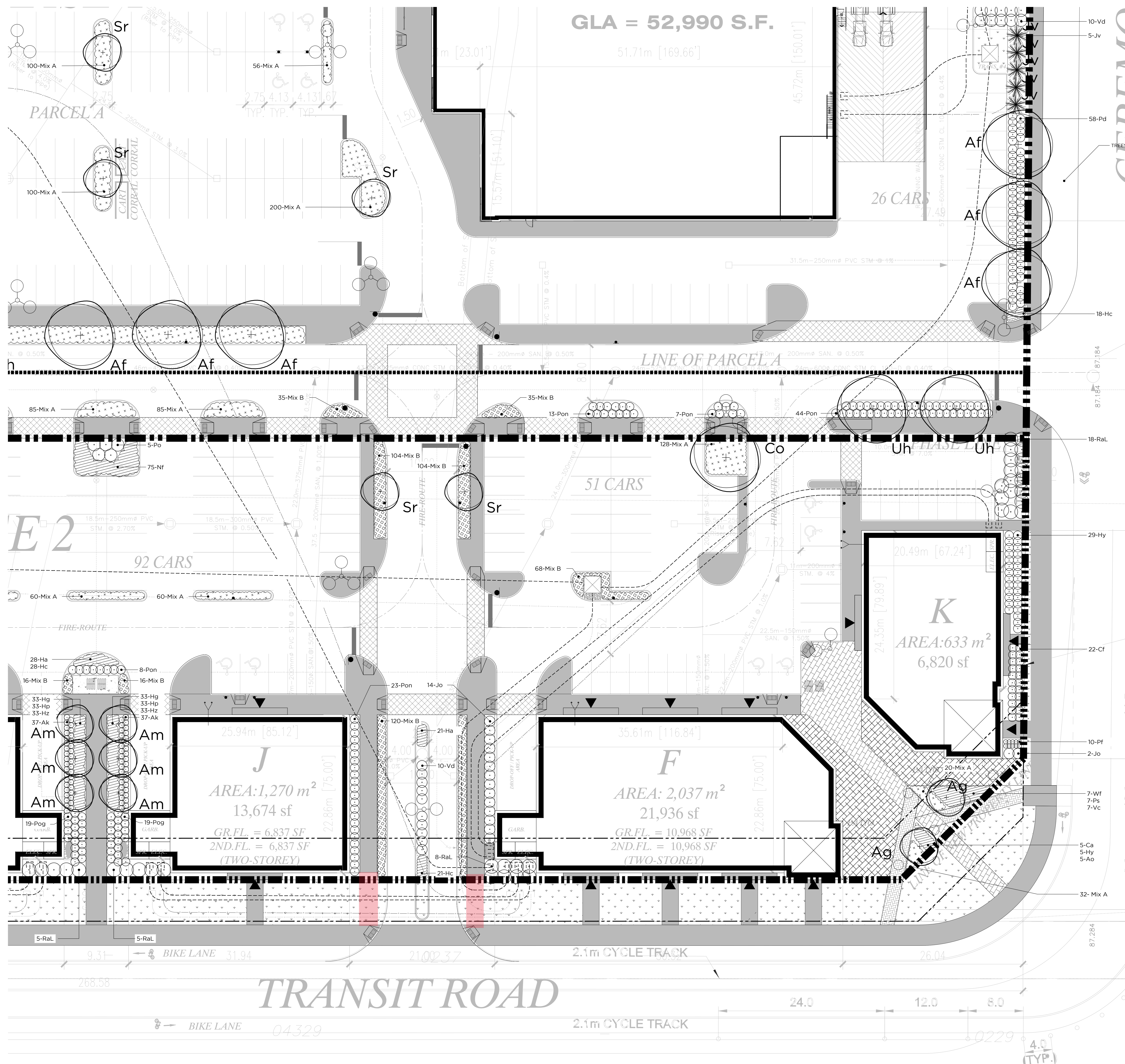
NOTES  
1. DESIGN OF WALKWAYS ARE SUBJECT TO AS-BUILT SURVEY INFORMATION AND FUTURE ROAD ALIGNMENTS.

APPROVED  
By Lily Xu at 4:08 pm, Oct 12, 2022

*Lily Xu*

LILY XU, MCIP, RPP  
MANAGER, DEVELOPMENT REVIEW SOUTH  
PLANNING, INFRASTRUCTURE & ECONOMIC  
DEVELOPMENT DEPARTMENT, CITY OF OTTAWA

PRELIMINARY  
NOT FOR CONSTRUCTION



- GENERAL NOTES:
- DO NOT SCALE DRAWINGS.
  - NOTES ARE APPLICABLE TO ALL DRAWINGS IN THE SET.
  - Fotenn Consultants Inc. IS NOT RESPONSIBLE FOR ACCURACY OF BASE INFORMATION.
  - REFER TO CIVIL ENGINEERING DRAWINGS FOR GRADING & SITE SERVICING INFORMATION.
  - THE CONTRACTOR IS RESPONSIBLE FOR CONFIRMING SITE CONDITIONS AND REPORTING ANY DISCREPANCIES TO THE LANDSCAPE ARCHITECT.
  - THE CONTRACTOR IS RESPONSIBLE FOR CONFIRMING EXACT LOCATIONS OF ALL UNDERGROUND SERVICES AND OBTAINING CLEARANCE FROM ALL APPLICABLE UTILITIES. PROPOSED WORKS FOUND TO BE IN CONFLICT WITH UNDERGROUND SERVICES MAY BE ADJUSTED AT THE DIRECTION OF THE LANDSCAPE ARCHITECT.
  - LANDSCAPE ELEMENTS SHOWN ARE SUBJECT TO THE FINAL LOCATION OF UNDERGROUND SERVICES AND UTILITIES.
  - DO NOT INSTALL TREES ON PROPERTY / LOT LINES OR WITHIN DRAINAGE EASEMENTS.
  - PERFORM WORK IN ACCORDANCE WITH DETAILS AND SPECIFICATIONS.
  - ALL PLANT MATERIAL SHALL BE No. 1 NURSERY STOCK AND SHALL MEET OR EXCEED THE SPECIFICATION OF THE Canadian Standards for Nursery Stock, AS PUBLISHED BY THE Canadian Nursery Landscape Association.
  - SPECIES SUBSTITUTIONS ARE NOT PERMITTED WITHOUT PRIOR WRITTEN APPROVAL OF THE LANDSCAPE ARCHITECT.
  - ALL UN-PAVED SURFACES TO RECEIVE 150mm DEPTH TOPSOIL & SOD.

NO.	DESCRIPTION	DATE
12	RESUBMITTED FOR SPA	2022/06/22
11	SUBMITTED FOR SPA	2022/06/02
10	COORDINATION WITH NEW SITE PLAN	2021/05/04
9	REVISED AS FOR REVIEW	2017/01/03
8	REVISED AS PER COMMENTS	2017/02/07
7	SUBMITTED FOR SPA REVIEW	2016/07/18
6	SUBMITTED FOR SPA	2016/05/12
5	REVISED FOR REVIEW	2015/08/25
4	REVISED FOR REVIEW	2015/06/15
3	REVISED AS PER COMMENTS	2014/08/19
2	SUBMITTED FOR SPA	2014/04/08
1	FOR REVIEW	2014/03/19

NUMBER	DESCRIPTION	DATE
5-Ca	5-Hy	5-Ao
10-Pf	2-Jo	7-Wf
7-Ps	7-Vc	32-Mix A
10-Vd	5-Jv	58-Pd
18-Hc	18-RaL	29-Hy
22-Cf	20-Mix A	Ag
87.184	87.184	87.284

**FOTENN**

ASSOCIATION OF LANDSCAPE ARCHITECTS

PROJECT LOCATION / PROJECT ENDORSE

**RIVERSIDE SOUTH SHOPPING CENTRE**  
1420 EARL ARMSTRONG ROAD  
OTTAWA, ONTARIO

DRAWING / DESIGN

**LANDSCAPE PLAN PART PLAN**

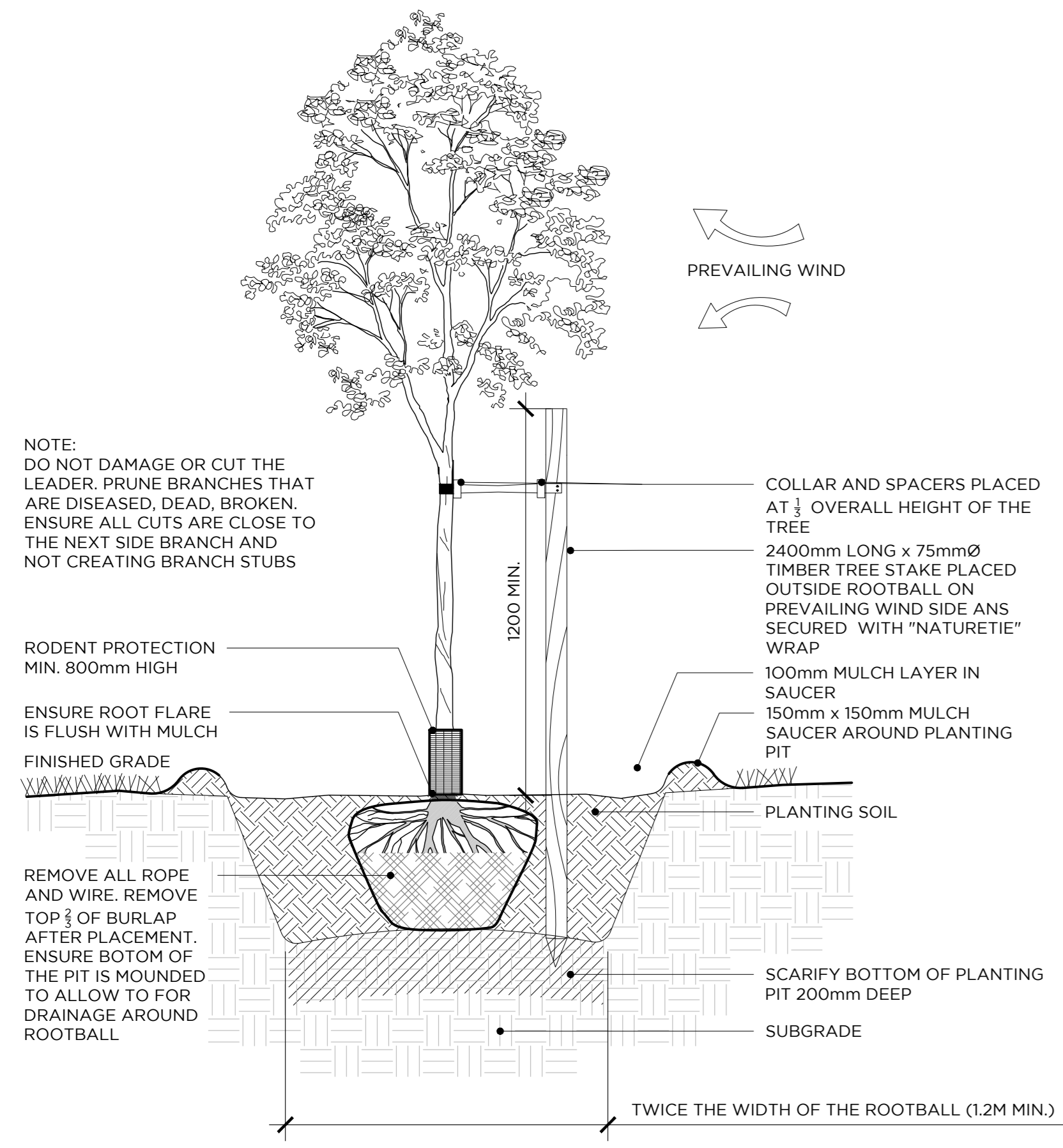
DESIGNED BY: GORDIAN L.V./S.V./E.P./K.A.  
DRAWN BY: DESIREE PAR L.M./S.V./E.P./S.T.  
CHECKED BY: VERONIQUE K.A.

SHEET NO. / FEUILLE NO. **L1-5**

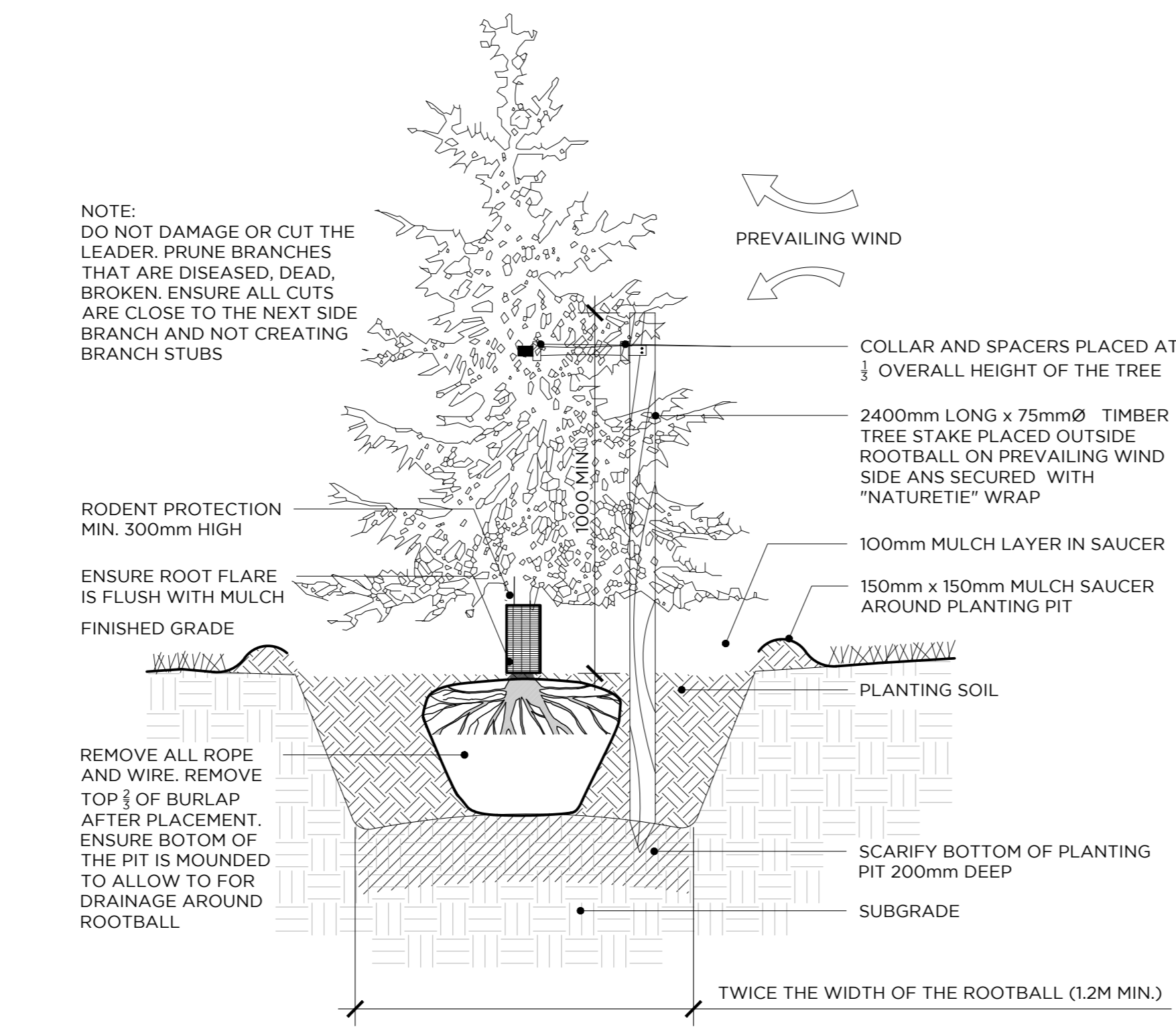
SCALE: ÉCHELLE 1:200

GRAPHIC SCALE 1:200

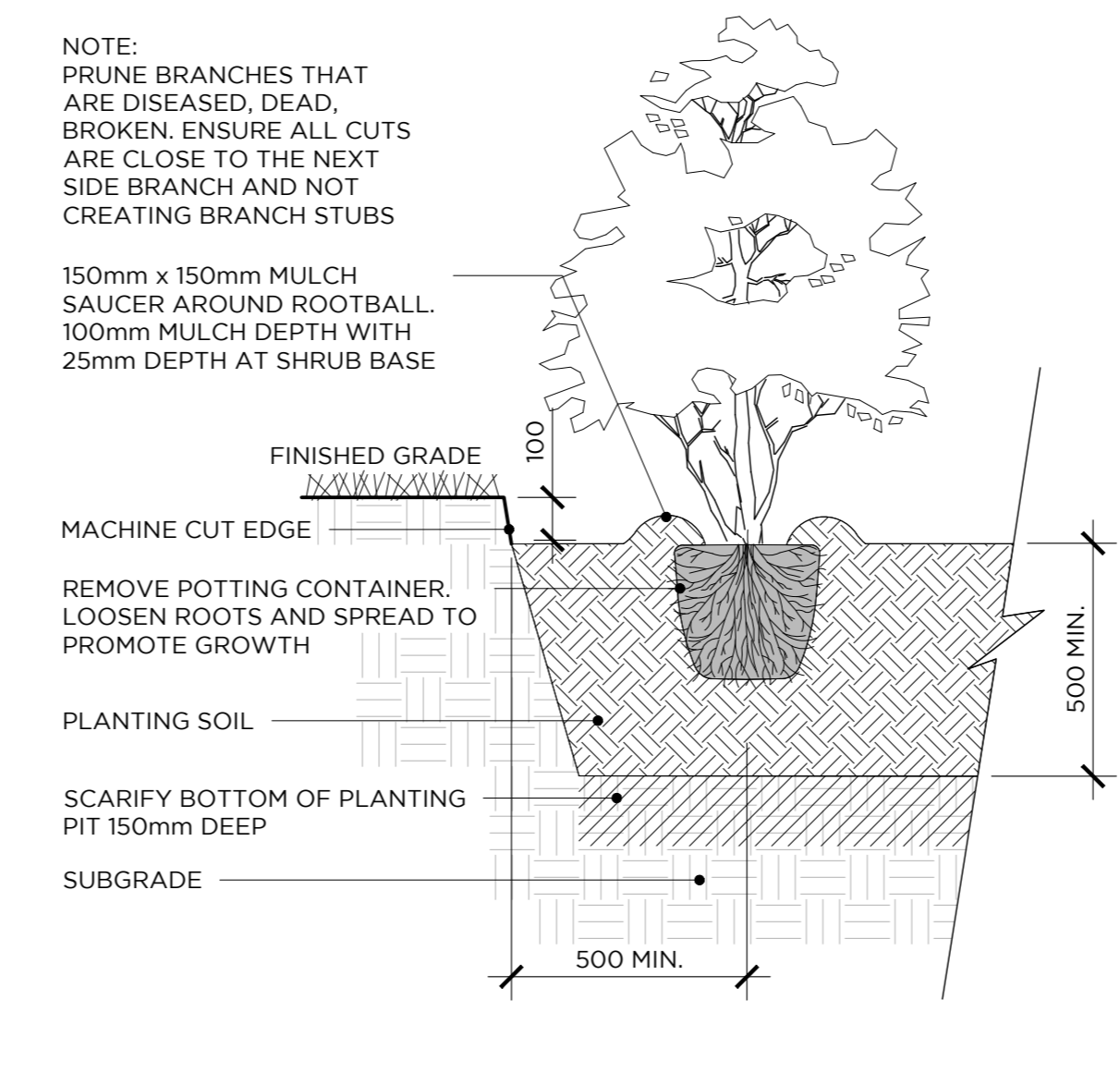
- NOTES**
1. ALL WORK SHALL BE IN ACCORDANCE WITH THE GEOTECHNICAL INVESTIGATION REPORT.
  2. CONTRACTOR TO FOLLOW MINIMUM RECOMMENDED DEPTH FOR COMPACTED GRANULAR BASE COURSE IDENTIFIED FOR DIFFERENT PAVEMENT STRUCTURES.
  3. DRAWING MAY NOT BE USED FOR CONSTRUCTION UNTIL SIGNED BY THE LANDSCAPE ARCHITECT, AS ISSUED FOR CONSTRUCTION.



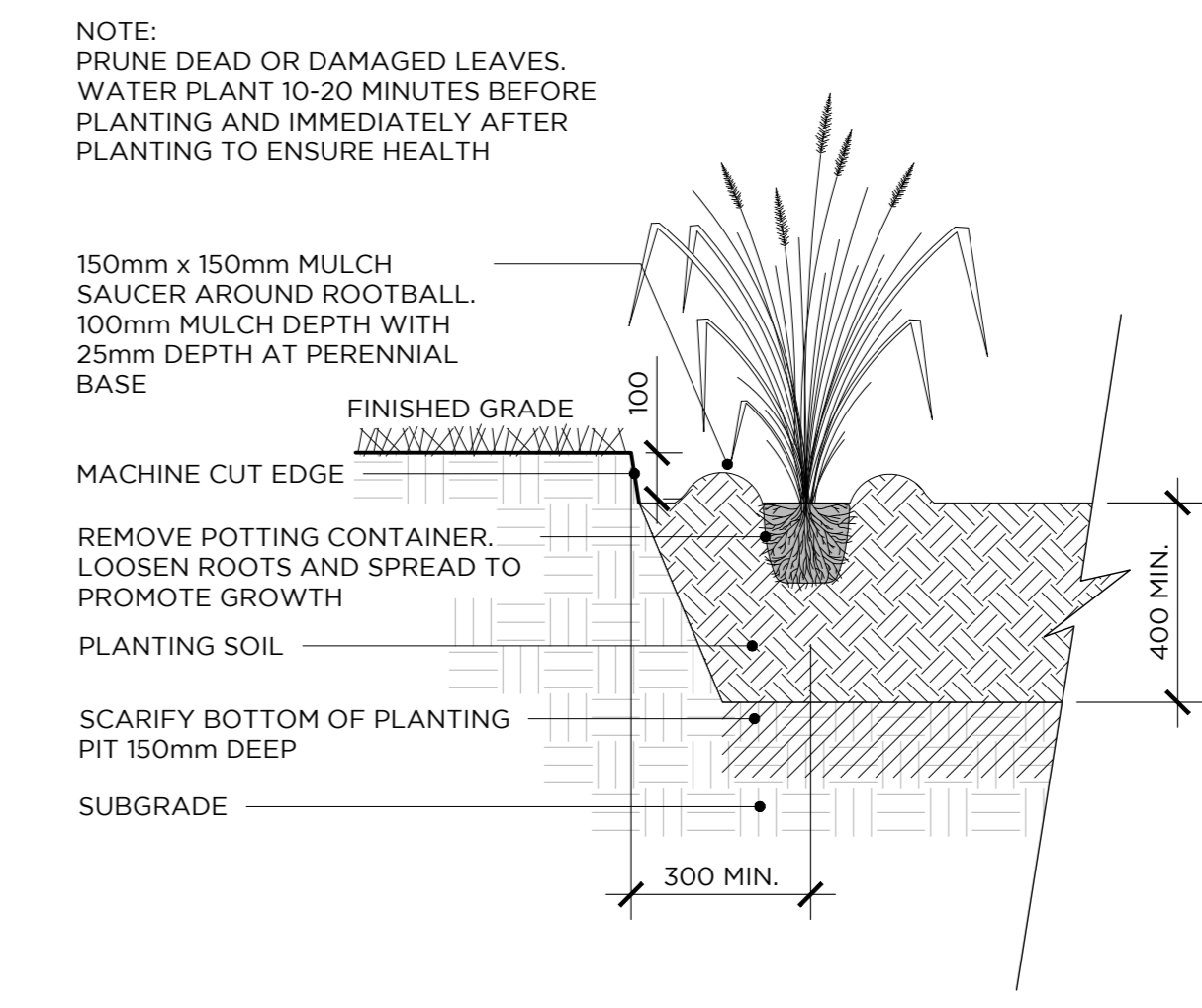
1 | DECIDUOUS TREE PLANTING | NTS



2 | CONIFEROUS TREE PLANTING | NTS



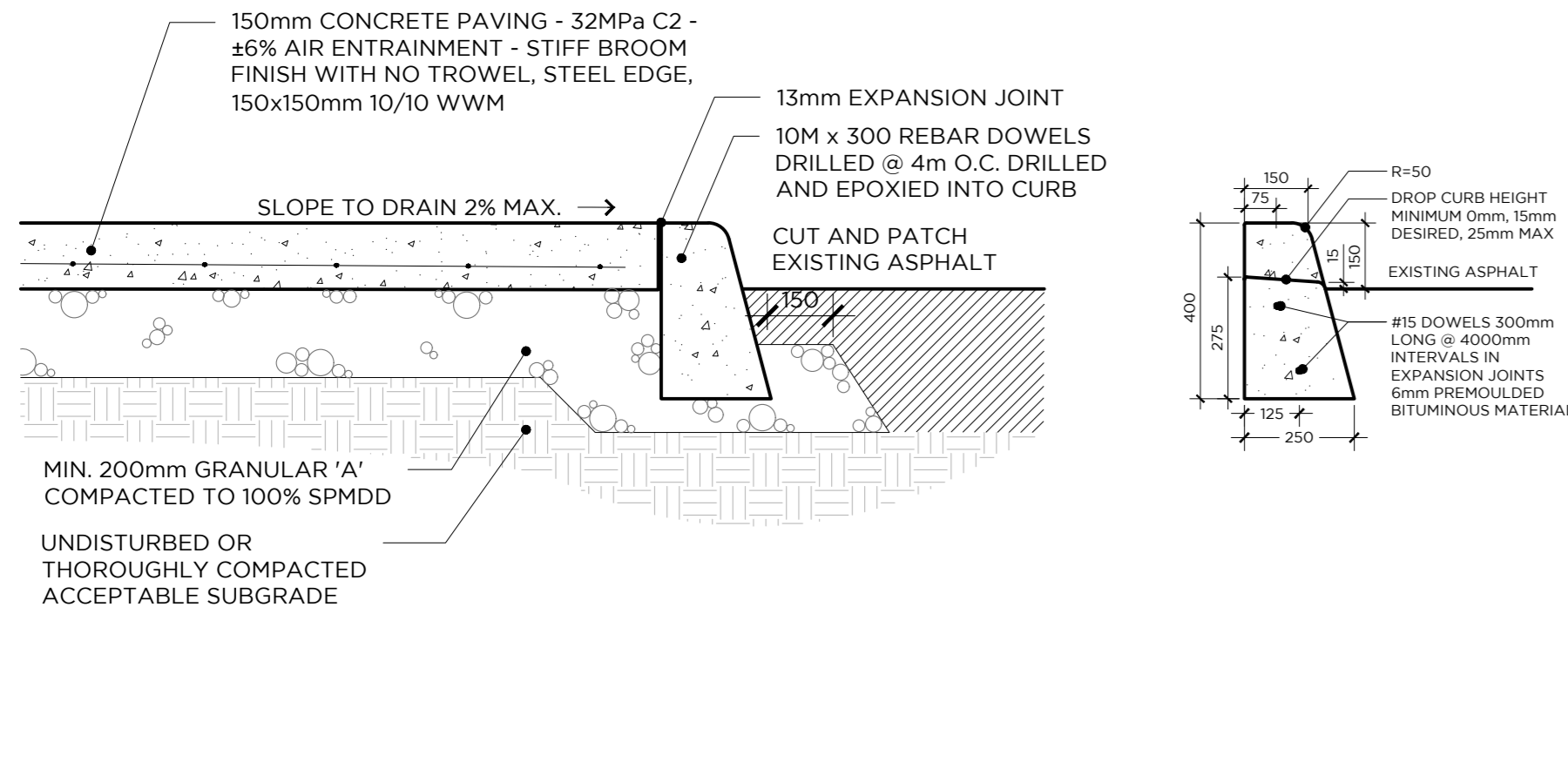
3 | SHRUB PLANTING | NTS



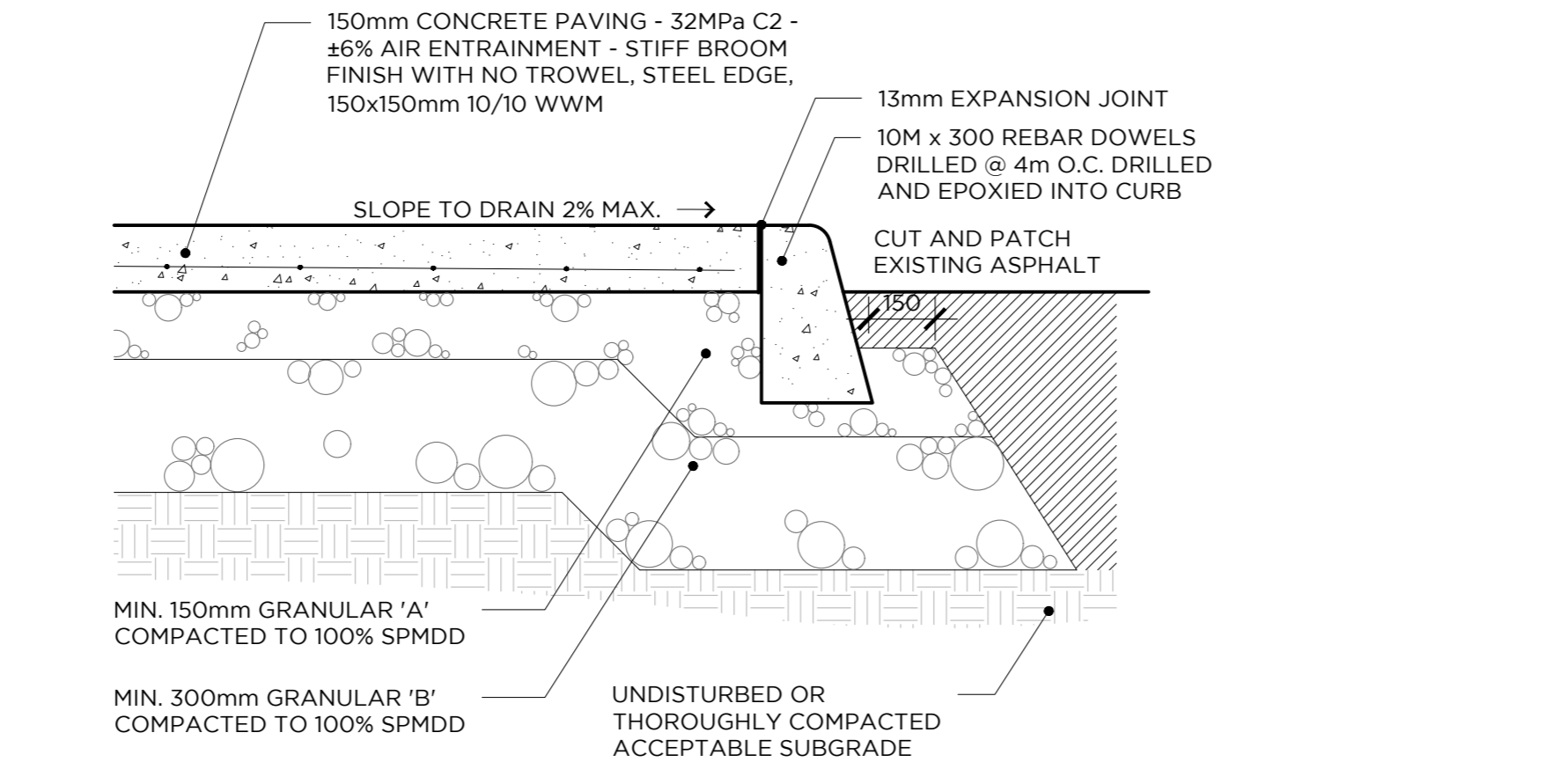
4 | PERENNIAL & GRASS PLANTING | NTS

**PRELIMINARY**  
NOT FOR CONSTRUCTION

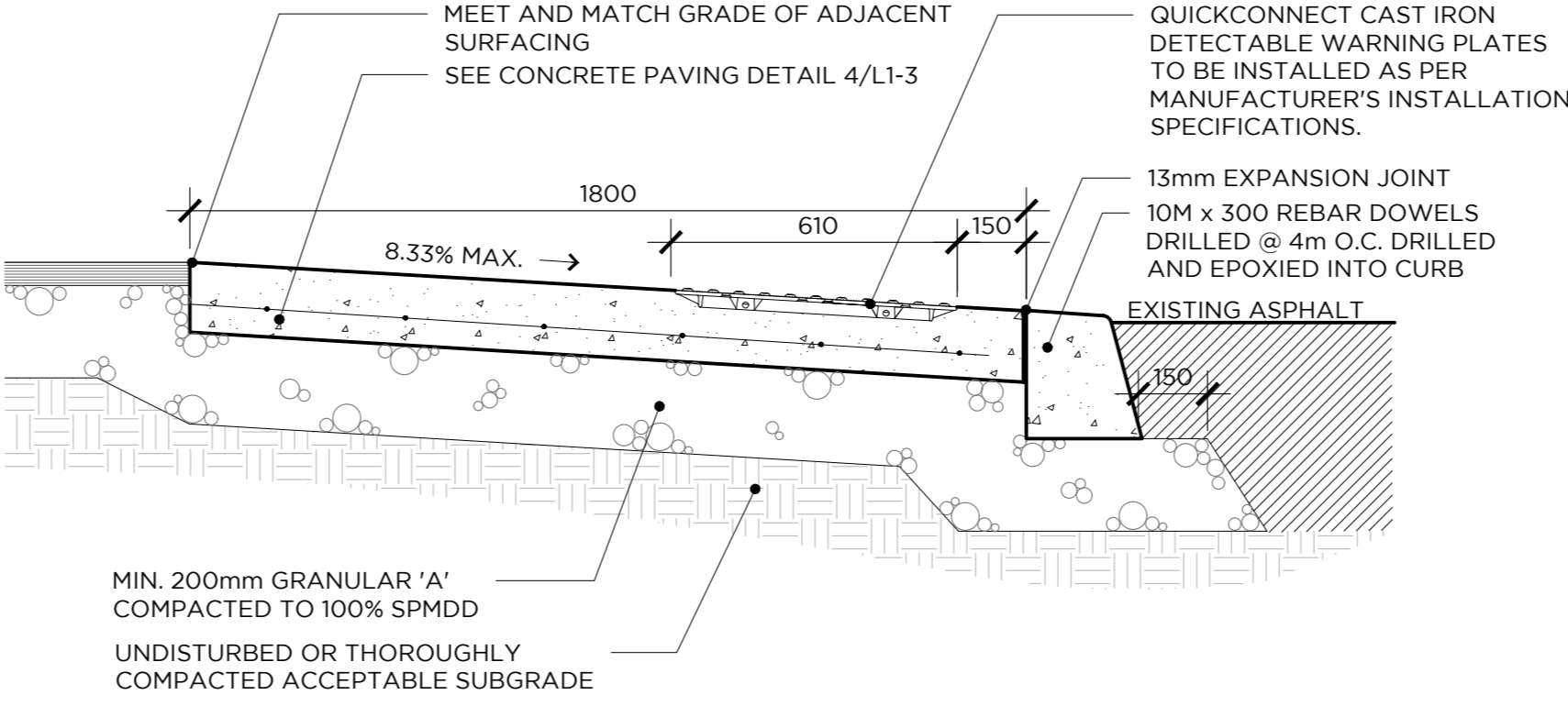
- GENERAL NOTES:**
1. DO NOT SCALE DRAWINGS.
  2. NOTES ARE APPLICABLE TO ALL DRAWINGS IN THE SET.
  3. Fotenn Consultants Inc. IS NOT RESPONSIBLE FOR ACCURACY OF BASE INFORMATION.
  4. REFER TO CIVIL ENGINEERING DRAWINGS FOR GRADING & SITE SERVICING INFORMATION.
  5. THE CONTRACTOR IS RESPONSIBLE FOR CONFIRMING SITE CONDITIONS AND REPORTING ANY DISCREPANCIES TO THE LANDSCAPE ARCHITECT.
  6. THE CONTRACTOR IS RESPONSIBLE FOR CONFIRMING EXACT LOCATIONS OF ALL UNDERGROUND SERVICES AND OBTAINING CLEARANCE FROM ALL APPLICABLE UTILITIES. PROPOSED WORKS FOUND TO BE IN CONFLICT WITH UNDERGROUND SERVICES MAY BE ADJUSTED AT THE DIRECTION OF THE LANDSCAPE ARCHITECT.
  7. LANDSCAPE ELEMENTS SHOWN ARE SUBJECT TO THE FINAL LOCATION OF UNDERGROUND SERVICES AND UTILITIES.
  8. DO NOT INSTALL TREES ON PROPERTY / LOT LINES OR WITHIN DRAINAGE EASEMENTS.
  9. PERFORM WORK IN ACCORDANCE WITH DETAILS AND SPECIFICATIONS.
  10. ALL PLANT MATERIAL SHALL BE No. 1 NURSERY STOCK AND SHALL MEET OR EXCEED THE SPECIFICATION OF THE Canadian Standards for Nursery Stock, AS PUBLISHED BY THE Canadian Nursery Landscape Association.
  11. SPECIES SUBSTITUTIONS ARE NOT PERMITTED WITHOUT PRIOR WRITTEN APPROVAL OF THE LANDSCAPE ARCHITECT.
  12. ALL UN-PAVED SURFACES TO RECEIVE 150mm DEPTH TOPSOIL & SOD.



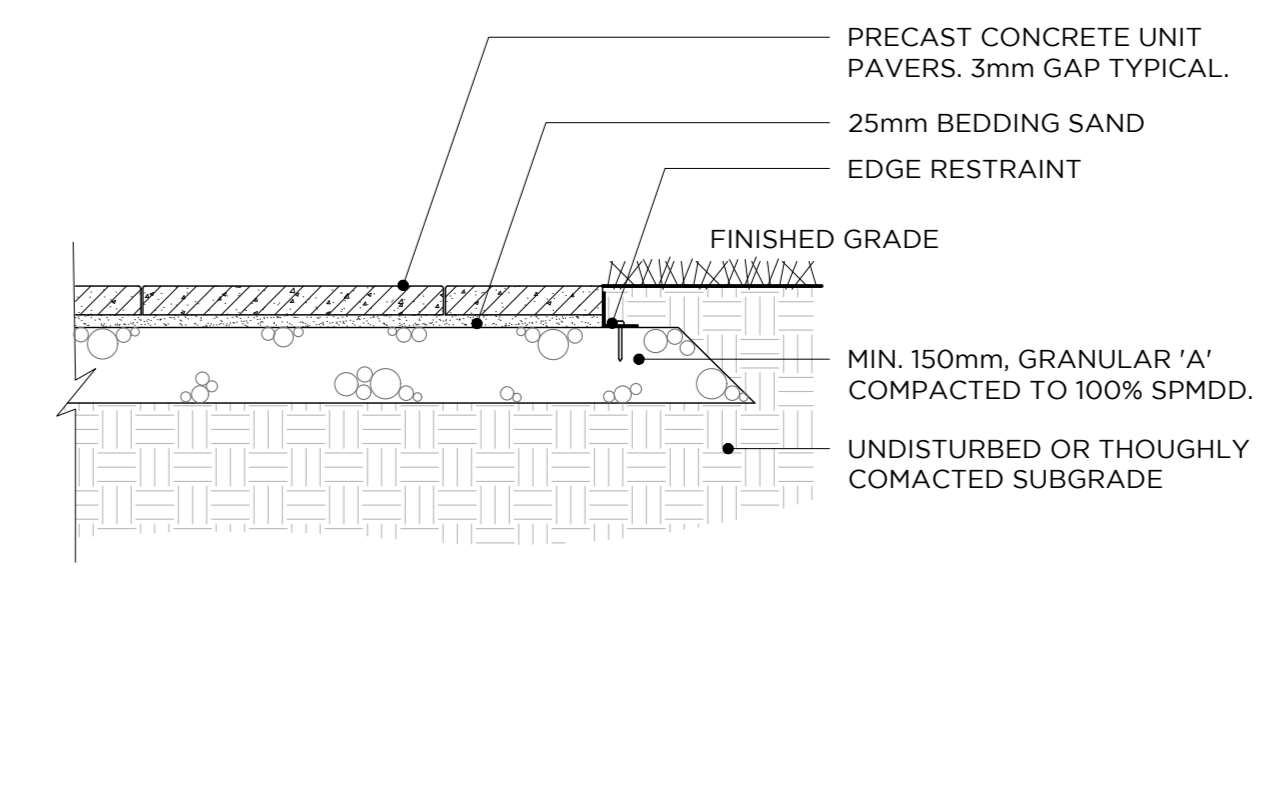
5 | LIGHT DUTY CONCRETE PAVING | NTS



6 | HEAVY DUTY CONCRETE PAVING | NTS



7 | DETECTABLE WARNING STRIP AT CURB RAMP | NTS

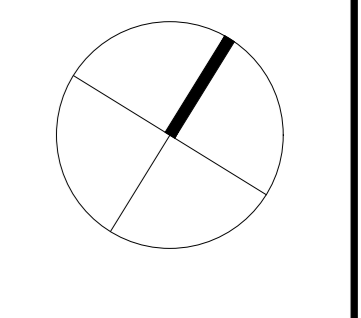


8 | LIGHT DUTY PRECAST CONCRETE PAVERS | NTS

12	RESUBMITTED FOR SPA	2022/06/22
11	SUBMITTED FOR SPA	2021/08/12
10	COORDINATION WITH NEW SITE PLAN	2021/05/04
9	REVISED AS FOR REVIEW	2017/01/03
8	REVISED AS PER COMMENTS	2017/02/17
7	SUBMITTED FOR SPA REVI	2016/10/18
6	SUBMITTED FOR SPA	2016/05/12
5	REVISED FOR REVIEW	2015/08/25
4	REVISED FOR REVIEW	2015/06/15
3	REVISED AS PER COMMENTS	2014/08/19
2	SUBMITTED FOR SPA	2014/04/08
1	FOR REVIEW	2014/03/10

NUMBER: WILSON/FAT BALLANT | DATE: 01/02/2022

**FOTENN**



PROJECT / LOCATION / PROJECT / ENDPOINT

**RIVERSIDE SOUTH SHOPPING CENTRE**  
1420 EARL ARMSTRONG ROAD  
OTTAWA, ONTARIO

DRAWING / DESIGN

**DETAILS**

APPROVED  
By Lily Xu at 4:08 pm, Oct 12, 2022

*Lily Xu*  
LILY XU, MCIIP, RPP  
MANAGER, DEVELOPMENT REVIEW SOUTH  
PLANNING, INFRASTRUCTURE & ECONOMIC  
DEVELOPMENT DEPARTMENT, CITY OF OTTAWA

DESIGNED BY / CONSULTANT	L.V./G.V./E.P./K.A.	SHEET NO. / FEUILLE NO.	<b>L2-1</b>
DRAWN BY / DESIGNER	L.V./G.V./E.P./S.T.	SCALE / ÉCHELLE	
CHECKED BY / VERIFIER	K.A.	AS SHOWN	