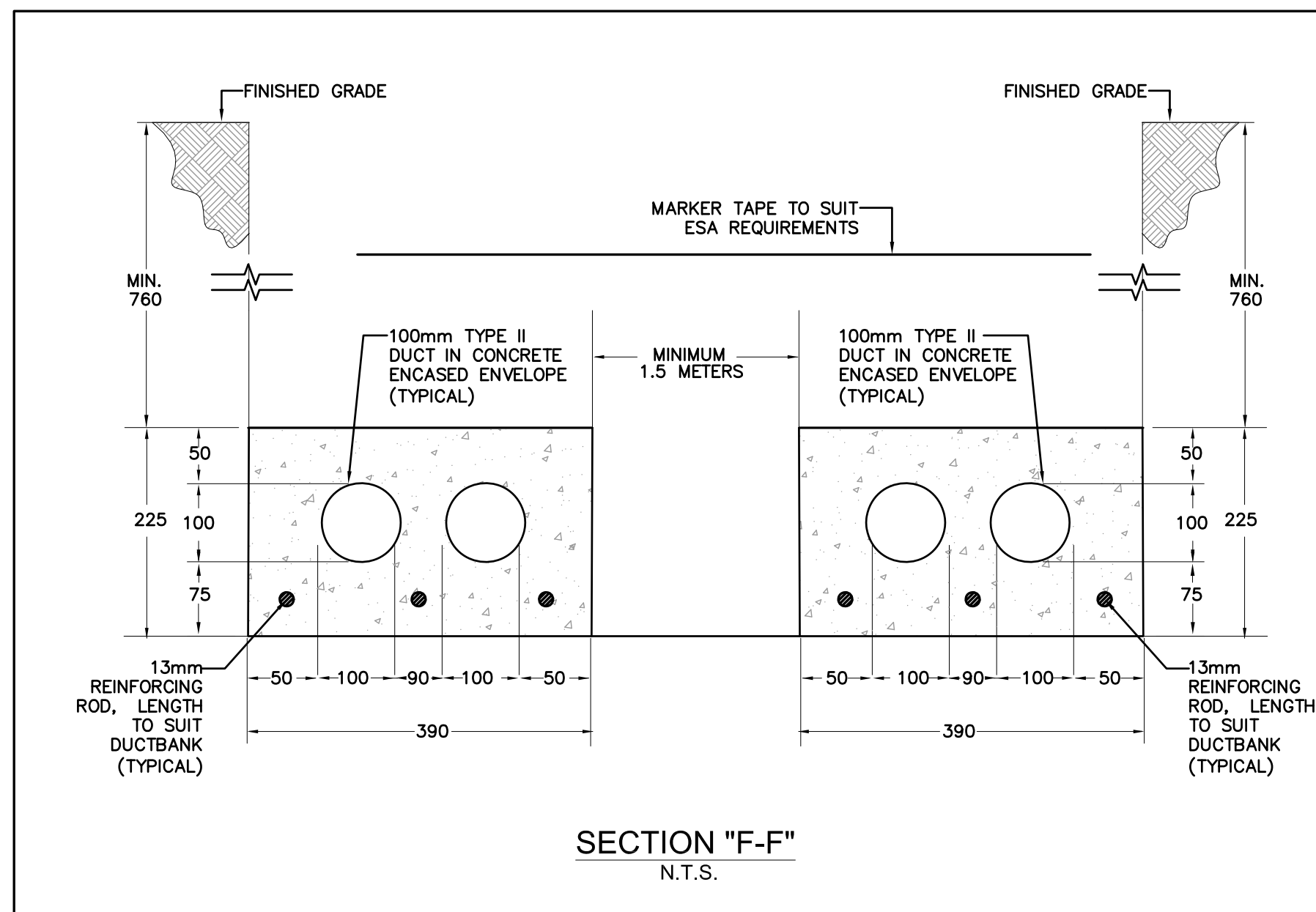
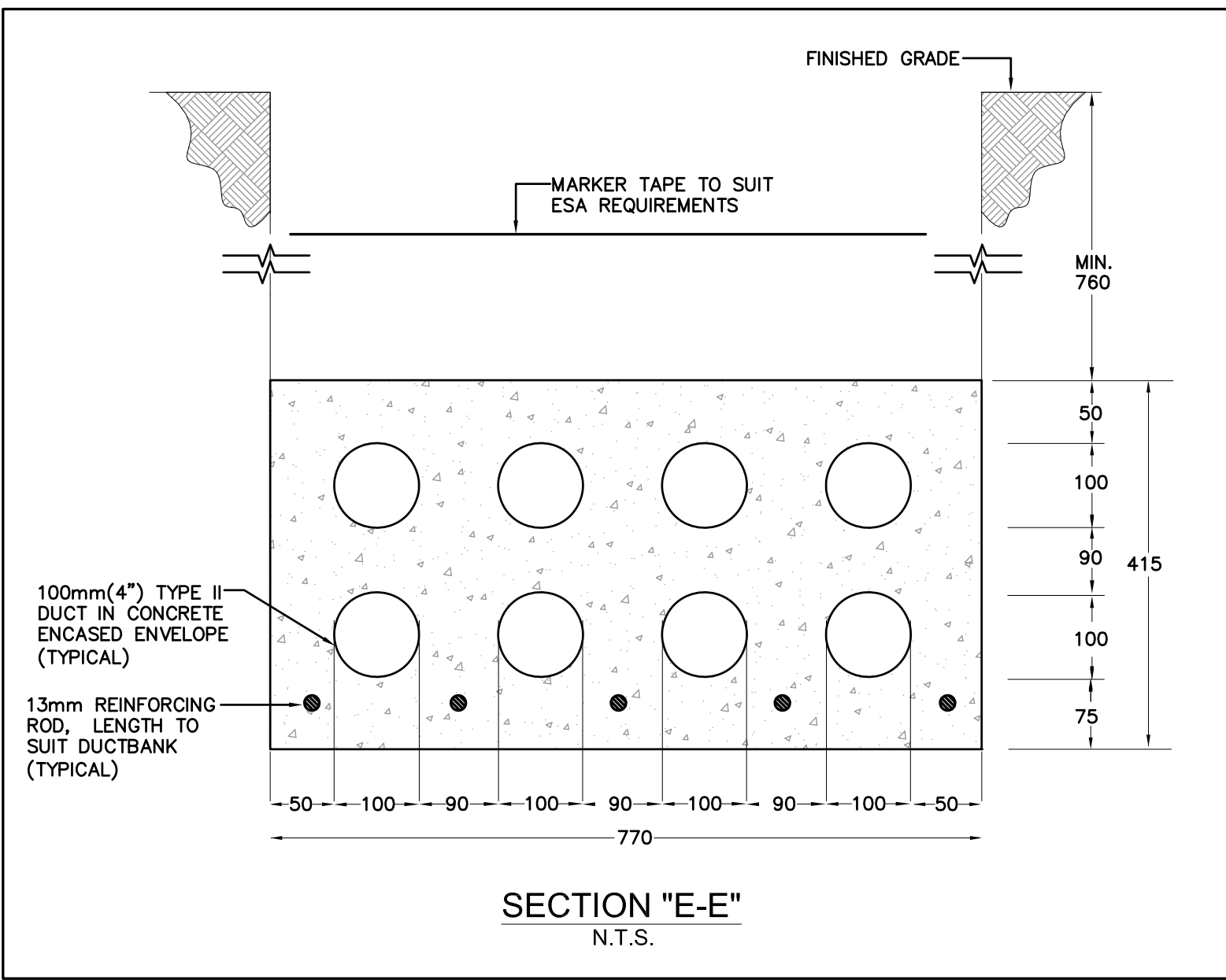
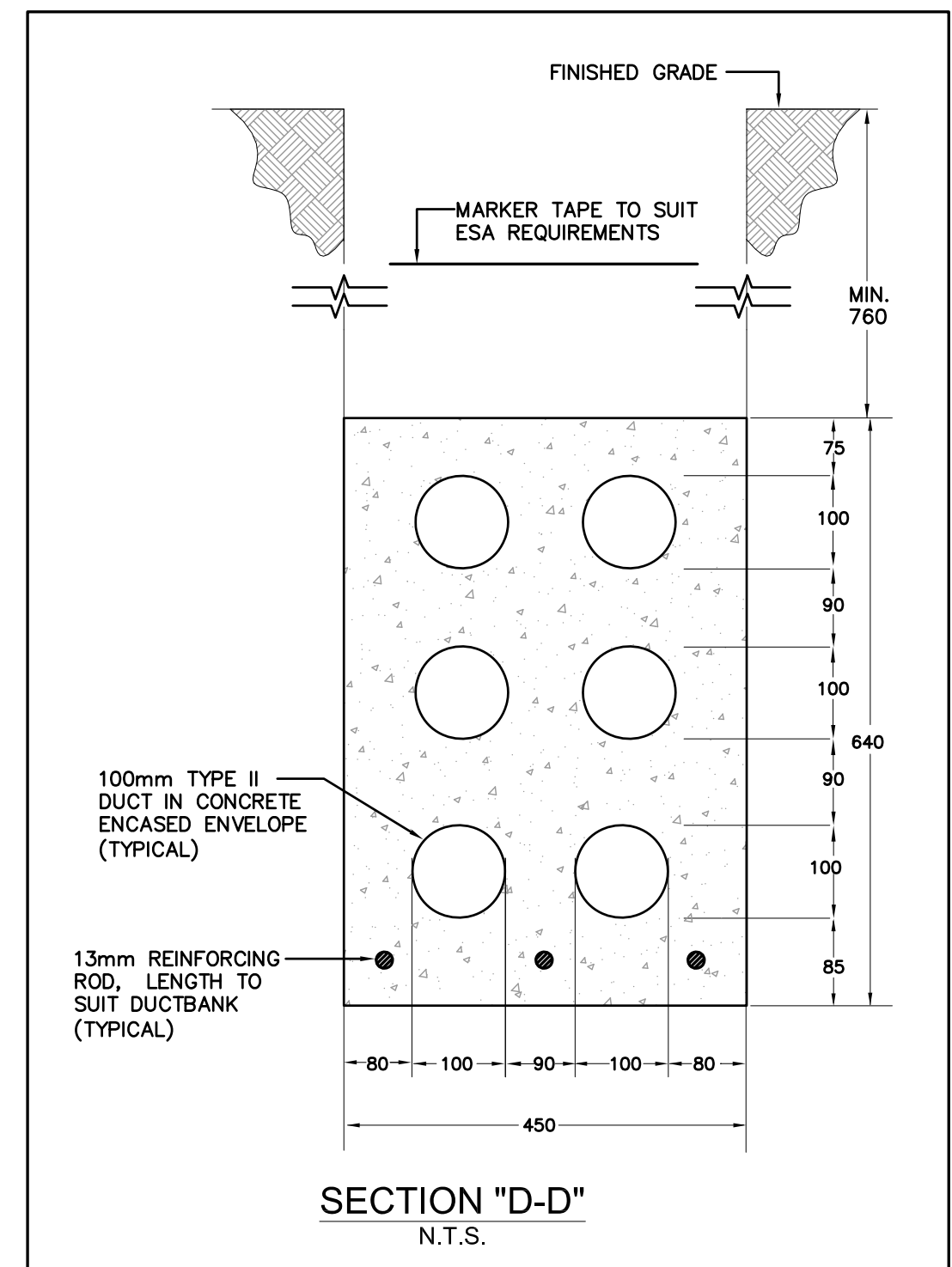
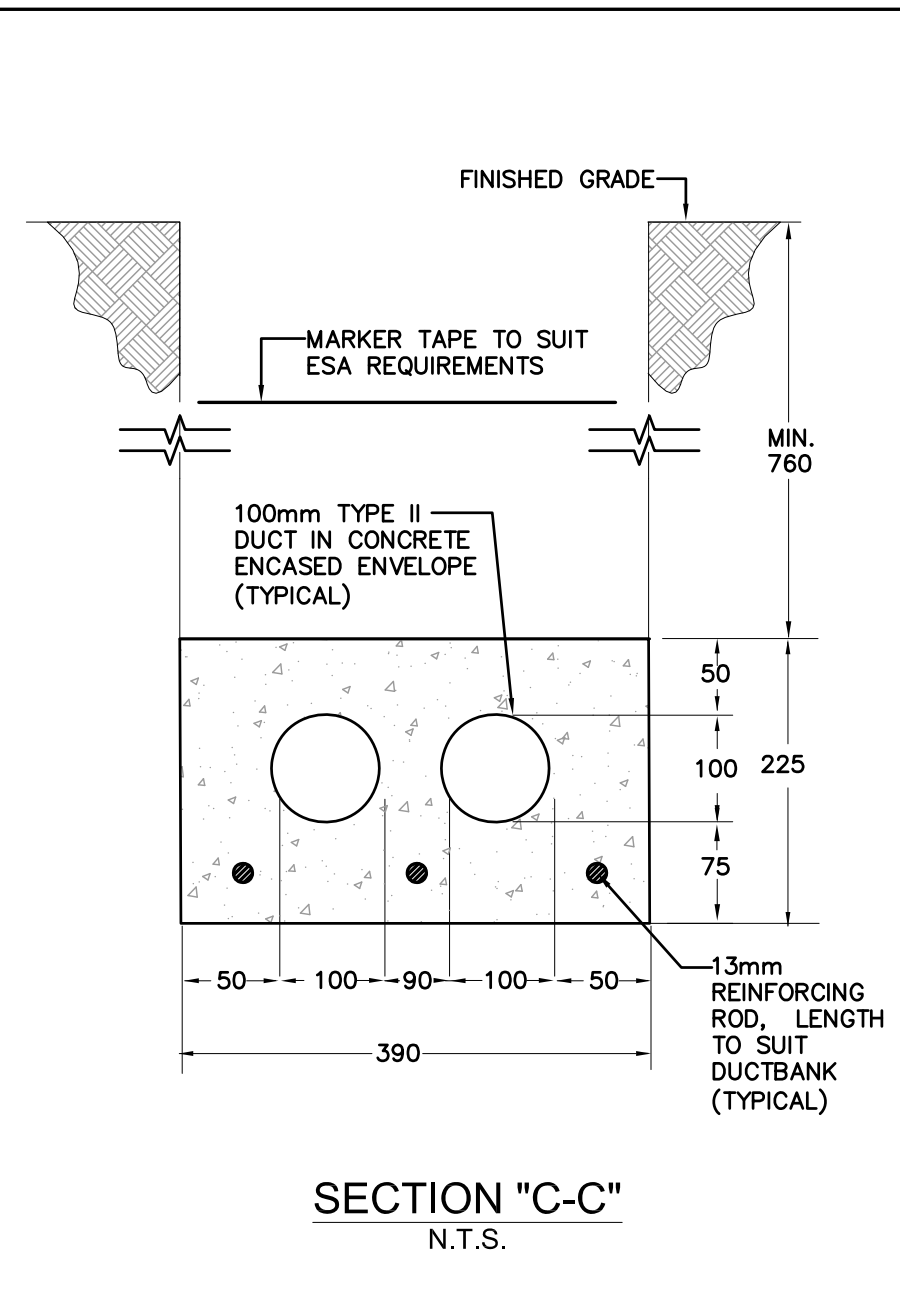
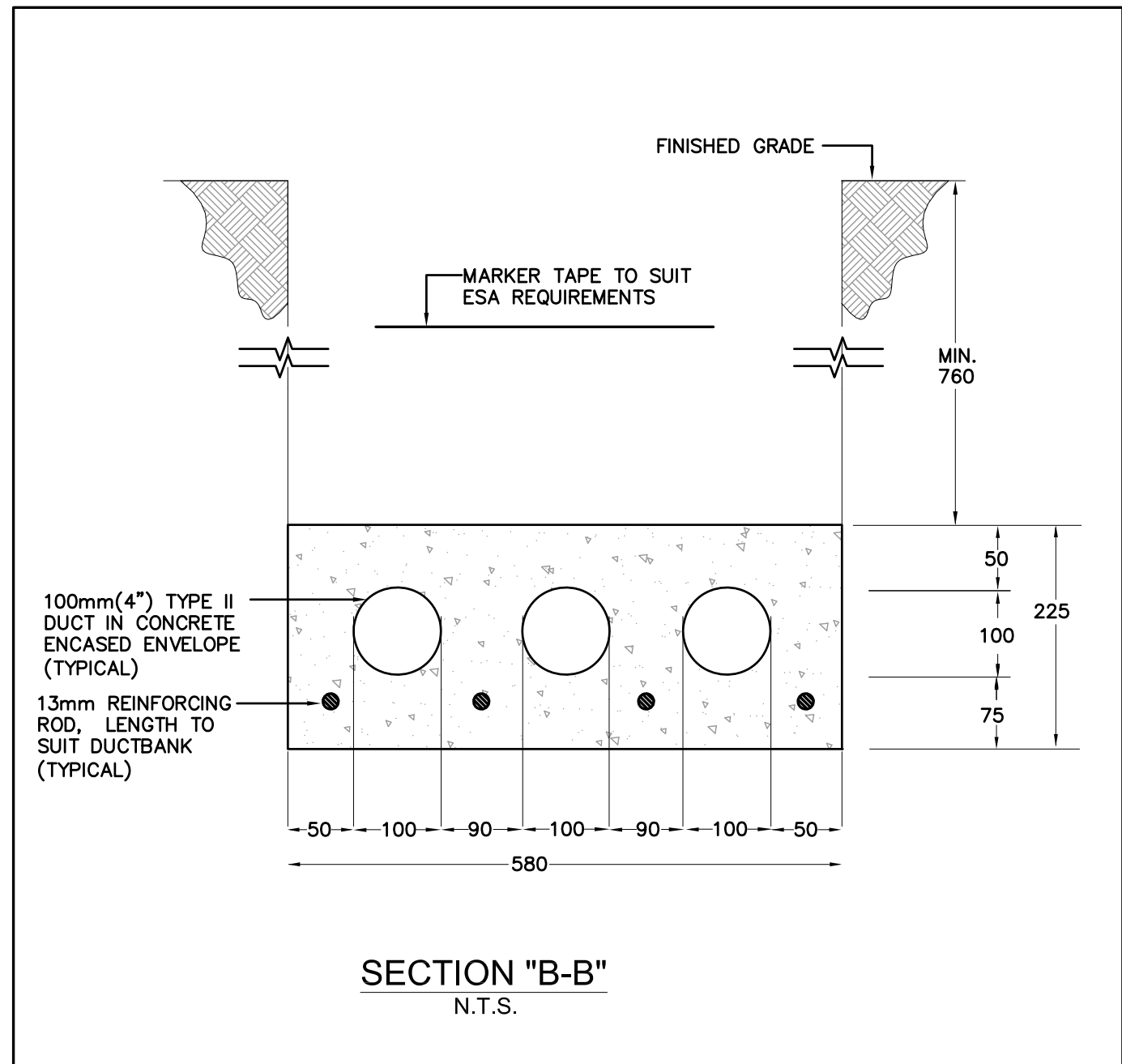
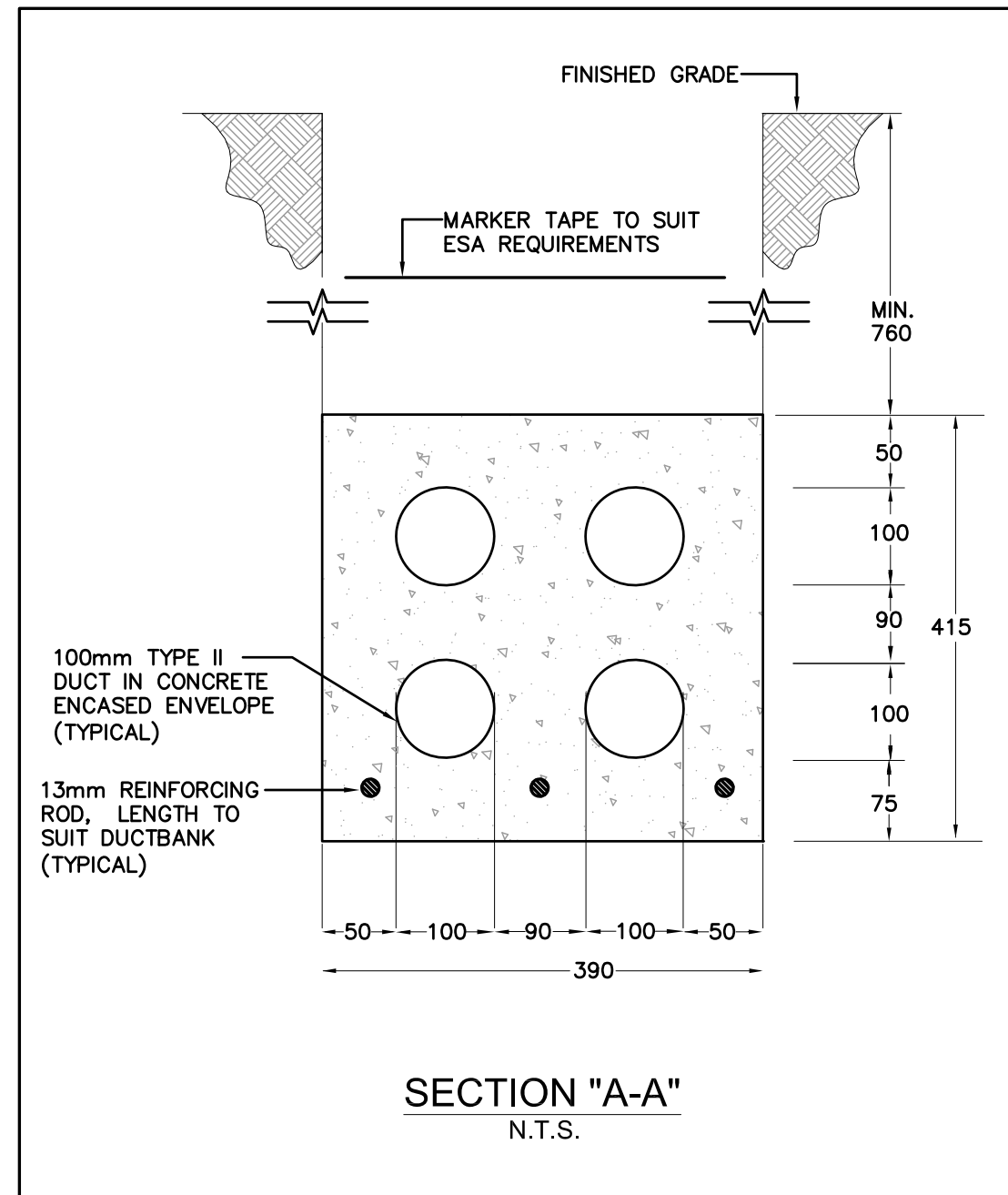
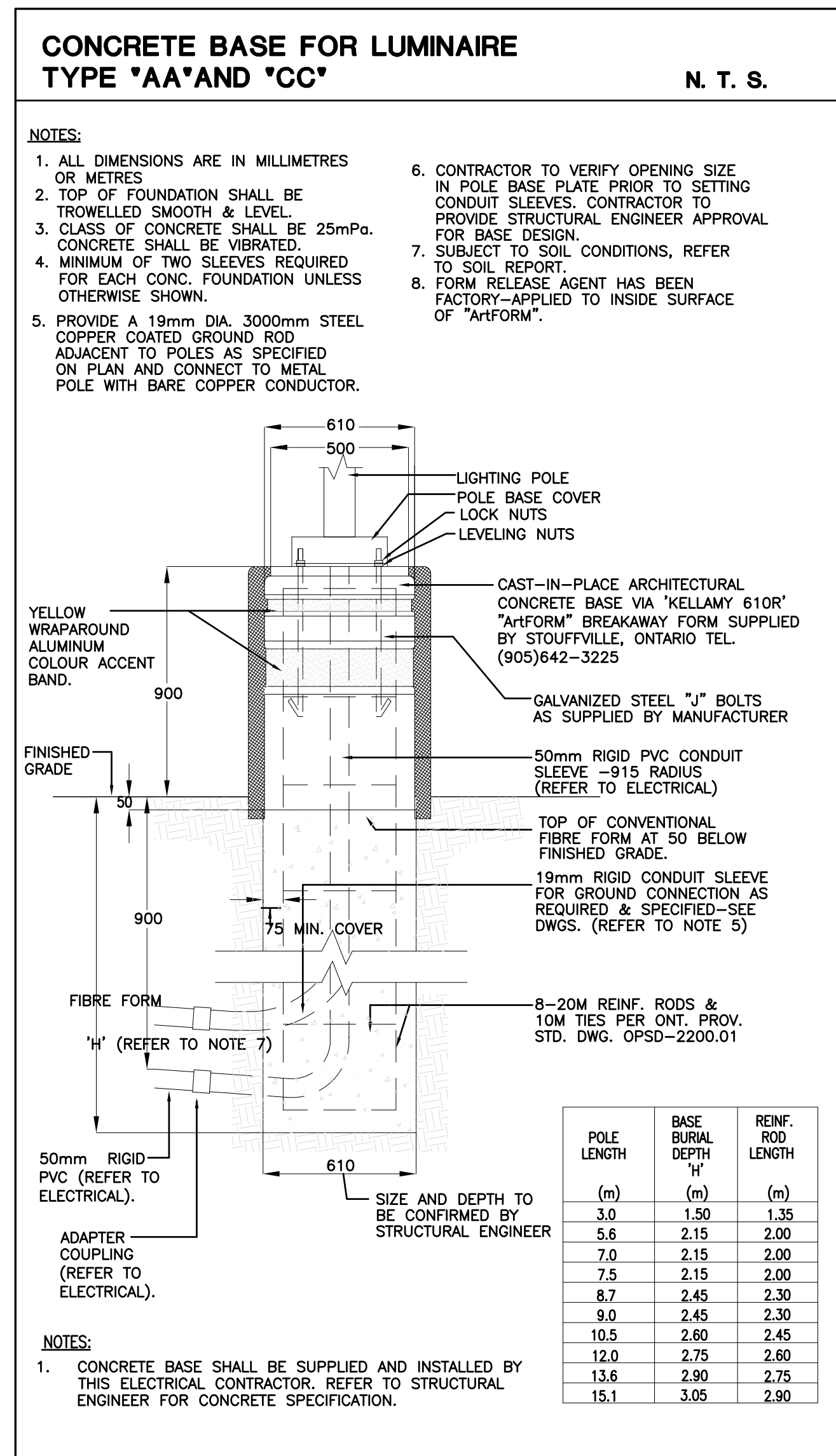
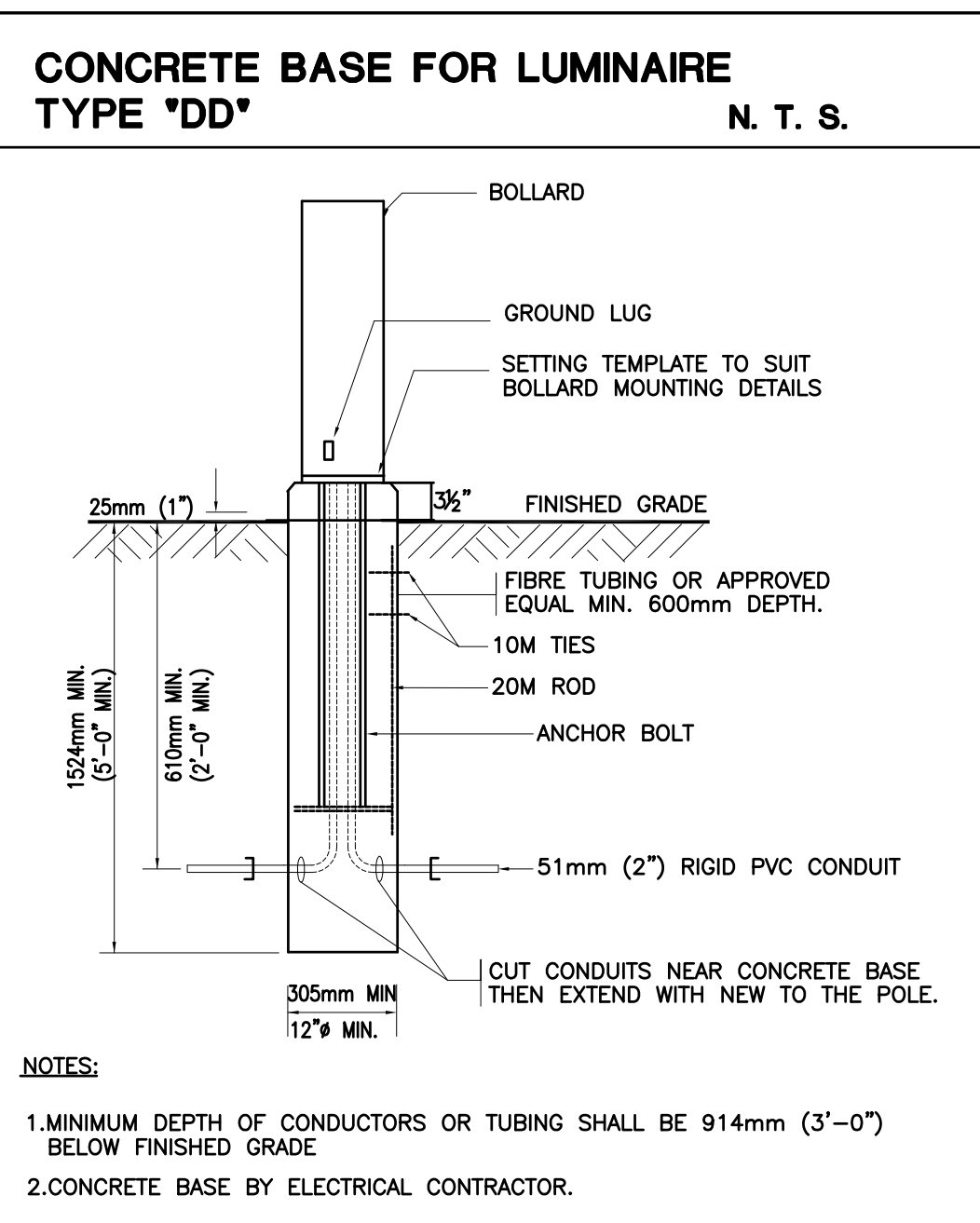


LIGHTING FIXTURE SCHEDULE			
TYPE	DESCRIPTION	LAMP	MANUFACTURER
'AA'	POLE MOUNTED LED LIGHTING FIXTURE C/W 3 FIXTURES PER POLE (3@120") EACH FIXTURE SHALL BE C/W DIE CAST ALUMINUM HOUSING MOUNTED DIRECTLY ON THE POLE WITH TYPE S SYMMETRICAL SQUARE DISTRIBUTION. FIXTURE SHALL BE MOUNTED ON STRAIGHT ROUND POLE WITH 30"-0" IN HEIGHT MADE WITH STEEL GALVANIZED AND COME WITH FIXED BASE WITH BASE COVER WITH MAN HOLE AT APPROXIMATELY 18" ABOVE THE BASE. FIXTURE AND POLE SHALL BE MOUNTED ON 3'-0" CONCRETE BASE PER DETAIL SHOWN ON THIS DRAWING. COLOUR TO BE SELECTED BY THE ARCHITECT. VOLTAGE: 347V	278W LA LED (700MA) (6000°K-CW)	PHILLIPS WIDELITE CAT.# ASA-160-154K-56-UP C/W POLE, BASE AND BASE COVER OR APPROVED EQUAL
'BB'	SAME AS TYPE 'AA' EXCEPT C/W 2 FIXTURES PER POLE (180")	278W LA LED (700MA) (6000°K-CW)	PHILLIPS WIDELITE CAT.# ASA-160-154K-56-UP C/W POLE, BASE AND BASE COVER OR APPROVED EQUAL
'BB1'	SAME AS TYPE 'AA' EXCEPT C/W 2 FIXTURES PER POLE (90")	278W LA LED (700MA) (6000°K-CW)	PHILLIPS WIDELITE CAT.# ASA-160-154K-56-UP C/W POLE, BASE AND BASE COVER OR APPROVED EQUAL
'CC'	SAME AS TYPE 'AA' EXCEPT C/W 1 FIXTURE PER POLE VOLTAGE: 347V	278W LA LED (700MA) (6000°K-CW)	PHILLIPS WIDELITE CAT.# ASA-160-154K-46-UP C/W POLE, BASE AND BASE COVER OR APPROVED EQUAL
'DD'	44"H METAL HALIDE BOLLARD LIGHT. COLOR OF FIXTURE SHALL BE BLACK. FIXTURE SHALL BE MOUNTED ON CONCRETE BASE AS PER DETAIL. VOLTAGE: 347V BALLAST- OUTDOOR BALLAST SUITABLE TO OPERATE 1-70W M.H. LAMP.	1-70W MH. LAMP	COOPER LIGHTING "INVUE" CAT.#VXB44-70MH-347BK.



### SITE STATISTICS

**OVERALL SITE:**  
TOTAL SITE AREA = 703,582.72 SF (16.15 ACRES) (6.53 HA.)  
TOTAL GR. FL. RETAIL AREA = 169,032 SF (15,703.59 SM)  
TOTAL 2ND FL. OFFICE AREA = 40,725 SF (3,783.47 SM)

TOTAL RETAIL PARKING REQ. @ 3.6/100 SM = 565 CARS  
TOTAL OFFICE PARKING REQ. @ 2.4/100 SM = 91 CARS  
TOTAL PARKING REQUIRED = 656 CARS  
TOTAL PARKING PROVIDED = 722 CARS

**PHASE 1 STATS:**  
PHASE 1 AREA = 544,733.13 SF (12.51 ACRES) (5.07 HA.)  
GR. FL. RETAIL AREA = 121,487 SF (11,286.51 SM)  
2ND FL. OFFICE AREA = 5,000 SF (464 SM)

TOTAL RETAIL PARKING REQUIRED @ 3.6/100 SM = 406 CARS  
TOTAL PARKING PROVIDED = 560 CARS

**PHASE 1 BUILDING AREAS:**

BUILDING	GR. FL. RETAIL	2ND FL. OFFICE
BIG BOX RETAIL STORE A	58,000 SF	**5,000 SF
BUILDING B	6,000 SF	-
BUILDING C	15,000 SF	-
BUILDING D	6,000 SF	-
BUILDING G	5,000 SF	-
BUILDING H	11,203 SF	-
BUILDING I	9,284 SF	-
BUILDING L	6,000 SF	-
BUILDING M	3,000 SF	-
<b>TOTAL</b>	<b>121,487 SF</b>	<b>**5,000 SF</b>

**PHASE 2 STATS:**  
PHASE 2 AREA = 158,909.02 SF (3.64 ACRES) (1.48 HA.)  
GR. FL. RETAIL AREA = 47,545 SF (4,417.07 SM)  
2ND FL. OFFICE AREA = 40,725 SF (3,783.47 SM)

TOTAL RETAIL PARKING REQ. @ 3.6/100 SM = 159 CARS  
TOTAL OFFICE PARKING REQ. @ 2.4/100 SM = 91 CARS  
TOTAL PARKING REQUIRED = 250 CARS  
TOTAL PARKING PROVIDED = 162 CARS

**PHASE 2 BUILDING AREAS:**

BUILDING	GR. FL. RETAIL	2ND FL. OFFICE
BUILDING E	22,466 SF	22,466 SF
BUILDING F	11,252 SF	11,252 SF
BUILDING J	7,007 SF	7,007 SF
BUILDING K	6,820 SF	-
<b>TOTAL</b>	<b>47,545 SF</b>	<b>40,725 SF</b>

**REVISIONS**

No.	REVISIONS	MARK	VOID ALL COPIES	PREVIOUS FINAL DATE	DATE	BY
2.	SITE PLAN REVISED, TRANSFORMER #5 ADDED				MAY/21/15	T.N.
1.	ISSUED TO HYDRO OTTAWA				FEB/24/14	T.N.

Contractor must check and verify all dimensions on the job and report any discrepancies to the Architect before proceeding with the work.  
Do not scale the drawing.  
This drawing contains copyright material belonging to the Architect.  
This drawing was developed for a specific purpose; use for any other purpose is not permitted.  
This drawing shall not be reproduced in whole or in part without the written approval of the Architect.  
This drawing must be read in the context of all the other drawings which constitute the document.

### ELECTRICAL DETAILS

SCALE: AS SHOWN

**LIMEBANK & EARL ARMSTRONG**  
LIMEBANK ROAD & EARL ARMSTRONG ROAD  
OTTAWA, ONTARIO  
FOR: OWNER

**h** HAMMERSCHLAG + JOFFE INC.  
69 Lesmill Road Toronto,  
Ontario Canada M8B 2T8  
T: (416) 444-9263  
F: (416) 444-1463  
E: chj@hampj.com

**PRELIMINARY**

DRAWN BY	T.U.	PROJECT No.	<b>13-244</b>
CHECKED BY	T.N.	DATE	Nov 25, 2016 - 10:44am
ISSUED		DWG. No.	<b>E-2</b>