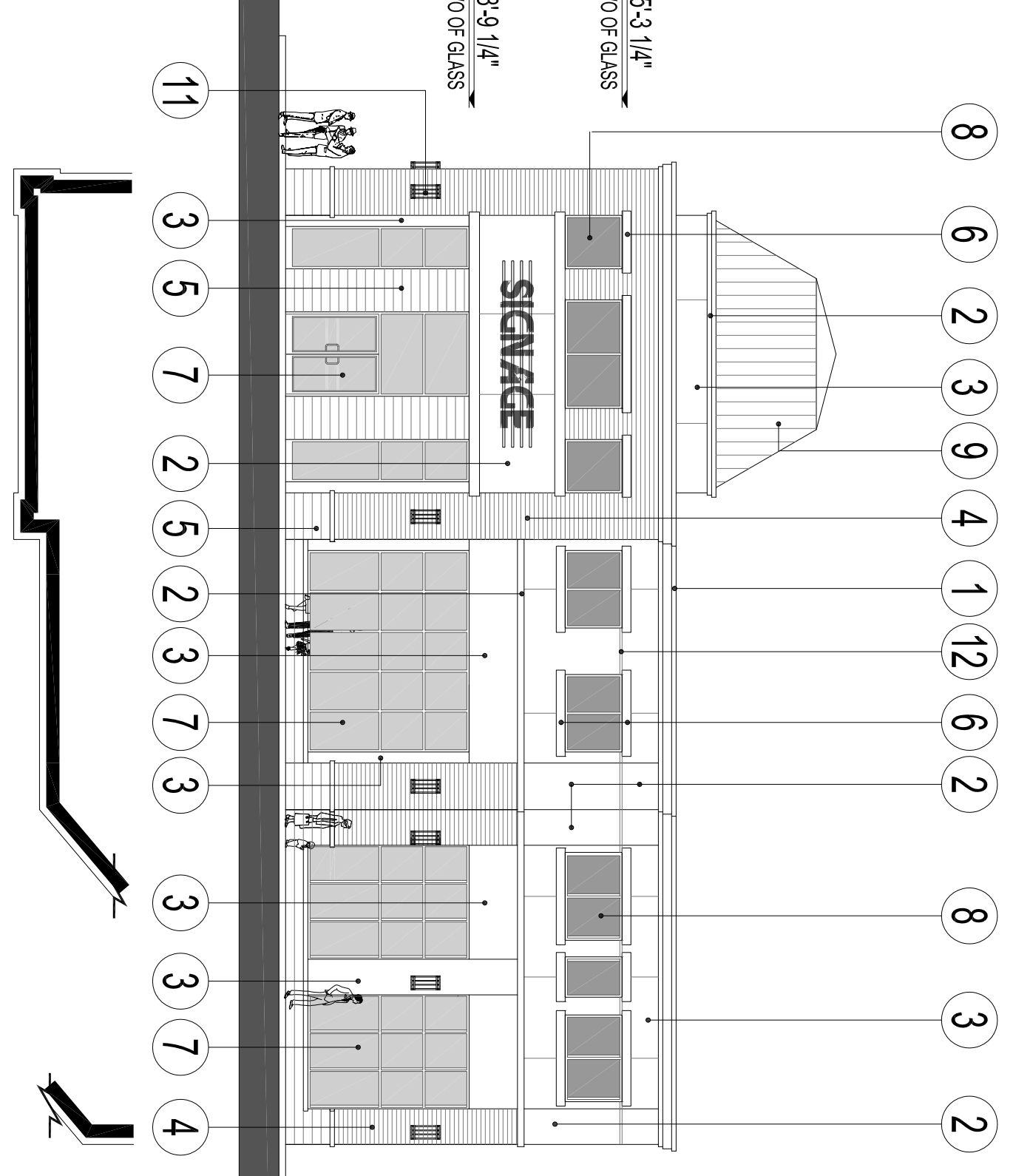
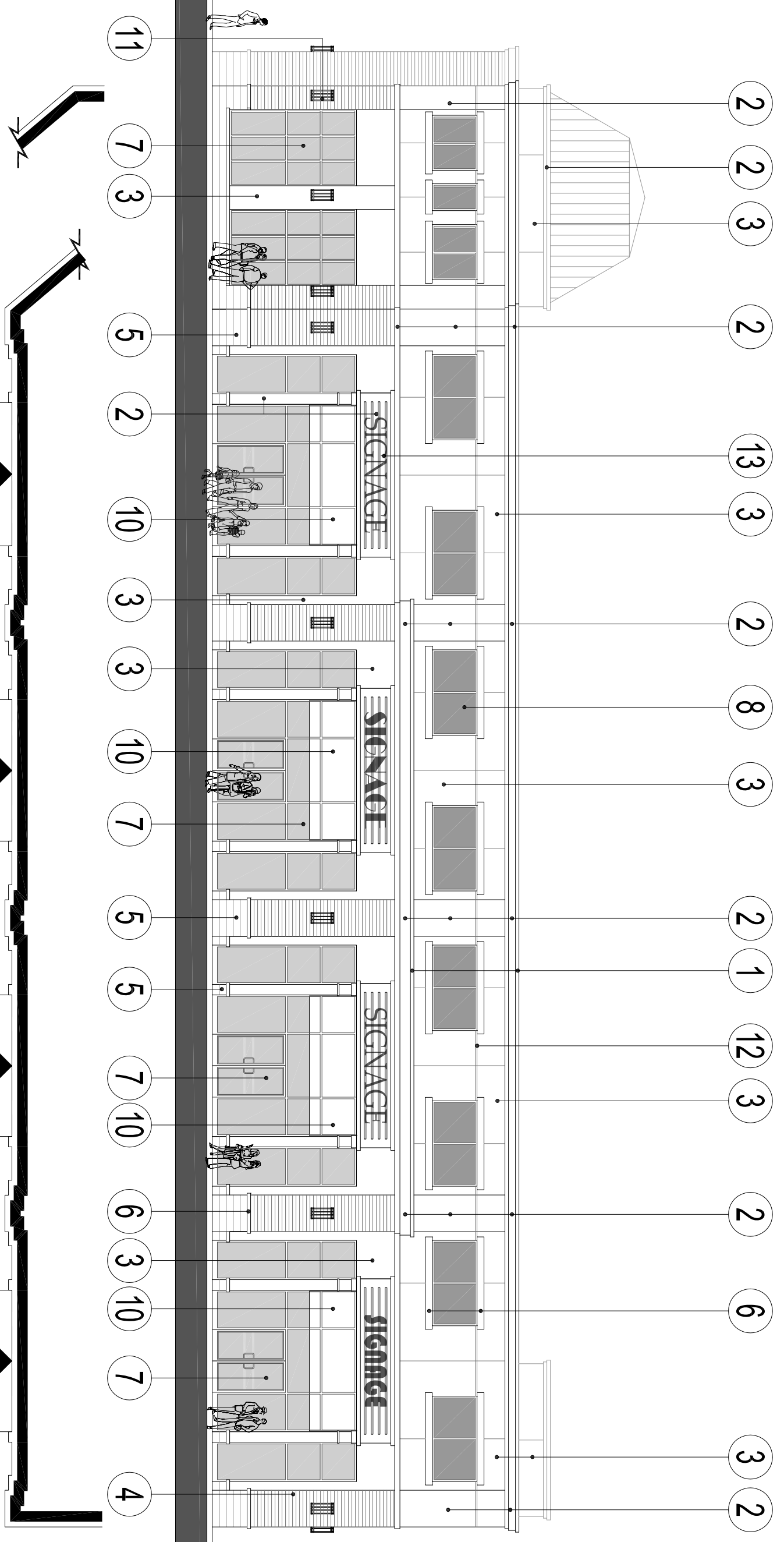


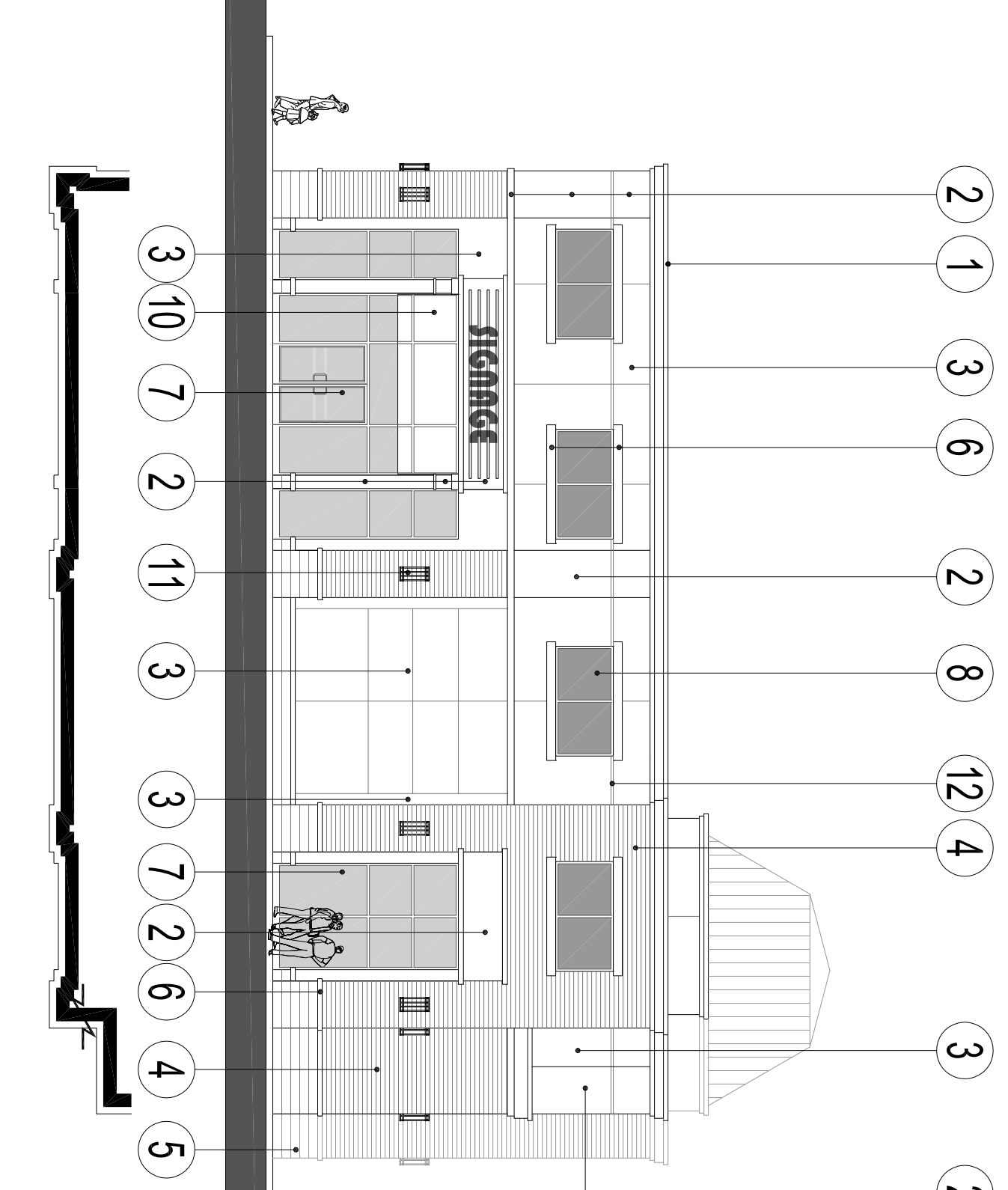
WEST (REAR) ELEVATION



SOUTH (SIDE) ELEVATION



EAST (FRONT) ELEVATION

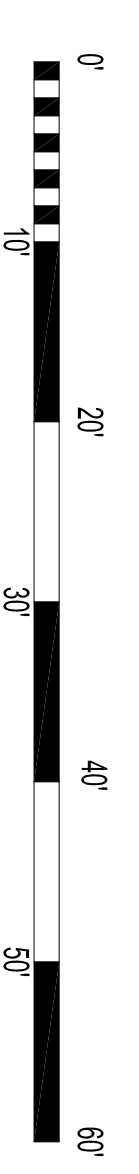


NORTH (SIDE) ELEVATION

- EXTERIOR MATERIALS & FINISHES:**
- 1- PRE-FINISHED METAL FLASHING - VICWEST - DM-1002 - D-MAX WHITE
 - 2- E.I.F.S. - DRYVIT - SANDBLAST - #101 - SUPER WHITE
 - 3- E.I.F.S. - DRYVIT - SANDBLAST - #449 - BUCKSKIN
 - 4- FACE BRICK - HANSON BRICK -TAUPE
 - 5- ARCHITECTURAL BLOCK - SHOULDICE - TAPESTRY - ULTRA WHITE
 - 6- ARCHITECTURAL SILLCAP - SHOULDICE - TAPESTRY - ULTRA WHITE
 - 7- GLAZING IN ALUMINUM FRAME - PREVOST : BRONZE ANOSPEC 546
 - 8- SPANDEL GLASS IN ALUMINUM FRAME - PREVOST : BRONZE ANOSPEC 546
 - 9- SLOPED METAL ROOF - COLOUR TO MATCH PREVOST : BRONZE ANOSPEC 546
 - 10- FABRIC AWNINGS - SUNBRELLA SUNBR4618 - WALNUT BROWN TWEED
 - 11- DECORATIVE LIGHT FIXTURE
 - 12- LARGE REVEALS
 - 13- ILLUMINATED SIGNAGE
 - 14- HOLLOW METAL DOOR - COLOUR TO MATCH #19

- 15- PRE-FINISHED OVERHEAD DOOR - COLOUR TO MATCH BRONZE ANOSPEC 546
- 16- ALUMINUM FRAME - COLOUR TO MATCH BRONZE ANOSPEC 546

NOTE: DOOR AND WINDOW LOCATIONS, DIMENSIONS, DETAILS AND BUILDING MATERIALS MAY VARY DEPENDING ON FINAL BUILDING LAYOUT, AND ARE SHOWN FOR INFORMATION PURPOSES ONLY.



COMMERCIAL DEVELOPMENT - BUILDING "I" - PROPOSED ELEVATIONS
LIMBANK ROAD & EARL ARMSTRONG ROAD - OTTAWA, ONTARIO

DATE ISSUED : 16-09-23

PROJECT # : 11159

