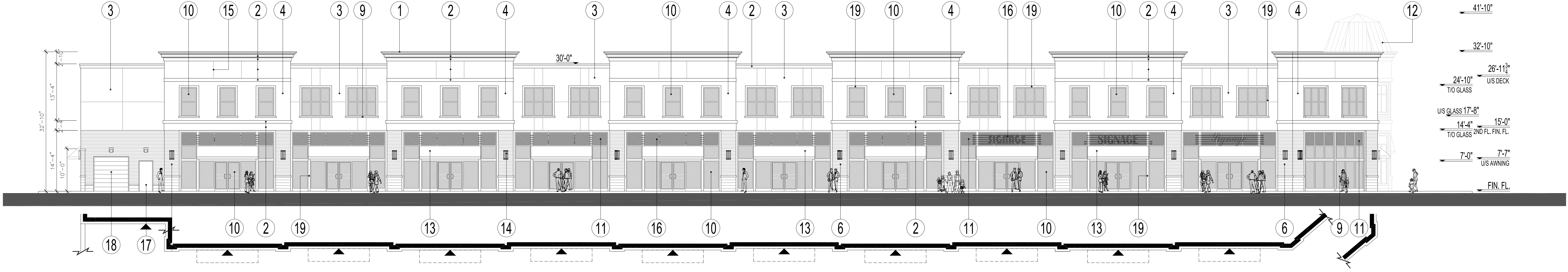
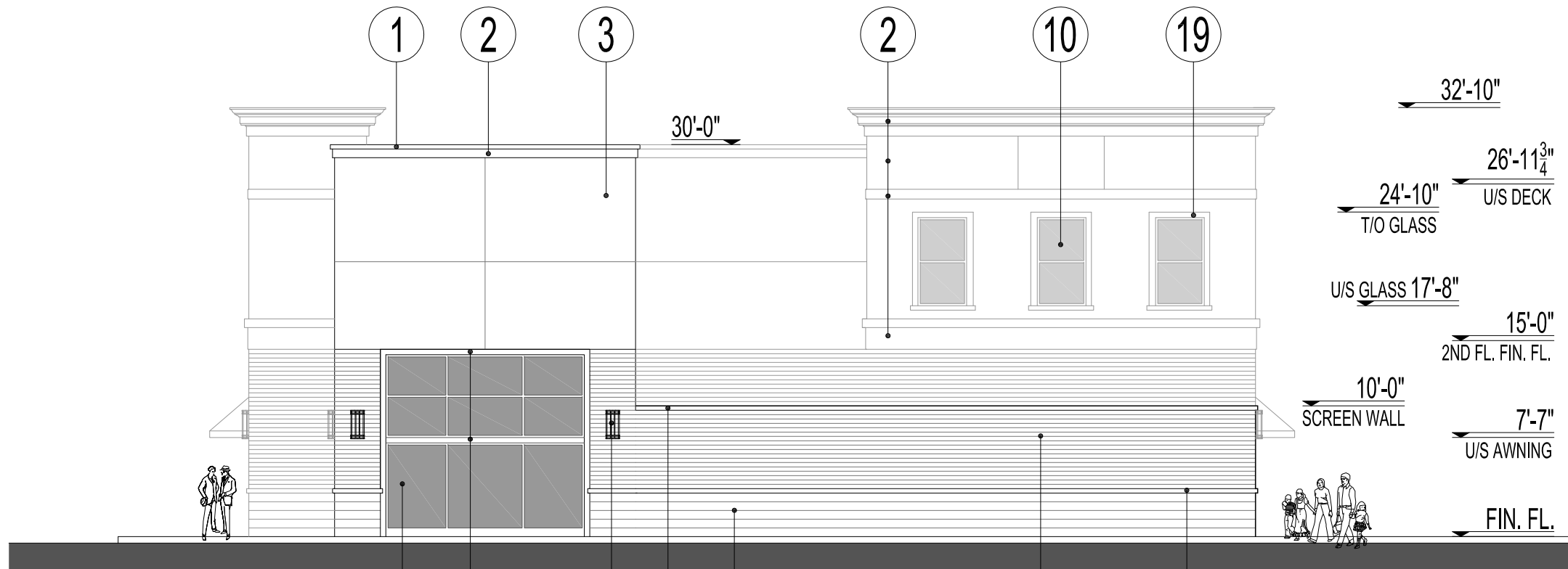




**SOUTH (REAR) ELEVATION**



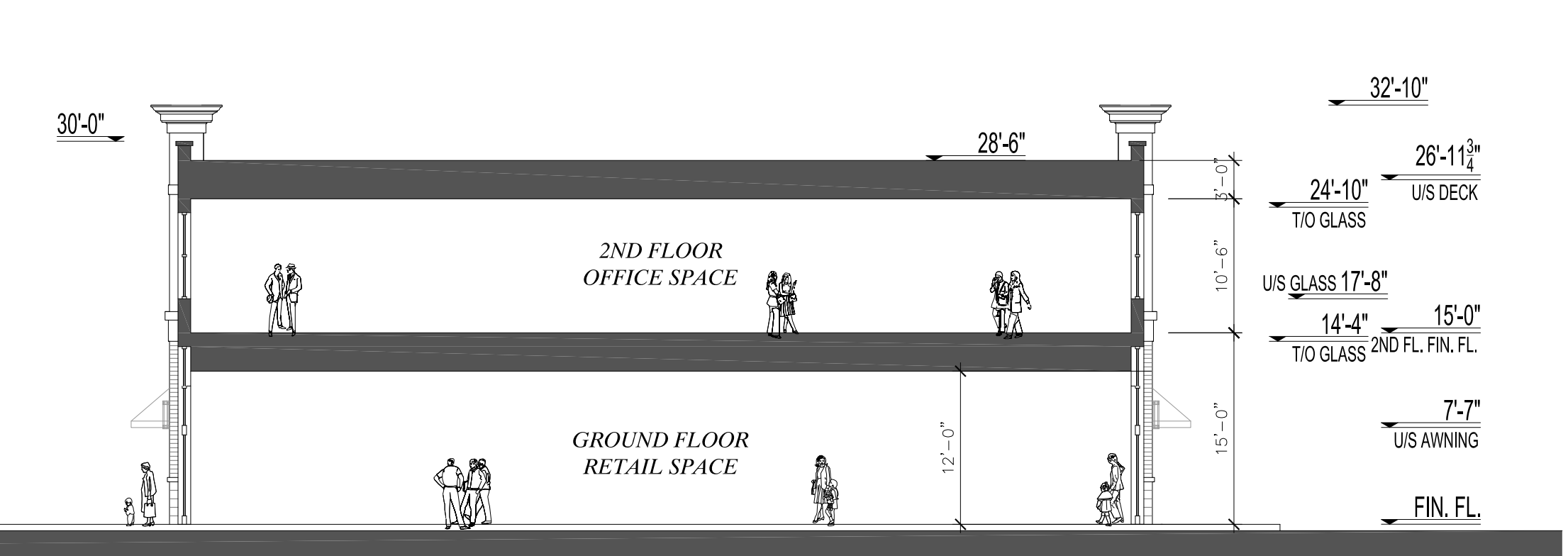
**NORTH (FRONT) ELEVATION**



**EAST (SIDE) ELEVATION**



**WEST (SIDE) ELEVATION**



**TYPICAL SECTION**

- EXTERIOR MATERIALS & FINISHES:**
- 1- PRE-FINISHED METAL FLASHING - VICWEST - DM-1002 - D-MAX WHITE
  - 2- E.I.F.S. - DRYVIT - SANDBLAST - #101 - SUPER WHITE
  - 3- E.I.F.S. - DRYVIT - SANDBLAST - #449 - BUCKSKIN
  - 4- E.I.F.S. - DRYVIT - SANDBLAST - ICI PAINT #A0573 CENTURY BROWN
  - 5- N/A
  - 6- FACE BRICK - HANSON BRICK - SONOMA MATTE
  - 7- ARCHITECTURAL BLOCK - SHOULDICE - TAPESTRY - ULTRA WHITE
  - 8- N/A
  - 9- ARCHITECTURAL SILL/CAP - SHOULDICE - TAPESTRY - ULTRA WHITE

- 10- GLAZING IN ALUMINUM FRAME - PREVOST : BRONZE ANOSPEC 546
- 11- REFLECTIVE SPANDREL GLASS IN ALUMINUM FRAME - PREVOST : BRONZE ANOSPEC 546
- 12- SLOPED METAL ROOF - COLOUR TO MATCH PREVOST : BRONZE ANOSPEC 546
- 13- FABRIC AWNINGS - SUNBRELLA SUNBR4618 - WALNUT BROWN TWEED
- 14- DECORATIVE LIGHT FIXTURE

- 15- REVEALS
- 16- ILLUMINATED SIGNAGE
- 17- HOLLOW METAL DOOR - COLOUR TO MATCH #19
- 18- PRE-FINISHED OVERHEAD DOOR - COLOUR TO MATCH BRONZE ANOSPEC 546
- 19- ALUMINUM FRAME - COLOUR TO MATCH BRONZE ANOSPEC 546

**APPROVED**  
By Lily Xu at 10:40 am, Oct 13, 2022

*Lily Xu*

LILY XU, MCIP, RPP  
MANAGER, DEVELOPMENT, REVIEW SOUTH  
PLANNING, INFRASTRUCTURE & ECONOMIC  
DEVELOPMENT DEPARTMENT, CITY OF OTTAWA

NOTE: DOOR AND WINDOW LOCATIONS, DIMENSIONS, DETAILS AND BUILDING MATERIALS MAY VARY DEPENDING ON FINAL BUILDING LAYOUT, AND ARE SHOWN FOR INFORMATION PURPOSES ONLY.

**COMMERCIAL DEVELOPMENT - BUILDING 'E' - PROPOSED ELEVATIONS**

LIMEBANK ROAD & EARL ARMSTRONG ROAD - OTTAWA, ONTARIO

DATE ISSUED : 15-08-14

PROJECT # : 11159

