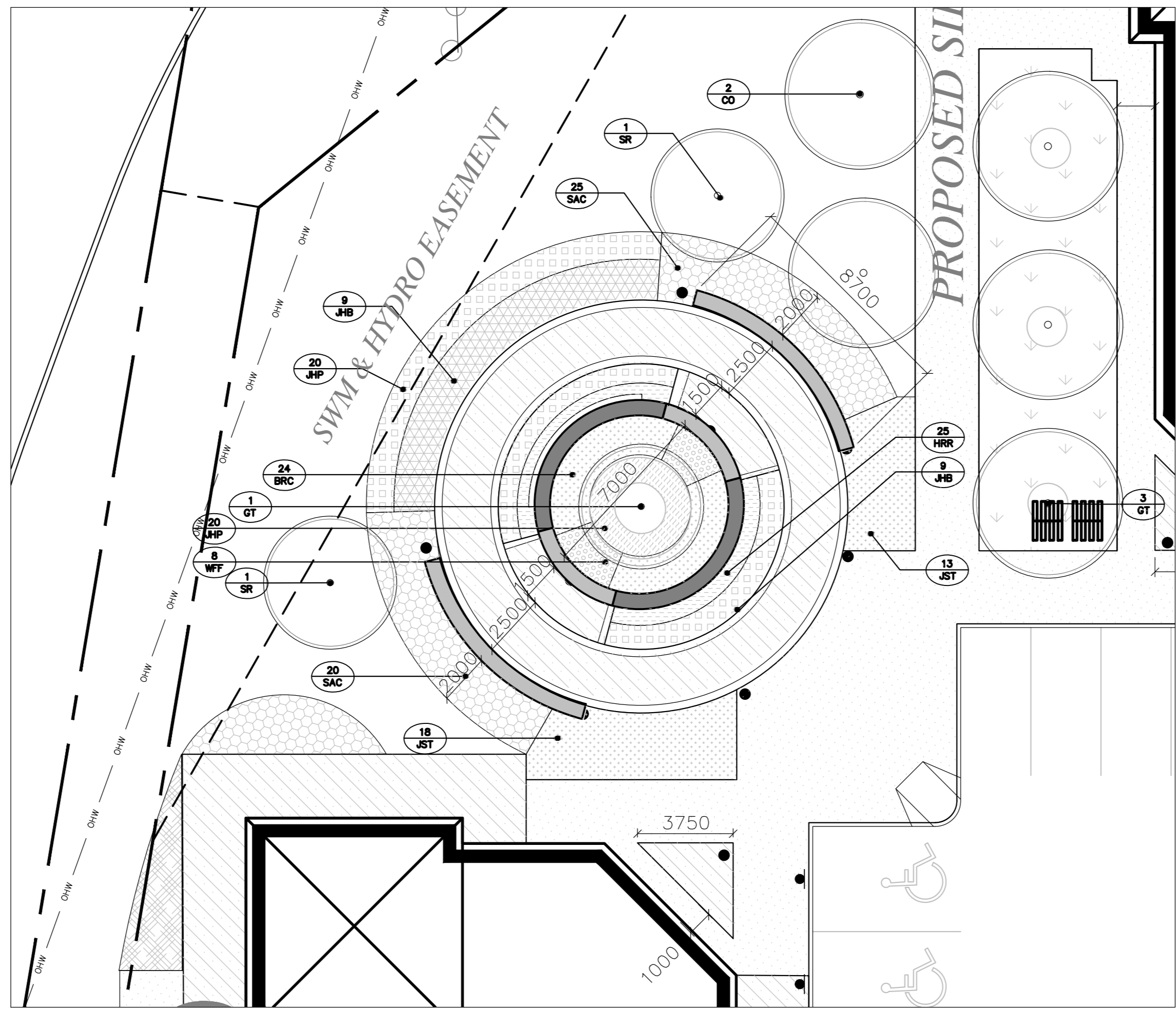
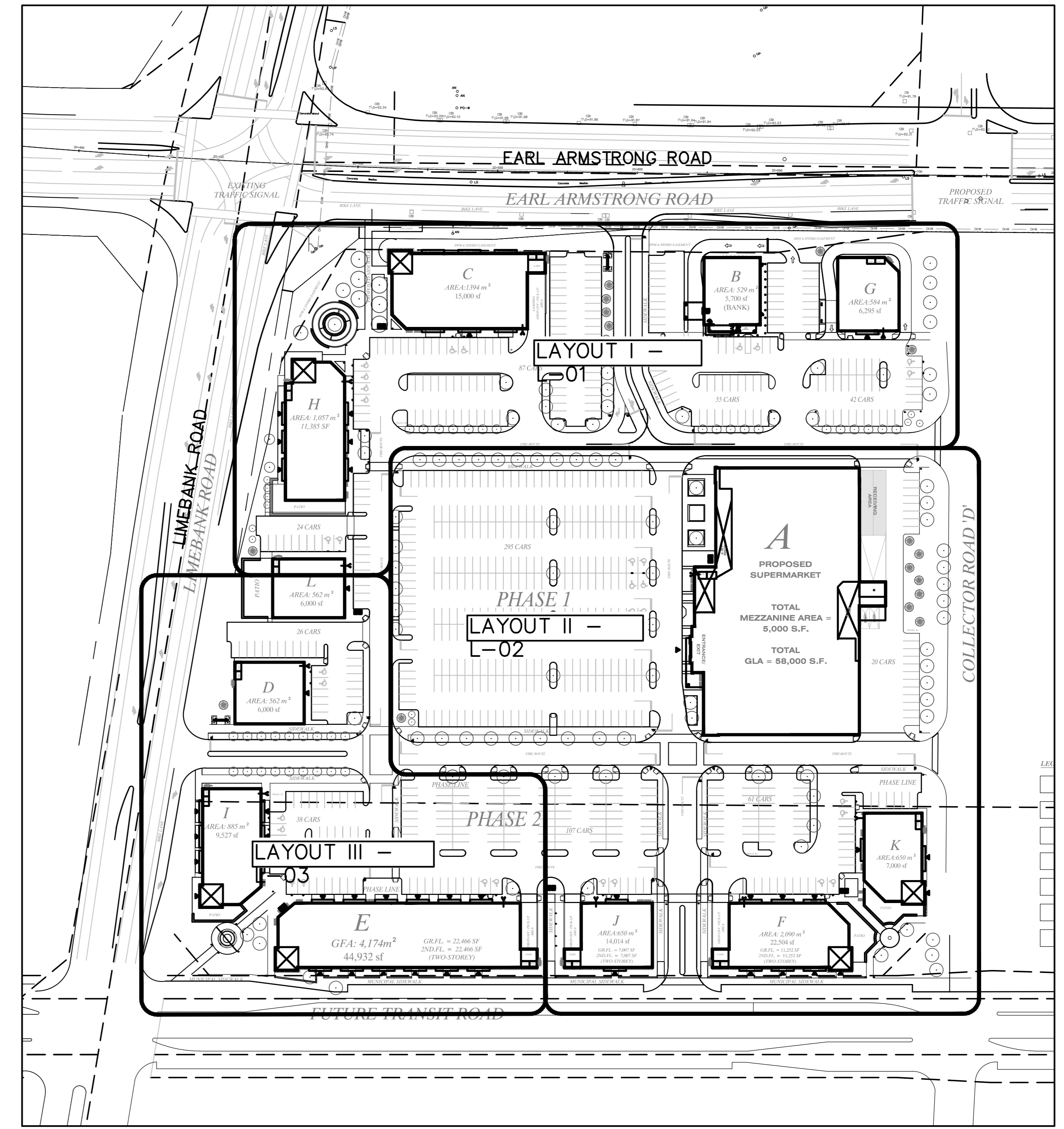


1 LAYOUT I 1:250



2 PLANTING DETAIL I N.T.S.

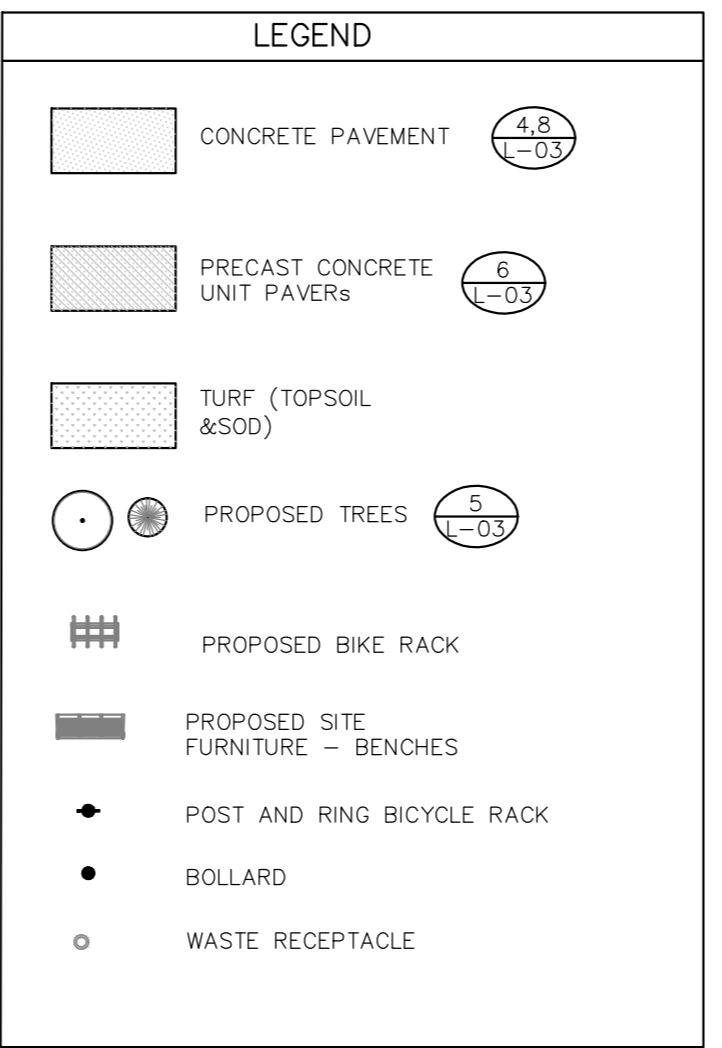


3 KEY PLAN 1:1000

SYM	BOTANICAL NAME	COMMON NAME	QTY	GRADE	COMMENTS
<b>DECIDUOUS TREES</b>					
AB	AMELANCHIER X GRANDIFLORA 'AUTUMN BRILLIANCE'	AUTUMN BRILLIANCE SERVICEBERRY	1	50mm CAL.	B.B./W.B.
CO	CELTIS OCCIDENTALIS	HACKBERRY	20	50mm CAL.	B.B./W.B.
GB	GINKGO BILOBA	GINKGO TREE	15	50mm CAL.	B.B./W.B.
GT	GLEDITSIA TRICANTHOS	HONEYLOCUST	6	70mm CAL.	B.B./W.B.
MBC	MALUS BACCATA 'COLUMARIAS'	COLUMARIAN SIBERIAN CRABAPPLE	13	50mm CAL.	B.B./W.B.
ND	MALUS 'DONALD WYMAN'	DONALD WYMAN CRABAPPLE	10	50mm CAL.	B.B./W.B.
SR	SYRINGA RETICULATA 'IVORY SILK'	IVORY SILK JAPANESE TREE LILAC	2	50mm CAL.	B.B./W.B.
TC	TILIA CORDATA	LITTLELEAF LINDEN	3	70mm CAL.	B.B./W.B.
UM	ULMUS 'WORTON'	ACCOLADE ELM	2	70mm CAL.	B.B./W.B.
<b>CONIFEROUS TREES</b>					
PA	PICEA ABIES	NORWAY SPRUCE	5	180cm HT.	B.B./W.B.
PG	PICEA GLAUCA	WHITE SPRUCE	1	180cm HT.	B.B./W.B.
PN	PICEA NIGRA 'ARNOLD SENTINEL'	ARNOLD SENTINEL AUSTRIAN PINE	2	180cm HT.	B.B./W.B.
<b>DECIDUOUS SHRUBS</b>					
BRC	BERBERIS THUNBERGII 'RUBY CAROUSEL'	RUBY CAROUSEL BARBERRY	24	50cm HT.	#5 CONTAINER - 1m OC
CSK	CORNUS SERICEA 'KELSEY'	KELSEY DOGWOOD	22	60cm HT.	#5 CONTAINER - 1m OC
FNG	FORSYTHIA 'NORTHERN GOLD'	NORTHERN GOLD FORSYTHIA	6	80cm HT.	#7 CONTAINER - 1.5m OC
HAA	HYDRANGEA ARBORESCENS 'ANNABELLE'	ANNABELLE HYDRANGEA	30	80cm HT.	#7 CONTAINER - 1m OC
POD	PHYSCOCARPUS OPUFOLIA 'DART'S GOLD'	DART'S GOLD NINEBARK	12	80cm HT.	#7 CONTAINER - 1.2m OC
PFA	POTENTILLA FRUTICOSA 'ABBOTSWOOD'	ABBOTSWOOD CINQUEFOIL	93	50cm HT.	#5 CONTAINER - 1m OC
RAG	RHUS AROMATICA 'GRO-LOW'	GRO-LOW FRAGRANT SUMAC	74	80cm SPR.	#7 CONTAINER - 1.5m OC
RRG	ROSA RUSSICA 'PINK GROOTENDORST'	PINK GROOTENDORST ROSE	74	80cm HT.	#7 CONTAINER - 1m OC
RPP	ROSA 'PURPLE PAVEMENT'	PURPLE PAVEMENT ROSE	24	50cm HT.	#5 CONTAINER - 1.2m OC
SSS	SOBARIA SORBIFOLIA 'SEM'	SEM FALSE SPIREA	53	50cm HT.	#5 CONTAINER - 1m OC
SBD	SPIRAEA BUMALDA 'DART'S RED'	DART'S RED SPIREA	73	50cm HT.	#5 CONTAINER - 80cm OC
SBG	SPIRAEA BUMALDA 'GOLDFLAME'	GOLDFLAME SPIREA	55	50cm HT.	#5 CONTAINER - 80cm OC
SJS	SPIRAEA JAPONICA 'SHROBANA'	SHROBANA SPIREA	27	50cm HT.	#5 CONTAINER - 1.5m OC
SMP	SYRINGA MEYERI 'PALIBIN'	D'BARF KOREAN LILAC	55	80cm SPR.	#7 CONTAINER - 1.5m OC
WFF	WEIGELA FLORIDA 'FINE WINE'	FINE WINE WEIGELA	8	50cm HT.	#5 CONTAINER - 1m OC
<b>CONIFEROUS SHRUBS</b>					
JHB	JUNIPERUS HORIZONTALIS 'BLUE CHIP'	BLUE CHIP JUNIPER	28	80cm SPR.	#7 CONTAINER - 1m OC
JHP	JUNIPERUS HORIZONTALIS 'PLUMOSA COMPACTA'	COMPACT ANDORRA JUNIPER	92	80cm SPR.	#7 CONTAINER - 1m OC
JST	JUNIPERUS SABINA 'TAMARISCOFOLIA'	TAM JUNIPER	129	80cm SPR.	#7 CONTAINER - 1.2m OC
<b>GRASSES</b>					
CAK	CALAMAGROSTIS ACUTIFLORA 'KARL FOERSTER'	KARL FOERSTER FEATHER REED GRASS	74	#2 CONTAINER	1m OC
HSS	HELICTOTRICHON SEMPERVIRENS 'SAPPHIRE BLUE'	SAPPHIRE BLUE OAT GRASS	38	#2 CONTAINER	60cm OC
MSP	MISCANTHUS SINENSIS 'PURPURESCENS'	FLAME GRASS	12	#2 CONTAINER	1m OC

SYM	BOTANICAL NAME	COMMON NAME	QTY	GRADE	COMMENTS
TCE	TAXUS CUSPIDATA 'EMERALD SPREADER'	EMERALD SPREADER YEW	33	80cm SPR.	#7 CONTAINER - 1.2m OC
TMW	TAXUS X MEDIA 'WARDI'	WARD'S YEW	69	60cm SPR.	#5 CONTAINER - 1.2m OC
<b>PERENNIALS</b>					
HHR	HEMEROCALLIS 'HAPPY RETURNS'	HAPPY RETURNS DAYLILY	75	#2 CONTAINER	45cm OC
HRR	HEMEROCALLIS 'ROSY RETURNS'	ROSY RETURNS DAYLILY	25	#2 CONTAINER	45cm OC
NRW	NEPETA RACEMOSA 'WALKER'S LOW'	WALKER'S LOW CATMINT	50	#2 CONTAINER	60cm OC
SSM	SALVIA X SYLVESTRIS 'MAY NIGHT'	MAY NIGHT SAGE	15	#2 CONTAINER	45cm OC
SAJ	SEDUM 'AUTUMN JOY'	AUTUMN JOY SEDUM	20	#2 CONTAINER	60cm OC

- NOTES**
- FOR GRADES, TEXTURED CROSSWALKS AND DRIVE AISLES, REFER TO CIVIL.
  - ALL CITY SIDEWALK TO SC2.
  - FOR EXISTING TREES AND TOR, REFER TO ENVIRONMENTAL IMPACT STATEMENT.



2014-08-19

3 REVISED AS PER COMMENTS

2 SUBMITTED FOR SPA 2014-04-08

1 FOR REVIEW 2014-03-10

**NO. ISSUE & REVISIONS DATE**

- The General Contractor shall verify all conditions in the field and report any discrepancies to the Landscape Architect prior to construction.
- Any areas outside the limit of work damaged by the General Contractor shall be restored by the General Contractor to the satisfaction of the contract administrator at no additional cost to the Owner.
- All underground utilities to be located by the General Contractor prior to the commencement of any work.
- This drawing is a portion of a complete project and shall be read in conjunction with all other drawings, specifications and tender documents related to the project, regardless of origin.
- All measurements in millimeters unless otherwise noted.

SEAL

**FOTENN**

PROJECT NORTH

PROJECT: RIVERSIDE SOUTH SHOPPING CENTRE  
1420 EARL ARMSTRONG ROAD  
OTTAWA, ONTARIO

DRAWING: LANDSCAPE PLAN I

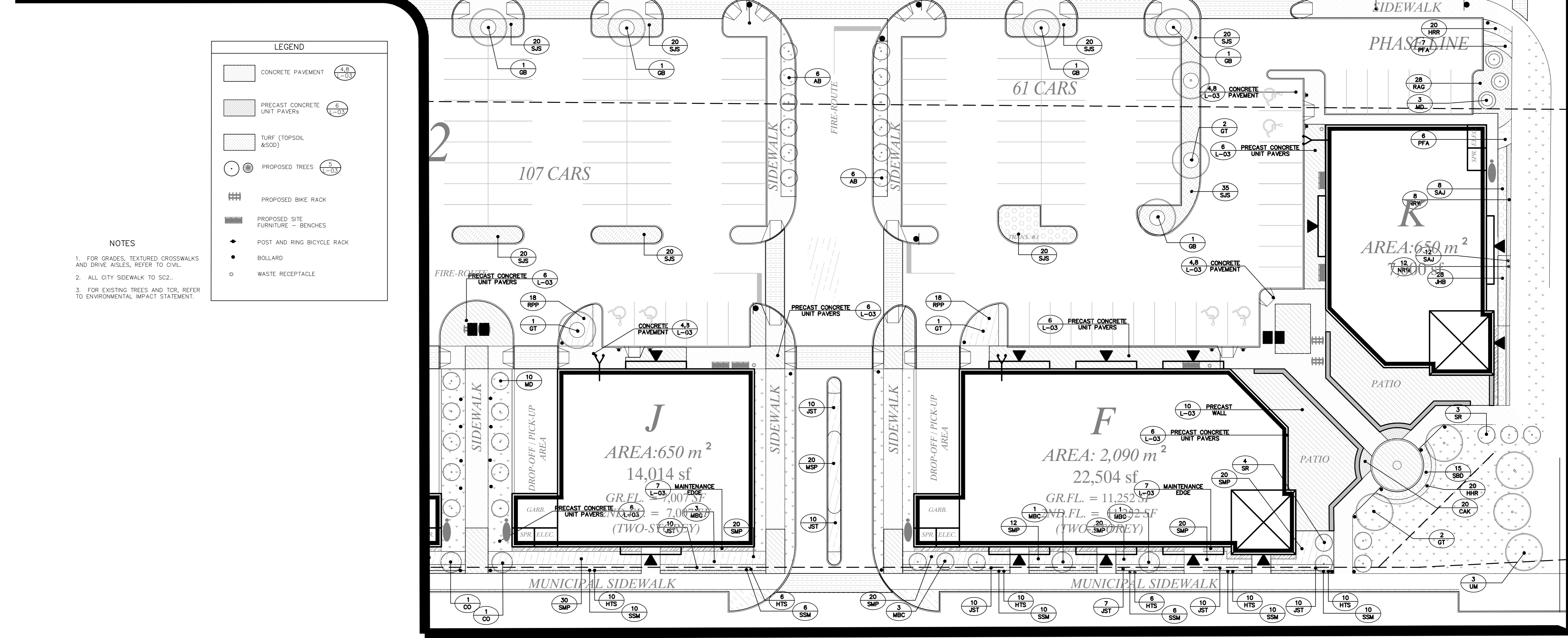
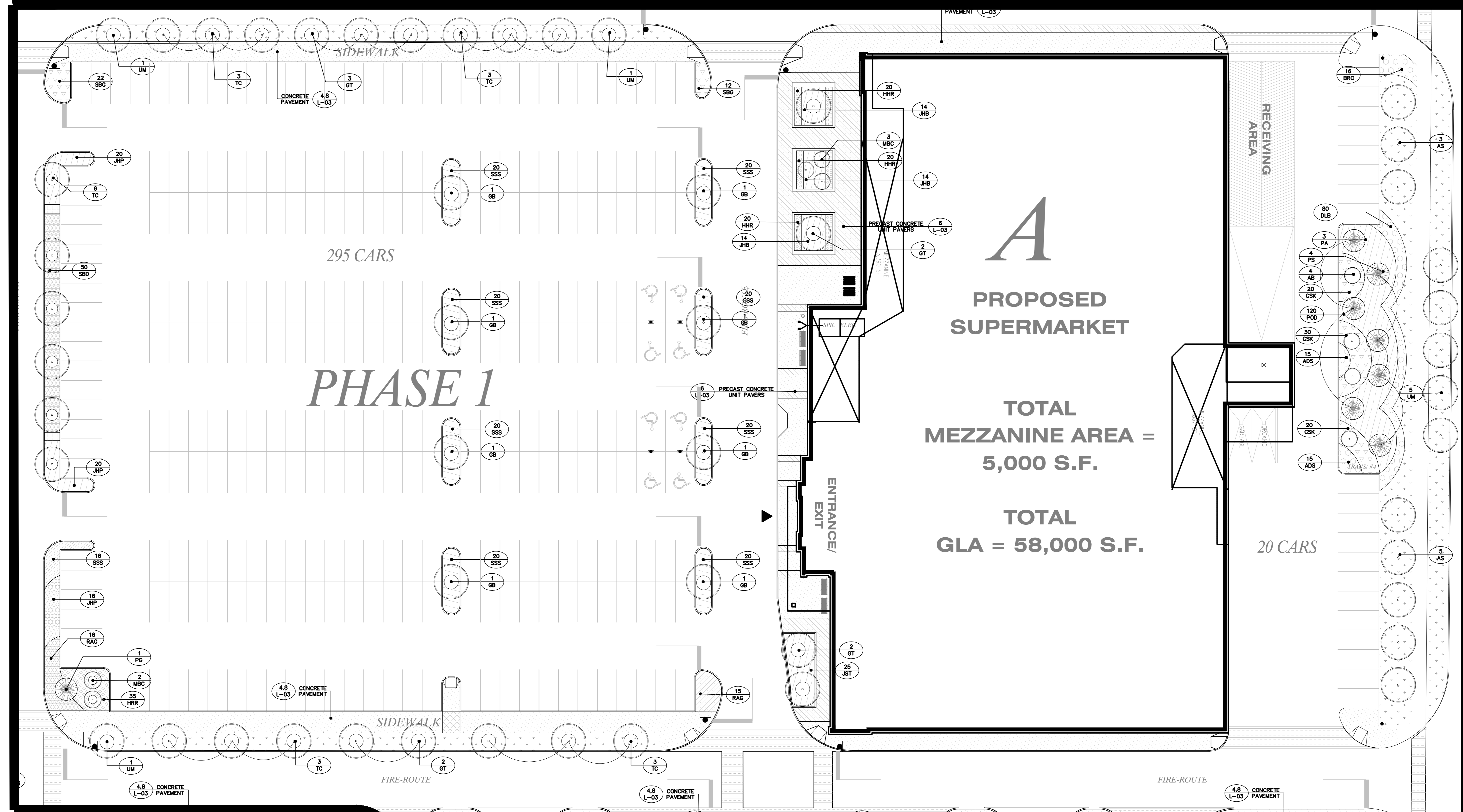
SCALE: AS NOTED DRAWING NO. L-01

DRAWN: LM

CHECKED: LM

DATE: 2014-02-07 REVISION NO. 00

SYM	BOTANICAL NAME	COMMON NAME	QTY	GRADE	COMMENTS
	DECIDUOUS TREES				
AS	ACER SACCHARUM	SUGAR MAPLE	5	70mm CAL.	B.B./W.B.
AB	AMELANCHIER X GRANDIFLORA	AUTUMN BRILLIANCE SERVICEBERRY	19	50mm CAL.	B.B./W.B.
CO	CELTIS OCCIDENTALIS	HACKBERRY	2	50mm CAL.	B.B./W.B.
GB	GINKGO BILOBA	GINKGO TREE	10	50mm CAL.	B.B./W.B.
GT	GLEDTISIA TRICANTHOS	HONEYLOCUST	14	70mm CAL.	B.B./W.B.
MBC	MALUS BACCATA 'COLUMNARIS'	COLUMNAR SIBERIAN CRABAPPLE	14	50mm CAL.	B.B./W.B.
MD	MALUS 'DONALD WYMAN'	DONALD WYMAN CRABAPPLE	13	50mm CAL.	B.B./W.B.
SR	SYRINGA RETICULATA 'IVORY SILK'	IVORY SILK JAPANESE TREE LILAC	7	50mm CAL.	B.B./W.B.
TC	TILIA CORDATA	LITTLELEAF LINDEN	18	70mm CAL.	B.B./W.B.
UM	ULMUS 'MORTON'	ACCOLADE ELM	9	70mm CAL.	B.B./W.B.
	CONIFEROUS TREES				
PA	PICEA ABIES	NORWAY SPRUCE	3	180cm HT.	B.B./W.B.
PG	PICEA GLAUCA	WHITE SPRUCE	5	180cm HT.	B.B./W.B.
	DECIDUOUS SHRUBS				
BRC	BERBERIS THUNBERGII 'RUBY CAROUSEL'	RUBY CAROUSEL BARBERRY	16	50cm HT.	#5 CONTAINER - 1m OC
CSK	CORNUS SERICEA 'KELSEY'	KELSEY DOGWOOD	70	60cm HT.	#7 CONTAINER - 1m OC
DLB	DIERVILLA LONICERA 'BUTTERFLY'	BUTTERFLY BUSH	80	60cm HT.	#7 CONTAINER - 1m OC
POD	PHYSCOCARPUS OPIFOLIA 'DART'S GOLD'	DART'S GOLD NINEBARK	120	80cm HT.	#7 CONTAINER - 1.2m OC
PFA	POTENTILLA FRUTICOSA 'ABBOTSWOOD'	ABBOTSWOOD CINQUEFOIL	13	50cm HT.	#5 CONTAINER - 1m OC
RAG	RHUS ARNIMATICA 'GRO-LOW'	GRO-LOW FRAGRANT SUMAC	59	80cm SPR.	#7 CONTAINER - 1.5m OC
RPP	ROSA 'PURPLE PAVEMENT'	PURPLE PAVEMENT ROSE	18	50cm HT.	#5 CONTAINER - 1m OC
SSS	SOBARIA SORBIFOLIA 'SEM'	SEM FALSE SPIREA	136	50cm HT.	#5 CONTAINER - 1m OC
SBD	SPIRAEA BUMALDA 'DART'S RED'	DART'S RED SPIREA	75	50cm HT.	#5 CONTAINER - 80cm OC
SBC	SPIRAEA BUMALDA 'GOLDFLAME'	GOLDFLAME SPIREA	34	50cm HT.	#5 CONTAINER - 80cm OC
SJS	SPIRAEA JAPONICA 'SHIROBANA'	SHIROBANA SPIREA	175	50cm HT.	#5 CONTAINER - 80cm OC
SMP	SYRINGA MEYERI 'PALIBI'	DWARF KOREAN LILAC	162	80cm SPR.	#7 CONTAINER - 1.5m OC
	CONIFEROUS SHRUBS				
JHB	JUNIPERUS HORIZONTALIS 'BLUE CHIP'	BLUE CHIP JUNIPER	70	80cm SPR.	#7 CONTAINER - 1m OC
JH	JUNIPERUS HORIZONTALIS 'PLUMOSA COMPACTA'	COMPACT ANDORRA JUNIPER	56	80cm SPR.	#7 CONTAINER - 1m OC
JST	JUNIPERUS SABINA 'TAMARISIFOLIA'	TAM JUNIPER	92	80cm SPR.	#7 CONTAINER - 1.2m OC
	PERENNIALS				
ADS	ASTER DUMOSUS 'SAPPHIRE'	SAPPHIRE ASTER	30	#2 CONTAINER	45cm OC
HTS	HELIOPSIS 'TUSCAN FUN'	TUSCAN SUN FALSE SUNFLOWER	52	#2 CONTAINER	45cm OC
HRR	HEMEROCALLIS 'HAPPY RETURNS'	HAPPY RETURNS DAYLILY	80	#2 CONTAINER	45cm OC
HRR	HEMEROCALLIS 'ROSY RETURNS'	ROSY RETURNS DAYLILY	55	#2 CONTAINER	45cm OC
NRW	NEPETA RACEMOSA 'WALKER'S LOW'	WALKER'S LOW CATMINT	20	#2 CONTAINER	60cm OC
SSM	SALVIA X SYLVESTRIS 'MAY NIGHT'	MAY NIGHT SAGE	52	#2 CONTAINER	45cm OC
SAJ	SEDUM 'AUTUMN JOY'	AUTUMN JOY SEDUM	20	#2 CONTAINER	60cm OC
	GRASSES				
CAK	CALAMAGROSTIS ACUTIFLORA 'KARL FOEBSTER FEATHER REED GRASS'	KARL FOEBSTER FEATHER REED GRASS	20	#2 CONTAINER	1m OC
MSP	MISCANTHUS SINENSIS 'PURPURASCENS'	FLAME GRASS	20	#2 CONTAINER	1m OC



**LEGEND**

- CONCRETE PAVEMENT (4.8 L-03)
- PRECAST CONCRETE UNIT PAVERS (6 L-03)
- TURF (TOPSOIL 4550)
- PROPOSED TREES (5 L-03)
- PROPOSED BIKE RACK
- PROPOSED SITE FURNITURE - BENCHES
- POST AND RING BICYCLE RACK
- BOLLARD
- WASTE RECEPTACLE

**NOTES**

- FOR GRADES, TEXTURED CROSSEWALKS AND DRIVE AISLES, REFER TO CIVIL.
- ALL CITY SIDEWALK TO SC2.
- FOR EXISTING TREES AND TOR, REFER TO ENVIRONMENTAL IMPACT STATEMENT.

3	REVISED AS PER COMMENTS	2014-05B-15
2	SUBMITTED FOR SPA	2014-04-08
1	FOR REVIEW	2014-03-10
<b>NO. ISSUE &amp; REVISIONS</b>		
		DATE

1. The General Contractor shall verify all conditions in the field and report any discrepancies to the Landscape Architect prior to construction.

2. Any areas outside the limit of work damaged by the General Contractor shall be restored by the General Contractor to the satisfaction of the contract administrator at no additional cost to the Owner.

3. All underground utilities to be located by the General Contractor prior to the commencement of any work.

4. This drawing is a portion of a complete project and shall be read in conjunction with all other drawings, specifications and tender documents related to the project, regardless of origin.

5. All measurements in millimeters unless otherwise noted.

SEAL

PROFESSIONAL OF LANDSCAPE ARCHITECTURE

**FOTENN**

PROJECT NORTH

PROJECT: RIVERSIDE SOUTH SHOPPING CENTRE  
1420 EARL ARMSTRONG ROAD  
OTTAWA, ONTARIO

DRAWING: LANDSCAPE PLAN II

SCALE: 1:250

DRAWING NO. L-02

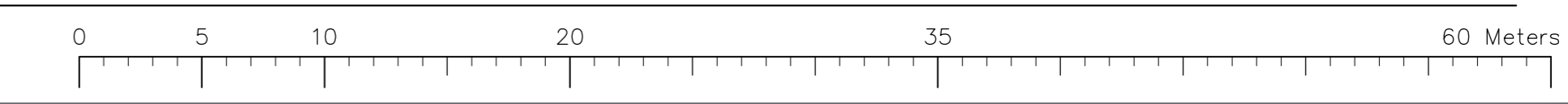
DRAWN: LM

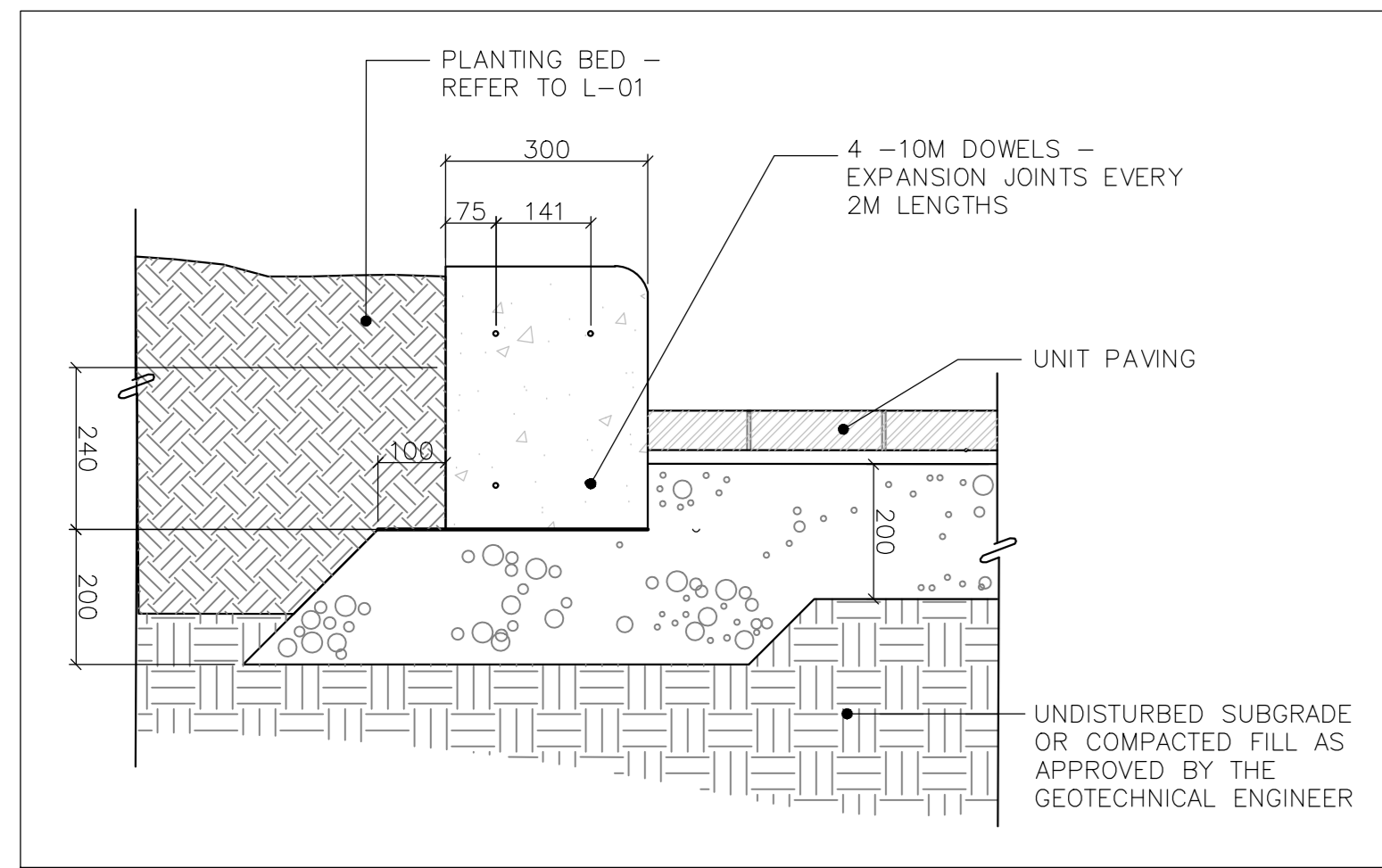
CHECKED: LM

DATE: 2014-02-07

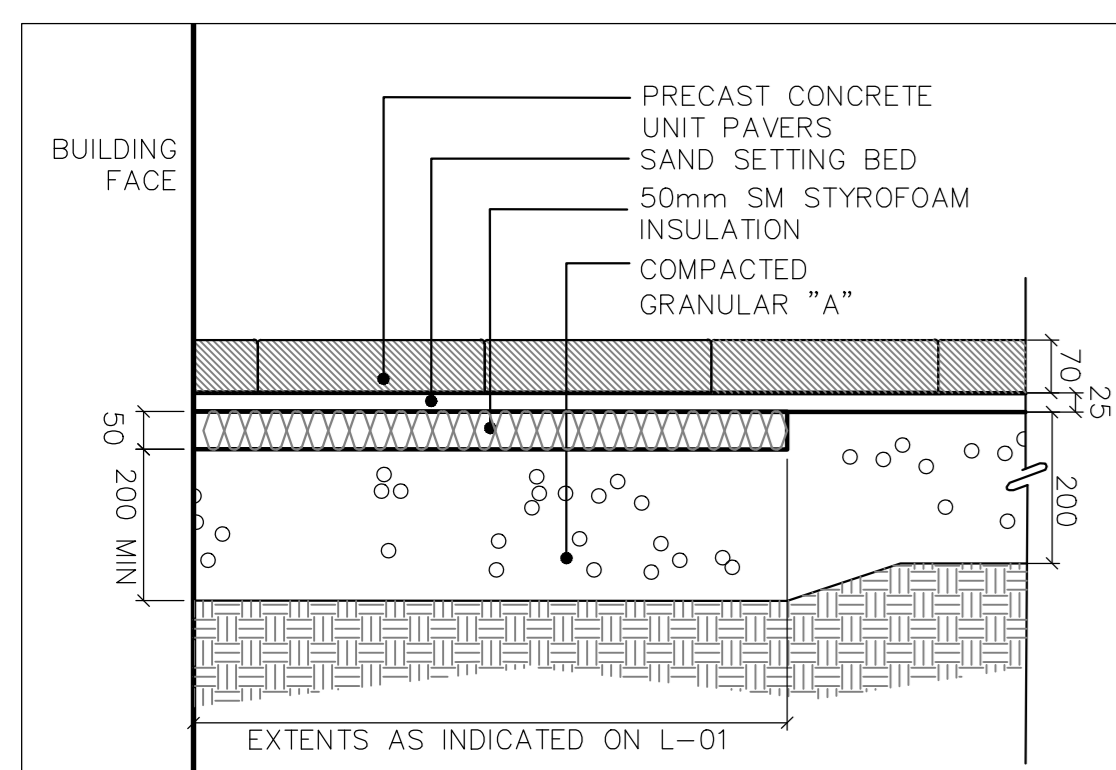
REVISION NO. 00

1 LAYOUT II  
L-02

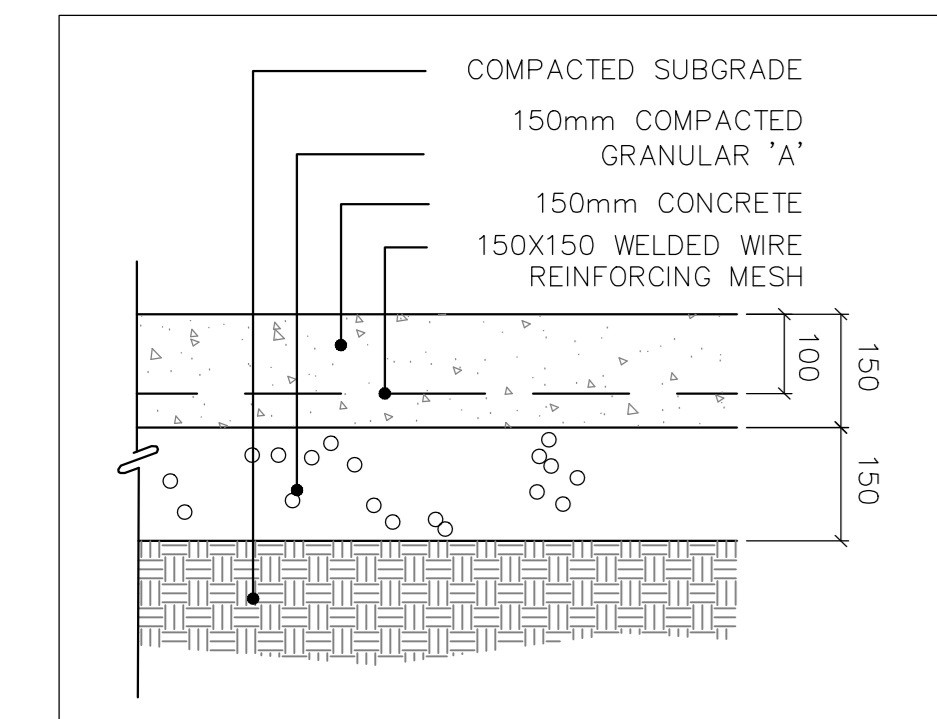




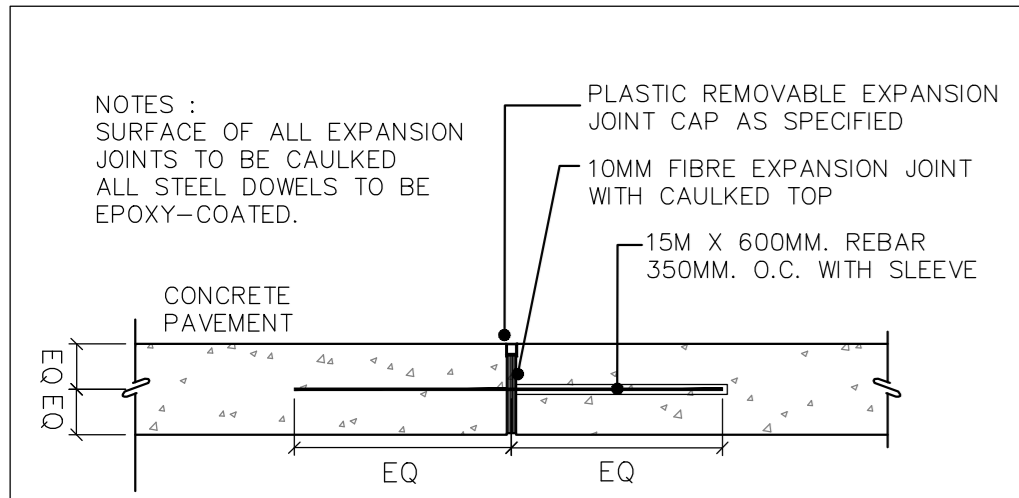
11 PLANTING CURB N.T.S.



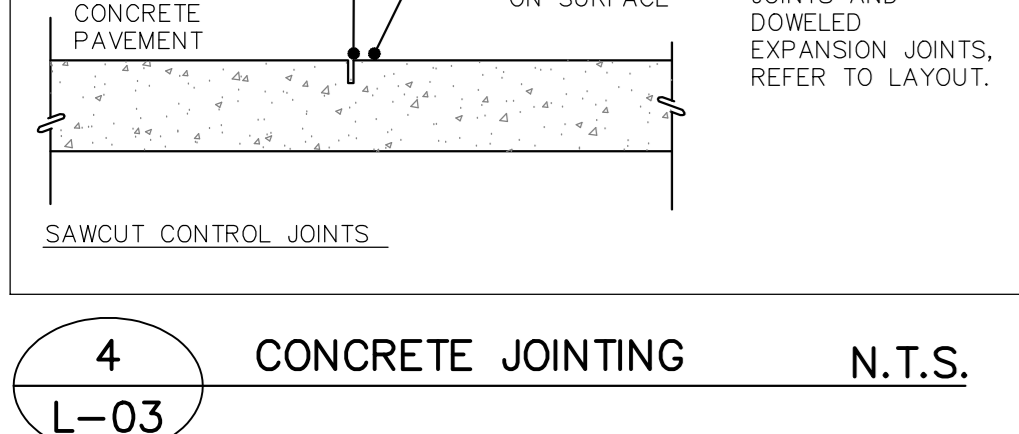
9 INSULATION AT BUILDING ENTRANCES N.T.S.



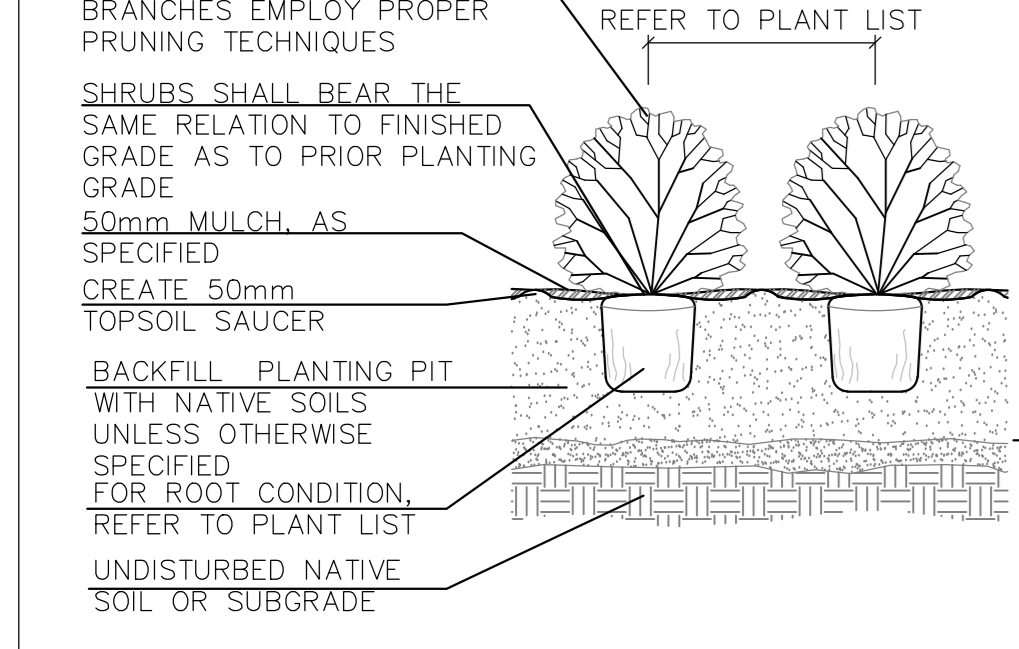
8 CONCRETE PAVEMENT N.T.S.



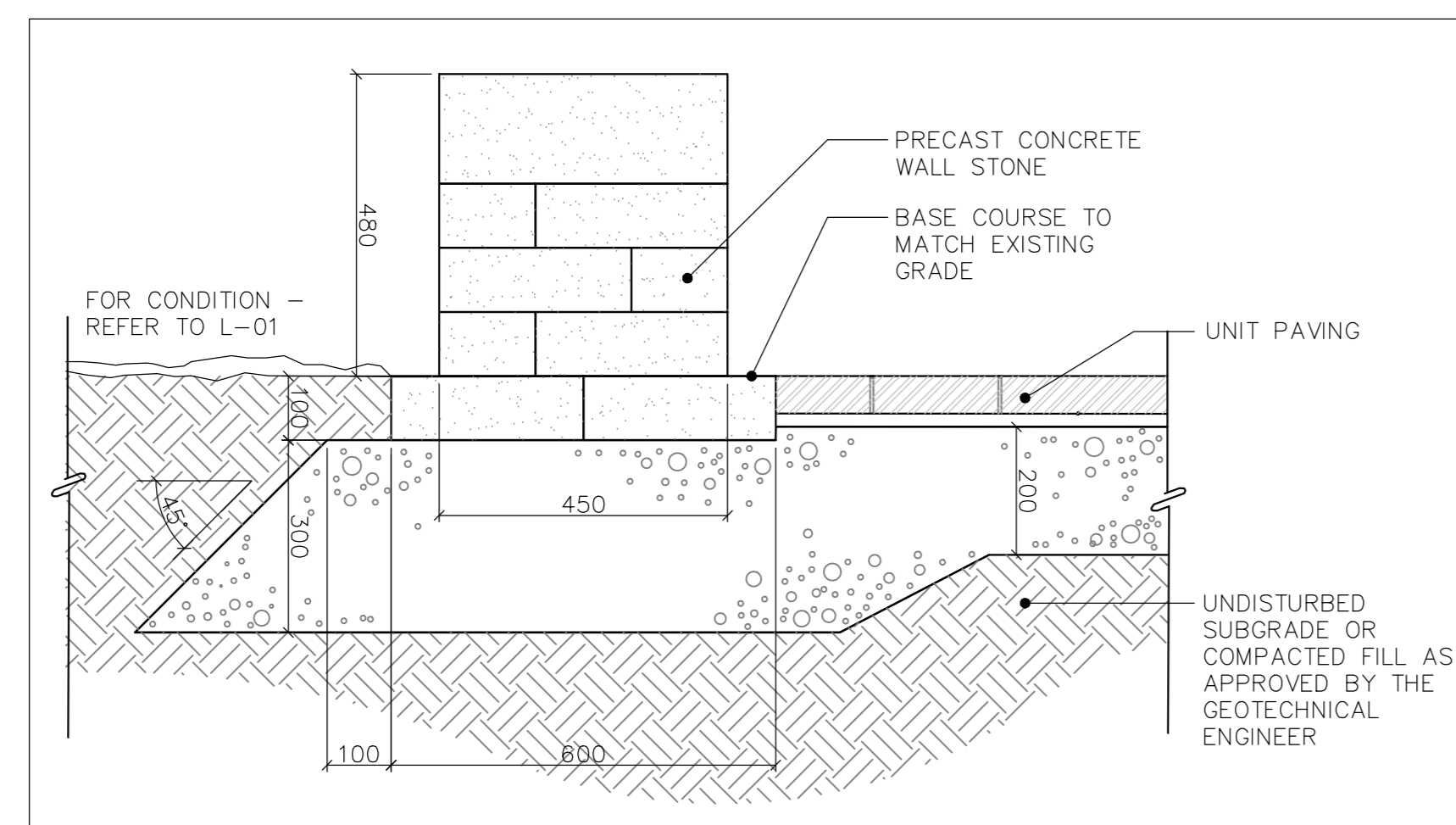
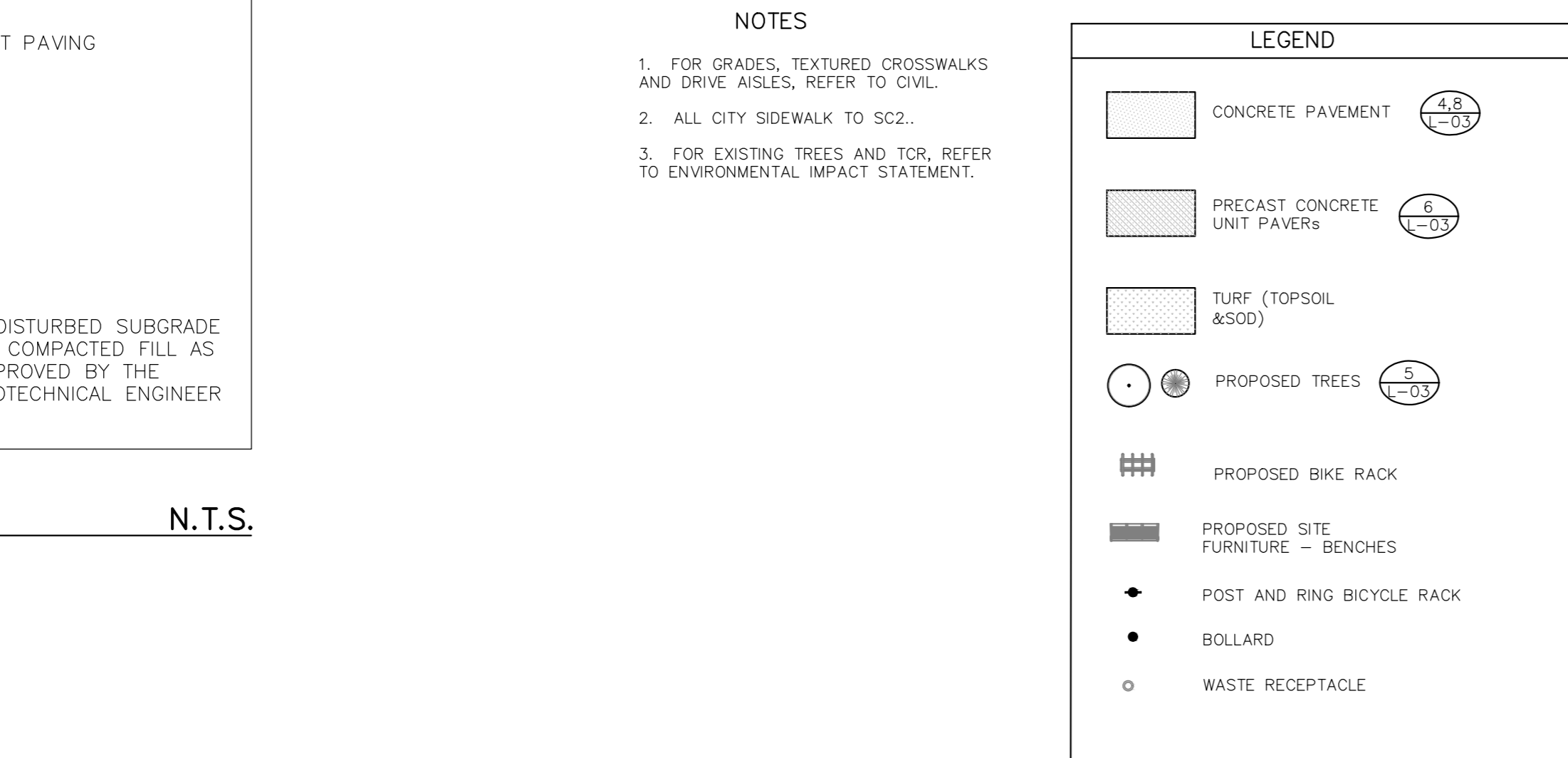
4 CONCRETE JOINTING N.T.S.



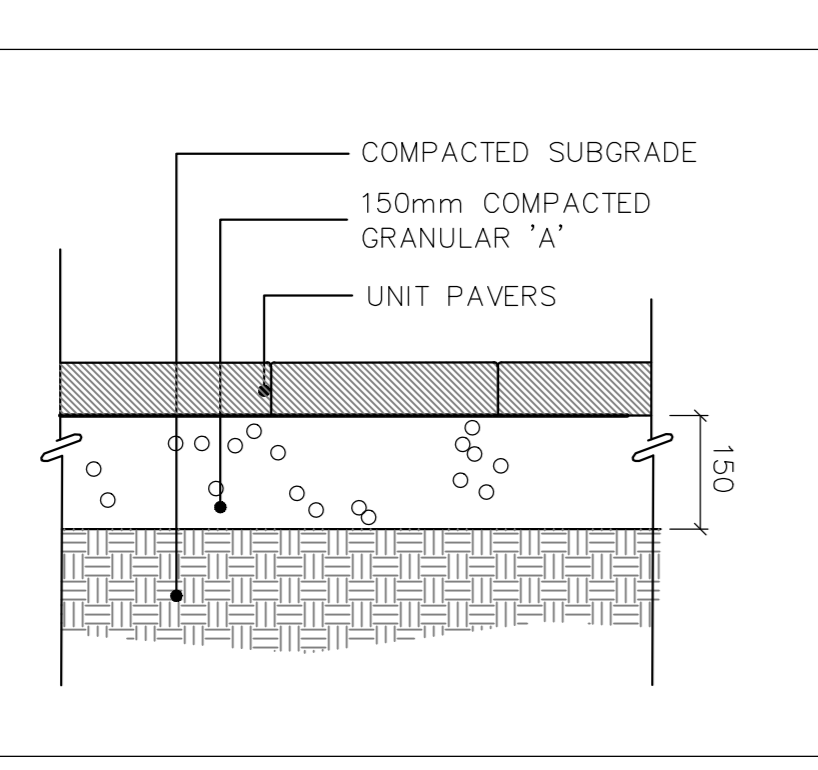
3 SHRUB PLANTING N.T.S.



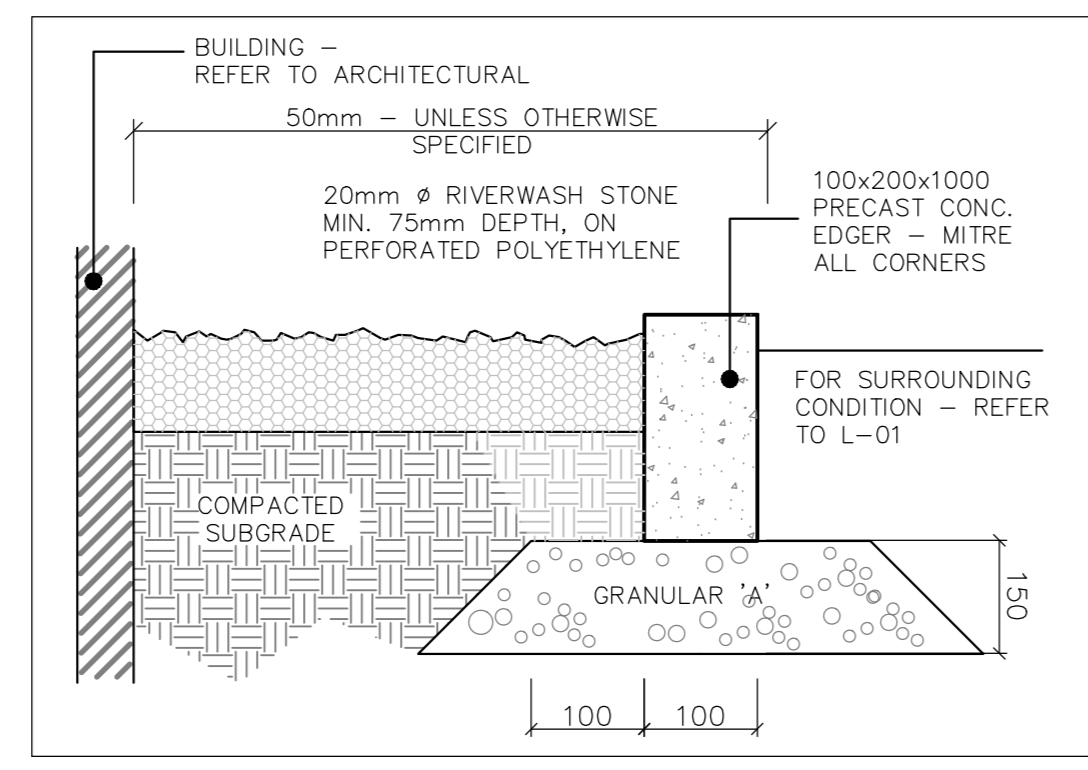
5 TREE PLANTING N.T.S.



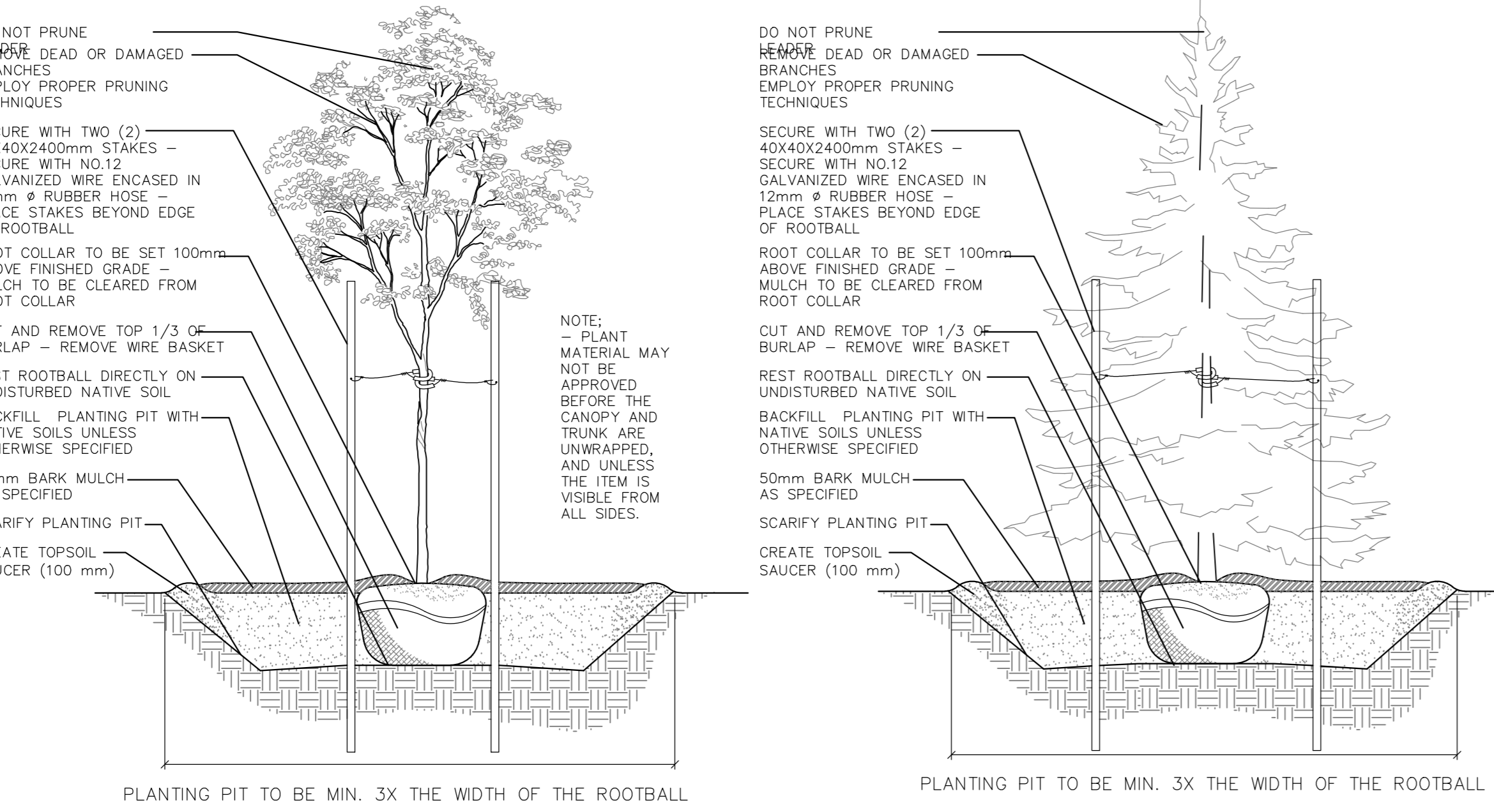
10 PRECAST CONCRETE WALL N.T.S.



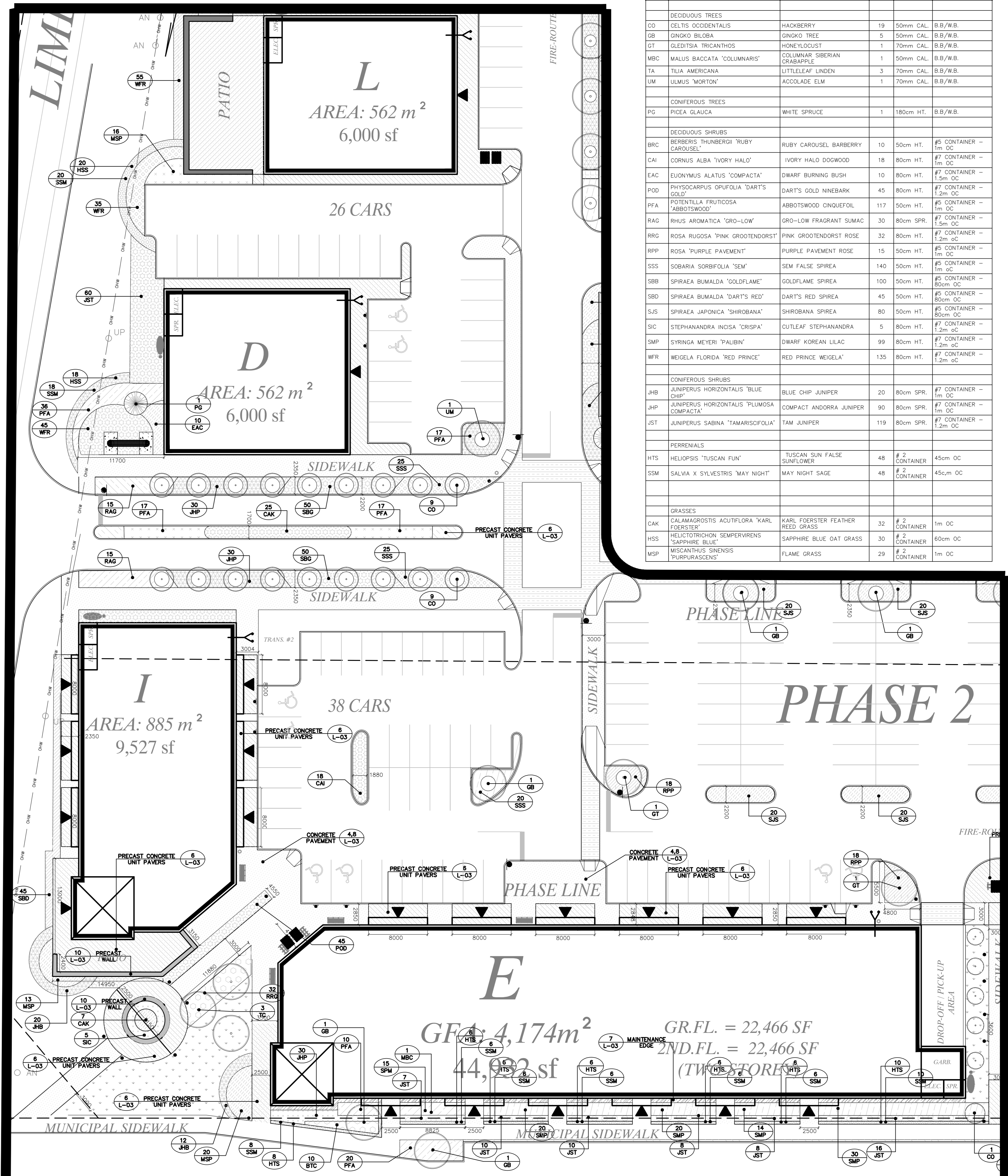
6 PRECAST CONCRETE UNIT PAVING N.T.S.



7 MAINTENANCE EDGE N.T.S.



1 LAYOUT III

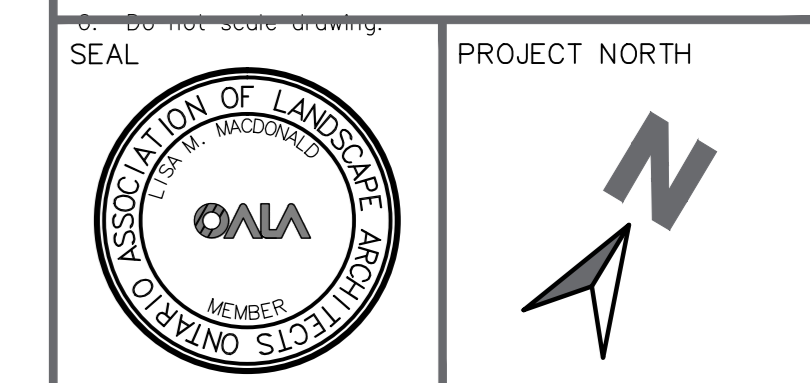


1 LAYOUT III

SYM	BOTANICAL NAME	COMMON NAME	QTY	GRADE	COMMENTS
CO	CELTIS OCCIDENTALIS	HACKBERRY	19	50mm CAL.	B.B./B.
GB	GINKGO BILOBA	GINKGO TREE	5	50mm CAL.	B.B./B.
GT	GLEDITSIA TRICANTHOS	HONEYLOCUST	1	70mm CAL.	B.B./B.
MBC	MALUS BACCATA 'COLUMARIAS'	COLUMNAR SIBERIAN CRABAPPLE	1	50mm CAL.	B.B./B.
TA	TILIA AMERICANA	LITTLELEAF LINDEN	3	70mm CAL.	B.B./B.
UM	ULMUS 'MORTON'	ACCOLADE ELM	1	70mm CAL.	B.B./B.
CONIFEROUS TREES					
PG	PICEA GLAUCA	WHITE SPRUCE	1	180cm HT.	B.B./B.
DECIDUOUS SHRUBS					
BRC	BERBERIS THUNBERGII 'RUBY CAROUSEL'	RUBY CAROUSEL BARBERY	10	50cm HT.	#5 CONTAINER - 1m OC
CAI	CORNUS ALBA 'IVORY HALO'	IVORY HALO DOGWOOD	18	80cm HT.	#7 CONTAINER - 1m OC
EAC	EUONYMUS ALATUS 'COMPACTA'	DWARF BURNING BUSH	10	80cm HT.	#7 CONTAINER - 1.2m OC
POD	PHYSCARPUS OPUFOLIA 'DART'S GOLD'	DART'S GOLD NINEBARK	45	80cm HT.	#7 CONTAINER - 1.2m OC
FFA	POTENTILLA FRUTICOSA 'ABBOTSWOOD'	ABBOTSWOOD CINQUEFOIL	117	50cm HT.	#7 CONTAINER - 1m OC
RAG	RHUS AROMATICA 'GRO-LOW'	GRO-LOW FRAGRANT SUMAC	30	80cm SPR.	#7 CONTAINER - 1.2m OC
RRG	ROSA RUGOSA 'PINK GROETENDORST'	PINK GROETENDORST ROSE	32	80cm HT.	#7 CONTAINER - 1m OC
RPP	ROSA 'PURPLE PAVEMENT'	PURPLE PAVEMENT ROSE	15	50cm HT.	#5 CONTAINER - 1m OC
SSS	SOBARIA SORBIFOLIA 'SEM'	SEM FALSE SPIREA	140	50cm HT.	#5 CONTAINER - 80cm OC
SBB	SPIRAEA BUMALDA 'GOLDFLAME'	GOLDFLAME SPIREA	100	50cm HT.	#5 CONTAINER - 80cm OC
SBD	SPIRAEA BUMALDA 'DART'S RED'	DART'S RED SPIREA	45	50cm HT.	#5 CONTAINER - 80cm OC
SJS	SPIRAEA JAPONICA 'SHROBANA'	SHROBANA SPIREA	80	50cm HT.	#5 CONTAINER - 80cm OC
SIC	STEPHANANDRA INDICA 'CRISPA'	CUTLEAF STEPHANANDRA	5	80cm HT.	#7 CONTAINER - 1.2m OC
SMP	SYRINGA MEYERI 'PALIBIN'	DWARF KOREAN LILAC	99	80cm HT.	#7 CONTAINER - 1.2m OC
WFR	WEIGELA FLORIDA 'RED PRINCE'	RED PRINCE WEIGELA	135	80cm HT.	#7 CONTAINER - 1.2m OC
CONIFERUS SHRUBS					
JHB	JUNIPERUS HORIZONTALIS 'BLUE CHIP'	BLUE CHIP JUNIPER	20	80cm SPR.	#7 CONTAINER - 1m OC
JHP	JUNIPERUS HORIZONTALIS 'PLUMOSA COMPACTA'	COMPACT ANDORRA JUNIPER	90	80cm SPR.	#7 CONTAINER - 1m OC
JST	JUNIPERUS SABINA 'TAMARISCIFOLIA'	TAM JUNIPER	119	80cm SPR.	#7 CONTAINER - 1m OC
PERRENIALS					
HTS	HELIOPSIS 'TUSCAN FUN'	TUSCAN SUN FALSE SUNFLOWER	48	#2 CONTAINER	45cm OC
SSM	SALVIA X SYLVESTRIS 'MAY NIGHT'	MAY NIGHT SAGE	48	#2 CONTAINER	45cm OC
GRASSES					
CAK	CALAMAGROSTIS ACUTIFLORA 'KARL FOERSTER'	KARL FOERSTER FEATHER REED GRASS	32	#2 CONTAINER	1m OC
HSS	HELICTRICHON SEMPERVIRENS 'SAPPHIRE BLUE'	SAPPHIRE BLUE OAT GRASS	30	#2 CONTAINER	60cm OC
MSP	MISCANTHUS SINENSIS 'PURPURASCENS'	FLAME GRASS	29	#2 CONTAINER	1m OC

REVISED AS PER COMMENTS	2014-08-19
SUBMITTED FOR SPA	2014-04-08
FOR REVIEW	2014-03-10

- NO. ISSUE & REVISIONS DATE
- The General Contractor shall verify all conditions in the field and report any discrepancies to the Landscape Architect prior to construction.
  - Any areas outside the limit of work damaged by the General Contractor shall be restored by the General Contractor to the satisfaction of the contract administrator at no additional cost to the Owner.
  - All underground utilities to be located by the General Contractor prior to construction.
  - This drawing is a portion of a complete project and shall be read in conjunction with all other drawings, specifications and tender documents related to the project, regardless of origin.
  - All measurements in millimeters unless otherwise noted.



**FOTENN**  
PROJECT RIVERSIDE SOUTH SHOPPING CENTRE  
1420 EARL ARMSTRONG ROAD  
OTTAWA, ONTARIO

DRAWING LANDSCAPE PLAN III

SCALE: 1:250	DRAWING NO. L-03
DRAWN: LM	CHECKED: LM
DATE: 2014-02-07	REVISION NO. 00

