

LOTS 136 & 137
REGISTERED PLAN 4M-27
CITY OF OTTAWA

Prepared by Annis, O'Sullivan, Vollebakk Ltd.
 Field Work Completed October 2, 2013

Scale 1 : 150



Metric

DISTANCES SHOWN ON THIS PLAN ARE IN METRES AND
 CAN BE CONVERTED TO FEET BY DIVIDING BY 0.3048

Notes & Legend

Denotes	
	Survey Monument Planted
	Survey Monument Found
	Standard Iron Bar
	Short Standard Iron Bar
	Iron Bar
	(857) Plan dated July 23, 2013
	Maintenance Hole (Sanitary)
	Overhead Wires
	Utility Pole
	Catch Basin
	Fire Hydrant
	Water Valve
	Top of Grate
	Gas Meter
	Deciduous Tree
	Coniferous Tree
	Bollard
	Chain Link Fence
	Board Fence
	Metal Fence
	Centreline
	Diameter
	Location of Elevations
	Top of Concrete Curb Elevation
	Property Line

Bearings are MTM NAD-83 Zone 9 Grid.

SITE AREA = 742.4 m²

BOUNDARY INFORMATION COMPILED FROM PLANS
 Sewer Diameter and Inverts derived, from City of Ottawa Service Sheet
 G100-A6.

ELEVATION NOTES

- Elevations shown are referred to geodetic datum.
- It is the responsibility of the user of this information to verify that the job benchmark has not been altered or disturbed and that its relative elevation and description agrees with the information shown on this drawing.

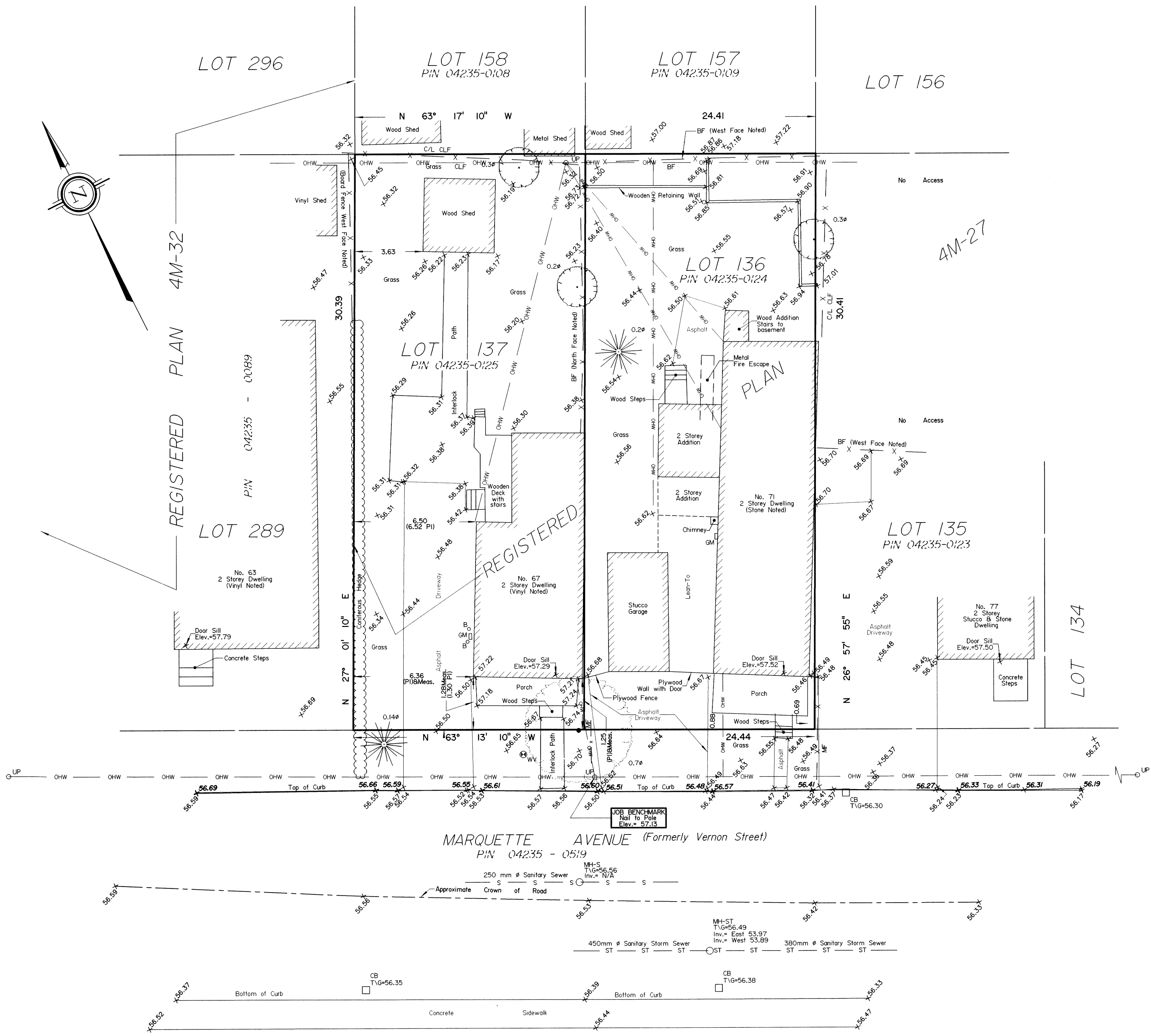
UTILITY NOTES

- This drawing cannot be accepted as acknowledging all of the utilities and it will be the responsibility of the user to contact the respective utility authorities for confirmation.
- Only visible surface utilities were located.
- A field location of underground plant by the pertinent utility authority is mandatory before any work involving breaking ground, probing, excavating etc.

© Annis, O'Sullivan, Vollebakk Ltd., 2013. "THIS PLAN IS PROTECTED BY COPYRIGHT"

ANNIS, O'SULLIVAN, VOLLEBEKK LTD.
 14 Concourse Gate, Suite 500
 Nepean, Ont. K2E 7S6
 Phone: (613) 727-0850 / Fax: (613) 727-1079
 Email: Nepean@aosvlltd.com

Ontario Land Surveyors Job No. 14189-13 Capital View Lts136&137 4M-27 T DI AE



I:\2013\14189-13\Drawings\14189-13_Capital View Lts136&137 4M-27 T DI.dwg
 11/20/2013 10:48:51 AM