

MATERIAL TAG LEGEND

PC-1	PRECAST CONCRETE
ALP-1	ALUMINUM PANEL - TYPE 1
ALP-2	ALUMINUM PANEL - TYPE 2
ALP-3	ALUMINUM PANEL - TYPE 3
LV	ALUMINUM LOUVER (PREFINISHED)
BM-1	BRICK MASONRY VENEER - TYPE 1
GL-1	GLASS - REFER TO SPECS
GL-2	FRONTED GLASS - REFER TO SPECS
FF-0H	PREFINISHED OVERHEAD DOOR
SP-1	SPANNING GLASS - REFER TO SPEC FINISH
SP-2	PERFORATED STEEL GUARD
CM5	CORRUGATED METAL SIDING
CB	CONCRETE BLOCK
WB	EXTERIOR WALL SCIENCE



Andrew McCreight
ANDREW MCCREIGHT
 MANAGER, DEVELOPMENT REVIEW CENTRAL
 PLANNING, REAL ESTATE & ECONOMIC DEVELOPMENT
 DEPARTMENT, CITY OF OTTAWA

APPROVED
 By Andrew McCreight at 2:01 pm, Feb 20, 2024

D 231219 Issued for SPC
 A 230808 50% Design Development

IT IS THE RESPONSIBILITY OF THE APPROPRIATE CONTRACTOR TO CHECK AND VERIFY ALL DIMENSIONS ON SITE AND REPORT ALL ERRORS AND/OR OMISSIONS TO THE ARCHITECT.

ALL CONTRACTORS MUST COMPLY WITH ALL PERTINENT CODES AND BY-LAWS.

DO NOT SCALE DRAWINGS.

THIS DRAWING MAY NOT BE USED FOR CONSTRUCTION UNTIL SIGNED.

COPYRIGHT RESERVED.

Hobin Architecture Incorporated
 63 Pamela Street
 Ottawa, Ontario
 Canada K1S 3K7
 T: 613-238-7200
 F: 613-235-2055
 E: mail@hobinarc.com
 hobinarc.com

HOBIN
ARCHITECTURE

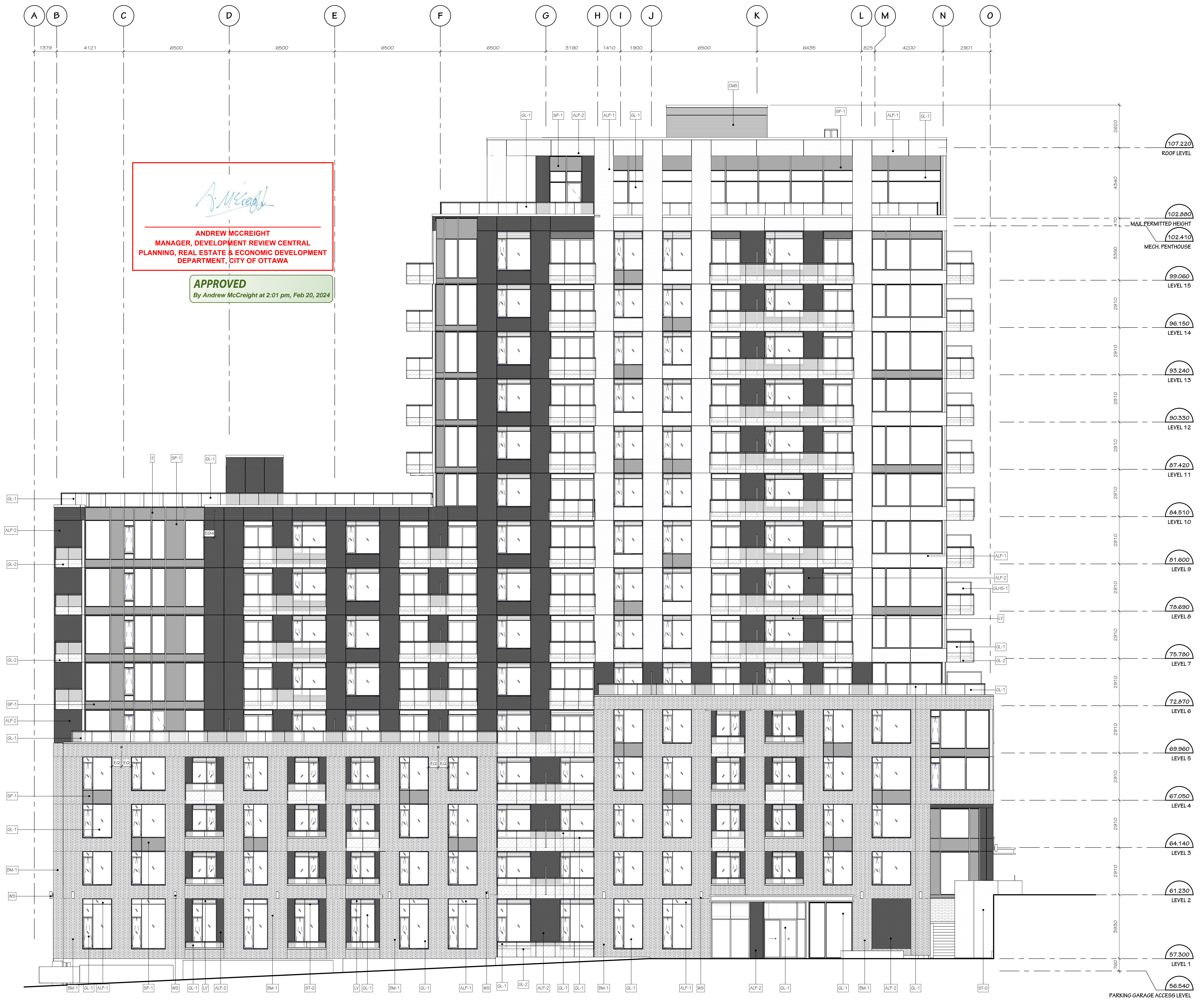
PROJECT
989 Somerset
 989 Somerset St. W., Ottawa, ON, K1R 6R2

DRAWING TITLE
SOUTH ELEVATION

DRAWN	DATE	SCALE
Author	XXXXXXXXXX	As Indicated
PROJECT		2:1=10
DRAWING NO.		A3.01
REVISION NO.		B

ONTARIO ASSOCIATION OF ARCHITECTS
 Andrew J. Hobin
 LICENCE 3049

18/76



Andrew McCreight
ANDREW MCCREIGHT
 MANAGER, DEVELOPMENT REVIEW CENTRAL
 PLANNING, REAL ESTATE & ECONOMIC DEVELOPMENT
 DEPARTMENT, CITY OF OTTAWA

APPROVED
 By Andrew McCreight at 2:01 pm, Feb 20, 2024

MATERIAL TAG LEGEND

FC-1	FRESH CONCRETE
ALP-1	ALUMINUM PANEL - TYPE 1
ALP-2	ALUMINUM PANEL - TYPE 2
ALP-3	ALUMINUM PANEL - TYPE 3
LV	ALUMINUM LOUVER (REFINISHED)
BM-1	BRICK MASONRY VENEER - TYPE 1
GL-1	GLASS - REFER TO SPEC
GL-2	FRONTED GLASS - REFER TO SPEC
FF-0H	REFINISHED OVERHEAD DOOR
SF-1	SF PANEL GLASS - REFER TO SPEC FINISH
SF-G	PERFORATED STEEL GUARD
CM5	CONCRETE METAL SIDING
CB	CONCRETE BLOCK
WB	EXTERIOR WALL SCIENCE

D 231219 Issued for SPC
 A 230808 50% Design Development

IT IS THE RESPONSIBILITY OF THE APPROPRIATE CONTRACTOR TO CHECK AND VERIFY ALL DIMENSIONS ON SITE AND REPORT ALL ERRORS AND/OR OMISSIONS TO THE ARCHITECT.

ALL CONTRACTORS MUST COMPLY WITH ALL PERTINENT CODES AND BY-LAWS.

DO NOT SCALE DRAWINGS.

THIS DRAWING MAY NOT BE USED FOR CONSTRUCTION UNTIL SIGNED.

COPYRIGHT RESERVED.

Hobin Architecture Incorporated
 63 Pamela Street
 Ottawa, Ontario
 Canada K1S 3K7
 T: 613-238-7200
 F: 613-235-2055
 E: mail@hobinarc.com
 hobinarc.com

PROJECT
989 Somerset

989 Somerset St. W., Ottawa, ON, K1R 6R2

DRAWING TITLE
WEST ELEVATION

DRAWN	DATE	SCALE
Author	XXXXXXXXXX	As Indicated

PROJECT
 2110

DRAWING NO.
A3.02

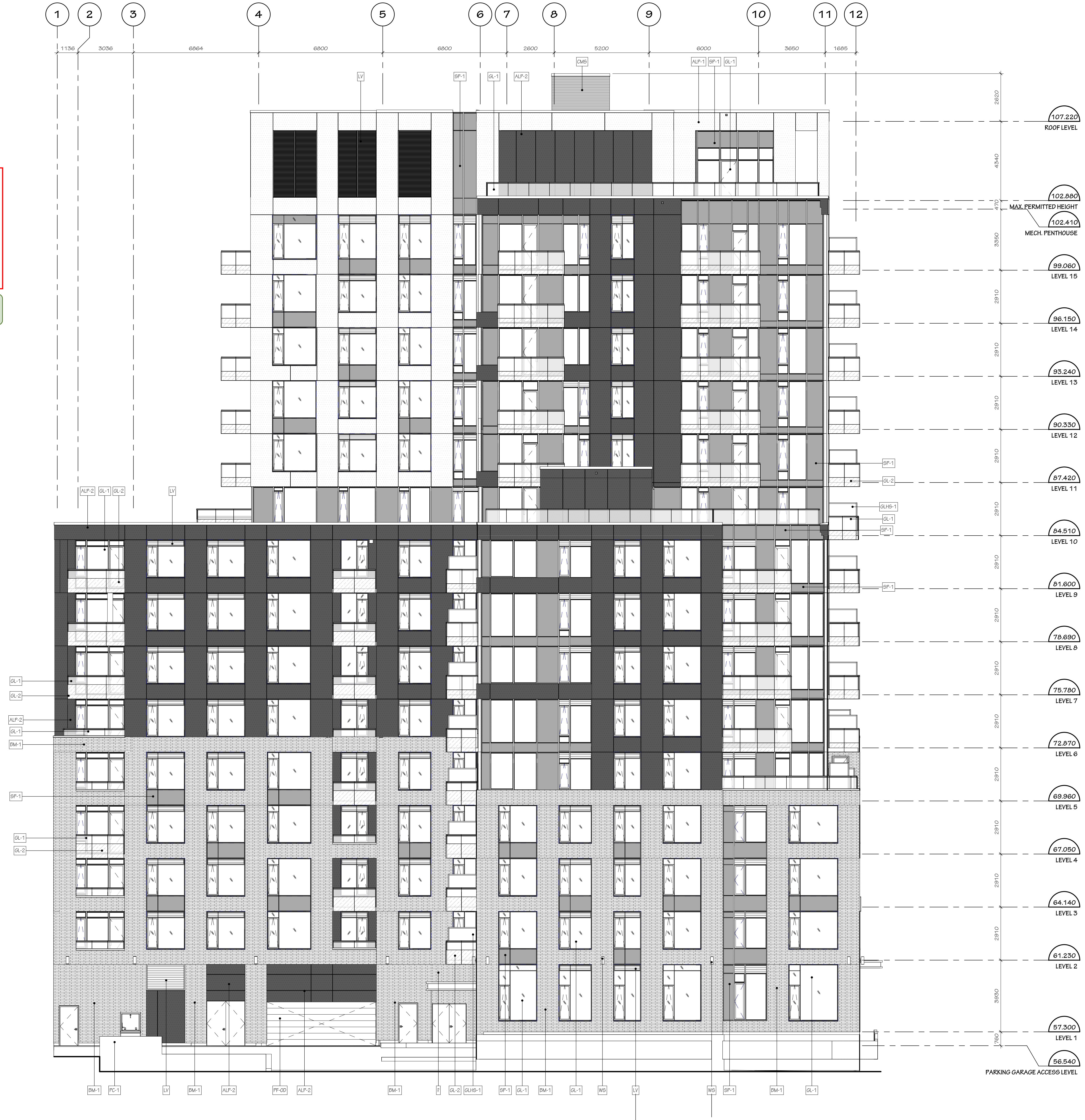
REVISION NO. 0
 18/76

MATERIAL TAG LEGEND

PC-1	PRECAST CONCRETE
ALP-1	ALUMINUM PANEL - TYPE 1
ALP-2	ALUMINUM PANEL - TYPE 2
ALP-3	ALUMINUM PANEL - TYPE 3
LV	ALUMINUM LOUVER (PREFINISHED)
BM-1	BRICK MASONRY VENEER - TYPE 1
GL-1	GLASS - REFER TO SPEC
GL-2	FRONTED GLASS - REFER TO SPEC
FF-01	PREFINISHED OVERHEAD DOOR
SP-1	SPANNING GLASS - REFER TO SPEC FINISH
SP-2	PERFORATED STEEL GUARD
CMS	CORUGATED METAL SIDING
CB	CONCRETE BLOCK
WB	EXTERIOR WALL SCIENCE

Andrew McCreight
ANDREW MCCREIGHT
MANAGER, DEVELOPMENT REVIEW CENTRAL
PLANNING, REAL ESTATE & ECONOMIC DEVELOPMENT
DEPARTMENT, CITY OF OTTAWA

APPROVED
By Andrew McCreight at 2:01 pm, Feb 20, 2024



D 231219 Issued for SPC
A 230808 50% Design Development

IT IS THE RESPONSIBILITY OF THE APPROPRIATE CONTRACTOR TO CHECK AND VERIFY ALL DIMENSIONS ON SITE AND REPORT ALL ERRORS AND/OR OMISSIONS TO THE ARCHITECT.

ALL CONTRACTORS MUST COMPLY WITH ALL PERTINENT CODES AND BY-LAWS.

DO NOT SCALE DRAWINGS.

THIS DRAWING MAY NOT BE USED FOR CONSTRUCTION UNTIL SIGNED.

COPYRIGHT RESERVED.

Hobin Architecture Incorporated
63 Pamela Street
Ottawa, Ontario
Canada K1S 3K7
T: 613-238-7200
F: 613-235-2055
E: mail@hobinarc.com
hobinarc.com

HOBIN
ARCHITECTURE

PROJECT
989 Somerset

989 Somerset St. W., Ottawa, ON, K1R 6R2

DRAWING TITLE
NORTH ELEVATION

DRAWN	DATE	SCALE
Author	XX/XX/XXXX	As Indicated

PROJECT
2110

DRAWING NO.
A3.03

REVISION NO. B
18/76

MATERIAL TAG LEGEND

PC-1	PRECAST CONCRETE
ALP-1	ALUMINUM PANEL - TYPE 1
ALP-2	ALUMINUM PANEL - TYPE 2
ALP-3	ALUMINUM PANEL - TYPE 3
LV	ALUMINUM LAMER (REFRINISHED)
BM-1	BRICK MASONRY VENEER - TYPE 1
GL-1	GLASS - REFER TO SPEC
GL-2	FRONTED GLASS - REFER TO SPEC
PF-01	REFRINISHED OVERHEAD DOOR
SP-1	SPANDREL GLASS - REFER TO SPEC FINISH
ST-G	PERFORATED STEEL GUARD
CM5	CORUGATED METAL SIDING
CB	CONCRETE BLOCK
WB	EXTERIOR WALL SCIENCE

D 231219 Issued for SPC
A 230808 50% Design Development

IT IS THE RESPONSIBILITY OF THE APPROPRIATE CONTRACTOR TO CHECK AND VERIFY ALL DIMENSIONS ON SITE AND REPORT ALL ERRORS AND/OR OMISSIONS TO THE ARCHITECT.

ALL CONTRACTORS MUST COMPLY WITH ALL PERTINENT CODES AND BY-LAWS.

DO NOT SCALE DRAWINGS.

THIS DRAWING MAY NOT BE USED FOR CONSTRUCTION UNTIL SIGNED.

COPYRIGHT RESERVED.

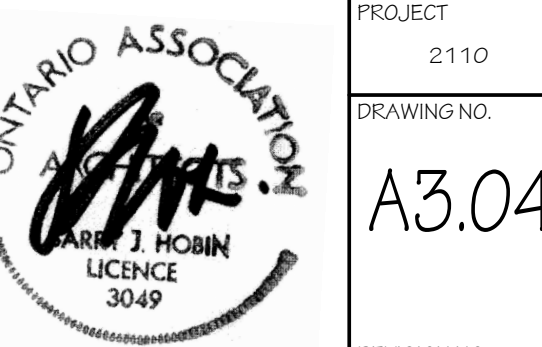
Hobin Architecture Incorporated
63 Pamela Street
Ottawa, Ontario
Canada K1S 3K7
T: 613-238-7200
F: 613-235-2055
E: mail@hobinarc.com
hobinarc.com

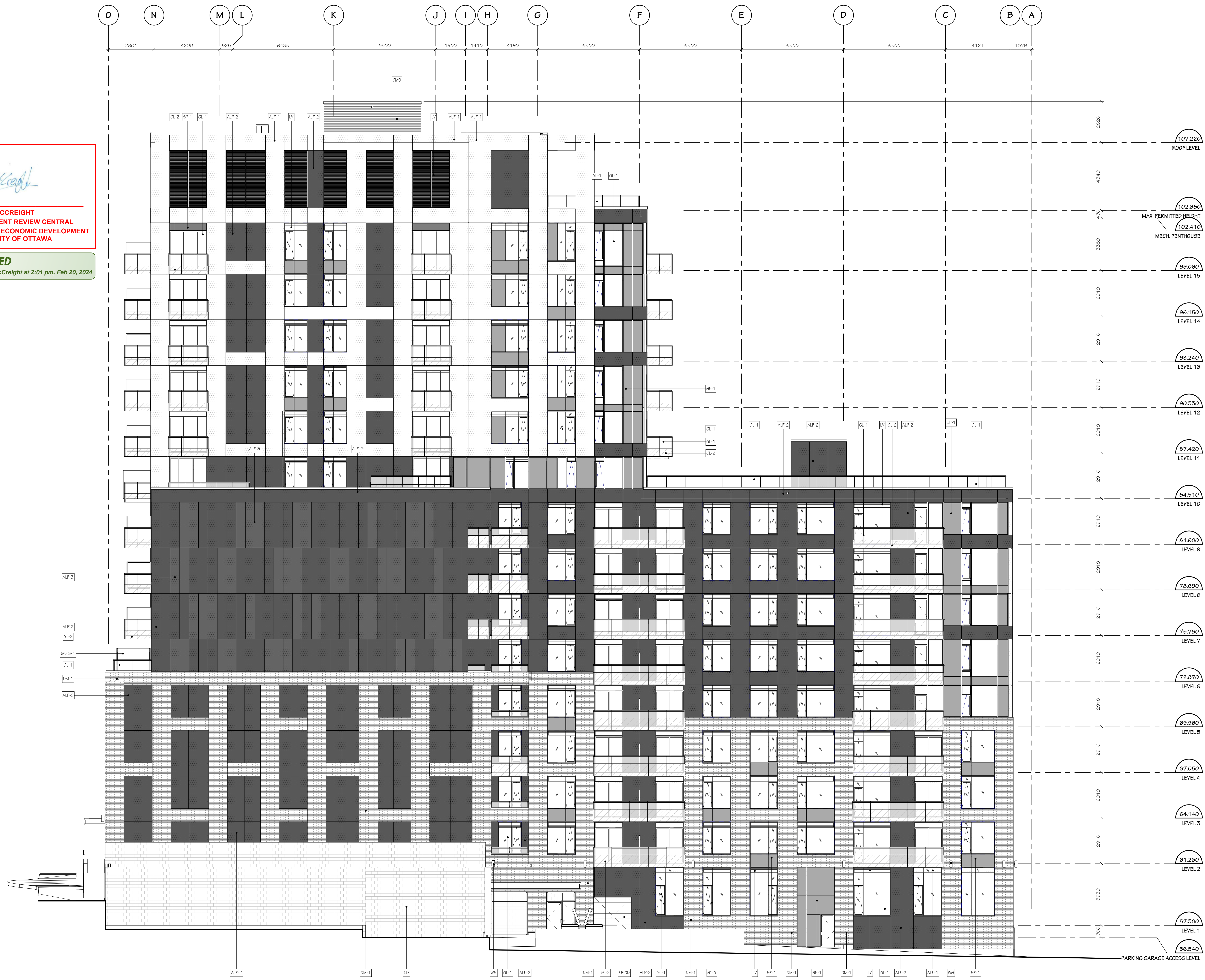


HOBIN
ARCHITECTURE

PROJECT
989 Somerset
989 Somerset St. W., Ottawa, ON, K1R 6R2

DRAWING TITLE
EAST ELEVATION

DRAWN Author	DATE XXXXXXXXXX	SCALE As Indicated
PROJECT 2110		DRAWING NO. A3.04
 ONTARIO ASSOCIATION OF ARCHITECTS ARCHITECT J. HOBIN LICENCE 3049		REVISION NO. 0



Andrew McCreight

ANDREW MCCREIGHT
MANAGER, DEVELOPMENT REVIEW CENTRAL
PLANNING, REAL ESTATE & ECONOMIC DEVELOPMENT
DEPARTMENT, CITY OF OTTAWA

APPROVED
By Andrew McCreight at 2:01 pm, Feb 20, 2024