

PROPOSED PLANT LIST

KEY	QTY.	BOTANICAL NAME	COMMON NAME	SIZE	CONDITION	REMARKS
ORNAMENTAL GRASSES						
FO	56	Festuca ovina 'Elijah Blue'	Elijah's Blue Fescue	250mm Pot.	Potted	Space 500mm O.C.
SG	24	Panicum virgatum 'Prairie Fire'	Prairie Fire Switchgrass	250mm Pot.	Potted	Space 1000mm O.C.

EXISTING TREE LIST

KEY	QTY.	BOTANICAL NAME	COMMON NAME	SIZE	CONDITION	REMARKS
TREES						
AN	12	Acer negundo	Manitoba Maple	200-400mmø	Good	To Remain
GT	2	Gleditsia triacanthos	Honey Locust	100-300mmø	Good	See Plan
JC	1	Juniperus chinensis 'Mountbatten'	Mountbatten Juniper	100mmø	Good	To Be Removed
PN	1	Pinus nigra	Austrian Pine	450mmø	Good	To Remain
PS	1	Pinus sylvestris	Scots Pine	300mmø	Good	To Remain

GENERAL NOTES:

- It is the responsibility of the appropriate contractor or official to report any errors, omissions or discrepancies on this plan with actual site conditions to the Landscape Architect before proceeding with construction.
- The contractor is to notify all utility companies and authorities prior to any excavation and ascertain locations of underground services.
- The contractor is to reinstate all areas and items damaged as a result of construction activity.
- The contractor is to comply with all pertinent codes and by-laws.
- The contractor is to maintain a positive surface run-off throughout the entire construction period.
- The Landscape Architect is not responsible for subsurface conditions.
- The contractor is to identify all existing trees to remain on site with the Landscape Architect prior to construction.
- The contractor is to stake the proposed location of all plant material in conjunction with the Landscape Architect prior to excavation.
- Minimum distances for selected deciduous trees are as follows:
 - Building Foundations 7.5m
 - Sidewalks 1.5m
 - Public Streets 2.5m
 - Underground Infrastructure 2.0m
- All trees within 1m of underground utility trenches are to be excavated by hand.
- Remove all protective wrapping from tree trunks after installation.
- Staking of trees shall only be performed if necessary.
- Ensure that mulch is pulled back a min. distance of 75mm from base of tree trunk.
- Deciduous trees to be planted on private property 450mm inside of property line min.

CONSULTANTS

ARCHITECTS: **P & R**
 PYE & RICHARDS ARCHITECTS INC.
 824 MEARNS STREET OTTAWA ONTARIO K1Z 6E8
 TEL: 613 724-7700 FAX: 613 724-1289
 EMAIL: info@pyerichards.com
 WEBSITE: www.pyerichards.com

CIVIL ENGINEERS: CAPITAL ENGINEERING GROUP LTD.
 MUNICIPAL / LAND DEVELOPMENT
 110 DOSETTHER WAY, OTTAWA, ONTARIO K1V 4E5
 TEL: (613) 738-0778 F: (613) 738-7502

LEGEND

- EXISTING TREES TO REMAIN
- EXISTING TREE TO BE REMOVED (REMOVE STUMP TO A DEPTH OF 600mm BELOW FINISH GRADE)
- EXISTING GRASS TO REMAIN
- TREE PROTECTION FENCE
- PROPOSED PAVERS
- PROPOSED SOD
- PROPOSED ORNAMENTAL GRASS

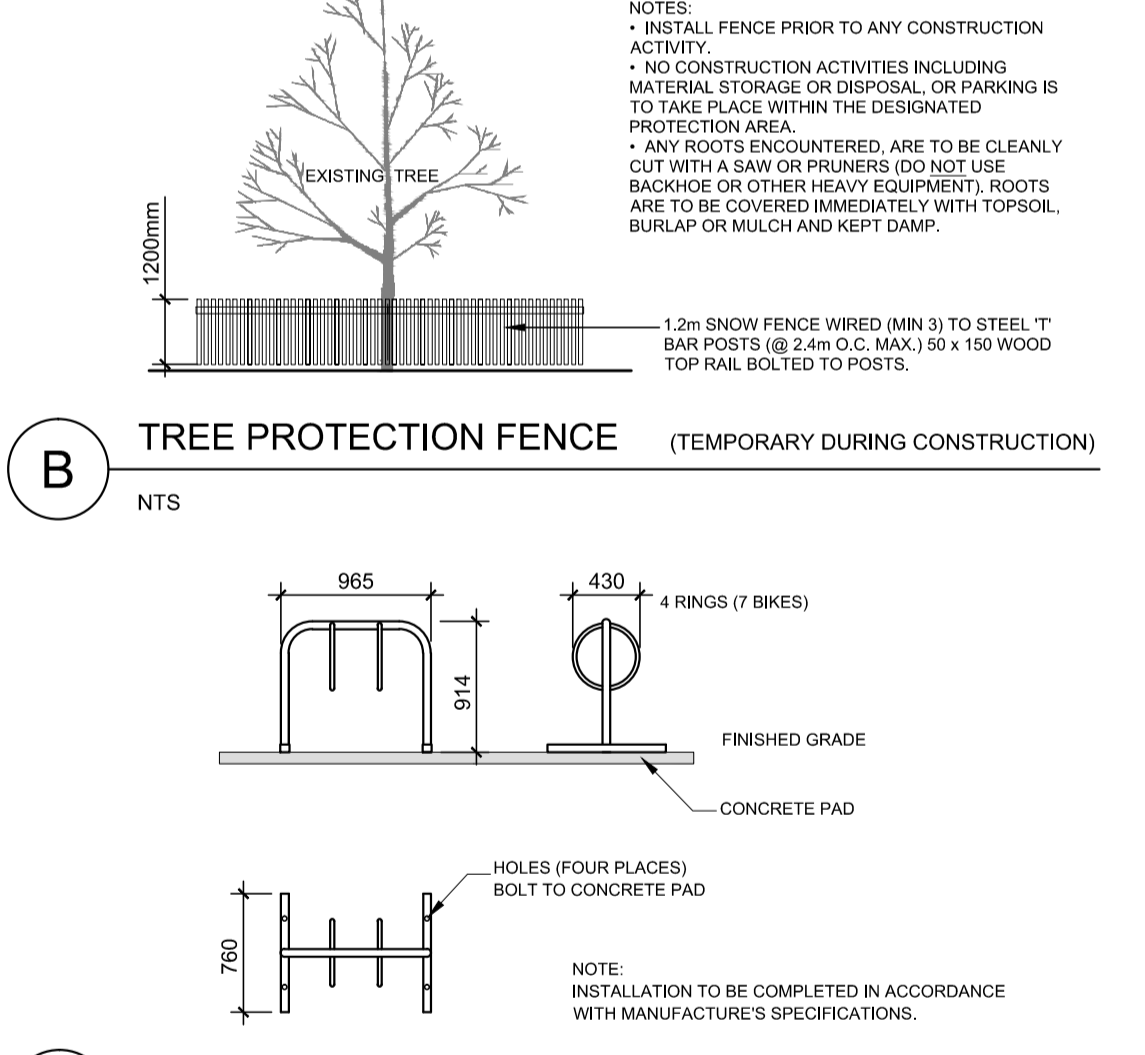
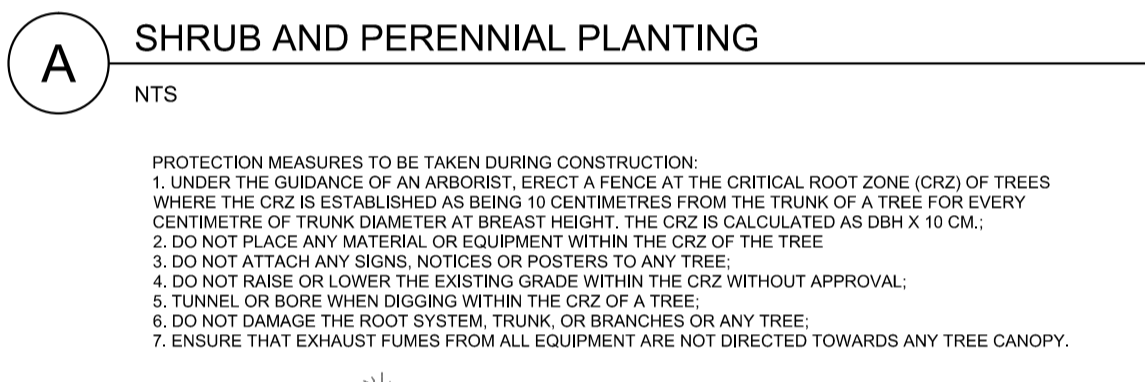
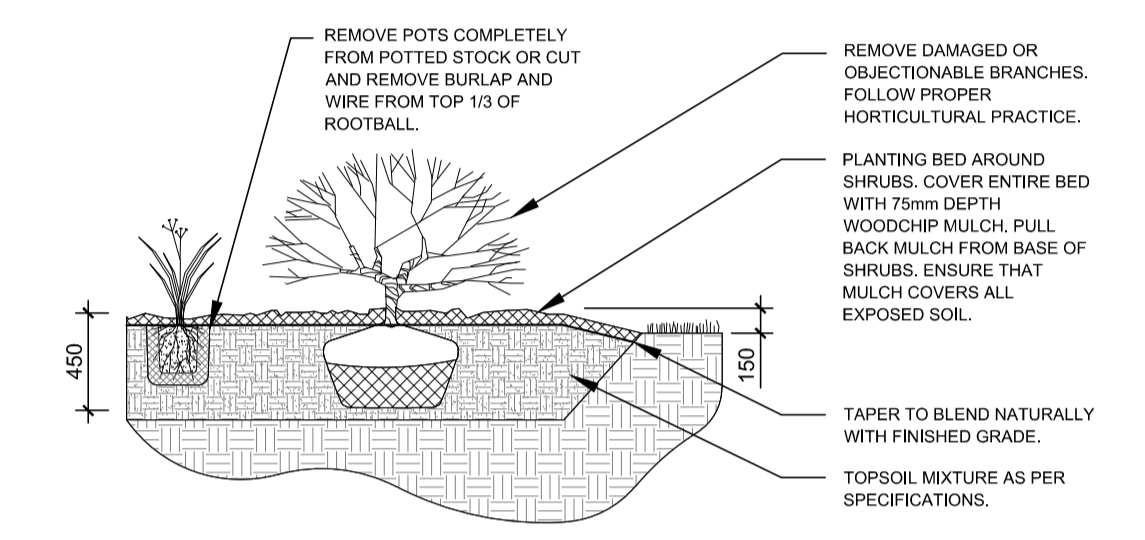
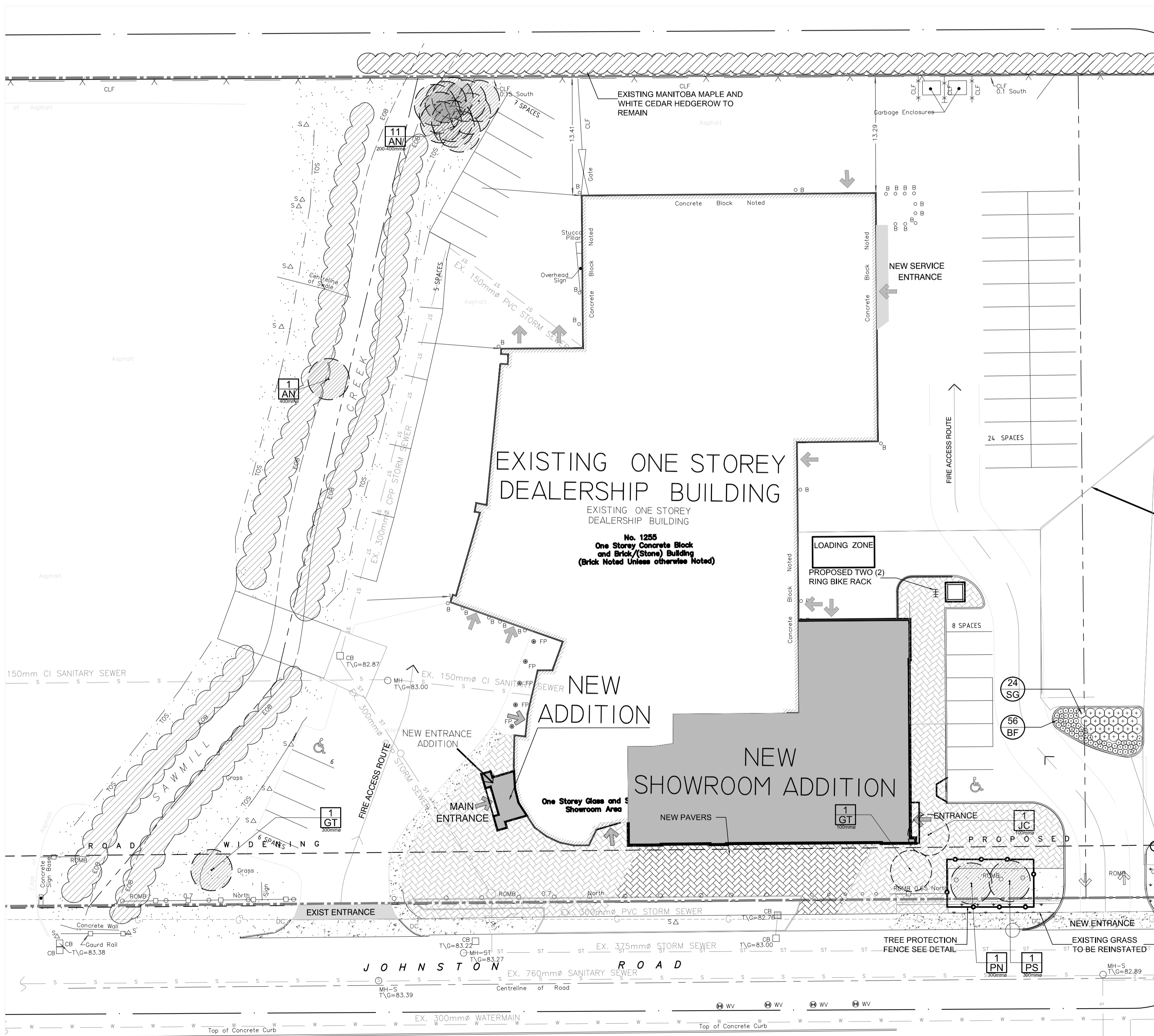
1	ISSUED FOR SITE PLAN APPLICATION	08/11/2014	ML	JL
No.	Issue	DD/MM/YYYY	DR	CK

JAMES B. LENOX & ASSOCIATES INC.
LANDSCAPE ARCHITECTS
 SUITE 300 WASHINGTON PARK PLAZA, 1419 CARLING AVE. OTTAWA, ONTARIO K1Z 7J6
 Tel. (613) 722-5168 Fax. (613) 722-5168

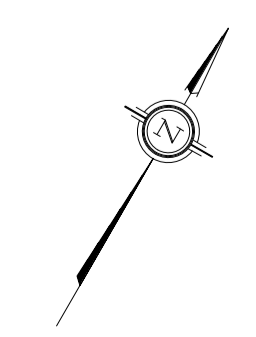
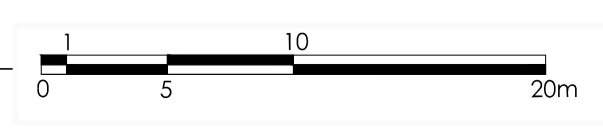
PROJECT
 Southbank Dodge Chrysler
 1255 Johnston Road, Ottawa On

DRAWING
 LANDSCAPE PLAN &
 TREE CONSERVATION REPORT

	SCALE 1:300
	START DATE APRIL 2014
	PROJECT NO. 14-PR-1433
	DRAWING NO. L.1



SEE SHEET L2



L.1

PLOT SIZE A.1