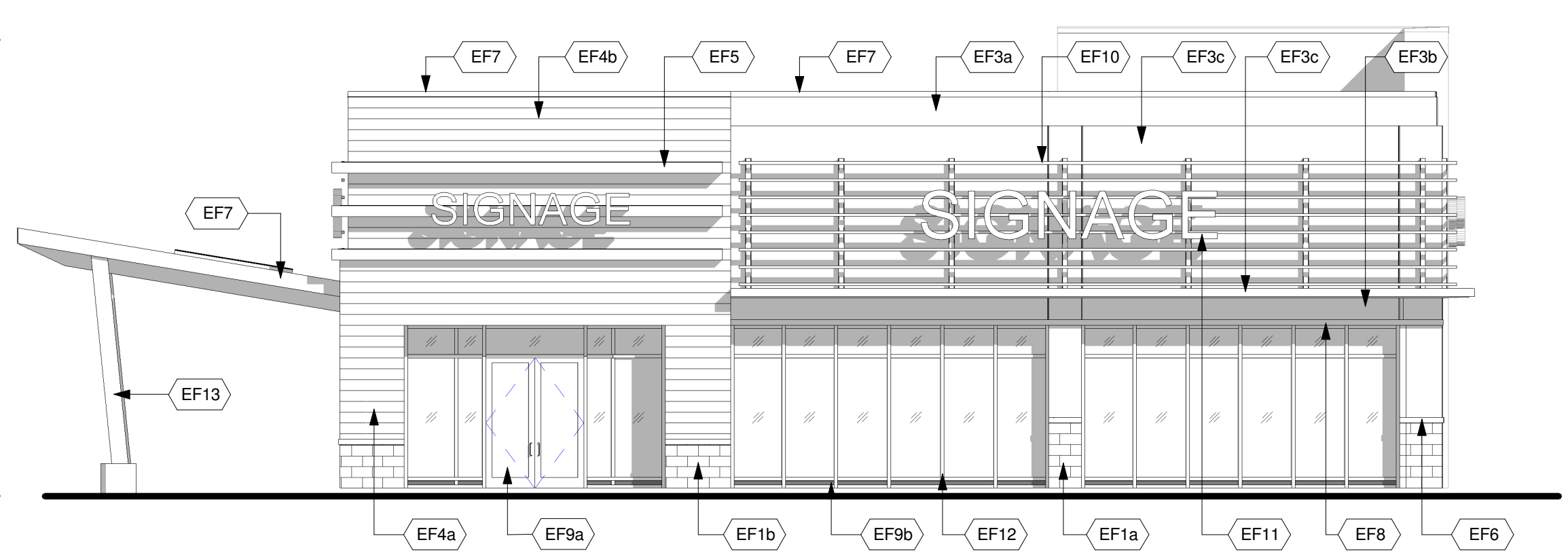


T/O HIGH PARAPET
28' - 0"

T/O LOW PARAPET
24' - 0"

T/O STEEL
18' - 6"

FFE
0"



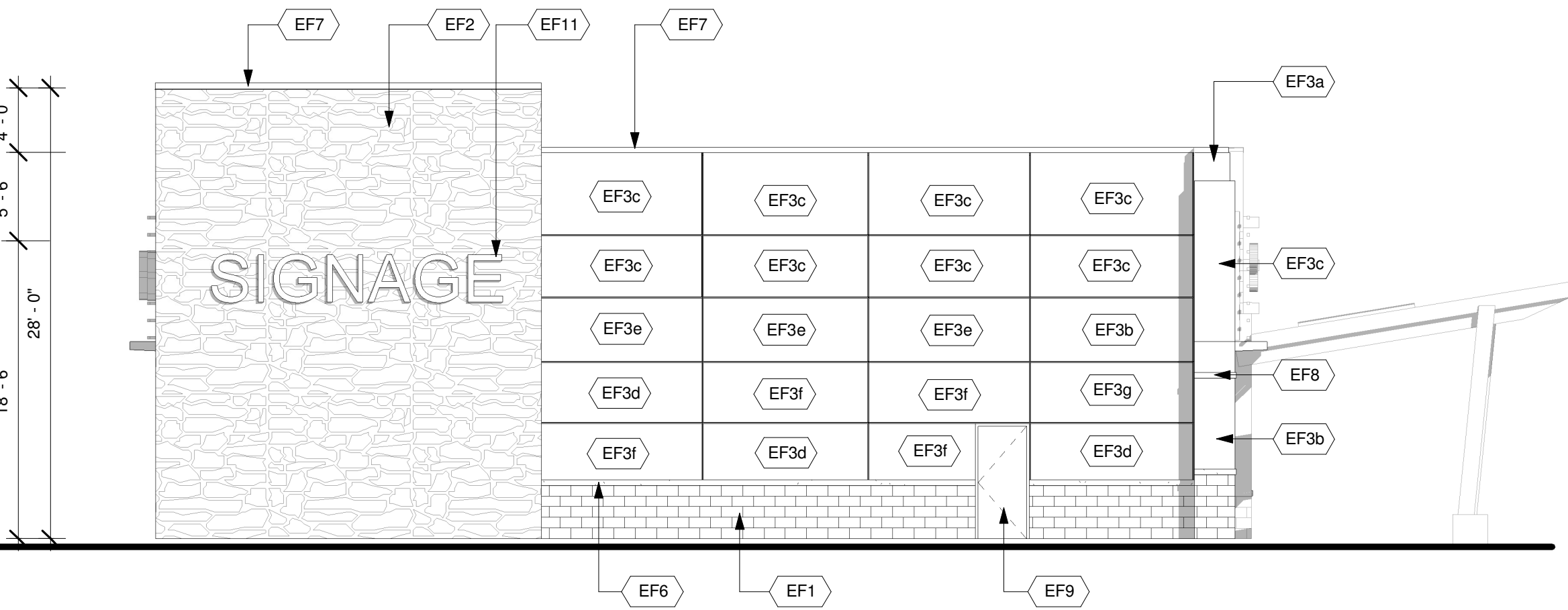
1 WEST ELEVATION
1/8" = 1'-0"

T/O HIGH PARAPET
28' - 0"

T/O LOW PARAPET
24' - 0"

T/O STEEL
18' - 6"

FFE
0"



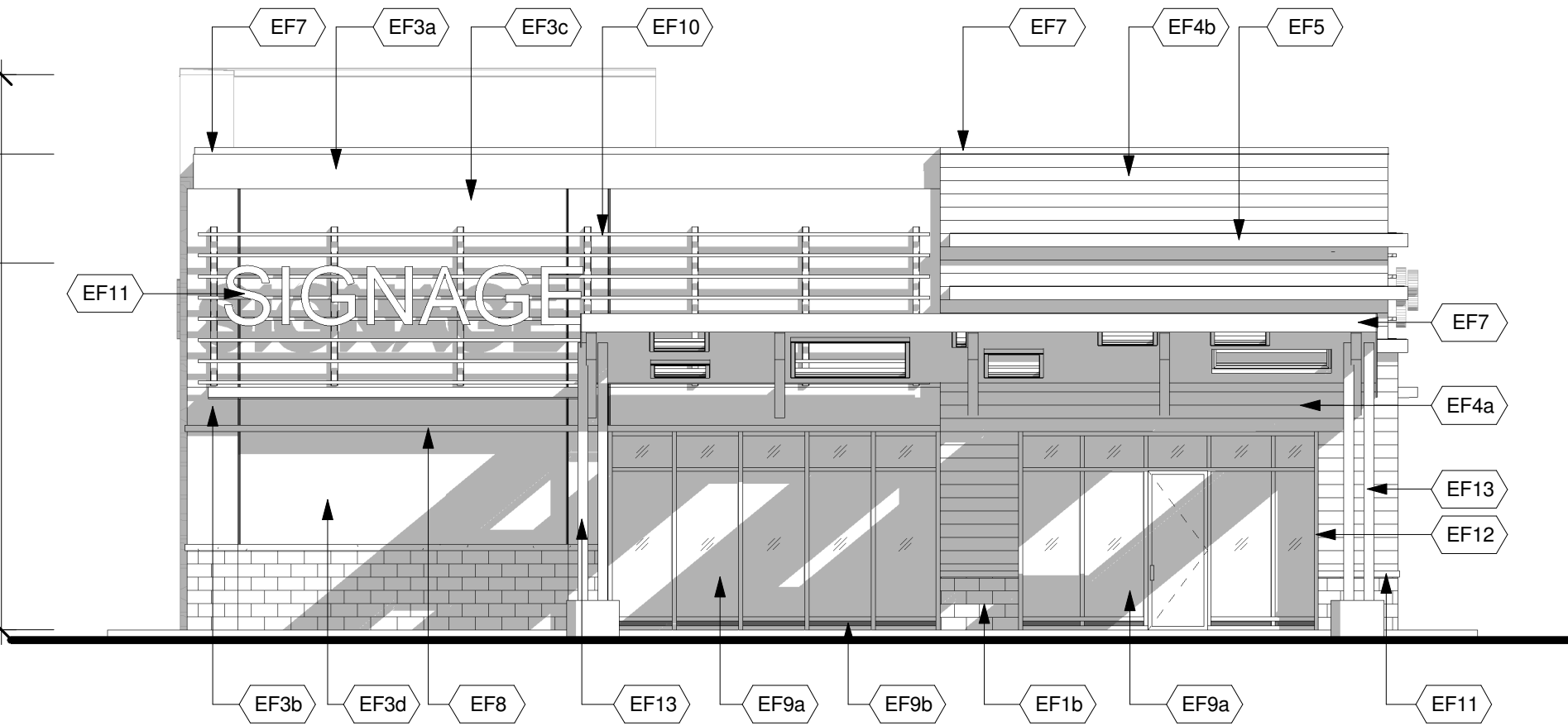
2 EAST ELEVATION
1/8" = 1'-0"

T/O HIGH PARAPET
28' - 0"

T/O LOW PARAPET
24' - 0"

T/O STEEL
18' - 6"

FFE
0"



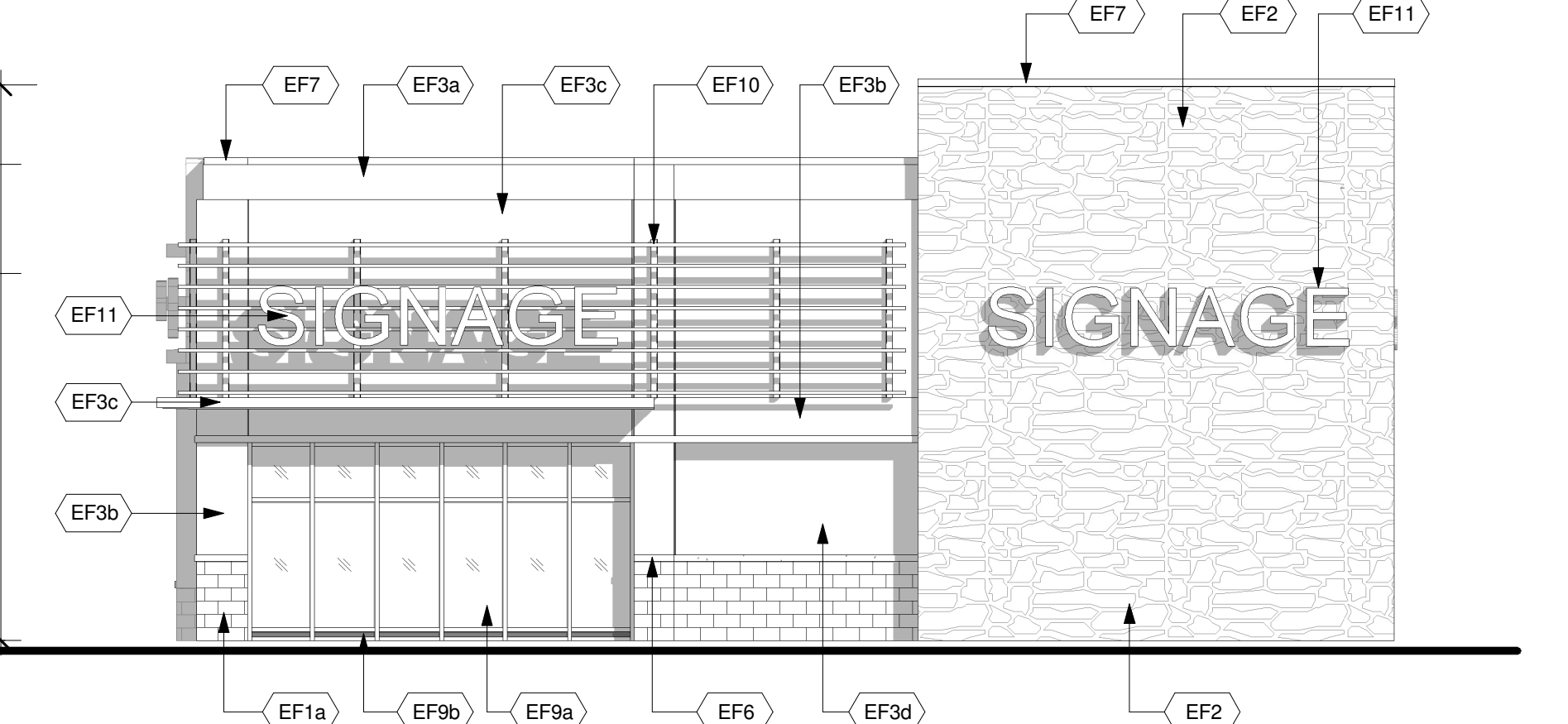
3 NORTH ELEVATION
1/8" = 1'-0"

T/O HIGH PARAPET
28' - 0"

T/O LOW PARAPET
24' - 0"

T/O STEEL
18' - 6"

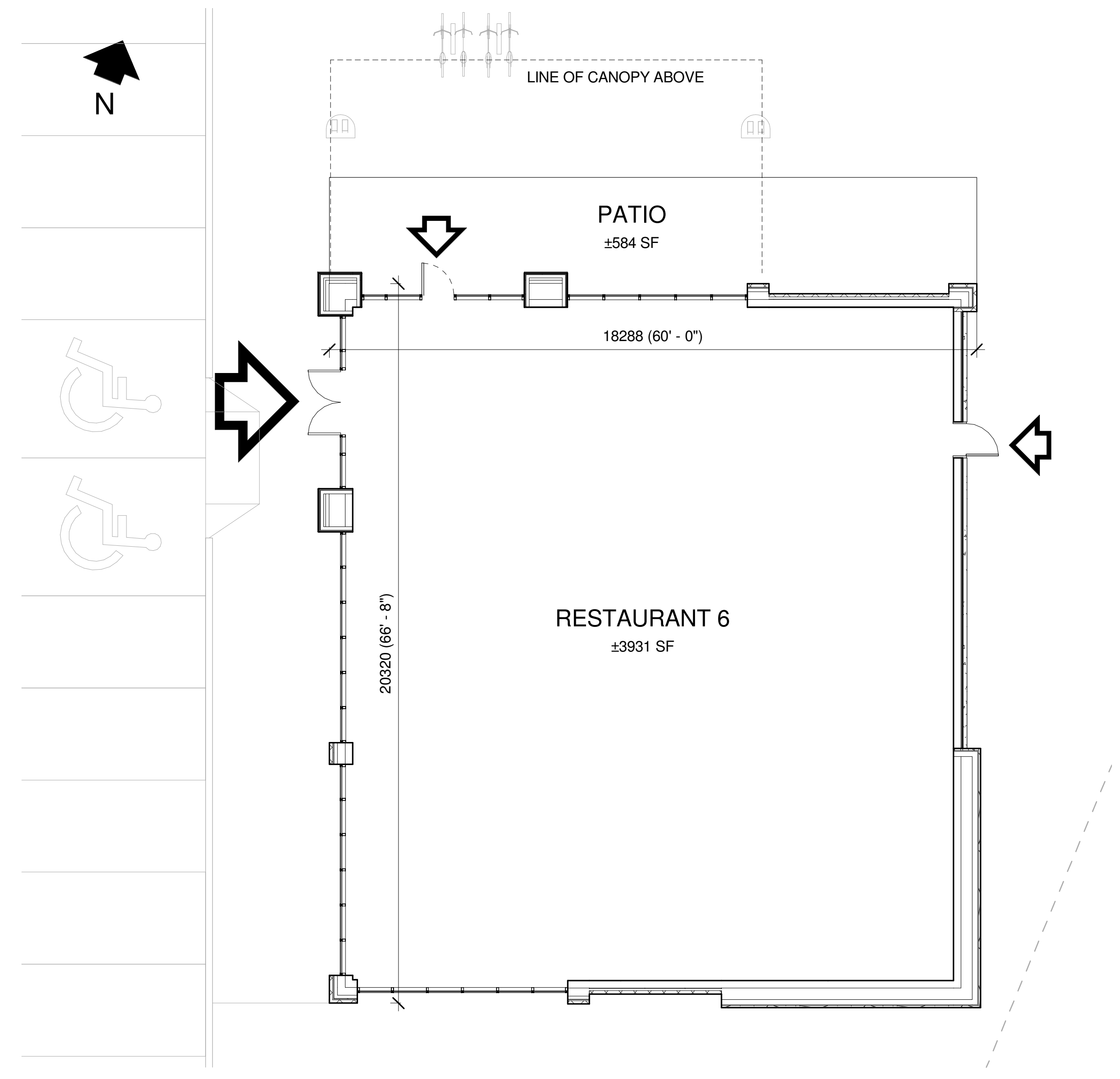
FFE
0"



4 SOUTH ELEVATION
1/8" = 1'-0"

EXTERIOR FINISH SCHEDULE

EF1a	ARCHITECTURAL BLOCK Architectural Concrete Block 4"x16"x24" Manufacturer: Shouidice Architectural Black Tie Series Finish: Tan Stone Colour: Colby	EF4a	FIBER CEMENT SIDING HORIZONTAL FIBER CEMENT SIDING Manufacturer: Certainfeild or approved equal Weatherboard cedar lap siding 8" wide Colour: Slate 525	EF10	METAL SLATS 2" x 2" x 1/8" HSS GALVANIZED LUBES HORIZONTAL AND HHS 6 x 3 VERTICAL SUPPORTS, DESIGNED TO CARRY SIGNAGE AND STAMPED BY PENG
EF1b	ARCHITECTURAL BLOCK Architectural Concrete Block 4"x16"x24" Manufacturer: Shouidice Architectural Black Tie Series Finish: Tan Stone Colour: Executive Grey	EF4b	FIBER CEMENT SIDING HORIZONTAL FIBER CEMENT SIDING Manufacturer: Certainfeild or approved equal Weatherboard cedar lap siding 8" wide Colour: Cedar 523	EF11	SIGNAGE (BY TENANT) At EIFS construction add 16 Ga sheet metal sheet between sheathing and stud at SIGNAGE locations.
EF2	CULTURED STONE Cultured Stone Manufacturer: Canadian Stone Industries Del Mare LedgeStone Series Colour: Barossa	EF5	COMPOSITE ALUMINUM PANEL Manufacturer: Mitsubishi Plastics Composite Plastics Inc. or approved equal ALPOLIC "Bone White" AGT-30 Dry Joint System	EF12	H.M. DOORS & FRAMES Prefinished hollow metal doors and frames Painted to match adjacent material
EF3a	EIFS (EXTERIOR INSULATED FINISH SYSTEM) ACRYLIC STUCCO FINISH Finish: Sanpebble BM 1893 SEMINOLE BROWN	EF6	PRECAST CONCRETE SILL Architectural concrete 3 1/2H x 5 9/16" W x 24"L Manufacturer: Shouidice Super sill 424 Finish: Tapestry Colour: To match EF1-BL1,2&3	EF13	WOOD FINISH
EF3b	EIFS (EXTERIOR INSULATED FINISH SYSTEM) ACRYLIC STUCCO FINISH Finish: Sanpebble BM 2007-10 SMOLDERING RED	EF7	PREFINISHED METAL FLASHING/FASCIA 24 GA. PREFINISHED METAL FLASHING/FASCIA *Refer to schedules for colour and material specifications		
EF3c	EIFS (EXTERIOR INSULATED FINISH SYSTEM) ACRYLIC STUCCO FINISH Finish: Sanpebble BM 1116 - SEPIA TAN	EF8	DECORATIVE MOULDING EXPANDED POLYSTYRENE MOULDING TO MATCH PROFILES INDICATED ON DRAWINGS ACRYLIC STUCCO FINISH Finish: Sanpebble BM 2124-10-WROUGHT IRON		
EF3d	EIFS (EXTERIOR INSULATED FINISH SYSTEM) ACRYLIC STUCCO FINISH Finish: Sanpebble BMHC-155 NEWBURYPORT BLUE	EF9a	GLAZED DOORS & WINDOWS Clear anodized aluminum frames. Clear insulated vision glass/low-E glazing (tempered glass to be used at doors and sidelights/sidelites)		
EF3e	EIFS (EXTERIOR INSULATED FINISH SYSTEM) ACRYLIC STUCCO FINISH Finish: Sanpebble BM-2128 OXFORD GRAY	EF9b	SPANDREL ALUMINUM PANEL 2" Insulated clear anodized aluminum panel finished at both sides		
EF3f	EIFS (EXTERIOR INSULATED FINISH SYSTEM) ACRYLIC STUCCO FINISH Finish: Sanpebble BM OC-85 - MAYONNAISE				
EF3g	EIFS (EXTERIOR INSULATED FINISH SYSTEM) ACRYLIC STUCCO FINISH Finish: Sanpebble BM 2112-30 STONE BROWN				



5 SITE PLAN
1/8" = 1'-0"

This drawing, as an instrument of service, is provided by and is the property of Turner Fleischer Architects Inc. The contractor must verify and accept responsibility for all dimensions and conditions on site and must notify Turner Fleischer Architects Inc. of any variations from the as-constructed information. This drawing is not to be used for any other project without the written consent of Turner Fleischer Architects Inc. The contractor must conform to all applicable codes and requirements of authorities having jurisdiction. The contractor working from drawings not specifically marked for construction must assume full responsibility and bear costs for any corrections or damage resulting from his work.

2	2014-11-17	ISSUED FOR COORDINATION	JJ
1	2014-11-13	ISSUED FOR COORDINATION	JJ
Issue / Rev:	Date:	Issue / Revision:	By:

PROJECT ARCHITECT

TURNER FLEISCHER
TURNER FLEISCHER ARCHITECTS INC.
67 Leslie Road, Toronto, ON Canada M9B 2T8
Tel: (416) 494-2222, Toronto (416) 494-6727
turnerfleischer.com

LANDSCAPE CIVIL

IBI GROUP
Architects, Engineers, Planners 333 Preston Street
5th Floor, 230 Richmond Street West Tower 1, Suite 400
Toronto, ON Ottawa, Ontario
MSV 1V6, Canada Canada K1S 5N4
Tel: (416) 596-1930 Tel: (613) 225-1311
Fax: (416) 596-0644 Fax: (613) 225-9868

ELECTRICAL

h HAMMERSCHLAG + JOFFE INC.
69 Leslie Road Toronto,
Ontario Canada M9B 2T8
T: (416) 444-9263
F: (416) 444-1865
E: enj@hampj.com

PLANNER

FOTENN PLANNING & URBAN DESIGN
223 McLeod Street | Ottawa, ON | K2P 0Z8
T: 613.730.5709 ext.234 | F: 613.730.1136

DEVELOPER

RIO CAN
RioCan Real Estate Investment Trust
2300 Yonge Street
Suite 520
Toronto, Ontario
M4P 1E4
(416) 646-6330

Project:

TANGER OUTLETS KANATA
KANATA, ONTARIO

Drawing Name:

RESTAURANT 6 ELEVATIONS AND FLOOR PLAN

Proj no.: 12,258 Date: NOVEMBER 17, 2014
Drawn by: JJ Scale: As indicated
Checked by: RD Drawing No:

A2-1.7.1

F:\P09\12258\12258-15-REV17\ELEVATIONS\A2-1 (BIE B)\12258-A2-1.7 (RESTAURANT) 06.rvt



PRELIMINARY

F:\proj\12258\12258-15- REV\ELEVATIONS\A2-1 (SITE B)\12258-A2-1.7 (RESTAURANT 06).rvt



TANGER OUTLETS KANATA

KANATA, ONTARIO

RESTAURANT 6 PERSPECTIVE

TURNER FLEISCHER

www.turnerfleischer.com



NOVEMBER 17, 2014
12.258 A2-1.7.2