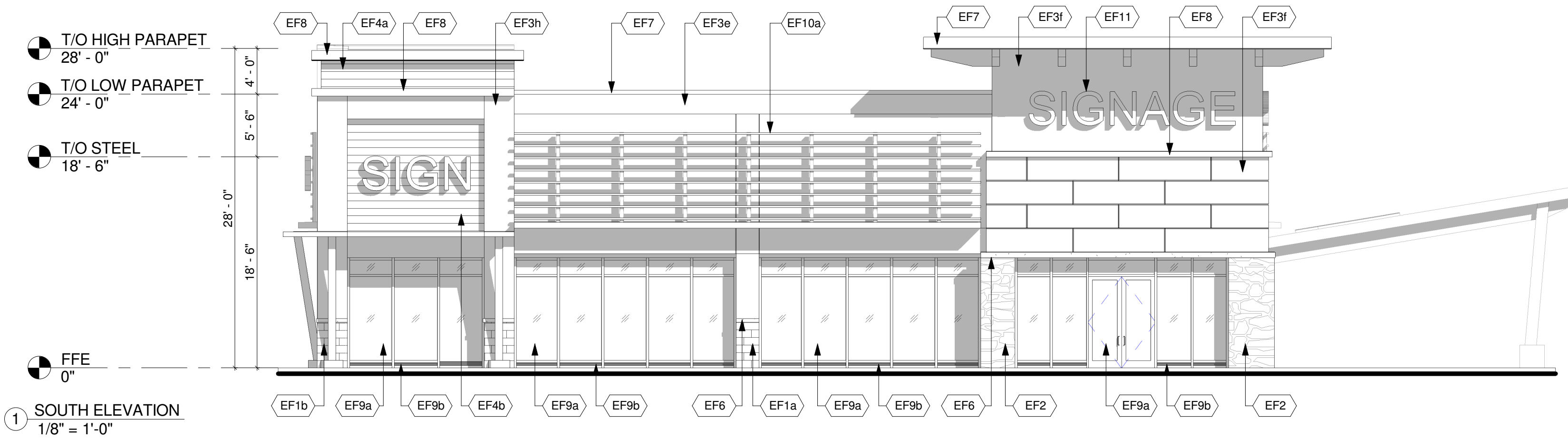
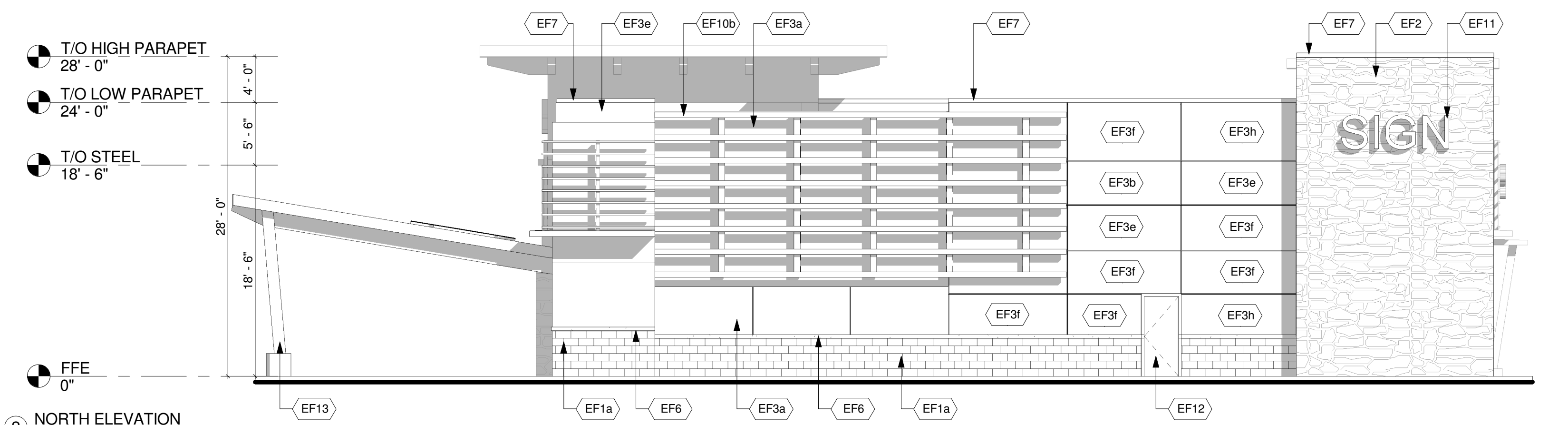


# EXTERIOR FINISH SCHEDULE

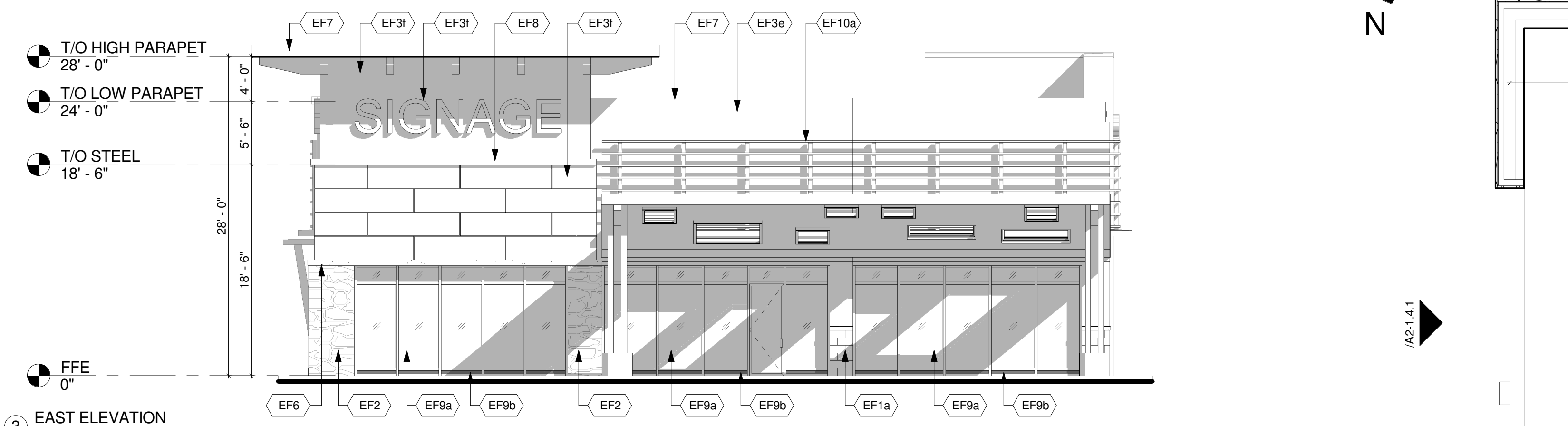
<p><b>EF1a</b> ARCHITECTURAL BLOCK Architectural Concrete Block 4"x16"x24" Manufacturer : Shouldice Architectural Block Tie Series Finish: Tex-Stone Colour: Cobly</p> <p><b>EF1b</b> ARCHITECTURAL BLOCK Architectural Concrete Block 4"x16"x24" Manufacturer : Shouldice Architectural Block Tie Series Finish: Tex-Stone Colour: Executive Grey</p> <p><b>EF2</b> CULTURED STONE Cultured Stone Manufacturer : Canadian Stone Industries Del Mare Ledgestone Series Colour: Barossa</p> <p><b>EF3a</b> EIFS (EXTERIOR INSULATED FINISH SYSTEM) ACRYLIC STUCCO FINISH Finish: Sanpebble BM 1883 SEMINOLE BROWN</p> <p><b>EF3b</b> EIFS (EXTERIOR INSULATED FINISH SYSTEM) ACRYLIC STUCCO FINISH Finish: Sanpebble BM 2007-10 SMOLDERING RED</p> <p><b>EF3c</b> EIFS (EXTERIOR INSULATED FINISH SYSTEM) ACRYLIC STUCCO FINISH Finish: Sanpebble BM 1116 - SEPIA TAN</p> <p><b>EF3d</b> EIFS (EXTERIOR INSULATED FINISH SYSTEM) ACRYLIC STUCCO FINISH Finish: Sanpebble BMHC-155 NEWBURYPORT BLUE</p> <p><b>EF3e</b> EIFS (EXTERIOR INSULATED FINISH SYSTEM) ACRYLIC STUCCO FINISH Finish: Sanpebble BM-2128 OXFORD GRAY</p> <p><b>EF3f</b> EIFS (EXTERIOR INSULATED FINISH SYSTEM) ACRYLIC STUCCO FINISH Finish: Sanpebble BM OC-85 - MAYONNAISE</p>	<p><b>EF3g</b> EIFS (EXTERIOR INSULATED FINISH SYSTEM) ACRYLIC STUCCO FINISH Finish: Sanpebble BM 1459 METRO GREY</p> <p><b>EF3h</b> EIFS (EXTERIOR INSULATED FINISH SYSTEM) ACRYLIC STUCCO FINISH Finish: Sanpebble BM 178 GOLDEN LAB</p> <p><b>EF4a</b> FIBER CEMENT SIDING HORIZONTAL FIBER CEMENT SIDING Manufacturer: Certainfeud or approved equal Weatherboard cedar lap siding 8" wide Colour: Slate 525</p> <p><b>EF4b</b> FIBER CEMENT SIDING HORIZONTAL FIBER CEMENT SIDING Manufacturer: Certainfeud or approved equal Weatherboard cedar lap siding 8" wide Colour: Cedar 523</p> <p><b>EF5</b> COMPOSITE ALUMINUM PANEL Manufacturer: Mitsubishi Plastics Composite Plastics Inc. or approved equal ALPOLIC "Bone White" AGT-30 Dry Joint System</p> <p><b>EF6</b> PRECAST CONCRETE SILL Architectural concrete 3 1/2H x 5 9/16" W x 24" L Manufacturer : Shouldice Super sill 424 Finish: Tapestry Colour: To match EF1- BL1,2&amp;3</p> <p><b>EF7</b> PREFINISHED METAL FLASHING/FASCIA 24 GA. PREFINISHED METAL FLASHING/FASCIA *Refer to schedules for colour and material specifications</p>	<p><b>EF8</b> DECORATIVE MOULDING EXPANDED POLYSTYRENE MOULDING TO MATCH PROFILES INDICATED ON DRAWINGS ACRYLIC STUCCO FINISH Finish: Sanpebble BM 2124-10 WROUGHT IRON</p> <p><b>EF9a</b> GLAZED DOORS &amp; WINDOWS Clear anodized aluminum frames. Clear insulated vision glass/low-E glazing (tempered glass to be used at doors and sidelights/sidelites)</p> <p><b>EF9b</b> SPANDREL ALUMINUM PANEL 2" Insulated clear anodized aluminum panel finished at both sides</p> <p><b>EF10a</b> METAL SLATS 2" x 2" x 1/8" HSS GALVANIZED LUBES HORIZONTAL AND HHS 6 x 3 VERTICAL SUPPORTS, DESIGNED TO CARRY SIGNAGE AND STAMPED BY PENG</p> <p><b>EF10b</b> METAL SLATS 6" x 3" HSS GALVANIZED LUBES HORIZONTAL AND HHS 6 x 3 VERTICAL SUPPORTS, DESIGNED TO CARRY SIGNAGE AND STAMPED BY PENG</p> <p><b>EF11</b> SIGNAGE (BY TENANT) At EIFS construction add 16 Ga sheet metal sheet between sheathing and stud at SIGNAGE locations.</p> <p><b>EF12</b> H.M. DOORS &amp; FRAMES Prefinished hollow metal doors and frames Painted to match adjacent material</p> <p><b>EF13</b> WOOD FINISH</p>
---	---	--



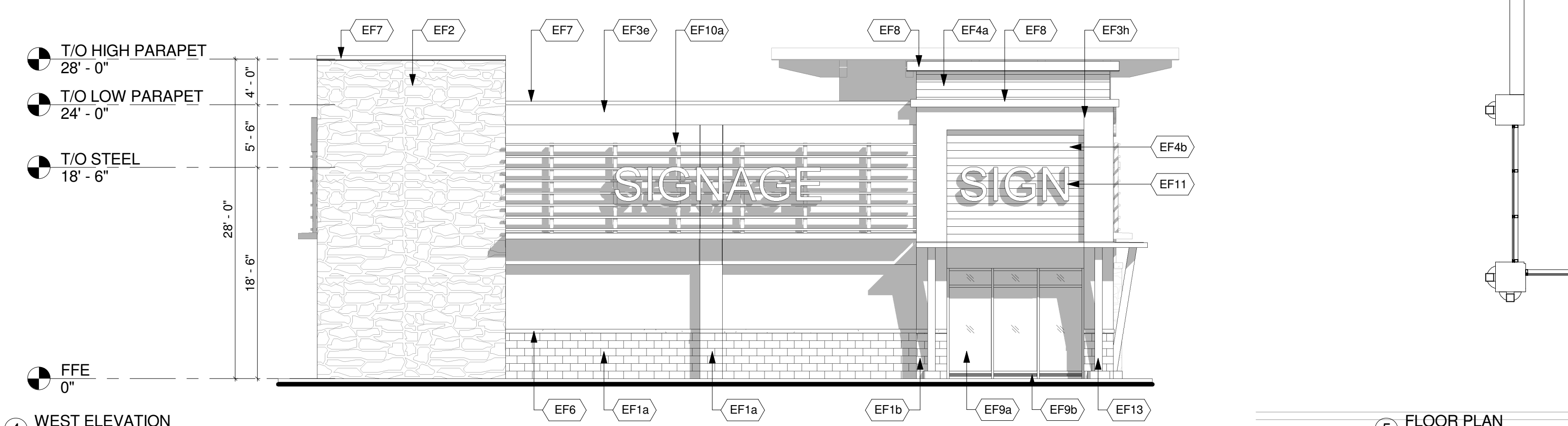
1 SOUTH ELEVATION  
1/8" = 1'-0"



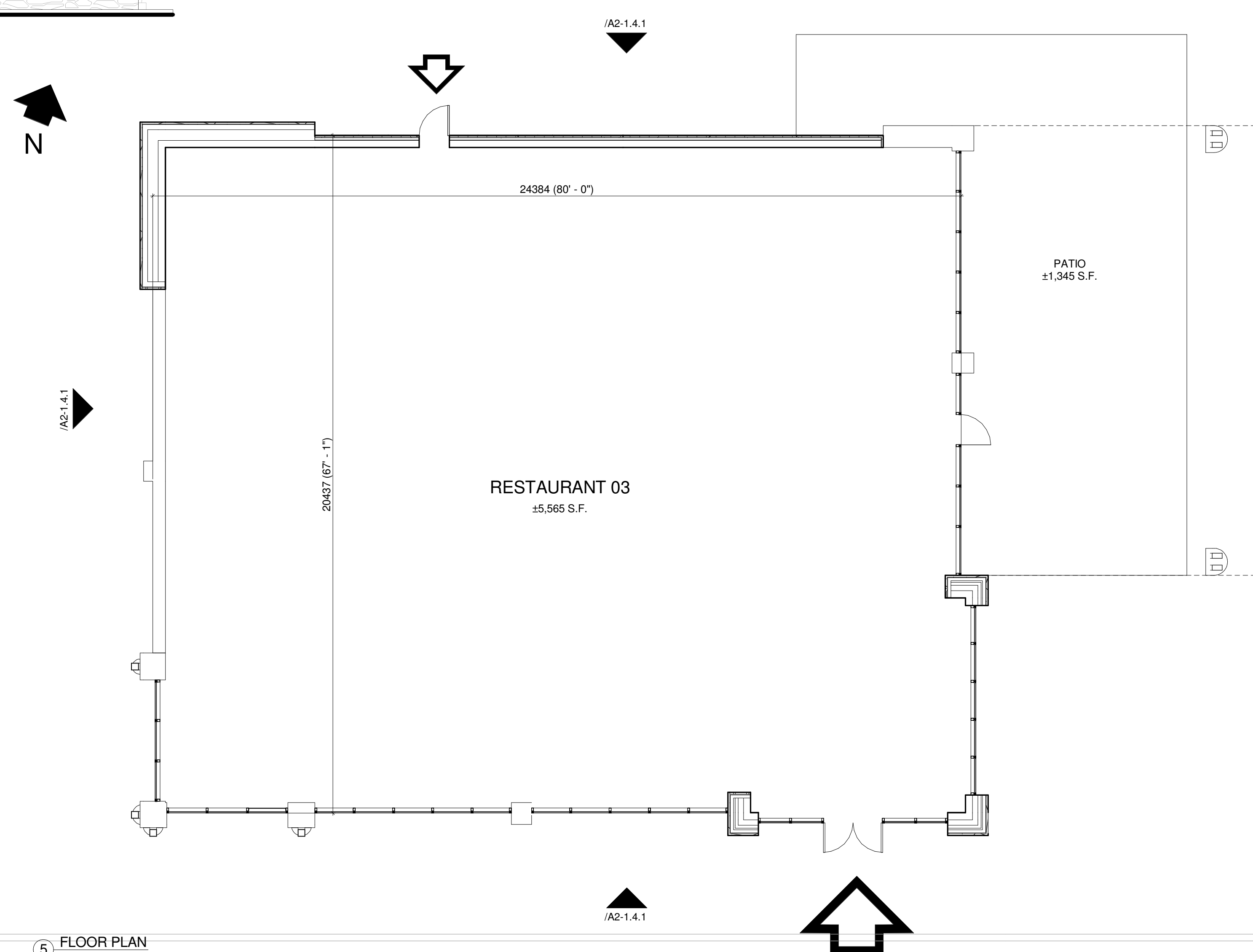
2 NORTH ELEVATION  
1/8" = 1'-0"



3 EAST ELEVATION  
1/8" = 1'-0"



4 WEST ELEVATION  
1/8" = 1'-0"



5 FLOOR PLAN  
1/8" = 1'-0"

This drawing, as an instrument of service, is provided by and is the property of Turner Fleischer Architects Inc. The contractor must verify and accept responsibility for all dimensions and conditions on site and must notify Turner Fleischer Architects Inc. of any variations from the specified information. This drawing is not to be scaled. The architect is not responsible for the accuracy of survey, structural, mechanical, electrical, etc. information shown on this drawing. Refer to the appropriate consultant's drawings before proceeding with the work. Construction must conform to all applicable codes and requirements of authorities having jurisdiction. The contractor working from drawings not specifically marked for construction must assume full responsibility and bear costs for any corrections or damage resulting from his work.

1	2014-11-17	ISSUED FOR COORDINATION	MK
Issue / Rev:	Date:	Issue / Revision:	By:
PROJECT ARCHITECT			
<b>TURNER FLEISCHER</b>			
TURNER FLEISCHER ARCHITECTS INC. 67 Leslie Road, Toronto, ON Canada M3B 2T8 Telephone (416) 415-2222, Faxline (416) 415-6777 turnerfleischer.com			
LANDSCAPE CIVIL		<b>IBI GROUP</b>	
Architects, Engineers, Planners 5th Floor, 230 Richmond Street West Toronto, ON M5V 1V6, Canada Tel: (416) 596-1930 Fax: (416) 596-0644		333 Preston Street Tower 1, Suite 400 Ottawa, Ontario Canada K1S 5H4 Tel: (613) 225-1311 Fax: (613) 225-9868	
ELECTRICAL			
<b>h</b> HAMMERSCHLAG + JOFFE INC.			
69 Leslie Road Toronto, Ontario Canada M3B 2T8 T: (416) 444-9263 F: (416) 444-1865 E: enj@hnyd.com			
PLANNER			
<b>FOTENN PLANNING &amp; URBAN DESIGN</b>			
223 McLeod Street   Ottawa, ON   K2P 0Z8 T: 613.730.5709 ext.234   F: 613.730.1136			
DEVELOPER			
<b>RIOCAN</b>			
RioCan Real Estate Investment Trust 2300 Yonge Street Suite 520 Toronto, Ontario M4P 1E4 (416) 645 6330			
Project:			
TANGER OUTLETS KANATA KANATA, ONTARIO			
Drawing Name:			
RESTAURANT 3 ELEVATIONS AND FLOOR PLAN			
Proj no.:		Date:	
12.258		NOVEMBER 17, 2014	
Drawn by:		Scale:	
MK		As indicated	
Checked by:		Drawing No.:	
RD			
<b>A2-1.4.1</b>			

F:\P09\12258\12258-15-REV\12258-A2-1 (BIE B)\12258-A2-1.4 (RESTAURANT) 03.rvt



PRELIMINARY

F:\proj\12258\12258-15- REVIT\ELEVATIONS\A2-1 (SITE B)\12258-A2-1.4 (RESTAURANT 03).rvt



## TANGER OUTLETS KANATA

KANATA, ONTARIO

PERSPECTIVE

TURNER FLEISCHER



www.turnerfleischer.com

NOVEMBER 17, 2014  
12.258 A2-1.4.2