

NOTES

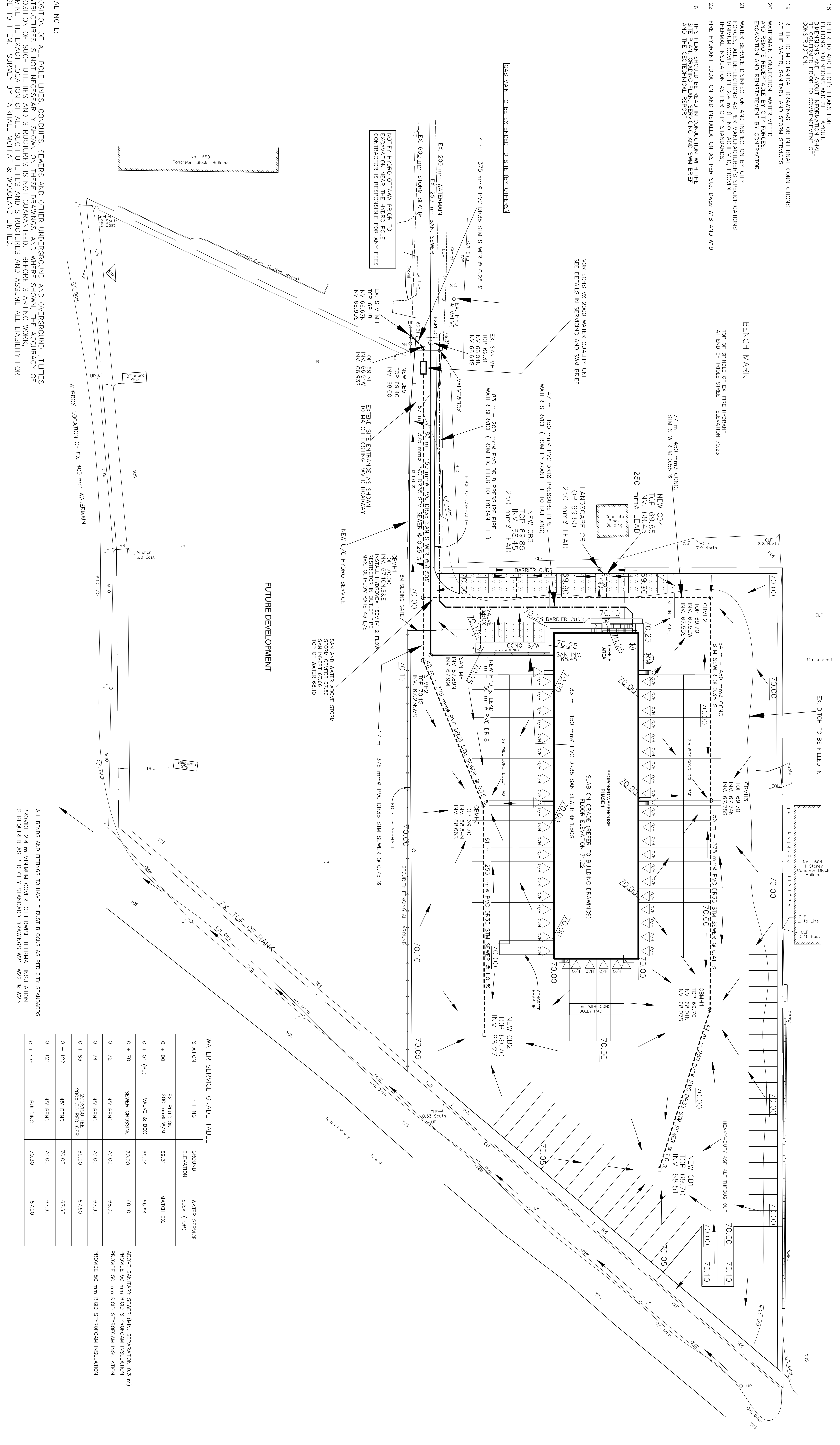
- 1 DO NOT SCALE DRAWING
- 2 VERIFY LOCATIONS AND ELEVATIONS OF EXISTING SERVICES TO BE MAINTAINED OR RELOCATED PRIOR TO COMMENCEMENT OF WORK TO OBTAIN LOCATES. CALL (613) 797-8534 BEFORE EXCAVATING
- 3 CONTRACTOR IS TO COMPLY WITH THE CITY OF OTTAWA AND / OR ONTARIO PROVINCIAL STANDARDS (OPS)
- 4 ALL WORK AND UTILITIES SHALL BE IN ACCORDANCE WITH THE CITY OF OTTAWA AND / OR ONTARIO PROVINCIAL STANDARDS (OPS)
- 5 NEW SANITARY AND STORM MAINS AND SEWERS TO BE 1200 mm AS PER OPS90 701.010
- 6 SANITARY MANHOLE BENCHING AS PER CITY STANDARD DRAWING 524 (WATER TIGHT)
- 7 NEW CATCH BASINS ARE STANDARD SIZE 600 mm X 600 mm AS PER OPS90 705.010
- 8 CATCH COVER AS PER CITY STANDARD DRAWING 519
- 9 CATCH BASIN COVER AS PER CITY STANDARD DRAWING 519.1
- 10 STORM MANHOLES AND CHAMBERS TO BE CONSTRUCTED TO CITY STANDARD DRAWING 519.1
- 11 REFER TO CITY STD. DWGS. S6, S7 & W17 FOR SEWER AND WATER TRENCH DETAILS
- 12 BARRIER AND DERESSED CURB AS PER STANDARD DRAWING 501.1
- 13 NEW STORM SEWERS TO BE INSULATED WITH 50 mm THICK RIGID STYROFOAM
- 14 LEAKAGE TEST IS REQUIRED USING CCTV AS REQUIRED BY THE CITY OPS90 407. TEST TO BE WITNESSED BY A PROFESSIONAL ENGINEER
- 15 CONTRACTOR IS RESPONSIBLE TO OBTAIN ALL NECESSARY PERMITS PRIOR TO CONSTRUCTION
- 16 RESTORE PAVEMENT STRUCTURE, CURBS AND SURFACES ON EXISTING ROADS TO THEIR ORIGINAL CONDITIONS. REINSTATE BARBER CURB AT EXISTING ENTRANCES
- 17 REFER TO ARCHITECT'S PLANS FOR ALL DIMENSIONS AND LAYOUT INFORMATION SHALL BE CONFIRMED PRIOR TO COMMENCEMENT OF CONSTRUCTION
- 18 REFER TO MECHANICAL DRAWINGS FOR INTERNAL CONNECTIONS OF THE WATER, SANITARY AND STORM SERVICES
- 19 WATERMAIN CONNECTION, WATER METERS AND REMOTE RECEPTACLE BY CITY FORCES. EXCAVATION AND REINSTATEMENT BY CONTRACTOR
- 20 WATER SERVICE DISSECTION AND INSPECTION BY CITY FORCES. ALL DEFLECTIONS AS PER MANUFACTURER'S SPECIFICATIONS MINIMUM INSULATION AS PER CITY STANDARDS
- 21 FIRE HYDRANT LOCATION AND INSTALLATION AS PER STD. DWGS W18 AND W19
- 22 THIS PLAN SHOULD BE READ IN CONJUNCTION WITH THE SITE PLAN, GRADING PLAN, SERVING AND SWM BRIEF AND THE GEOTECHNICAL REPORT

LEGEND

- 71.60 PROPOSED ELEVATION
- 43.351C TOP OF CURB
- TOP OF FLOW
- DIRECTION OF FLOW
- UP UTILITY POLE
- DC DERESSED CURB
- SANITARY SEWER
- STORM SEWER
- WATERMAIN
- PROPERTY LINE
- LIGHT DUTY ASPHALT
- HEAVY DUTY ASPHALT

BENCH MARK

TOP OF SPUR OF EX. FIRE HYDRANT
AT END OF THOLE STREET - ELEVATION 70.23



WATER SERVICE GRADE TABLE

STATION	FITTING	GROUND ELEVATION	WATER SERVICE ELEV. (TOP)
0 + 00	EX. PLUG ON 250 mm 1/2"	68.31	MAJOR EX.
0 + 04 (RJ)	VALVE & BOX	69.34	66.94
0 + 70	SEWER CROSSING	70.00	68.10
0 + 72	45° BEND	70.00	68.00
0 + 74	45° BEND	70.00	67.90
0 + 83	200X150 TEE 200X150 REDUCER	68.90	67.50
0 + 122	45° BEND	70.05	67.65
0 + 124	45° BEND	70.05	67.65
0 + 130	BUILDING	70.30	67.90

ABOVE SANITARY SEWER (MIN. SEPARATION 0.3 m)
PROVIDE 50 mm RIGID STYROFOAM INSULATION
PROVIDE 50 mm RIGID STYROFOAM INSULATION
PROVIDE 50 mm RIGID STYROFOAM INSULATION

GENERAL NOTE:
THE POSITION OF ALL POLE LINES, CONDUITS, SEWERS AND OTHER UNDERGROUND AND OVERGROUND UTILITIES AND STRUCTURES IS NOT NECESSARILY SHOWN ON THESE DRAWINGS. BEFORE STARTING WORK, THE ACCURACY OF THE POSITION OF SUCH UTILITIES AND STRUCTURES IS NOT GUARANTEED. THE WORK, DAMAGE TO THEM, SURVEY BY FAIRHALL MCFARLANE & WOODLAND LIMITED.

Registered Owner:
REIMER WORLD LOGISTICS CORP.
SUITE 2900, 201 PORTAGE AVENUE
WINNIPEG, MANITOBA, R3B 3A6
Tel: (431) 729-2211
Cell: (416) 678-7024
e-mail: reimerw@reimerworld.com

Project Manager:
ARGUE CONSTRUCTION LTD.
105 WILLOWDALE RD.
SCARBOROUGH, ONTARIO
Tel: (416) 831-7044
Tel: (416) 831-6344
e-mail: argue@argueconstruction.ca

LEGAL DESCRIPTION:
ALL OF LOTS 64 AND 70 AND
PART OF LOTS 55, 56, 57, 58, 59,
60, 61 AND 71 OF THOLE STREET
AND PARTS OF THOLE STREET

(As Closed by Judges Order Inst. LT1225616
and by Law 2004-21 Inst. OC3864689)

REGISTERED PLAN 63
CITY OF OTTAWA

PREPARED BY
**ANNIS OSULLIVAN, VOLLEBERG ONTARIO
LAND SURVEYORS**
JANUARY 4, 2006

Civil Engineer:
CAPITAL ENGINEERING GROUP LTD.
110 DOSSLETTER WAY
OTTAWA, ONTARIO K1G 6S5
Tel: (613) 739-0776
Fax: (613) 739-7302
e-mail: ceg@cegroup.com



THIS DRAWING WAS NOT USED FOR
CONSTRUCTION OF THE PROJECT.
COPYRIGHT RESERVED. THIS DRAWING IS THE
EXCLUSIVE PROPERTY OF LEONARD & KOFFMAN
ARCHITECTS AND SHALL NOT BE USED WITHOUT THE
ARCHITECT'S CONSENT.

**LEONARD & KOFFMAN
ARCHITECT**
Suite 301, 1800 Osgoode Avenue
OTTAWA, Ontario K1Z 1Z2
Phone (613) 729-2211
Fax (613) 729-0776
E-mail: leonard@leand-koff.com

OWNER: **REIMER PROPERTIES INC.**

PROJECT: **ARPEX MOTOR EXPRESS
TRUCK TERMINAL
1399 ST. LAURENT BLVD.
OTTAWA, ON.**

DRAWING TITLE: **SERVICING PLAN**

DATE: DEC 3, 28/14
SCALE: 1 : 500

PROJECT NORTH

PROJECT N°: **1408**

DRAWING N°: **G1**