

NOTES

- DO NOT SCALE DRAWING
- VERIFY LOCATIONS AND ELEVATIONS OF EXISTING SERVICES PRIOR TO CONSTRUCTION. CONTRACTOR IS RESPONSIBLE TO OBTAIN LOCUS
- CONTRACTOR IS TO COMPLY WITH THE CITY OF OTTAWA REQUIREMENTS FOR TRAFFIC CONTROL WHEN WORKING ON MUNICIPAL ROAD.
- ALL WORK AND MATERIALS SHALL BE IN ACCORDANCE WITH CITY OF OTTAWA STANDARDS AND SPECIFICATIONS. CONTRACTOR IS RESPONSIBLE TO OBTAIN ALL NECESSARY PERMITS PRIOR TO CONSTRUCTION
- RESTORE PAVEMENT STRUCTURE, CURBS AND SURFACES ON EXISTING ROADS TO THEIR ORIGINAL CONDITIONS REINSTATE BARBER CURB AT EXISTING ENTRANCE
- REFER TO ARCHITECT'S PLANS FOR BUILDING DIMENSIONS AND SITE LAYOUT.
- DIMENSIONS AND LAYOUT INFORMATION SHALL BE CONSIDERED FINAL FOR CONSTRUCTION.

REFER TO SITE PLAN AND SPECIFICATIONS FOR PHASING OF THE WORK

LEGEND

- 71.60 PROPOSED ELEVATION
- 1.36' EXISTING ELEVATION
- 43.351C TOP OF CURB
- UP DIRECTION OF FLOW
- DC UTILITY POLE
- DEPRESSED CURB
- STORM SEWER
- SANITARY SEWER
- WATERMAIN
- PROPERTY LINE
- LIGHT DUTY ASPHALT
- HEAVY DUTY ASPHALT
- PLACE FILTER CLOTH UNDER THE GRATES TO REMAIN UNTIL LANDSCAPING IS COMPLETED
- SILT FENCE

EROSION AND SEDIMENT CONTROL

THE CONTRACTOR SHALL IMPLEMENT BEST MANAGEMENT PRACTICES, TO PROVIDE FOR THE PROTECTION OF THE AREA DRAINAGE SYSTEM AND THE RECEIVING WATER COURSE, DURING CONSTRUCTION ACTIVITIES. THIS INCLUDES LIMITING THE AMOUNT OF EXPOSED SOIL, USING FILTER CLOTH UNDER THE GRATES OF CATCHBASINS AND MANHOLES AND INSTALLING SILT FENCES AND OTHER EFFECTIVE SEDIMENT TRAPS.

SEDIMENT AND EROSION CONTROL MEASURES TO CONFORM TO MORE GUIDELINE B-6* GUIDELINES FOR EVALUATING CONSTRUCTION ACTIVITIES IMPACTING ON WATER RESOURCES * OR LOCAL STANDARDS AND CODES WHICHEVER IS MORE STRINGENT.

THE MEASURES SHALL MEET THE FOLLOWING OBJECTIVES:

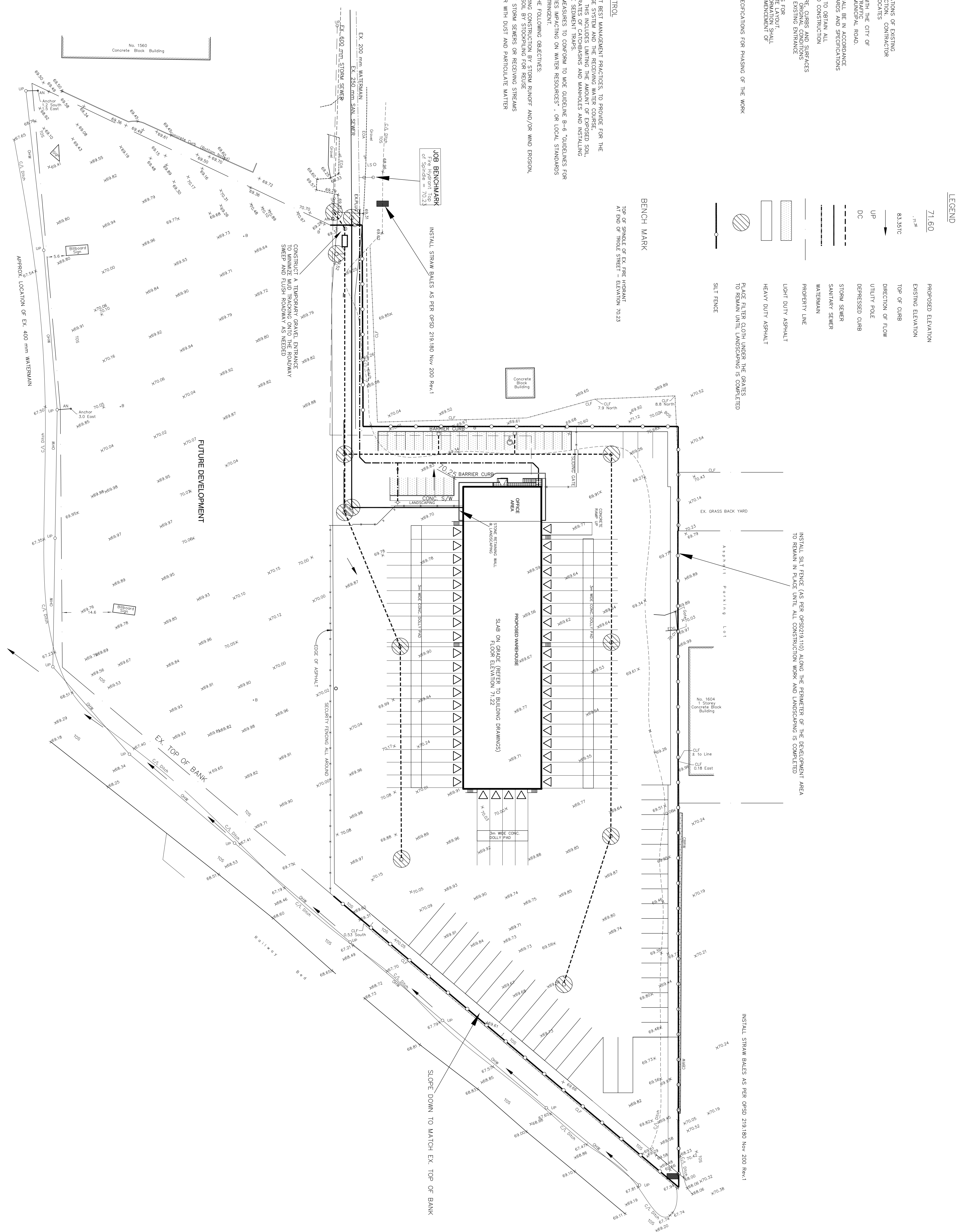
- PREVENT LOSS OF SOIL DURING CONSTRUCTION BY STORM RUNOFF AND/OR WIND EROSION,
- INCLUDING PROTECTING TOPSOIL BY STOCKPILING FOR REUSE
- PREVENT SEDIMENTATION OF STORM SEWERS OR RECEIVING STREAMS
- PREVENT POLLUTING THE AIR WITH DUST AND PARTICULATE MATTER

BENCH MARK

TOP OF SPURGE OF EX. FIRE HYDRANT AT END OF THOLE STREET - ELEVATION 70.23

JOB BENCHMARK
Fire Hydrant Top of Spurge = 70.23

INSTALL STRAW BALES AS PER OPSD 219.180 Nov. 2001 Rev.1

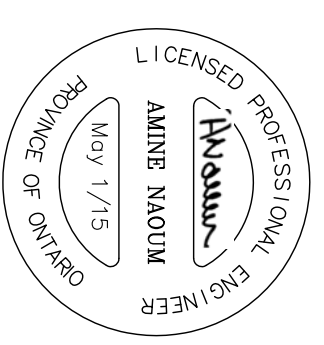


Registered Owner:
REIMER WORLD LOGISTICS CORP.
SUITE 2900, 201 PORTAGE AVENUE
WINNIPEG, MANITOBA, R3B 3K6
Tel: (431) 222-1111
Cell: (416) 678-7004
e-mail: reimer@reimerlogistics.com

Project Manager:
ARGUE CONSTRUCTION LTD.
108 WILLOWDALE RD.
OTTAWA, ONTARIO, K1J 1P4
Tel: (613) 831-6344
Fax: (613) 831-7044
e-mail: info@argueconstruction.ca

LEGAL DESCRIPTION:
ALL OF LOTS 64 AND 70 AND PART OF LOTS 55, 56, 57, 58, 59, 65, 69 AND 71 AND PARTS OF THOLE STREET (as closed by Judge's Order Inst. LT1225616 and by By-Law 2004-21 Inst. OC396489) REGISTERED PLAN 63 CITY OF OTTAWA

PREPARED BY
ANNIS OSULLIVAN, VOLLEBERG ONTARIO LAND SURVEYORS
JANUARY 4, 2006



Civil Engineer:
CAPRAL ENGINEERING GROUP LTD.
110 DOSSLETTER WAY
OTTAWA, ONTARIO, K1G 4S5
Tel: (613) 739-0776
Fax: (613) 739-7202
e-mail: info@capraleng.com

REV.	DATE	DESCRIPTION
2	May 1/15	Revised to Address City Comments
1	Dec 4/14	

ISSUED FOR THE PURPOSE OF:
PERMIT
TENDER
CONSTRUCTION

IT IS THE RESPONSIBILITY OF THE APPROPRIATE DIMENSIONS ON SITE AND REPORT ALL ERRORS AND/OR OMISSIONS TO THE ARCHITECT. ALL FIELD CORRECTIONS AND COMMENTS WITH ALL FIELD DIMENSIONS AND DIMENSIONS SHALL BE DO NOT SCALE DRAWINGS.

THIS DRAWING MAY NOT BE USED FOR ANY OTHER PROJECT WITHOUT THE WRITTEN PERMISSION OF LEONARD & KOFFMAN ARCHITECTS. ANY REUSE OF THIS DRAWING WITHOUT THE WRITTEN PERMISSION OF LEONARD & KOFFMAN ARCHITECTS IS STRICTLY PROHIBITED.

LEONARD & KOFFMAN ARCHITECT
Suite 301, 1300 Oshawa Avenue
OTTAWA, Ontario K1Z 1T2
Phone: (613) 729-2211
Fax: (613) 729-0776
E-mail: leonard@leandandkoff.com

OWNER:
REIMER PROPERTIES INC.

PROJECT:
APEX MOTOR EXPRESS TRUCK TERMINAL 1399 ST. LAURENT BLVD. OTTAWA, ON.

DRAWING TITLE:
EROSION AND SEDIMENT CONTROL PLAN

DATE: DEC. 4/14
SCALE: 1:500
PROJECT N°: 1408
DRAWING N°: G4

