

NURSERY STOCK MATERIAL:

KEY	BOTANICAL NAME	COMMON NAME	QUANTITY	SIZE	REMARKS
LARGE DECIDUOUS TREES					
AR	ACER RUBRUM	RED MAPLE	3	70mm CAL.	B.B./W.B.
CO	CESTIS OCCIDENTALIS	COMMON HACKBERRY	3	70mm CAL.	B.B./W.B.
QR	QUERCUS RUBRA	RED OAK	3	70mm CAL.	B.B./W.B.
UM	ULMUS MORTON	ACCOLADE ELM	3	70mm CAL.	B.B./W.B.
LARGE CONIFEROUS TREES					
PG	PICEA PUNGENS 'GLAUCO'	WHITE SPRUCE	5	2m HT.	B.B./W.B.
SMALL DECIDUOUS TREES					
AC	AMELANCHIER CANADENSIS	SERVICEBERRY	7	50mm CAL.	B.B./W.B.
CMT	CRATAEGUS MORDENENSIS 'TOBA'	TOBA HAWTHORN	2	50mm CAL.	B.B./W.B.
SR	SYRINGA RETICULATA	JAPANESE TREE LILAC	2	50mm CAL.	B.B./W.B.
SHRUBS					
PO	PHYSCARPUS OPUULIFOLIUS 'DART'S GOLD'	'DART'S GOLD' NINEBARK	30	800mm HT.	POTTED 1.0m O.C.
RHA	RHUS AROMATICA 'GRO-LOW'	FRAGRANT SUMAC 'GRO-LOW'	33	500mm HT.	POTTED 900mm O.C.
RA	RIBES ALPINUM	ALPINE CURRANT	20	600mm HT.	POTTED 900mm O.C.

HEDGEROW PLANT MATERIAL:

BOTANICAL NAME	COMMON NAME	QUANTITY											TOTAL	SIZE	REMARKS	
		1	2	3	4	5	6	7	8	9	10	11				
TREES																
ACER RUBRUM	RED MAPLE	0	0	0	0	1	1	1	0	1	0	0	4	2.0m HT.	POTTED 2.0m O.C.	
ACER SACCHARUM	SUGAR MAPLE	0	0	0	0	1	1	1	1	0	0	5	2.5m HT.	POTTED 2.0m O.C.		
AMELANCHIER CANADENSIS	SERVICEBERRY	2	2	2	2	2	2	2	3	2	0	19	800mm HT.	B.B. OR POT 600mm O.C.		
BETULA PAPERIFERA	PAPER BIRCH	0	0	0	0	1	1	1	1	0	0	5	2.0m HT.	POTTED 2.0m O.C.		
CESTIS OCCIDENTALIS	COMMON HACKBERRY	0	0	0	0	1	1	1	1	0	0	5	2.0m HT.	POTTED 2.0m O.C.		
CRATAEGUS CRUSGALLI	COCKSPUR HAWTHORN	0	4	4	0	1	1	1	1	0	0	13	600mm HT.	B.B. OR POT 600mm O.C.		
LARIX LARICINA	TAMARAC	0	0	0	0	1	1	1	1	0	0	5	1.0m HT.	POTTED 2.0m O.C.		
OSTRYA VIRGINIANA	IRONWOOD	0	0	0	0	1	1	1	1	0	0	5	2.0m HT.	POTTED 2.0m O.C.		
PRINUS STROBUS	WHITE PINE	0	0	0	0	1	1	1	1	0	0	5	1.0m HT.	POTTED 2.0m O.C.		
POPULUS TREMULOIDES	TREMBLING ASPEN	0	0	0	0	1	1	1	0	0	0	4	2.5m HT.	POTTED 2.0m O.C.		
QUERCUS ALBA	WHITE OAK	0	0	0	0	1	0	1	0	0	0	2	2.5m HT.	POTTED 2.0m O.C.		
QUERCUS RUBRA	RED OAK	0	0	0	0	1	0	1	0	0	0	3	2.5m HT.	POTTED 2.0m O.C.		
THUJA OCCIDENTALIS ARBORVITAE	WHITE CEDAR	0	0	0	0	1	1	1	1	0	0	5	2.0m HT.	POTTED 2.0m O.C.		
SHRUBS																
ALNUS INCANA RUGOSA	SPECKLED ALDER	2	2	2	2	2	2	2	2	2	2	22	600mm HT.	B.B. OR POT 600mm O.C.		
CORNUS ALTERNIFOLIA	PAGODA DOGWOOD	2	3	3	2	3	3	4	3	3	3	32	600mm HT.	B.B. OR POT 600mm O.C.		
CORNUS PACMOSA	GREY DOGWOOD	2	2	2	2	2	2	3	2	2	2	23	600mm HT.	B.B. OR POT 600mm O.C.		
RHUS TYPHINA	STAGHORN SUMAC	2	4	4	2	2	2	2	1	2	3	27	600mm HT.	B.B. OR POT 600mm O.C.		
SYRINGA VULGARIS	COMMON LILAC	7	0	0	7	0	0	0	0	7	7	28	600mm HT.	B.B. OR POT 600mm O.C.		

Key Plan:

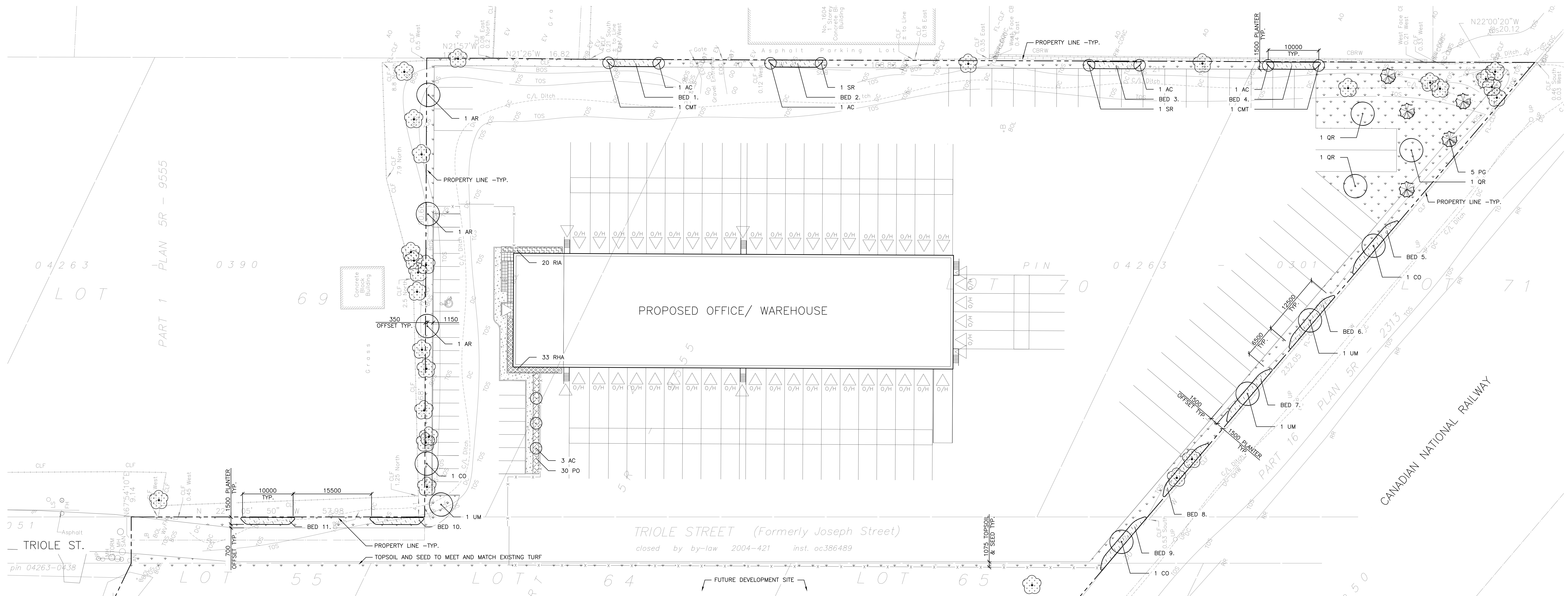
Additional Information:
OWNER:
 REMER WORLD LOGISTICS CORP.
 201 PORTAGE AVENUE, SUITE 2900,
 WINNIPEG, MB, R3B 3K6,
 (204) 958-5300

Legend:

- CONIFEROUS TREE (1/1.1)
- DECIDUOUS TREE (1/1.1)
- TOPSOIL (100mm) AND SEED
- HEDGEROW PLANTING (3/4 L1)
- CONCRETE, REFER TO TREE DWGS
- EXISTING TREE TO BE PROTECTED, REFER TO THE TREE CONSERVATION REPORT

Notes:

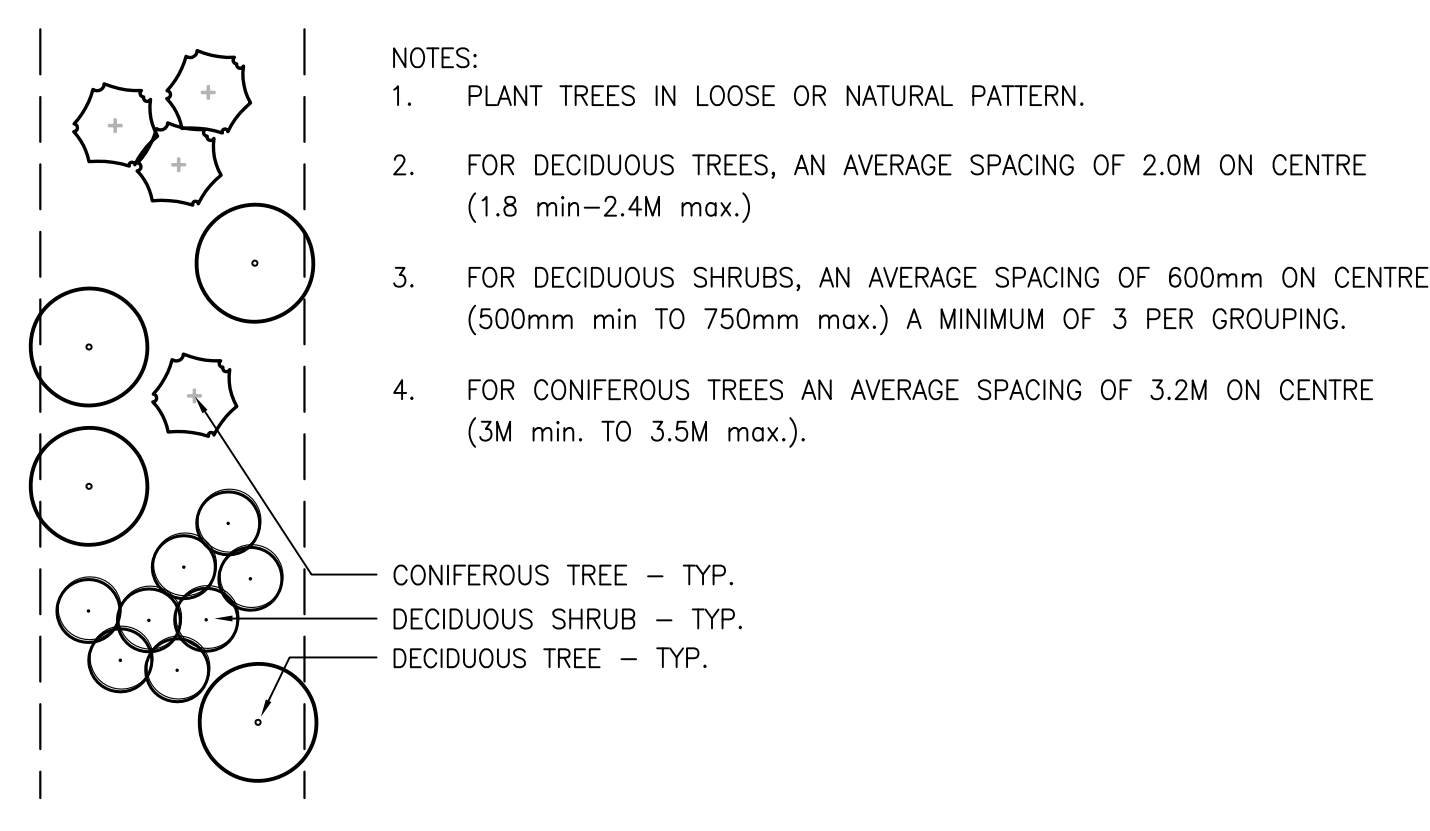
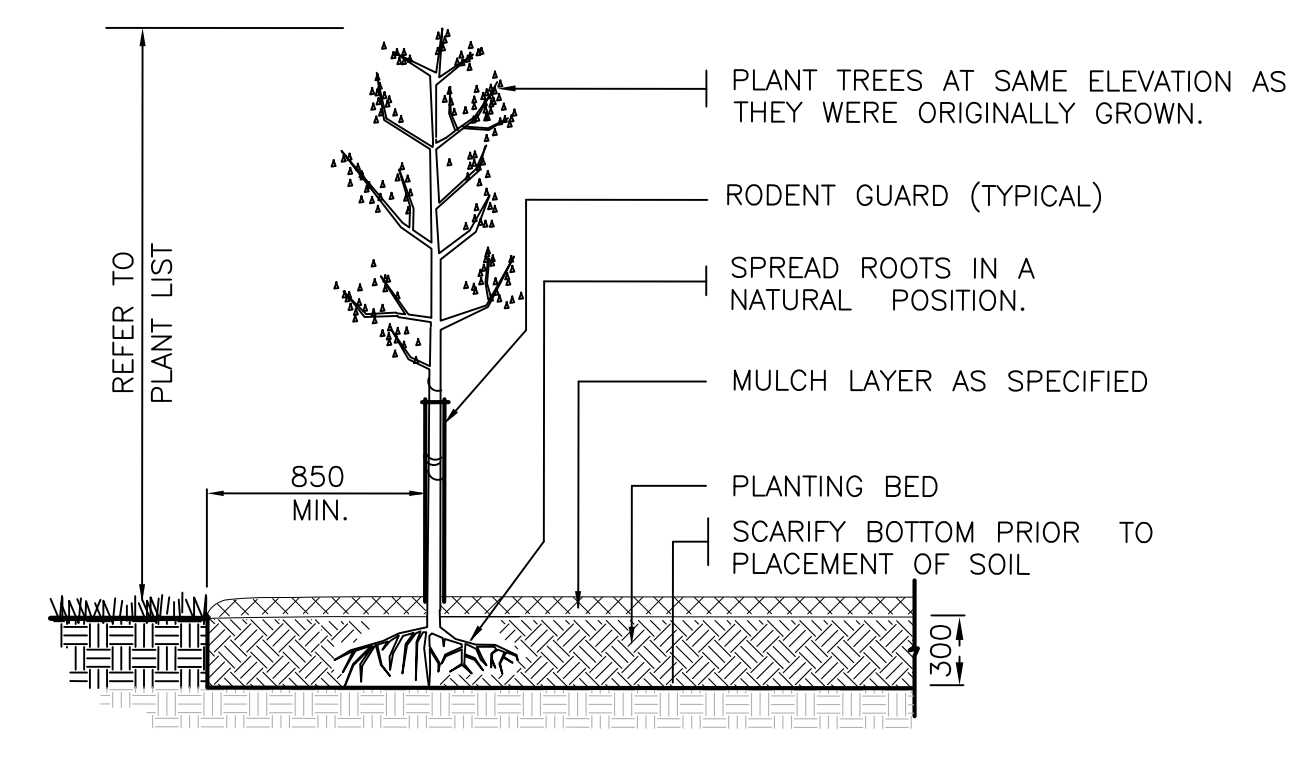
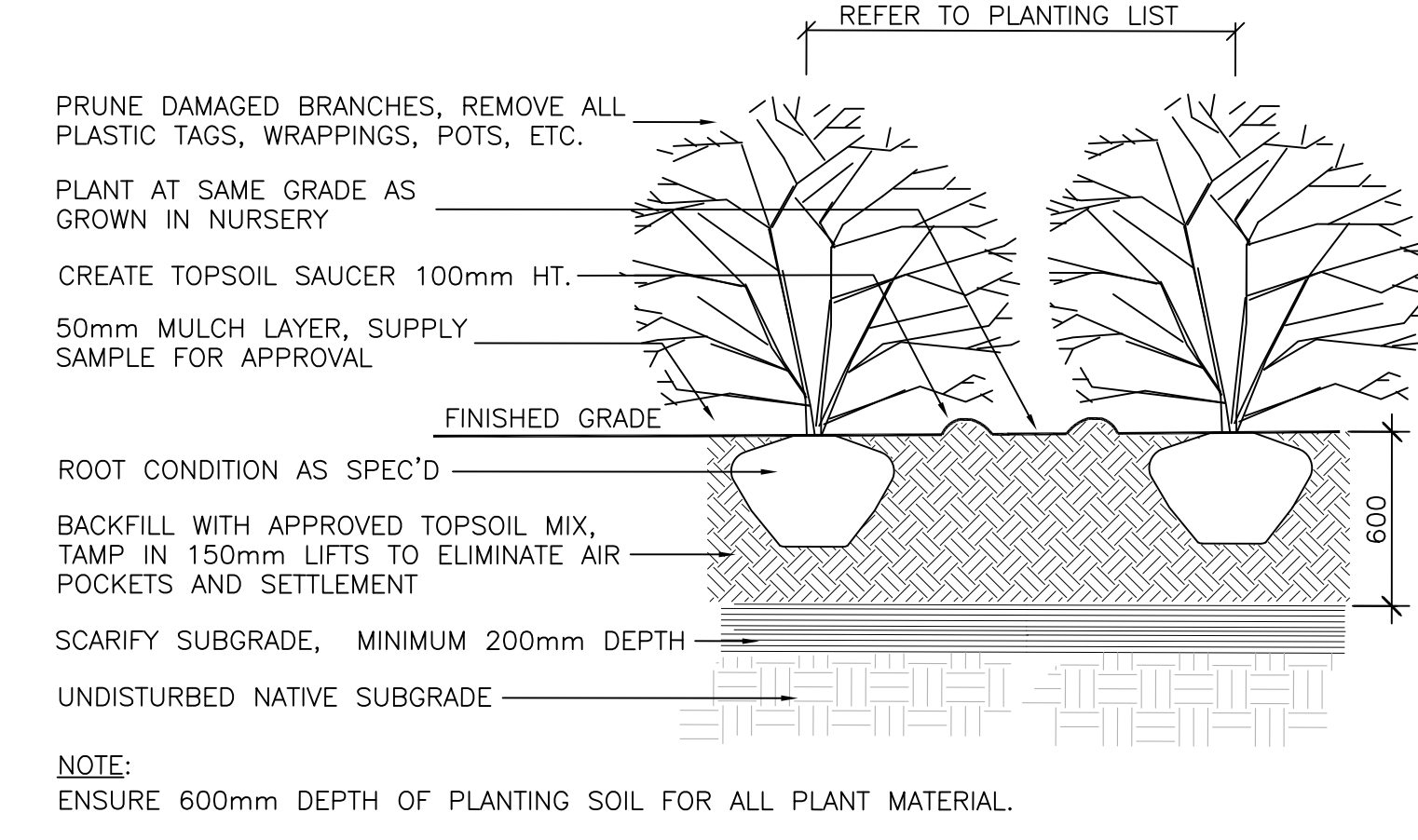
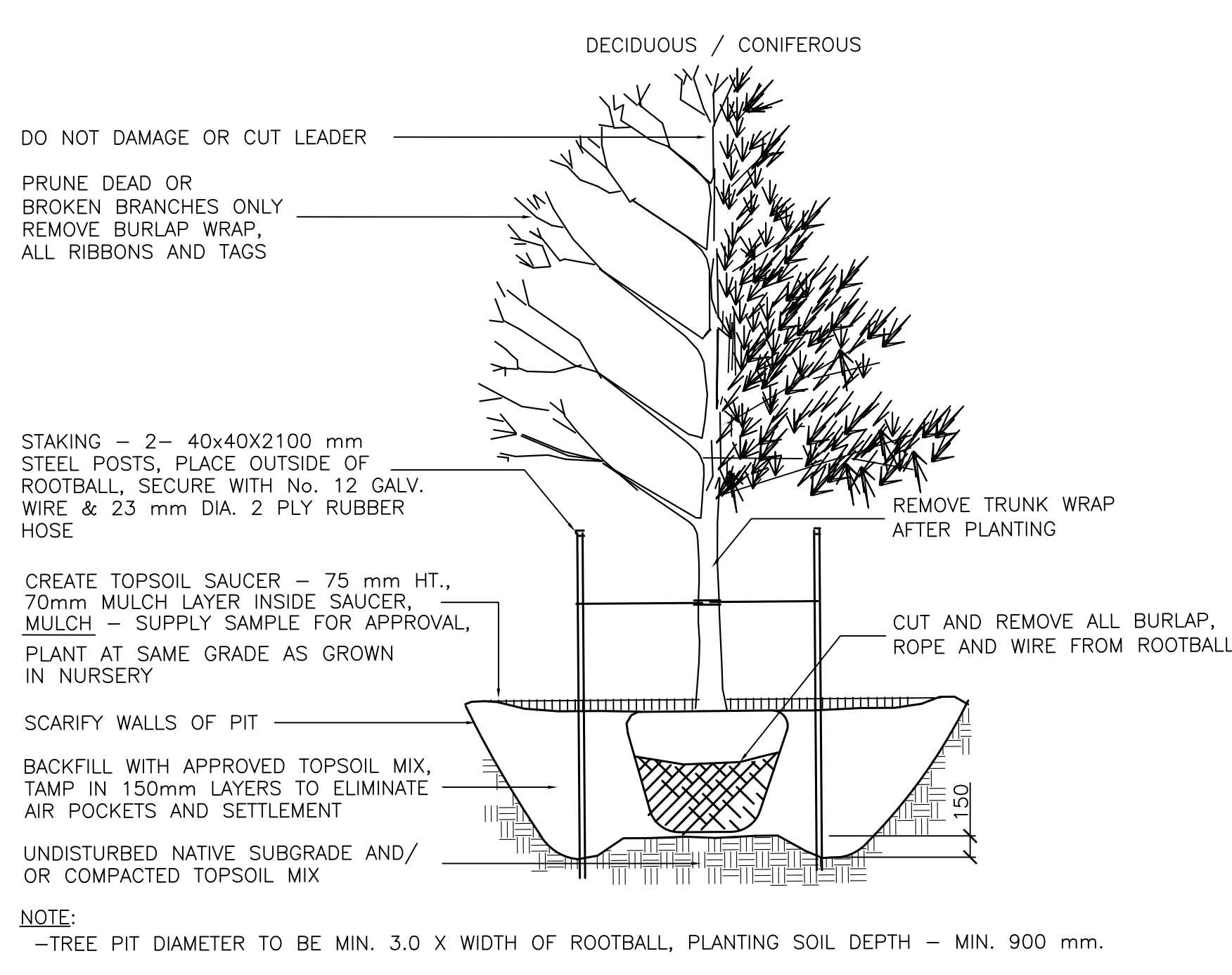
- TOPSOIL AND SEED SHALL BE APPLIED TO ALL DISTURBED SOFT LANDSCAPE AREAS, UNLESS OTHERWISE INDICATED.
- FOR SIDEWALKS, CURBS AND PARKING, REFER TO CIVIL DRAWINGS.



2	RE-ISSUED FOR REVIEW	09 DEC. 2014
1	ISSUED FOR REVIEW	17 NOV. 2014
No.	Revision	Date

North:

Stamp:



- 1 TREE PLANTING - TYP. N.T.S.
- 2 SHRUB PLANTING - TYP. N.T.S.
- 3 HEDGEROW TREE PLANTING - TYP. N.T.S.
- 4 HEDGEROW PLANTING LAYOUT - TYP. N.T.S.

CSW Landscape Architecture
 Urban Design
 Site Planning
 Recreation and Park Planning
 Project Management

1960 Scott Street, Suite 200, Ottawa, Ontario K1Z 8L8
 Tel: (613) 729-4538 Fax: (613) 729-3018

1. All measurements in millimeters unless specified otherwise. Do not scale drawing. All drawings to be read in conjunction with written specifications.

2. Copyright reserved. This drawing is the exclusive property of Corush Sunderland Wright Ltd. and shall not be used without the consent thereof.

3. This Drawing may not be used for construction until signed by the landscape architect. It is the responsibility of the contractor to:
 • check and verify all dimensions on site;
 • report all errors and/or omissions to the landscape architect;
 • comply with all pertinent codes and by-laws;
 • check and verify locations of all underground services with all local utilities prior to any digging.

Project:
APEX MOTOR EXPRESS TRUCK TERMINAL
1599 ST. LAURENT BLVD.
 OTTAWA, ONTARIO

Drawing: LANDSCAPE PLAN

Scale: 1:300 **Date:** 17 NOV. 2014

Drawn By: JG **Checked By:** ML

Project Number: 1800-02 **Sheet Number:** L1