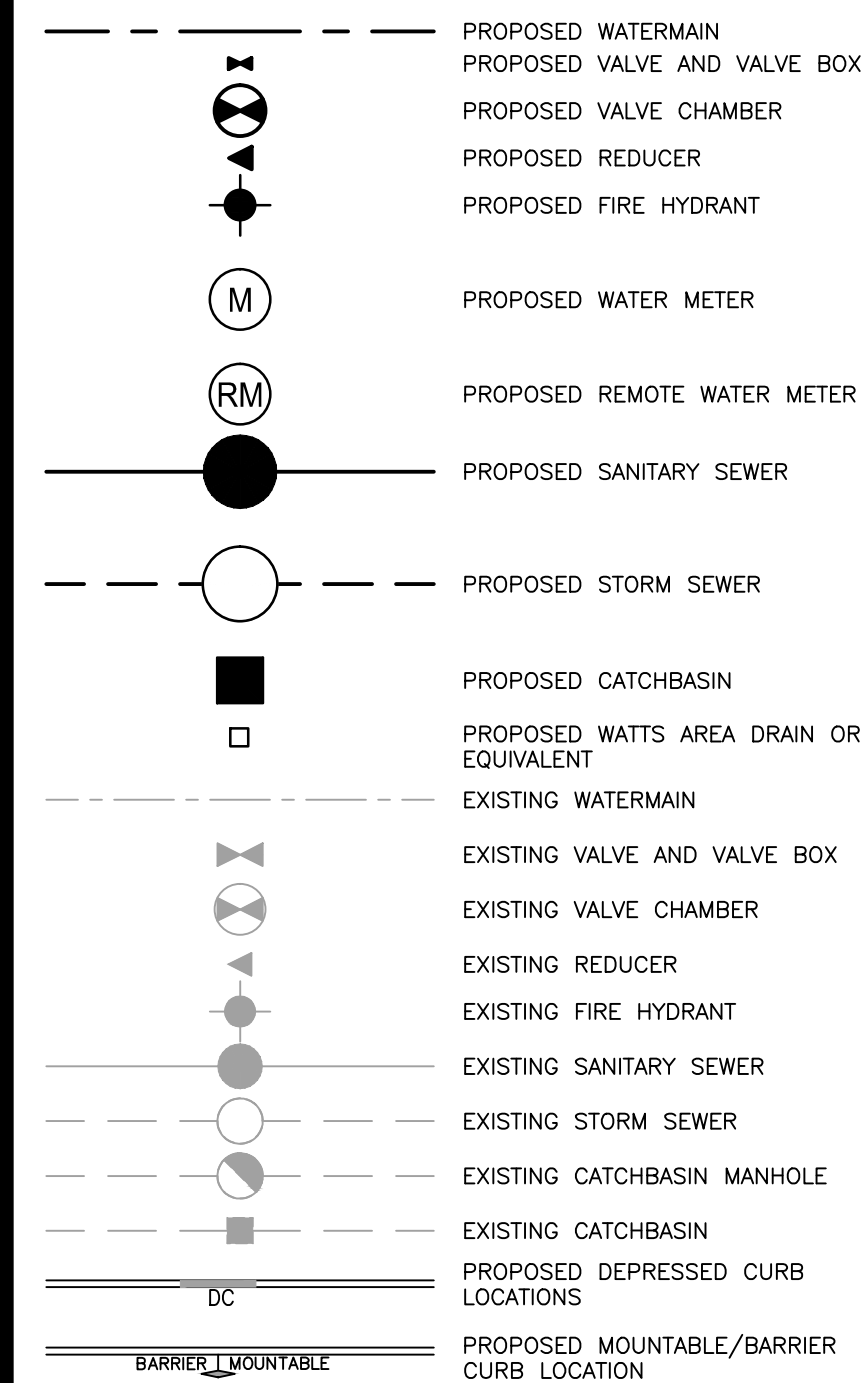


Legend



Notes

- PROPOSED BUILDING TO BE EQUIPPED WITH SUMP PUMP AND BACKWATER VALVE AT STORM CONNECTION TO CLARENCE STREET.
- MAXIMUM STORM RELEASE RATE AND UNDERGROUND CISTERN STORAGE REQUIREMENTS TO BE COORDINATED WITH MECHANICAL ENGINEER.
- AS RECOMMENDED IN THE GEOTECHNICAL INVESTIGATION, A TRENCH DRAIN SYSTEM IS TO BE INSTALLED AS A PRECAUTIONARY MEASURE, AROUND THE EXTERIOR PERIMETER WALLS AND BENEATH THE DEEPEST BASEMENT FLOOR SLAB. THE DRAIN SYSTEM SHOULD BE PROVIDED WITH SUFFICIENT CLEAN-OUTS TO PERMIT MAINTENANCE WHEN REQUIRED AND SHOULD ALSO BE CONNECTED TO A SUITABLE SUMP PIT(S) FOR MECHANICAL EVACUATION.
- UNDERGROUND PARKING DRAINAGE TO BE CONNECTED TO SANITARY SEWER SERVICE.

Revision	By	Appd.	YY.MM.DD
1	MJS	KJK	16.04.04
0	MJS	KJK	15.08.26

File Name: 160401149-D8.dwg MJS KJK MJS 15.02.10  
Dwn. Chkd. Dgn. YY.MM.DD

Permit-Seal

Client/Project  
CLAUDE LAUZON GROUP LTD.

275 KING EDWARD AVENUE

Ottawa, ON

Title

SITE SERVICING PLAN

Project No. 160401149	Scale 1:150	Sheet 1	Revision 1
--------------------------	----------------	------------	---------------

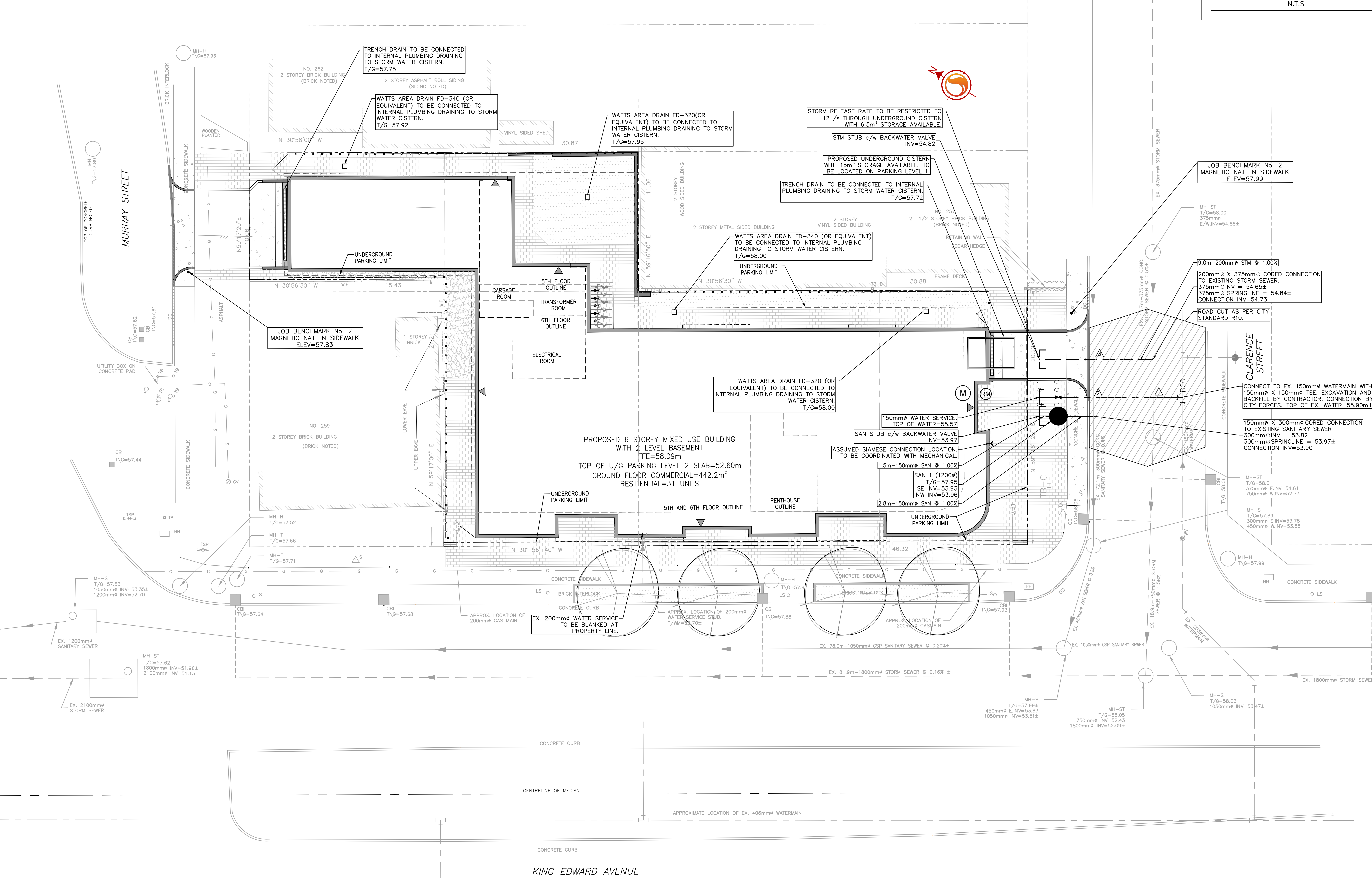
200mm Ø WATERMAIN 'A'			
STATION	FINISHED GRADE	TOP OF W/M	ITEM
0+000	58.00±	55.92±	150mm x 150mm TEE CONNECTION TO EXISTING WM
0+002.4	58.00±	55.80	WATER SERVICE CROSSING STORM
0+007.1	57.87±	55.470	WATER SERVICE CROSSING SANITARY
0+009.9	57.94	55.540	150mm VALVE AND BOX
0+011.4	57.97	55.570	CAP AND THRUST BLOCK

SEWER AND WATERMAIN CROSSING TABLE							
CROSSING	STM INV	STM OBV	SAN INV	SAN OBV	WTR TOP	WTR BTM	COMMENTS
▲	54.63(54.55)	55.01(55.09)			55.80	55.65	WATER SERVICE CROSSING STORM SEWER
▲			53.83(53.76)	54.13(54.20)	55.47	55.32	WATER SERVICE CROSSING SANITARY SEWER
▲	54.78	54.98	53.84(53.77)	54.14(54.21)			STORM SERVICE CROSSING SANITARY SEWER

▲ BRACKETS DENOTE ADJUSTED VALUE WITH CONCRETE PIPE THICKNESS  
● DEPTH OF WATER ASSUMED TO BE 2.1m ON CLARENCE AVENUE.

ROOF STORAGE CHARACTERISTICS				
AREA ID	AREA(ha)	HEAD (m)	Release (L/s)	Volume (m³)
BLDG 1	0.054	0.14	4.2	17.2
BLDG 2	0.015	0.13	2.0	3.7
BLDG 3	0.002	0.06	0.9	0.1
BLDG 4	0.009	0.11	1.8	1.6
BLDG 5	0.004	0.09	1.4	0.4

NOTE: STANDARD ZURN MODEL Z-105-5 CONTROL-FLO SINGLE NOTCH OF DRAINS OR APPROVED EQUIVALENT.



V:\01-00\active\160401149-Lauzon Group-King Edward design(drawing)\160401149-D8.dwg  
2016/04/04 10:37 AM By: Phao, Mike