

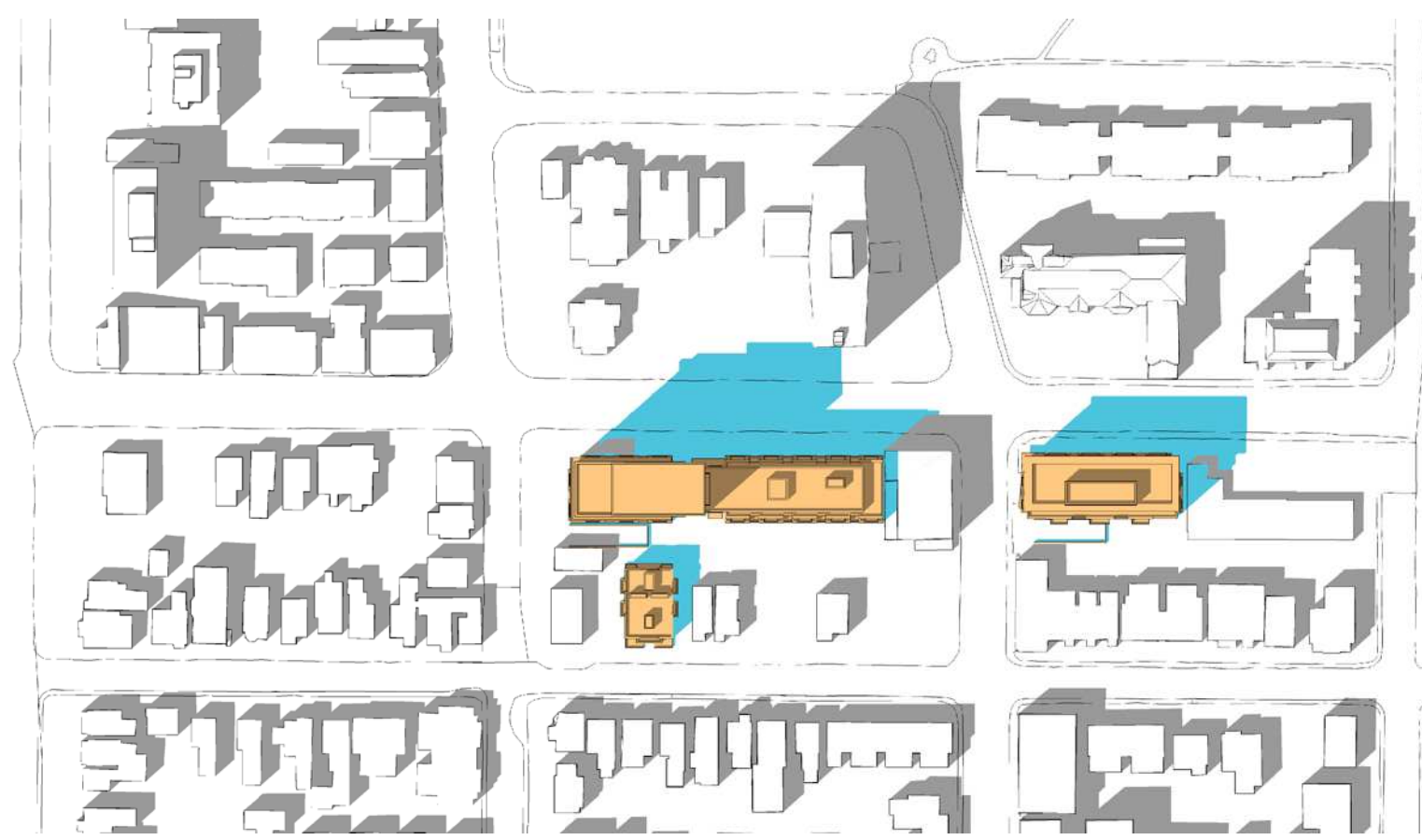
March 21st - 08:00 a.m.



March 21st - 10:00 a.m.



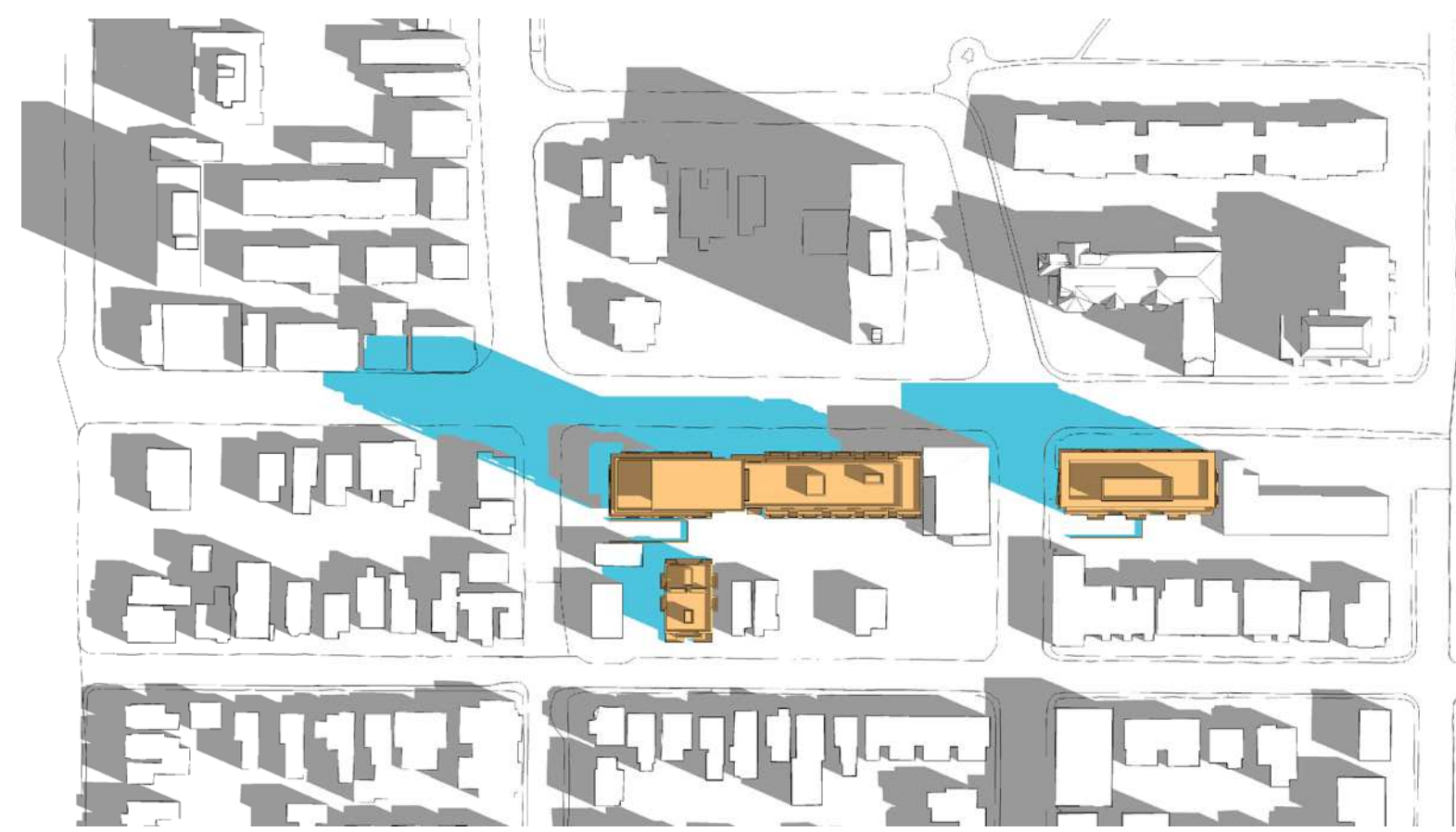
March 21st - 12:00 p.m.



March 21st - 02:00 p.m.



March 21st - 04:00 p.m.



June 21st - 08:00 a.m.



June 21st - 10:00 a.m.



June 21st - 12:00 p.m.



June 21st - 02:00 p.m.



June 21st - 04:00 p.m.

This drawing, as an instrument of service, is provided by and is the property of Graziani + Corazza Architects Inc. The contractor must verify and accept responsibility for all dimensions and conditions on site and must notify Graziani + Corazza Architects Inc. of any variations from the supplied information. Graziani + Corazza Architects Inc. is not responsible for the accuracy of survey, structural, mechanical, electrical, etc., engineering information shown on this drawing. Refer to the appropriate engineering drawings before proceeding with the work. Construction must conform to all applicable codes and requirements of the authorities having jurisdiction. Unless otherwise noted, no investigation has been undertaken or reported on by this office in regard to the environmental condition of this site. This drawing is not to be used for construction purposes until countersigned by the Architect.

This drawing is not to be scaled. All architectural symbols indicated on this drawing are graphic representations only.

01. APR.25.2016 ISSUED FOR SPA E.C.

issued for revisions



1320 Shawan Drive, Suite 100, Mississauga, Ontario L4W 1C3
Phone: 905.795.2601 Fax: 905.795.2844 www.gc-architects.com

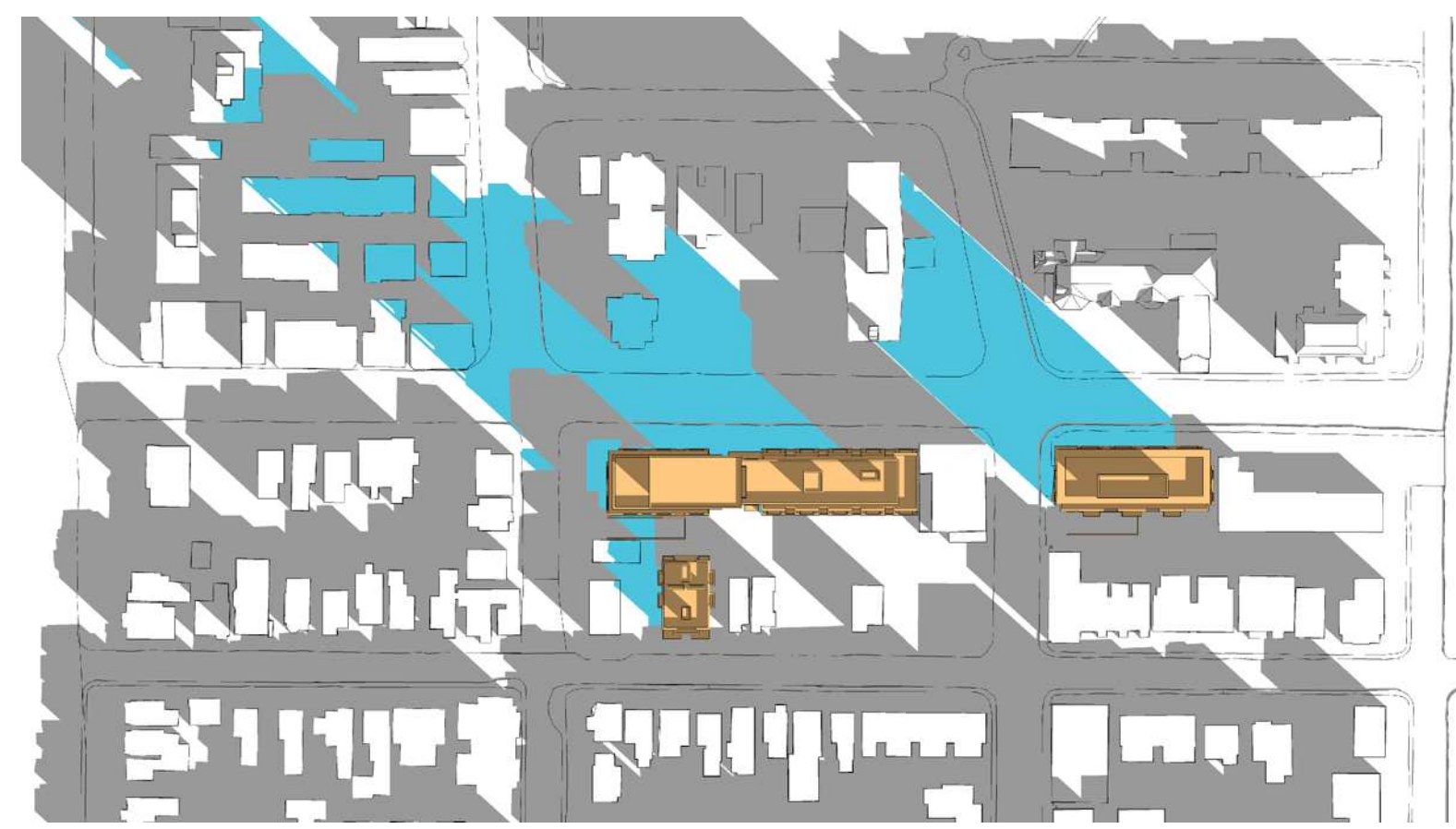
PROPOSED MIXED USE DEVELOPMENT
590 Rideau

OTTAWA **RICH CRAFT** GROUP OF COMPANIES ONTARIO
Project Architect: E. Corazza
Assistant Designer: L. Wong
Drawn By: L. Wong
Checked By: D. Biase
Plot Date: Apr 25, 2016
Job #: 1313.152

SHADOW STUDIES
MARCH & JUNE



TITLEBLOCK SIZE: 610 x 950



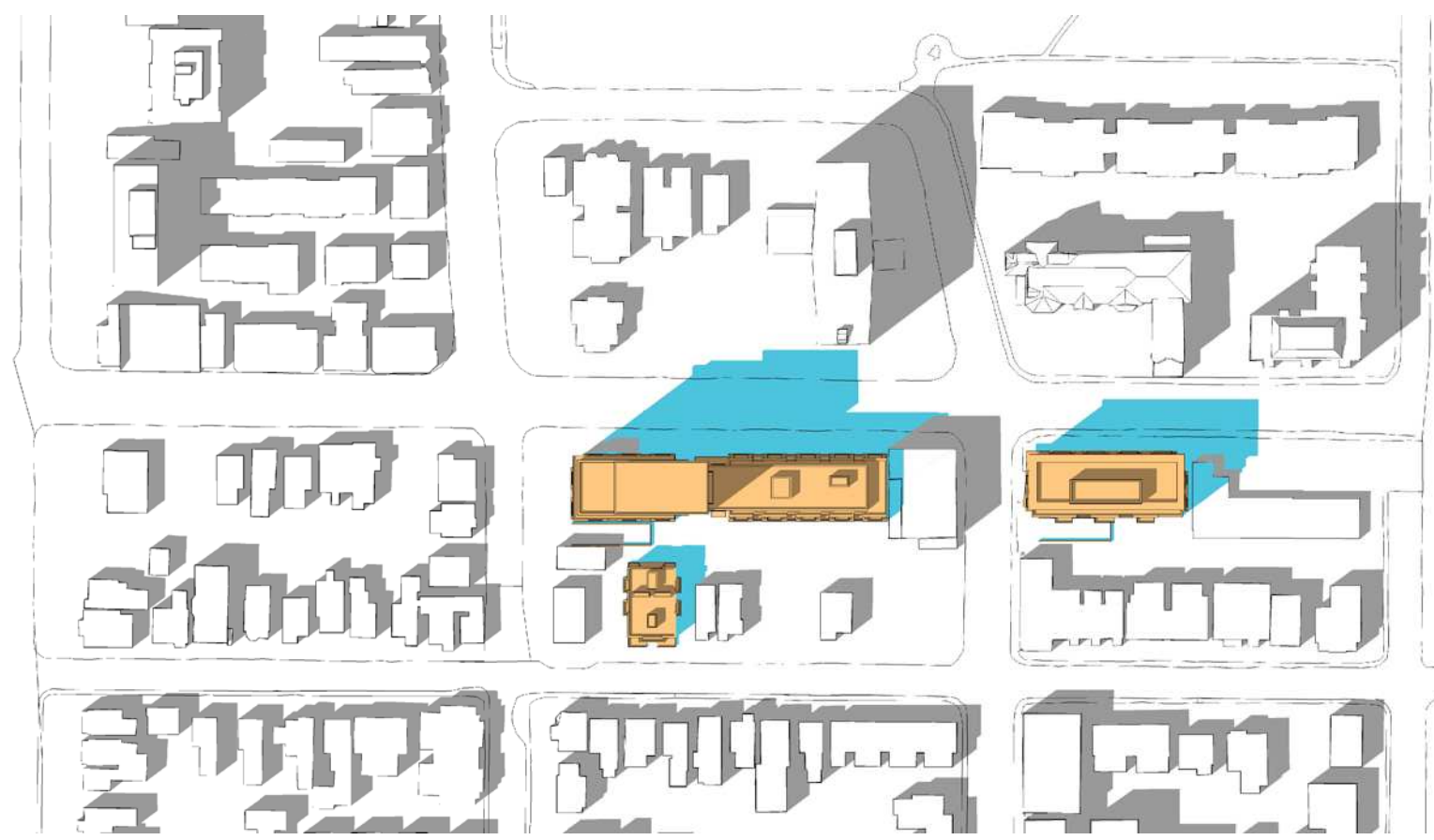
September 21st - 08:00 a.m.



September 21st - 10:00 a.m.



September 21st - 12:00 p.m.



September 21st - 02:00 p.m.



September 21st - 04:00 p.m.



December 21st - 08:00 a.m.



December 21st - 10:00 a.m.



December 21st - 12:00 p.m.



December 21st - 02:00 p.m.



December 21st - 04:00 p.m.

This drawing, as an instrument of service, is provided by and is the property of Graziani + Corazza Architects Inc. The contractor must verify and accept responsibility for all dimensions and conditions on site and must notify Graziani + Corazza Architects Inc. of any variations from the supplied information. Graziani + Corazza Architects Inc. is not responsible for the accuracy of surveys, structural, mechanical, electrical, etc., engineering information shown on this drawing. Refer to the appropriate engineering drawings before proceeding with the work. Construction must conform to all applicable codes and requirements of the authorities having jurisdiction. Unless otherwise noted, no investigation has been undertaken or reported on by this office in regard to the environmental condition of this site. This drawing is not to be used for construction purposes until countersigned by the Architect.

This drawing is not to be scaled. All architectural symbols indicated on this drawing are graphic representations only.

01. APR.25.2016 ISSUED FOR SPA E.C.

issued for revisions



1320 Shawan Drive, Suite 100, Mississauga, Ontario L4W 1C3
Phone: 905.795.2601 Fax: 905.795.2844 www.gc-architects.com

PROPOSED MIXED USE DEVELOPMENT
590 Rideau

OTTAWA RICHCRAFT GROUP OF COMPANIES ONTARIO

Project Architect: E. Corazza
Assistant Designer: L. Wong
Drawn By: L. Wong
Checked By: D. Biase
Plot Date: Apr 25, 2016
Job #: 1313.152

SHADOW STUDIES
SEPTEMBER & DECEMBER

N.T.S. A702

TITLEBLOCK SIZE: 610 x 950