

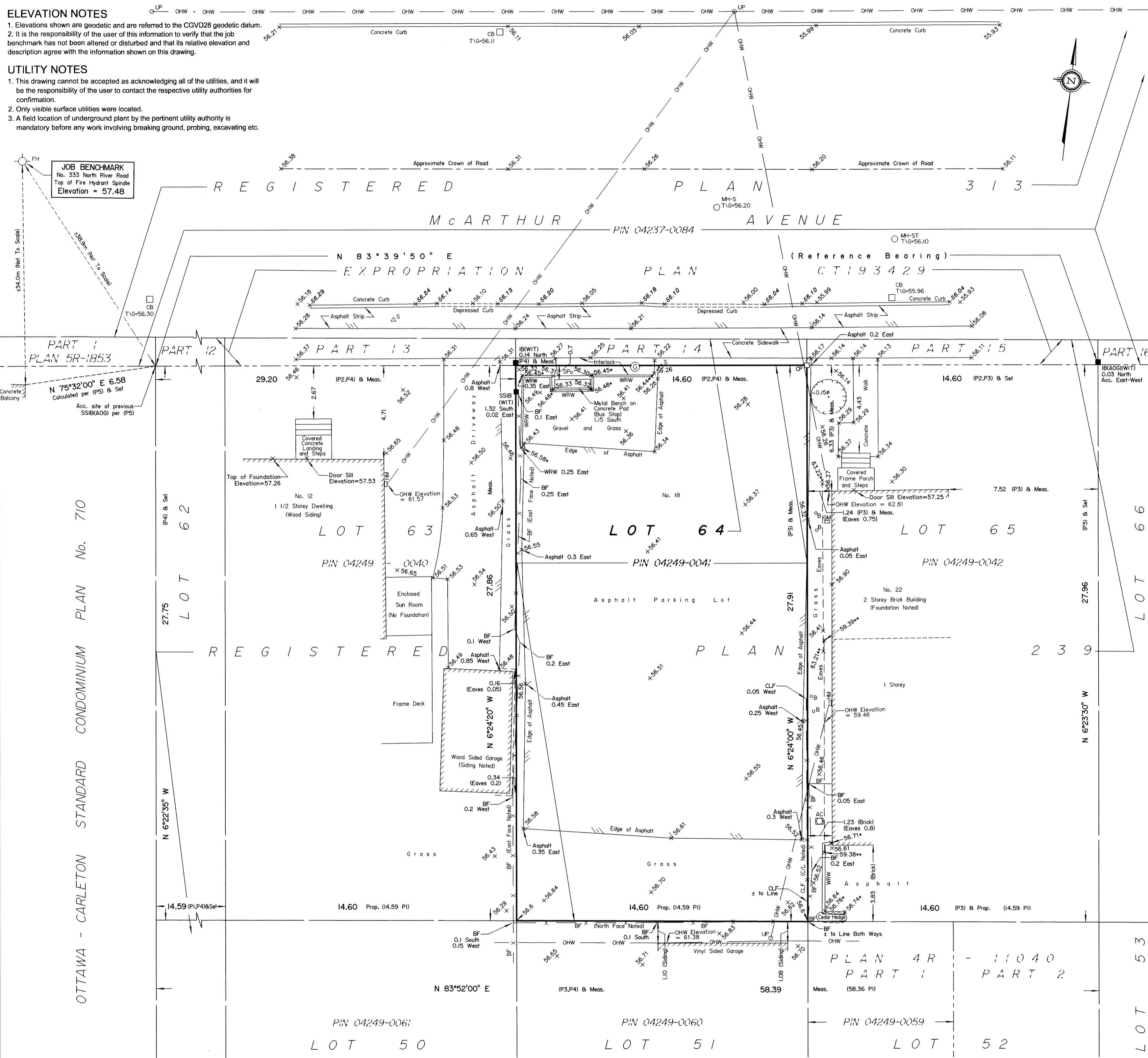
**ELEVATION NOTES**

- Elevations shown are geodetic and are referred to the CGVD28 geodetic datum.
- It is the responsibility of the user of this information to verify that the job benchmark has not been altered or disturbed and that its relative elevation and description agree with the information shown on this drawing.

**UTILITY NOTES**

- This drawing cannot be accepted as acknowledging all of the utilities, and it will be the responsibility of the user to contact the respective utility authorities for confirmation.
- Only visible surface utilities were located.
- A field location of underground plant by the pertinent utility authority is mandatory before any work involving breaking ground, probing, excavating etc.

**JOB BENCHMARK**  
No. 333 North River Road  
Top of Fire Hydrant Spindle  
Elevation = 57.48



**SURVEYOR'S REAL PROPERTY REPORT**

**PART 1** Plan of  
**PART OF LOT 64**  
**REGISTERED PLAN 239**  
**CITY OF OTTAWA**

Surveyed by Annis, O'Sullivan, Vollebakk Ltd.

Scale 1 : 125  
5.0 3.75 2.5 1.25 0 2.5 5 Metres

**Metric**  
DISTANCES SHOWN ON THIS PLAN ARE IN METRES AND CAN BE CONVERTED TO FEET BY DIVIDING BY 0.3048.

**Surveyor's Certificate**

- I CERTIFY THAT:
- This survey and plan are correct and in accordance with the Surveys Act, the Surveyors Act and the Land Titles Act and the regulations made under them.
  - The survey was completed on the 5th day of September, 2014.

Sept 5, 2014 Date  
Andrew J. Broxham  
Ontario Land Surveyor

**PART 2**  
THIS PLAN MUST BE READ IN CONJUNCTION WITH SURVEY REPORT DATED: September 5, 2014

ANNIS, O'SULLIVAN, VOLLEBEKK LTD. grants to Takyan Consulting ("The Client"), their solicitors, mortgagees, and other related parties, permission to use original, signed, sealed copies of the Surveyor's Real Property Report in transactions involving The Client.

**Notes & Legend**

- |           |   |                         |
|-----------|---|-------------------------|
| □         | Denotes   | Survey Monument Planted |
| ■         | Survey Monument Found                             |                         |
| SIB       | Standard Iron Bar                                 |                         |
| SSIB      | Short Standard Iron Bar                           |                         |
| IB        | Iron Bar  |                         |
| CP        | Concrete Pin                                      |                         |
| Prop.     | Proportioned                                      |                         |
| Acc.      | Accepted  |                         |
| (WIT)     | Witness   |                         |
| Meas.     | Measured  |                         |
| (AOG)     | Annis, O'Sullivan, Vollebakk Ltd.                 |                         |
| (P1)      | Registered Plan 239                               |                         |
| (P2)      | Plan 5R-423                                       |                         |
| (P3)      | (AOG) Plan September 3, 1999                      |                         |
| (P4)      | (1319) Plan August 18, 1989                       |                         |
| (P5)      | Ottawa-Carleton Standard Condominium Plan No. 710 |                         |
| ○ MH-ST   | Maintenance Hole (Storm Sewer)                    |                         |
| ○ MH-S    | Maintenance Hole (Sanitary)                       |                         |
| — OHW     | Overhead Wires                                    |                         |
| ○ UP      | Utility Pole                                      |                         |
| □ CB      | Catch Basin                                       |                         |
| ○ FH      | Fire Hydrant                                      |                         |
| □ HM      | Hydro Meter                                       |                         |
| ○ SP      | Water Stand Post                                  |                         |
| TVG       | Top of Grate                                      |                         |
| □ GM      | Gas Meter   |                         |
| ○ B       | Bollard   |                         |
| △ S       | Sign  |                         |
| CLF       | Chain Link Fence                                  |                         |
| BF        | Board Fence                                       |                         |
| WRW       | Wooden Retaining Wall                             |                         |
| □ AC      | Air Conditioner                                   |                         |
| ∅         | Diameter  |                         |
| + 65.00   | Location of Elevations                            |                         |
| + 66.00   | Top of Concrete Curb Elevation                    |                         |
| + 65.00*  | Top of Retaining Wall Elevation                   |                         |
| + 65.00** | Underside of Eaves Elevation                      |                         |
| C/L       | Centreline  |                         |
| ⊙         | Refuse Container                                  |                         |
| ⊙         | Deciduous Tree                                    |                         |

ASSOCIATION OF ONTARIO LAND SURVEYORS  
PLAN SUBMISSION FORM  
1911540

THIS PLAN IS NOT VALID UNLESS IT IS AN EMBOSSED ORIGINAL COPY ISSUED BY THE SURVEYOR In accordance with Regulation 1026, Section 29 (3).

Bearings are astronomic, derived from the southerly limit of McArthur Avenue (as widened), shown to be N 83°39'50" E on Plan 5R-423.

© Annis, O'Sullivan, Vollebakk Ltd., 2014. THIS PLAN IS PROTECTED BY COPYRIGHT

**ANNIS, O'SULLIVAN, VOLLEBEKK LTD.**  
14 Concourse Gate, Suite 500  
Nepean, Ont. K2E 7S6  
Phone: (613) 727-0850 / Fax: (613) 727-1079  
Email: Nepean@aovltd.com

Ontario Land Surveyors  
Job No. 15037-14 Takyan Consulting L164 RP239 O.F. JG