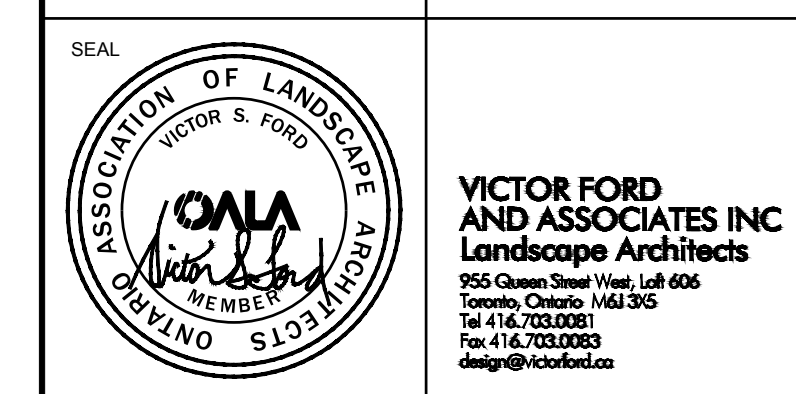
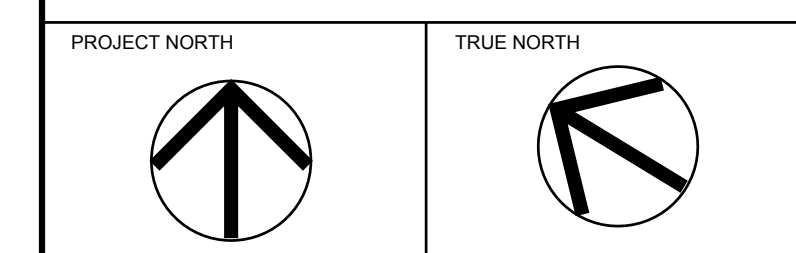
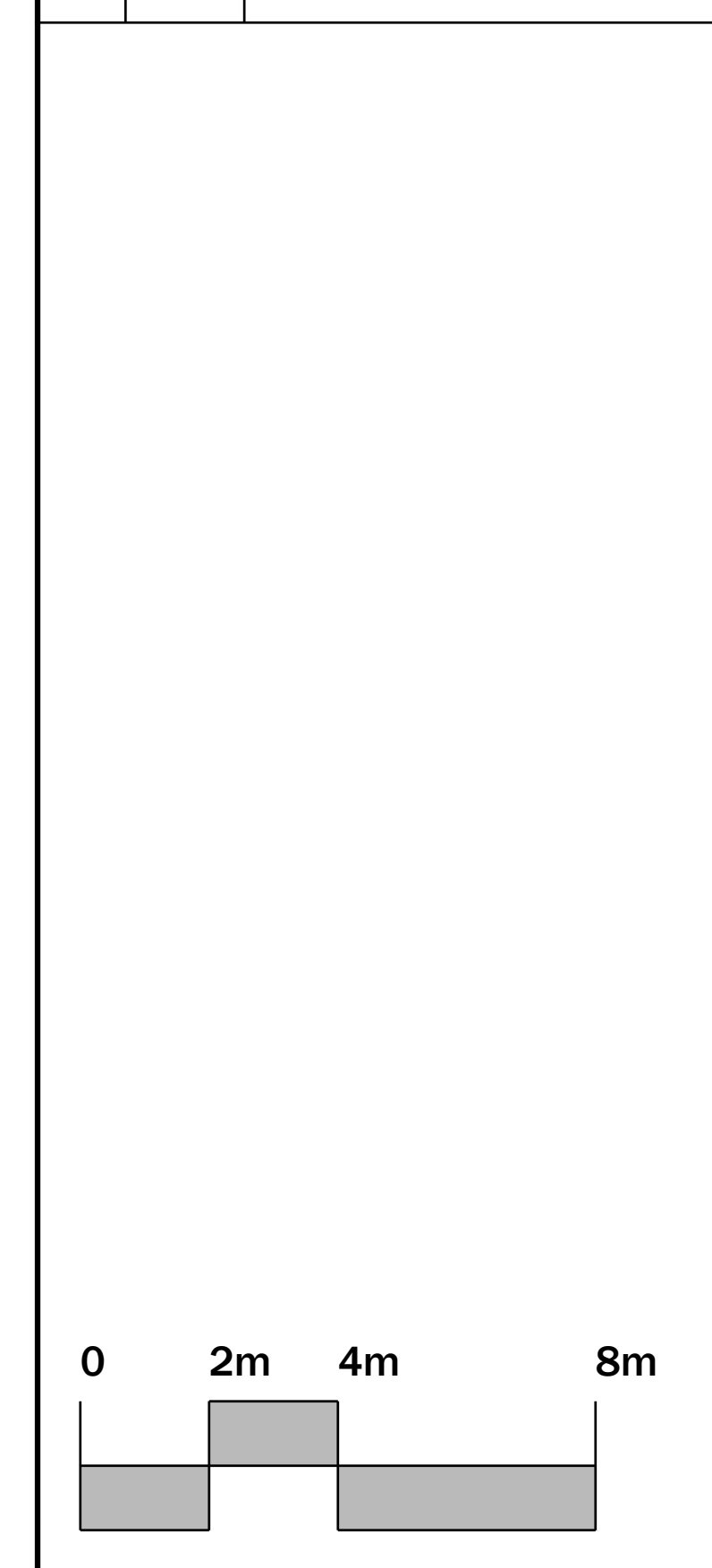


DRAWINGS ARE NOT TO BE SCALED.
CONTRACTOR TO CHECK AND VERIFY ALL DIMENSIONS AND CONDITIONS ON THE JOB AND REPORT ANY DISCREPANCIES TO THE ARCHITECT BEFORE PROCEEDING WITH THE WORK.
ALL RIGHTS RESERVED. THE USE OF ANY PART OF THIS DRAWING REPRODUCED, TRANSMITTED IN ANY FORM OR BY ANY MEANS WITHOUT THE PRIOR CONSENT OF THE ARCHITECT IS AN INFRINGEMENT IS STRICTLY PROHIBITED.



ISSUE		
NO.	DATE	DESCRIPTION
1	17 Feb, 2017	Preliminary for Review
2	31 Mar, 2017	Issued for SPA



CLIENT:
Uganda High Commission
350 Sparks Street, Suite 1210
Ottawa, Ontario. K1R 7S8

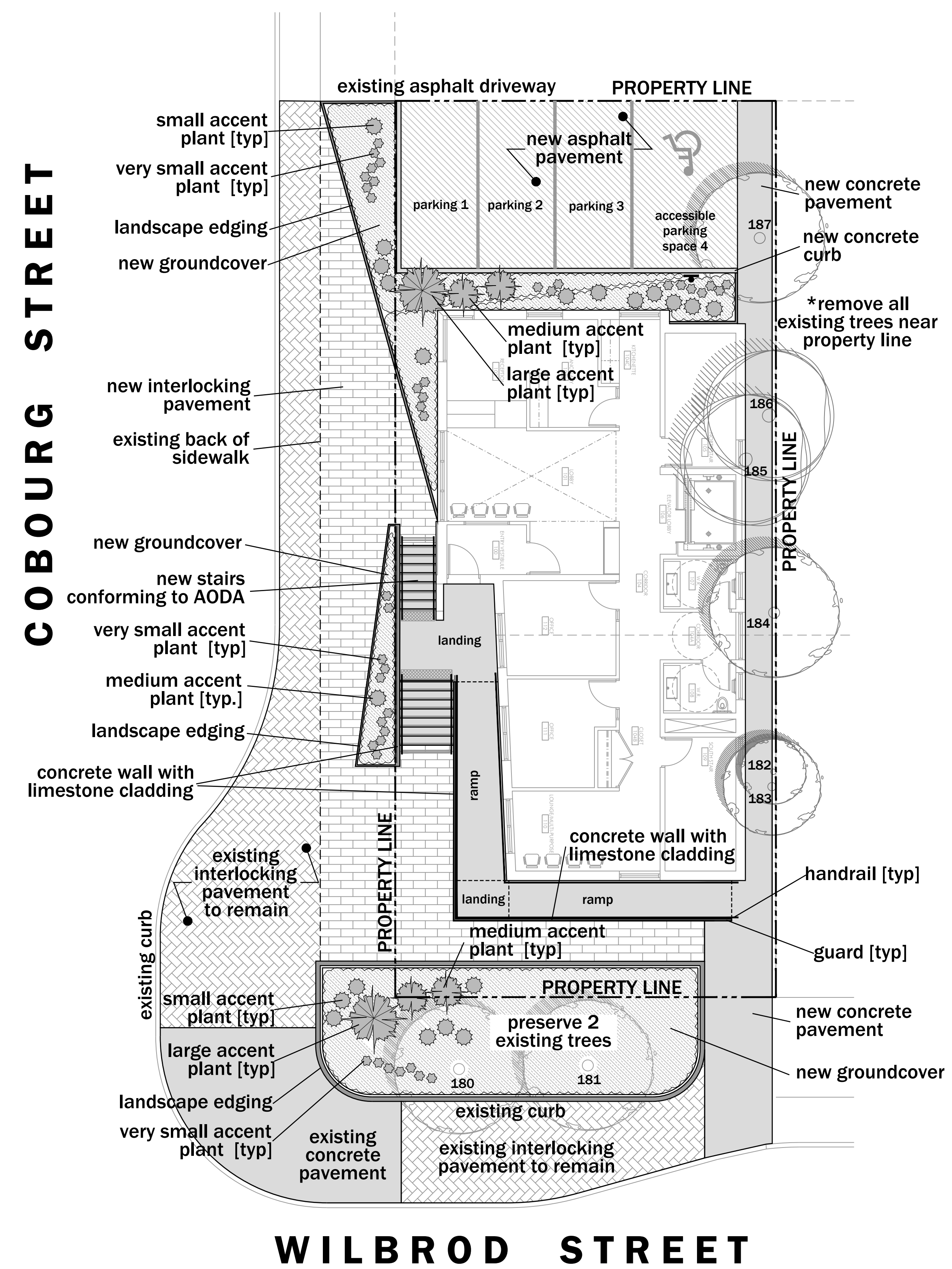


PROJECT:
New Chancery Building
231 Cobourg Street, Ottawa, Ontario. K1N 8J2

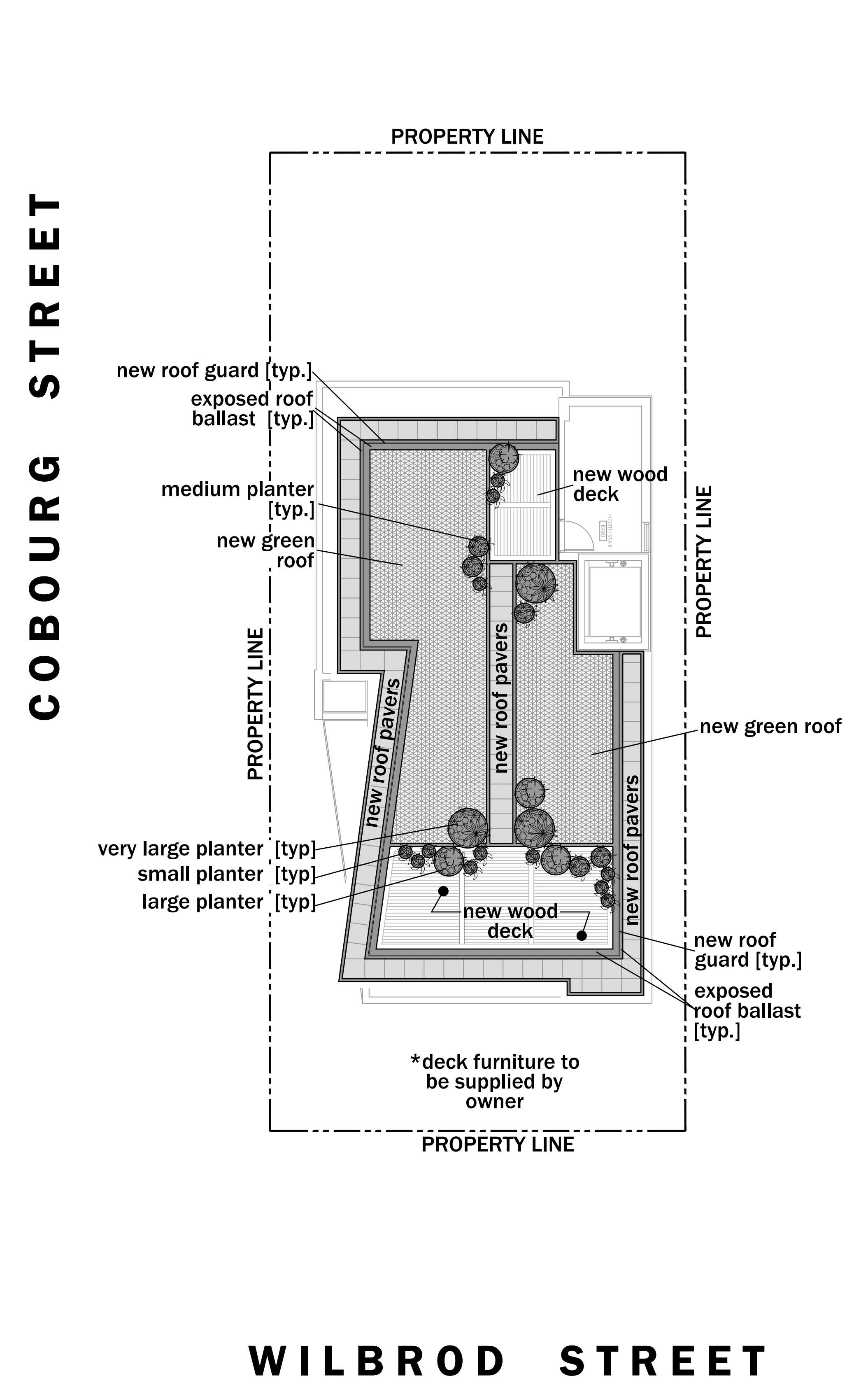
PROJECT NO.: A14014 VFA PROJECT NO.: 1645

DRAWING TITLE:
Landscape Plan

SCALE: 1:100 DATE: February 2017 SHEET NO.: L-1
DRAWN BY: [vfa] REVIEWED BY: [vfa]



GROUND FLOOR LANDSCAPE PLAN SCALE = 1:100



GREEN ROOF LANDSCAPE PLAN SCALE = 1:100

Landscape Notes:

1. PROPOSED PLANT MATERIAL

Abbrev	Botanical Name	Common Name	Hardiness	Exposure	Form	Landscape Characteristics	Notes
Groundcovers:							
Atv	<i>Ajuga tenorii 'vaifredda'</i>	Chocolate Chip Bugleweed	zone 4	full sun to full shade	prostrate mat	dark-green to purple coarse foliage, small blue flowers	may be sold as an Ajuga reptans variety
Efc	<i>Euonymus fortunei 'coloratus'</i>	Purple-leaf Wintercreeper	zone 4	full sun to full shade	spreading/climbing	emerald to dark green, medium-texture	
Accent Plants:							
Pvx	<i>Philadelphus x vignalus</i>	Mock Orange	zone 3	full sun to partial shade	2 metre height, fountain-shaped	fragrant white double flowers, medium-texture emerald green leaves	large accent
Hai	<i>Hydrangea arborescens 'abetwo'</i>	'Incrediball' Hydrangea	zone 3	full sun to partial shade	1.5 metre height, mounding form	large white flowers, medium-texture emerald green leaves	large accent
Msd	<i>Miscanthus sinensis 'dixieland'</i>	Dixieland Fountain Grass	zone 5	full sun	1.2 metre height, densely tufted	green leaves with white stripes, turns to tan after frost, flowers mature to silver plumes	medium accent, consider hardier alternates
Msm	<i>Miscanthus sinensis 'morning light'</i>	Morning Light Fountain Grass	zone 5	full sun	1 metre height, upright, arching leaves	fine-textures variegation giving grey-green effect	medium accent, consider hardier alternates
Pdn	<i>Paeonia 'duchesse de nemours'</i>	'Duchesse de Nemours' Peony	zone 3	full sun to partial shade	1 metre height	large white flowers with ruffled central petals	medium accent, consider hardier alternates
Yg	<i>Yucca glauca</i>	Spanish bayonet	zone 3	full sun	80 cm height and width	spiky silver-grey leaves, tall panicles of creamy-white flowers	small accent
Fa	<i>Festuca amethystina</i>	Tufted Fescue	zone 4	full sun	50 cm tufted clump	evergreen, slender blue-ish leaves, flowers on spikelets vary in colour	small accent
Fgb	<i>Festuca glauca 'blaufuchs'</i>	'Blue Fox' Fescue	zone 4	full sun to partial shade	dwarf, 25cm tufted clump	evergreen, slender blue-ish leaves, flowers on spikelets vary in colour	very small accent
Bulbs:							
Igc	<i>Iris germanica 'crowned heads'</i>	'Crowned Heads' Bearded Iris	zone 3	full sun	60 cm tall	blue flower, green-blue foliage	plant individuals or small, odd-numbered groups within groups of daffodils and tulips
Igi	<i>Iris germanica 'immortality'</i>	'Immortality' Bearded Iris	zone 3	full sun	60 cm tall	white flower, green-blue foliage	plant individuals or small, odd-numbered groups within groups of daffodils and tulips
Nmh	<i>Narcissus 'breck's colossal'</i>	'Breck's Colossal' Daffodil	zone 3	full sun to partial shade	50 cm tall	large yellow flowers	plant in large groupings
Tsg	<i>Tulipa sun gold jumbo'</i>	Sun Gold Jumbo' Tulip	zone 3	full sun to partial shade	60 cm tall	large yellow flowers	plant in large groupings
Planters (roof):							
Pvx	<i>Philadelphus x vignalus 'snowbelle'</i>	'Snowbelle' Mock Orange	zone 4	full sun to partial shade	semi-dwarf cultivar, 1.5 metre height, upright mounding	fragrant white semi-double flowers, medium-fine texture green leaves	Permanent anchor plant for extra-large planters
Hai	<i>Hydrangea arborescens 'abetwo'</i>	'Incrediball' Hydrangea	zone 3	full sun to partial shade	1.5 metre height, mounding form	large white flowers, medium-texture emerald green leaves	Permanent anchor plant for extra-large planters
Cif	<i>Cortaderia seloana 'ivory feathers'</i>	'Ivory Feathers' Pampas grass	n/a	full sun	2 metres tall	large white fluffy plumes	Annual anchor plant for large planters
Cig	<i>Canna...</i>	Select Canna Lily cultivars from the 'Italian group'	n/a	full sun	varies	varies	Annual anchor plant for large planters
Annual anchor plant for medium planters						select and submit seasonal, coordinated blends of annual plants such as: <i>Nicotiana, Phormium (new zealand flax), Rosmarinus (rosemary), Trachelospermum (star jasmine)</i>	
Medium and small annuals for filling out pots:						select and submit seasonal, coordinated blends of annual plants such as: <i>Alyssum, Artemisia (ie Dusky-Miller), Bacopa, Geranium, Pelargonium, Salvia, Solanum (potato vine), Tagetes (marigold), etc.</i>	
Green Roof System							
Green roof						Complete 'extensive green roof' system featuring a continuous cover of pre-grown sedum, perennial, and grass plants selected for suitability to local conditions	

2. EXISTING TREES

Tree	Species	DBH (cm)	Condition	Category	Comments	Suitability for Conservation	Recommendation	CRZ (M)
180	<i>Acer platanoides</i>	37	Fair	4	- deadwood - encroached upon by <2%	Good	Preserve	3.7
181	<i>Acer platanoides</i>	33	Fair	4	- deadwood, storm break - clear of proposed construction - shall retain its existing root structure	Moderate	Preserve	3.3
182	<i>Ulmus americana</i>	26	Fair	1	- deadwood - heavily encroached upon by proposed construction	Moderate	Remove	2.6
183	<i>Ulmus americana</i>	15	Poor	1	- deadwood, in decline, low LCR - heavily encroached upon by proposed construction	Poor	Remove	1.5
184	<i>Ulmus americana</i>	44	Poor	1	- deadwood, in decline, 70% dead - heavily encroached upon by proposed construction	Poor	Remove	4.4
185	<i>Thuja occidentalis</i>	30	Fair	1	- deadwood - in conflict with proposed construction	Moderate	Remove	3.0
186	<i>Thuja occidentalis</i>	33	Fair	1	- deadwood - in conflict with proposed construction	Moderate	Remove	3.3
187	<i>Ulmus americana</i>	57	Fair	1	- deadwood, poor union, storm break - heavily encroached upon by proposed construction	Moderate	Remove	5.7
C1	<i>Acer platanoides</i>	33	Fair	4	- deadwood, in decline, decay evident - clear of proposed construction - shall retain its prescribed CRZ	Moderate	Preserve	3.3

Refer to Arborist Report and Tree Preservation Plan completed by The Tree Specialists Inc. on February 15, 2017

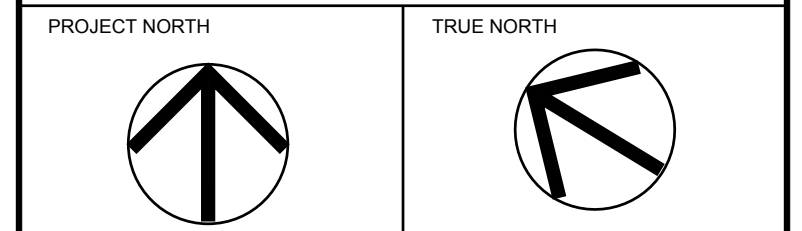
3. FURNISHINGS

- Deck furniture to be supplied by owner
- Planting pots: modern design in dark grey-colour; three sizes (extra large, large, medium), each size to be provided in a range of 2 to 3 proportions/heights; lightweight materials
- Guards (ramp and stair): clear glass with discreet, stainless steel hardware; conforming to OBC and AODA where applicable
- Guards (roof): clear glass with discreet, stainless steel hardware; conforming to OBC and AODA where applicable; provide gates where required
- Handrails: stainless steel, wall-mounting, conforming to OBC and AODA
- Planter edging: shall be cast-in-place concrete where adjacent to parking spaces; shall be dark-coloured stone or pre-cast concrete pavers placed on-end to create a 150mm tall barrier between 50 and 75mm thick with tight butt joints; at least two-thirds of the units shall be buried
- Landscape lighting: tbd

4. SURFACES

- Cobourg Street frontage and area between accessible ramp and preserved trees: pre-cast concrete pavers in herringbone pattern to match existing (ie Unilock Hollandstone in 'rustic red' colour)
- Walkways, ramps, stairs and landings: natural grey concrete with broom or sandblast non-slip finish
- Stair and ramp accessibility features: stair nosings, tactile surfaces, etc. to conform to AODA using stainless steel or dark-grey coloured materials
- Parking spaces: asphalt
- Planting areas: all new planting areas shall be provided 50mm of shredded hardwood mulch dyed black over 450mm depth of new, high-quality planting soil; within tree protection areas, the surface shall be top-dressed to depth allowed by arborist and covered in noted mulch
- Decking (roof): Eastern white Cedar, "select patio" grade, untreated
- Pavers (roof): Large-sized, light-coloured stone or pre-cast concrete pavers complete with pedestal system intended for rooftop pedestrian use
- Roof ballast: where exposed, roof ballast materials shall be an ornamental, black, granite pea gravel of approximate 10 to 20mm size and containing no fines; where not exposed, roof ballast shall be as determined by the structural engineer

DRAWINGS ARE NOT TO BE SCALED.
CONTRACTOR TO CHECK AND VERIFY ALL DIMENSIONS AND CONDITIONS ON THE JOB AND REPORT ANY DISCREPANCIES TO THE ARCHITECT BEFORE PROCEEDING WITH THE WORK.
ALL RIGHTS RESERVED. THE USE OF ANY PART OF THIS DRAWING REPRODUCED, TRANSMITTED IN ANY FORM OR BY ANY MEANS WITHOUT THE PRIOR CONSENT OF THE ARCHITECT IS AN INFRINGEMENT IS STRICTLY PROHIBITED.



ISSUE		
NO.	DATE	DESCRIPTION
1	17 Feb. 2017	Preliminary for Review
2	31 Mar. 2017	Issued for SPA

CLIENT:
Uganda High Commission
350 Sparks Street, Suite 1210
Ottawa, Ontario. K1R 7S8



PROJECT:
New Chancery Building
231 Cobourg Street, Ottawa, Ontario. K1N 8J2

PROJECT NO.: A14014
VFA PROJECT NO.: 1645

DRAWING TITLE:
Landscape Notes

SCALE:
DRAWN BY: [VFB]

DATE:
February 2017

REVIEWED BY:

SHEET NO.:
L-2