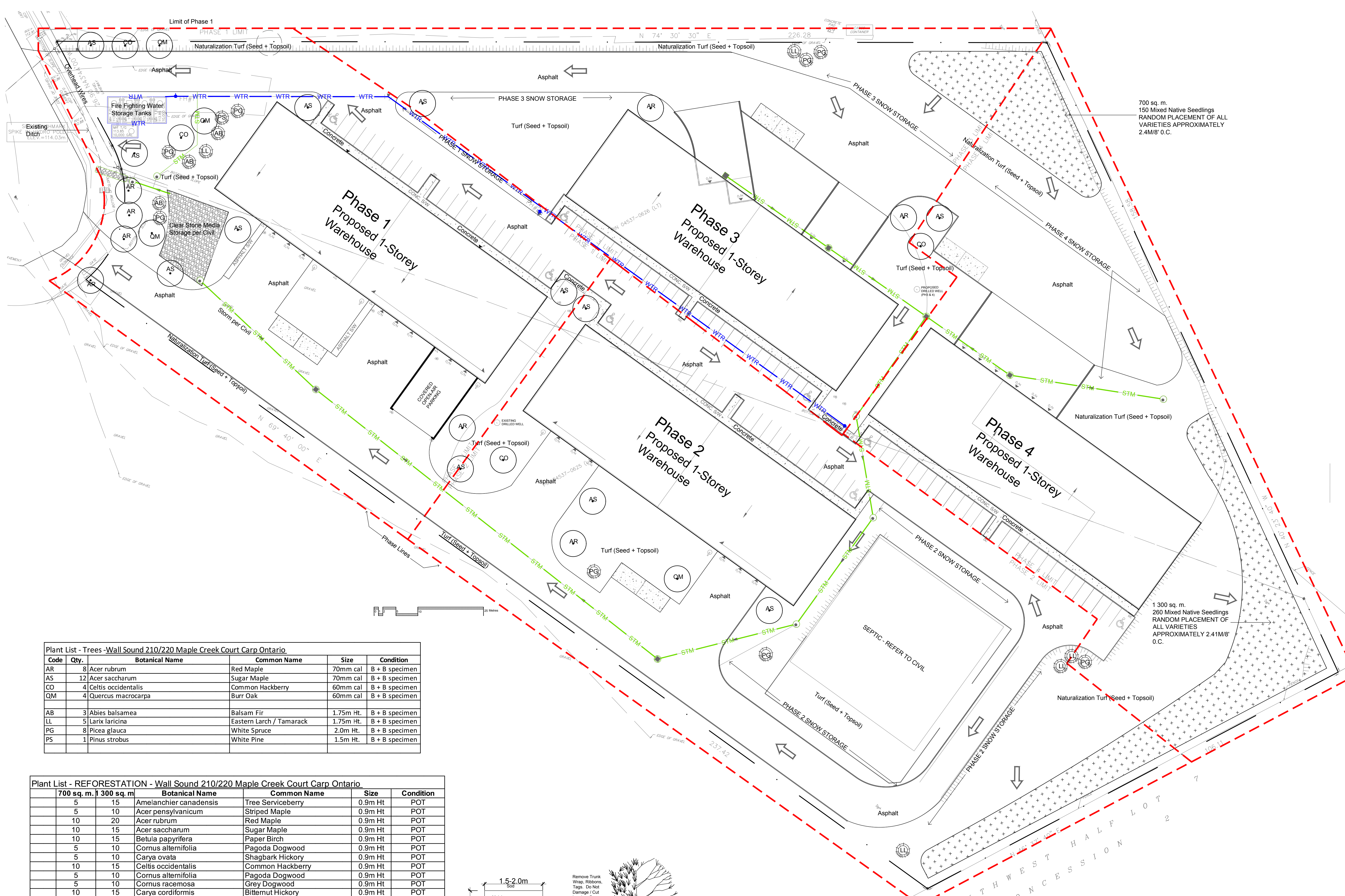


Drawing Remains the Property of/Copyright Reserved by Gino J. Aiello Landscape Architect. Do Not Use or Reproduce Without Approval of Gino J. Aiello.
NOT To Be Used For Construction Unless indicated by Revision: **"FOR LANDSCAPE CONSTRUCTION"**.
Contractor is Responsible for Verification of Site Locations of all Utilities. Report any Discrepancies Between Site and Drawing Immediately to Gino J. Aiello. Do NOT Proceed Until Clarified.
 URF AREAS TO BE SEED C/W 150MM DEPTH TOPSOIL ON APPROVED SUBGRADE. Fine Fescue/Kentucky Bluegrass Seed. PROVIDE ONE SOD STRIP AT CURB/ASPHALT/CONCRETE EDGES.
 NATURALIZATION TURF AREAS TO BE SEED C/W 150MM DEPTH TOPSOIL ON APPROVED SUBGRADE.
 - Naturalization Seed Mix - Sideoats Grama, Switch Grass, Little Bluestem, Big Bluestem, Canada Wild Ryegrass. | PLANTING MIX TO BE APPROVED BY LANDSCAPE ARCHITECT PRIOR TO PLANTING | ALL MATERIALS & WORK TO BE MAINTAINED UNTIL FINAL ACCEPTANCE, (MOWING TURF, WEEDING BEDS, WATERING TURF & PLANTS) & INCLUDE 1 YEAR WARRANTY FROM DATE OF FINAL ACCEPTANCE | PROVIDE WATERING OF ALL PLANT MATERIAL AS REQUIRED FOR PROPER ESTABLISHMENT, UNTIL END OF WARRANTY PERIOD | REFER TO CIVIL ENGINEER'S DRAWING FOR ELEVATIONS / GRADING |
 The Landscape Plan is to be read in conjunction with the grading, servicing, site and survey plan | Bare root material to be planted in season only | All plant material locations to be staked on site by the landscape contractor and checked by the landscape architect prior to planting | All trees to be preserved on or directly adjacent to the site will be protected | Plant material are to be installed a minimum of; 3.0m away from any part of any hydro transformer, 3.0m corridor between a fire hydrant and the curb, a 2.5m radius beside or behind a fire hydrant, 2.0m from any servicing/utility line or structure |



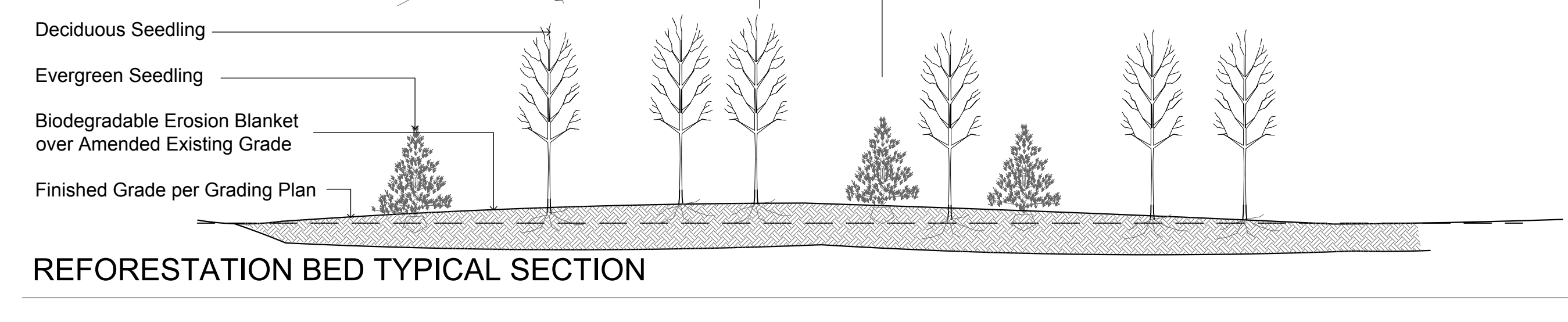
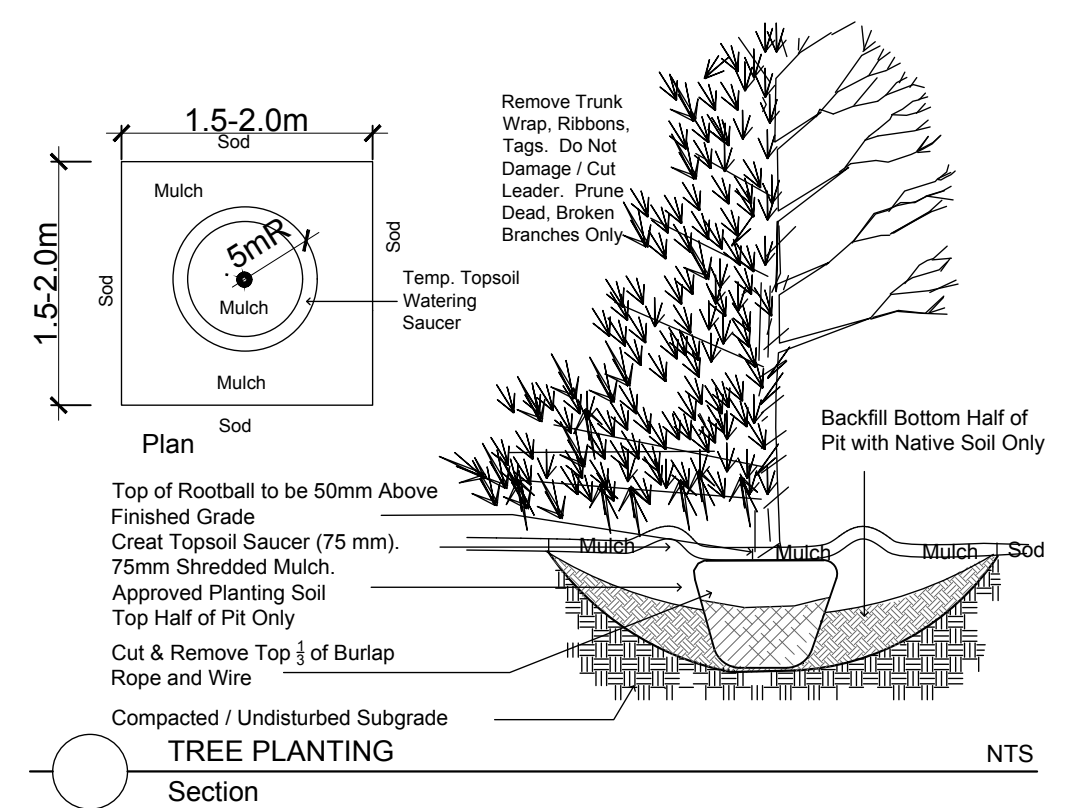
- Existing Tree to Remain
- Proposed NATIVE Deciduous Tree
- Proposed NATIVE Coniferous Tree
- Proposed NATIVE Reforestation
- WTR Below Grade Servicing per Civil
- STM Below Grade Servicing per Civil
- SAN Below Grade Servicing per Civil
- Overhead Wires

Plant List - Trees -Wall Sound 210/220 Maple Creek Court Carp Ontario

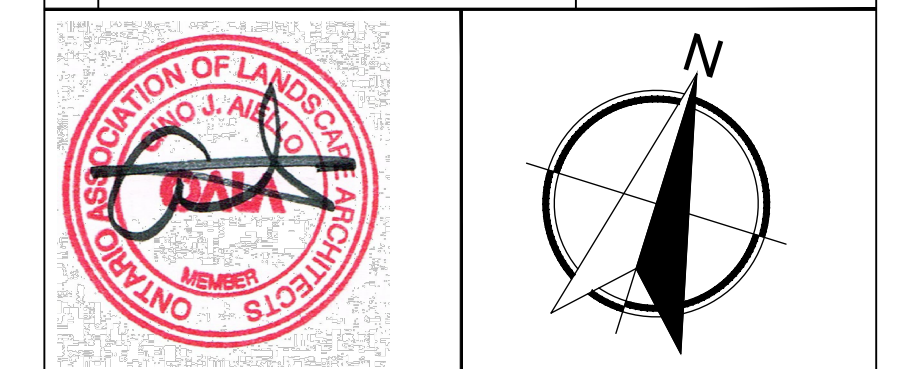
Code	Qty.	Botanical Name	Common Name	Size	Condition
AR	8	Acer rubrum	Red Maple	70mm cal	B + B specimen
AS	12	Acer saccharum	Sugar Maple	70mm cal	B + B specimen
CO	4	Celtis occidentalis	Common Hackberry	60mm cal	B + B specimen
QM	4	Quercus macrocarpa	Burr Oak	60mm cal	B + B specimen
AB	3	Abies balsamea	Balsam Fir	1.75m Ht.	B + B specimen
LL	5	Larix laricina	Eastern Larch / Tamarack	1.75m Ht.	B + B specimen
PG	8	Picea glauca	White Spruce	2.0m Ht.	B + B specimen
PS	1	Pinus strobus	White Pine	1.5m Ht.	B + B specimen

Plant List - REFORESTATION - Wall Sound 210/220 Maple Creek Court Carp Ontario

700 sq. m.	1 300 sq. m.	Botanical Name	Common Name	Size	Condition
5	15	Amelanchier canadensis	Tree Serviceberry	0.9m Ht	POT
5	10	Acer pensylvanicum	Striped Maple	0.9m Ht	POT
10	20	Acer rubrum	Red Maple	0.9m Ht	POT
10	15	Acer saccharum	Sugar Maple	0.9m Ht	POT
10	15	Betula papyrifera	Paper Birch	0.9m Ht	POT
5	10	Cornus alternifolia	Pagoda Dogwood	0.9m Ht	POT
5	10	Carya ovata	Shagbark Hickory	0.9m Ht	POT
10	15	Celtis occidentalis	Common Hackberry	0.9m Ht	POT
5	10	Cornus alternifolia	Pagoda Dogwood	0.9m Ht	POT
5	10	Cornus racemosa	Grey Dogwood	0.9m Ht	POT
10	15	Carya cordiformis	Bitternut Hickory	0.9m Ht	POT
5	10	Juglans nigra	Black Walnut	0.9m Ht	POT
5	10	Ostrya virginiana	Hophornbeam Ironwood	0.9m Ht	POT
5	15	Prunus pensylvanica	Pin Cherry	0.9m Ht	POT
10	15	Quercus macrocarpa	Burr Oak	0.9m Ht	POT
5	10	Quercus rubra	Red Oak	0.9m Ht	POT
5	15	Viburnum lentago	Nannyberry	0.9m Ht	POT
5	5	Abies balsamea	Balsam Fir	0.5m Ht	POT
5	5	Juniperus virginiana	Eastern Red Cedar	0.5m Ht	POT
5	5	Larix laricina	Eastern Larch / Tamarack	0.5m Ht	POT
5	5	Picea glauca	White Spruce	0.5m Ht	POT
5	5	Picea mariana	Black Spruce	0.5m Ht	POT
3	5	Pinus strobus	White Pine	0.5m Ht	POT
2	5	Tsuga canadensis	Canadian Hemlock	0.5m Ht	POT
5	5	Thuja occidentalis arborvitae	White Cedar	0.5m Ht	POT
TOTAL	150	260			



No.	Revision	Date
4	SPC SUBMISSION 3	JULY 15 2020
3	Revised per City Comments	January 16 2018
2	For Site Plan Control	January 16 2017
1	For Review/Coordination	January 11 2017



Property Owner **WALL SOUND 2434894 Ontario Inc**

Gino J. Aiello landscape architect www.GJALA.com
 110 Didsbury Road Unit #9 | Ottawa Ontario | K2T 0C2

Project **Wall Sound - Phased Office/ Warehouse**
 210 / 220 Maple Creek Court, Carp Ontario
 Drawing **Landscape Plan**
 Date: JANUARY 2017 Sheet Number
 Scale: 1:400
 City of Ottawa
 Dwg - ##### **L1**
D07-12-17-0112