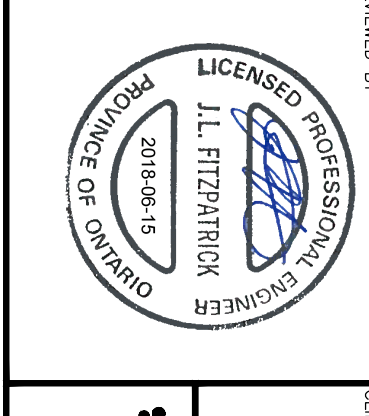
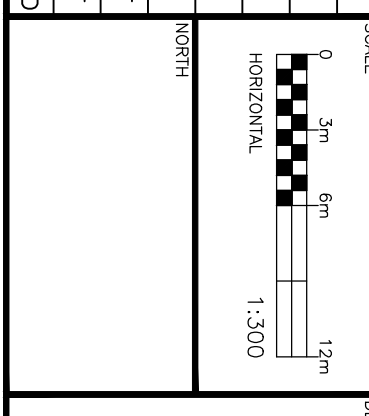


CAUTION
 OF ALL POLE LINES, CONDUITS, WATERMANS, SEWERS AND OTHER UNDERGROUND AND OVERGROUND UTILITIES AND STRUCTURES IS NOT NECESSARY AND SHALL BE DETERMINED BY THE CONTRACTOR WHERE SHOWN, THE ACCURACY OF THE POSITION OF SUCH UTILITIES AND BEFORE STARTING WORK, DETERMINE THE EXACT LOCATION OF ALL SUCH UTILITIES AND DAMAGE TO THEM.

| REV | REVISION DESCRIPTION | DATE | BY | APPD |
|-----|---------------------------------|----------|-----|------|
| 1 | ISSUED FOR SITE PLAN SUBMISSION | 15/06/18 | SAB | BMT |
| 2 | CONCEPT ISSUED TO CLIENT | 23/03/18 | SAB | BMT |

| REV | REVISION DESCRIPTION | DATE | BY | APPD |
|-----|---------------------------------|----------|-----|------|
| 1 | ISSUED FOR SITE PLAN SUBMISSION | 15/06/18 | SAB | BMT |
| 2 | CONCEPT ISSUED TO CLIENT | 23/03/18 | SAB | BMT |



exp.
 ASHCROFT HOMES
 18 ANTARES DRIVE
 OTTAWA, ON, K2E 1A9

| | |
|-----------------|-----|
| DESIGN | UJF |
| CHECKED | BMT |
| PROJECT MANAGER | SAB |
| APPROVED | BMT |

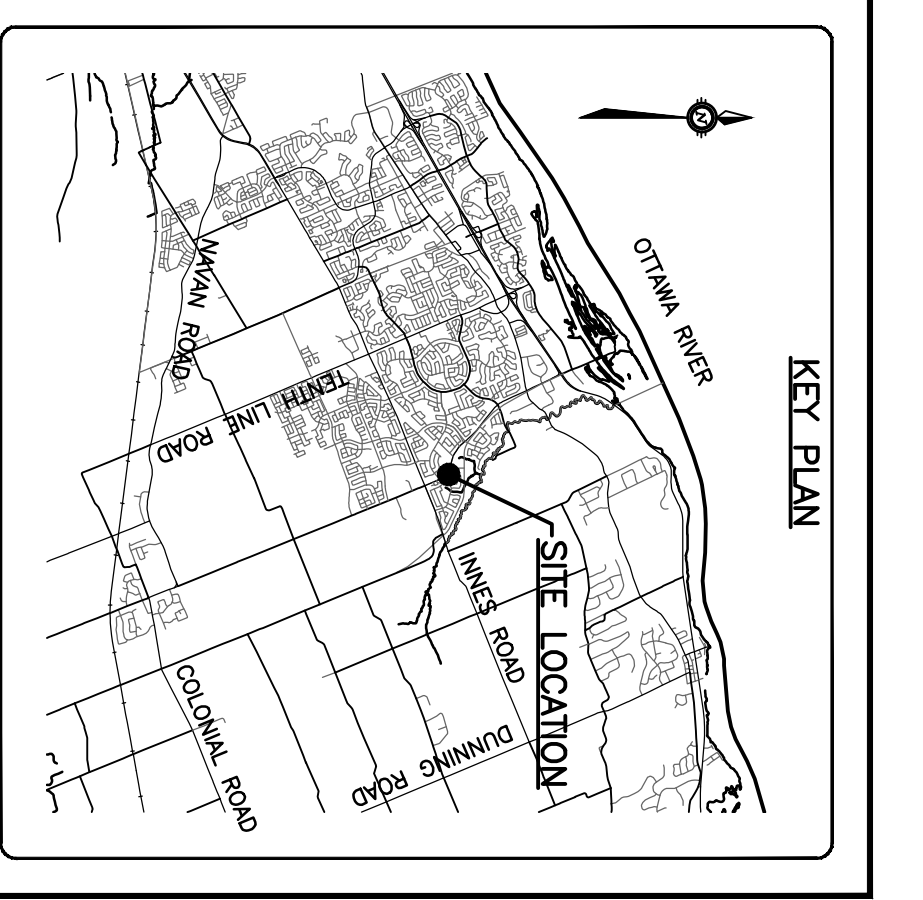
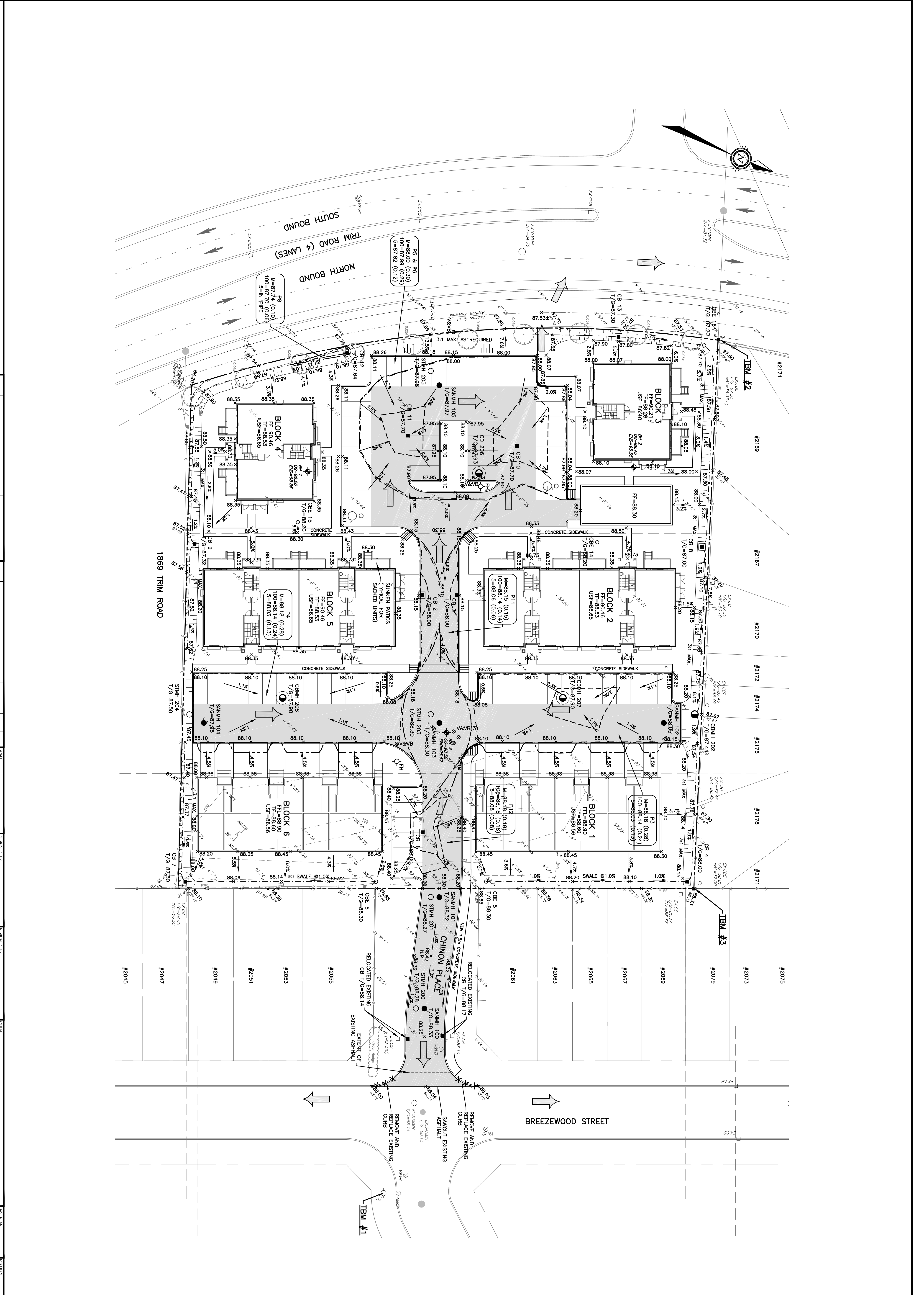
PROJECT
 OAKRIDGE GATE, PHASE II
 OTTAWA, ONTARIO

TITLE
 SITE GRADING PLAN

PROJECT No.
 OTT-00245026-AD

DATE
 MARCH 2018

CO2



BENCHMARKS
 BENCHMARK INFORMATION PROVIDED BY ANNS, OSULLIVAN, VOLLEBERK LTD., AS SHOWN ON TOPOGRAPHIC SURVEY (NOTED BELOW)

BM #1
 TOP OF FIRE HYDRANT SPINDLE ELEVATION=89.10m

BM #2
 TOP OF CSG NORTHING=2637920.06, EASTING=395246.53

BM #3
 TOP OF CSG NORTHING=5037952.73, EASTING=395356.33

TOPOGRAPHIC INFORMATION
 TOPOGRAPHIC INFORMATION PROVIDED BY ANNS, OSULLIVAN, VOLLEBERK LTD., JOB # 18621-18, JANUARY 25, 2018.

LEGAL INFORMATION
 M-PLAN PROVIDED BY ANNS, OSULLIVAN, VOLLEBERK LTD., JOB # 18992-17, RECEIVED ON FEBRUARY 15, 2018.