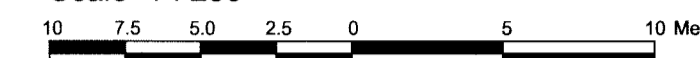


PART OF LOT 1
CONCESSION 5 (RIDEAU FRONT)
Geographic Township of Nepean
CITY OF OTTAWA

Surveyed by Annis, O'Sullivan, Vollebek Ltd.

Scale 1 : 250



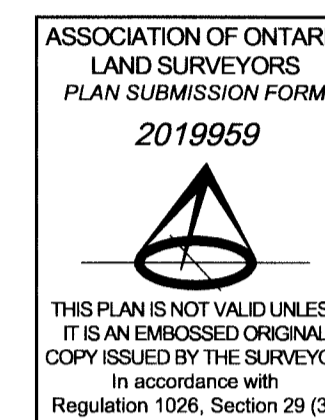
Metric
DISTANCES SHOWN ON THIS PLAN ARE IN METRES AND
CAN BE CONVERTED TO FEET BY DIVIDING BY 0.3048

Surveyor's Certificate

I CERTIFY THAT:
1. This survey and plan are correct and in accordance with the Surveys Act, the Surveyors Act and the Land Titles Act and the regulations made under them.
2. The survey was completed on the 1st day of August, 2017.

August 11, 2017
Date

A.S. Beaton
Andrew J. Brotham
Ontario Land Surveyor



Notes & Legend

- Denotes Survey Monument Planted
- Survey Monument Found
- SIB— Standard Iron Bar
- SSIB— Short Standard Iron Bar
- IB— Iron Bar
- *— 0.3m Long Survey Monument
- (WIT)— Witness
- (AOG)— Annis, O'Sullivan, Vollebek Ltd.
- Meas.— Measured
- (P1)— Plan 4R-29078
- MH-ST— Maintenance Hole (Storm Sewer)
- MH-S— Maintenance Hole (Sanitary)
- MH-B— Maintenance Hole (Bell)
- ST— Underground Storm Sewer
- S— Underground Sanitary Sewer
- W— Underground Water
- P— Underground Power
- B— Underground Bell
- LS— Light Standard
- CB— Catch Basin
- FH— Fire Hydrant
- VC— Valve Chamber - Watermain
- T/G— Top of Grate
- PH-V— Fire Hydrant Valve
- TB-B— Bell Terminal Box
- Deciduous Tree
- *— Coniferous Tree
- BF— Board Fence
- BOS— Bottom of Slope
- TOS— Top of Slope
- PO-M— Metal Pole
- FMP— Fire Main Indicator Post
- φ— Diameter
- + 65.00— Location of Elevations
- C/L— Centreline
- M-W— Monitoring Well
- MP— Metal Fence Post

ALL FOUND SURVEY MONUMENTS ARE (AOG) UNLESS OTHERWISE NOTED.

ALL BEARINGS AND DISTANCES ARE PER (P1) UNLESS OTHERWISE NOTED.

Bearings are grid bearings, derived from the Southern Limit of St. Laurent Boulevard, shown to be N59°32'20"E on Plan 4R-29078 and are referred to the Central Meridian of MTM Zone 9 (78°30' West Longitude) NAD-83 (original).

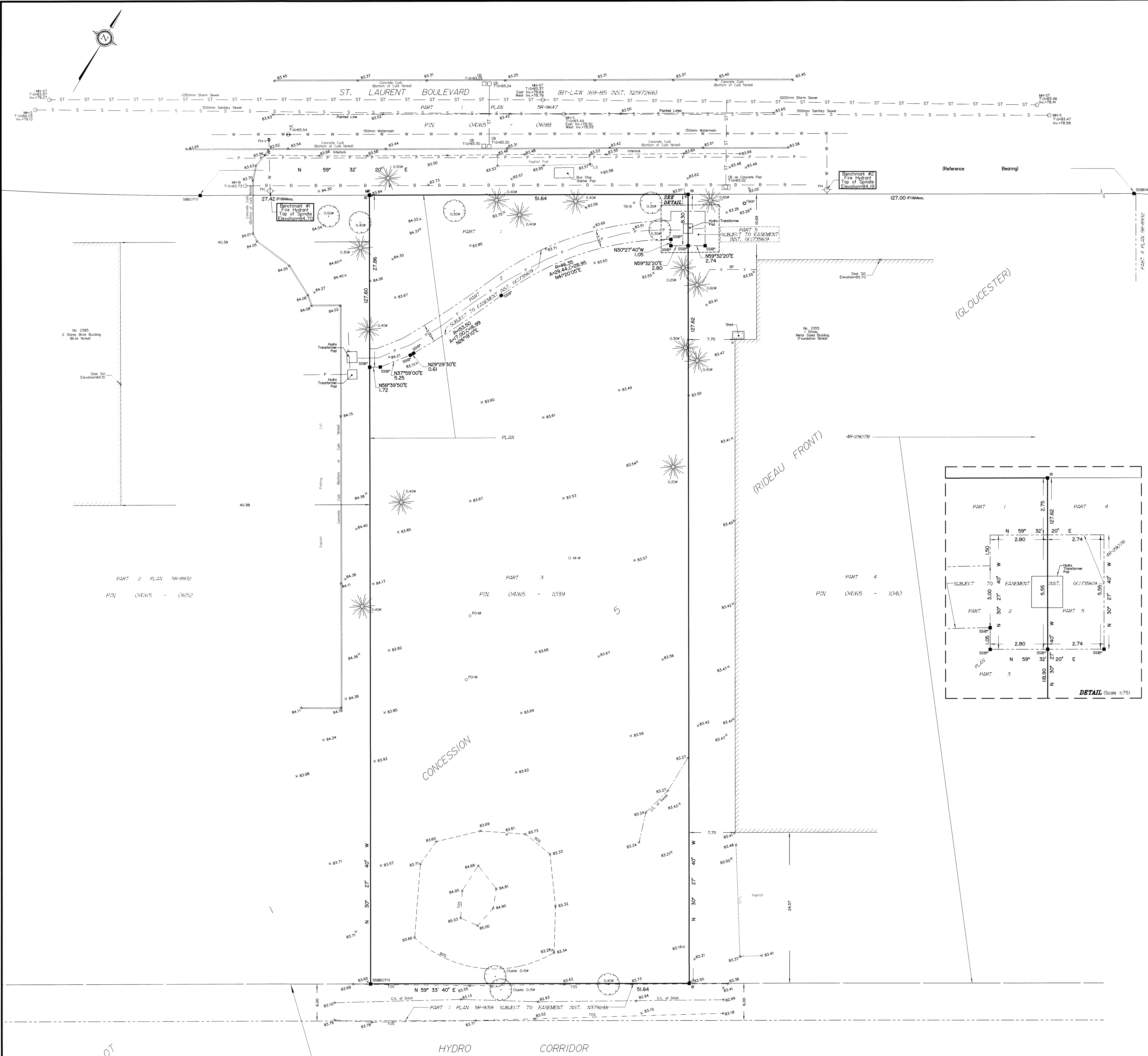
SITE AREA = 6589.8 m²

ELEVATION NOTES

1. Elevations shown are geodetic and are referred to the CGVD28 geodetic datum.
2. It is the responsibility of the user of this information to verify that the job benchmark has not been altered or disturbed and that its relative elevation and description agrees with the information shown on this drawing.

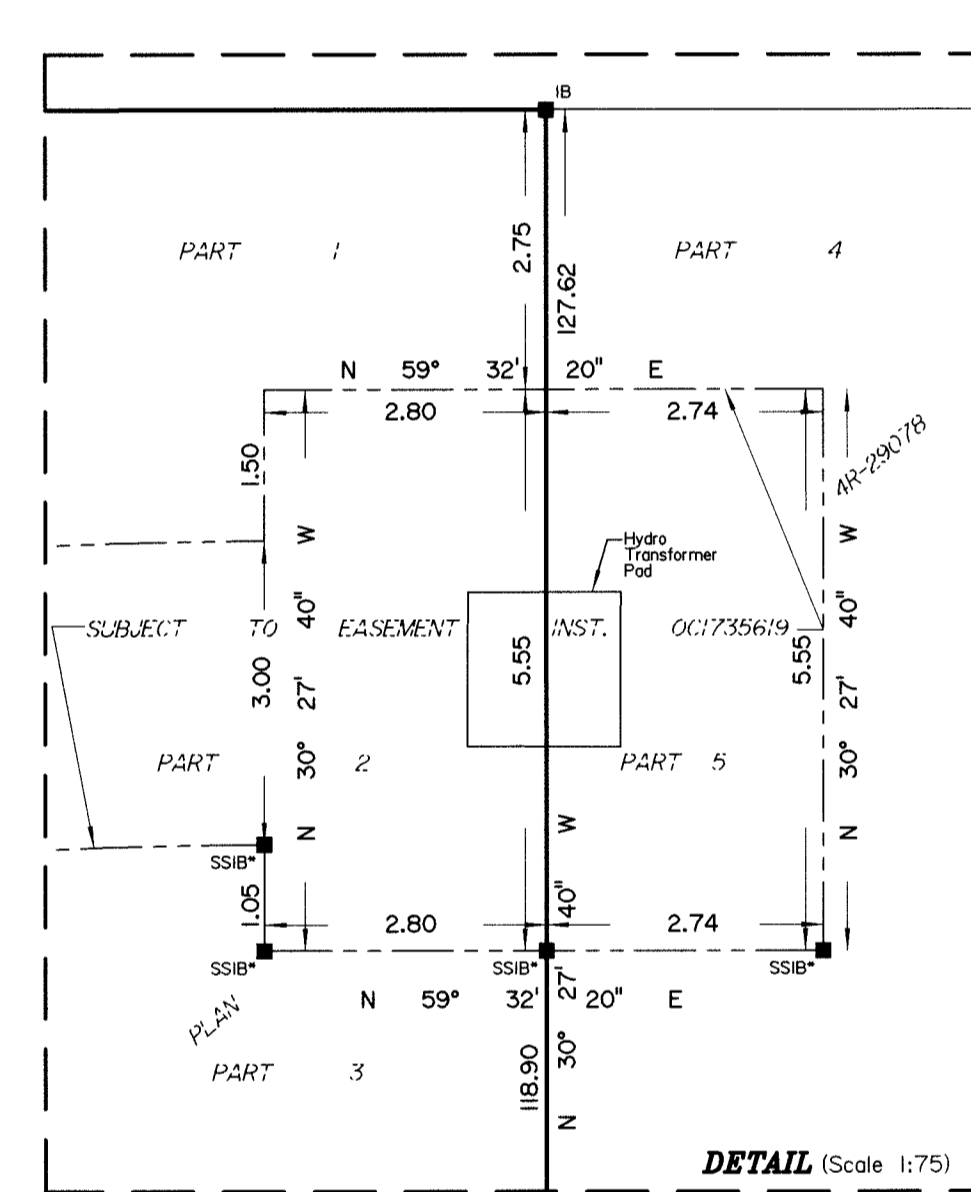
UTILITY NOTES

1. This drawing cannot be accepted as acknowledging all of the utilities and it will be the responsibility of the user to contact the respective utility authorities for confirmation.
2. Only visible surface utilities were located.
3. A field location of underground plant by the pertinent utility authority is mandatory before any work involving breaking ground, probing, excavating, etc.
4. Location of Underground buried Services and Inverts are derived from The City of Ottawa Engineering Plan No. 2304, (sheet 4 of 6)



(GLOUCESTER)

(RIDEAU FRONT)



PART 2 PLAN SR-8932
PIN 04165 - 0652

CONCESSION

HYDRO CORRIDOR
PIN 04165 - 0609

LOT