

NOTES - GENERAL

- ALL EDGES OF DISTURBED PAVEMENT SHALL BE SAW CUT PRIOR TO PLACING NEW PAVEMENT. PAVEMENT REINSTATEMENT SHALL BE WITH STEP JOINTS OF 300mm WIDTH MINIMUM.
- OBTAIN AND PAY FOR ALL NECESSARY PERMITS AND APPROVALS FROM THE MUNICIPAL ENGINEER. THE CONTRACTOR SHALL BE RESPONSIBLE FOR OBTAINING ALL NECESSARY PERMITS AND APPROVALS FROM THE MUNICIPAL ENGINEER. THE CONTRACTOR SHALL BE RESPONSIBLE FOR OBTAINING ALL NECESSARY PERMITS AND APPROVALS FROM THE MUNICIPAL ENGINEER. THE CONTRACTOR SHALL BE RESPONSIBLE FOR OBTAINING ALL NECESSARY PERMITS AND APPROVALS FROM THE MUNICIPAL ENGINEER.
- CONTRACTOR TO CONFIRM ELEVATION OF EXISTING SEWERS AT PROPOSED CONNECTION POINTS AND REPORT ANY DISCREPANCIES TO THE ENGINEER BEFORE COMMENCING ANY WORK.
- ALL SEWERS WITH LESS THAN 2.0m OF COVER ARE SUBJECT TO THE INSULATION DETAIL ON PLAN C801.

NOTES - SEWER

- SEWER BEDDING AS PER PIPE TRENCH DETAIL WITH GRANULAR 'X' BEDDING COMPACTED TO 95% OF ITS SPREAD.
- ALL WORK SHALL BE PERFORMED AS APPLICABLE IN ACCORDANCE WITH OPS 407 AND 410.
- CONTRACTOR TO CONFIRM ELEVATION OF EXISTING SEWERS AT PROPOSED CONNECTION POINTS AND REPORT ANY DISCREPANCIES TO THE ENGINEER BEFORE COMMENCING ANY WORK.
- ALL SEWERS WITH LESS THAN 2.0m OF COVER ARE SUBJECT TO THE INSULATION DETAIL ON PLAN C801.

NOTES - SANITARY

- ALL EDGES OF DISTURBED PAVEMENT SHALL BE SAW CUT PRIOR TO PLACING NEW PAVEMENT. PAVEMENT REINSTATEMENT SHALL BE WITH STEP JOINTS OF 300mm WIDTH MINIMUM.
- OBTAIN AND PAY FOR ALL NECESSARY PERMITS AND APPROVALS FROM THE MUNICIPAL ENGINEER. THE CONTRACTOR SHALL BE RESPONSIBLE FOR OBTAINING ALL NECESSARY PERMITS AND APPROVALS FROM THE MUNICIPAL ENGINEER. THE CONTRACTOR SHALL BE RESPONSIBLE FOR OBTAINING ALL NECESSARY PERMITS AND APPROVALS FROM THE MUNICIPAL ENGINEER.
- CONTRACTOR TO CONFIRM ELEVATION OF EXISTING SEWERS AT PROPOSED CONNECTION POINTS AND REPORT ANY DISCREPANCIES TO THE ENGINEER BEFORE COMMENCING ANY WORK.
- ALL SEWERS WITH LESS THAN 2.0m OF COVER ARE SUBJECT TO THE INSULATION DETAIL ON PLAN C801.

NOTES - WATER

- ALL EDGES OF DISTURBED PAVEMENT SHALL BE SAW CUT PRIOR TO PLACING NEW PAVEMENT. PAVEMENT REINSTATEMENT SHALL BE WITH STEP JOINTS OF 300mm WIDTH MINIMUM.
- OBTAIN AND PAY FOR ALL NECESSARY PERMITS AND APPROVALS FROM THE MUNICIPAL ENGINEER. THE CONTRACTOR SHALL BE RESPONSIBLE FOR OBTAINING ALL NECESSARY PERMITS AND APPROVALS FROM THE MUNICIPAL ENGINEER. THE CONTRACTOR SHALL BE RESPONSIBLE FOR OBTAINING ALL NECESSARY PERMITS AND APPROVALS FROM THE MUNICIPAL ENGINEER.
- CONTRACTOR TO CONFIRM ELEVATION OF EXISTING SEWERS AT PROPOSED CONNECTION POINTS AND REPORT ANY DISCREPANCIES TO THE ENGINEER BEFORE COMMENCING ANY WORK.
- ALL SEWERS WITH LESS THAN 2.0m OF COVER ARE SUBJECT TO THE INSULATION DETAIL ON PLAN C801.

NOTES - STORM

- ALL EDGES OF DISTURBED PAVEMENT SHALL BE SAW CUT PRIOR TO PLACING NEW PAVEMENT. PAVEMENT REINSTATEMENT SHALL BE WITH STEP JOINTS OF 300mm WIDTH MINIMUM.
- OBTAIN AND PAY FOR ALL NECESSARY PERMITS AND APPROVALS FROM THE MUNICIPAL ENGINEER. THE CONTRACTOR SHALL BE RESPONSIBLE FOR OBTAINING ALL NECESSARY PERMITS AND APPROVALS FROM THE MUNICIPAL ENGINEER. THE CONTRACTOR SHALL BE RESPONSIBLE FOR OBTAINING ALL NECESSARY PERMITS AND APPROVALS FROM THE MUNICIPAL ENGINEER.
- CONTRACTOR TO CONFIRM ELEVATION OF EXISTING SEWERS AT PROPOSED CONNECTION POINTS AND REPORT ANY DISCREPANCIES TO THE ENGINEER BEFORE COMMENCING ANY WORK.
- ALL SEWERS WITH LESS THAN 2.0m OF COVER ARE SUBJECT TO THE INSULATION DETAIL ON PLAN C801.

NOTES - ASPHALT

- ALL EDGES OF DISTURBED PAVEMENT SHALL BE SAW CUT PRIOR TO PLACING NEW PAVEMENT. PAVEMENT REINSTATEMENT SHALL BE WITH STEP JOINTS OF 300mm WIDTH MINIMUM.
- OBTAIN AND PAY FOR ALL NECESSARY PERMITS AND APPROVALS FROM THE MUNICIPAL ENGINEER. THE CONTRACTOR SHALL BE RESPONSIBLE FOR OBTAINING ALL NECESSARY PERMITS AND APPROVALS FROM THE MUNICIPAL ENGINEER. THE CONTRACTOR SHALL BE RESPONSIBLE FOR OBTAINING ALL NECESSARY PERMITS AND APPROVALS FROM THE MUNICIPAL ENGINEER.
- CONTRACTOR TO CONFIRM ELEVATION OF EXISTING SEWERS AT PROPOSED CONNECTION POINTS AND REPORT ANY DISCREPANCIES TO THE ENGINEER BEFORE COMMENCING ANY WORK.
- ALL SEWERS WITH LESS THAN 2.0m OF COVER ARE SUBJECT TO THE INSULATION DETAIL ON PLAN C801.

NOTES - CONSTRUCTION

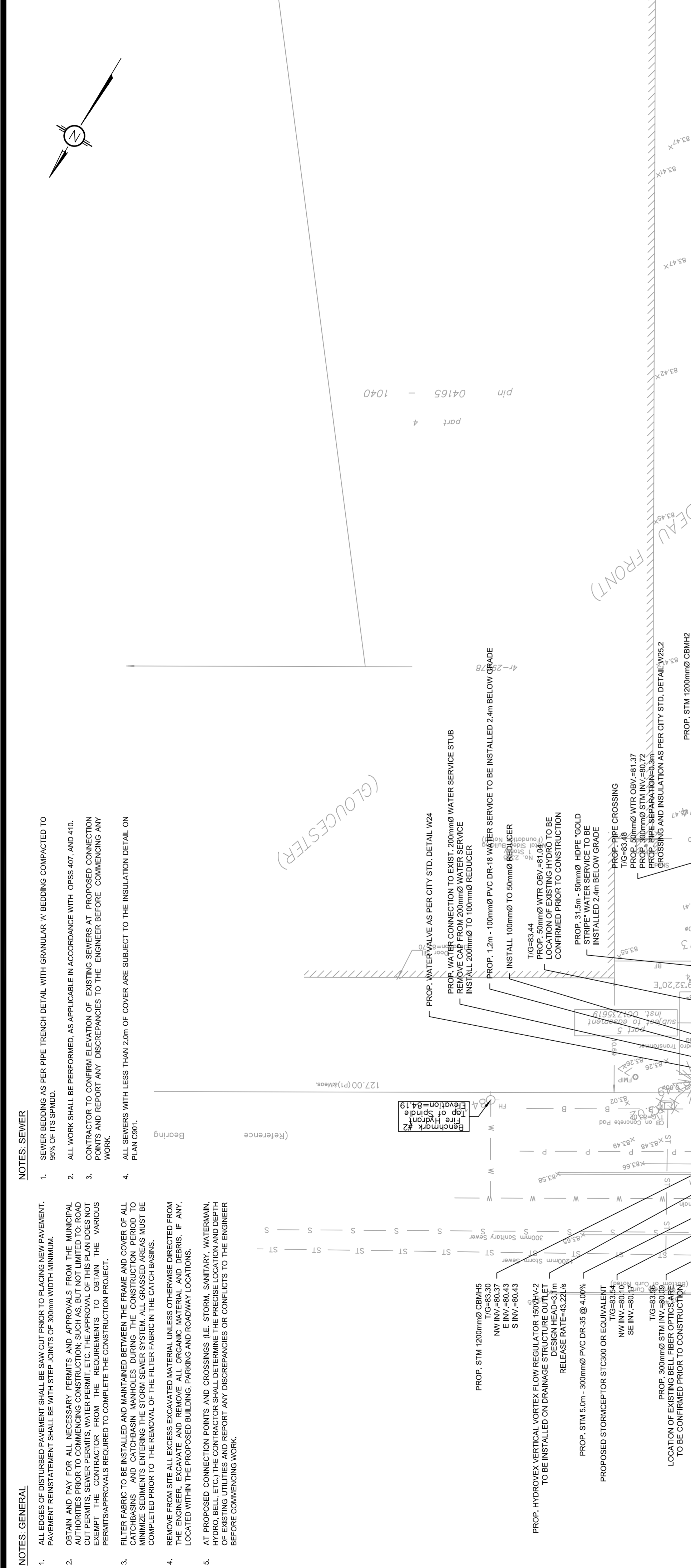
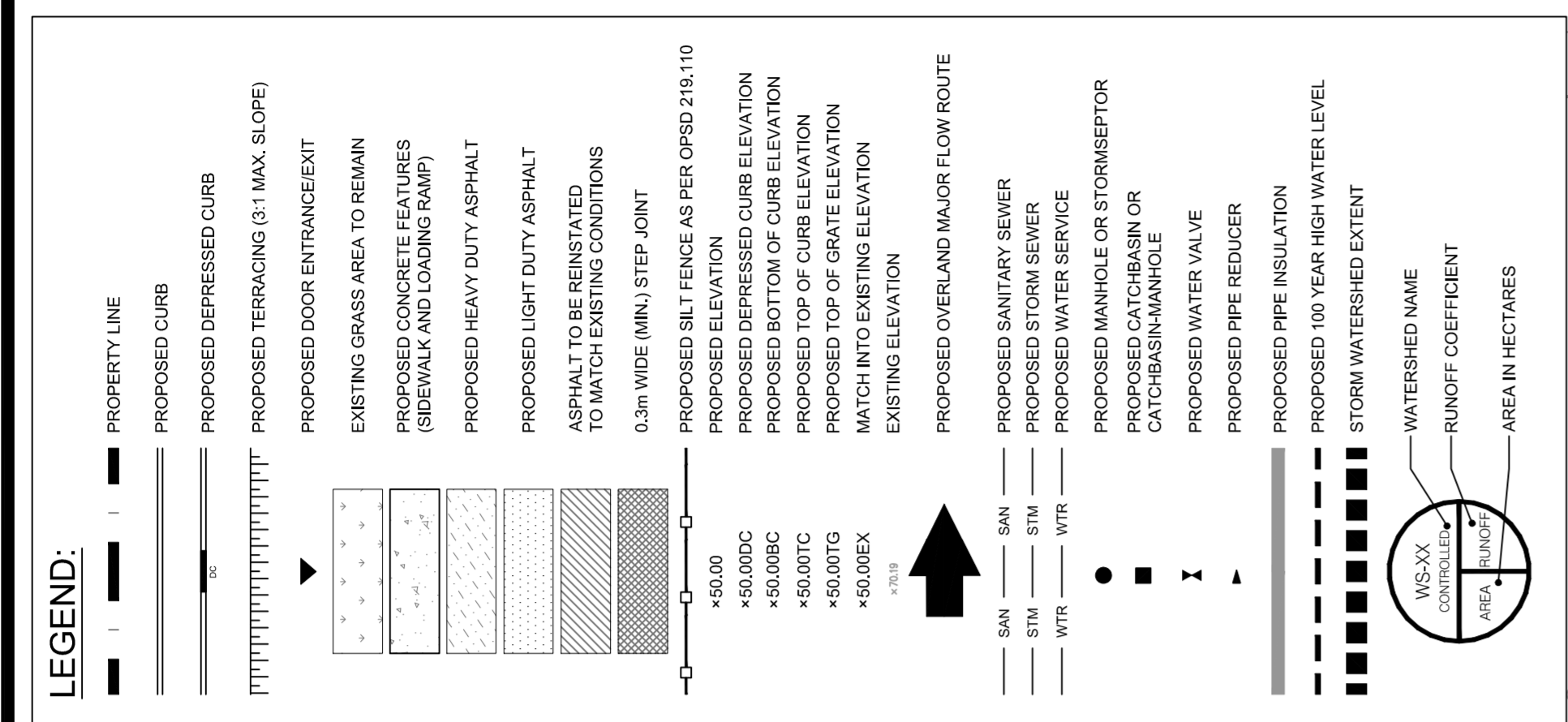
- ALL EDGES OF DISTURBED PAVEMENT SHALL BE SAW CUT PRIOR TO PLACING NEW PAVEMENT. PAVEMENT REINSTATEMENT SHALL BE WITH STEP JOINTS OF 300mm WIDTH MINIMUM.
- OBTAIN AND PAY FOR ALL NECESSARY PERMITS AND APPROVALS FROM THE MUNICIPAL ENGINEER. THE CONTRACTOR SHALL BE RESPONSIBLE FOR OBTAINING ALL NECESSARY PERMITS AND APPROVALS FROM THE MUNICIPAL ENGINEER. THE CONTRACTOR SHALL BE RESPONSIBLE FOR OBTAINING ALL NECESSARY PERMITS AND APPROVALS FROM THE MUNICIPAL ENGINEER.
- CONTRACTOR TO CONFIRM ELEVATION OF EXISTING SEWERS AT PROPOSED CONNECTION POINTS AND REPORT ANY DISCREPANCIES TO THE ENGINEER BEFORE COMMENCING ANY WORK.
- ALL SEWERS WITH LESS THAN 2.0m OF COVER ARE SUBJECT TO THE INSULATION DETAIL ON PLAN C801.

NOTES - INSULATION

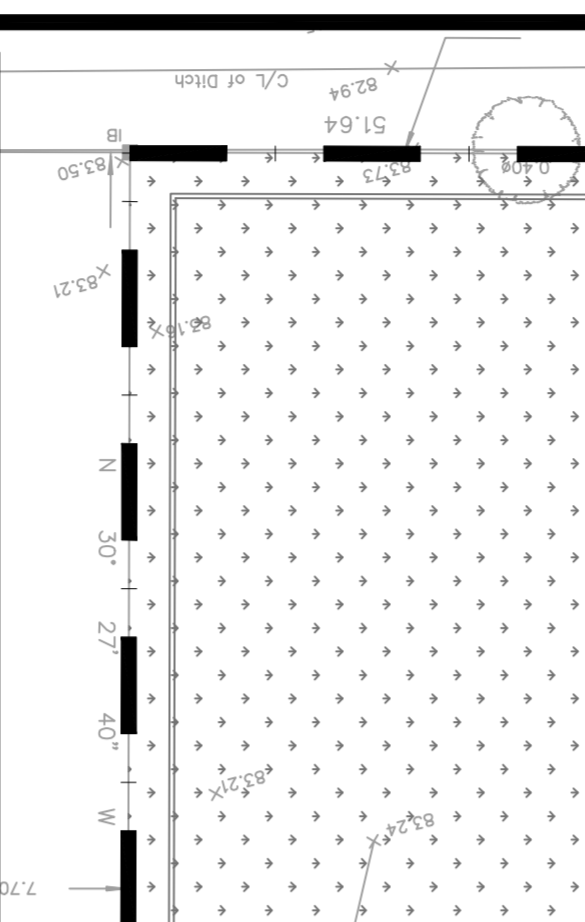
- ALL EDGES OF DISTURBED PAVEMENT SHALL BE SAW CUT PRIOR TO PLACING NEW PAVEMENT. PAVEMENT REINSTATEMENT SHALL BE WITH STEP JOINTS OF 300mm WIDTH MINIMUM.
- OBTAIN AND PAY FOR ALL NECESSARY PERMITS AND APPROVALS FROM THE MUNICIPAL ENGINEER. THE CONTRACTOR SHALL BE RESPONSIBLE FOR OBTAINING ALL NECESSARY PERMITS AND APPROVALS FROM THE MUNICIPAL ENGINEER. THE CONTRACTOR SHALL BE RESPONSIBLE FOR OBTAINING ALL NECESSARY PERMITS AND APPROVALS FROM THE MUNICIPAL ENGINEER.
- CONTRACTOR TO CONFIRM ELEVATION OF EXISTING SEWERS AT PROPOSED CONNECTION POINTS AND REPORT ANY DISCREPANCIES TO THE ENGINEER BEFORE COMMENCING ANY WORK.
- ALL SEWERS WITH LESS THAN 2.0m OF COVER ARE SUBJECT TO THE INSULATION DETAIL ON PLAN C801.

NOTES - FINISH

- ALL EDGES OF DISTURBED PAVEMENT SHALL BE SAW CUT PRIOR TO PLACING NEW PAVEMENT. PAVEMENT REINSTATEMENT SHALL BE WITH STEP JOINTS OF 300mm WIDTH MINIMUM.
- OBTAIN AND PAY FOR ALL NECESSARY PERMITS AND APPROVALS FROM THE MUNICIPAL ENGINEER. THE CONTRACTOR SHALL BE RESPONSIBLE FOR OBTAINING ALL NECESSARY PERMITS AND APPROVALS FROM THE MUNICIPAL ENGINEER. THE CONTRACTOR SHALL BE RESPONSIBLE FOR OBTAINING ALL NECESSARY PERMITS AND APPROVALS FROM THE MUNICIPAL ENGINEER.
- CONTRACTOR TO CONFIRM ELEVATION OF EXISTING SEWERS AT PROPOSED CONNECTION POINTS AND REPORT ANY DISCREPANCIES TO THE ENGINEER BEFORE COMMENCING ANY WORK.
- ALL SEWERS WITH LESS THAN 2.0m OF COVER ARE SUBJECT TO THE INSULATION DETAIL ON PLAN C801.



| ISSUED FOR | BY | DATE |
|------------|--------|-------------|
| 01 | G.M.C. | 13 DEC 2017 |
| REVISIONS | | |



CLIENT
GRAEBECK CONSTRUCTION LTD.

DESIGNED BY
G.M.C.

DRAWN BY
G.M.C.

APPROVED BY
J.C.L.

PROJECT
2465070 ONTARIO LTD.
2375 ST-LAURENT BLVD., OTTAWA, ON

DRAWING TITLE
SERVICING PLAN

PROJECT NO.
170721

DATE
13 DEC 2017

