

NOTES:

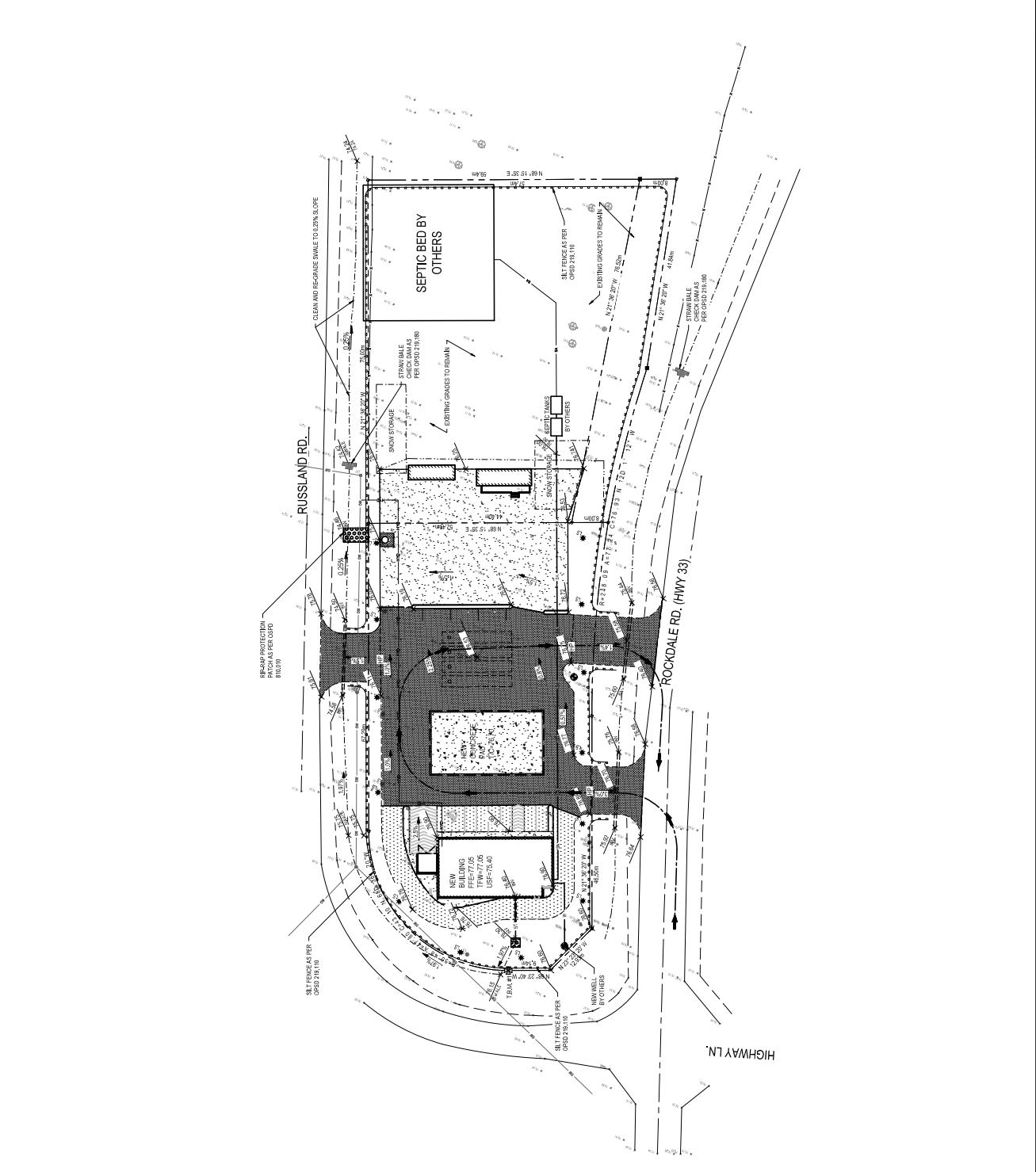
- CONTRACTOR TO VERIFY LOCATION OF ALL BURIED SERVICES PRIOR TO START OF CONSTRUCTION
- TOPOGRAPHIC INFORMATION PROVIDED BY WSP. CONTRACTOR TO VERIFY ACCURACY OF ALL DATA AND ASSESS RISK FROM ASSUMED LOCAL DATA.
 - COORDINATE SYSTEM = NAD83 - UTM ZONE 18N
- LEGAL BOUNDARY SHOWN IS APPROXIMATE AND IS NOT A GUARANTEE OF ACCURACY. CONTRACTOR TO VERIFY SITE BOUNDARY MUST BE CONFINED BY A LICENSED SURVEYOR AND SURVEYOR (C.S.).
- ALL WATER SERVICES TO HAVE 2.0M COVER MINIMUM
- STORMWATER TO BE CLEANED AND MAINTAINED AS PER THE DESIGN AND CONSTRUCTION SPECIFICATIONS. CONSULTANT FOR SITE LAYOUT DESIGN, DIMENSION, SETBACK REQUIREMENT AND SITE DATA.
- CONTRACTOR TO VERIFY ALL UTILITIES, BUILDINGS AND SITE BEFORE COMMENCING WORK.
- SEMI-ANNUAL EROSION CONTROL
 - CONTRACTOR IS RESPONSIBLE TO INSTALL, MAINTAIN AND MONITOR EROSION CONTROL MEASURES.
 - EROSION CONTROL MEASURES TO BE INSTALLED PRIOR TO ANY EXCAVATION OR EARTHWORK.
 - CONTRACTOR TO MONITOR AND MAINTAIN EROSION CONTROL MEASURES THROUGHOUT CONSTRUCTION.
 - CONTRACTOR TO TAKE IMMEDIATE ACTION TO CORRECT ANY EROSION CONTROL MEASURES WHICH MAY BE ALTERED IN THE EVENT THE CONTROL MEASURES ARE DEEMED INSUFFICIENT.

LEGEND:

- EXISTING PROPERTY LINE
- SETBACK
- EXISTING EDGE OF PAVEMENT
- EXISTING EDGE OF ROAD
- WATERMAIN
- SEWER
- SEWER BY OTHERS
- OVERHEAD WIRES
- POWER LINES BY OTHERS
- STRAINABLE
- EXISTING CURB
- EXISTING CURB
- EXISTING VALVE
- EXISTING UTILITY POLE TO BE REMOVED
- PROPOSED LAMP POLE
- EXISTING UTILITY POLE
- EXISTING VEGETATION
- NEW WELL
- STRAINABLE CHECK DAM
- PROPOSED NEW BUILDING OUTLINE
- HEAVY DUTY ASPHALT
- LIGHT DUTY ASPHALT
- SETBACK

TEMPORARY BENCH MARKS

| TBM # | ELEVATION (m) | DESCRIPTION |
|--------|---------------|-------------|
| TBM #1 | 76.41 | TOP OF SB |

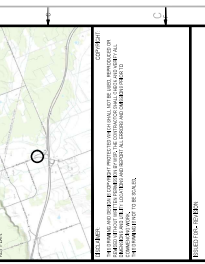


wsp
 CONSULTING ENGINEERS
 1000 SHEPPARD AVENUE EAST
 SUITE 1000
 SCARBOROUGH, ONTARIO M1B 2Y9
 PHONE: (416) 291-1000
 FAX: (416) 291-1001
 WWW.WSPGROUP.COM

PROFESSIONAL ENGINEER
 M. J. AMIS
 LICENSED PROFESSIONAL ENGINEER
 CIVIL
 REG. NO. 122077

MR. ABU EL-ARAB

GAS STATION REDEVELOPMENT
 6175 ROCKDALE RD., CONC. 6
 PT. 1, LOT 27 RP 50R5729 PART 1 & 3 (PREG.)



| DATE | DESCRIPTION |
|--------------------|-------------------|
| 1. 1. APRIL 2018 | ISSUED FOR REVIEW |
| 2. 2. APRIL 2018 | ISSUED FOR REVIEW |
| 3. 3. APRIL 2018 | ISSUED FOR REVIEW |
| 4. 4. APRIL 2018 | ISSUED FOR REVIEW |
| 5. 5. APRIL 2018 | ISSUED FOR REVIEW |
| 6. 6. APRIL 2018 | ISSUED FOR REVIEW |
| 7. 7. APRIL 2018 | ISSUED FOR REVIEW |
| 8. 8. APRIL 2018 | ISSUED FOR REVIEW |
| 9. 9. APRIL 2018 | ISSUED FOR REVIEW |
| 10. 10. APRIL 2018 | ISSUED FOR REVIEW |

CIVIL

GRADING, EROSION AND SEDIMENT CONTROL PLAN

DATE: 12/20/17
 SCALE: AS SHOWN
 PROJECT NO.: 18-000
 SHEET NO.: 1
 TOTAL SHEETS: 1

ISSUED FOR REVIEW