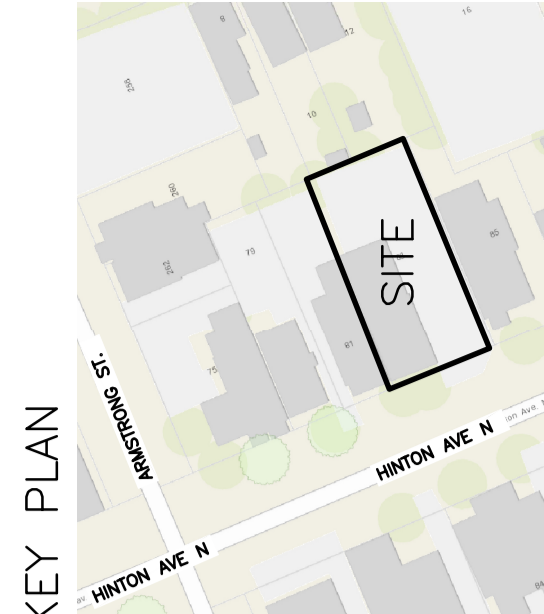


DRAWING LEGEND

CB	CATCH BASIN
MH	MANHOLE
CB/MH	CATCH BASIN/MANHOLE
WS/W	WATER SERVICE / WATERMAIN
SN	SANITARY SEWER
ST	STORM SEWER
VB	VALVE & VALVE BOX
FH	FIRE HYDRANT
FDC	FIRE DEPARTMENT CONNECTION
UP	UTILITY POLE
WM	REMOTE WATER METER READOUT
+	EXISTING GRADE ELEVATION
+ 83.79	PROPOSED GRADE ELEVATION
0.5%	SLOPE OF GRADE
0.5%	EXISTING SLOPE OF GRADE
→	EMERGENCY OVERLAND FLOW
→	SWALE/DITCH (CENTERLINE)
---	PROPERTY LINE
FFL	FIRST FLOOR ELEVATION
BFL	BASEMENT FLOOR ELEVATION
USF	UNDERSIDE OF FOOTING ELEVATION



No.	Date	REVISION
1	MAR 21-18	ISSUED FOR APPROVAL

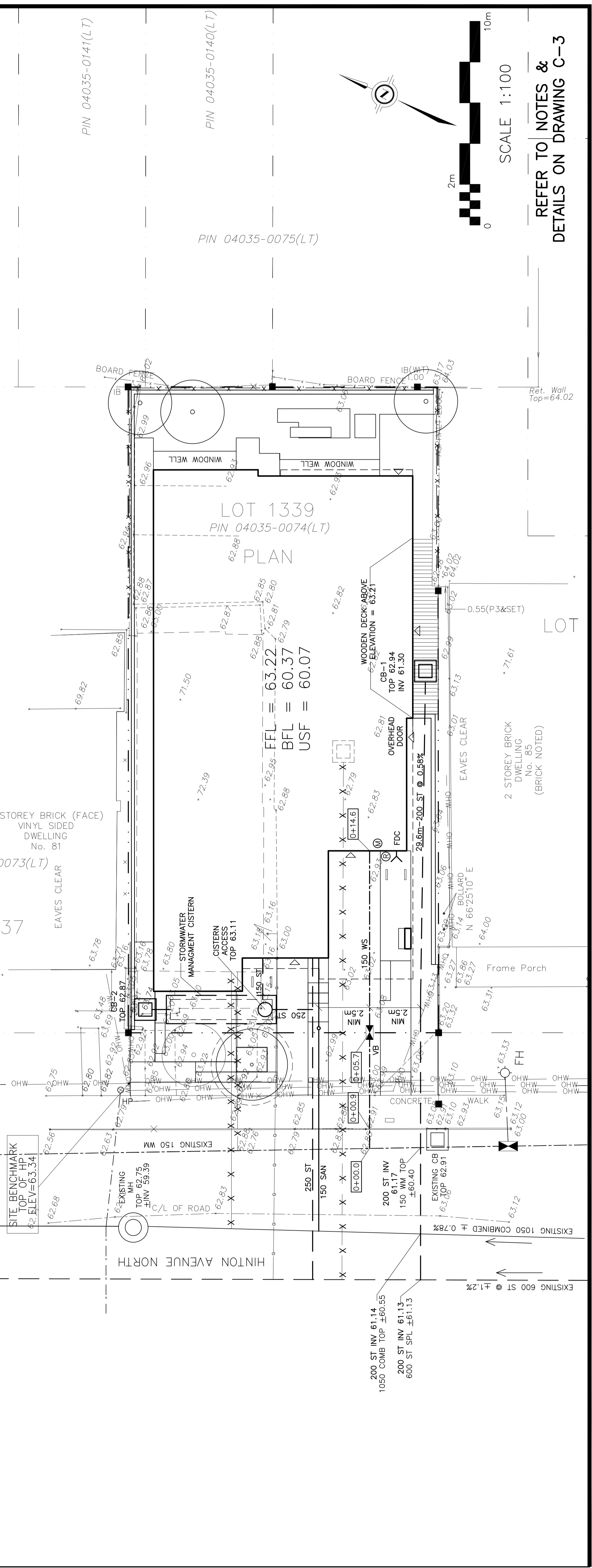
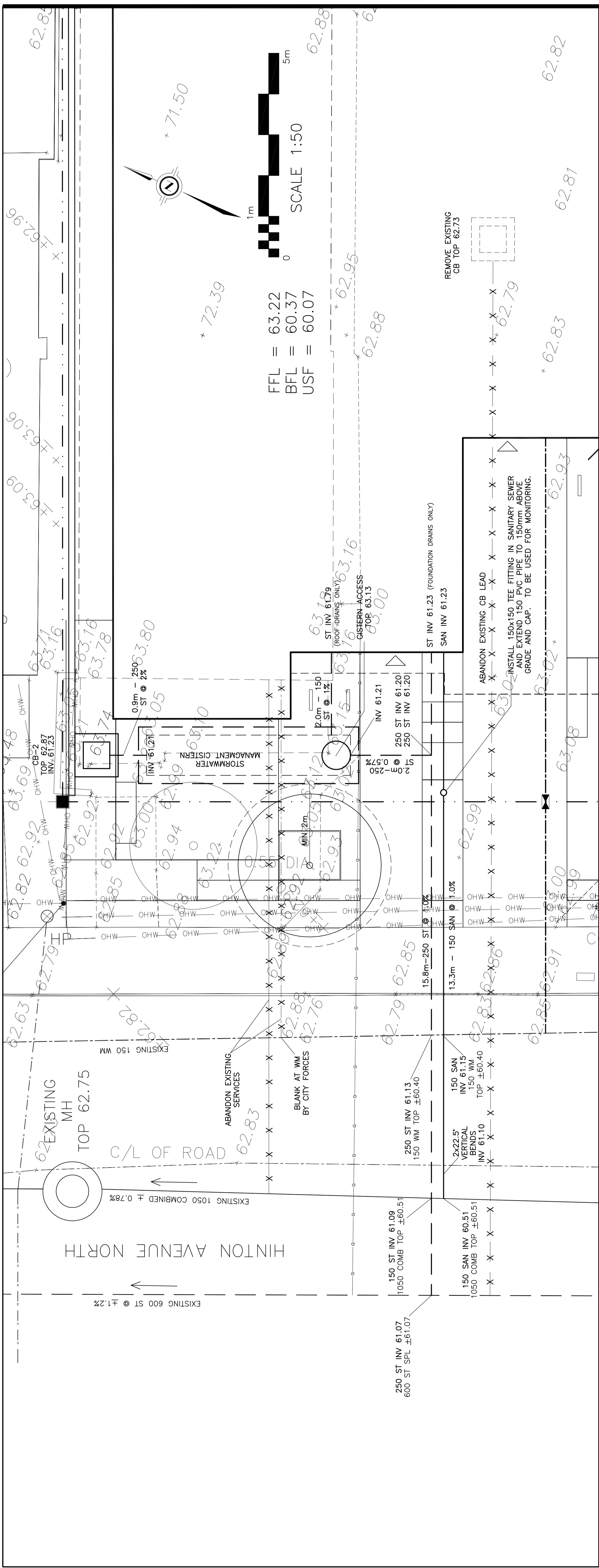
D. B. GRAY ENGINEERING INC.
 Structural Management - Grading & Drainage - Storm & Sanitary Sewers - Watermain
 700 Long Point Circle
 Ottawa, Ontario K1T 4E9
 Tel: 613-425-8044
 dgray@engr.com

Project
**PROPOSED
 7-STORY / 30-UNIT
 APARTMENT/COMMERCIAL
 BUILDING**
 OTTAWA, ONTARIO

Drawing Title
SITE SERVICING PLAN

Engineer's Seal

 D.B.G.
 Hdr. Scale
 Vert. Scale
 Date MAR 13-18
 Job No. 17067
 Drawing No. **C-1**
 of **3**



REFER TO NOTES &
 DETAILS ON DRAWING C-3