

DRAWING LEGEND	
CB	CATCH BASIN
MH	MANHOLE
CB/MH	CATCH BASIN/MANHOLE
WS/W	WATER SERVICE / WATERMAIN
SS/S	SANITARY SEWER
ST	STORM SEWER
V	VALVE & VALVE BOX
FI	FIRE HYDRANT
FDC	FIRE DEPARTMENT CONNECTION
W	WATER METER
RM	REMOTE WATER METER READOUT
U	UTILITY POLE
+	EXISTING GRADE ELEVATION
+ 83.79	PROPOSED GRADE ELEVATION
0.5%	SLOPE OF GRADE
0.5%	EXISTING SLOPE OF GRADE
→	EMERGENCY OVERLAND FLOW
→	SWALE/DITCH (CENTERLINE)
- - -	PROPERTY LINE
FFL	FIRST FLOOR ELEVATION
BFL	BASEMENT FLOOR ELEVATION
USF	UNDERSIDE OF FOOTING ELEVATION



No.	Date	REVISION
1	MAR 21-18	ISSUED FOR APPROVAL

**D. B. GRAY ENGINEERING INC.**  
 Professional Engineering Firm  
 700 Long Point Circle  
 Ottawa, Ontario K1T 4E9  
 Tel: 613-425-8044  
 dgray@engr.com

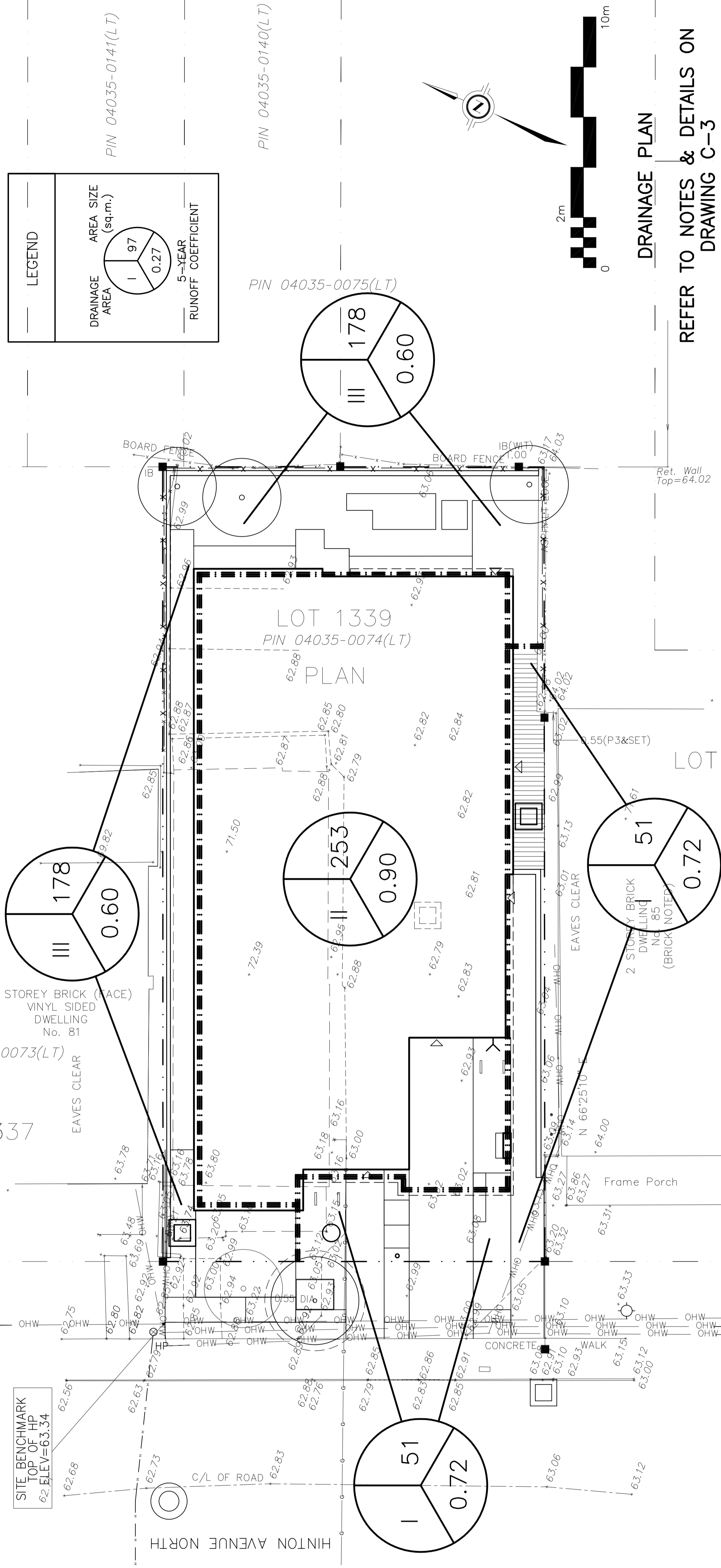
**PROPOSED**  
**7-STORY / 30-UNIT**  
**APARTMENT/COMMERCIAL**  
**BUILDING**  
 OTTAWA, ONTARIO

**DRAINAGE PLAN**  
**GRADING PLAN AND SEDIMENT**  
**& EROSION CONTROL PLAN**

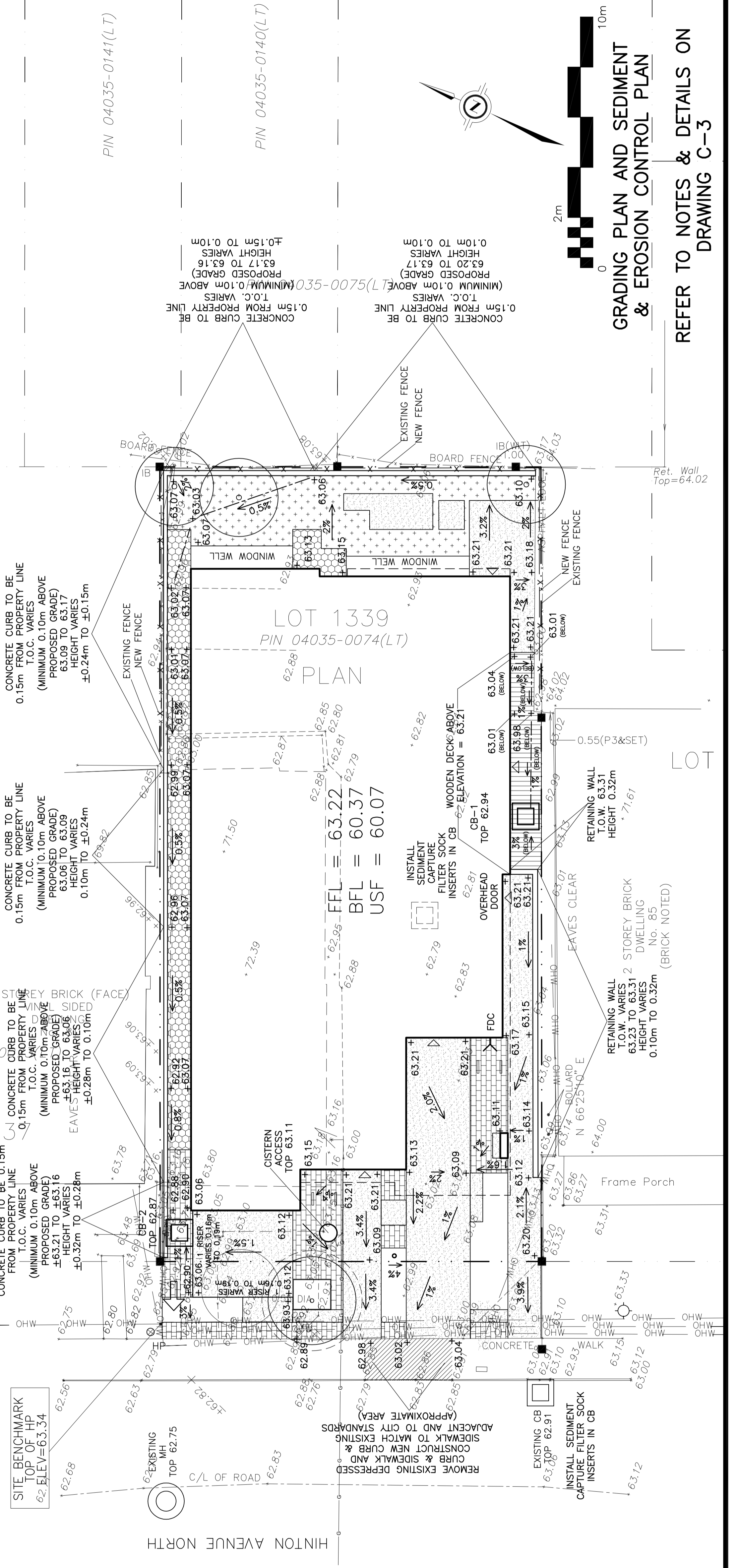
D.B. GRAY  
 PROFESSIONAL ENGINEER  
 CIVIL  
 No. 17016502  
 Exp. 21-19  
 NOT VALID UNLESS  
 SEALED & SIGNED

D.B.G.  
 Hdr. Scale 1:100  
 Vert. Scale  
 Date MAR 13-18  
 Job No. 17067

Drawing No.  
**C-2**  
 of **3**



**DRAINAGE PLAN**  
 REFER TO NOTES & DETAILS ON  
 DRAWING C-3



**GRADING PLAN AND SEDIMENT**  
**& EROSION CONTROL PLAN**  
 REFER TO NOTES & DETAILS ON  
 DRAWING C-3