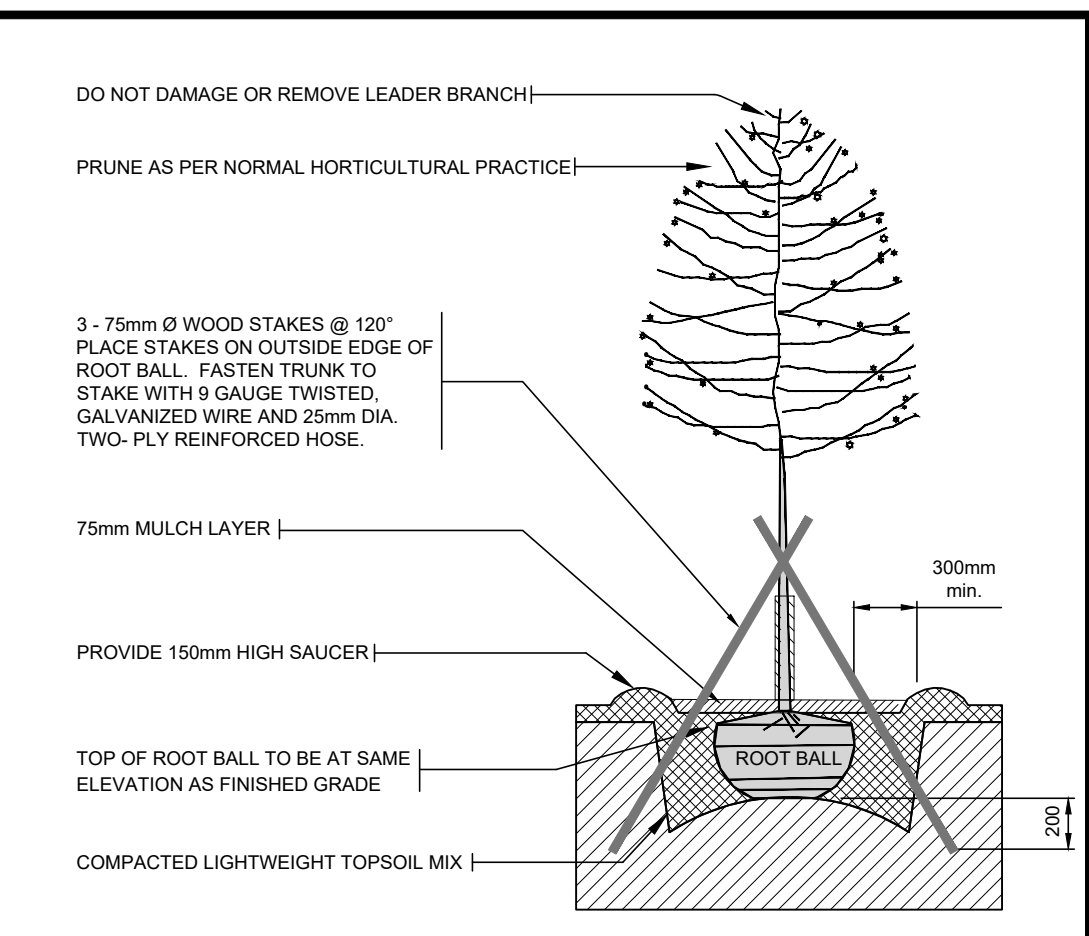


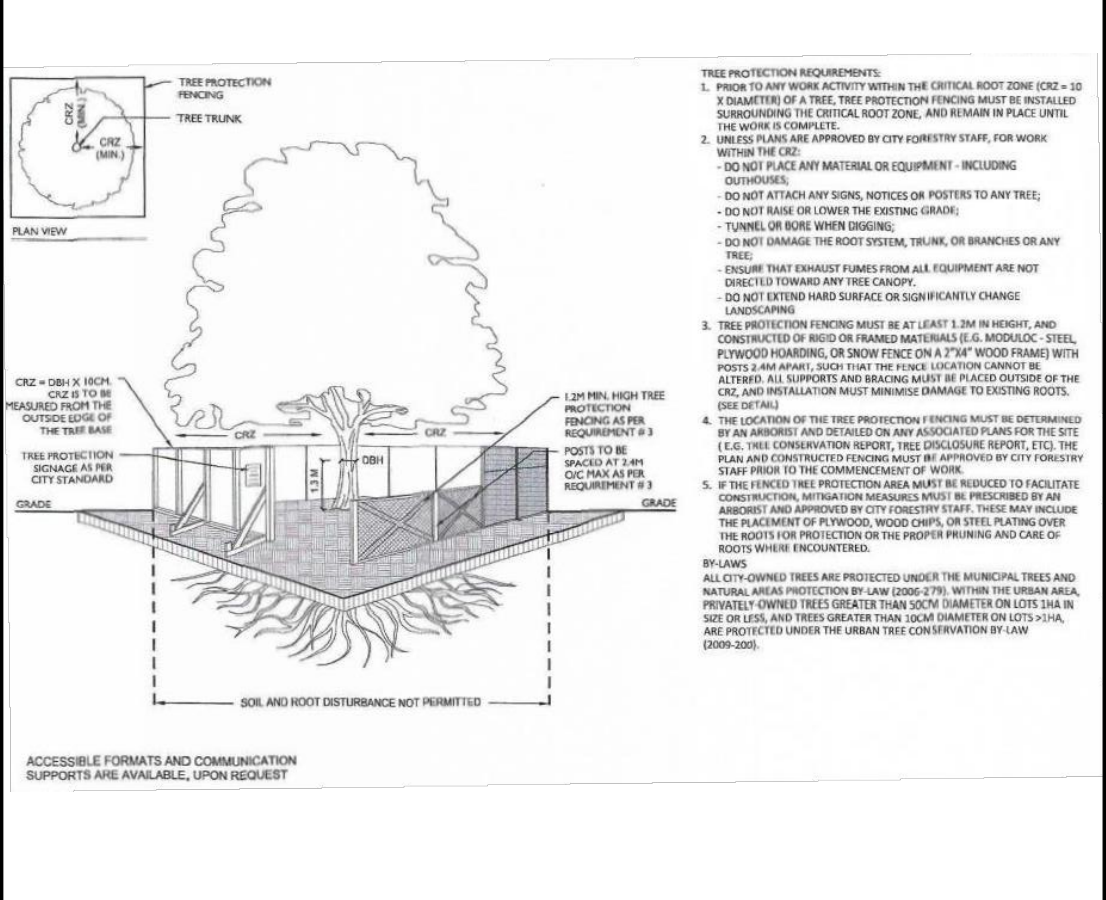
2 TYPICAL CONIFEROUS TREE PLANTING DETAIL
SCALE 1 : 25
*LARGE TREES TO BE ANCHORED TO STRUCTURAL SLAB

NOTES:
1. CUT AND REMOVE TOP 1/3 OF BURLAP FROM ROOT BALL.
2. WATER THOROUGHLY SUBSEQUENT TO PLANTING.
3. WRAP TREE TRUNK FOR PROTECTION FROM CLIMATIC CONDITIONS AND RODENTS.
4. PLACE FIRST STAKE ON SIDE OF PREVAILING WIND.
5. REMOVE TREE RING AND STAKE(S) AFTER ONE YEAR.
6. IN SANDY SOIL CONDITIONS, PLACE TOP OF ROOT BALL AT SAME ELEVATION AS FINISHED GRADE.
7. IN CLAY SOIL CONDITIONS, PLACE TOP OF ROOT BALL AT APPROX. 100mm OVER FINISHED GRADE.



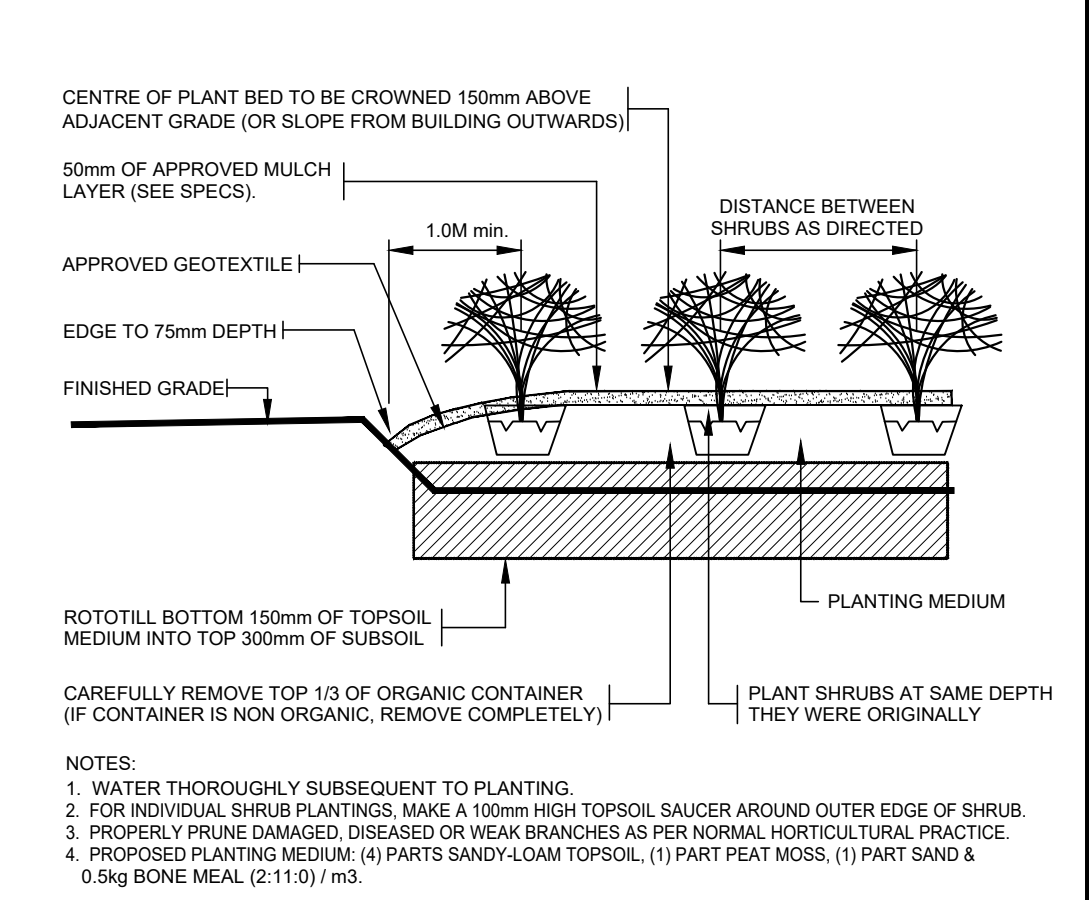
3 TYPICAL DECIDUOUS TREE PLANTING DETAIL
SCALE 1 : 25
* PROVIDE MIN. 18m³ GROWING MEDIUM / TREE
* PLANT 1.5m FROM WALKWAY / CURB
* LARGE TREES TO BE ANCHORED TO STRUCTURAL SLAB

NOTES:
1. CUT AND REMOVE TOP 1/3 OF BURLAP FROM ROOT BALL.
2. WATER THOROUGHLY SUBSEQUENT TO PLANTING.
3. WRAP TREE TRUNK FOR PROTECTION FROM CLIMATIC CONDITIONS AND RODENTS.
4. PLACE FIRST STAKE ON SIDE OF PREVAILING WIND.
5. REMOVE TREE RING AND STAKE(S) AFTER ONE YEAR.



4 TREE PROTECTION DETAIL
SCALE N.T.S. CITY OF OTTAWA STANDARD

NOTES:
1. WATER THOROUGHLY SUBSEQUENT TO PLANTING.
2. FOR INDIVIDUAL SHRUB PLANTINGS, MAKE A 100mm HIGH TOPSOIL SAUCER AROUND OUTER EDGE OF SHRUB.
3. PROPERLY PRUNE DAMAGED, DISEASED OR WEAK BRANCHES AS PER NORMAL HORTICULTURAL PRACTICE.
4. PROPOSED PLANTING MEDIUM: (4) PARTS SANDY-LOAM TOPSOIL, (1) PART PEAT MOSS, (1) PART SAND & 0.5kg BONE MEAL (2-11-0) / m³.



5 TYPICAL SHRUB PLANTING DETAIL
SCALE 1 : 25

NOTES:
1. WATER THOROUGHLY SUBSEQUENT TO PLANTING.
2. FOR INDIVIDUAL SHRUB PLANTINGS, MAKE A 100mm HIGH TOPSOIL SAUCER AROUND OUTER EDGE OF SHRUB.
3. PROPERLY PRUNE DAMAGED, DISEASED OR WEAK BRANCHES AS PER NORMAL HORTICULTURAL PRACTICE.
4. PROPOSED PLANTING MEDIUM: (4) PARTS SANDY-LOAM TOPSOIL, (1) PART PEAT MOSS, (1) PART SAND & 0.5kg BONE MEAL (2-11-0) / m³.

GENERAL NOTES

- ALL GENERAL SITE INFORMATION AND CONDITIONS COMPILED FROM EXISTING PLANS AND CONSULTANTS FIELD NOTES. REPORT ALL DISCREPANCIES PRIOR TO ANY WORK. NO RESPONSIBILITY IS BORN BY THE CONSULTANT FOR UNDERLYING SUBSURFACE CONDITIONS.
- THE CONTRACTOR IS TO NOTIFY ALL UTILITY COMPANIES PRIOR TO EXCAVATION TO ASCERTAIN LOCATION OF UNDERLYING SERVICES. VERIFY ALL ELEVATIONS WITH INFORMATION SHOWN.
- ALL DIMENSIONS AND GRADES ARE TO BE VERIFIED ON SITE PRIOR TO ANY CONSTRUCTION BY THE LANDSCAPE ARCHITECT.
- CONTRACTOR IS TO MAINTAIN POSITIVE SURFACE RUNOFF THROUGHOUT THE ENTIRE CONSTRUCTION PERIOD.
- REINSTATE ALL DAMAGE CAUSED BY CONTRACTOR TO STRUCTURES, CURBS, PAVEMENT, PLANTING, ROAD, SHOULDERS, AND OTHER SITE AMENITIES.
- CONTRACTOR TO STAKE PLANTING LOCATION AND OTHER SITE AMENITIES, UNDER SUPERVISION OF LANDSCAPE ARCHITECT, PRIOR TO ANY WORK.
- EACH TASK OF WORK TO BE APPROVED BY THE LANDSCAPE ARCHITECT PRIOR TO PROCEEDING TO THE NEXT.
- NO MODIFICATIONS TO PLANS AND DETAILS, AND NO MATERIAL SUBSTITUTIONS IS PERMITTED WITHOUT THE WRITTEN AUTHORIZATION OF THE LANDSCAPE ARCHITECT.
- USE OF PLAN WITHOUT THE LANDSCAPE ARCHITECT'S SEAL AND SIGNATURE IS NOT ALLOWED AND RELEASE THE LANDSCAPE ARCHITECT OF ANY RESPONSIBILITY.

8	
7	
6	
5	
4	
3	
2	2020-04-11 ISSUED FOR SITE PLAN CONTROL
1	2020-04-28 ISSUED FOR SPC REVIEW
NO	DATE REVISION

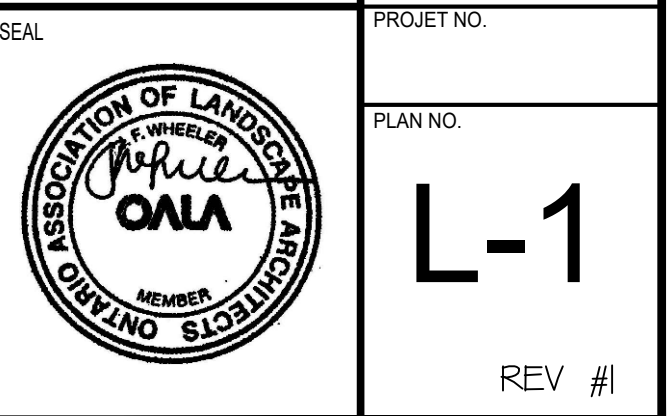
ASHCROFT
BUILDING YOUR LIFESTYLE



PROJECT **Q WEST PHASE - 2**
114 RICHMOND ROAD
OTTAWA, ONTARIO

TITLE **LANDSCAPE PLAN**

DRAWN BY: J.W. / R.M.
DATE: March 2020
SCALE: 1 : 200
VERIFIED BY: J. Wheeler
PROJECT NO.:
PLAN NO.: **L-1**



PLANT LIST

ID.	QTY	BOTANICAL NAME	COMMON NAME	SPACING	SIZE	REMARKS
DECIDUOUS TREES						
Ac	1	Amelanchier Canadensis	Serviceberry	See Plan	50mm cal.	WB, straight trunk, uniformly well branched
Cat	4	Cornus Alternifolia	Pagoda Dogwood	See Plan	50mm cal.	WB, straight trunk, uniformly well branched
Pc	5	Prunus Cerasifera	Newport Flowing Plum	See Plan	50mm cal.	WB, straight trunk, uniformly well branched
Ag	1	Acer Ginnala	Amur Maple	See Plan	50mm cal.	WB, straight trunk, uniformly well branched
CONIFEROUS TREES						
Pp	12	Picea Pungens	Colorado Green Spruce	See Plan	4.0m ht.	WB, straight trunk, uniformly well branched
Pa	2	Picea Abies	Norway Spruce	See Plan	4.0m ht.	WB, straight trunk, uniformly well branched
SHRUBS						
AS	60	Astilbe	Bridalveil	0.6m o/c	50cm ht.	1 Gal Pots, full body, uniformly well branched
Bgv	60	Buxus	Green Velvet Boxwood	1.0m o/c	50cm ht.	3 Gal Pots, full body, uniformly well branched
Jh	10	Juniperus Horizontalis Pc	Compact Andorra Juniper	1.0m o/c	50cm ht.	3 Gal Pots, full body, uniformly well branched
Ha	24	Hydrangea Arborescens	Annabelle Hydrangea	1.0m o/c	60cm ht.	3 Gal Pots, full body, uniformly well branched
Btm	12	Berberis Thunbergii	Cherry Bomb Barberry	1.0m o/c	60cm ht.	3 Gal Pots, full body, uniformly well branched
Eac	24	Eunymus Alagus Compacta	Compact Burning Bush	1.0m o/c	60cm ht.	3 Gal Pots, full body, uniformly well branched
Js	72	Juniperus Sabina	Savin Juniper	1.0m o/c	60cm ht.	3 Gal Pots, full body, uniformly well branched
Rr	24	Rosa Rugosa	Rogrusa Rose	1.0m o/c	60cm ht.	3 Gal Pots, full body, uniformly well branched
Iv	5	Ilex Vercicillata	Winterberry	1.0m o/c	60cm ht.	3 Gal Pots, full body, uniformly well branched
Ra	16	Rhus Aromatica	Fragrant Sumac	1.0m o/c	60cm ht.	3 Gal Pots, full body, uniformly well branched
Sr	3	Syrinea Retioulata	Japanese Tree Lilac	See Plan	240cm ht.	WB, straight trunk, uniformly well branched
Sv	18	Syrinea Vulgaris	Common Lilac	See Plan	240cm ht.	WB, straight trunk, uniformly well branched
PERENNIALS / GRASSES						
CaKf	60	Calamagrostis Acutiflora	Karl Forester Feather Reed Grass	1.0m o/c	60cm ht.	3 Gal Pots, full body, uniformly well branched
Acp	80	Anemone	Canada Anemone	1.0m o/c	60cm ht.	1 Gal Pots
Nep	48	Nepeta Mussini	Cat Mint	1.0m o/c	60cm ht.	2 Gal Pots
Pag	60	Pennisetum Alopecuroides	Fountain Grass	1.0m o/c	60cm ht.	2 Gal Pots
VINES / GROUND COVER						
VM	188	Vinca Minor	Periwinkle	0.6m o/c	60cm ht.	10cm Pots
PT	60	Parthenocissus Tricupidata	Boston Ivy	1.0m o/c	60cm ht.	3 Gal Pots, full body, uniformly well branched