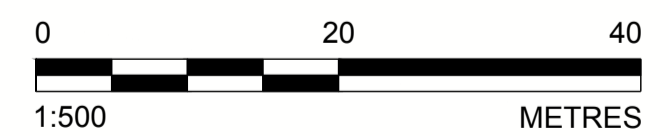
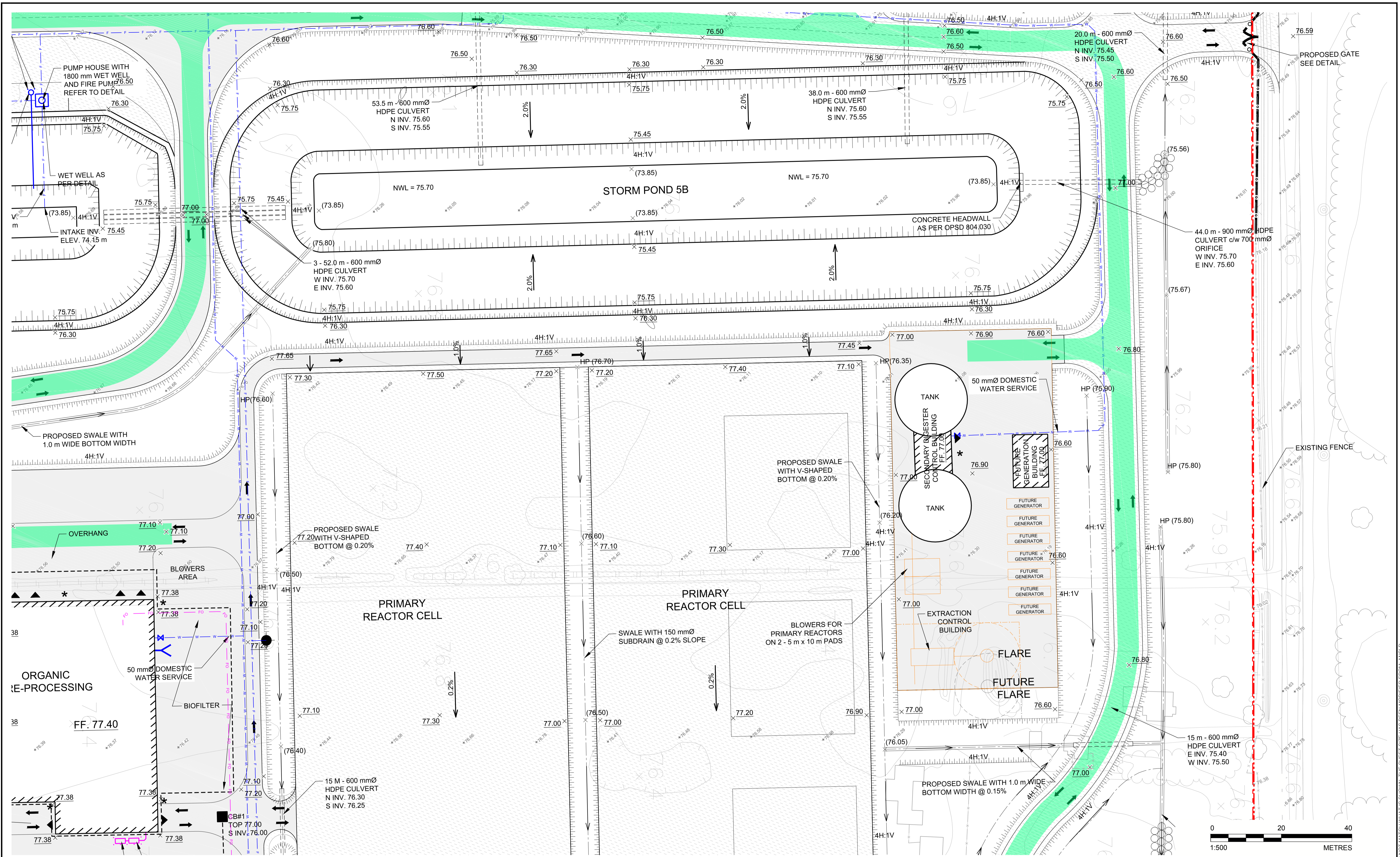


Path: g:\golder\gpc\active\active\spatial\miller\_paving\1787048-0006-CH-0002.dwg | Last Edited By: zsavva Date: 2018-12-17 Time: 1:38:47 PM | Printed By: zsavva Date: 2018-12-17 Time: 3:03:29 PM



REV.	YYYY-MM-DD	DESCRIPTION	DESIGNED	PREPARED	REVIEWED	APPROVED
2	2018-12-14	REVISED FOR SITE PLAN APPROVAL	MHK	MLF	DVK	DVK
1	2018-06-15	ISSUED FOR SITE PLAN APPROVAL	MHK	MLF	DVK	DVK

SEAL	CLIENT TAGGART MILLER ENVIRONMENTAL SERVICES	PROJECT CAPITAL REGION RESOURCE RECOVERY CENTRE	
	CONSULTANT	TITLE GRADING AND DRAINAGE PLAN	
			GOLDER ASSOCIATES LTD. 1931 ROBERSON ROAD OTTAWA, ONTARIO CANADA (+1) (613) 592 9600 www.golder.com
		PROJECT NO. 1787048	CONTROL 0006
		REV. of 2 of	DRAWING C09

IF THIS MEASUREMENT DOES NOT MATCH WHAT IS SHOWN, THE SHEET SIZE HAS BEEN MODIFIED FROM: ANSI D