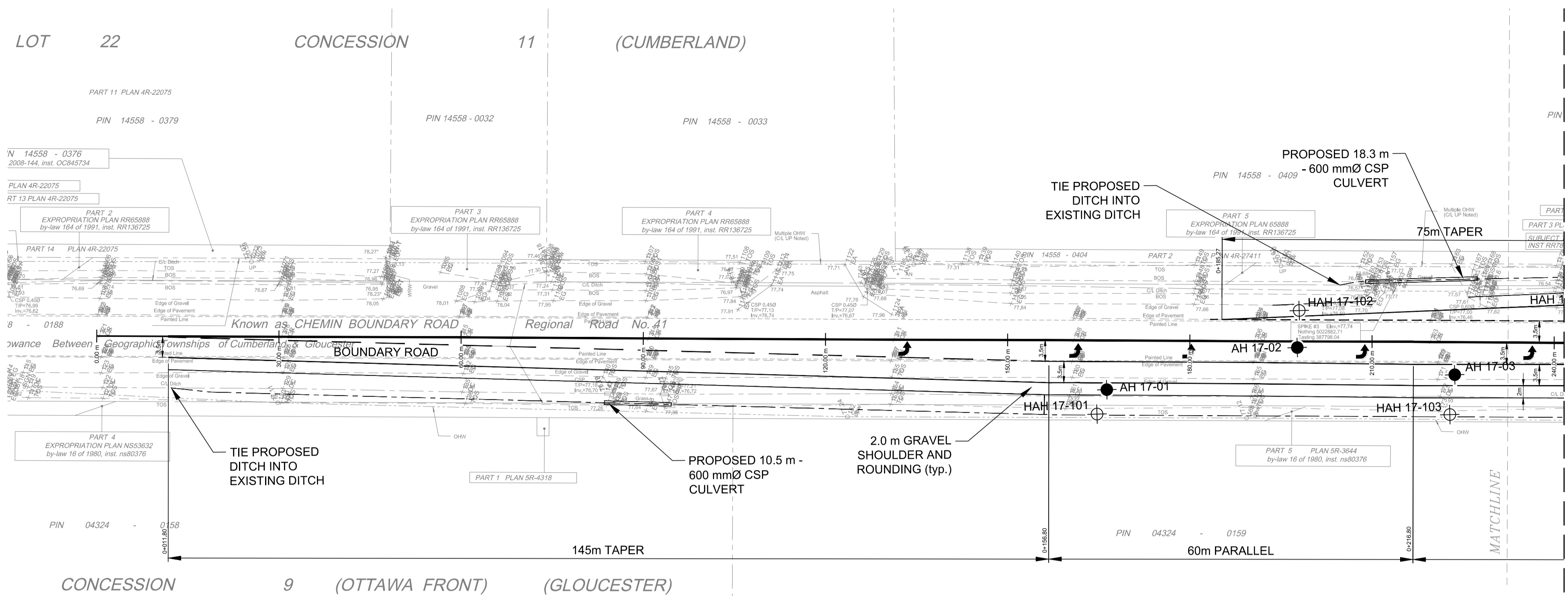


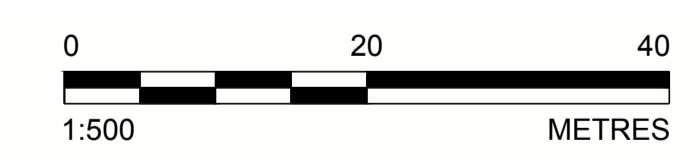
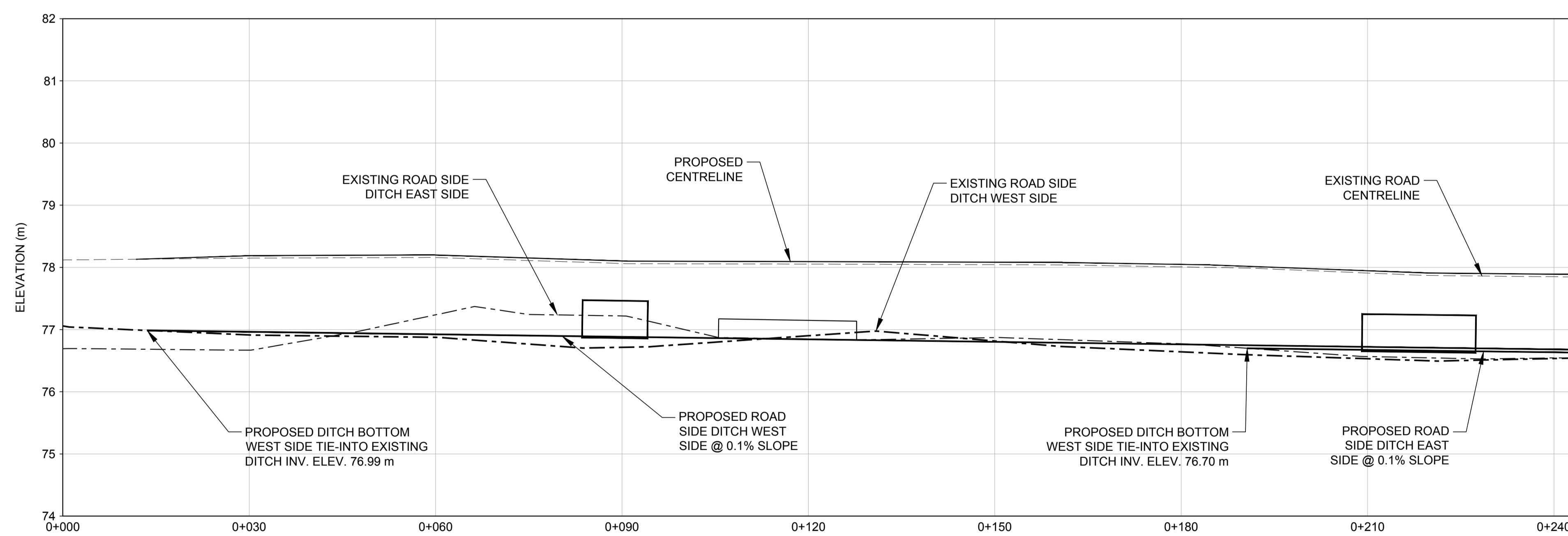
Path: \\golder\gpc\gpc\outawa\active\spatial\mml\mml\paving\luc\CRRC\ACAD\1787048\005\CH\005.dwg | File Name: 1787048-005-CH-005.dwg | Last Edited By: mfergat | Date: 2018-12-17 Time: 11:34:06 AM



LEGEND

- APPROXIMATE BOREHOLE LOCATION
- APPROXIMATE MANUAL AUGERHOLE LOCATION
- APPROXIMATE AUGERHOLE LOCATION

- REFERENCE(S)**
- TOPOGRAPHIC SURVEY PROVIDED IN A DIGITAL FORMAT BY ANNIS, O'SULLIVAN, VOLLEBEKK LTD., JOB No. XRF-AOV-2017_Survey_BoundaryRD, FIELD WORK COMPLETED ON November 22, 2017.
 - PROPOSED BOUNDARY ROAD SITE ACCESS GEOMETRY PROVIDED BY TAGGART GROUP OF COMPANIES, TECHNICAL SUPPORT DOCUMENT #9, TRAFFIC IMPACT STUDY.
 - COORDINATE SYSTEM, HORIZONTAL DATUM MTM ZN9, VERTICAL DATUM: CGVD28.
 - GEOTECHNICAL/PAVEMENT INVESTIGATION, PROPOSED BOUNDARY ROAD IMPROVEMENTS, CAPITAL REGION RESOURCE CENTRE (CRRC), GOLDER ASSOCIATES LTD., DATED APRIL 10, 2018.



REV.	YYYY-MM-DD	DESCRIPTION	DESIGNED	PREPARED	REVIEWED	APPROVED
2	2018-11-30	ISSUED FOR APPROVAL	DVK	MLF	DVK	DVK
1	2018-10-04	ISSUED FOR CIRCULATION	DVK	MLF	DVK	DVK

SEAL

CLIENT
TAGGART MILLER ENVIRONMENTAL SERVICES

CONSULTANT

GOLDER ASSOCIATES LTD.
1931 ROBERSON ROAD
OTTAWA, ONTARIO
CANADA
[+1] (613) 592 9600
www.golder.com

PROJECT
CAPITAL REGION RESOURCE RECOVERY CENTRE
BOUNDARY ROAD MODIFICATIONS
5471 BOUNDARY ROAD, OTTAWA

TITLE
PLAN AND PROFILE - 1

PROJECT NO. 1787048	CONTROL 0005	REV. 2	4 of 6	DRAWING RM04
------------------------	-----------------	-----------	--------	-----------------

IF THIS MEASUREMENT DOES NOT MATCH WHAT IS SHOWN, THE SHEET SIZE HAS BEEN MODIFIED FROM ANSI D