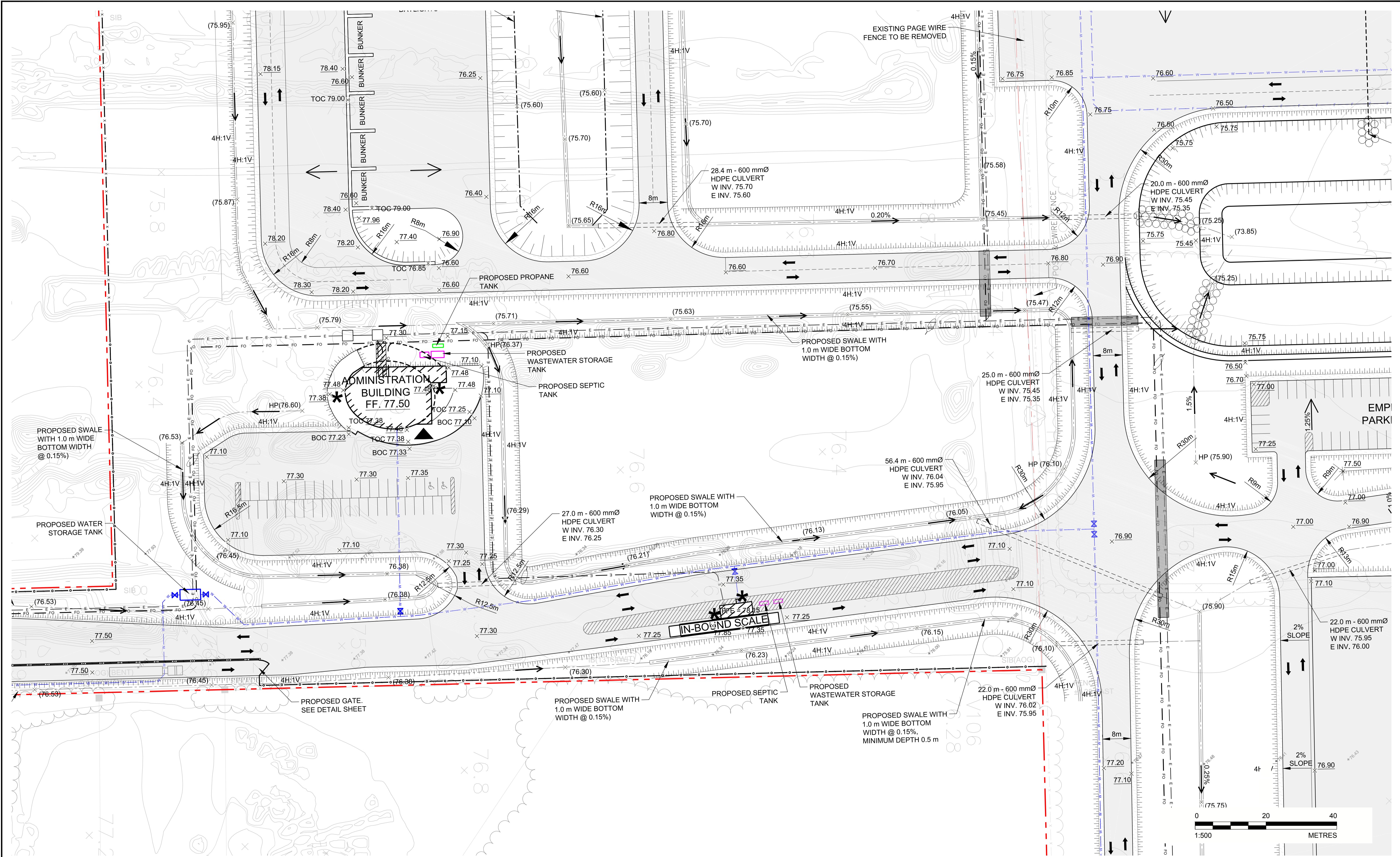


Path: g:\golder\gpc\chatawa\active\spatial\miller_paving\ltd\crrrc\acad\1787048\006\PROC\0006_Schem_Ceading_Plan1.dwg | Last Edited By: zsaava Date: 2018-06-14 Time: 2:42:42 PM | Printed By: zsaava Date: 2018-06-14 Time: 2:59:09 PM



SEAL



CLIENT
TAGGART MILLER ENVIRONMENTAL SERVICES



GOLDER ASSOCIATES LTD.
1931 ROBERSON ROAD
OTTAWA, ONTARIO
CANADA
[+1] (613) 592 9600
www.golder.com

PROJECT
CAPITAL REGION RESOURCE RECOVERY CENTRE

TITLE
GRADING AND DRAINAGE PLAN

1	2018-06-15	ISSUED FOR SITE PLAN APPROVAL	MHK	MLF	MHK	DVK
REV.	YYYY-MM-DD	DESCRIPTION	DESIGNED	PREPARED	REVIEWED	APPROVED

PROJECT NO.	CONTROL	REV.	of	DRAWING
1787048	0006	1		C07

IF THIS MEASUREMENT DOES NOT MATCH WHAT IS SHOWN, THE SHEET SIZE HAS BEEN MODIFIED FROM: ANSI D 25 mm