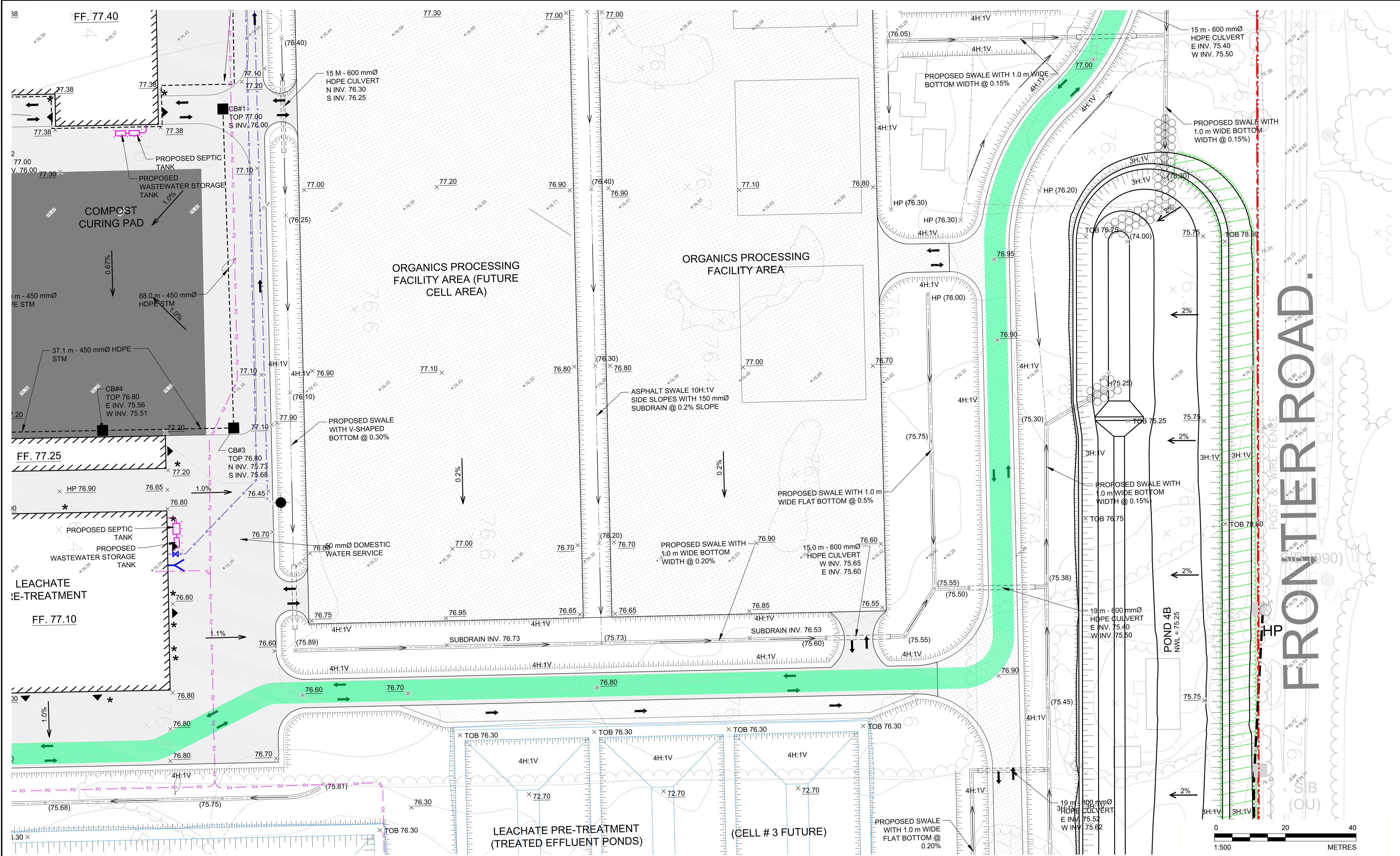


Path: \\golder\gpc\chattwa\active\spatial\miller_paving_ldr\CRRCACAD\1787048_0005_Schem_Ceading_Plan.dwg | Last Edited By: zsavau Date: 2018-12-17 Time: 1:38:47 PM | Printed By: zsavau Date: 2018-12-17 Time: 3:04:29 PM



REV.	YYYY-MM-DD	DESCRIPTION	DESIGNED	PREPARED	REVIEWED	APPROVED
2	2018-12-14	REVISED FOR SITE PLAN APPROVAL	MHK	MLF	DVK	DVK
1	2018-06-15	ISSUED FOR SITE PLAN APPROVAL	MHK	MLF	DVK	DVK

SEAL

CLIENT
TAGGART MILLER ENVIRONMENTAL SERVICES

CONSULTANT

GOLDER ASSOCIATES LTD.
1931 ROBERSON ROAD
OTTAWA, ONTARIO
CANADA
[+1] (613) 592 9600
www.golder.com



PROJECT
CAPITAL REGION RESOURCE RECOVERY CENTRE

TITLE
GRADING AND DRAINAGE PLAN

PROJECT NO.
1787048

CONTROL
0006

REV. of DRAWING
2 of C11