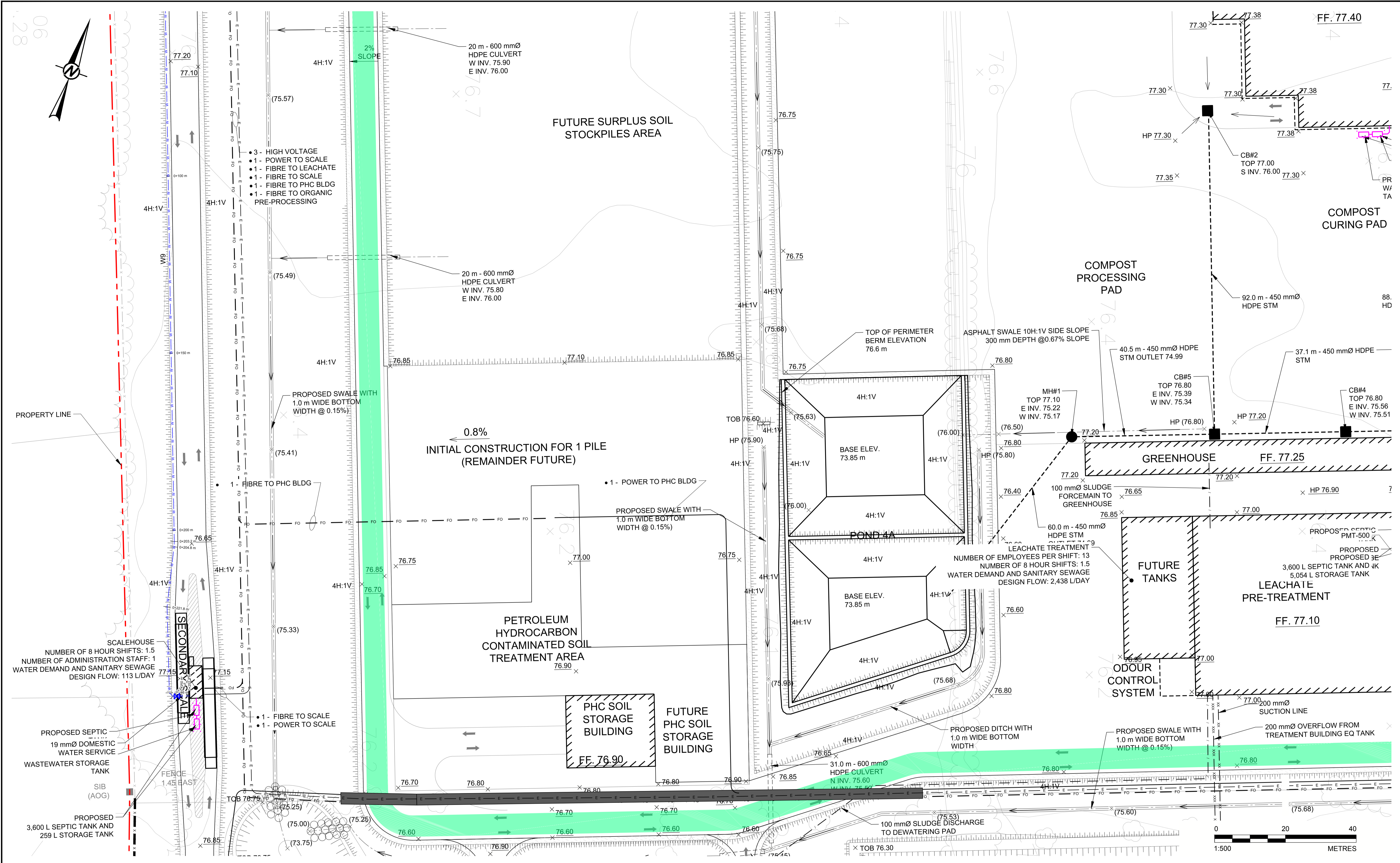
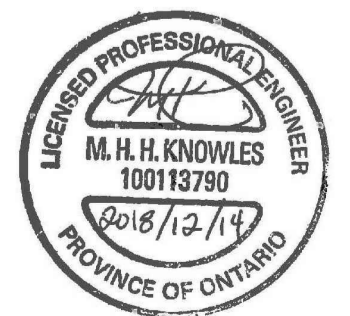


Path: g:\golder\gpc\chawna\active\spatial\mml\miller_paving\ltd\CRRC\ACAD\1787048_007_CIV_003.dwg | Last Edited By: zsave Date: 2018-12-17 Time: 3:42:33 PM | Printed By: zsave Date: 2018-12-17 Time: 3:52:15 PM



SEAL	CLIENT TAGGART MILLER ENVIRONMENTAL SERVICES	PROJECT CAPITAL REGION RESOURCE RECOVERY CENTRE
	CONSULTANT GOLDER	TITLE SITE SERVICING PLAN
	GOLDER ASSOCIATES LTD. 1931 ROBERSON ROAD OTTAWA, ONTARIO CANADA [+1] (613) 592 9600 www.golder.com	PROJECT NO. 1787048
		CONTROL 0007
		REV. of DRAWING 2 of C23



IF THIS MEASUREMENT DOES NOT MATCH WHAT IS SHOWN, THE SHEET SIZE HAS BEEN MODIFIED FROM: ANSI D