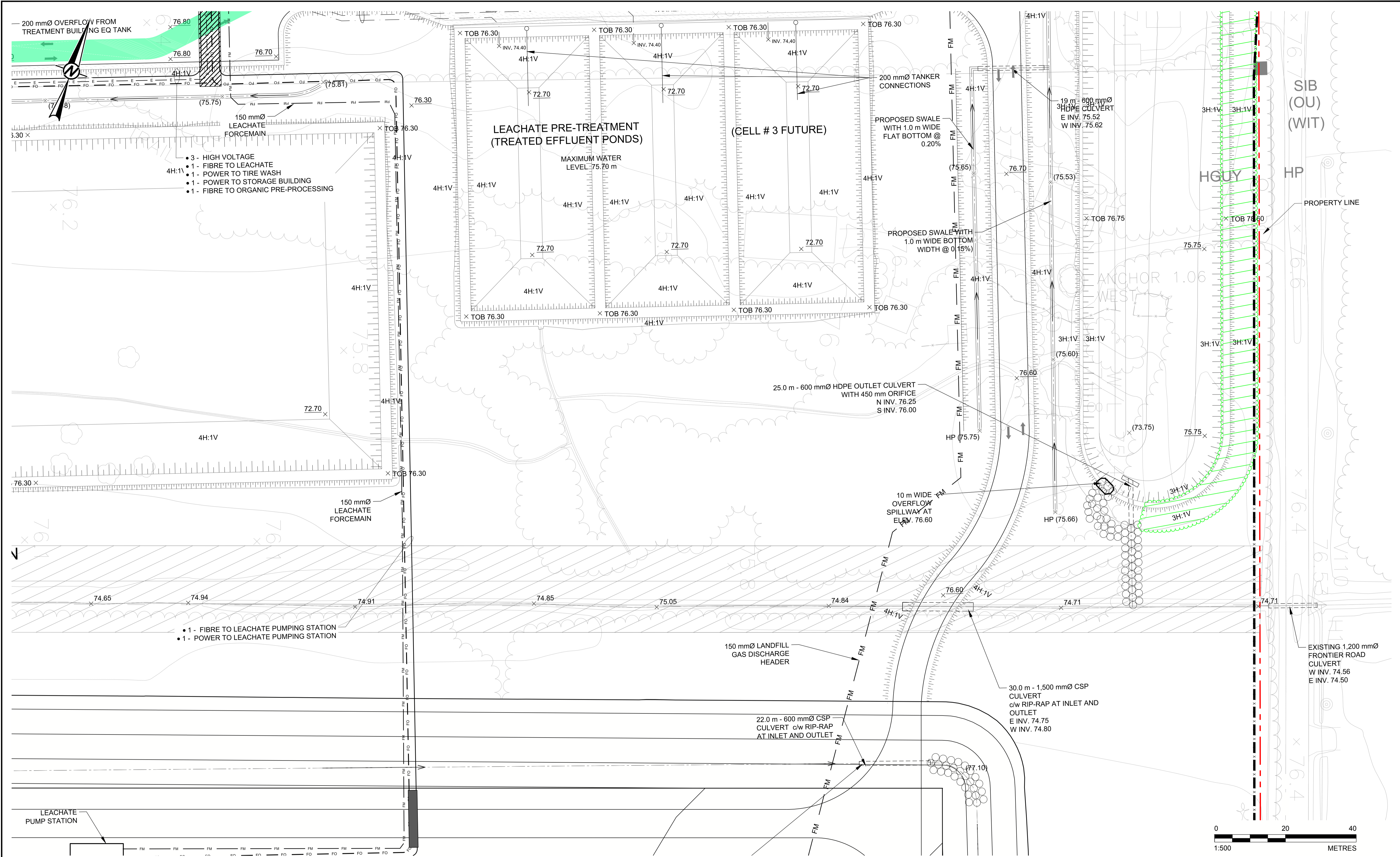
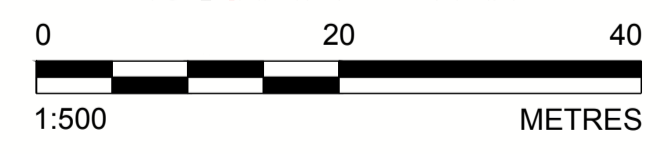


Path: \\golder\gpc\chawna\active\spatial\mml\miller_paving\ltd\CRRC\ACAD\1787048\PROJ\0007_Servicing_Plan.dwg | Last Edited By: zsaave Date: 2018-12-17 Time: 3:53:25 PM
 File Name: 1787048-0007_CIV-0003.dwg | Last Edited By: zsaave Date: 2018-12-17 Time: 3:42:33 PM | Printed By: ZSavage Date: 2018-12-17 Time: 3:53:25 PM



- 3 - HIGH VOLTAGE
- 1 - FIBRE TO LEACHATE
- 1 - POWER TO TIRE WASH
- 1 - POWER TO STORAGE BUILDING
- 1 - FIBRE TO ORGANIC PRE-PROCESSING

- 1 - FIBRE TO LEACHATE PUMPING STATION
- 1 - POWER TO LEACHATE PUMPING STATION



| REV. | YYYY-MM-DD | DESCRIPTION | DESIGNED | PREPARED | REVIEWED | APPROVED |
|------|------------|--------------------------------|----------|----------|----------|----------|
| 2 | 2018-12-14 | REVISED FOR SITE PLAN APPROVAL | MHK | MLF | DVK | DVK |
| 1 | 2018-06-15 | ISSUED FOR SITE PLAN APPROVAL | MHK | MLF | DVK | DVK |

SEAL

CLIENT
TAGGART MILLER ENVIRONMENTAL SERVICES

PROJECT
CAPITAL REGION RESOURCE RECOVERY CENTRE

CONSULTANT
GOLDER

GOLDER ASSOCIATES LTD.
1931 ROBERSON ROAD
OTTAWA, ONTARIO
CANADA
[+1] (613) 592 9600
www.golder.com

TITLE
SITE SERVICING PLAN

PROJECT NO. 1787048 CONTROL 0007 REV. 2 of DRAWING C26



IF THIS MEASUREMENT DOES NOT MATCH WHAT IS SHOWN, THE SHEET SIZE HAS BEEN MODIFIED FROM: ANSI D 25 mm