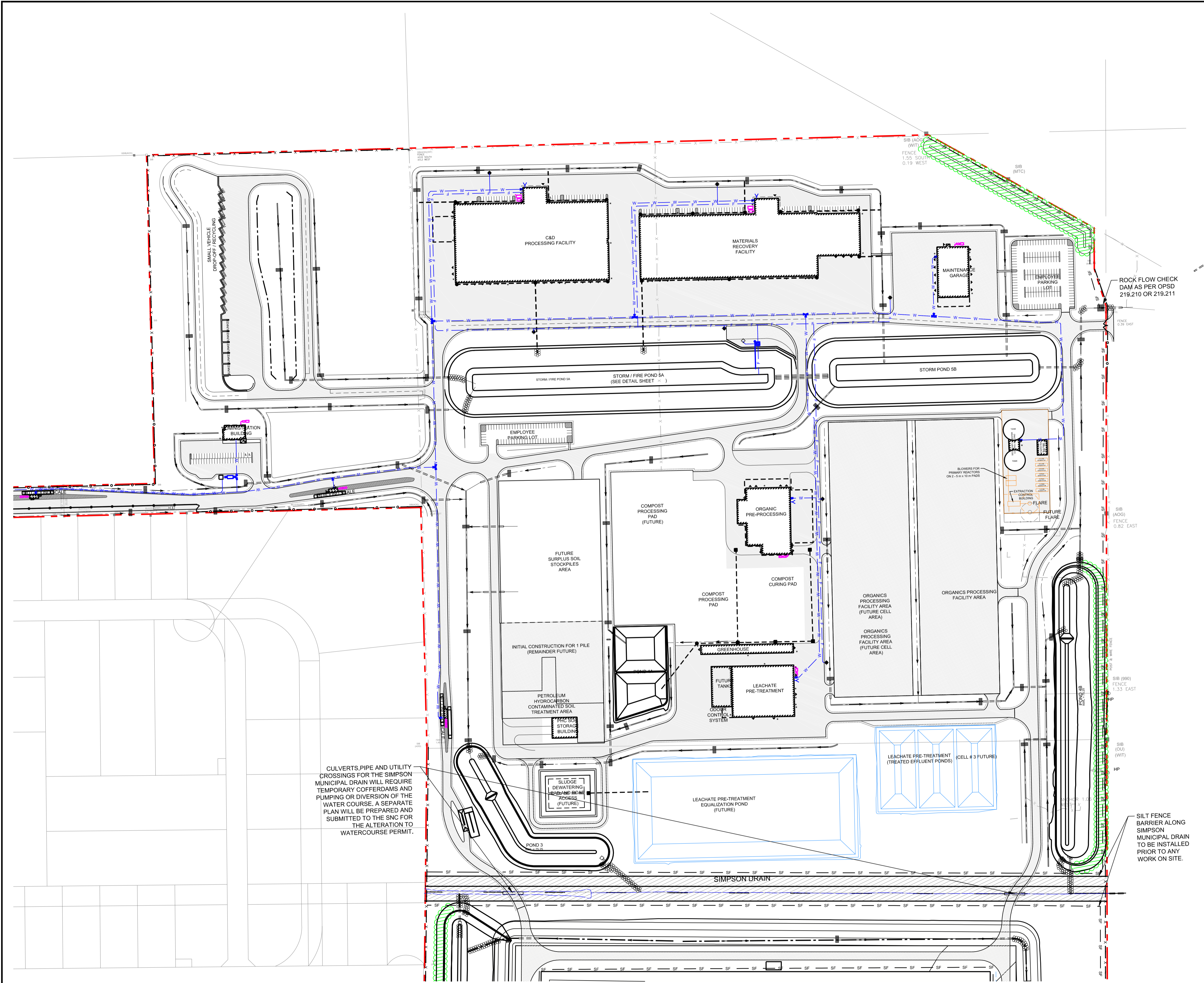


Path: g:\golder\gpc\chawna\active\spatial\mm\miller_paving\lbc\rrrc\rrc\cad\1787048_0007_CW-0004.dwg | Last Edited By: mlogat | Printed By: mlogat | Date: 2018-12-17 Time: 12:32:58 PM



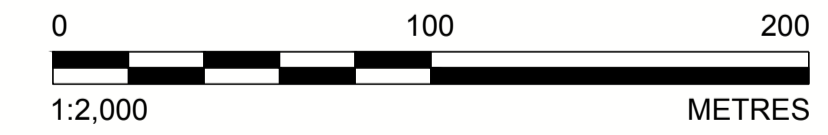
LEGEND

- PROPERTY BOUNDARY
- EXISTING CONTOUR (0.25 m INTERVAL)
- TERRACING (SLOPE AS INDICATED)
- RIP-RAP 200 mmØ, 300 M THICK (NOMINAL) AS PER OPSD 810.010 TYPE 'B'
- DITCH
- 600 mmØ CULVERT OR AS NOTED
- EXISTING CULVERT AS NOTED
- PROPOSED SILT FENCE BARRIER AS PER OPSD 219.110
- STORM SEWER LOCATION
- CATCH BASIN (OPSD 705.010 C/W 600 mm SUMP)
- MAINTENANCE HOLE (OPSD 707.020)
- PROPOSED STRAW BALE FLOW CHECK DAM AS PER OPSD 219.180

- NOTE(S)**
1. EROSION AND SEDIMENT CONTROL (ESC) MEASURES WILL BE IMPLEMENTED PRIOR TO, AND MAINTAINED DURING THE CONSTRUCTION PHASES, TO PREVENT ENTRY OF SEDIMENT INTO THE WATER. INSPECT ALL ESC MEASURES DAILY AND AFTER RAINFALL EVENTS OF 5 MM OR MORE. REMOVE SEDIMENT BUILD-UP AT ESC MEASURES WHEN IT REACHES A DEPTH OF 300MM, OR HALF THE HEIGHT OF THE ESC MEASURE. ALL DAMAGED EROSION AND SEDIMENT CONTROL MEASURES SHOULD BE REPAIRED AND/OR REPLACED WITHIN 48 HOURS OF THE INSPECTION. DISTURBED AREAS WILL BE MINIMIZED TO THE EXTENT POSSIBLE, AND TEMPORARILY OR PERMANENTLY STABILIZED OR RESTORED AS THE WORK PROGRESSES.
 2. ALL IN-WATER AND NEAR WATER WORKS WILL BE CONDUCTED IN THE DRY WITH APPROPRIATE EROSION AND SEDIMENT CONTROLS.
 3. SEDIMENT TRACKED ONTO OFFSITE STREETS WILL BE REMOVED WEEKLY AT A MINIMUM, OR AS NEEDED.
 4. SOIL STOCKPILE LOCATIONS TO BE DETERMINED BY THE CONTRACTOR. SILT FENCING TO BE INSTALLED AROUND STOCKPILES. UNLOADING OF MATERIALS AND SOIL STOCKPILES TO BE AT LEAST 30 M FROM ESC MEASURES, DITCHES, DRAINS AND WATERCOURSES. ANY SOIL STOCKPILES THAT ARE LEFT IN PLACE FOR PROLONGED PERIODS OF TIME WILL BE SEEDED TO ESTABLISH VEGETATION.
 5. THE LOCATION OF ALL ESC MEASURES ARE APPROXIMATE AND SHALL BE DETERMINED IN THE FIELD BASED ON SITE FEATURES. THE EROSION AND SEDIMENT CONTROL STRATEGIES OUTLINED ON THE PLANS ARE NOT STATIC AND MAY NEED TO UPGRADE/AMENDED AS SITE CONDITIONS CHANGE TO MINIMIZE SEDIMENT LADEN RUNOFF FROM LEAVING THE WORK AREAS. IF THE PRESCRIBED MEASURES ON THE PLANS ARE NOT EFFECTIVE IN PREVENTING THE RELEASE OF A DELETERIOUS SUBSTANCE, INCLUDING SEDIMENT, THEN ALTERNATIVE MEASURES MUST BE IMPLEMENTED IMMEDIATELY TO MINIMIZE POTENTIAL ECOLOGICAL IMPACTS. THE CONSERVATION AUTHORITY ENFORCEMENT OFFICER SHOULD BE IMMEDIATELY CONTACTED IN THE EVENT OF A RELEASE FROM THE WORK AREA. ADDITIONAL ESC MEASURES ARE TO BE KEPT ON SITE AND USED AS NECESSARY.
 6. AN ENVIRONMENTAL MONITOR WILL ATTEND THE SITE TO INSPECT ALL NEW CONTROLS, AS WELL AS ON A REGULAR BASIS, OR FOLLOWING RAIN/SNOWMELT EVENT, TO MONITOR ALL WORKS, AND IN PARTICULAR WORKS RELATED TO EROSION AND SEDIMENT CONTROLS, DEWATERING OR UNWATERING, RESTORATION AND IN- OR NEAR- WATER WORKS. SHOULD CONCERNS ARISE ON SITE THE ENVIRONMENTAL MONITOR WILL CONTACT THE CONSERVATION AUTHORITY ENFORCEMENT OFFICER AS WELL AS THE PROPONENT.
 7. ALL ACTIVITIES, INCLUDING MAINTENANCE PROCEDURES, WILL BE CONTROLLED TO PREVENT THE ENTRY OF PETROLEUM PRODUCTS, DEBRIS, RUBBLE, CONCRETE OR OTHER DELETERIOUS SUBSTANCES INTO THE WATER. VEHICULAR REFUELING AND MAINTENANCE WILL BE CONDUCTED A MINIMUM OF 30 METRES FROM THE DITCHES, DRAINS AND WATERCOURSES.
 8. THE EXISTING VEGETATION COVER SHALL BE REMOVED PROGRESSIVELY IN SEQUENCE WITH THE SITE DEVELOPMENT TO MINIMIZE THE AREA OF REMOVED VEGETATION DURING CONSTRUCTION. THE PROPONENT/CONTRACTOR SHALL MONITOR THE WEATHER SEVERAL DAYS IN ADVANCE OF THE ONSET OF THE PROJECT TO ENSURE THAT THE WORKS WILL BE CONDUCTED DURING FAVOURABLE WEATHER CONDITIONS. ALL WORK ALONG THE SIMPSON MUNICIPAL DRAIN AND EXISTING DRAIN OUTLETS TO BE PERFORMED DURING DRY CONDITIONS.
 9. ALL DEWATERING/UNWATERING SHALL BE PUMPED TO A SILTATION BAG OR SEDIMENT TRAP AS PER OPSD 219.240 AND RELEASED TO THE ENVIRONMENT AT LEAST 30 METRES FROM A WATERCOURSE OR WETLAND AND ALLOWED TO DRAIN THROUGH A WELL-VEGETATED AREA. NO DEWATERING EFFLUENT SHALL BE SENT DIRECTLY TO ANY WATERCOURSE, WETLAND OR FOREST, OR ALLOWED TO DRAIN ONTO DISTURBED SOILS WITHIN THE WORK AREA. THESE CONTROL MEASURES SHALL BE MONITORED FOR EFFECTIVENESS AND MAINTAINED OR REVISED TO MEET THE OBJECTIVE OF PREVENTING THE RELEASE OF SEDIMENT LADEN WATER.
 10. ALL CATCHBASINS AND MAINTENANCE HOLES WILL BE TEMPORARILY PROTECTED BY BERMS AND/OR SILT BAGS TO CONTROL THE AMOUNT OF SEDIMENTS ENTERING THE STORM SEWERS.
 11. ALL ESC MEASURES ARE TO BE REMOVED FOLLOWING THE MAINTENANCE PERIOD AND ANY DISTURBED AREAS REINSTATED. REMOVE SEDIMENT BUILD-UP PRIOR TO THE REMOVAL OF THE ESC MEASURE.

CULVERTS, PIPE AND UTILITY CROSSINGS FOR THE SIMPSON MUNICIPAL DRAIN WILL REQUIRE TEMPORARY COFFERDAMS AND PUMPING OR DIVERSION OF THE WATER COURSE. A SEPARATE PLAN WILL BE PREPARED AND SUBMITTED TO THE SNC FOR THE ALTERATION TO WATERCOURSE PERMIT.

SILT FENCE BARRIER ALONG SIMPSON MUNICIPAL DRAIN TO BE INSTALLED PRIOR TO ANY WORK ON SITE.



REV.	YYYY-MM-DD	DESCRIPTION	DESIGNED	PREPARED	REVIEWED	APPROVED
2	2018-12-14	REVISED FOR SITE PLAN APPROVAL	MHK	MLF	DVK	DVK
1	2018-06-15	ISSUED FOR SITE PLAN APPROVAL	MHK	MLF	DVK	DVK

SEAL

CLIENT
TAGGART MILLER ENVIRONMENTAL SERVICES

CONSULTANT

GOLDER

GOLDER ASSOCIATES LTD.
1931 ROBERSON ROAD
OTTAWA, ONTARIO
CANADA
[+1] (613) 592 9600
www.golder.com

PROJECT
CAPITAL REGION RESOURCE RECOVERY CENTRE

TITLE
EROSION AND SEDIMENT CONTROL PLAN

PROJECT NO. 1787048 CONTROL 0007 REV. 2 of DRAWING EC1

IF THIS MEASUREMENT DOES NOT MATCH WHAT IS SHOWN, THE SHEET SIZE HAS BEEN MODIFIED FROM: ANSI D 25 mm