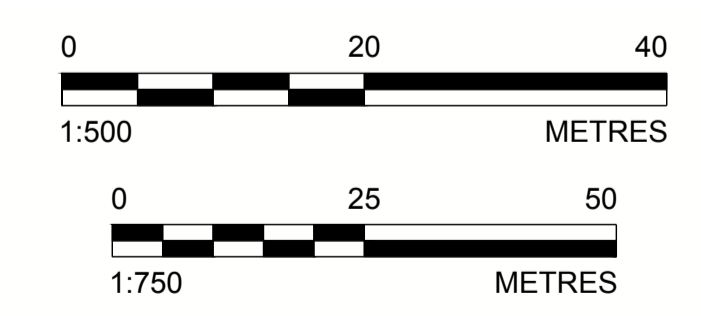
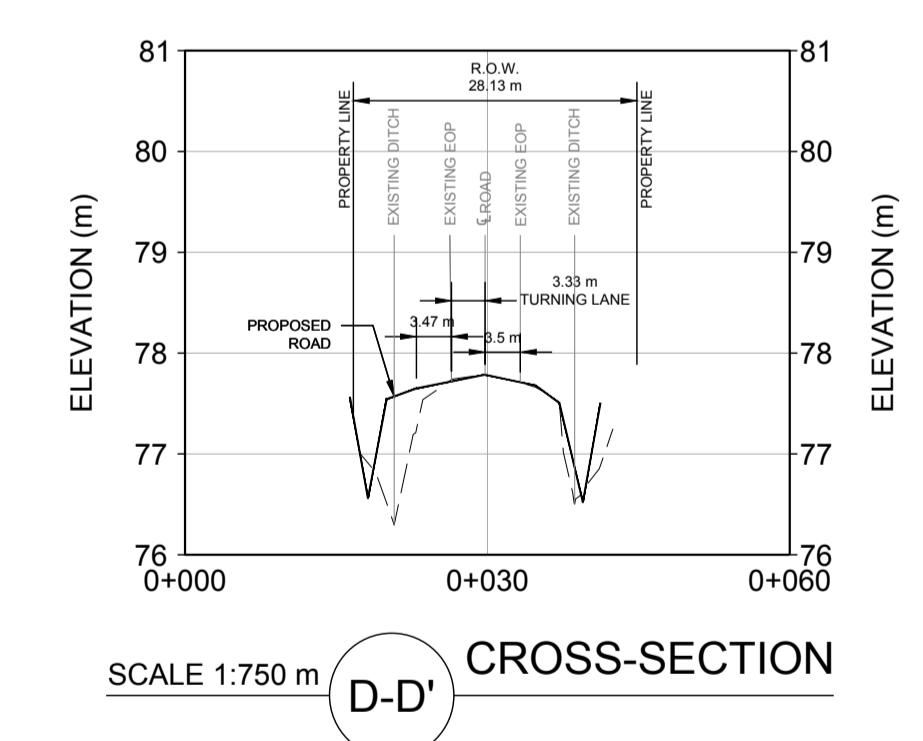
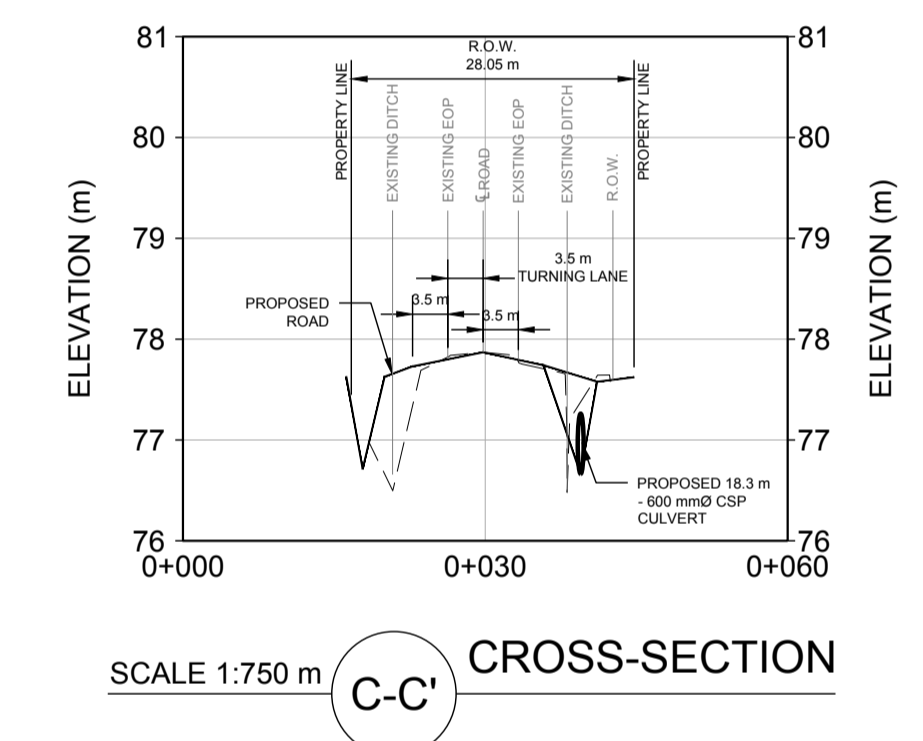
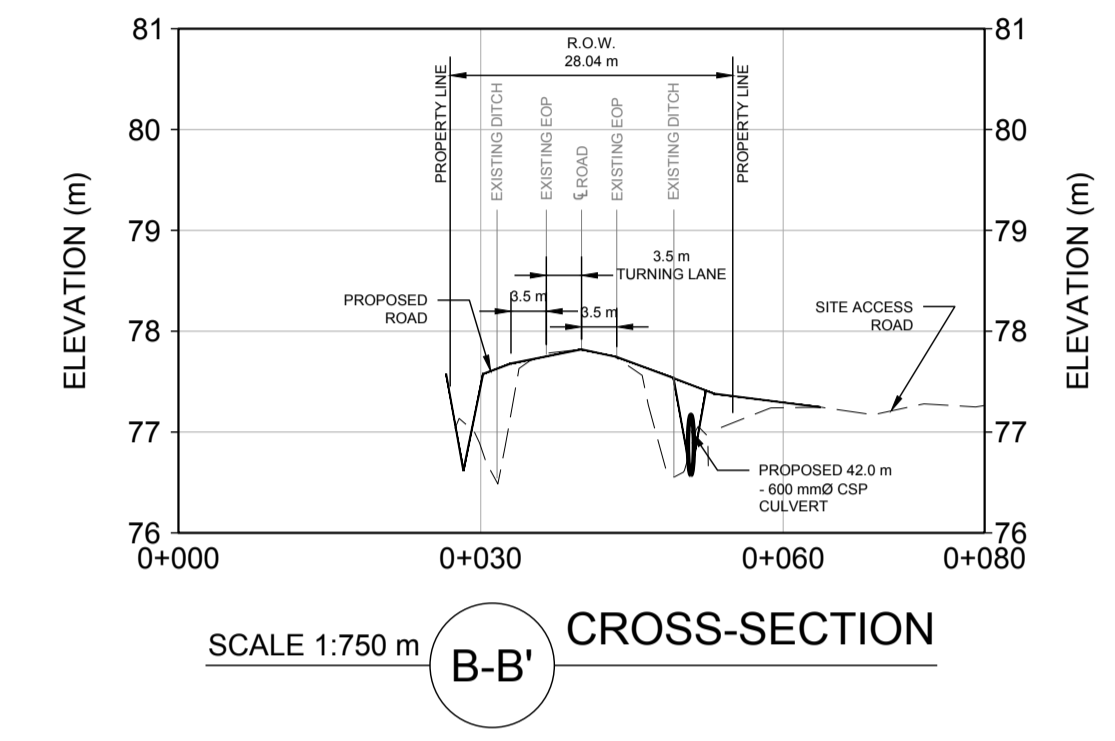
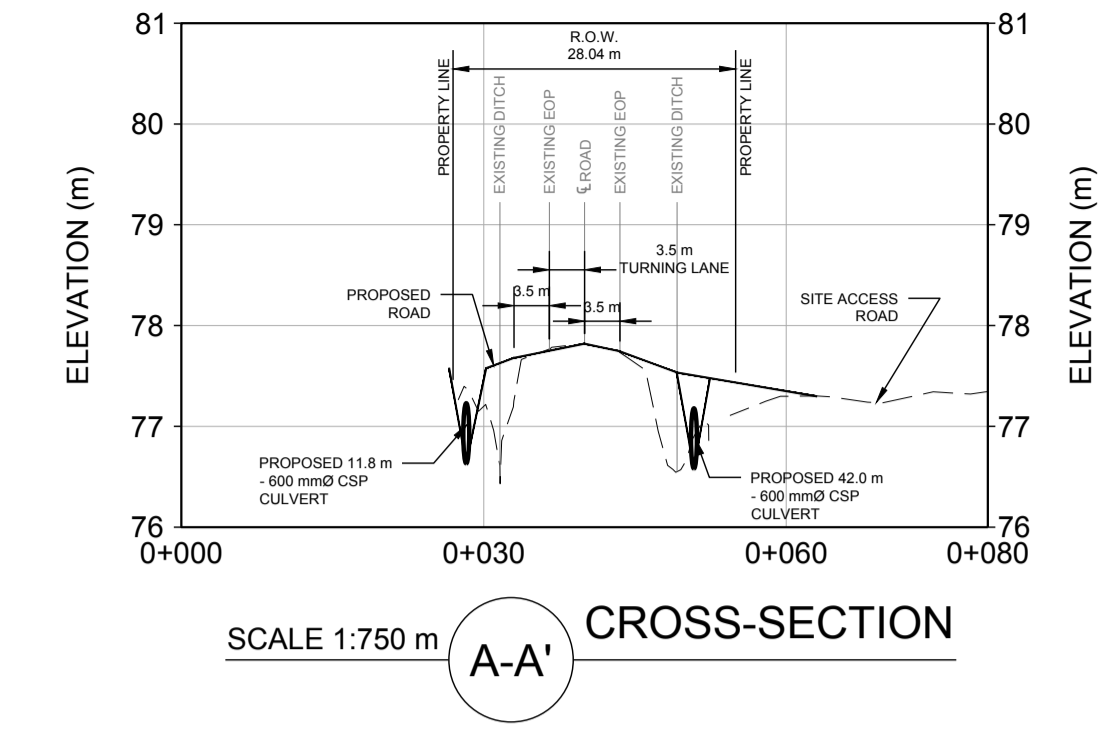
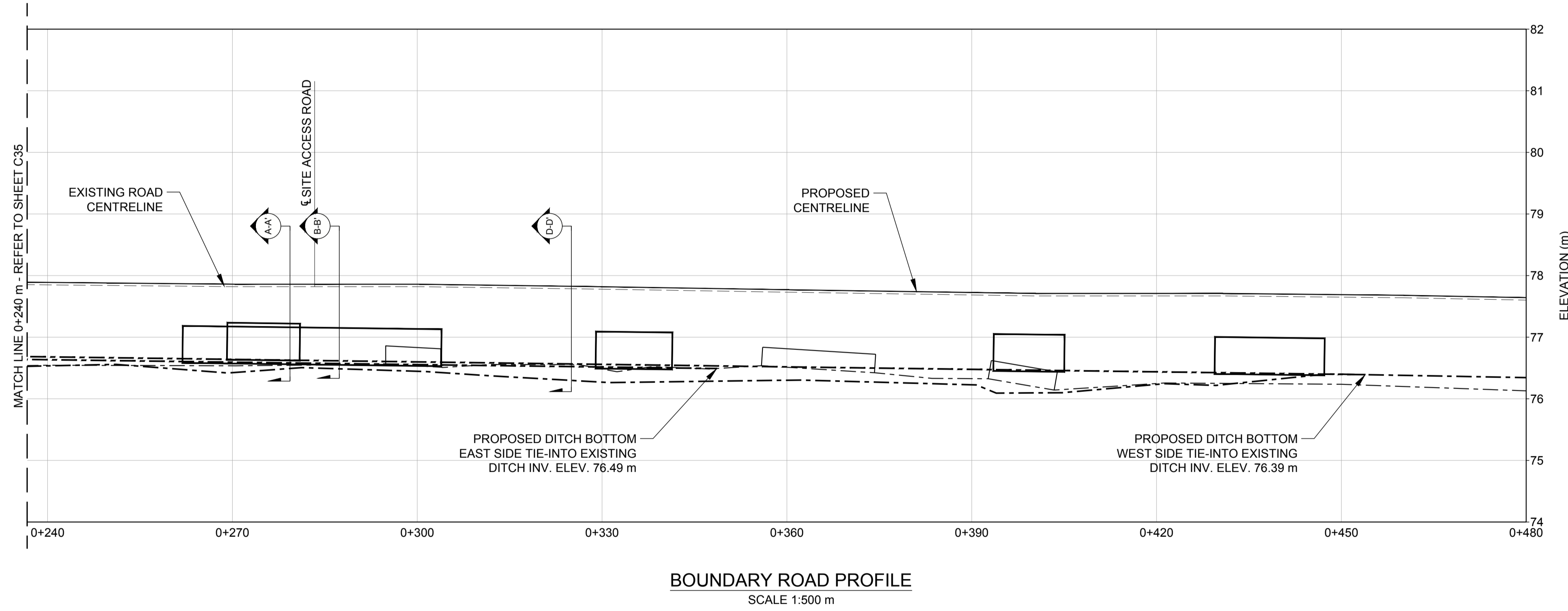
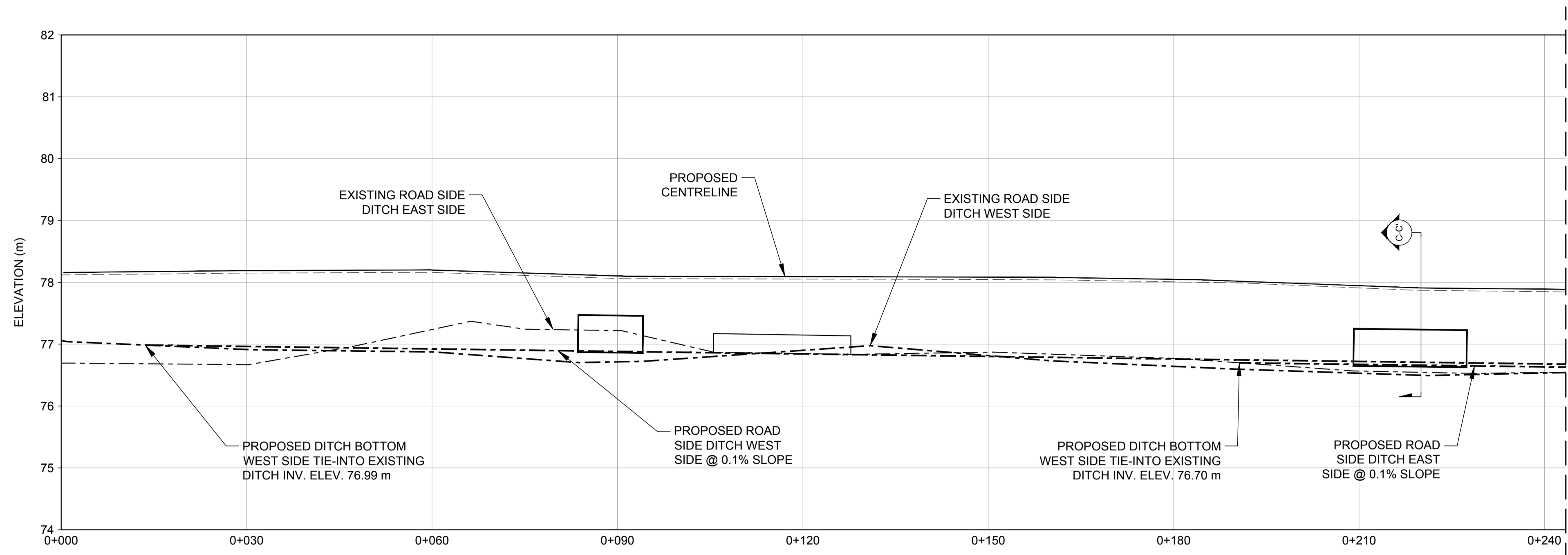


Path: g:\golder\gpc\gpc\active\active\spatial\miller\_paving\ltd\crrrc\cadd\1787048\_005\civ\004.dwg | File Name: 1787048-005-CIV-004.dwg | Last Edited By: mfergat | Date: 2018-06-14 | Time: 3:59:33 PM



SEAL



CLIENT  
TAGGART MILLER ENVIRONMENTAL SERVICES



GOLDER ASSOCIATES LTD.  
1931 ROBERSON ROAD  
OTTAWA, ONTARIO  
CANADA  
[+1] (613) 592 9600  
www.golder.com

PROJECT  
CAPITAL REGION RESOURCE RECOVERY CENTRE

TITLE  
BOUNDARY ROAD PROFILE AND SECTIONS

1	2018-06-15	ISSUED FOR SITE PLAN APPROVAL	MHK	MLF	DVK	DVK
REV.	YYYY-MM-DD	DESCRIPTION	DESIGNED	PREPARED	REVIEWED	APPROVED

PROJECT NO.	CONTROL	REV.	of	DRAWING
1787048	0005	---		C35

IF THIS MEASUREMENT DOES NOT MATCH WHAT IS SHOWN, THE SHEET SIZE HAS BEEN MODIFIED FROM: ANSI D 25 mm