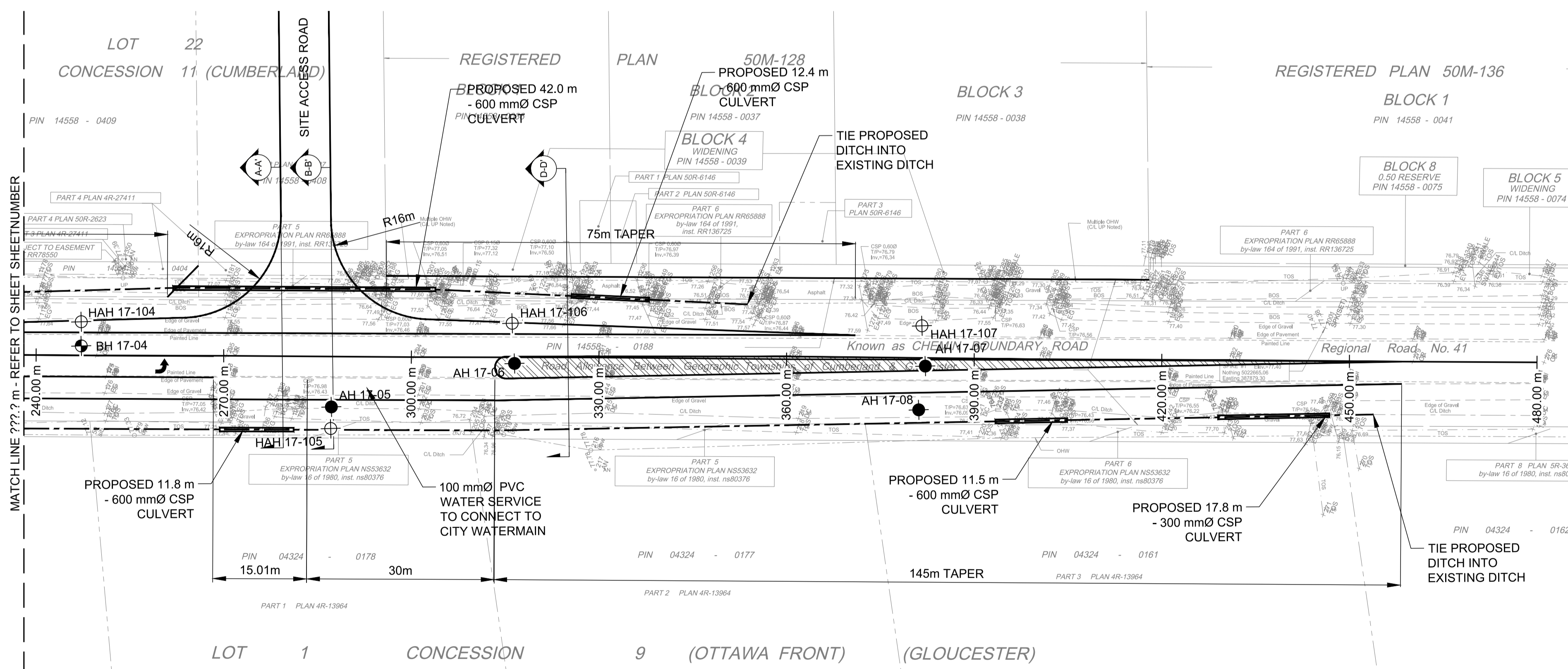


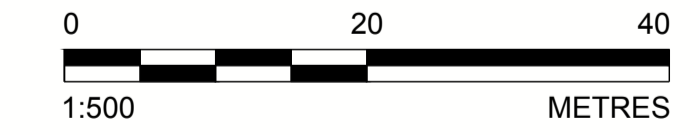
LEGEND

- APPROXIMATE BOREHOLE LOCATION
- APPROXIMATE MANUAL AUGERHOLE LOCATION
- APPROXIMATE AUGERHOLE LOCATION

- REFERENCE(S)**
1. TOPOGRAPHIC SURVEY PROVIDED IN A DIGITAL FORMAT BY ANNIS, O'SULLIVAN, VOLLEBEKK LTD., JOB No. XRF-AOV-2017_Survey_BoundaryRD, FIELD WORK COMPLETED ON November 22, 2017.
 2. PROPOSED BOUNDARY ROAD SITE ACCESS GEOMETRY PROVIDED BY TAGGART GROUP OF COMPANIES, TECHNICAL SUPPORT DOCUMENT #9, TRAFFIC IMPACT STUDY.
 3. COORDINATE SYSTEM, HORIZONTAL DATUM MTM ZN9, VERTICAL DATUM: CGVD28.
 4. GEOTECHNICAL/PAVEMENT INVESTIGATION, PROPOSED BOUNDARY ROAD IMPROVEMENTS, CAPITAL REGION RESOURCE CENTRE (CRRC), GOLDBER ASSOCIATES LTD., DATED APRIL 10, 2018.



PLAN VIEW OF BOUNDARY ROAD ACCESS
SCALE 1:500 m



Path: g:\golder\gpc\gpc\active\Boundary_Road_Access\ I File Name: 1787048-0005-CM-0003.dwg | Last Edited By: mfergat | Date: 2018-06-14 | Time: 3:59:11 PM

REV.	DATE	DESCRIPTION	DESIGNED	PREPARED	REVIEWED	APPROVED
1	2018-06-15	ISSUED FOR SITE PLAN APPROVAL	MHK	MLF	DVK	DVK

SEAL 	CLIENT TAGGART MILLER ENVIRONMENTAL SERVICES CONSULTANT 	PROJECT CAPITAL REGION RESOURCE RECOVERY CENTRE TITLE BOUNDARY ROAD ACCESS PLAN, PROFILE AND SECTIONS PROJECT NO. 1787048 CONTROL 0005 REV. A of DRAWING C34	GOLDER ASSOCIATES LTD. 1931 ROBERSON ROAD OTTAWA, ONTARIO CANADA (+1) (613) 592 9600 www.golder.com
---	---	--	--