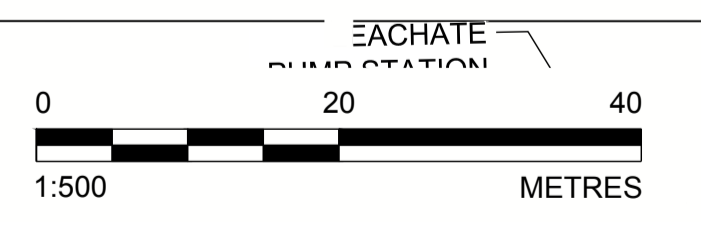
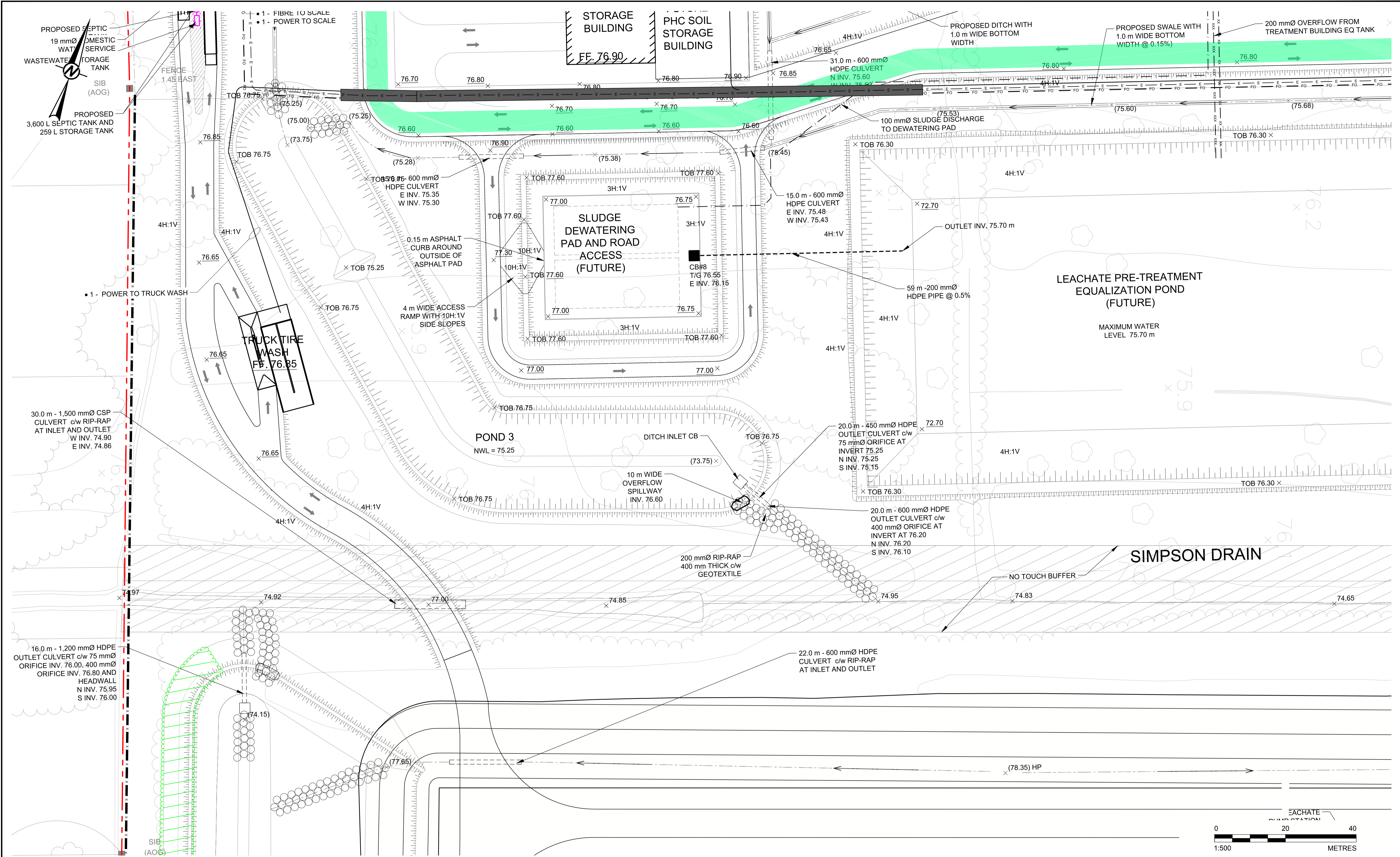


Path: g:\golder\gpc\chawna\active\spatial\mml\miller_paving_ldr\CRRC\CAD\1787048_0007_C25.dwg | Last Edited By: zsave Date: 2018-12-17 Time: 3:53:10 PM
 File Name: 1787048_0007_C25.dwg | Printed By: zsave Date: 2018-12-17 Time: 3:53:10 PM



REV.	YYYY-MM-DD	DESCRIPTION	DESIGNED	PREPARED	REVIEWED	APPROVED
2	2018-12-14	REVISED FOR SITE PLAN APPROVAL	MHK	MLF	DVK	DVK
1	2018-06-15	ISSUED FOR SITE PLAN APPROVAL	MHK	MLF	DVK	DVK

SEAL

 M.H.H. KNOWLES
 100113790
 2018/12/14
 PROVINCE OF ONTARIO

CLIENT
TAGGART MILLER ENVIRONMENTAL SERVICES
 CONSULTANT

GOLDER
 GOLDR ASSOCIATES LTD.
 1931 ROBERSON ROAD
 OTTAWA, ONTARIO
 CANADA
 (+1) (613) 592 9600
 www.golder.com

PROJECT
CAPITAL REGION RESOURCE RECOVERY CENTRE
 TITLE
SITE SERVICING PLAN
 PROJECT NO. 1787048 CONTROL 0007 REV. 2 of DRAWING C25

IF THIS MEASUREMENT DOES NOT MATCH WHAT IS SHOWN, THE SHEET SIZE HAS BEEN MODIFIED FROM: ANSI D