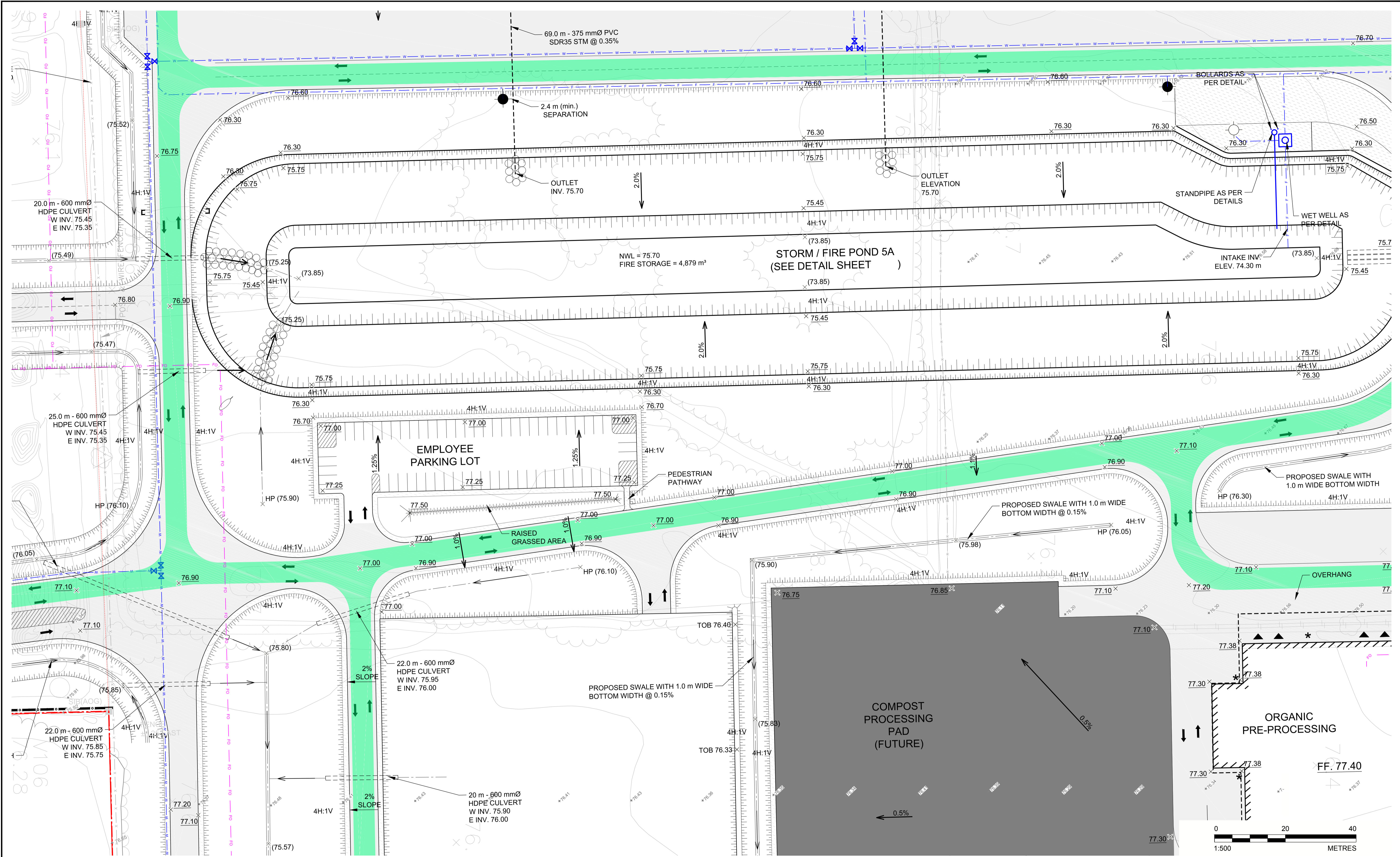


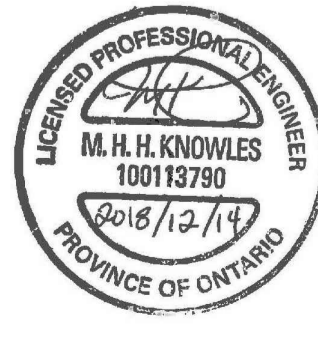
Path: g:\golder\gpc\chateau\active\spatial\miller\_paving\ltd\crrrc\acad\1787048\0\_PROCD0008\_Schem\_Ceading\_Plan1 | File Name: 1787048-0008-CH-0002.dwg | Last Edited By: zsaava | Date: 2018-12-17 Time: 1:38:47 PM | Printed By: zsaava | Date: 2018-12-17 Time: 3:03:00 PM



SEAL

CLIENT  
TAGGART MILLER ENVIRONMENTAL SERVICES

PROJECT  
CAPITAL REGION RESOURCE RECOVERY CENTRE



CONSULTANT



GOLDER ASSOCIATES LTD.  
1931 ROBERSON ROAD  
OTTAWA, ONTARIO  
CANADA  
[+1] (613) 592 9600  
www.golder.com

TITLE

**GRADING AND DRAINAGE PLAN**

PROJECT NO. 1787048	CONTROL 0006	REV. of 2 of	DRAWING C08
------------------------	-----------------	-----------------	----------------

REV.	YYYY-MM-DD	DESCRIPTION	DESIGNED	PREPARED	REVIEWED	APPROVED
2	2018-12-14	REVISED FOR SITE PLAN APPROVAL	MHK	MLF	DVK	DVK
1	2018-06-15	ISSUED FOR SITE PLAN APPROVAL	MHK	MLF	DVK	DVK

IF THIS MEASUREMENT DOES NOT MATCH WHAT IS SHOWN, THE SHEET SIZE HAS BEEN MODIFIED FROM: ANSI D