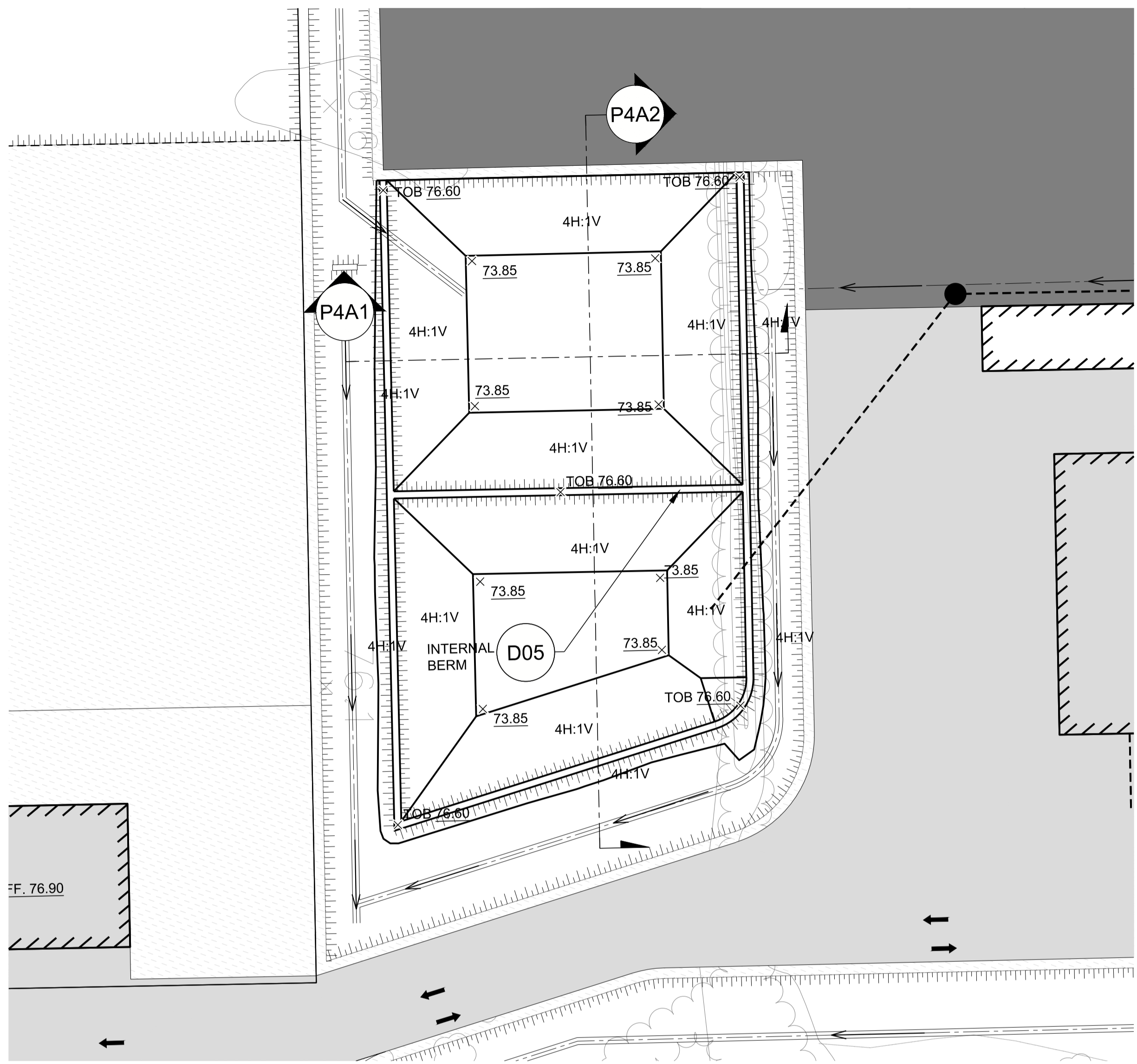
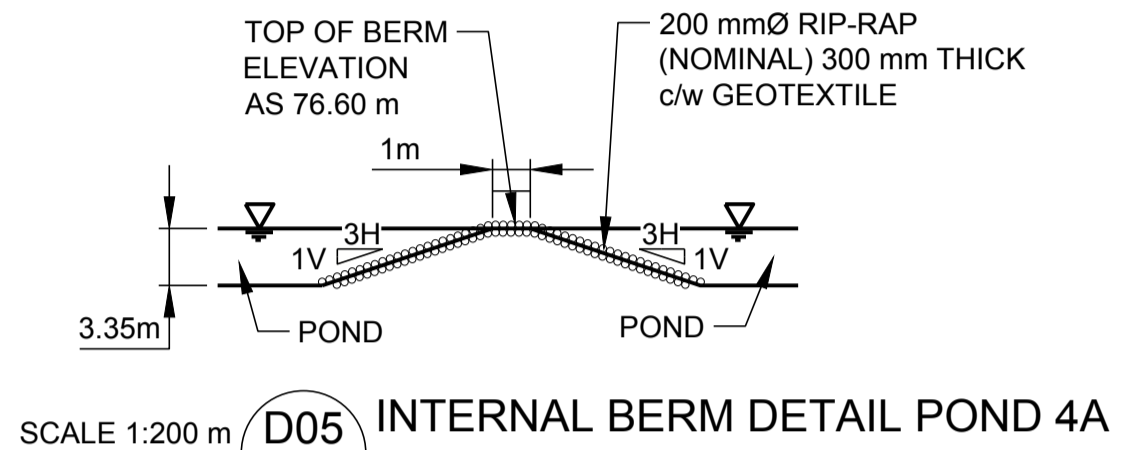


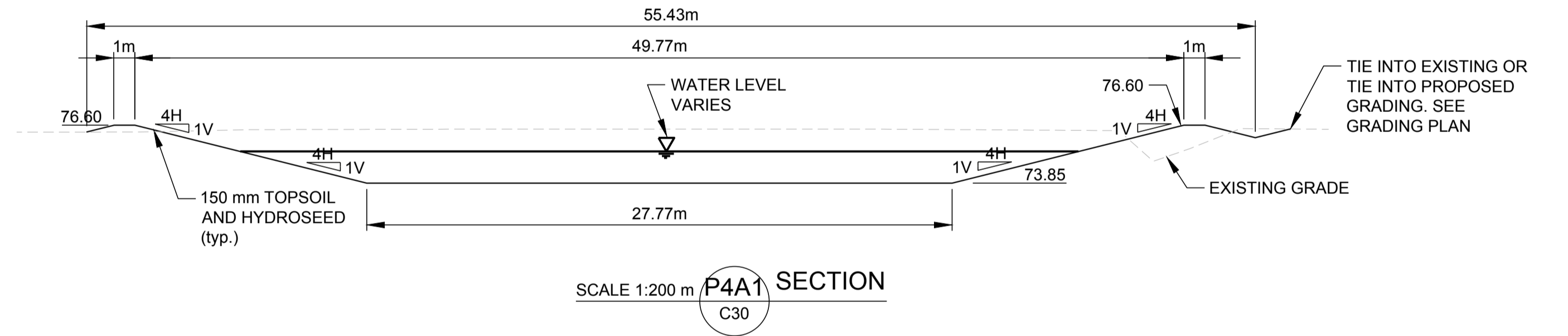
Path: g:\golder\golder\active\spatial\mms\paving\lincrbrcr\cadd\1787048\PROJ\GD08_Schem_Grading_Plan.dwg | File Name: 1787048-0008-CH-0007.dwg | Printed By: rfergall | Date: 2018-12-17 Time: 2:44:31 PM



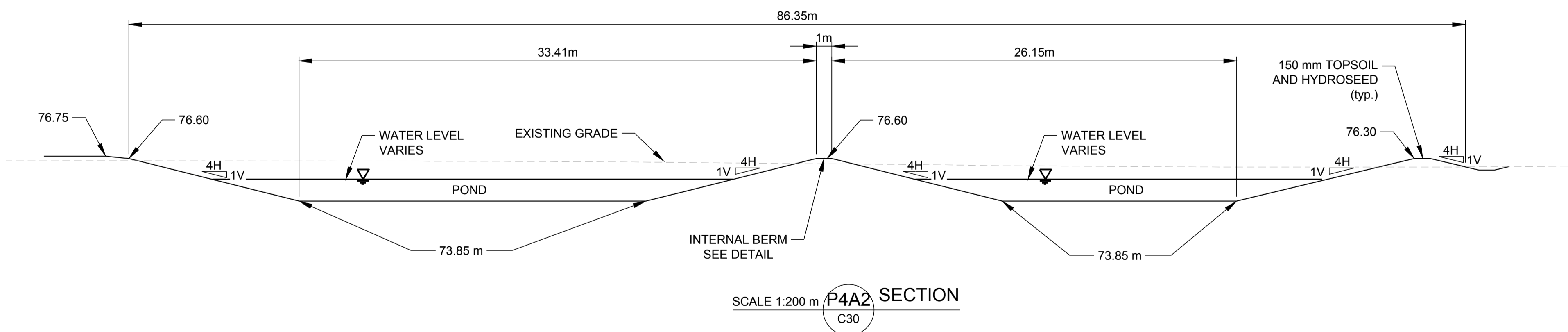
PLAN VIEW OF POND 4A
SCALE 1:500 m



SCALE 1:200 m D05 INTERNAL BERM DETAIL POND 4A
C30



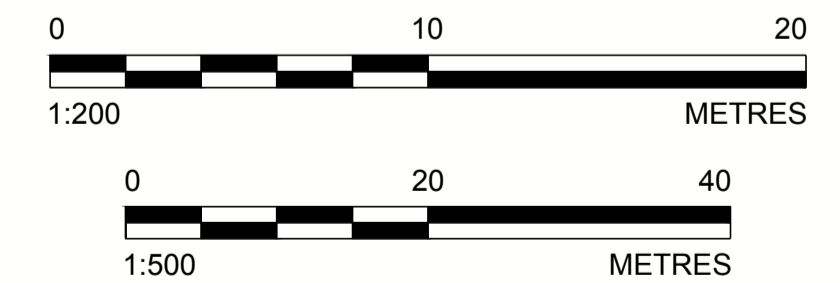
SCALE 1:200 m P4A1 SECTION
C30



SCALE 1:200 m P4A2 SECTION
C30

- LEGEND**
- PROPERTY BOUNDARY
 - x (75.50) PROPOSED SWALE GRADE
 - x 77.25 PROPOSED GRADE
 - x TOB 77.25 PROPOSED TOP OF BERM GRADE
 - H.P. HIGH POINT
 - \leftarrow PROPOSED SURFACE DRAINAGE DIRECTION
 - \bigcirc PROPOSED RIP-RAP (NOMINAL 200 mmØ, 300 mm THICK c/w GEOTEXTILE)
 - x 75.8 EXISTING GRADE
 - - - - - PROPOSED DITCH
 - PROPOSED 600 mmØ CULVERT OR AS NOTED
 - EXISTING CULVERT AS NOTED

- NOTE(S)**
- ALL GRADES ARE METRES ABOVE SEA LEVEL (masl)
 - TO BE READ IN CONJUNCTION WITH GRADING PLAN NO. GD1 TO GD14.



SEAL

CLIENT
TAGGART MILLER ENVIRONMENTAL SERVICES

PROJECT
CAPITAL REGION RESOURCE RECOVERY CENTRE

CONSULTANT



GOLDER ASSOCIATES LTD.
1931 ROBERSON ROAD
OTTAWA, ONTARIO
CANADA
[+1] (613) 592 9600
www.golder.com

TITLE
POND 4a PLAN VIEW AND DETAILS

PROJECT NO. CONTROL REV. of DRAWING
1787048 0006 2 of C30



REV.	YYYY-MM-DD	DESCRIPTION	DESIGNED	PREPARED	REVIEWED	APPROVED
2	2018-12-14	REVISED FOR SITE PLAN APPROVAL	MHK	MLF	DVK	DVK
1	2018-06-15	ISSUED FOR SITE PLAN APPROVAL	MHK	MLF	DVK	DVK

IF THIS MEASUREMENT DOES NOT MATCH WHAT IS SHOWN, THE SHEET SIZE HAS BEEN MODIFIED FROM ANSI D 25 mm