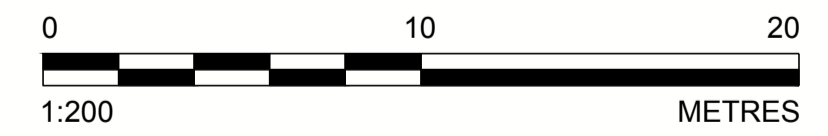
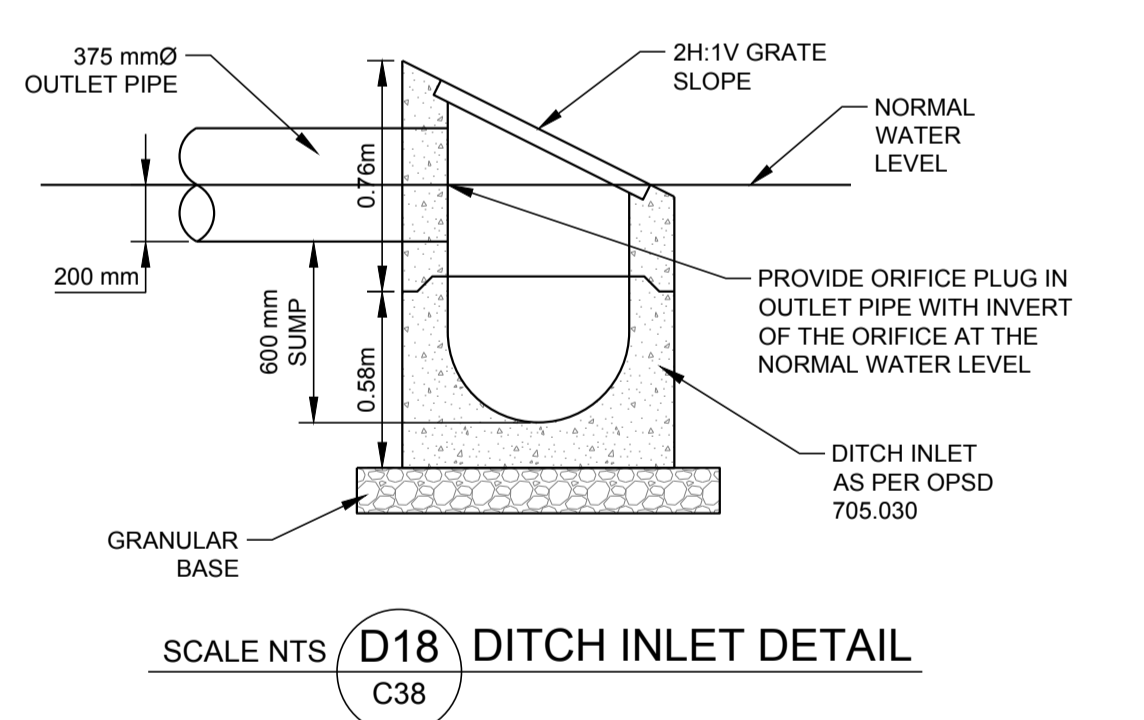
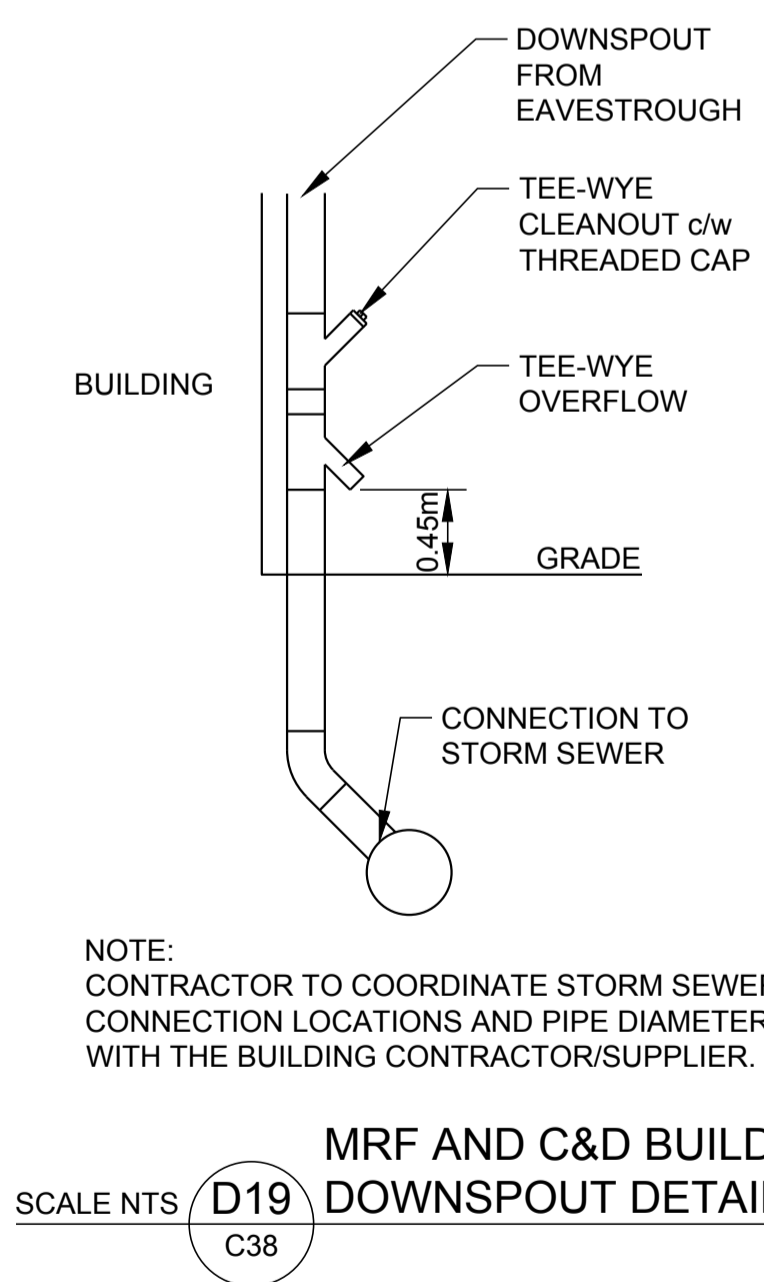
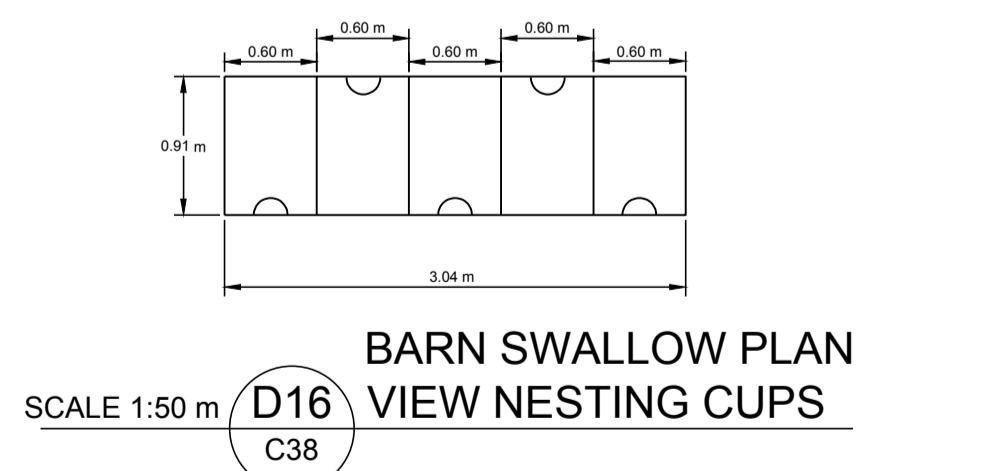
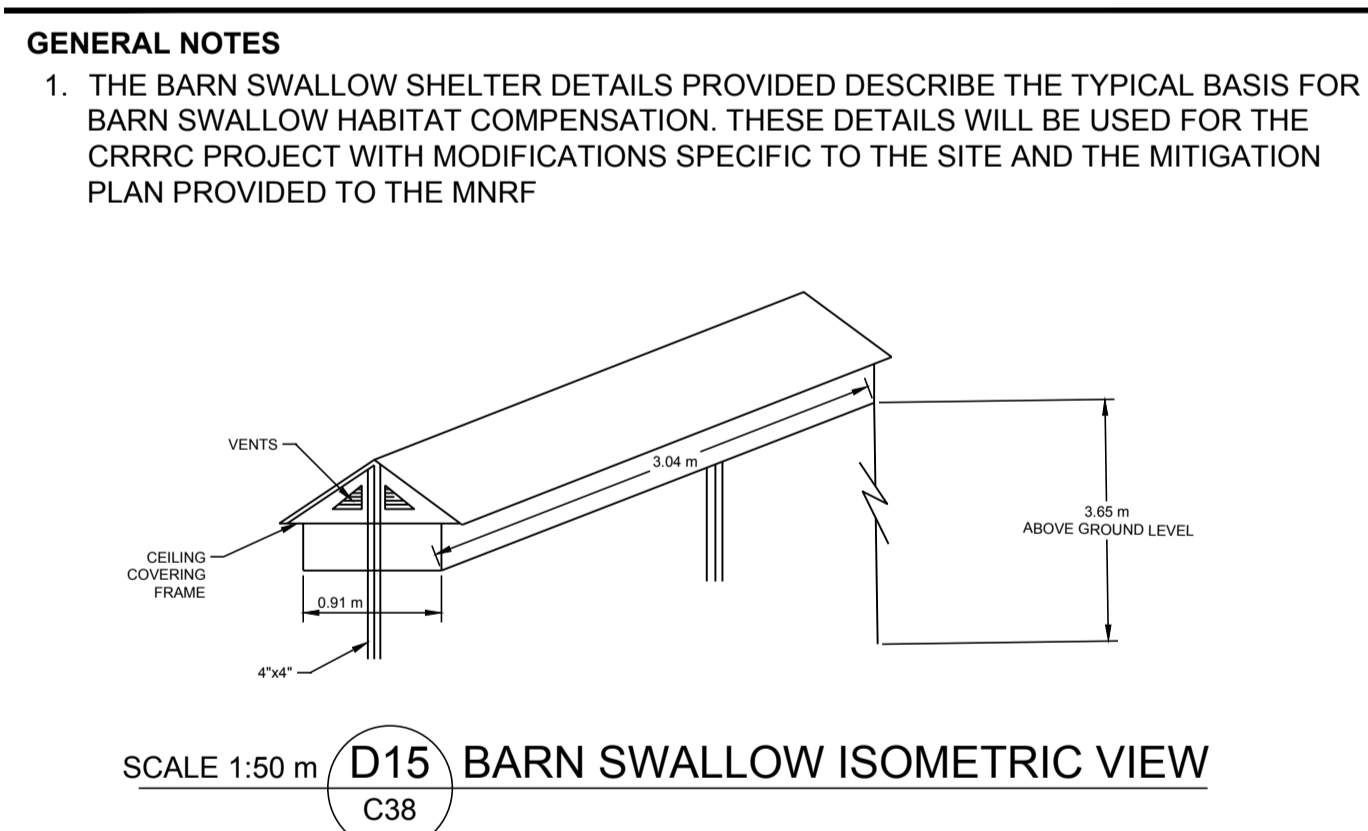
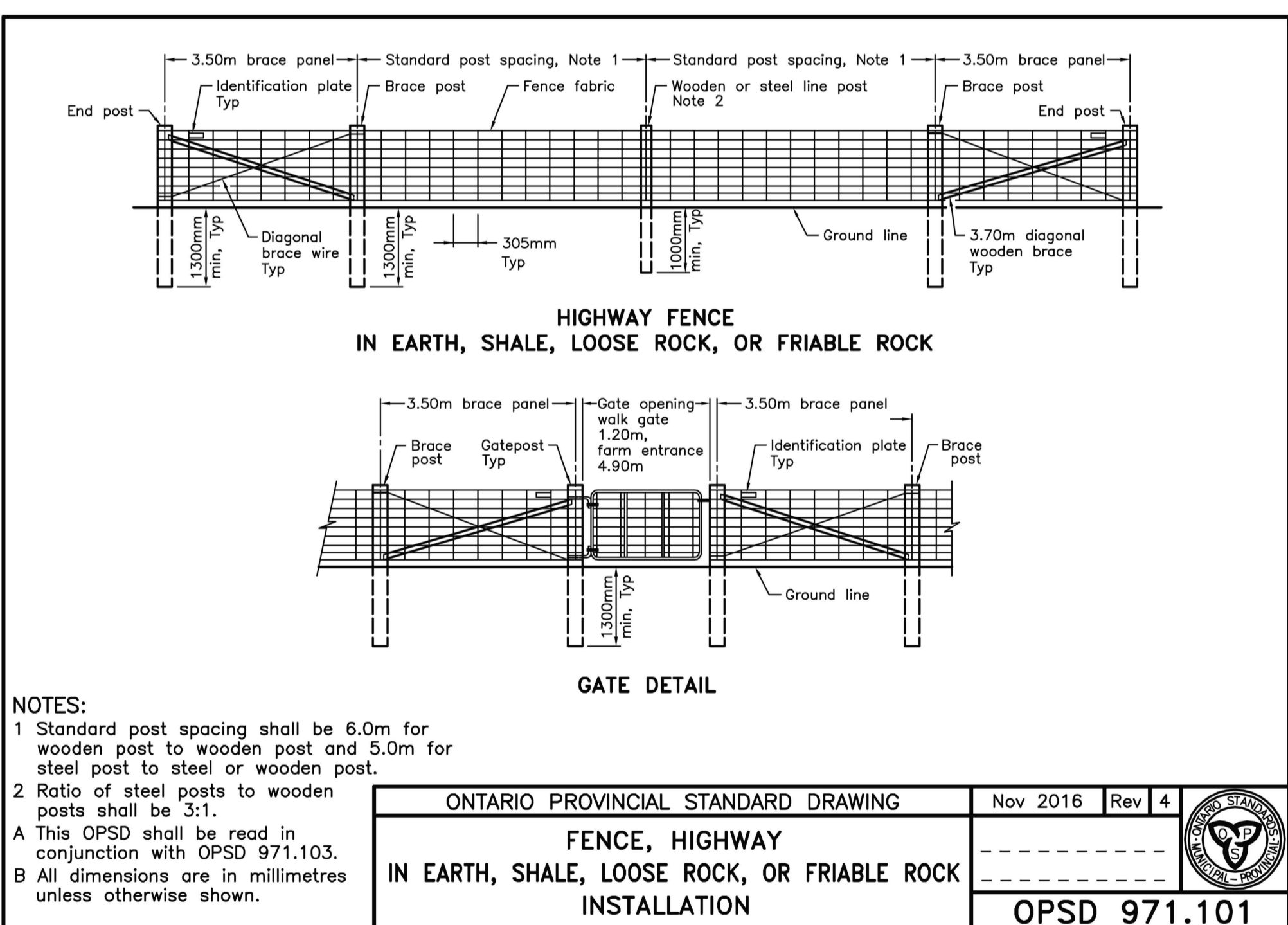
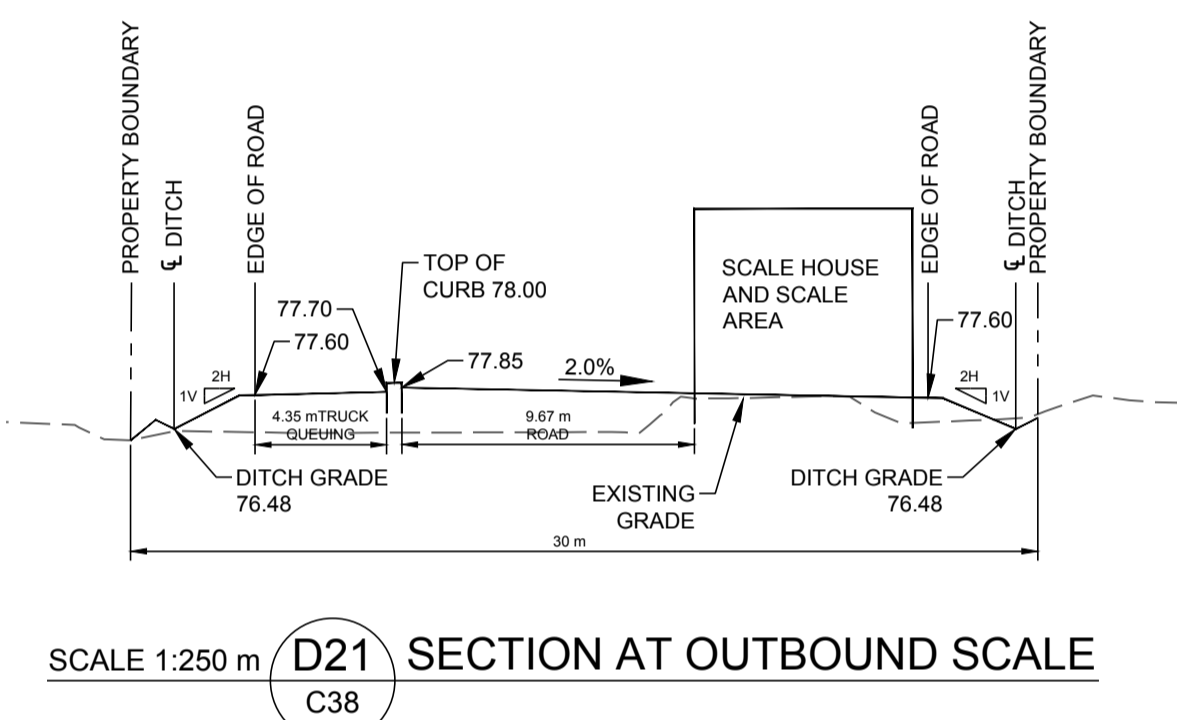
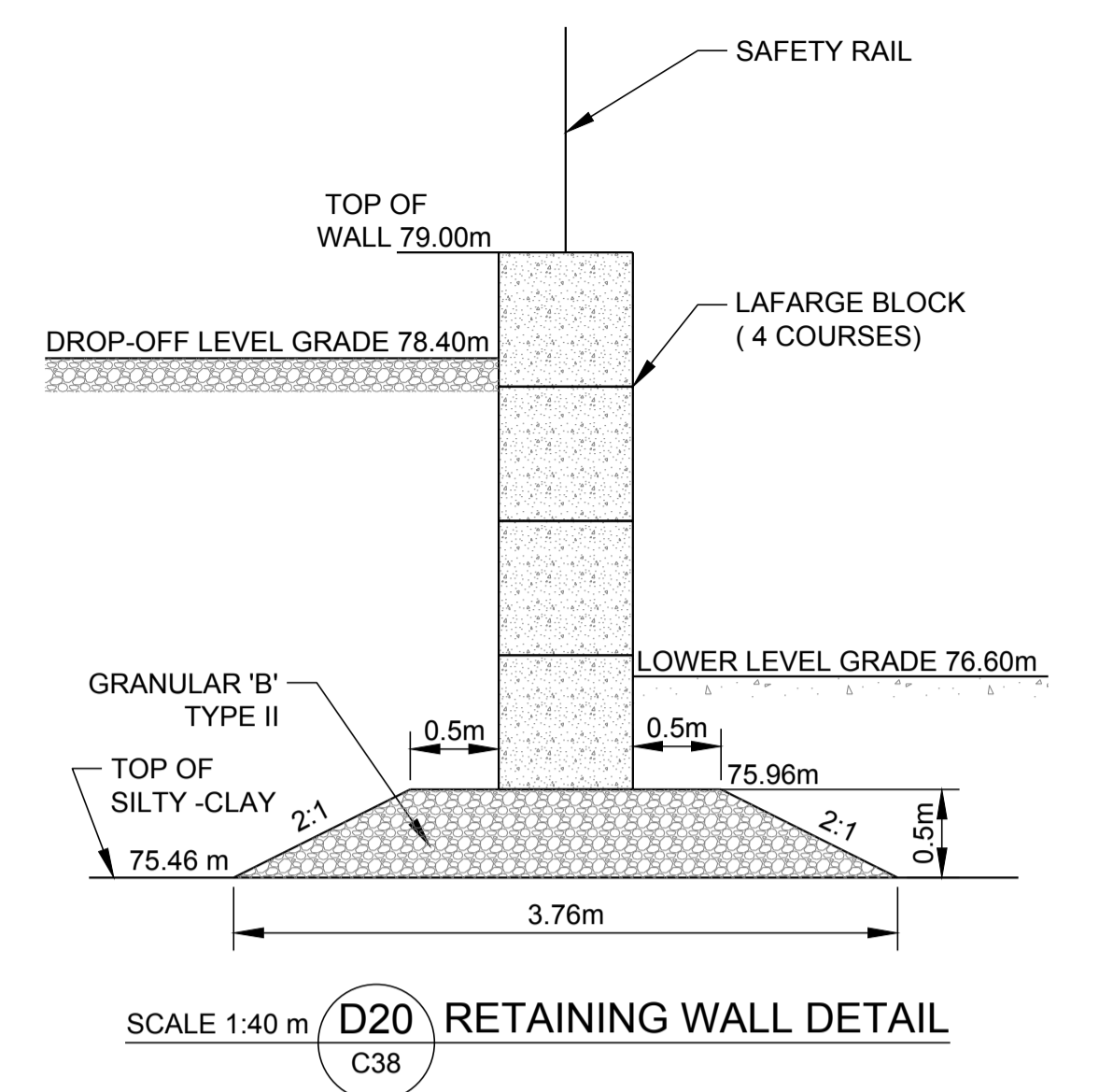
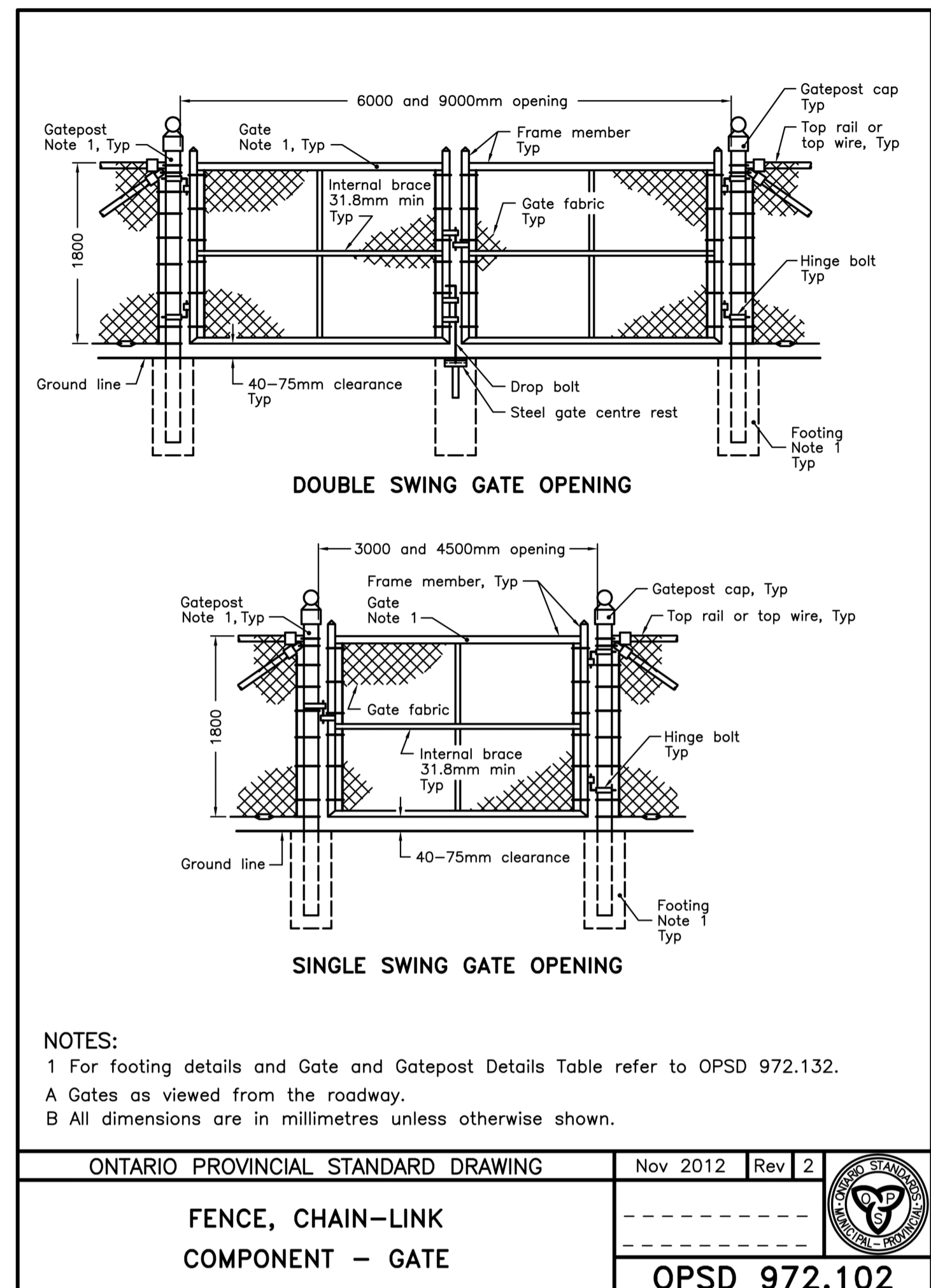
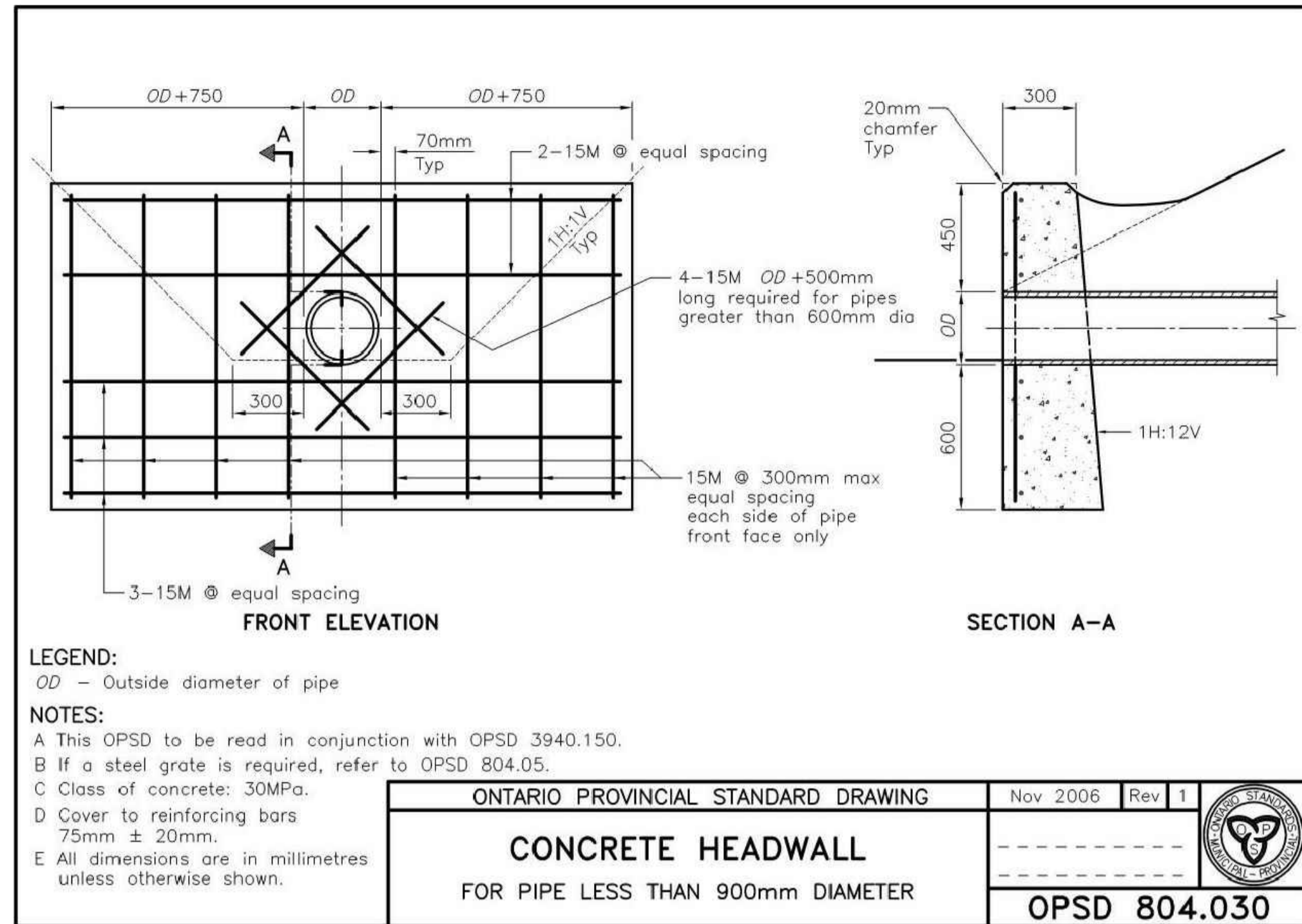


Path: \\golder\gpc\calhawa\active\spatial\_mmmiles\_paving\_ldc\crrrc\cadd\1787048\0005\shorn\_cading\_plan | File Name: 1787048-0005-CV-0005.dwg | Last Edited By: mfcgtag | Date: 2018-12-17 Time: 11:42:35 AM  
 Path: \\golder\gpc\calhawa\active\spatial\_mmmiles\_paving\_ldc\crrrc\cadd\1787048\0005\shorn\_cading\_plan | File Name: 1787048-0005-CV-0005.dwg | Last Edited By: mfcgtag | Date: 2018-12-17 Time: 11:42:35 AM



2	2018-12-14	REVISED FOR SITE PLAN APPROVAL	MHK	MLF	DVK	DVK
1	2018-06-15	ISSUED FOR SITE PLAN APPROVAL	MHK	MLF	DVK	DVK
REV.	YYYY-MM-DD	DESCRIPTION	DESIGNED	PREPARED	REVIEWED	APPROVED

SEAL	CLIENT TAGGART MILLER ENVIRONMENTAL SERVICES	PROJECT CAPITAL REGION RESOURCE RECOVERY CENTRE	
	CONSULTANT	TITLE <b>DETAIL SHEET</b>	
		GOLDER ASSOCIATES LTD. 1931 ROBERSON ROAD OTTAWA, ONTARIO CANADA [+1] (613) 592 9600 www.golder.com	
	PROJECT NO. 1787048	CONTROL 0006	REV. of DRAWING 2 of <b>C38</b>