

<b>40 YEAR CANOPY CALCULATION:</b>
- 398,900 m2 site area
- 19 Large deciduous trees proposed (154m2 ea.)
- 8 coniferous trees proposed (79m2 ea.)
- 34 small deciduous trees proposed (7m2 ea.)
- Existing Tree Canopy (375,160m2)
- 378,956m2 canopy cover = 95% canopy cover
*Large deciduous tree calculated at 14m spread, large coniferous trees at 10m spread, small deciduous tree at 3m spread.

- GENERAL NOTES:**
- IT IS THE RESPONSIBILITY OF THE APPROPRIATE CONTRACTOR OR OFFICIAL TO REPORT ANY ERRORS, OMISSIONS OR DISCREPANCIES ON THIS PLAN WITH ACTUAL SITE CONDITIONS TO THE LANDSCAPE ARCHITECT BEFORE PROCEEDING WITH CONSTRUCTION.
  - THE CONTRACTOR IS TO NOTIFY ALL UTILITY COMPANIES AND AUTHORITIES PRIOR TO ANY EXCAVATION AND ASCERTAIN LOCATIONS OF UNDERGROUND SERVICES.
  - THE CONTRACTOR IS TO REINSTATE ALL AREAS AND ITEMS DAMAGED AS A RESULT OF CONSTRUCTION ACTIVITY.
  - THE CONTRACTOR IS TO COMPLY WITH ALL PERTINENT CODES AND BY-LAWS.
  - THE CONTRACTOR IS TO MAINTAIN A POSITIVE SURFACE RUN-OFF THROUGHOUT THE ENTIRE CONSTRUCTION PERIOD. THE LANDSCAPE ARCHITECT IS NOT RESPONSIBLE FOR SUBSURFACE CONDITIONS.
  - THE CONTRACTOR IS TO IDENTIFY ALL EXISTING TREES TO REMAIN ON SITE WITH THE LANDSCAPE ARCHITECT PRIOR TO CONSTRUCTION.
  - THE CONTRACTOR IS TO STAKE THE PROPOSED LOCATION OF ALL PLANT MATERIAL IN CONJUNCTION WITH THE LANDSCAPE ARCHITECT PRIOR TO EXCAVATION.
  - MINIMUM DISTANCES FOR SELECTED DECIDUOUS TREES ARE AS FOLLOWS:
    1. BUILDING FOUNDATIONS - 7.5M
    2. SIDEWALKS - 1.5M
    3. PUBLIC STREETS - 2.5M
    4. UNDERGROUND INFRASTRUCTURE - 2.0M
  - ALL TREES WITHIN 1M OF UNDERGROUND UTILITY TRENCHES ARE TO BE EXCAVATED BY HAND.
  - REMOVE ALL PROTECTIVE WRAPPING FROM TREE TRUNKS AFTER INSTALLATION.
  - STAKING OF TREES SHALL ONLY BE PERFORMED IF NECESSARY.
  - ENSURE THAT MULCH IS PULLED BACK A MINIMUM DISTANCE OF 75MM FROM BASE OF TREE TRUNK.

- LEGEND**
- PROPOSED DECIDUOUS SHADE TREES (LARGE) - 30m3 SOIL VOLUME AT A 1.5m DEPTH
  - PROPOSED DECIDUOUS FLOWERING TREES (SMALL) - 25m3 SOIL VOLUME AT A 1.5m DEPTH
  - PROPOSED DECIDUOUS FLOWERING TREES (SMALL) - 25m3 SOIL VOLUME AT A 1.5m DEPTH
  - PROPOSED SHRUBS
  - PROPOSED SOD
  - PROPOSED SEED
  - PROPOSED INTERLOCK PAVING
  - PROPOSED RIVERSTONE
  - PROPOSED COMPACTED GRAVEL
  - PROPOSED WETLAND SEED MIXTURE
  - EXISTING VEGETATION TO REMAIN

CLIENT

IBPS TEMPLE

CONSULTANTS

ARCHITECTS: GRC ARCHITECTS

47 RUE CLARENCE, SUITE 401  
OTTAWA, ON. K1N 9K1  
613-241-8203

CIVIL ENGINEERS:

exp Services Inc.

T: +1.613.688.1999 | F: +1.613.225.7330  
2650 Queensview Drive, Unit 100  
Ottawa, ON K2B 8H6

SURVEYORS:

EGIS

215 MENTEN PLACE, SUITE 104  
OTTAWA, ON. K2H 5C1  
613-836-2184

RU[644] RURAL COUNTRYSIDE ZONE (SITE SPECIFIC) 17.85 ha

RU[643] RURAL INSTITUTIONAL ZONE (SITE SPECIFIC) 22.29 ha

AREA OF PROPOSED DEVELOPMENT

PLAN ZONE A

PLAN ZONE B

FRANKTOWN ROAD

PART LOT 19 CONCESSION 3 GOULBOURN PART 1 4R7040, EXCEPT PART 1 4R32299 CITY OF OTTAWA

2	ISSUED FOR SITE PLAN CONTROL	06/12/2025	LC	JL
1	ISSUED FOR SITE PLAN CONTROL	12/18/2024	LC	JL

No.	Issue	Date	DR	CK

JAMES B. LENNOX & ASSOCIATES INC. LANDSCAPE ARCHITECTS

3332 CARLING AVE. OTTAWA, ONTARIO K2H 5A8  
Tel. (613) 722-5168 Fax. (866) 343-3942

PROJECT

IBPS FO GUANG SHAN TEMPLE

6688 FRANKTOWN ROAD, RICHMOND, ON

DRAWING

LANDSCAPE PLAN

STAMP

ASSOCIATION OF LANDSCAPE ARCHITECTS OF ONTARIO

SCALE

AS SHOWN

START DATE

MARCH, 2024

PROJECT NO.

24-GRC-2378

PROJECT NORTH

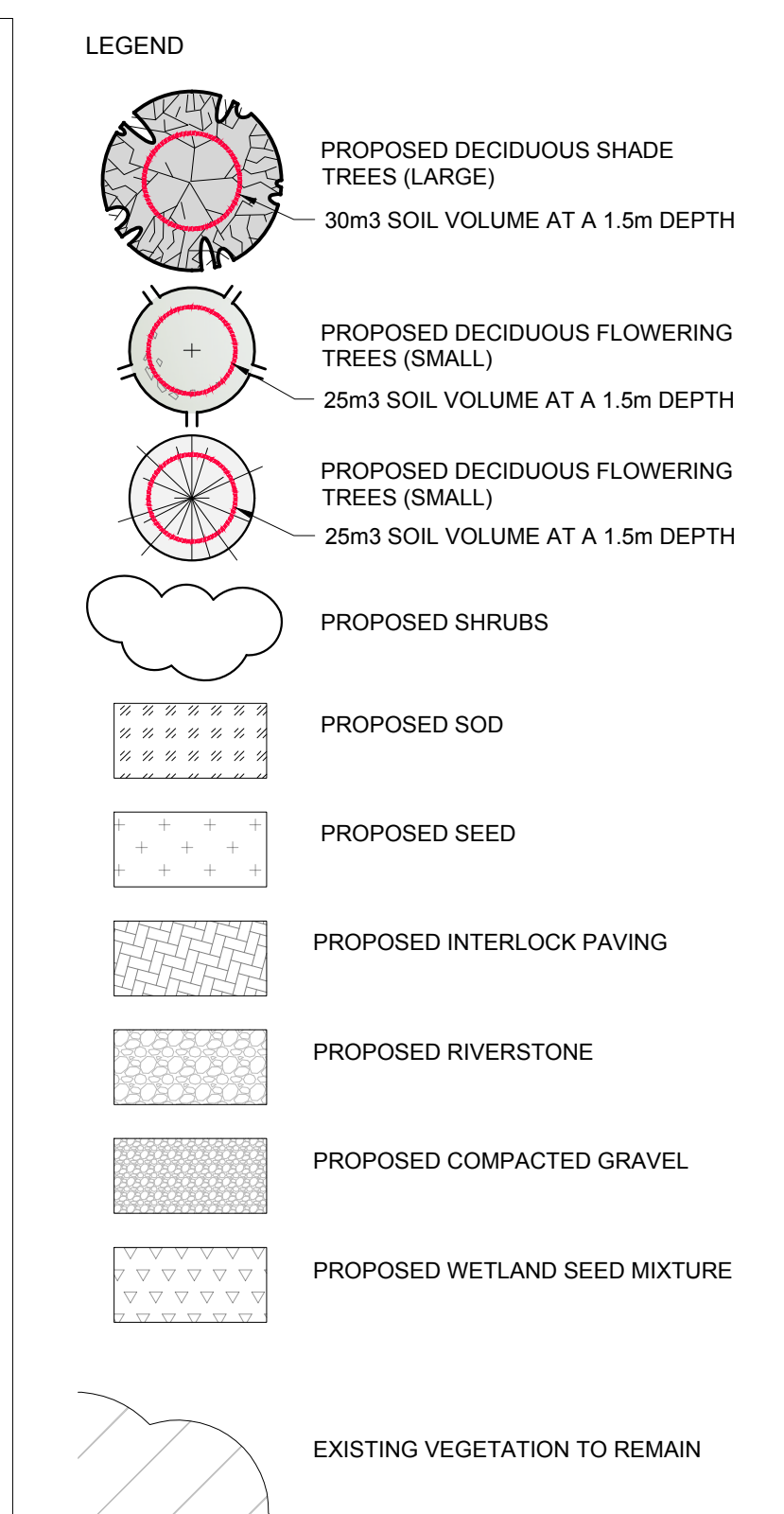
DRAWING NO.

L-100

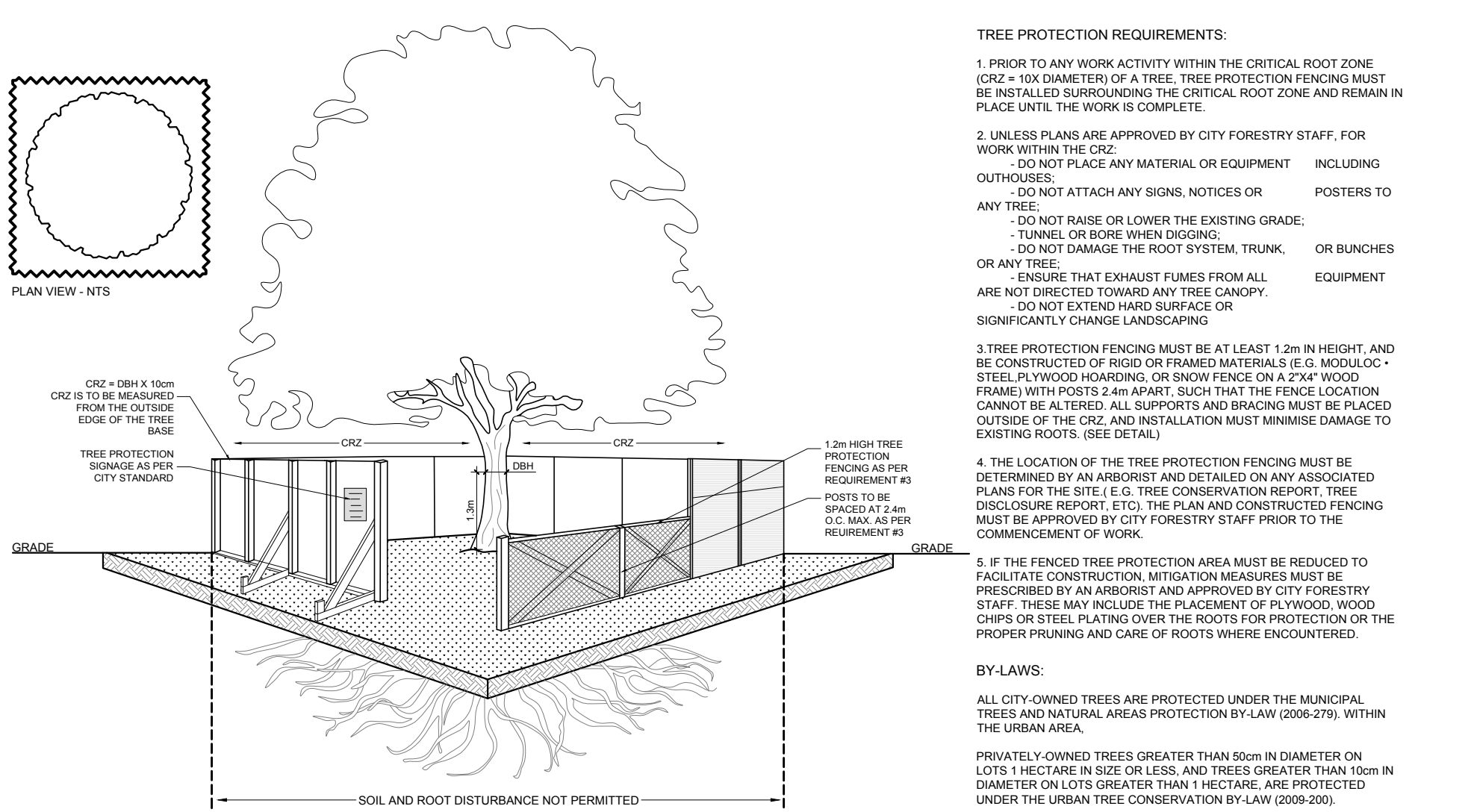
PLOT SIZE ARCH-D

1 LANDSCAPE PLAN AREA OF DEVELOPMENT - PLAN AREA A  
L-100 SCALE 1:400

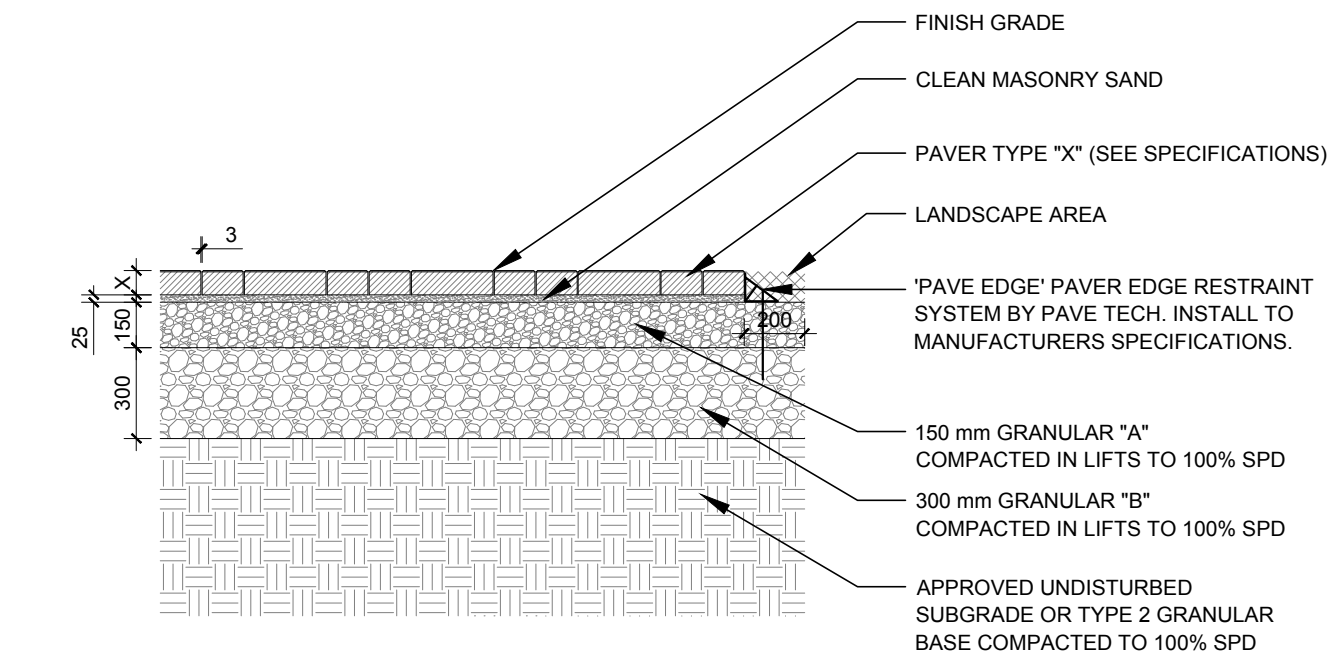
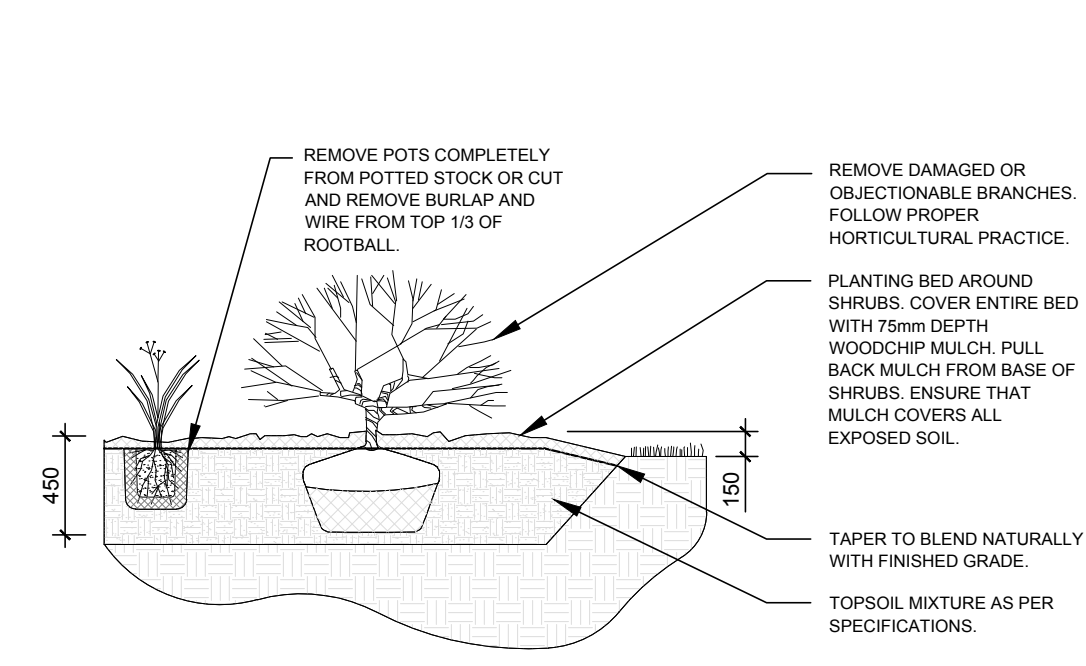
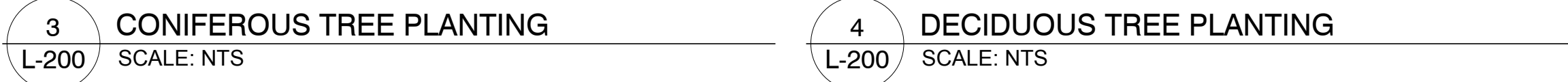
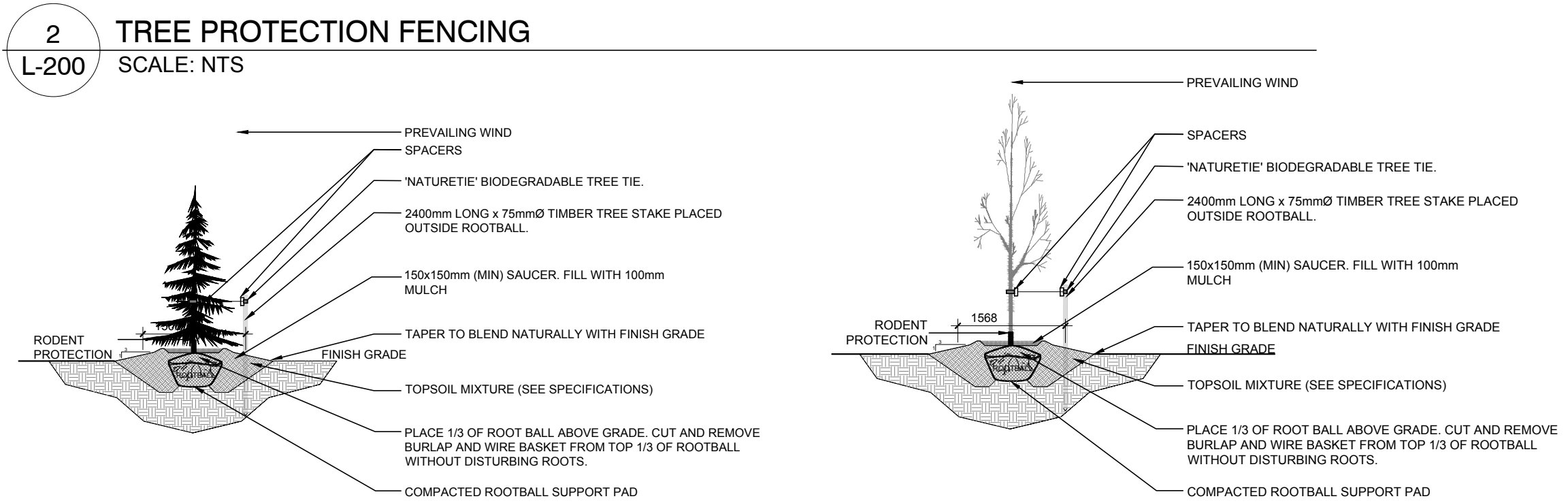




CLIENT	
<b>IBPS TEMPLE</b>	
CONSULTANTS	
ARCHITECTS:	<b>GRC ARCHITECTS</b>
	47 RUE CLARENCE, SUITE 401 OTTAWA, ON. K1N 9K1 613-241-8203
CIVIL ENGINEERS:	
	<b>exp Services Inc.</b>
	T +1 613 688 1899   F +1 613 225 7330 2650 Queensview Drive, Unit 100 Ottawa, ON K2B 8H6
SURVEYORS:	
	<b>EGIS</b>
	215 MENTEN PLACE, SUITE 104 OTTAWA, ON. K2H 5C1 613-836-2184



PROPOSED PLANT LIST						
<div>QTY</div>						
KEY	QTY	BOTANICAL NAME	COMMON NAME	SIZE	CONDITION	REMARKS
<b>TREES</b>						
BO	2	Quercus macrocarpa	Bur Oak	50mm cal.	B&B	Deciduous
CA	2	Catalpa speciosa	Northern Catalpa	50mm cal.	B&B	Deciduous
CE	3	Thuja occidentalis	Eastern White Cedar	2000 mm ht.	B&B	Coniferous
CR1	11	Malus 'Makami'	Makami Crabapple	50mm cal.	B&B	Deciduous
CR2	2	Malus 'Royalty'	Royalty Crabapple	50mm cal.	B&B	Deciduous
CR	4	Cercis canadensis	Eastern Redbud	50mm cal.	B&B	Deciduous
FM	3	Acer x freemanii	Freemans Maple	50mm cal.	B&B	Deciduous
HA	2	Crataegus crus-galli var. inermis	Thornless Cockspur Hawthorn	50mm cal.	B&B	Deciduous
HL	5	Gleditsia triacanthos	Honey Locust	50mm cal.	B&B	Deciduous
JTL	5	Syringa reticulata	Japanese Tree Lilac	50mm cal.	B&B	Deciduous
RM	1	Acer rubrum	Red Maple	50mm cal.	B&B	Deciduous
RO	5	Quercus rubra	Red Oak	50mm cal.	B&B	Deciduous
SB	2	Amelanchier canadensis	Serviceberry	50mm cal.	B&B	Deciduous
SM	2	Acer saccharum	Sugar Maple	50mm cal.	B&B	Deciduous
WS	7	Picea glauca	White Spruce	1800 mm ht.	B&B	Coniferous
<b>SHRUBS</b>						
CL	110	Syringa vulgaris	Common Purple Lilac	1200mm ht.	Potted	1500 mm o.c.
DW	460	Cornus sericea	Red Osier Dogwood	800mm ht.	Potted	800 mm o.c.
DR	300	Rosa rugosa	Rugosa Rose	800mm ht.	Potted	800 mm o.c.



2	ISSUED FOR SITE PLAN CONTROL	06/12/2025	JL	LC	JL
1	ISSUED FOR SITE PLAN CONTROL	12/18/2024	LC	JL	JL
No.	Issue	Date MM/DD/YY			DR CK

**JAMES B. LENNOX & ASSOCIATES INC.**  
**LANDSCAPE ARCHITECTS**  
 3332 CARLING AVE. OTTAWA, ONTARIO K2H 5A8  
 Tel. (613) 722-5168 Fax. 1(866) 343-3942


PROJECT



IBPS FO GUANG SHAN TEMPLE

6688 FRANKTOWN ROAD, RICHMON, ON

DRAWING

LANDSCAPE PLAN

	SCALE
	AS SHOWN
	START DATE
	MARCH, 2024
	PROJECT NO.
	24-GR-2378

<p>PROJECT NORTH</p> 	<p>DRAWING NO.</p> <p><b>L-200</b></p>
	<p>PLOT SIZE ARCH-D</p>