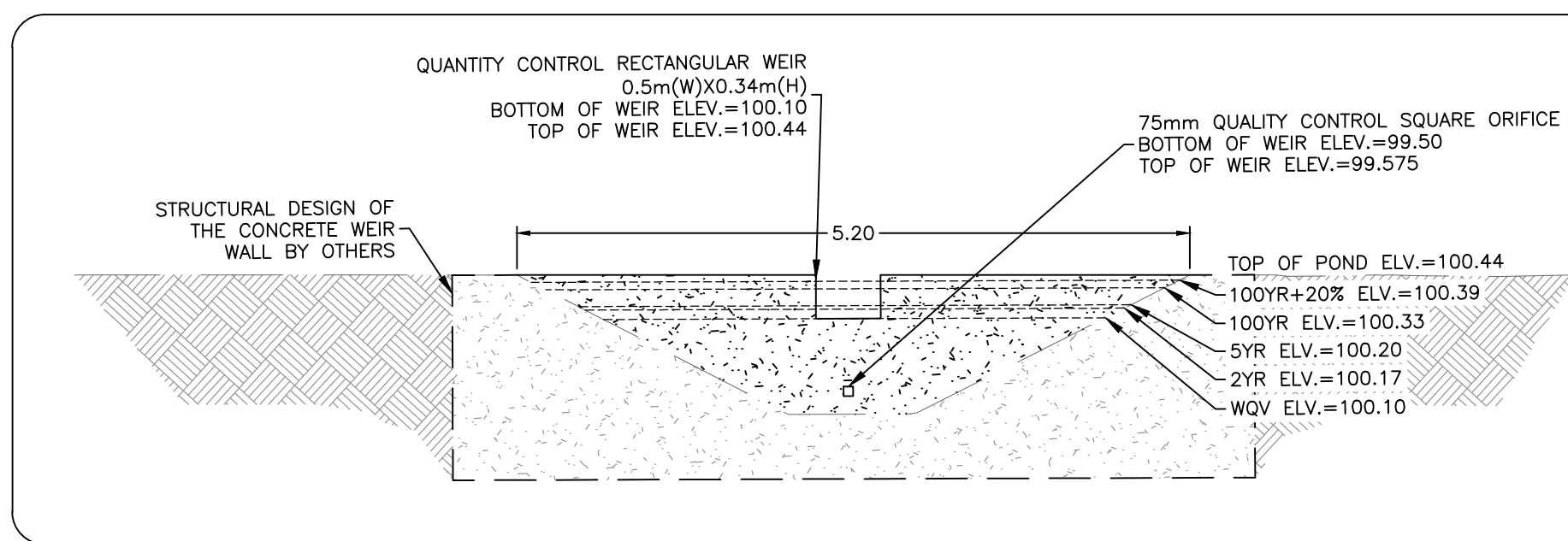


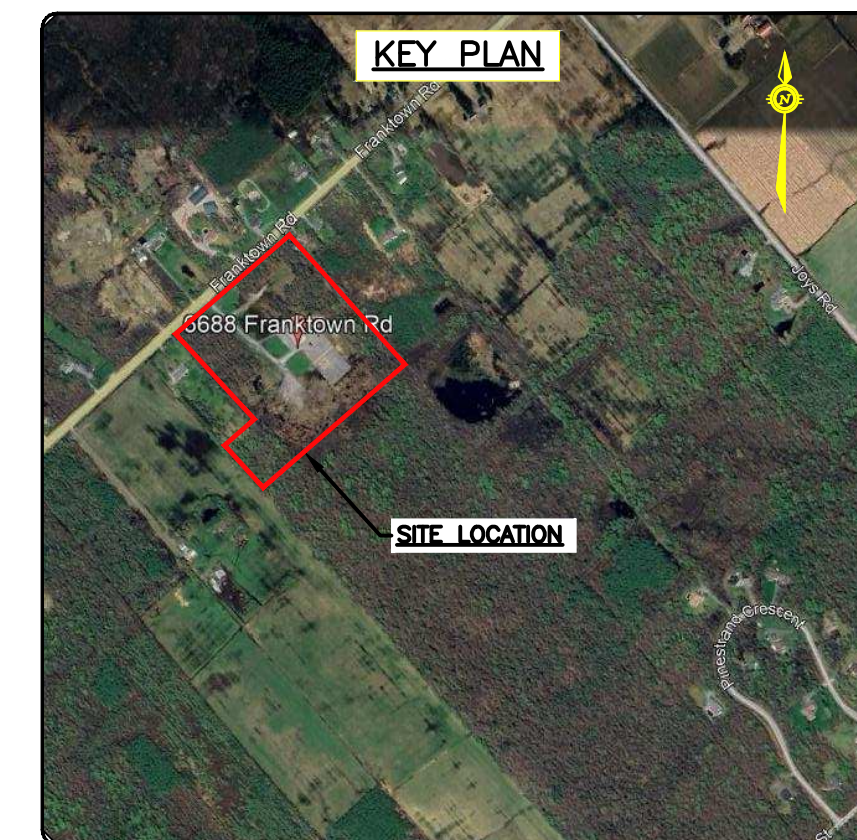
GENERAL NOTES:

- 1. ALL WORKS AND MATERIALS SHALL CONFORM TO THE LATEST REVISIONS OF THE STANDARDS AND SPECIFICATIONS OF THE CITY OF OTTAWA, ONTARIO PROVINCIAL STANDARD DRAWINGS (OPSD) AND SPECIFICATIONS (OPSS), WHERE APPLICABLE.
2. THE LOCATION OF UTILITIES IS APPROXIMATE ONLY, AND THE EXACT LOCATION SHOULD BE DETERMINED BY CONSULTING THE MUNICIPAL AUTHORITIES AND UTILITY COMPANIES CONCERNED.
3. THE CONTRACTOR SHALL VERIFY THE LOCATION AND ELEVATION OF EXISTING SERVICES PRIOR TO ANY CONSTRUCTION...

- 4. WATERMANS TRENCH AND BEDDING SHALL BE IN ACCORDANCE WITH CITY OF OTTAWA STANDARD W17, UNLESS OTHERWISE SPECIFIED.
5. ALL PVC WATERMANS SHALL BE INSTALLED WITH A 10 GAUGE STRANDED COPPER TWU OR RWU TRACER WIRE IN ACCORDANCE WITH CITY OF OTTAWA STD. W35.
6. WATER SERVICE TO BE PVC DR18 OR APPROVED EQUIVALENT.
7. CATHODIC PROTECTION IS REQUIRED ON ALL METALLIC FITTINGS AS PER CITY OF OTTAWA STD. W40 AND W42.



DETAIL A: PROPOSED POND OUTLET STRUCTURE



ROADWAY SPECIFICATIONS

- 1. ALL TOPSOIL AND ORGANIC MATERIAL SHALL BE STRIPPED WITHIN THE ROAD ALLOWANCE PRIOR TO THE COMMENCEMENT OF CONSTRUCTION.
2. CONCRETE CURB SHALL BE IN ACCORDANCE WITH CITY OF OTTAWA STD. SCI.1.1 (BARRIER CURB) AND SCI.3 (MOUNTABLE CURB), AS NOTED.
3. PAVEMENT REINSTATEMENT FOR SERVICE AND UTILITY CUTS SHALL BE IN ACCORDANCE WITH CITY OF OTTAWA STD. R10 AND OPSD 509.010, OPSS 310.
4. GRANULAR 'A' SHALL BE PLACED TO A MINIMUM THICKNESS OF 300mm AROUND ALL STRUCTURES WITHIN PAVEMENT AREA.

GENERAL NOTES FOR GRADING

- 1. IT SHALL BE THE BUILDER'S RESPONSIBILITY TO ENSURE THAT GRADING AROUND HYDRANTS, TRANSFORMERS, AND UTILITY PEDESTALS, ETC., MEET CURRENT CITY OF OTTAWA, HYDRO AND UTILITY COMPANY REQUIREMENTS.
2. ALL GROUND SURFACES SHALL BE EVENLY GRADED WITHOUT PONDING AREAS AND WITHOUT LOW POINTS EXCEPT WHERE APPROVED SWALE OR CATCH BASIN OUTLETS ARE PROVIDED.
3. CONTRACTOR TO ADJUST EXISTING UNDERGROUND STRUCTURES AND GRATES, FIRE HYDRANTS, VALVE CHAMBERS AND VALVE BOXES TO FINAL GRADE AS REQUIRED.

SANITARY SEWER NOTES

- 1. ALL SANITARY SEWER MATERIALS AND INSTALLATION SHALL CONFORM TO THE LATEST REVISIONS OF THE STANDARDS AND SPECIFICATIONS OF THE CITY OF OTTAWA, ONTARIO PROVINCIAL STANDARD DRAWINGS (OPSD) AND SPECIFICATIONS (OPSS).
2. ALL SANITARY SEWERS SHALL BE PVC SDR 35, IPEX 'RING-TITE' (OR EQUIVALENT), AS PER CSA STANDARD 8162.2 OR LATEST AMENDMENT, UNLESS OTHERWISE NOTED.
3. SANITARY SEWER TRENCH AND BEDDING SHALL BE AS PER CITY OF OTTAWA STD. S6 AND S7, CLASS 'B' BEDDING UNLESS OTHERWISE NOTED.
4. ALL SANITARY LATERALS ARE TO BE PVC SDR 26, IPEX 'RING-TITE' (OR EQUIVALENT), ANY COLOR EXCEPT WHITE AND MARKED WITH A 50MM X 100MM WOODEN MARKER, EXTENDING FROM THE INVERT TO 1.0 M ABOVE GRADE PAINTED RED.

STORM SEWER NOTES

- 1. ALL STORM SEWER MATERIALS AND INSTALLATION SHALL CONFORM TO THE LATEST REVISIONS OF THE STANDARDS AND SPECIFICATIONS OF THE CITY OF OTTAWA, ONTARIO PROVINCIAL STANDARD DRAWINGS (OPSD) AND SPECIFICATIONS (OPSS).
2. ALL STORM CULVERTS SHALL BE HDPE BOSS 2000 OR APPROVED EQUIVALENT.
3. RIP-RAP AT STORM CULVERTS INLET AND OUTLET SHALL BE AS PER OPSD 810.010.
4. MINIMUM COVER OVER STORM CULVERT SHALL BE MAINTAINED AS PER MANUFACTURER'S INSTRUCTIONS.

WATERMAIN NOTES

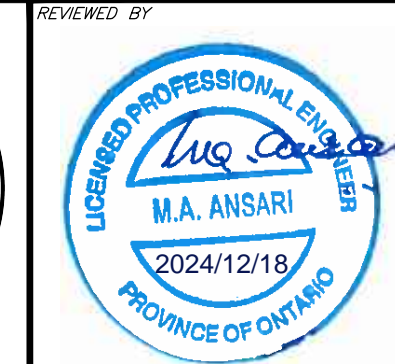
- 1. ALL WATERMAIN MATERIALS AND INSTALLATION SHALL CONFORM TO THE LATEST REVISIONS OF THE STANDARDS AND SPECIFICATIONS OF THE CITY OF OTTAWA, ONTARIO PROVINCIAL STANDARD DRAWINGS (OPSD) AND SPECIFICATIONS (OPSS).
2. NO WORK SHALL COMMENCE UNLESS A CITY WATER WORKS INSPECTOR IS ON SITE. WATER WELL DRILLING SHALL ONLY BE PERFORMED BY A CERTIFIED WELL DRILLER IN THE PROVINCE OF ONTARIO.
3. ALL PVC WATERMANS SHALL BE EQUAL TO AWWA C-900 CLASS 150, SDR 18, OR APPROVED EQUAL.

CAUTION THE POSITION OF ALL POLE LINES, CONDUITS, WATERMANS, SEWERS AND OTHER UNDERGROUND AND OVERGROUND UTILITIES AND STRUCTURES IS NOT NECESSARILY SHOWN ON THE CONTRACT DRAWINGS, AND WHERE SHOWN, THE ACCURACY OF THE POSITION OF SUCH UTILITIES AND STRUCTURES IS NOT GUARANTEED. BEFORE STARTING WORK, DETERMINE THE EXACT LOCATION OF ALL SUCH UTILITIES AND STRUCTURES AND ASSUME ALL LIABILITIES FOR DAMAGE TO THEM.

JOB BENCH MARK JBM TOP OF SOUTH BOLT ON LIGHT STANDARD ELEVATION=101.36

Table with columns: REV, REVISION DESCRIPTION, DATE, BY, APPD. Row 1: 1, ISSUED FOR SPA, 18/12/24, AGJ, AKJ.

SCALE NORTH



GRC ARCHITECTS 47 CLARENCE STREET, SUITE 401 OTTAWA, ON. K1N 9K1 613.241.8203 exp Services Inc. 1-813-668-1800

BASEPLAN AGJ DESIGN AKJ CHECKED AA CAD AGJ PROJECT MANAGER AJ APPROVED AA

PROJECT No. 22027645-AG SURVEY MCINTOSH PERRY DATE 25/08/23 DRAWING No. C001 PROJECT: IBPS FO GUAN SHAN TEMPLE 6888 FRANKTOWN ROAD OTTAWA, ONTARIO. NOTES & DETAILS

CLIENT